



DIAMOND TESTING
P.O. Box 157
HOISINGTON, KANSAS 67544
(800) 542-7313
DRILL-STEM TEST TICKET
FILE: Brya2dst2

TIME ON: 10:35
TIME OFF: 19:13

Company L.D. Drilling Inc. Lease & Well No. Bryant "A" #2
Contractor Petromark Rig #2 Charge to L.D. Drilling Inc.
Elevation 1748 KB Formation Arbuckle Effective Pay _____ Ft. Ticket No. S0460
Date 06-19-14 Sec. 25 Twp. 20 S Range 11 W County Barton State KANSAS
Test Approved By Kim Shoemaker Diamond Representative Jacob McCallie

Formation Test No. 2 Interval Tested from 3230 ft. to 3254 ft. Total Depth 3254 ft.
Packer Depth 3225 ft. Size 6 3/4 in. Packer depth -- ft. Size 6 3/4 in.
Packer Depth 3230 ft. Size 6 3/4 in. Packer depth -- ft. Size 6 3/4 in.

Depth of Selective Zone Set _____

Top Recorder Depth (Inside) 3215 ft. Recorder Number 5515 Cap. 5,000 P.S.I.
Bottom Recorder Depth (Outside) 3234 ft. Recorder Number 5586 Cap. 5,000 P.S.I.
Below Straddle Recorder Depth _____ ft. Recorder Number _____ Cap. _____ P.S.I.

Mud Type Chem Viscosity 54 Drill Collar Length 122 ft. I.D. 2 1/4 in.
Weight 9.45 Water Loss 10 cc. Weight Pipe Length -- ft. I.D. 2 7/8 in.
Chlorides 5,500 P.P.M. Drill Pipe Length 3079 ft. I.D. 3 1/2 in.
Jars: Make STERLING Serial Number Safe Jt. Test Tool Length 29 ft. Tool Size 3 1/2-IF in.
Did Well Flow? No Reversed Out No Anchor Length 24 ft. Size 4 1/2-FH in.
Main Hole Size 7 7/8 Tool Joint Size 4 1/2 XH in. Surface Choke Size 1 in. Bottom Choke Size 5/8 in.

Blow: 1st Open: BB in 45 sec 6 1/2" BB
2nd Open: 3" Blow- Built to BB in 1 3/4 min BBBB

Recovered <u>567</u> ft. of <u>GIP</u>	
Recovered <u>34</u> ft. of <u>CO</u> 100% O GRAVITY: 42 @ 60 degrees F	
Recovered <u>284</u> ft. of <u>SLG&OCHMCW</u> 3% G 10% O 47% W 40% M	
Recovered <u>756</u> ft. of <u>SLM&OCW</u> 10% O 98% W 1% M	
Recovered <u>1256</u> ft. of <u>SLMCW</u> 98% W 2% M	Price Job
Recovered <u>2330</u> ft. of <u>TOTAL FLUID</u>	Other Charges
Remarks: <u>PH: 7</u> <u>RW: .3 @ 90 degrees F</u>	Insurance
<u>CHLORIDES: 15,000 ppm</u>	
<u>TOOL SAMPLE: 20% O 75% W 5% M</u>	Total

Time Set Packer(s) 12:20 PM A.M. P.M. Time Started Off Bottom 3:20 PM A.M. P.M. Maximum Temperature 110

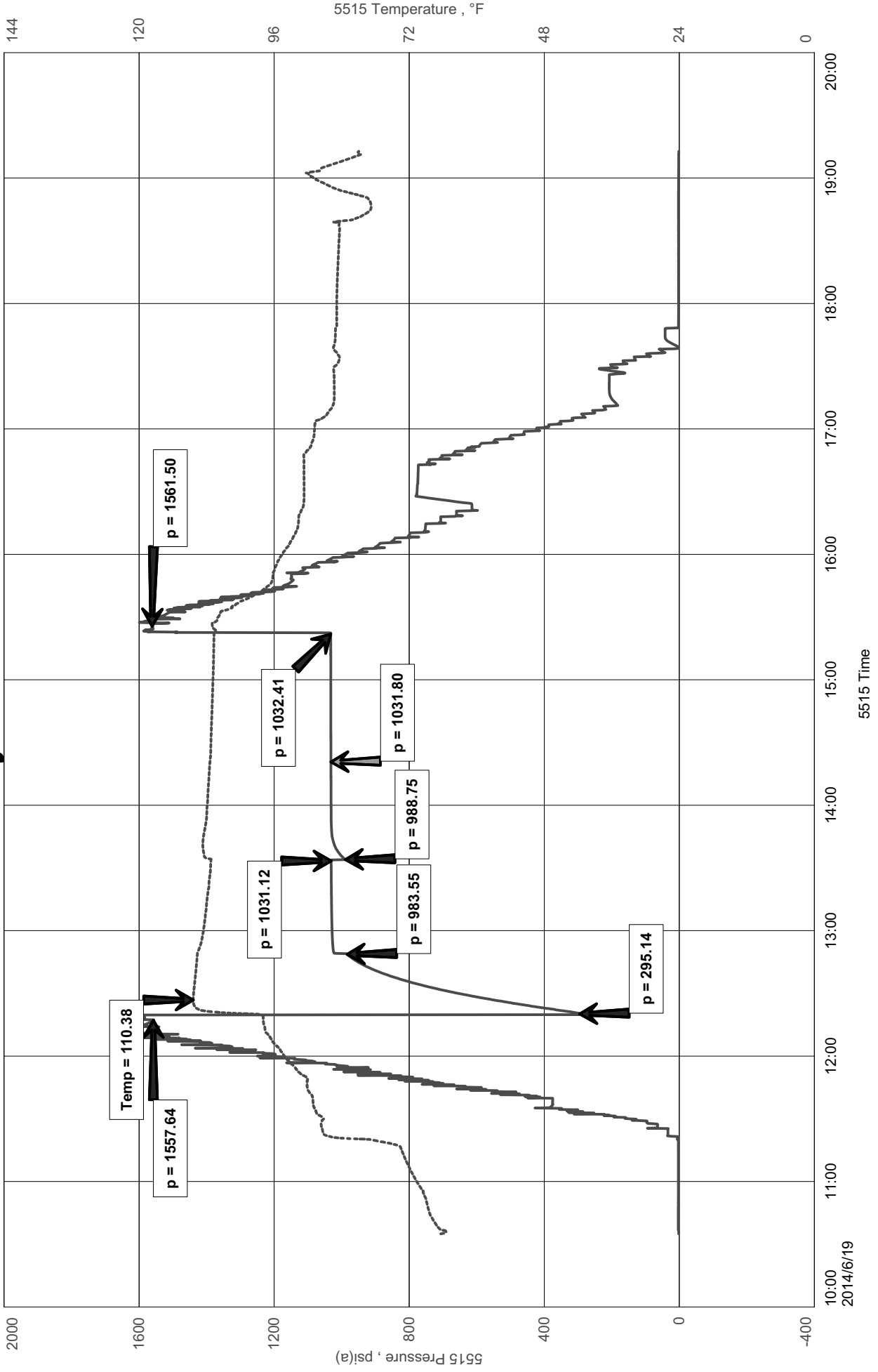
Initial Hydrostatic Pressure..... (A) 1558 P.S.I.
Initial Flow Period..... Minutes 30 (B) 295 P.S.I. to (C) 984 P.S.I.
Initial Closed In Period..... Minutes 45 (D) 1031 P.S.I.
Final Flow Period..... Minutes 45 (E) 989 P.S.I. to (F) 1032 P.S.I.
Final Closed In Period..... Minutes 60 (G) 1032 P.S.I.
Final Hydrostatic Pressure..... (H) 1562 P.S.I.

Diamond Testing shall not be liable for damages of any kind to the property or personnel of the one for whom a test is made or for any loss suffered or sustained, directly or indirectly, through the use of its equipment, or its statement or opinion concerning the result of any test. Tools lost or damaged in the hole shall be paid for at cost by the party for whom the test is made.

LD Drilling Inc.
DST #2 Arbuckle 3230-3254'
Start Test Date: 2014/06/19
Final Test Date: 2014/06/19

Bryant "A" #2
Formation: DST #2 Arbuckle 3230-3254'
Pool: Infield
Job Number: S0460

Bryant "A" #2



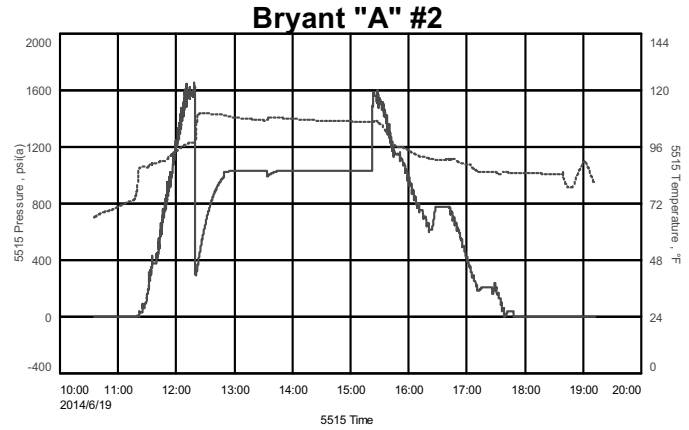
Diamond Testing LLC

General Information Report

Jacob McCallie
620-617-7116
mccallie.dtlc@gmail.com

General Information

Company Name LD Drilling Inc.
Contact LD Davis
Well Name Bryant "A" #2
Unique Well ID DST #2 Arbuckle 3230-3254'
Surface Location SEC 25-20S-11W Barton County
Field Chase-Silica
Well Type Vertical
Test Type Drill Stem Test
Formation DST #2 Arbuckle 3230-3254'
Well Fluid Type 01 Oil
Start Test Date 2014/06/19
Start Test Time 10:35:00
Final Test Date 2014/06/19
Final Test Time 19:13:00
Job Number S0460
Representative Jacob McCallie
Report Date 2014/06/19
Gauge Serial Number



Test Results

RECOVERED:

567'	GIP		
34'	CO	100% O	GRAVITY: 42 @ 60 degrees F
284	SLG&OCHMCW	3% G 10% O 47% W 40% M	
756'	SLM&OCW	10% O 89% W 1% M	
1256'	SLMCW	98% W 2% W	
2330'	TOTAL FLUID		

PH: 7

RW: .3 @ 90 degrees F

Chlorides: 15,000 ppm

TOOL SAMPLE:

20% O 75% W 5% M