



GEOLOGIST'S REPORT

OPERATOR MURFIN DRILLING COMPANY, INC.

LEASE R & J # 1-23

LOCATION 335 FNL & 1650 FEL

SEC. 23 TWP. 16S RGE. 20W

COUNTY RUSH STATE KANSAS

FIELD ROLAND

CONTRACTOR Murfin Drilling Company RIG NO. 16

COMMENCED 2 June 2014 COMPLETED 7 June 2014

MUD DISPLACED 2053 MUD TYPE Chemical

DRILLING TIME KEPT FROM 3070 TO 3940

SAMPLES SAVED FROM 3070 TO 3940

GEOLOGICAL SUPERVISION FROM 2963 TO 3940

GEOLOGIST ON WELL Paul Gunzelman

FORMATION LOG table with columns: NAME, TOP, DATUM, TOP, DATUM, SAMPLE, DATUM

STONE CORRAL, BASE/ANHYDRITE, TOPEKA, HEEBNER SHALE, TORONTO, LANSING, BASE/KANSAS CITY, ARBUCKLE table with columns: NAME, TOP, DATUM, TOP, DATUM, SAMPLE, DATUM

ELEVATIONS KB 2133 Ft.

GL 2128 Ft.

ALL MEASUREMENTS FROM K.B.

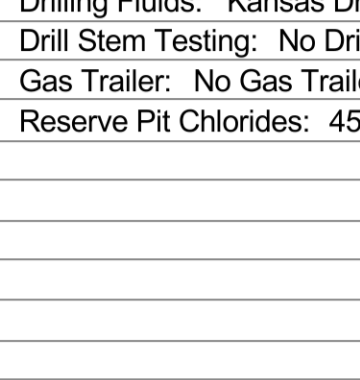
CASING RECORD Conductor None

Surface 8 5/8" @ 217'

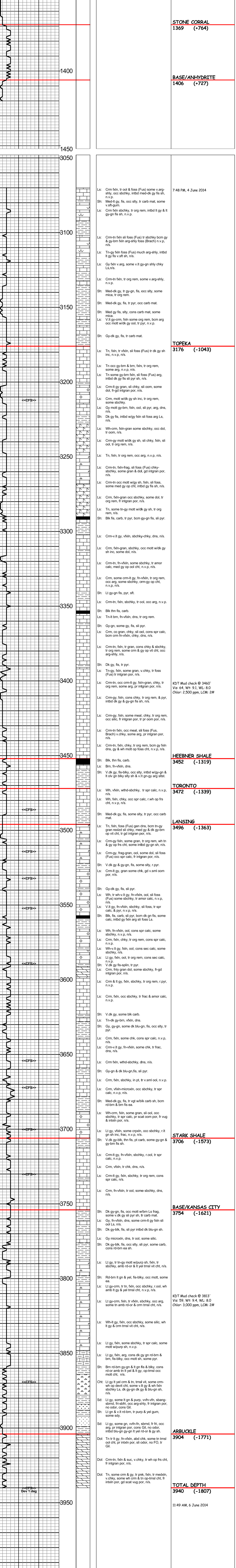
Production None

ELECTRICAL SURVEYS: Pioneer Energy Services

Dual Induction Micro-resistivity Comp. Sonic



REMARKS table with columns: DRILL TIME (MIN/FT), DEPTH, LITHOLOGY, SAMPLE DESCRIPTIONS, REMARKS



Operator: MURFIN DRILLING COMPANY, INC. Lease: R & J # 1-23 Location: 335 FNL & 1650 FEL SEC. 23 TWP. 16S RGE. 20W County: RUSH State: KANSAS