



**TRILOBITE
TESTING, INC**

DRILL STEM TEST REPORT

Russell Oil Inc.
PO Box 8050
Edmond OK 73083
ATTN: Kit Noah

14-15s-14w-Russell Co.
Addington 'A' #3-14
Job Ticket: 58942 **DST#: 4**
Test Start: 2014.06.03 @ 16:05:14

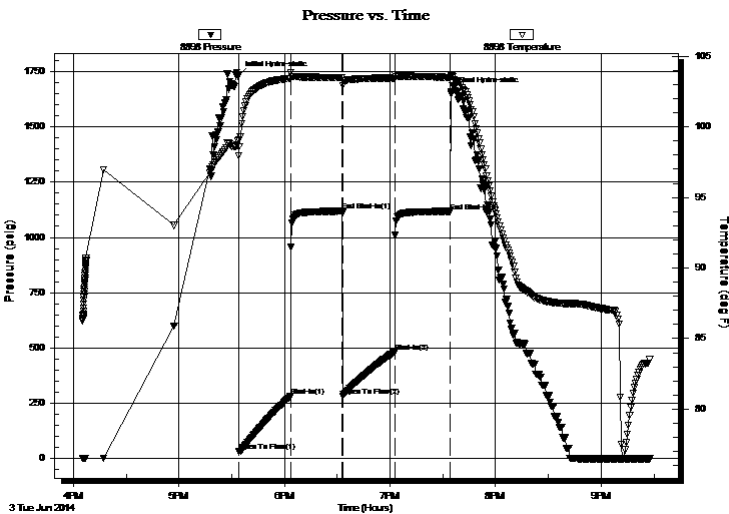
GENERAL INFORMATION:

Formation: **Arbuckle**
Deviated: No Whipstock: ft (KB)
Time Tool Opened: 17:34:04
Time Test Ended: 21:27:44
Interval: **3343.00 ft (KB) To 3348.00 ft (KB) (TVD)**
Total Depth: 3348.00 ft (KB) (TVD)
Hole Diameter: 7.88 inches Hole Condition: Good
Reference Elevations: 1894.00 ft (KB)
1885.00 ft (CF)
KB to GR/CF: 9.00 ft

Serial #: 8898 Outside
Press@RunDepth: 483.33 psig @ 3345.00 ft (KB) Capacity: 8000.00 psig
Start Date: 2014.06.03 End Date: 2014.06.03 Last Calib.: 2014.06.03
Start Time: 16:05:15 End Time: 21:27:44 Time On Btm: 2014.06.03 @ 17:33:54
Time Off Btm: 2014.06.03 @ 19:34:34

TEST COMMENT: B.O.B. in 4 mins
Dead no blow back
B.O.B. in 4 mins
Dead no blow back

PRESSURE SUMMARY



Time (Min.)	Pressure (psig)	Temp (deg F)	Annotation
0	1732.89	99.08	Initial Hydro-static
1	33.71	97.94	Open To Flow (1)
30	281.89	103.41	Shut-In(1)
59	1118.78	103.49	End Shut-In(1)
60	283.72	102.92	Open To Flow (2)
89	483.33	103.44	Shut-In(2)
121	1118.06	103.50	End Shut-In(2)
121	1657.32	103.65	Final Hydro-static

Recovery

Length (ft)	Description	Volume (bbl)
1024.00	100%W	14.36
45.00	VSOCWM 8%O 2%W 90%M	0.63
5.00	100%O	0.07

* Recovery from multiple tests

Gas Rates

Choke (inches)	Pressure (psig)	Gas Rate (Mcf/d)



**TRILOBITE
TESTING, INC**

DRILL STEM TEST REPORT

FLUID SUMMARY

Russell Oil Inc.
PO Box 8050
Edmond OK 73083
ATTN: Kit Noah

14-15s-14w-Russell Co.
Addington 'A' #3-14
Job Ticket: 58942 **DST#: 4**
Test Start: 2014.06.03 @ 16:05:14

Mud and Cushion Information

Mud Type: Gel Chem	Cushion Type:	Oil API:	deg API
Mud Weight: 10.00 lb/gal	Cushion Length: ft	Water Salinity:	28000 ppm
Viscosity: 50.00 sec/qt	Cushion Volume: bbl		
Water Loss: 9.19 in ³	Gas Cushion Type:		
Resistivity: ohm.m	Gas Cushion Pressure: psig		
Salinity: 7300.00 ppm			
Filter Cake: 1.00 inches			

Recovery Information

Recovery Table

Length ft	Description	Volume bbl
1024.00	100%W	14.364
45.00	VSOCWM 8%O 2%W 90%M	0.631
5.00	100%O	0.070

Total Length: 1074.00 ft Total Volume: 15.065 bbl

Num Fluid Samples: 0 Num Gas Bombs: 0 Serial #:

Laboratory Name: Laboratory Location:

Recovery Comments: .233 @ 80 F = 28000

