



Fall & Associates

Stake and Elevation Service

719 W. 5th Street

P.O. Box 404

Concordia, KS. 66901

1-800-536-2821

Date 5-28-14

Invoice Number 0522141

MURFIN DRILLING

1-7

Verna Poore

Operator

Number

Farm Name

Rawlins-KS

7

1s

35w

660'FNL 1980'FEL

County-State

S

T

R

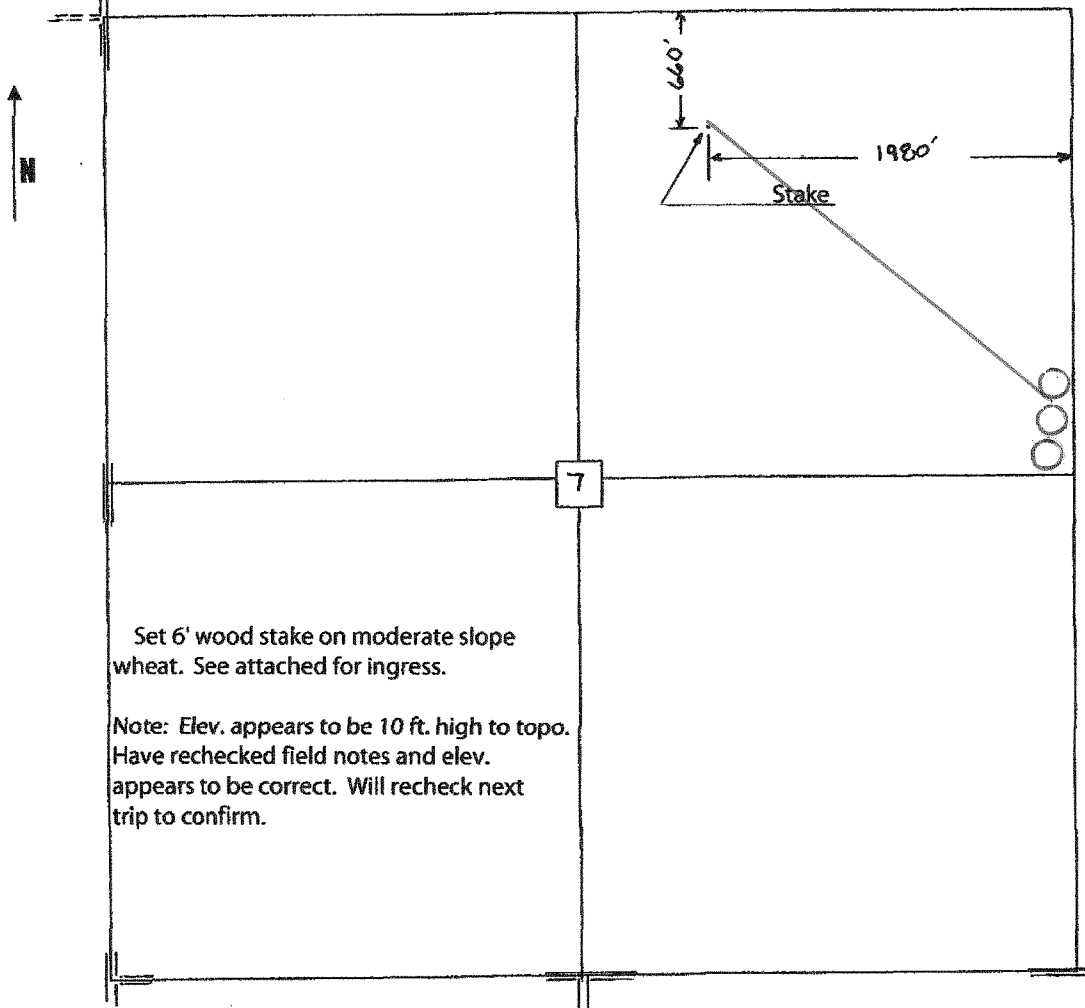
Location

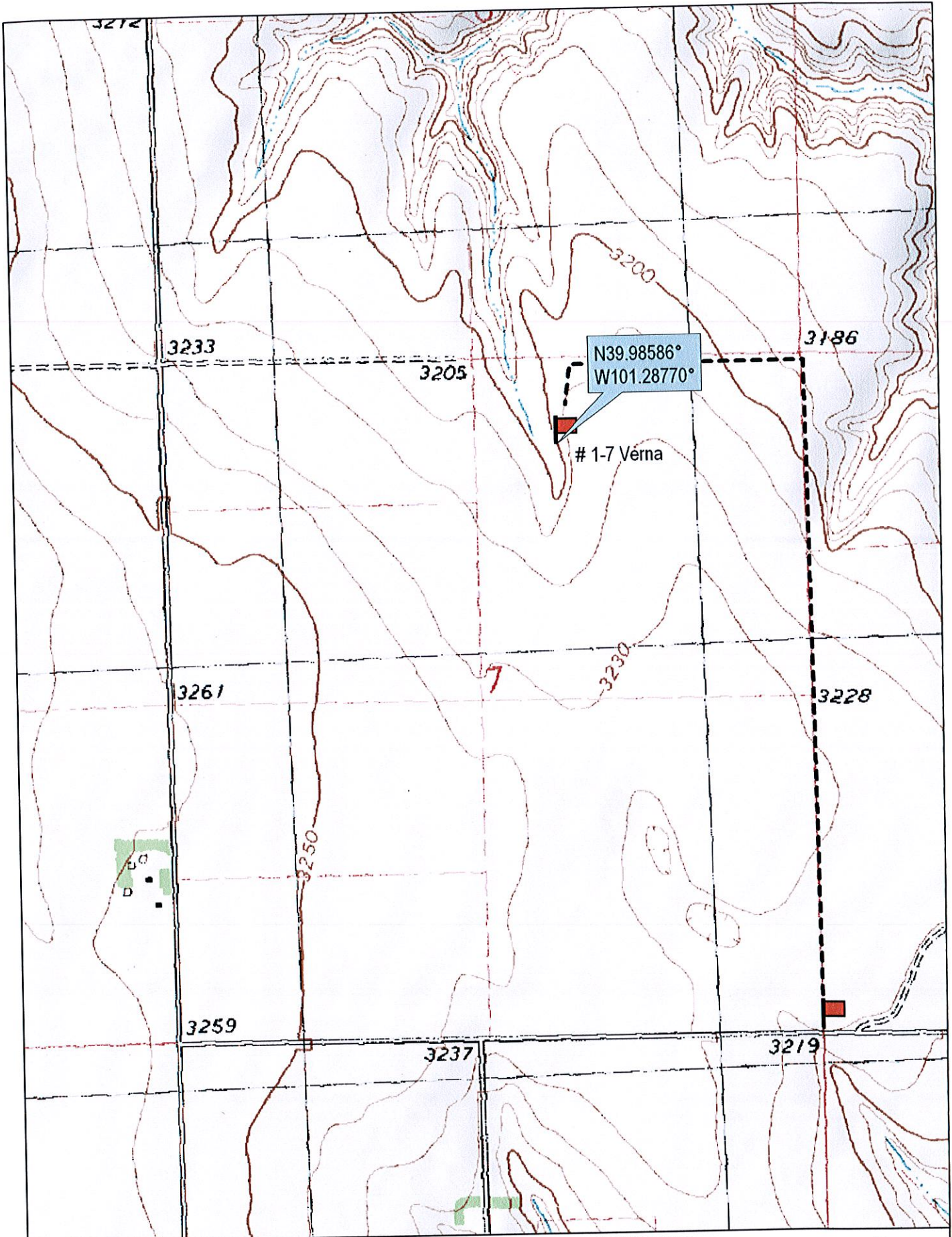
Murfin Drilling
250 N. Water
Suite 300
Wichita, KS. 67202

Elevation 3210 Gr.

Ordered By: Shauna

Scale 1"=1000'





© 2002 DeLorme. 3-D TopoQuads ®. Data copyright of content owner.
www.delorme.com

