

# GEOLOGIC REPORT

## DAVID J. GOLDAK

WICHITA, KANSAS  
Scale 1:240 (5"=100') Imperial  
Measured Depth Log

Well Name: Schroder #1-15  
API: API: 15-171-21059  
Location: Section 15 - T17S - R33W  
License Number: 6044  
Spud Date: 07 / 09 / 2014  
Surface Coordinates: 900' FNL and 2305' FEL  
NE - SW - NW - NE  
Bottom Hole Coordinates: 900' FNL and 2305' FEL  
NE - SW - NW - NE  
Ground Elevation (ft): 2996' K.B. Elevation (ft): 3007'  
Logged Interval (ft): 3700' To: 4790' Total Depth (ft): 4790'  
Formation: Mississippi  
Type of Drilling Fluid: Chemical - Mud-Co

Region: Scott Co., KS  
Drilling Completed: 07/16/2014

Printed by MUD.LOG from WellSight Systems 1-800-447-1534 www.WellSight.com

### OPERATOR

Company: Stelbar Oil Corporation  
Address: 1625 N. Waterfront Pkwy., Suite 200  
Wichita, Kansas 67206-6602

### GEOLOGIST

Name:	David J. Goldak	David J. Gould
Company:	D. J. GOLDAK, INC.	DMT Company
Address:	155 N. Market, Suite 710 Wichita, Kansas 67202	532 Sunrise Pratt, Kansas 67124

### General Info

CONTRACTOR: Sterling Drilling, Rig #2

#### BIT RECORD:

No.	Size	Make	Jets	Out	Feet	Hours
1	12-1/4	JZ-HAOOTC	3-14s	313	313	2.25
2	7-7/8	JZ-HAIP	?	408	95	1.25
3	7-7/8	Ulterra-U516M	5-16s			

SURVEYS: 313'-0.75, 4426'-1.75, 4565'-1.25, 4790'-1.25

#### GENERAL DRILLING & PUMP INFORMATION:

Drilling with 10,000-16,000 lbs on bit and 80-90 RPM.

Drilling with 7 stands of collars (6.25"x2.25"): 428.30'

Pumping 58-70 S/M; 8.9-10.8 B/M; 800-1000 psi at standpipe.

### Daily Status

07/09/14 - Spud at 4:45 PM; Set 8-5/8" csg at 308'  
07/10/14 - 313' WOC; DP at 11:15 AM; Bit trip at 408'  
07/11/14 - 2,412' Drilling; Displace mud @ 3,400'  
07/12/14 - 3,996' Drilling  
07/13/14 - 4,426' Prep for DST #1; DST #2 @ 4,426' in PM  
07/14/14 - 4530' CFS, Logging@ 3:30 PM  
07/15/14 - 4650' Short Trip for DST #4  
07/16/14 - 4790' Short Trip for Logs

### DSTs

DST #1: 4,379' - 4,426' (Marmaton)  
Misrun - Could not get to bottom

---

DST #2: 4,379' - 4,426' (Marmaton)

---

DST #3: 4,465' - 4,565' (Pawnee & Cherokee)

---

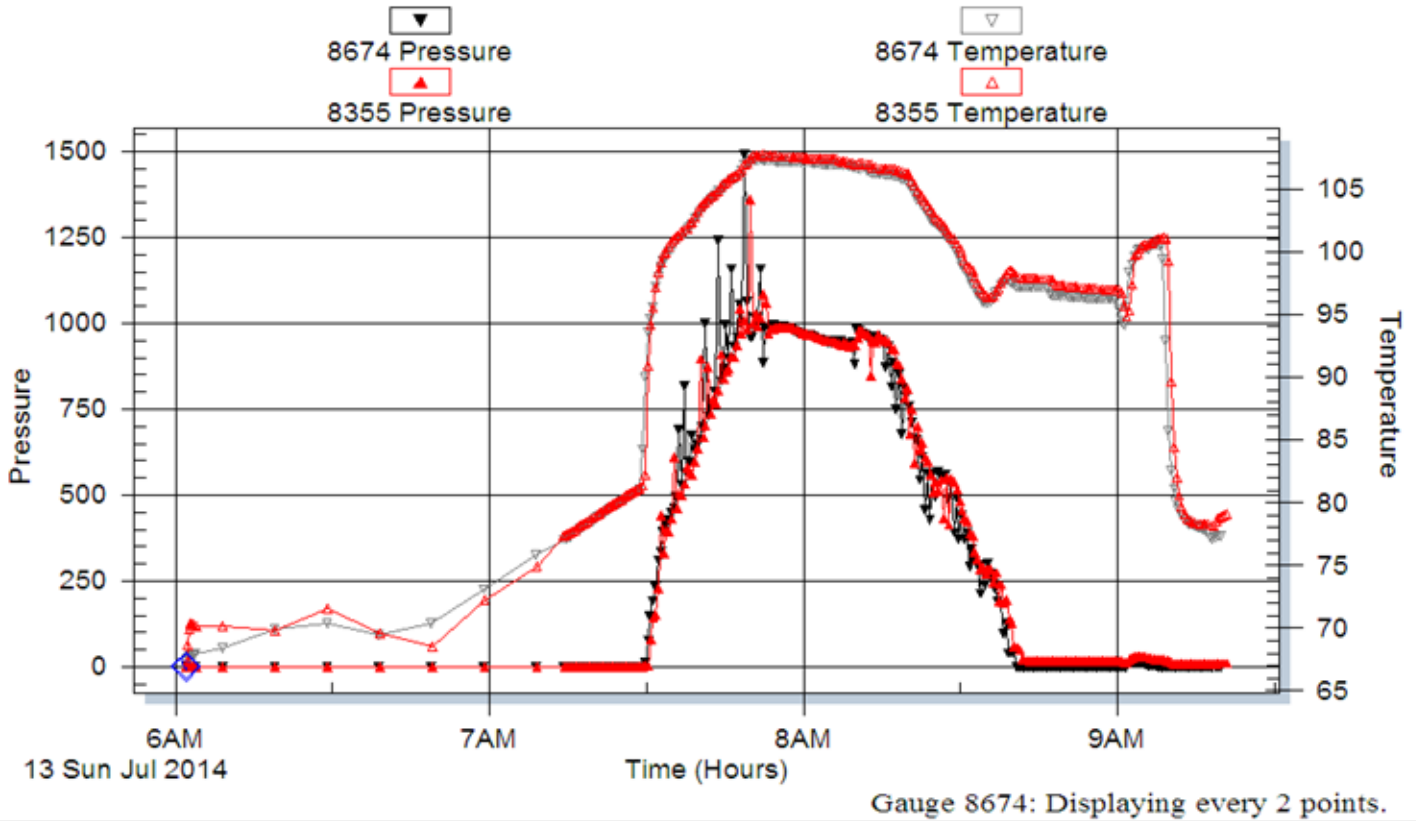
DST #4: 4,567' - 4,650' (Johnson Zone)

Well Name & No.: Schroder #1-15 Company: Stelbar Oil Corp Inc Test No.: 1

Interval Tested: 4379 – 4426 Zone Tested: Marmanton Times:

Misrun Hit bridge around 2540' pushed thru it and hit another one in about 5 feet, got thru it and hit another bridge then came out of hole with test tool.

### Pressure vs. Time



Well Name & No.: Schroder #1-15 Company: Stelbar Oil Corp Inc Test No.: 2

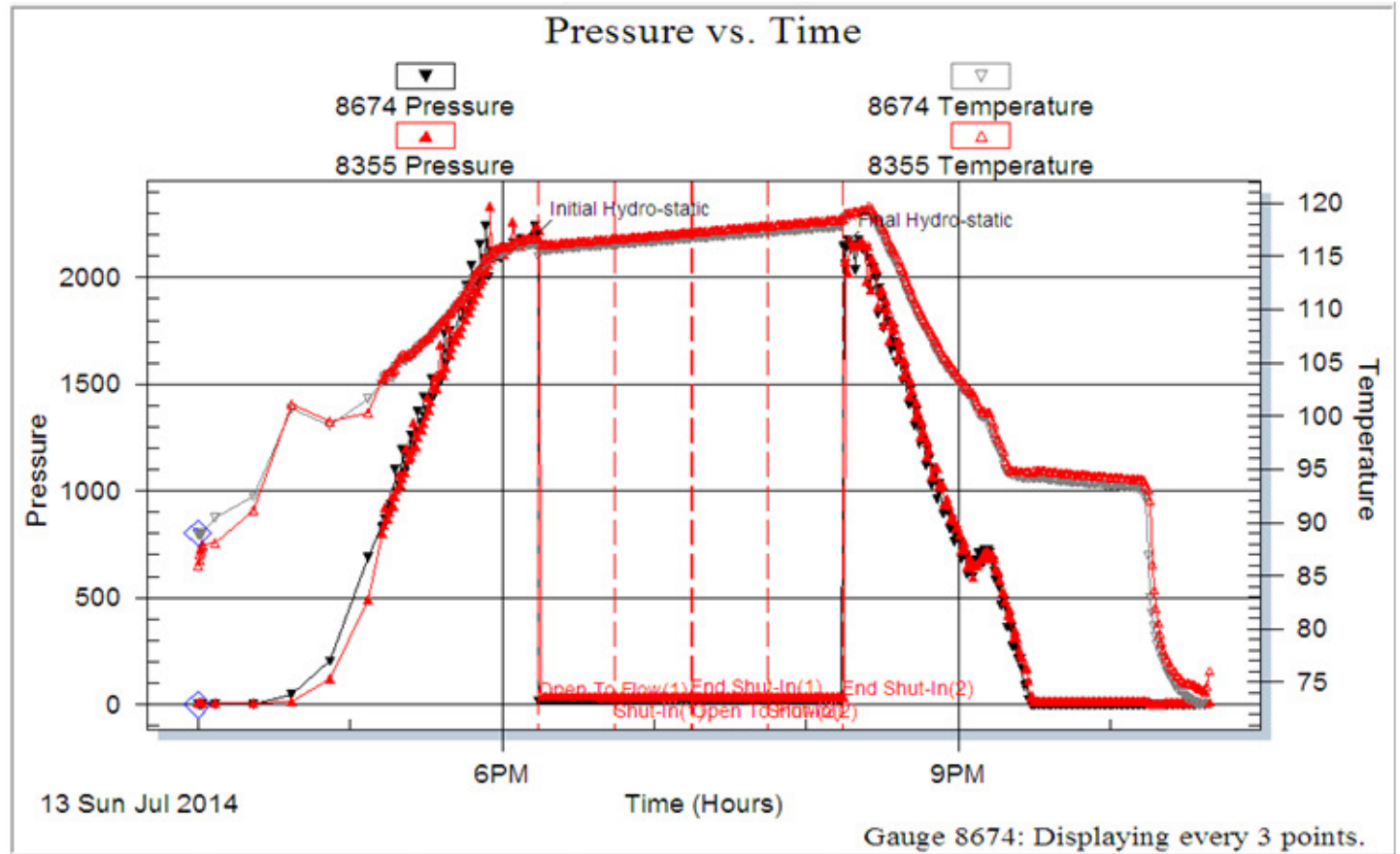
Interval Tested: 4379 – 4426 Zone Tested: Marmanton Times: 30-30-30-30

Blow Description: IFP: Weak surface blow died in 14 min. ISI: No Blow Back. FFP: No Blow FSI: No blow back

Rec: 2 Feet of WCM 2% Water 98% Mud, Rec. Total: 2', BHT: 118 Gravity: N/A

Initial Hydrostatic: 2226 First Initial Flow: 17 First Final Flow: 19 Initial Shut-In: 25

Second Initial Flow: 18 Second Final Flow: 20 Final Shut-In: 24 Final Hydrostatic: 2150



Well Name & No.: Schroder #1-15 Company: Stelbar Oil Corp Inc Test No.: 3

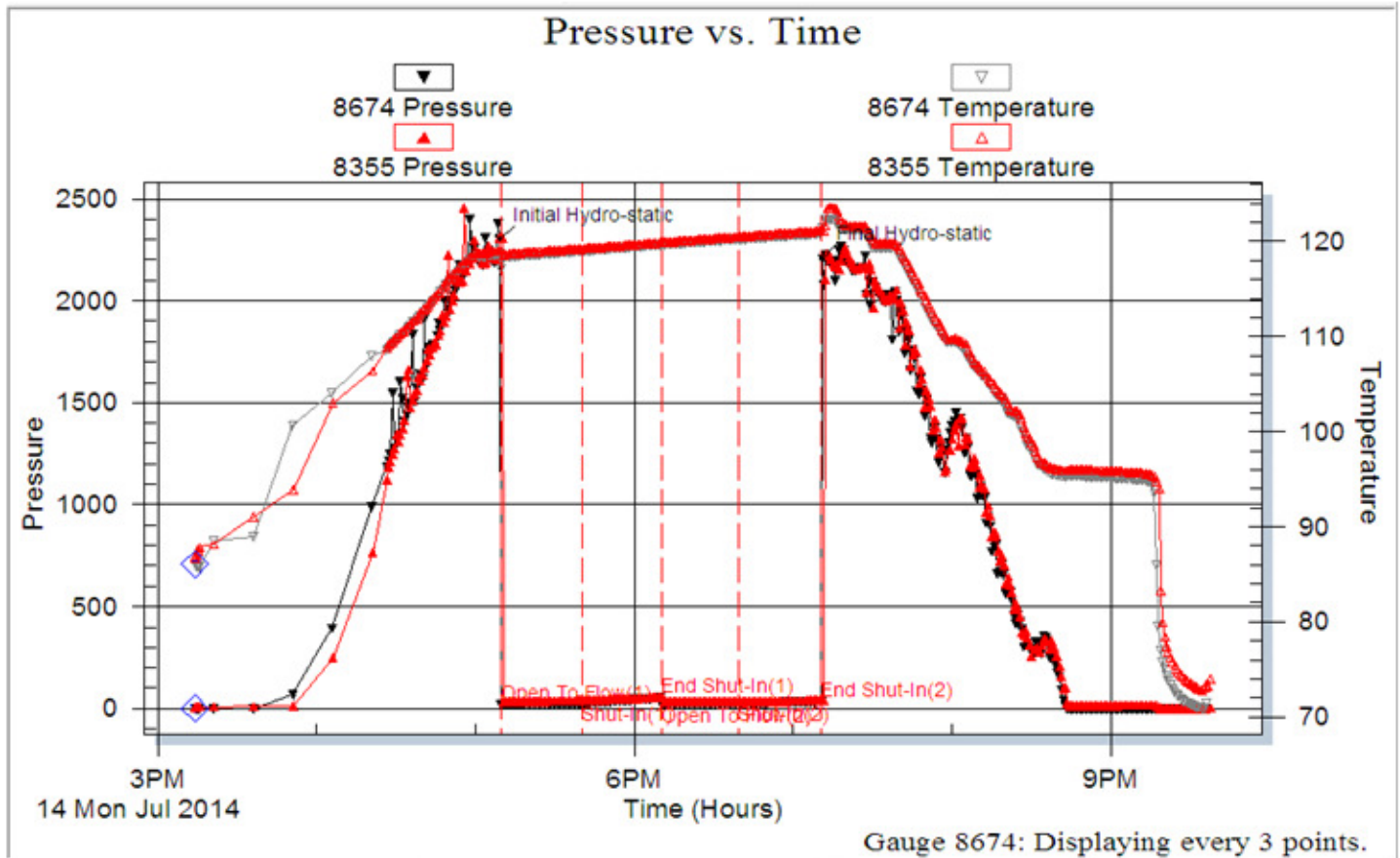
Interval Tested: 4465 – 4565 Zone Tested: Pawnee & Cherokee Times: 30-30-30-30

Blow Description: IFP: Weak surface blow ISI: No blow back FFP: No blow FSI: No blow back

Rec: 5 Feet of Mud with oil spots 100% Mud, Rec. Total: 5', BHT: 121 Gravity: N/A

Initial Hydrostatic: 2298 First Initial Flow: 18 First Final Flow: 25 Initial Shut-In: 53

Second Initial Flow: 18 Second Final Flow: 23 Final Shut-In: 36 Final Hydrostatic: 2206



Well Name & No.: Schroder #1-15 Company: Stelbar Oil Corp Inc Test No.: 4

Interval Tested: 4567 – 44650 Zone Tested: Johnson Zone Times: 30-30-30-30

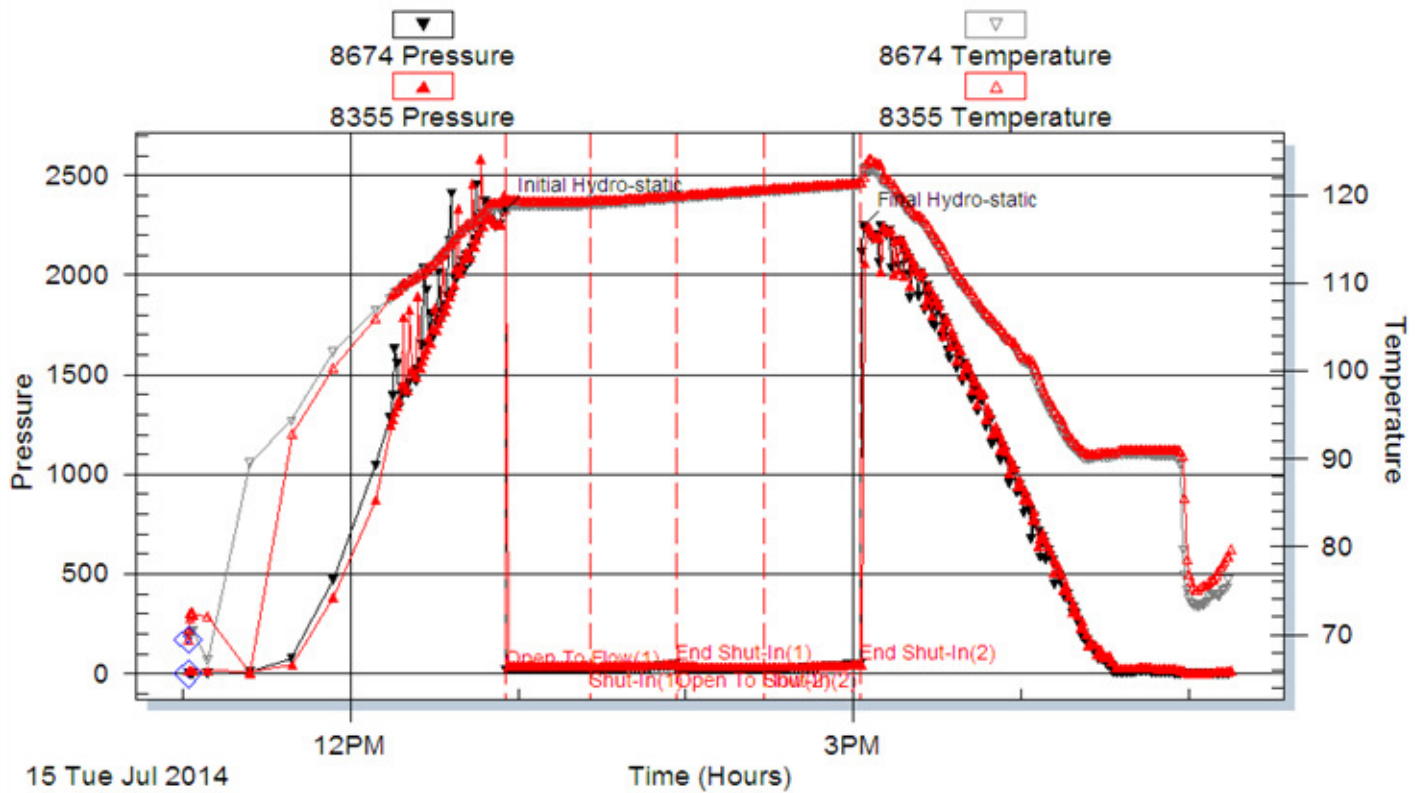
Blow Description: IFP: Weak surface blow ¼" ISI: No blow back FFP: No blow FSI: No blow back

Rec: 5 Feet of Mud with few oil spots, 1% Mud Rec. Total: 5', BHT: 122 Gravity: N/A

Initial Hydrostatic: 2325 First Initial Flow: 18 First Final Flow: 20 Initial Shut-In: 42

Second Initial Flow: 19 Second Final Flow: 21 Final Shut-In: 46 Final Hydrostatic: 2249

### Pressure vs. Time



Gauge 8674: Displaying every 3 points.

### ROCK TYPES

- Anhy
- Bent
- Brec
- Cht
- Clyst
- Coal
- Congl
- Dol

- Gyp
- Igne
- Lmst
- Meta
- Mrlst
- Salt
- Shale
- Shcol

- Shgy
- Slst
- Ss
- Till
- Carb sh
- Dol
- Dtd
- Gry sh

- Sandylms
- Shale
- Slstn
- Shlyslts
- Sltysh
- Lms

### ACCESSORIES

#### MINERAL

- Anhy
- Arggrn
- Arg
- Bent
- Bit
- Brecfrag
- Calc
- Carb
- Chtdk
- Chtlt
- Dol
- Feldspar
- Ferrpel
- Ferr
- Glau
- Gyp
- Hvymin
- Kaol
- Marl
- Minxl
- Nodule
- Phos
- Pyr



- Salt
- Sandy
- Silt
- Sil
- Sulphur
- Tuff
- Chlorite
- Dol
- Sand
- Silty

#### FOSSIL

- Algae
- Amph
- Belm
- Bioclst
- Brach
- Bryozoa
- Cephal
- Coral
- Crin
- Echin
- Fish
- Foram



- Fossil
- Gastro
- Oolite
- Ostra
- Pelec
- Pellet
- Pisolite
- Plant
- Strom
- Fuss
- Oomold

#### STRINGER

- Anhy
- Arg
- Bent
- Coal
- Dol
- Gyp
- Ls
- Mrst
- Sltstrg
- Ssstrg
- Carbsh



- Clystn
- Dol
- Grysh
- Gryslt
- Lms
- Sandylms
- Sh
- Sltstn

#### TEXTURE

- Boundst
- Chalky
- Cryxln
- Earthy
- Finexln
- Grainst
- Lithogr
- Microxln
- Mudst
- Packst
- Wackest

### OTHER SYMBOLS

#### POROSITY TYPE

- Earthy
- Fenest
- Fracture
- Inter
- Moldic
- Organic
- Pinpoint
- Vuggy

#### SORTING

- Well
- Moderate
- Poor

#### ROUNDING

- Rounded
- Subrnd
- Subang
- Angular

#### OIL SHOWS

- Even
- Spotted
- Ques
- Dead
- Gas show

#### INTERVALS

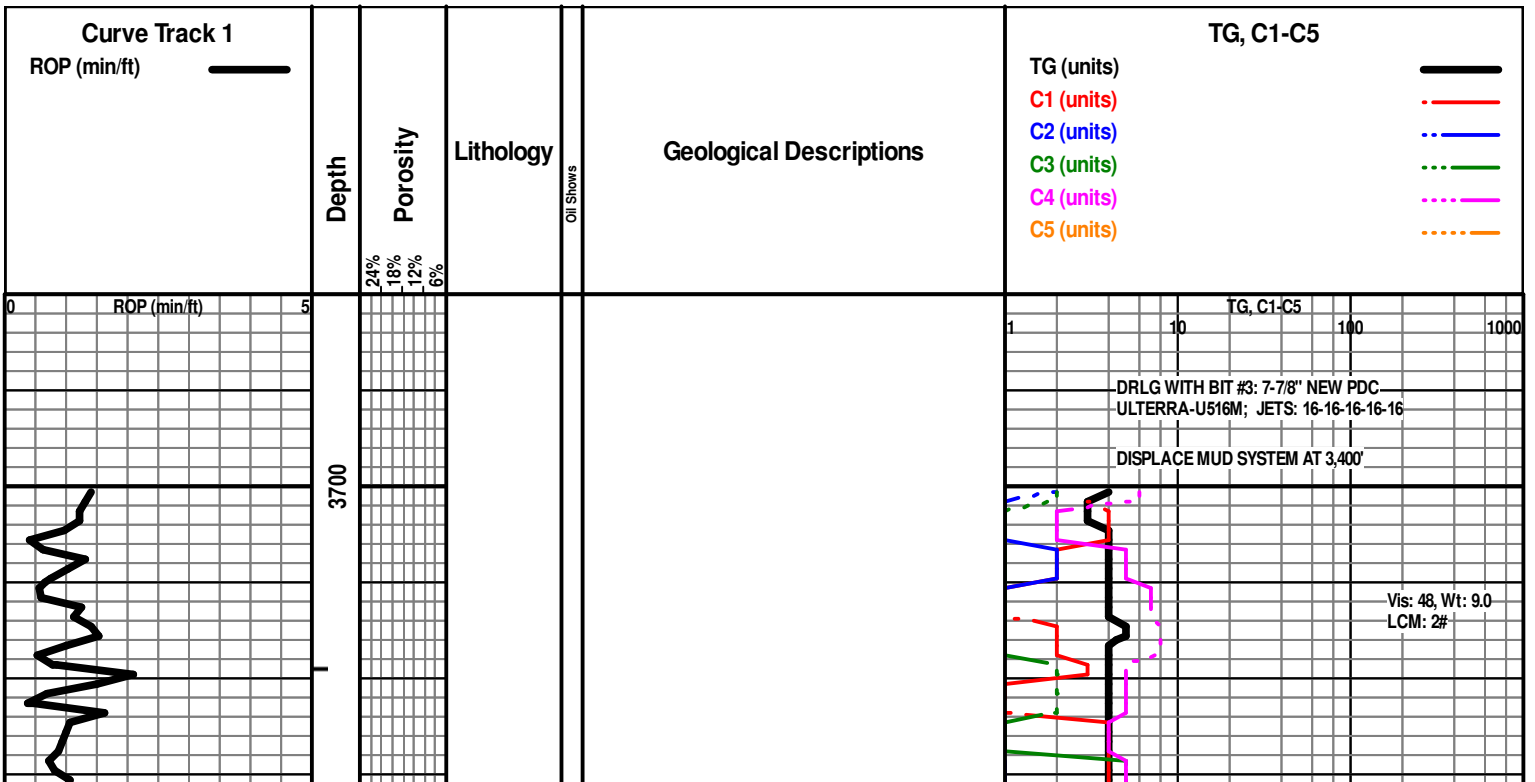
- Core
- Dst

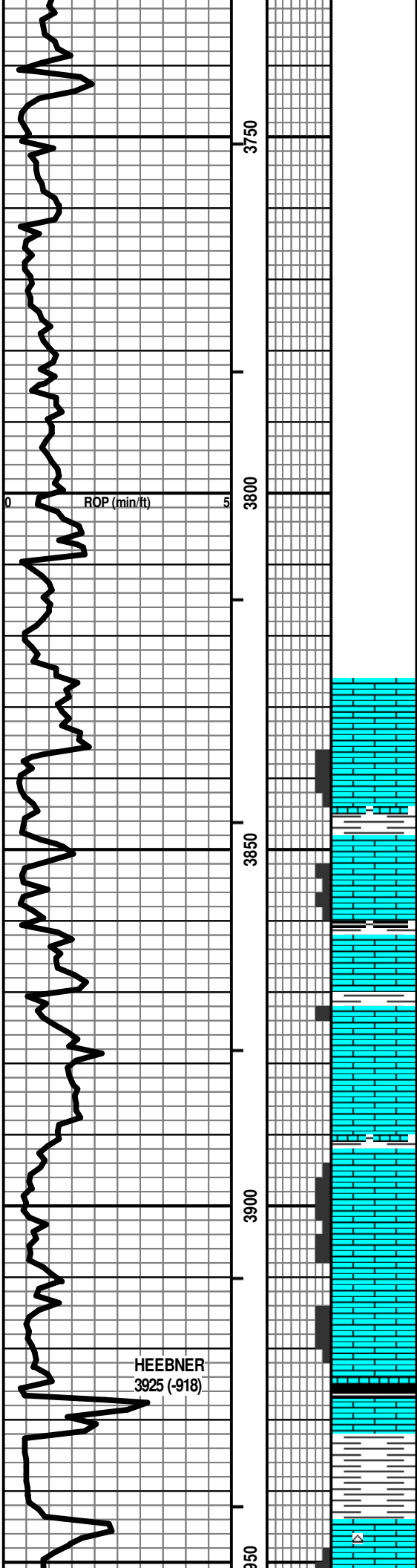


- Dst\_1\_t
- Dst\_1\_b
- Dst

#### EVENTS

- Rft
- Sidewall
- Conn





LS - CRM / TAN / BRN, VF / F XLN, FOSS IN PT, PRED DNS, NS

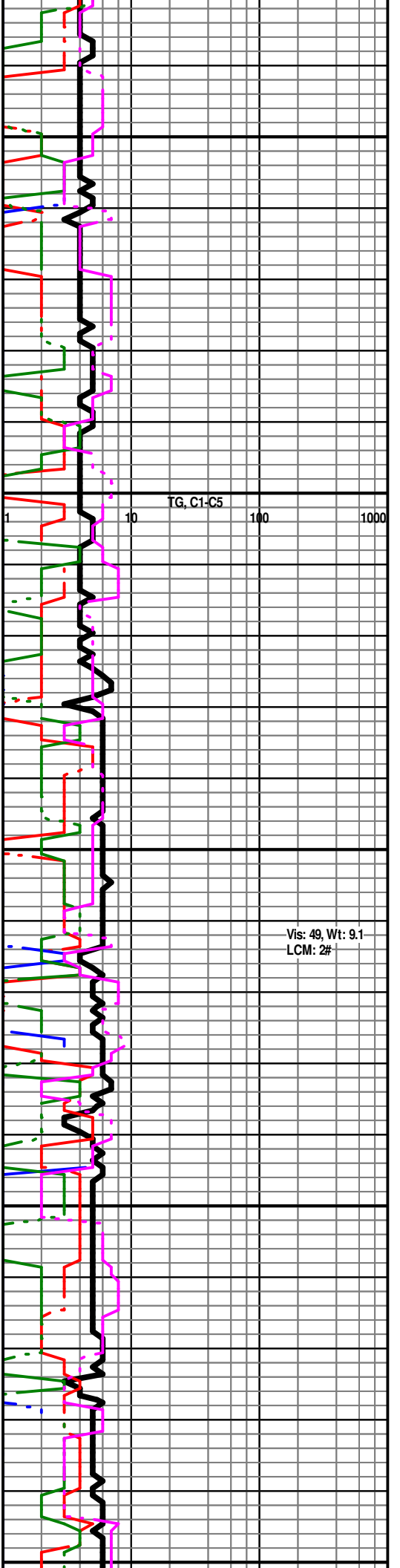
LS - CRM / TAN, F / VF XLN, FOSS IN PT, F / G INTXLN + PPT POR IN PT, TR VUG POR, NS W/ SCAT SH - LT / DK GY

LS - CRM / SCAT TAN, VF / F XLN, SL FOSS, TR PORAS ABOVE, PRED DNS, NS

LS - TAN / BRN / GY, MOT IN PT, VF / F XLN, FOSS IN PT, SUBCHKY IN PT, PRED DNS, NS

LS - CRM / TAN, F / VF XLN, FOSS IN PT, F / G INTXLN + PPT POR, CHKY / DNS IN PT, NS

SH - BLK, CARB W/ LS - TAN, VF / F XLN, SL FOSS, DNS W/ SH - GY / GRN, SLTY IN PT



Vis: 49, Wt: 9.1  
LCM: 2#

HEEBNER  
3925 (-918)



LS - CRM / WHT, VF / F XLN, SL FOSS, F INTXLN + PPT  
POR IN PT, TR VUG POR, CHKY IN PT, NS W/ CHT -  
WHT / CRM / TAN / GY

LANSING  
3969 (-962)

LS - CRM / TAN, F / VF XLN, OOL + FOSS IN PT, F / SCAT  
G INTXLN / INTPART POR, CHKY IN PT, PRED DNS, NS  
W/ SCAT CHT - WHT / LT GY

LS - AS ABOVE, PRED DNS, NS W/ SCAT CHT - WHT /  
LT GY W/ SH - GY / BLK

LS - CRM / TAN, F / VF XLN, OOL IN PT, SL FOSS, P / F  
INTXLN + PPT POR, SUBCHKY IN PT / DNS, TR SPTY  
DEAD STN, NSFO, NO ODOR

LS - AS ABOVE, P / F INTXLN + PPT + VUG POR, CHKY /  
DNS IN PT, NS

LS - CRM / TAN / GY, VF / F XLN, FOSS + OOL IN PT,  
SCAT P / F INTXLN + PPT POR, SUBCHKY / DNS, NS

LS - CRM / SCAT TAN, VF / F XLN, FOSS IN PT, SCAT  
OOL, SCAT P INTXLN POR, NS

LS - CRM, VF / F XLN, SCAT OOL + FOSS, SCAT P / TR F  
INTXLN POR, SCAT CHKY, PRED DNS, NS W/ SCAT  
CHT - LT GY / WHT

LS - CRM / TAN, VF / F XLN, SCAT OOL + FOSS, SCAT P /  
TR F INTXLN + VUG POR, CHKY IN PT / PRED DNS, NS  
W/ SCAT CHT - LT GY / WHT

LS - TAN / GY, MOT, F XLN, SCAT OOL, PRED DNS, NS  
W/ SH - BLK + CARB / GY

LS - CRM / LT GY, VF / F XLN, SCAT OOL, TR INTXLN

TG, C1-C5  
1 10 100 1000

Vis: 47, Wt: 9.1,  
YP: 15, GelS: 7/22,  
pH: 11.0, WL: 8.8,  
ChI: 3500, Sol: 5.3,  
LCM: 1#

A

B

C

D

E

F

G

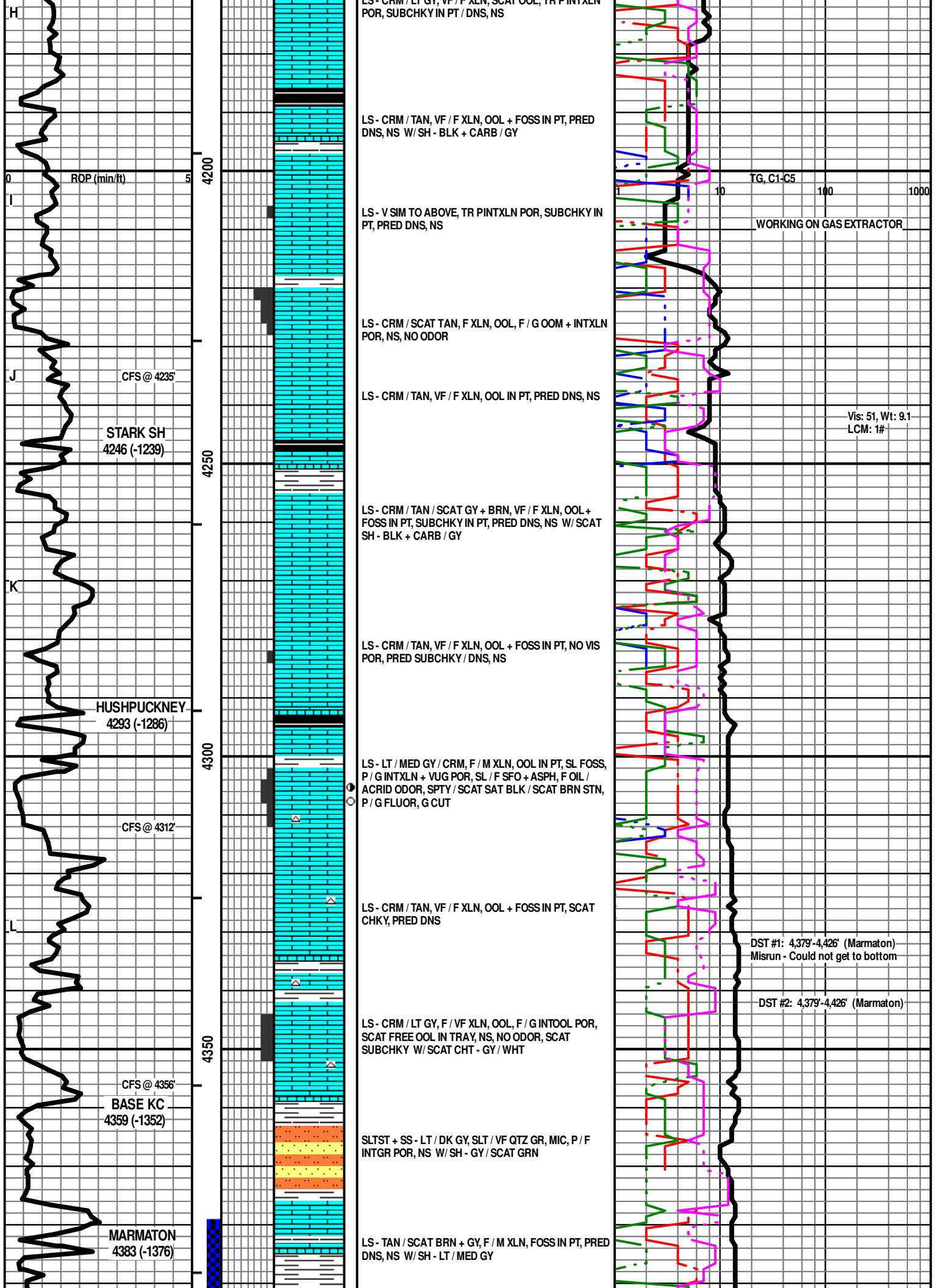
ROP (min/ft)

CFS @ 4021'

CFS @ 4074'

MUNCIE CREEK  
4146 (-1139)

30  
4000  
4050  
4100  
4150



LS - CRM / LT GY, VF / F XLN, SCAT OOL, TR PINTXLN POR, SUBCHKY IN PT / DNS, NS

LS - CRM / TAN, VF / F XLN, OOL + FOSS IN PT, PRED DNS, NS W/ SH - BLK + CARB / GY

LS - V SIM TO ABOVE, TR PINTXLN POR, SUBCHKY IN PT, PRED DNS, NS

LS - CRM / SCAT TAN, F XLN, OOL, F / G OOM + INTXLN POR, NS, NO ODOR

LS - CRM / TAN, VF / F XLN, OOL IN PT, PRED DNS, NS

LS - CRM / TAN / SCAT GY + BRN, VF / F XLN, OOL + FOSS IN PT, SUBCHKY IN PT, PRED DNS, NS W/ SCAT SH - BLK + CARB / GY

LS - CRM / TAN, VF / F XLN, OOL + FOSS IN PT, NO VIS POR, PRED SUBCHKY / DNS, NS

LS - LT / MED GY / CRM, F / M XLN, OOL IN PT, SL FOSS, P / G INTXLN + VUG POR, SL / F SFO + ASPH, F OIL / ACRID ODOR, SPTY / SCAT SAT BLK / SCAT BRN STN, P / G FLUOR, G CUT

LS - CRM / TAN, VF / F XLN, OOL + FOSS IN PT, SCAT CHKY, PRED DNS

LS - CRM / LT GY, F / VF XLN, OOL, F / G INTOOL POR, SCAT FREE OOL IN TRAY, NS, NO ODOR, SCAT SUBCHKY W/ SCAT CHT - GY / WHT

SLTST + SS - LT / DK GY, SLT / VF QTZ GR, MIC, P / F INTGR POR, NS W/ SH - GY / SCAT GRN

LS - TAN / SCAT BRN + GY, F / M XLN, FOSS IN PT, PRED DNS, NS W/ SH - LT / MED GY

TG, C1-C5 10 100 1000

WORKING ON GAS EXTRACTOR

Vis: 51, Wt: 9.1 LCM: 1#

DST #1: 4,379'-4,426' (Marmaton) Misrun - Could not get to bottom

DST #2: 4,379'-4,426' (Marmaton)

H  
I  
J  
K  
L

ROP (min/ft)

CFS @ 4235'

STARK SH  
4246 (-1239)

HUSHPUCKNEY  
4293 (-1286)

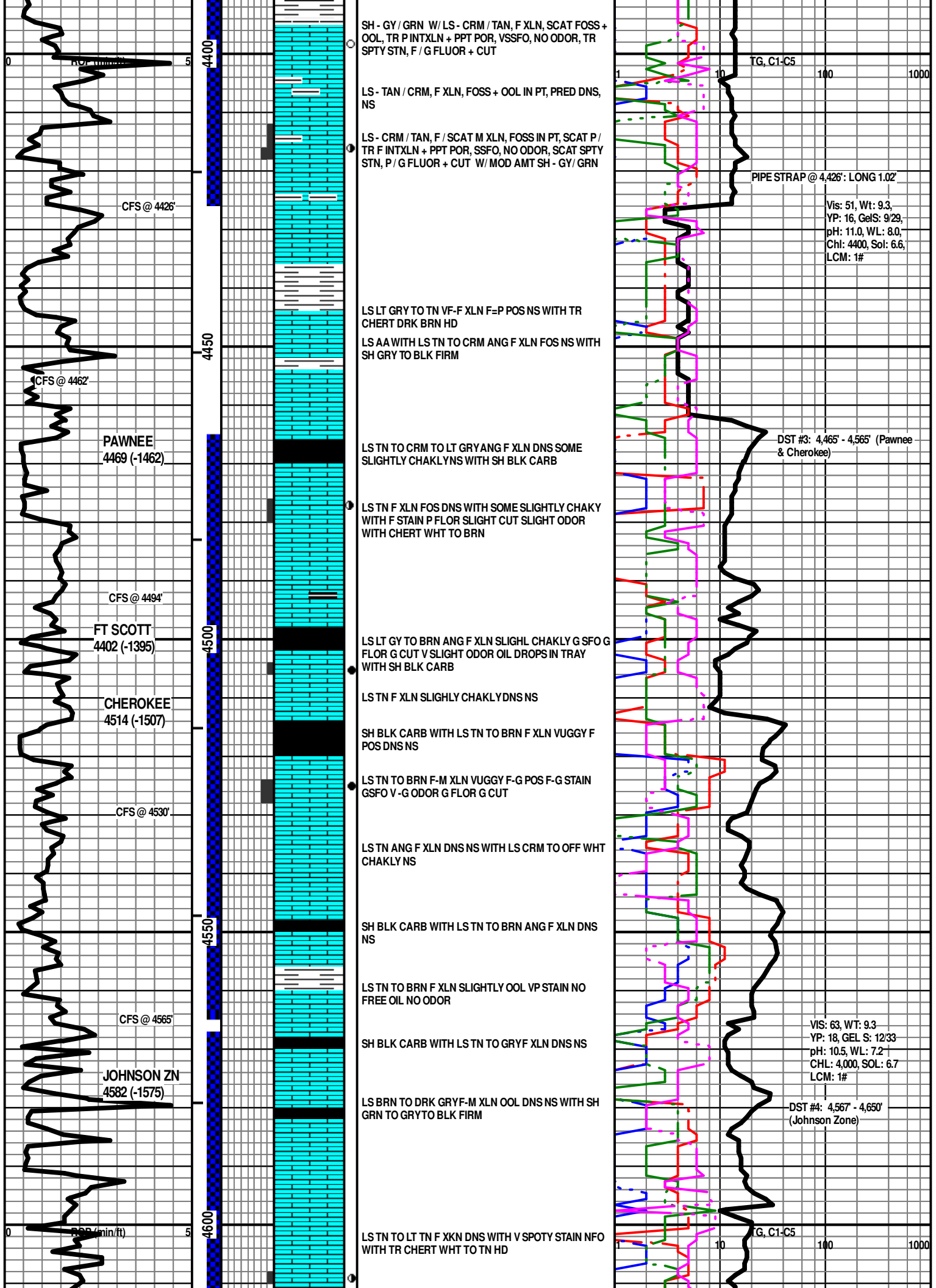
CFS @ 4312'

CFS @ 4356'

BASE KC  
4359 (-1352)

MARMATON  
4383 (-1376)

4200  
4250  
4300  
4350



SH - GY / GRN W / LS - CRM / TAN, F XLN, SCAT FOSS + OOL, TR P INTXLN + PPT POR, VSSFO, NO ODOR, TR SPTY STN, F / G FLUOR + CUT

LS - TAN / CRM, F XLN, FOSS + OOL IN PT, PRED DNS, NS

LS - CRM / TAN, F / SCAT M XLN, FOSS IN PT, SCAT P / TR F INTXLN + PPT POR, SSFO, NO ODOR, SCAT SPTY STN, P / G FLUOR + CUT W / MOD AMT SH - GY / GRN

LS LT GRY TO TN VF-F XLN F=P POS NS WITH TR CHERT DRK BRN HD

LS AA WITH LS TN TO CRM ANG F XLN FOS NS WITH SH GRY TO BLK FIRM

LS TN TO CRM TO LT GRY ANG F XLN DNS SOME SLIGHTLY CHAKLYNS WITH SH BLK CARB

LS TN F XLN FOS DNS WITH SOME SLIGHTLY CHAKY WITH F STAIN P FLOR SLIGHT CUT SLIGHT ODOR WITH CHERT WHT TO BRN

LS LT GY TO BRN ANG F XLN SLIGHL CHAKLY G SFO G FLOR G CUT V SLIGHT ODOR OIL DROPS IN TRAY WITH SH BLK CARB

LS TN F XLN SLIGHTLY CHAKLY DNS NS

SH BLK CARB WITH LS TN TO BRN F XLN VUGGY F POS DNS NS

LS TN TO BRN F-M XLN VUGGY F-G POS F-G STAIN GSFO V-G ODOR G FLOR G CUT

LS TN ANG F XLN DNS NS WITH LS CRM TO OFF WHT CHAKLY NS

SH BLK CARB WITH LS TN TO BRN ANG F XLN DNS NS

LS TN TO BRN F XLN SLIGHTLY OOL VP STAIN NO FREE OIL NO ODOR

SH BLK CARB WITH LS TN TO GRYF XLN DNS NS

LS BRN TO DRK GRYF-M XLN OOL DNS NS WITH SH GRN TO GRYTO BLK FIRM

LS TN TO LT TN F XKN DNS WITH V SPOTY STAIN NFO WITH TR CHERT WHT TO TN HD

TG, C1-C5 100 1000

PIPE STRAP @ 4,426' LONG 1.02'

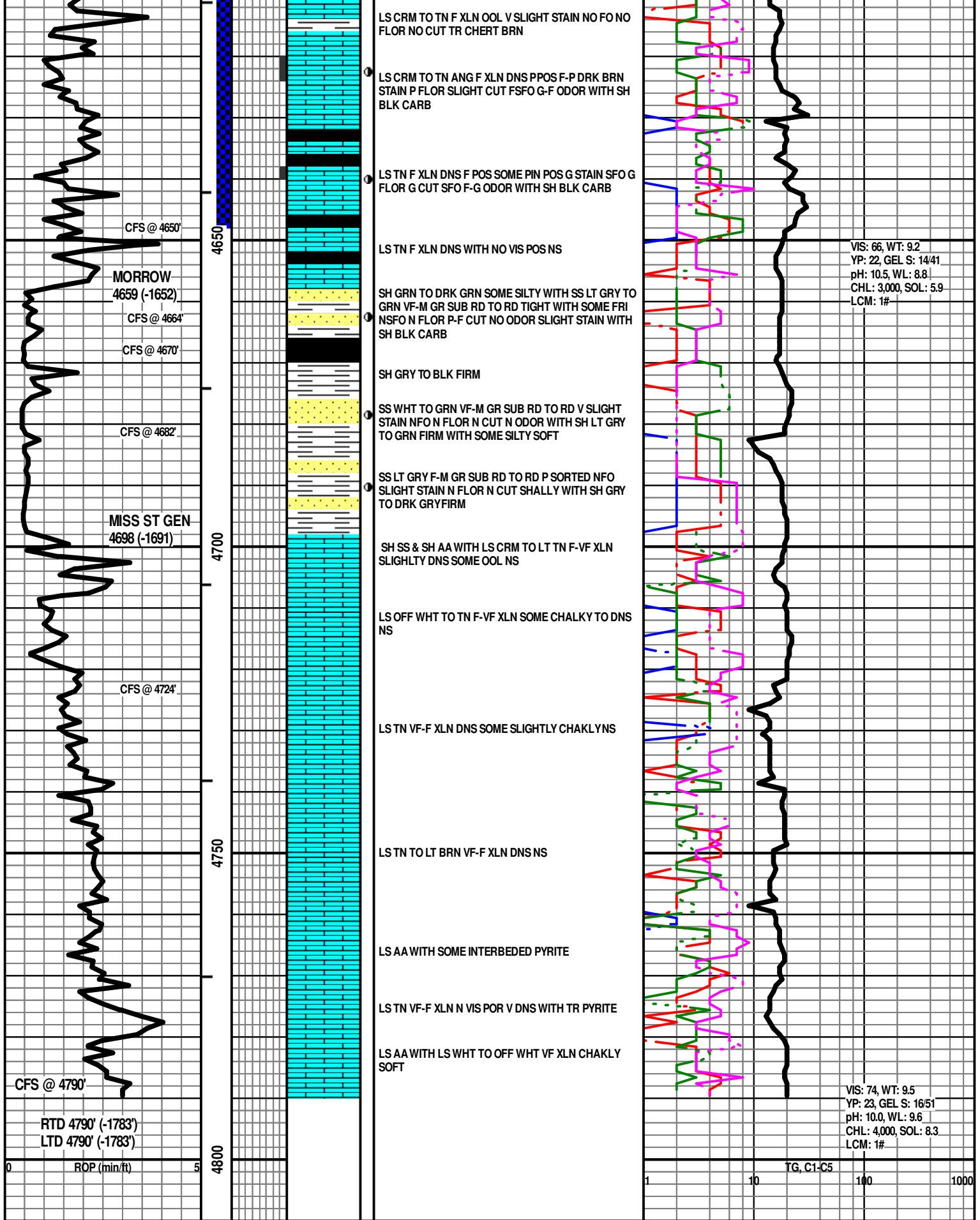
Vis: 51, Wt: 9.3, YP: 16, GelS: 9/29, pH: 11.0, WL: 8.0, Chl: 4400, Sol: 6.6, LCM: 1#

DST #3: 4,465' - 4,565' (Pawnee & Cherokee)

VIS: 63, WT: 9.3 YP: 18, GEL S: 12/33 pH: 10.5, WL: 7.2 CHL: 4,000, SOL: 6.7 LCM: 1#

DST #4: 4,567' - 4,650' (Johnson Zone)

TG, C1-C5 10 100 1000



LS CRM TO TN F XLN OOL V SLIGHT STAIN NO FO NO FLOR NO CUT TR CHERT BRN

LS CRM TO TN ANG F XLN DNS PPOS F-P DRK BRN STAIN P FLOR SLIGHT CUT FSFO G-F ODOR WITH SH BLK CARB

LS TN F XLN DNS F POS SOME PIN POS G STAIN SFO G FLOR G CUT SFO F-G ODOR WITH SH BLK CARB

LS TN F XLN DNS WITH NO VIS POS NS

SH GRN TO DRK GRN SOME SILTY WITH SS LT GRY TO GRN VF-M GR SUB RD TO RD TIGHT WITH SOME FRI NSFO N FLOR P-F CUT NO ODOR SLIGHT STAIN WITH SH BLK CARB

SH GRY TO BLK FIRM

SS WHT TO GRN VF-M GR SUB RD TO RD V SLIGHT STAIN NFO N FLOR N CUT N ODOR WITH SH LT GRY TO GRN FIRM WITH SOME SILTY SOFT

SS LT GRY F-M GR SUB RD TO RD P SORTED NFO SLIGHT STAIN N FLOR N CUT SHALLY WITH SH GRY TO DRK GRY FIRM

SH SS & SH AA WITH LS CRM TO LT TN F-VF XLN SLIGHTLY DNS SOME OOL NS

LS OFF WHT TO TN F-VF XLN SOME CHALKY TO DNS NS

LS TN VF-F XLN DNS SOME SLIGHTLY CHAKLYNS

LS TN TO LT BRN VF-F XLN DNS NS

LS AA WITH SOME INTERBEDED PYRITE

LS TN VF-F XLN N VIS POR V DNS WITH TR PYRITE

LS AA WITH LS WHT TO OFF WHT VF XLN CHAKLY SOFT

VIS: 66, WT: 9.2  
 YP: 22, GEL S: 14/41  
 pH: 10.5, WL: 8.8  
 CHL: 3,000, SOL: 5.9  
 LCM: 1#

VIS: 74, WT: 9.5  
 YP: 23, GEL S: 16/51  
 pH: 10.0, WL: 9.6  
 CHL: 4,000, SOL: 8.3  
 LCM: 1#

CFS @ 4650'

MORROW  
 4659 (-1652)

CFS @ 4664'

CFS @ 4670'

CFS @ 4682'

MISS ST GEN  
 4698 (-1691)

CFS @ 4724'

CFS @ 4790'

RTD 4790' (-1783')  
 LTD 4790' (-1783')

ROP (min/ft)

TG, C1-C5