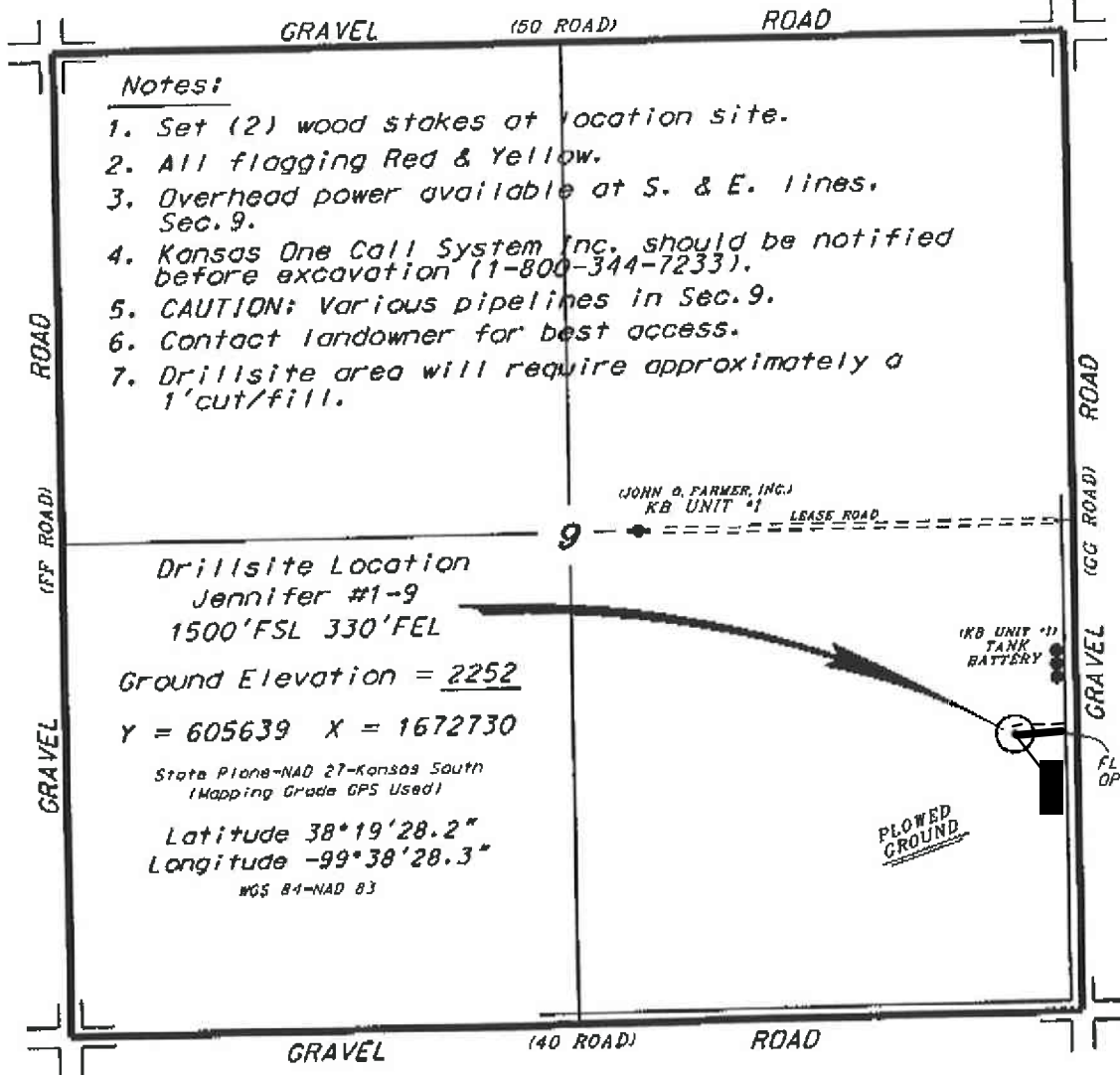


L.D. DRILLING, INC.
JENNIFER LEASE
SE. 1/4, SECTION 9, T20S, R21W
NESS COUNTY, KANSAS

Directions:

From the intersection of Highway 96 and Highway 283 in Ness City, Kansas go 9.0 miles South on Highway 283, then go 14.0 miles East on a county road to the SE. corner of Section 9, then go 0.28 miles North to a flag on the west edge of road, then go 0.06 miles West to location.



Notes:

1. Set (2) wood stakes at location site.
2. All flagging Red & Yellow.
3. Overhead power available at S. & E. lines, Sec. 9.
4. Kansas One Call System Inc. should be notified before excavation (1-800-344-7233).
5. CAUTION: Various pipelines in Sec. 9.
6. Contact landowner for best access.
7. Drillsite area will require approximately a 1' cut/fill.

Drillsite Location
Jennifer #1-9
1500'FSL 330'FEL
Ground Elevation = 2252
Y = 605639 X = 1672730
State Plane-NAD 27-Kansas South
(Mapping Grade GPS Used)
Latitude 38°19'28.2"
Longitude -99°38'28.3"
NGS 84-NAD 83

*Ingress and egress to location as shown on this plot is per usage only and may not be legally opened for public use. Contact landowner, tenant and county road department for access.



* Controlling data is based upon the best maps and photographs available to us and upon a regular section of land containing 640 acres.
 * Approximate section lines were determined using the normal standard of care of oilfield surveyors practicing in the state of Kansas. The section corners, which establish the precise section lines, were not necessarily located, and the exact location of the drillsite location in the section is not guaranteed. Therefore, the operator assuming this service and accepting this plot and all other parties relying thereon agree to hold Central Kansas Oilfield Services, Inc., its officers and employees harmless from all losses, costs and expenses and said entities released from any liability from incidental or consequential damages.
 * Elevations derived from National Geodetic Vertical Datum.

Date August 8, 2014