

# ADVANTAGE ELEVATIONS

OIL FIELD SURVEYORS

BOX 8604 - PRATT, KS 67124  
(620) 672-6491

86141

INVOICE NO.

CHIEFTAIN OIL CO INC

OPERATOR

24

NO.

MOLZ

FARM

Barber

COUNTY

11

S

35s

T

12w

R

2460' FSL & 340' FEL of Sec.

LOCATION

ELEVATION: 1386' GR

CHIEFTAIN OIL CO INC  
PO Box 124  
Kiowa, KS 67070-0124

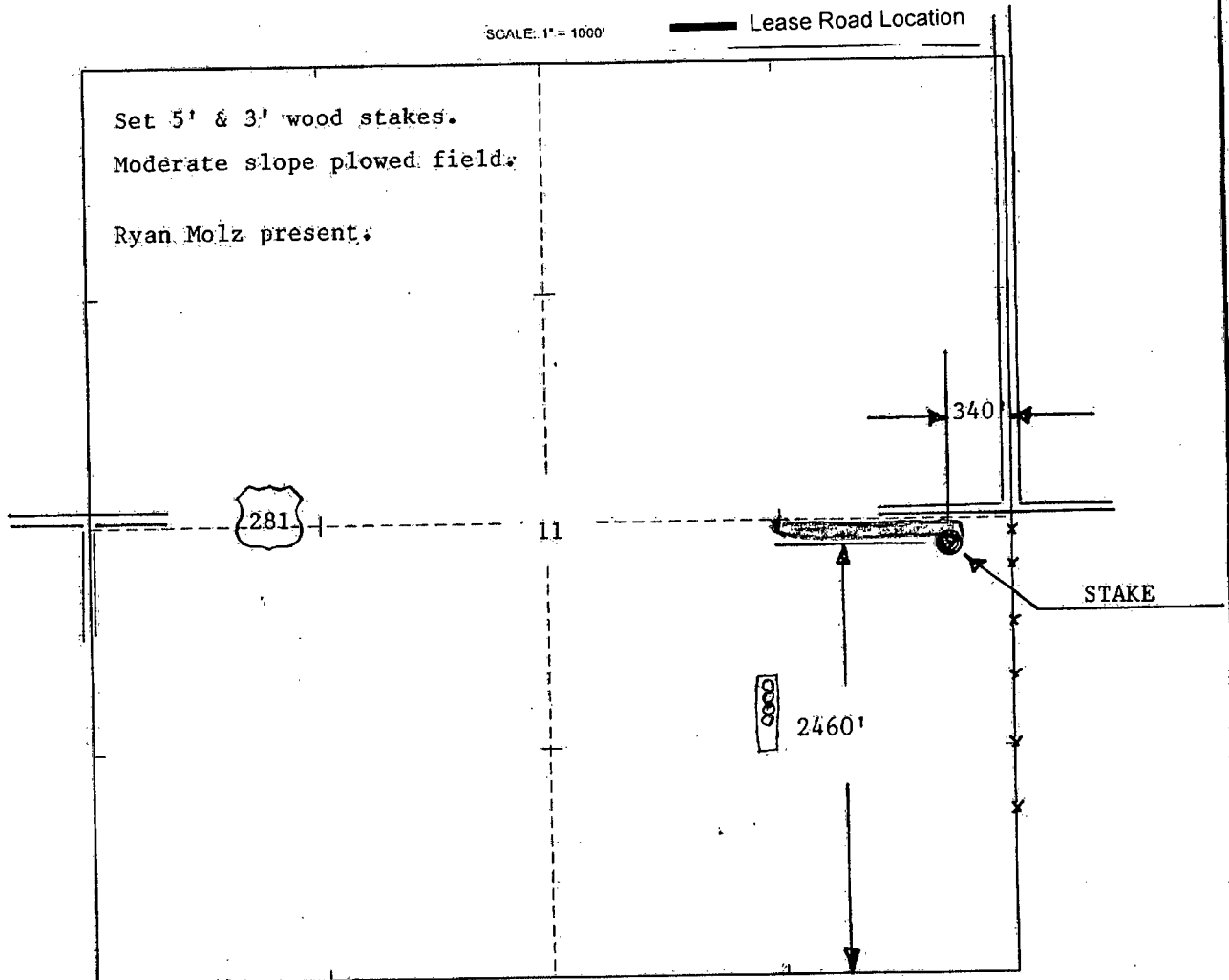


AUTHORIZED BY: Ryan Molz

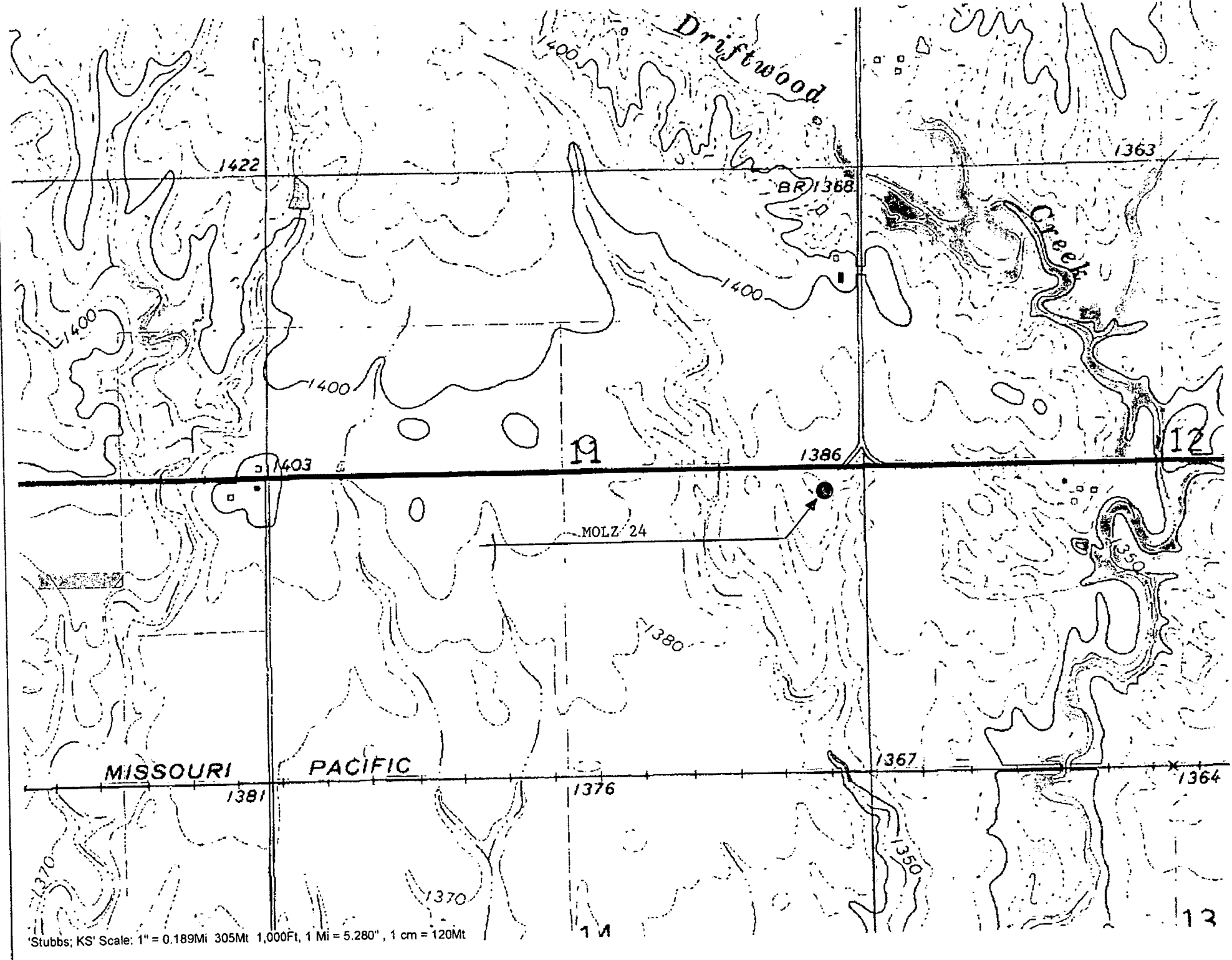
## LEGEND

- Well Location
- Tank Battery Location
- Pipeline Location
- - - - Electric Line Location
- ▬ Lease Road Location

SCALE: 1" = 1000'



DATE STAKED: 8/6/14



Stubbs, KS' Scale: 1" = 0.189Mi 305Mt 1,000Ft, 1 Mi = 5.280", 1 cm = 120Mt