

AUSTIN B. KLAUS



Cell 785.650.3629
Work 785.483.3145
Ext 225

PO BOX 352
Russell, KS 67665
austin.klaus@johnofarmer.com

Scale 1:240 (5"=100') Imperial
Measured Depth Log

Well Name: Johnson D #1
Location: Russell County
License Number: API #15-167-23978-00-00
Spud Date: 6/18/14
Surface Coordinates: Section 35 - Township 13 South - Range 15 West
2,470' FSL & 1,145' FWL
Bottom Hole Coordinates: Vertical well with minimal deviation, same as above
Ground Elevation (ft): 1,895' **K.B. Elevation (ft):** 1,903'
Logged Interval (ft): 2,500' **To:** RTD **Total Depth (ft):** 3,400'
Formation: LKC, Arbuckle
Type of Drilling Fluid: Chemical (Andy's)

Region: Kansas
Drilling Completed: 6/24/14

Printed by STRIP.LOG from WellSight Systems 1-800-447-1534 www.WellSight.com

OPERATOR


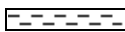

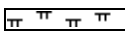
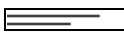
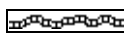




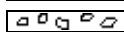


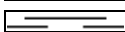


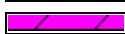

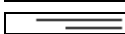

Company: John O. Farmer, Inc.
Address: P.O. Box 352
Russell, KS 67665-0352

Comments

The Johnson D #1 well was drilled by Discovery Drilling Rig #2 (Tool Pusher: Terry Wickham).

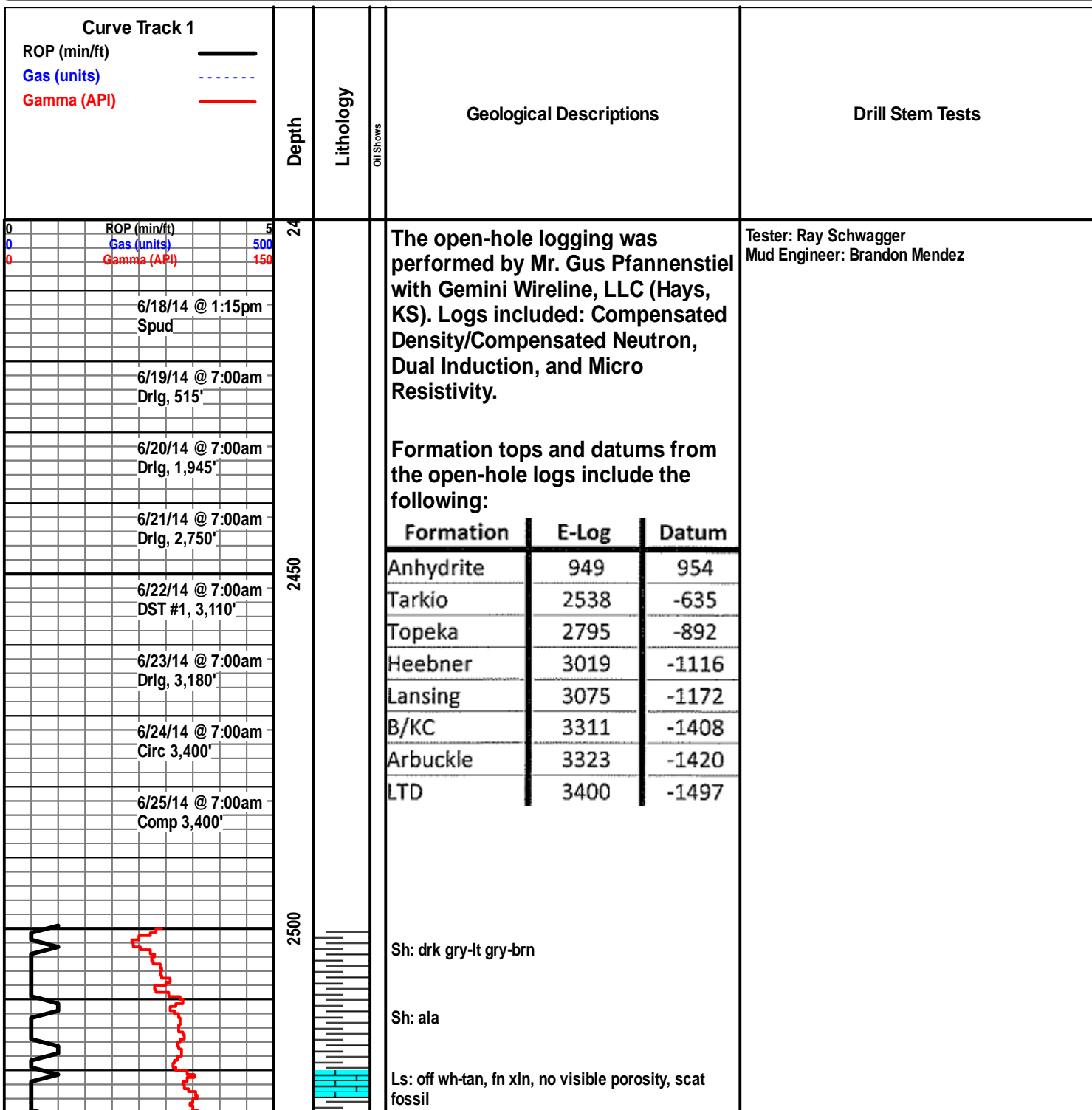
The location for the Johnson D #1 well was found via 3-D seismic survey. Geologic samples were collected and evaluated from 2,500'-3,400'. Structurally, the Johnson D #1 ran 2' low to our correlation well at the Lansing. Three bottom-hole tests were conducted in the Lansing, all yielding negative results. The Arbuckle horizon was 1' high to the Johnson #1 comparison well, 1,500' southeast of our location. Upon completion of the logging operation, a straddle test was conducted, covering the top 16' of the Arbuckle. After all sample, log, and drill stem test data was gathered and evaluated, the decision was made to plug and abandon the Johnson D #1 well on 6/25/14.

ROCK TYPES

 Anhy	 Clyst	 Gyp	 Mrlst	 Shgy
 Bent	 Coal	 Igne	 Salt	 Sltst
 Brec	 Congl	 Lmst	 Shale	 Ss
 Cht	 Dol	 Meta	 Shcol	 Till

OTHER SYMBOLS

POROSITY	<input checked="" type="checkbox"/> Vuggy	ROUNDING	<input checked="" type="checkbox"/> Spotted	EVENT
<input type="checkbox"/> Earthy		<input type="checkbox"/> Rounded	<input type="checkbox"/> Ques	<input type="checkbox"/> Rft
<input type="checkbox"/> Fenest	SORTING	<input type="checkbox"/> Subrnd	<input type="checkbox"/> Dead	<input type="checkbox"/> Sidewall
<input type="checkbox"/> Fracture	<input type="checkbox"/> Well	<input type="checkbox"/> Subang		
<input type="checkbox"/> Inter	<input type="checkbox"/> Moderate	<input type="checkbox"/> Angular	INTERVAL	
<input type="checkbox"/> Moldic	<input type="checkbox"/> Poor		<input type="checkbox"/> Core	
<input type="checkbox"/> Organic		OIL SHOW	<input type="checkbox"/> Dst	
<input type="checkbox"/> Pinpoint		<input checked="" type="checkbox"/> Even		





Sh: drk gry

Tarkio 2538' (-635)

Ls: off wh-tan, fn xln, mostly DNS, scat sh: drk gry, soft

Ss: lt gry, fn-vry fn grn, mostly rnd, well sorted, poorly cemented, scat oil st, NSFO, scat sh: drk gry

Sh: drk gry

Ls: lt gry, fn-sub xln, mostly DNS, no visible porosity, NSFO

Sh: drk gry-lt gry

Ls: tan-brn, fn xln, mostly DNS, scat chalky

Ls: gry, fn xln, mostly DNS, scat fossil, NSFO

Sh: drk gry-brn

Ls: tan-buff, fn xln, no visible porosity

Ls: ala

Sh: lt gry-drk gry

Ls: tan-lt gry, fn-sub xln, no visible porosity, scat fossil, chert-off wh

Ls: buff, fn xln, scat int xln porosity, NSFO, scat fossil

Sh: lt gry-brn

Ls: drk gry-brn, fn xln, scat int part porosity, NSFO, scat chert-off wh

Sh: lt gry-drk gry

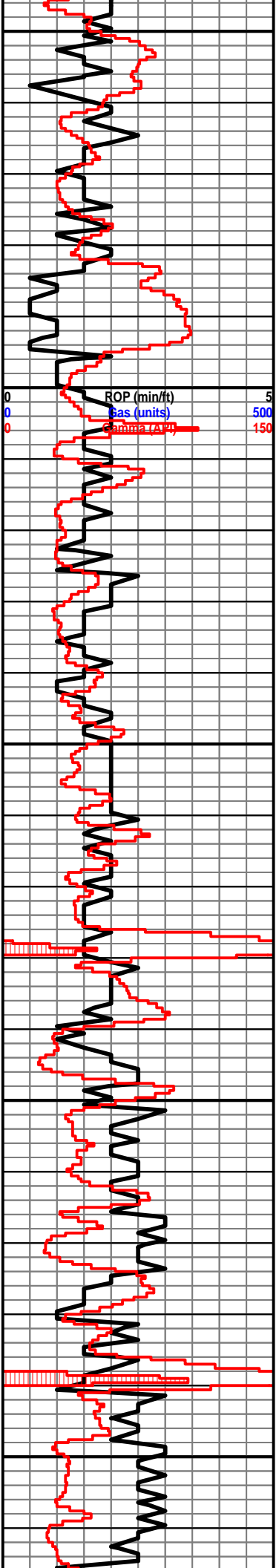
Sh: ala

Ls: tan-brn, fn-sub xln, no visible porosity, NSFO, chalky

Ls: ala

Sh: lt gry-brn-grn

Wt: 8.7
Vis: 50



Ls: buff, fn xln, fossil

Ls: ala

Sh: lt gry-drk gry

Sh: drk gry-brn

Topeka 2795' (-892)

Ls: buff-tan, fn xln, scat fossil, no visible porosity

Sh: drk gry

Sh: ala

Ls: off wh-tan, fn xln, scat int xln porosity, scat oil st, NSFO, no odor, scat fossil

Sh: lt gry-drk gry

Ls: tan-gry, fn xln, scat fossil, poor int part porosity, NSFO

Ls: ala

Sh: drk gry-blk

Sh: lt gry

Ls: tan-gry, fn-sub xln, mostly DNS, NSFO, scat chert-off wh

Sh: drk gry

Ls: tan-lt gry, fn-sub xln, mostly DNS, scat fossil, NSFO

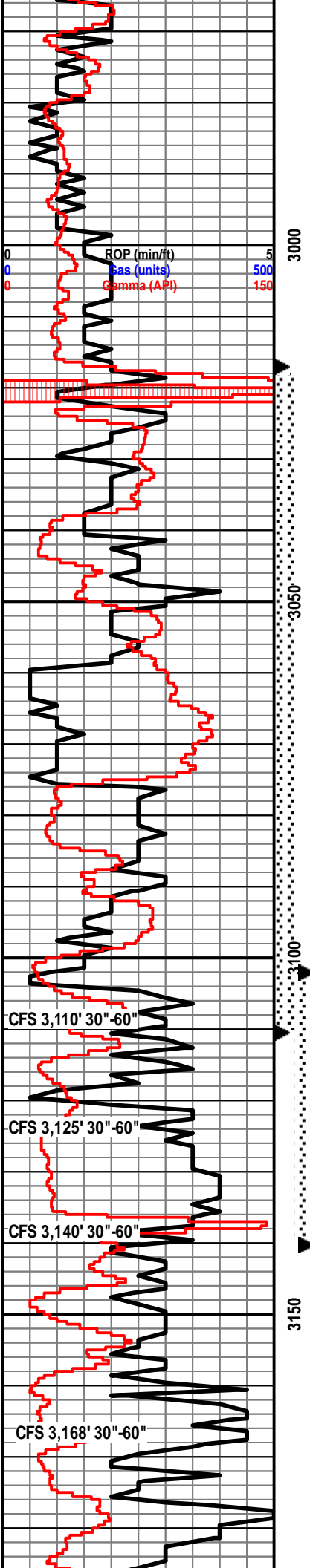
Ls: buff-lt brn, fn xln, scat int part porosity, scat oil st, NSFO, fossil, chert-off wh

Ls: tan-lt gry, fn-sub xln, mostly DNS

Sh: drk gry-blk

Ls: tan-lt gry, fn xln, fossil, scat int part porosity, scat oil st, SSFO, sl odor, scat chalky

Ls: buff-lt gry, fn xln, mostly DNS, no visible porosity, NSFO, scat chert-off wh



Sh: drk gry

Ls: tan-lt gry, fn xln, scat fossil, no visible porosity, NSFO

Ls: off wh-tan, fn xln, poor-fair int xln porosity, fair oil st, SSFO, sl odor, scat chert-off wh

Sh: drk gry-brn

Ls: tan-lt gry, fn-sub xln, mostly DNS

Heebner 3019' (-1116)

Sh: drk gry-blk, carb, fissile

Ls: tan-gry, fn-sub xln, mostly DNS

Sh: drk gry-brn

Toronto 3039' (-1136)

Ls: off wh-tan, fn xln, scat int xln porosity, fair oil st in porosity, SSFO, sl odor, tite

Ls: tan-brn, fn-sub xln, fossil, mostly DNS, NSFO

Sh: drk gry

Sh: drk gry-brn

Sh: ala

Lansing 3075' (-1172')

Ls: off wh, fn xln, scat int xln porosity, scat oil st, NSFO, scat chalk

Ls: ala

Sh: drk gry-brn-grn

Ls: off wh-tan, fn xln, poor-fair int xln porosity, fair oil sat in porosity, SSFO, sl odor, scat chert-off wh

Sh: drk gry-brn-rd

Ls: off wh-tan, fn xln, ool, poor oom porosity, sl-fair oil sat, SSFO, sl odor, chalky

Ls: off wh, fn xln, scat fossil, no visible porosity, NSFO, no odor, scat chert-off wh

Sh: drk gry

Ls: tan-off wh, fn xln, fossil, scat int fossil porosity, no oil st, NSFO

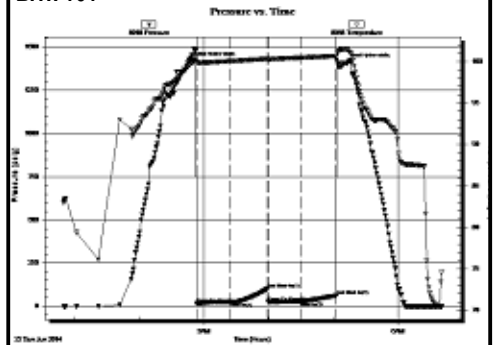
Ls: off wh-tan, fn xln, fossil, poor-fair int xln porosity, vry lt oil st, NSFO, no odor, chalky

Sh: lt gry-drk gry

Ls: off wh-tan, fn xln, fossil, scat fossil and vuggy porosity, NSFO, no odor, chalky, scat chert-off wh

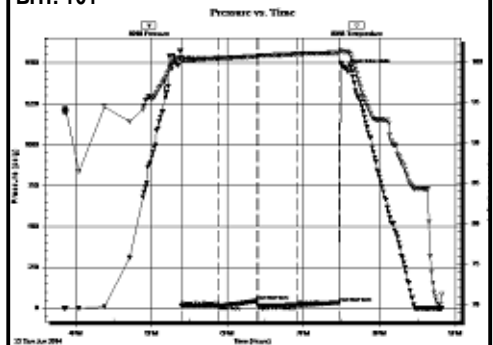
DST #1 3,017-3,110' (Toronto-LKC B)
30"-30"-30"-30"

IF: weak surface blow died in 10 minutes
FF: no blow
Rec: 5' Mud
FP: 17-25, 26-28#
SIP: 103-63#
HP: 1,417-1,408#
BHT: 101

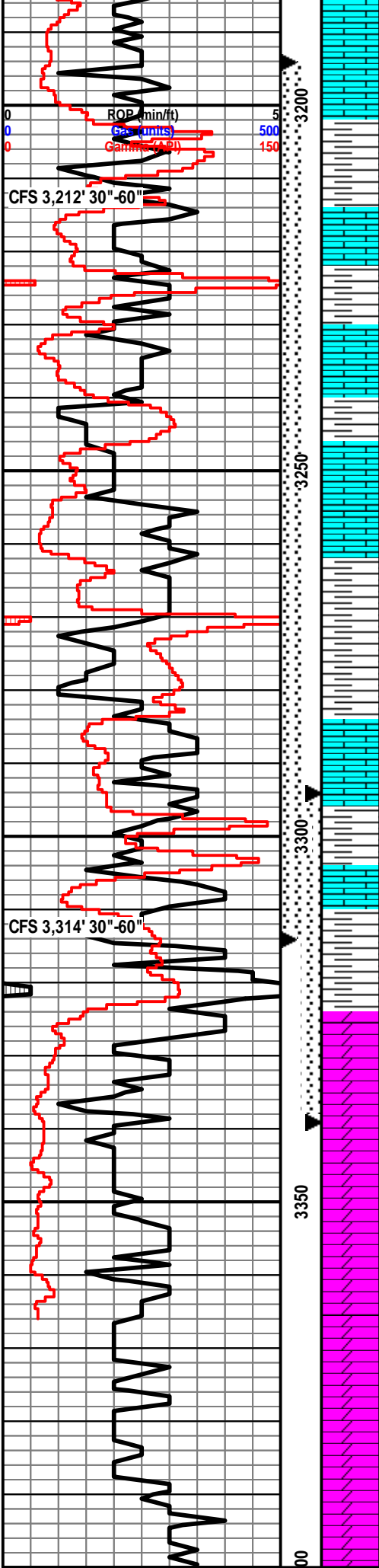


DST #2 3,102-3,140' (LKC C-D)
30"-30"-30"-30"

IF: weak surface blow built to 1/8"
FF: no blow
Rec: 5' Mud
FP: 16-18, 18-20#
SIP: 47-35#
HP: 1,486-1,467#
BHT: 101



Wt: 9.2
Vis: 47



Ls: off wh-tan, fn xln, poor int xln and vuggy porosity, lt oil st, NSFO, no odor, hvy chert-off wh

Sh: drk gry

Ls: tan-lt gry, fn xln, mostly DNS, no visible porosity, hvy chert-off wh, sl chalky, NSFO, no odor

Sh: drk gry-brn-grn

Ls: off wh, fn xln, ool, poor oolitic porosity, sl-fair oil st, SSFO, sl odor, scat fossil, chalky

Ls: off wh-tan, fn xln, scat fossil, poor int xln and ool porosity, fair oil st, SSFO, sl odor, chalky

Sh: drk gry-blk

Sh: drk gry-drk brn-rd

Ls: off wh-tan, fn xln, ool, scat ool porosity, fair oil st in porosity, SSFO, sl odor, chalky

Sh: drk gry

B/KC 3311' (-1408)

Ls: tan-lt gry, fn xln, vry DNS, no visible porosity, scat sh: drk gry

Sh: drk gry-brn-grn

Arbuckle 3327' (-1424)

Dolo: off wh-tan, fn xln, poor sucrosic xln porosity, FSFO, fair odor

Dolo: off wh, fn-md xln, fair sucrosic xln porosity, fair-good oil sat, GSFO, good odor, fair yel fluor

Dolo: off wh-lt brn, fn-md xln, fair int xln porosity, fair oil sat, SSFO, fair-good odor, lt yel fluor

Dolo: off wh, md xln, fair int xln porosity, lt-fair oil sat, SSFO, fair odor

Dolo: ala

Sh: drk gry

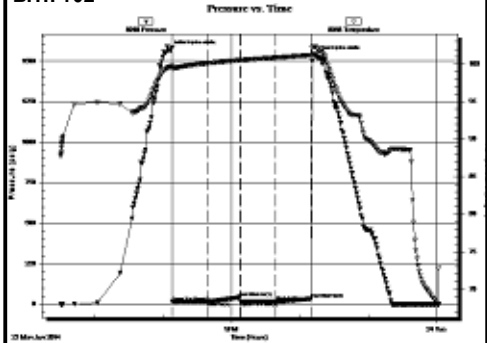
Dolo: off wh-lt brn, md xln, poor int xln porosity, SSFO, sl odor

Dolo: off wh-lt tan, fn-md xln, poor int xln porosity, mostly barren

Wt: 9.1
Vis: 49

DST #3 3,194-3,314' (LKC H-L)
30"-30"-30"-30"

IF: weak surface blow died in 10 minutes
FF: no blow
Rec: 5' Mud
FP: 16-17, 17-18#
SIP: 45-34#
HP: 1,567-1,535#
BHT: 102



DST #4 3,294-3,139' (Top 16' of Arbuckle)
30"-30"-60"-60"

IF: weak blow built to 3.5", no blow back on shut in
FF: weak blow built to 6.5", no blow back on shut in
Rec: 10' MGO (5% G, 30% M, 65% O), 15' G&OCM (5%G, 10%O, 85%M), 62' O&WCM (10%O, 10%W, 80%M), 124' O&WCM (10%O, 30%W, 60%M)
FP: 19-57, 59-109#
SIP: 1,071-1,085#
HP: 1,630-1,573#
BHT: 105

