

OPERATOR

Company: BEREXCO, LLC
Address: 2020 NORTH BRAMBLEWOOD
WICHITA, KS
67206-1094
Contact Geologist: BRUCE MEYER
Contact Phone Nbr: 316-265-3311
Well Name: JOHN #2
Location: NE NW NW S34 T9S R15W
API: 15-141-20465-00-00
Pool:
State: KANSAS

WELL FILE

Field: ROUND MOUND
Country: USA



BEREXCO

Scale 1:240 Imperial

Well Name: JOHN #2
Surface Location: NE NW NW S34 T9S R15W
Bottom Location:
API: 15-141-20465-00-00
License Number: 34318
Spud Date: 5/21/2014
Region: OSBORNE COUNTY
Drilling Completed: 5/30/2014
Surface Coordinates: 330 FNL & 990 FWL
Bottom Hole Coordinates:
Ground Elevation: 1941.00ft
K.B. Elevation: 1948.00ft
Logged Interval: 2850.00ft
Total Depth: 3790.00ft
Formation: LANSING / KANSAS CITY
Drilling Fluid Type: CHEMICAL / FRESH WATER GEL

Time: 9:30 PM

Time: 11:30 PM

To: 3790.00ft

SURFACE CO-ORDINATES

Well Type: Vertical
Longitude: -98.9885387
Latitude: 39.2331706
N/S Co-ord: 330 FNL
E/W Co-ord: 990 FWL

LOGGED BY



Company: SOLUTIONS CONSULTING, INC.
Address: 108 W 35TH
HAYS, KS 67601

Phone Nbr: (785) 639-1337
Logged By: Geologist

Name: STEVE REED / HERB DEINES

CONTRACTOR

Contractor: AMERICAN EAGLE DRILLING
Rig #: 3
Rig Type: MUD ROTARY
Spud Date: 5/21/2014
TD Date: 5/30/2014
Rig Release: 5/31/2014

Time: 9:30 PM
Time: 11:30 PM
Time: 5:00 PM

ELEVATIONS

K.B. Elevation: 1948.00ft
K.B. to Ground: 7.00ft
Ground Elevation: 1941.00ft

NOTES

BASED ON LACK OF SIGNIFICANT OIL SHOWS AND NEGATIVE RESULTS OF DST'S, DECISION WAS MADE TO PLUG AND ABANDON WELL

OPEN HOLE LOGGING PROVIDED BY PIONEER ENERGY SERVICES

ELEVATIONS

K.B. Elevation: 1948.00ft
K.B. to Ground: 7.00ft

Ground Elevation: 1941.00ft

NOTES

BASED ON LACK OF SIGNIFICANT OIL SHOWS AND NEGATIVE RESULTS OF DST'S, DECISION WAS MADE TO PLUG AND ABANDON WELL

OPEN HOLE LOGGING PROVIDED BY PIONEER ENERGY SERVICES:

DUAL INDUCTION LOG, DUAL COMPENSATED POROSITY LOG, AND MICRORESISTIVITY LOGS WERE PERFORMED

DRILL STEM TESTING PROVIDED BY: TRILOBITE TESTING, INC:

THREE (3) CONVENTIONAL DRILL STEM TESTS COMPLETED

Image Header 01

	WELL NAME		COMPARISON WELL	COMPARISON WELL
	JOHN #2		WARD # 1	WINDER #1
	API: 15-141-20465		API: 15-141-20005	API: 15-141-20413
FORMATION	SAMPLE TOPS	LOG TOPS	LOG TOPS (DATUM)	LOG TOPS (DATUM)
ANHYDRITE TOP	1172' (+776')	1167' (+781')	+778'	+780'
ANHYDRITE BASE	1203' (+745')	1200' (+748')	+744'	-746'
35' TOPEKA	2902' (-954')	2902' (-954')	-978'	-952'
HEEBNER	3102' (-1154')	3106' (-1158')	-1187'	-1157'
LKC "A"	3157' (-1209')	3157' (-1209')	-1240'	-1207'
LKC "B"	3186' (-1238')	3186' (-1238')	-1269'	-1234'
LKC "C"	3207' (-1259')	3204' (-1256')	-1289'	-1253'
LKC "G"	3265' (-1317')	3258' (-1310')	-1343'	-1309'
LKC "H"	3300' (-1352')	3298' (-1350')	-1377'	-1348'
LKC "I"	3321' (-1373')	3321' (-1373')	-1402'	-1372'
LKC "J"	3341' (-1393')	3340' (-1392')	-1421'	-1389'
LKC "K"	3380' (-1432')	3376' (-1428')	-1457'	-1427'
LKC "L"	3408' (-1460')	3404' (-1456')	NA	-1453'
CHEROKEE CONGL	3539' (-1591')	3542' (-1594')	-1633'	-1584'
VIOLA	NO CALL	3615' (-1667')	NA	-1644'
ARBUCKLE	NO CALL	3694' (-1746')	NA	-1754'
RTD	3790' (-1842')	3790' (-1842')	NA	-1842'






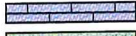






SUMMARY OF DAILY ACTIVITY

- 5-21-14 R.U., spud @ 9:30pm, drilling 308'
- 5-22-14 308', 8.5/8" surface casing set at 306.89 w/175 sxs common, 2% gel, 3%cc, WOC
- 5-23-14 1250', drilling
- 5-24-14 2335', drilling, bit trip 2650, survey 3/4", strap .86 short to board
- 5-25-14 2840', drilling, CFS @ 3200, short trip, CTCH, TOWB for DST #1
- 5-26-14 3200', TIHWT, DST #1 3138 to 3200, drilling, CFS @ 3215, CFS @ 3262, CFS @ 3285, CTCH, TOWB for DST #2
- 5-27-14 3285', DST #2 3200 to 3285, drilling, CFS @ 3341, CFS @ 3363, CTCH, mud treatments, TOWB for DST #3, DST #3 3285 to 3363
- 5-28-14 3392', drilling, CFS @ 3495, CFS @ 3567, 3697 stuck in hole, fishing for collar
- 5-29-14 3697', mud treatments, spot oil, work on draw works, continue to work stuck pipe
- 5-30-14 3697', broke loose about 8:00am, TOWB, check string and bit, TIWB, CTCH and get mud back in shape, commence drilling, TD 3790 @ 11:30PM, CTCH, TOWB FOR LOGS, LOGGING
- 5-31-14 lay down pipe, prepare for plugging, cement, release rig

Image Header 02

Image Header 05

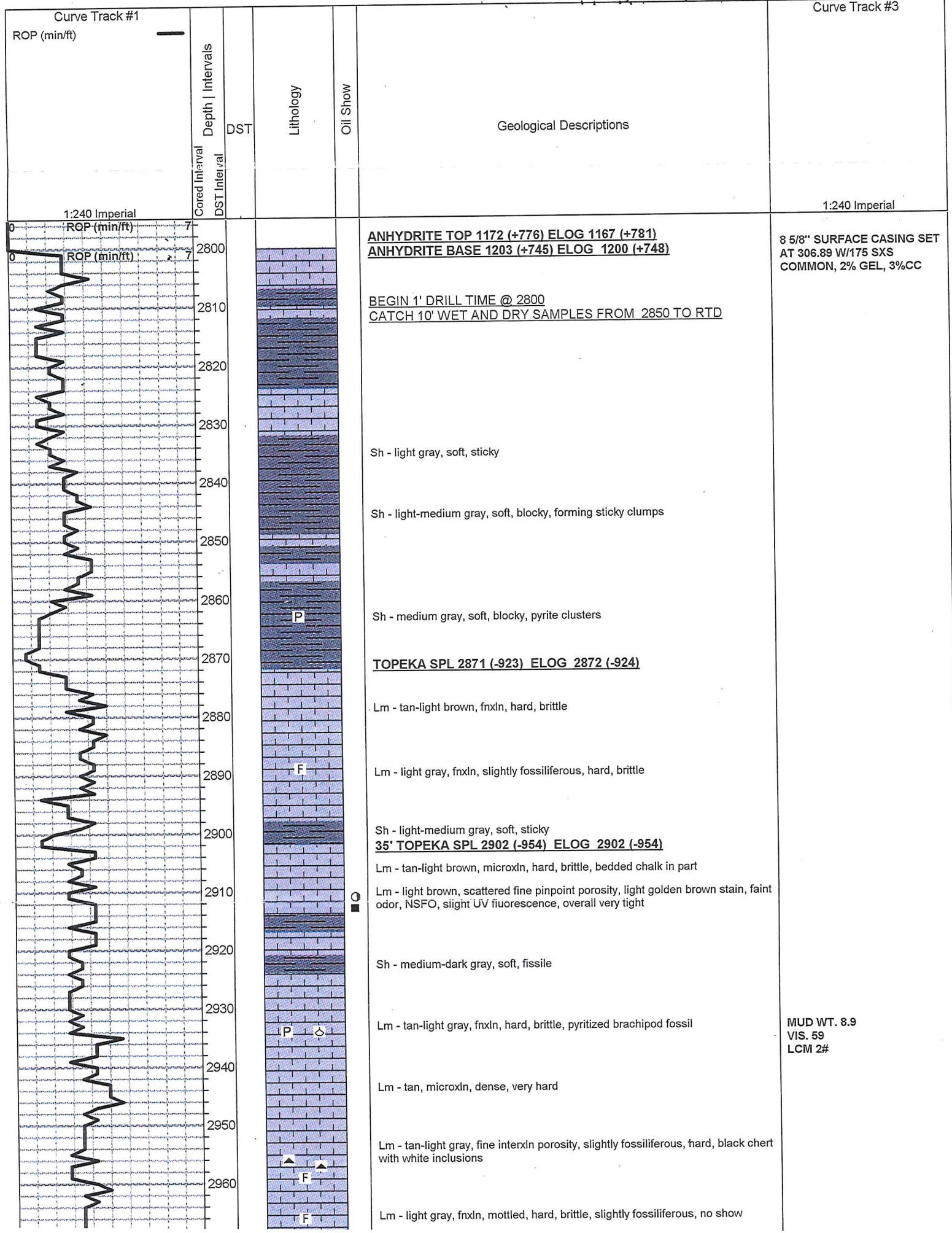
ROCK TYPES

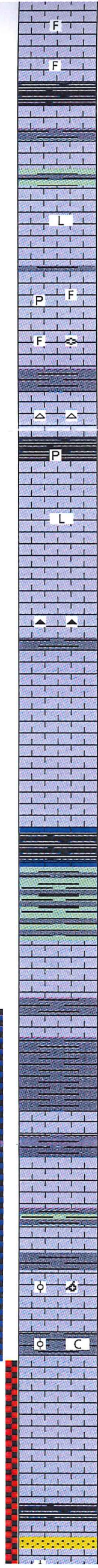
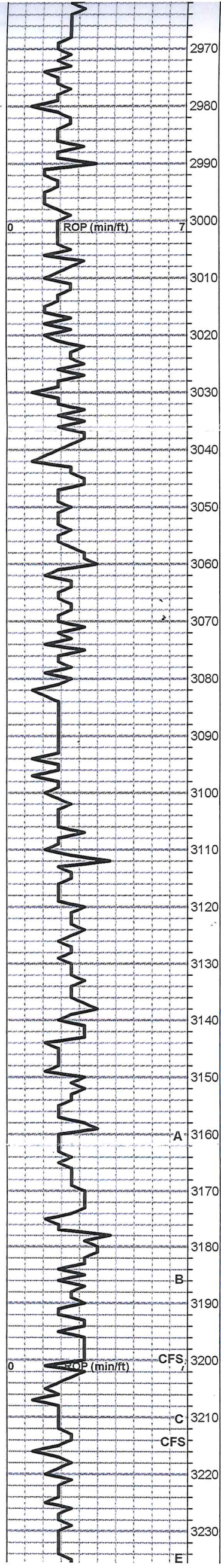
 Congl	 Lmst fw<7	 shale, gry	 Shcol
 Chtcong	 Lmst fw>7	 Carbon Sh	 Ss
 Dolprim	 shale, grn	 shale, red	 Sltst

ACCESSORIES

MINERAL	FOSSIL	STRINGER	TEXTURE
▲ Chert, dark	◇ Brachiopod	~ Chert	C Chalky
P Pyrite	F Fossils < 20%	▬ Shale	L Lithogr
△ Chert White	○ Oolite	■ red shale	
▨ Euhed rhombs of dol or	⊕ Oomoldic		
	⊕ Fossilinid		

Printed by GEOstrip VC Striplog version 4.0.8.9 (www.grsi.ca)





Lm - light gray, fnxn, mottled, hard, brittle, slightly fossiliferous, no show

Lm - tan-light gray containing black fossil clasts in fnxn matrix, hard, low to no porosity

Sh - black carbonaceous, waxy

Sh - light gray, soft, sticky

Sh - greenish gray, soft, sticky

Lm - cream-tan, vfxn to lithographic, dense, hard, limited porosity

Lm - cream-light gray, vf-fnxn, dense, hard, brittle, slightly fossiliferous, pyrite

Lm - cream, vfxn, slightly fossiliferous, moderately hard, bedded chalk and fusulinids in part

Lm - medium brown, fnxn, dense, hard, white chert

Sh - black carbonaceous, copper specks, waxy, soft, pyrite

Lm - cream, fnxn to lithographic, dense, brittle, limited porosity, clean and barren

Lm - cream, fossiliferous, limited fine interxn porosity, light brown scattered stain, questionable odor, NSFO, UV fluorescence in some,

Lm - cream-light gray, fnxn, hard, brittle, gray chert

Lm - cream, fnxn to granular, slight gilsonitic stain, NSFO, no odor

Lm - cream, limited fine pinpoint porosity, scattered medium brown to black tar like stain, NSFO, no odor, no fluorescence

Lm - cream, granular, dark brown organic residue, NSFO, no odor

HEEBNER SPL 3102 (-1154) ELOG 3106 (-1158)

Sh - black, carbonaceous, waxy, firm, fissile

Sh - greenish gray, soft, sticky

TORONTO SPL 3129 (-1181) ELOG 3127 (-1179)

Lm - bright white, fnxn, some scattered pinpoint porosity, scattered light golden brown stain, faint odor, streaming wet cut under UV light, NSFO

Sh - light gray, soft blocky

Sh - medium-dark gray, firm, blocky, forming sticky clumps

LKC "A" SPL 3157 (-1209) ELOG 3157 (-1209)

Lm - offwhite-tan, vfxn, dense, hard, low porosity, no shows

Sh - greenish gray, firm, blocky

LKC "B" SPL 3186 (-1238) ELOG 3186 (-1238)

Lm - tan, oolitic / oomoldic, fine pinpoint porosity with scattered vugs, light golden brown stain, faint odor, good streaming wet cut under UV light, SFO upon crush, friable

Lm - tan-offwhite, oolitic, limited development, slight scattered light brown stain, NSFO, no odor, chalky in part

LKC "C" SPL 3207 (-1259) ELOG 3204 (-1256)

Lm - cream, fnxn, hard, some chips with scattered pinpoint porosity and light brown stain, SFO upon crush, faint odor, limited porosity overall, slight UV fluorescence

Lm - buff-tan, vf-microxn, dense, hard, brittle

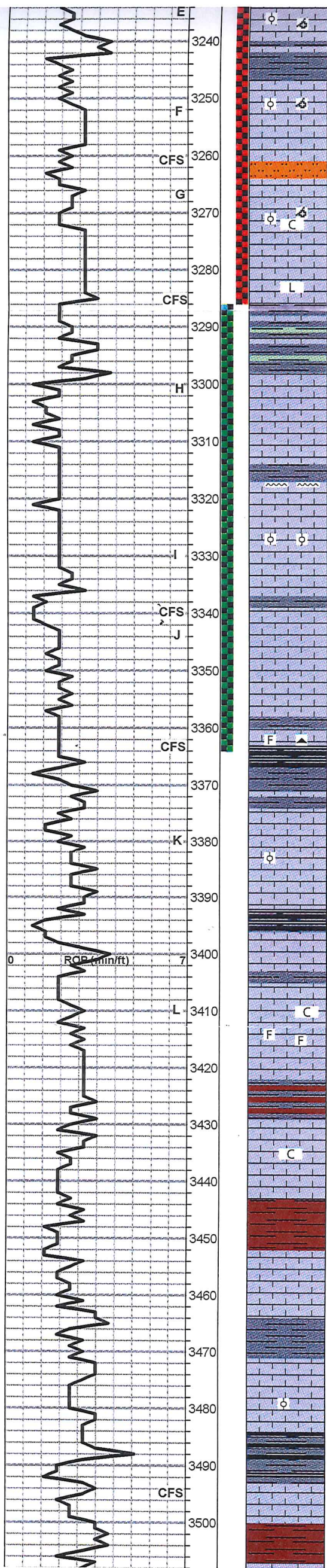
Sh - black, carbonaceous, waxy, firm

Lm - cream, mostly fnxn, some finely oolitic / oomoldic, scattered light brown

DST #1 3138 TO 3200
SEE HEADER FOR TEST SUMMARY

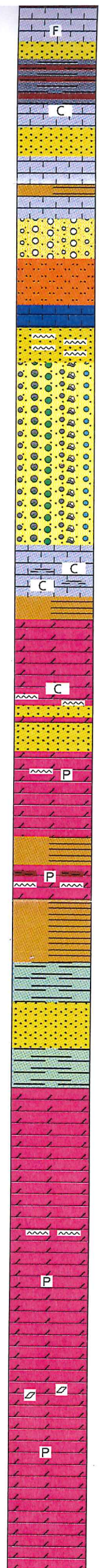
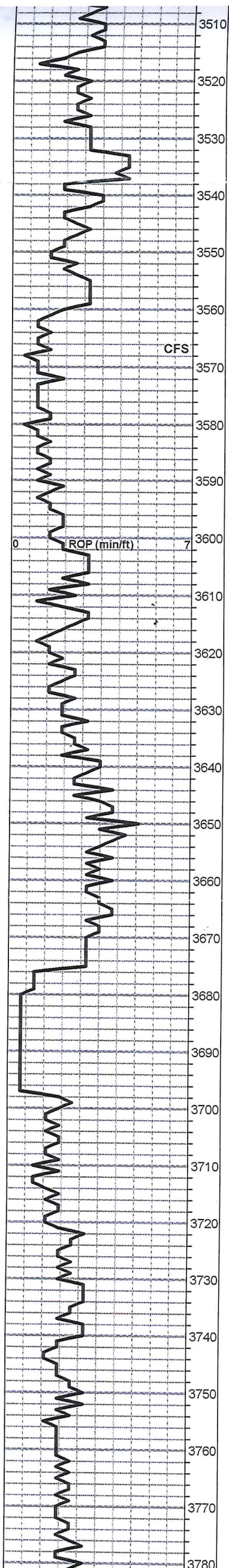
DST #2 3200 TO 3285
SEE HEADER FOR TEST SUMMARY

MUD WT. 9.4
VIS. 48
LCM 2#



Lm - cream, mostly fnxn, some finely oolitic / oomoldic, scattered light brown stain, streaming wet cut under UV light, faint odor, NSFO
 Sh - light-medium gray, soft, blocky
 Lm - buff, oolitic / oomoldic, scattered vuggy porosity, slight scattered light brown stain, SFO upon crush, streaming wet cut under UV light, tight
LKC "G" SPL 3265(-1317) ELOG 3258 (-1310)
 Sh/Siltstone - light-medium gray, earthy, silty, firm, blocky
 Lm - cream-buff, oolitic / oomoldic, friable, sucrosic upon crush, clean and barren, chalky in part
 Lm - cream, microxln, dense, hard, clean and barren
 Lm - cream-tan, microxln to lithographic, dense, very hard
 Sh - greenish gray-brown, earthy, gritty, soft, crumbly
LKC "H" SPL 3300(-1352) ELOG 3298 (-1350)
 Lm - light gray-tan, fnxn, hard, brittle, bedded chalk in part
 Lm - cream-light brown, microxln, dense, very hard, cherty
LKC "I" SPL 3321(-1373) ELOG 3321 (-1373)
 Lm - cream, oolitic with fine interxln porosity, slight scattered light brown stain, some droplets of free oil upon crush, tight overall, faint odor
LKC "J" SPL 3341 (-1393) ELOG 3340 (-1392)
 Lm - light brown, vfxln with scattered pinpoint porosity, slight scattered staining, NSFO, faint odor, no fluorescence
 Lm - cream-light brown, fnxn, dense, hard, some chips with scattered vuggy porosity, slight scattered stain, NSFO, no odor
 Lm - tan, vfxln, dense, hard, fossiliferous brown chert
 Sh - black, carbonaceous, waxy, firm
 Sh - light-medium gray, soft, blocky
LKC "K" SPL 3380 (-1432) ELOG 3376 (-1428)
 Lm - cream, suboolitic, granular, moderate hardness, NSFO, no odor
 Sh - black, carbonaceous, waxy, firm
LKC "L" SPL 3408 (-1460) ELOG 3404 (-1456)
 Lm - buff, fn-medxln, chalky in part, slightly fossiliferous, clean and barren
 Lm - light gray, fossiliferous, fine interxln porosity, dense, hard
BKC SPL 3426 (-1478) ELOG 3421 (-1473)
 Sh - medium gray to maroon, soft, blocky, some very sticky
 Lm - buff, medxln to granular, , chalky in part, moderate hardness
 Sh - maroon, soft, gritty, forming sticky clumps
 Lm - buff-cream, fnxn, dense, very hard, no show
MARMATON "B" SPL 3471 (-1523) ELOG 3470 (-1522)
 Lm - buff, fnxn, hard, brittle
 Lm - buff, oolitic, poorly developed, dense, hard, clean and barren
 Sh - dark gray to black carbonaceous, waxy
 Lm - buff, fnxn, dense, very hard
 Sh - maroon, soft, extremely sticky

DST #3 3285 TO 3363
 SEE HEADER FOR TEST
 SUMMARY



Lm - cream-light brown, slightly fossiliferous, moderate hardness, no show

Sh - maroon/gray, soft, blocky

Lm - cream, microfn, dense, hard, chalky in part

Lm - cream, oolitic, poorly developed, dense, hard, various colored interbedded chales

CHEROKEE CONG. SPL 3539 (-1591) ELOG 3542 (-1594)

Cong - various Lm's hard with abundance of yellow, orange, tan, white cherts, various colored shales

Siltstone - dark red, very well cemented, calcite cement, subangular quartz grains, very hard

Ss - cream-pink, very fine grained, well sorted, well rounded, finely cemented with various colored shales and cherts

Cong - Lm's various colors, mostly fnxln, Cherts yellow, orange, white, tan, gray, Shales, yellow, orange, gray, pinks, purples

Cong - A/A with abundance of various colored cherts, interbedded shales

Cong - A/A

Lm - offwhite, vfxln, dense, very hard, chalky with interbedded shales

VIOLA ELOG 3615 (-1667)

Dolo - medium brown, vfxln, dense, hard, brittle, no shows

Dolo - cream, sandy, well cemented, hard, chalk in part, abundance of various colored cherts and shales, no shows

Ss - light brown, fine grained, well sorted, angular, sucrosic upon crush, only a few clusters

Dolo - buff, sandy, fnxln matrix, dense very hard, cherty as above, pyrite

Sh - various colors, soft, blocky

Dolo - cream with yellow tint, fnxln, limey, dense, hard, chety with reddish brown soft blocky shale interbeds, pyrite

Sh - lime green, soft, waxy

Ss - white clean clear, very fine quartz grains, well sorted, well rounded, moderate cementation, calcite cement, friable, some loose unconsolidated grains, NSFO, no odor, no fluorescence or wet cut.

ARBUCKLE ELOG 3694 (-1746)

Dolo - light brown, fnxln, slight interxn porosity, hard

Dolo - tan, vfxln, hard, brittle, no shows, no odor

Dolo - cream-tan, fnxln, clean and barren, cherty

Dolo - cream, fnxln, some with scattered pinpoint porosity, no stain, no odor, pyrite

Dolo - cream-tan, fnxln, scattered interxn porosity, clean and barren, hard

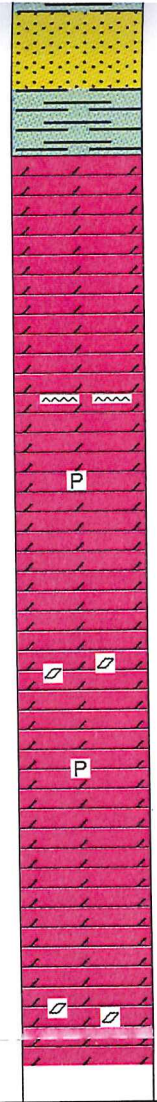
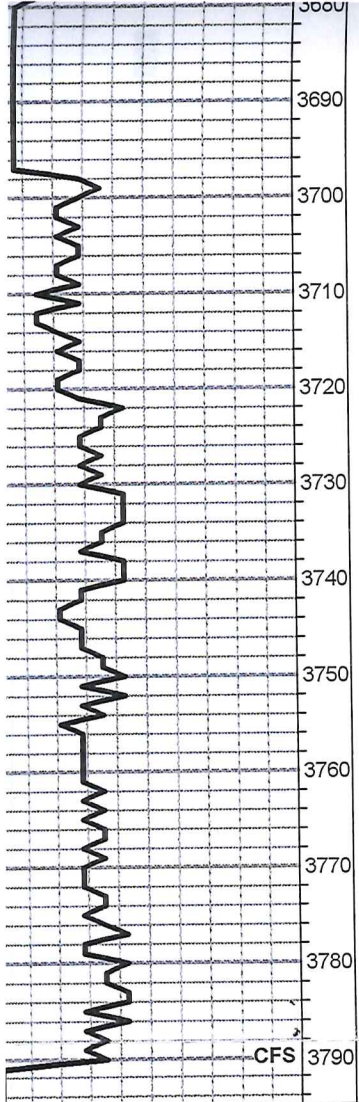
Dolo - tan, fnxln, well developed rhombi crystals

Dolo - light brown to pink, fnxln, moderately hard, pyrite

Dolo - tan, fnxln, slight scattered vuggy porosity, clean and barren

Dolo - cream, medxn, scattered vuggy porosity, dense, brittle, no shows

LOST PUMP PRESSURE;
UNSCREWED COLLAR;
FISHING; STUCK IN HOLE



Ss - white clean clear, very fine quartz grains, well sorted, well rounded, moderate cementation, calcite cement, friable, some loose unconsolidated grains, NSFO, no odor, no fluorescence or wet cut.

ARBUCKLE ELOG 3694 (-1746)

- Dolo - light brown, fnxln, slight interxn porosity, hard
- Dolo - tan, vfxln, hard, brittle, no shows, no odor
- Dolo - cream-tan, fnxln, clean and barren, cherty
- Dolo - cream, fnxln, some with scattered pinpoint porosity, no stain, no odor, pyrite
- Dolo - cream-tan, fnxln, scattered interxn porosity, clean and barren, hard
- Dolo - tan, fnxln, well developed rhombi crystals
- Dolo - light brown to pink, fnxln, moderately hard, pyrite
- Dolo - tan, fnxln, slight scattered vuggy porosity, clean and barren
- Dolo - cream, medxln, scattered vuggy porosity, dense, brittle, no shows
- Dolo - cream-tan, medxln, well developed rhombic crystals, hard, brittle

RTD 3790 (-1842) LTD 3790 (-1842)

LOST PUMP PRESSURE;
UNSCREWED COLLAR;
FISHING; STUCK IN HOLE