

ADVANTAGE ELEVATIONS

OIL FIELD SURVEYORS

BOX 8604 - PRATT, KS 67124
(620) 672-6491

725142

INVOICE NO.

VAL ENERGY INC

OPERATOR

V2-5

NO.

HAMMER D

FARM

Cowley

COUNTY

5

S

33s

T

6e

R

410' FSL & 1650' FEL of Sec

LOCATION

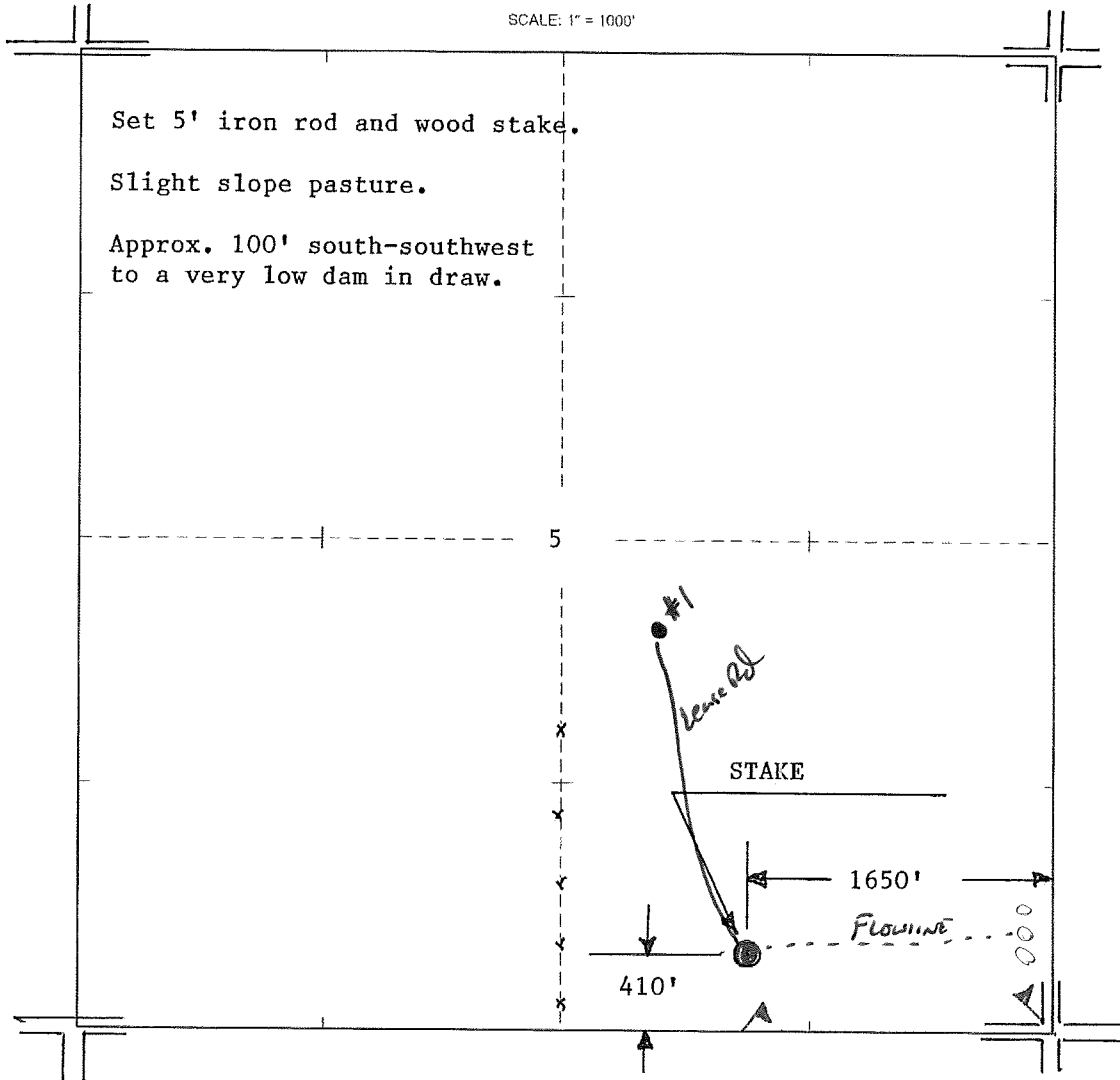
ELEVATION: 1327' GR

VAL ENERGY INC
125 N Market Ste 1710
Wichita, KS 67202



AUTHORIZED BY: Todd Allam

SCALE: 1" = 1000'



DATE STAKED: 8/13/14