



OIL FIELD SURVEYORS

BOX 8604 - PRATT, KS 67124  
(620) 672-6491

725143

INVOICE NO.

VAL ENERGY INC

OPERATOR

8 A

NO.

GOLDMAN MELCHER

FARM

Barber

COUNTY

32

S

34s

T

11w

R

760' FSL & 3250' FEL of Sec.

LOCATION

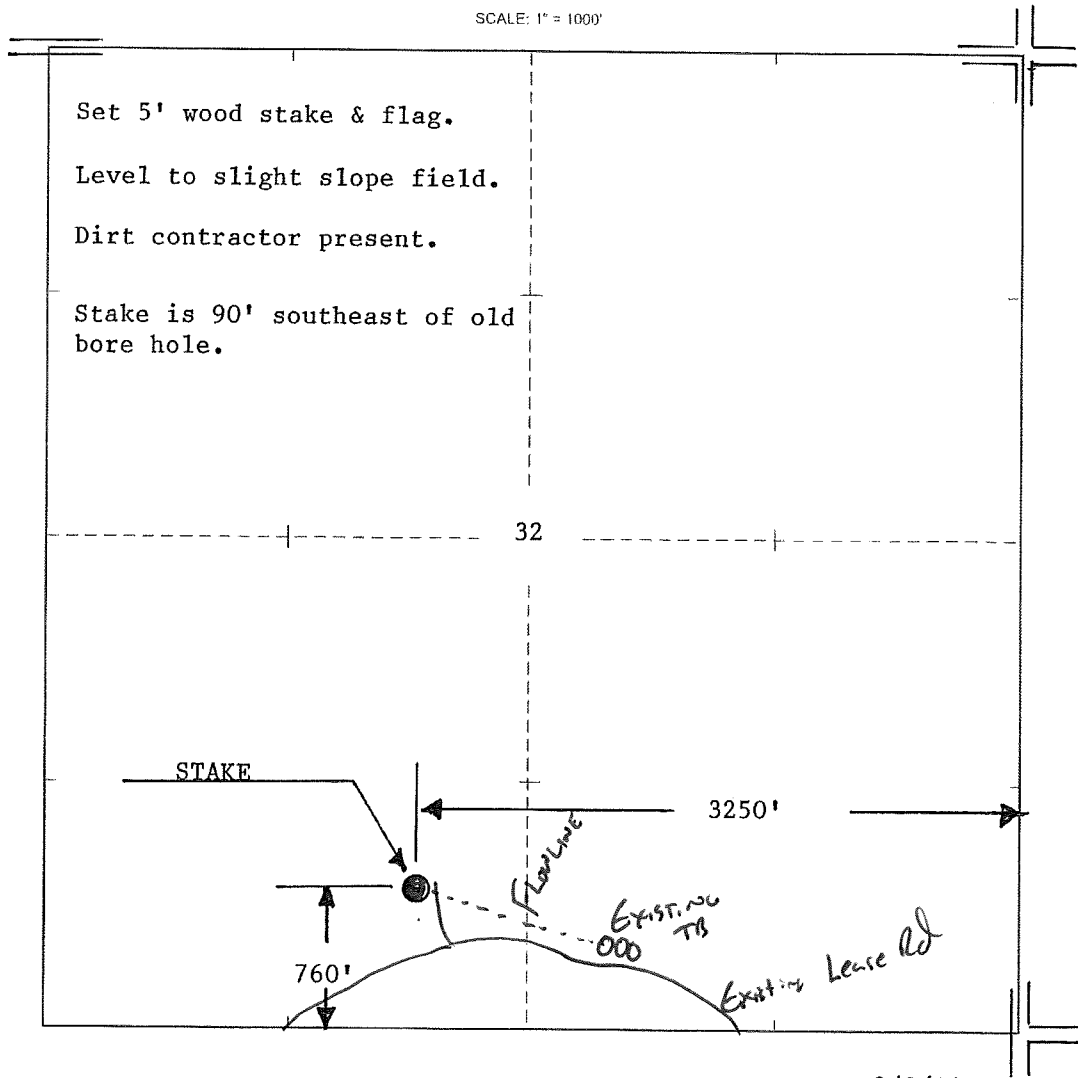
ELEVATION: 1344' GR



VAL ENERGY INC  
125 N Market Ste 1710  
Wichita, KS 67202

AUTHORIZED BY: Todd Allam

SCALE: 1" = 1000'



DATE STAKED: 8/8/14