



**TRILOBITE
TESTING, INC**

DRILL STEM TEST REPORT

Shakespeare Oil Company, Inc

14-14s-32w Logan Co, KS

202 W Main ST
Salem IL, 62881 - 1519

Ottley #6-14

Job Ticket: 57034

DST#: 5

ATTN: Tim Priest

Test Start: 2014.07.14 @ 00:15:00

GENERAL INFORMATION:

Formation: **Marmaton - Pawnee**

Deviated: No Whipstock: 42.00 ft (KB)

Time Tool Opened: 03:24:30

Time Test Ended: 08:40:16

Test Type: Conventional Bottom Hole (Reset)

Tester: Jace McKinney

Unit No: 75

Interval: 4240.00 ft (KB) To 4295.00 ft (KB) (TVD)

Reference Elevations: 2818.00 ft (KB)

Total Depth: 4295.00 ft (KB) (TVD)

2808.00 ft (CF)

Hole Diameter: 7.88 inches Hole Condition: Poor

KB to GR/CF: 10.00 ft

Serial #: 8675

Inside

Press@RunDepth: 193.86 psig @ 4241.00 ft (KB)

Capacity: 8000.00 psig

Start Date: 2014.07.14

End Date:

2014.07.14

Last Calib.: 2014.07.14

Start Time: 00:15:15

End Time:

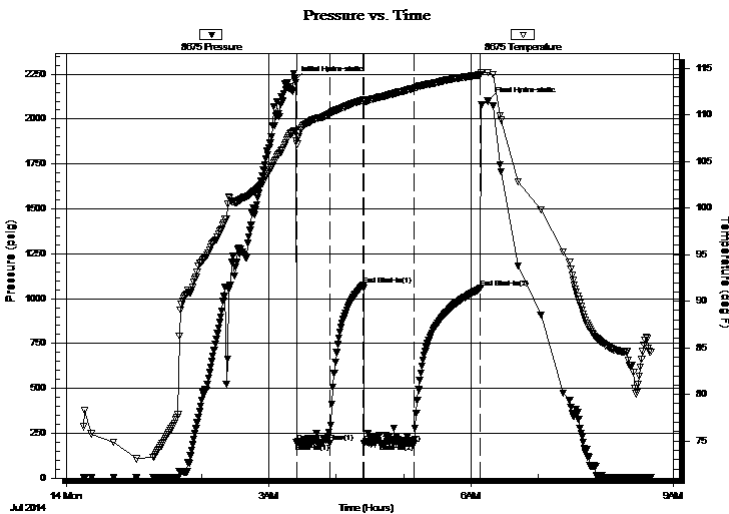
08:40:16

Time On Btm: 2014.07.14 @ 03:23:00

Time Off Btm: 2014.07.14 @ 06:14:53

TEST COMMENT: Built to 1" blow
No return blow
Weak surface, died in 25 min
No return blow

PRESSURE SUMMARY



Time (Min.)	Pressure (psig)	Temp (deg F)	Annotation
0	2215.37	108.31	Initial Hydro-static
2	197.66	107.21	Open To Flow (1)
31	193.97	110.12	Shut-In(1)
61	1074.22	111.58	End Shut-In(1)
62	194.59	111.38	Open To Flow (2)
106	193.86	112.85	Shut-In(2)
166	1057.71	114.32	End Shut-In(2)
172	2099.54	114.57	Final Hydro-static

Recovery

Length (ft)	Description	Volume (bbl)
300.00	Thick Heavy Mud 100%	3.78

* Recovery from multiple tests

Gas Rates

	Choke (inches)	Pressure (psig)	Gas Rate (Mcf/d)



**TRILOBITE
TESTING, INC**

DRILL STEM TEST REPORT

FLUID SUMMARY

Shakespeare Oil Company, Inc

14-14s-32w Logan Co, KS

202 W Main ST
Salem IL, 62881 - 1519

Ottley #6-14

Job Ticket: 57034

DST#: 5

ATTN: Tim Priest

Test Start: 2014.07.14 @ 00:15:00

Mud and Cushion Information

Mud Type: Gel Chem

Cushion Type:

Oil API:

deg API

Mud Weight: 9.00 lb/gal

Cushion Length:

ft

Water Salinity:

ppm

Viscosity: 54.00 sec/qt

Cushion Volume:

bbbl

Water Loss: 9.19 in³

Gas Cushion Type:

Resistivity: ohm.m

Gas Cushion Pressure:

psig

Salinity: 4000.00 ppm

Filter Cake: 1.00 inches

Recovery Information

Recovery Table

Length ft	Description	Volume bbl
300.00	Thick Heavy Mud 100%	3.779

Total Length: 300.00 ft Total Volume: 3.779 bbl

Num Fluid Samples: 0

Num Gas Bombs: 0

Serial #:

Laboratory Name:

Laboratory Location:

Recovery Comments:

