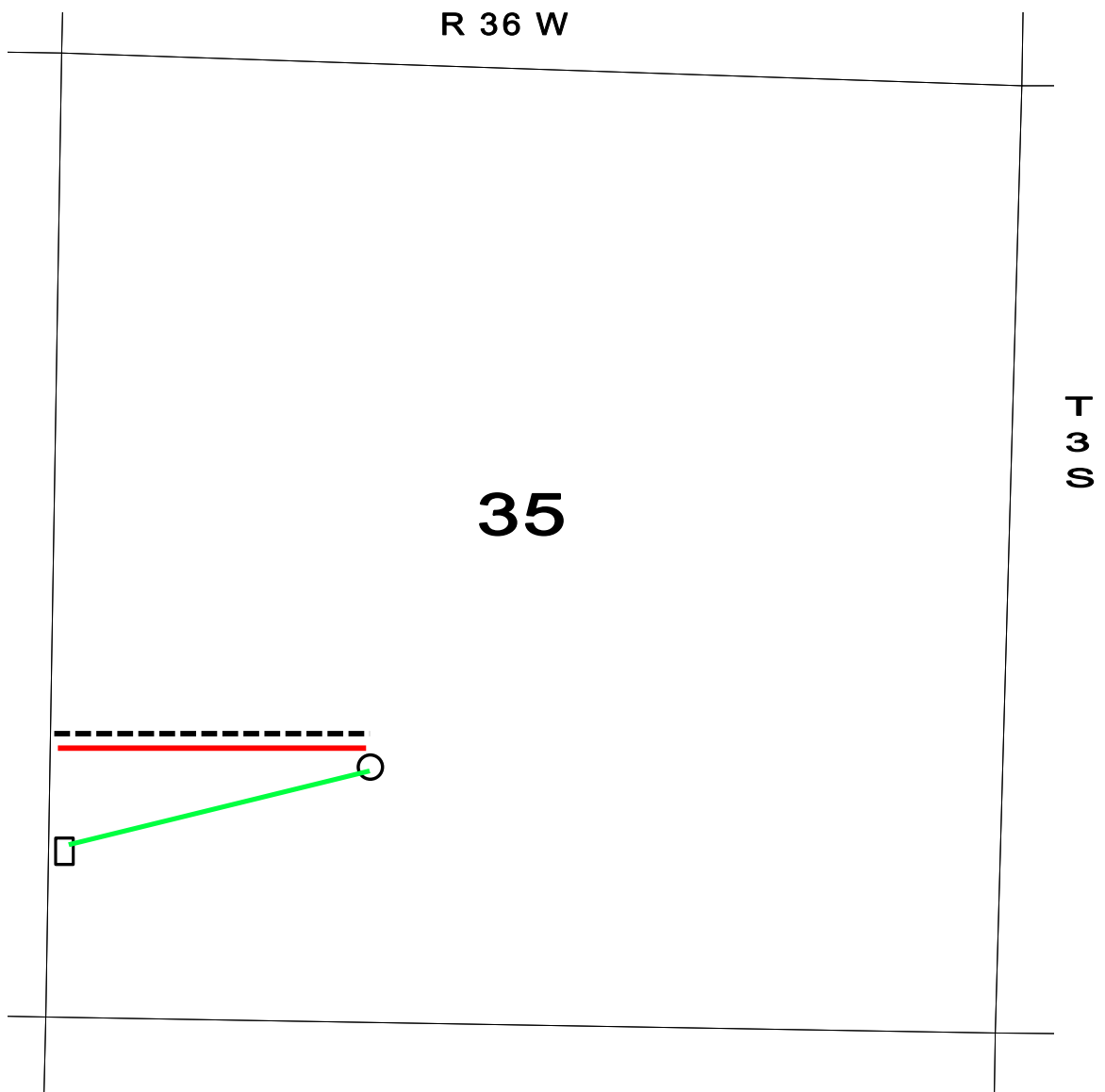


OPERATOR: Samuel Gary Jr. & Associates, Inc. 1515 Wynkoop Street, Suite 700
Denver, Colorado 80202 office: 303-831-4673 ; fax: 303-863-7285

WELL NAME: FISHER CATTLE CO 2-35

LOCATION: 1430 FSL / 1900 FWL Sec. 35-3S-36W RAWLINS COUNTY

SURFACE OWNERS: A.B. Fisher, President
Fisher Cattle Company
15360 Road 3
McDonald, KS 67745



- PROPOSED WELL LOCATION
- ESTIMATED LOCATION OF TANK BATTERY

- ESTIMATED LEASE ROAD
- ESTIMATED LOCATION OF FLOWLINES
- ESTIMATED LOCATION OF ELECTRICAL LINES