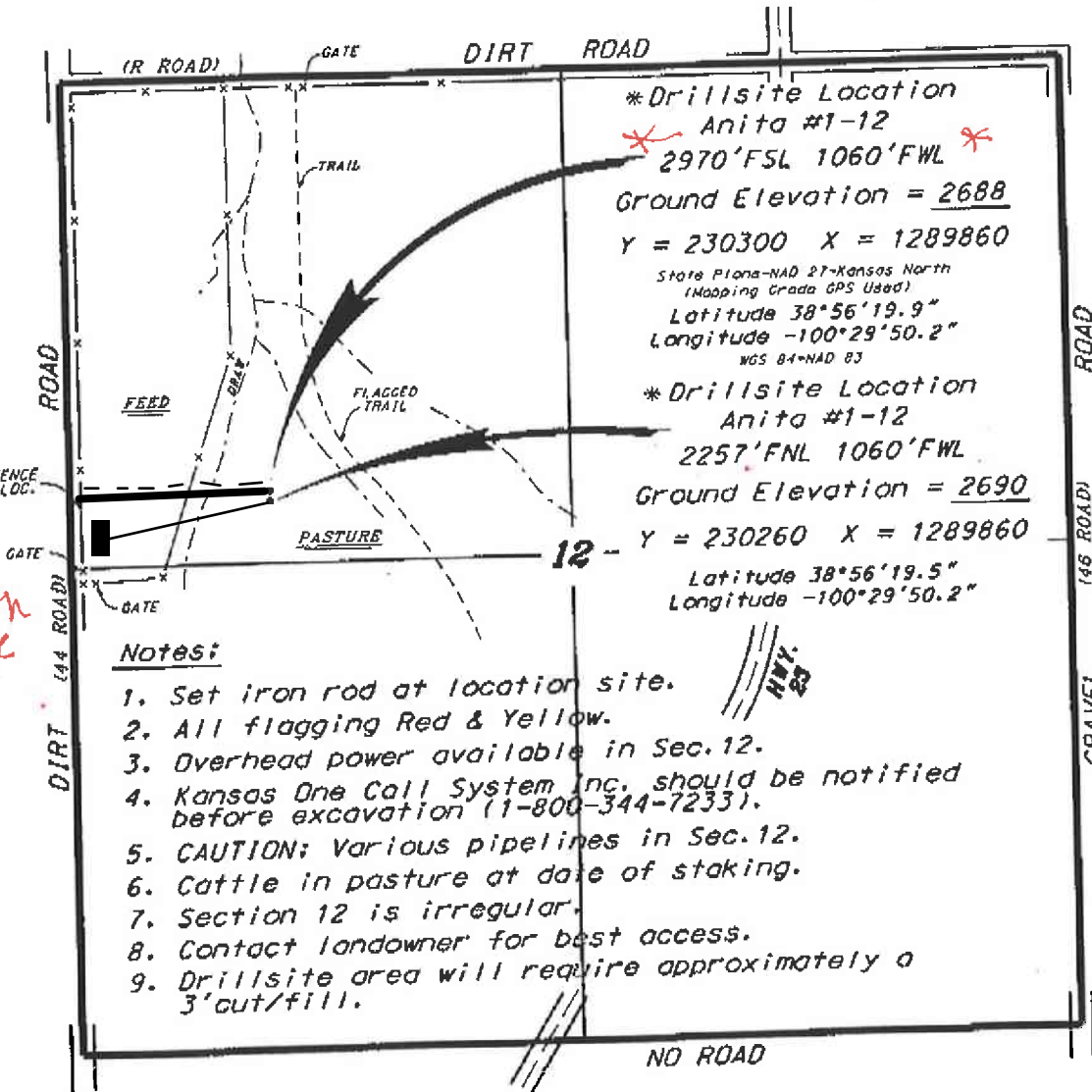


L.D. DRILLING, INC.
ANITA LEASE
NW. 1/4, SECTION 12, T13S, R29W
GOVE COUNTY, KANSAS

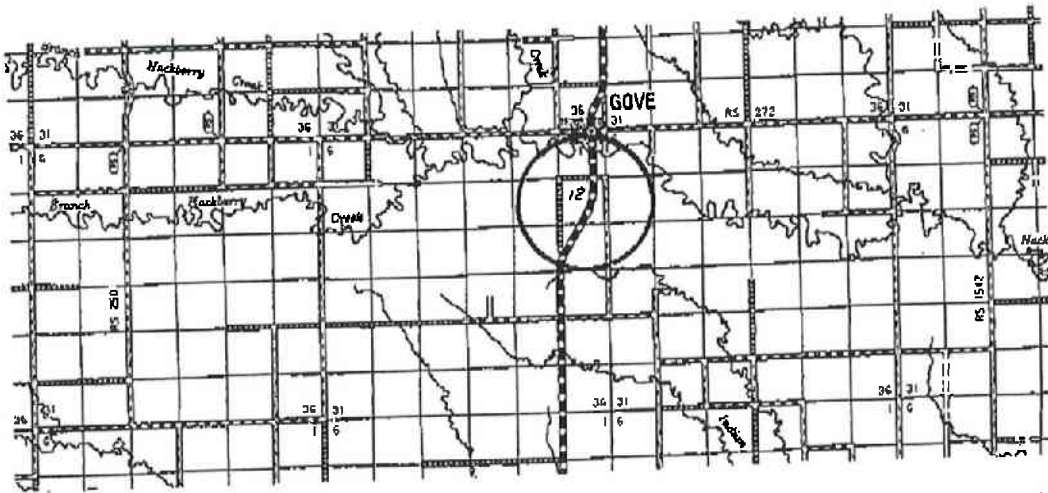
Directions:

From the intersection of Highway 23 and a E-W county road in Gove, Kansas go 1.0 miles South on Highway 23, then go 0.49 miles West, then go 0.42 miles South to location.



* Ingress and egress to location as shown on this plot is per usage only and may not be legally opened for public use. Contact landowner, tenant and county road department for access.

North Stake



Ken S. 8-18-14

* Controlling data is based upon the best maps and photographs available to us and upon a regular section of land containing 660 acres.

* Approximate section lines were determined using the normal standard of care of oilfield surveyors practicing in the state of Kansas. The section corners, which establish the precise section lines, were not necessarily located, and the exact location of the drillsite location in the section is not guaranteed. Therefore, the operator accepting this service and accepting this plot and all other parties relying thereon agree to hold Central Kansas Oilfield Services, Inc., its officers and employees harmless from all losses, costs and expenses and said parties released from any liability from incidental or consequential damages.

* Elevations derived from National Geodetic Vertical Datum.

August 14, 2014