



**TRILOBITE
TESTING, INC**

DRILL STEM TEST REPORT

Weigel Family Partnership LLC

17-13s-15w Russell, KS

PO Box 219
Gorham KS 67640

Bosch #3

Job Ticket: 59274

DST#: 2

ATTN: Roger Fisher

Test Start: 2014.07.20 @ 03:05:00

GENERAL INFORMATION:

Formation: **LKC "H - J"**

Deviated: No Whipstock: ft (KB)

Time Tool Opened: 04:52:00

Time Test Ended: 07:27:00

Test Type: Conventional Bottom Hole (Reset)

Tester: Jim Svaty

Unit No: 76

Interval: **3141.00 ft (KB) To 3219.00 ft (KB) (TVD)**

Total Depth: 3219.00 ft (KB) (TVD)

Hole Diameter: 7.88 inches Hole Condition: Fair

Reference Elevations: 1846.00 ft (KB)

1838.00 ft (CF)

KB to GR/CF: 8.00 ft

Serial #: 8289 Outside

Press@RunDepth: 22.70 psig @ 3153.00 ft (KB)

Start Date: 2014.07.20 End Date: 2014.07.20

Start Time: 03:05:02 End Time: 07:27:15

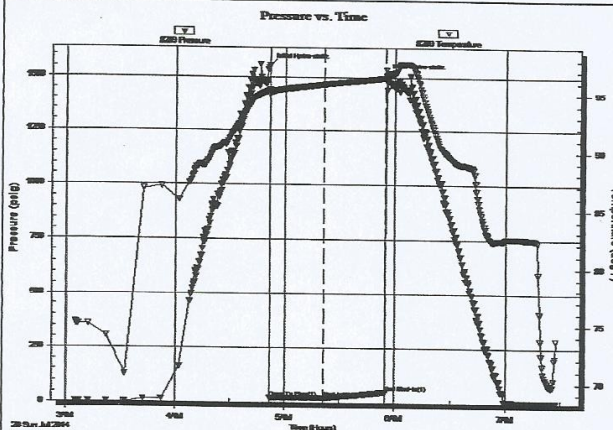
Capacity: 8000.00 psig

Last Calib.: 2014.07.20

Time On Btm: 2014.07.20 @ 04:51:45

Time Off Btm: 2014.07.20 @ 05:55:15

TEST COMMENT: 30-IFP- 1/4". Blow Died in 20 min.
30-ISIP- No Blow
Pulled



PRESSURE SUMMARY

Time (Min.)	Pressure (psig)	Temp (deg F)	Annotation
0	1550.01	95.43	Initial Hydro-static
1	20.87	95.01	Open To Flow (1)
30	22.70	95.89	Shut-In(1)
64	50.37	96.46	End Shut-In(1)
64	1504.81	97.18	Final Hydro-static

Recovery

Length (ft)	Description	Volume (bbl)
2.00	Mud 100%	0.01

* Recovery from multiple tests

Gas Rates

Choke (inches)	Pressure (psig)	Gas Rate (Mcf/d)

Trilobite Testing, Inc

Ref. No: 59274

Printed: 2014.07.21 @ 10:54:10