

DRILL STEM TEST REPORT

Weigel Family Partnership LLC

17-13s-15w Russe II, KS

PO Box 219
Gorham KS 67640

Bosch #3

Job Ticket: 59273 DST#: 1

ATTN: Roger Fisher

Test Start: 2014.07.19 @ 10:14:00

GENERAL INFORMATION:

Formation: **Toronto - LKC " D "**

Deviated: No Whipstock: ft (KB)

Time Tool Opened: 12:06:30

Time Test Ended: 16:40:00

Test Type: Conventional Bottom Hole (Initial)

Tester: Jim Svaty

Unit No: 76

Interval: **2971.00 ft (KB) To 3082.00 ft (KB) (TVD)**

Total Depth: 3082.00 ft (KB) (TVD)

Hole Diameter: 7.88 inches Hole Condition: Fair

Reference Elevations: 1846.00 ft (KB)

1838.00 ft (CF)

KB to GR/CF: 8.00 ft

Serial #: 8289 **Outside**

Press@RunDepth: 118.62 psig @ 2985.00 ft (KB)

Start Date: 2014.07.19

End Date: 2014.07.19

Start Time: 10:14:02

End Time: 16:40:30

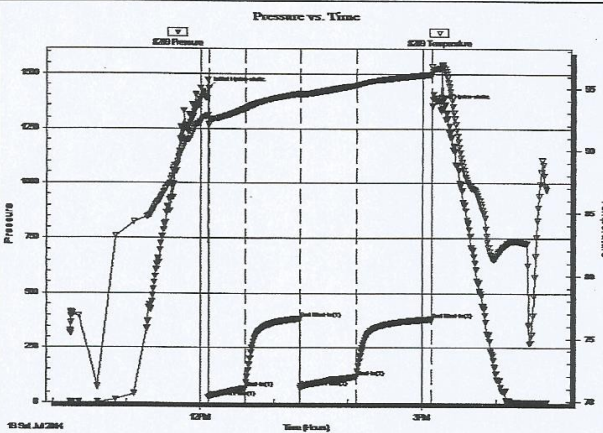
Capacity: 8000.00 psig

Last Calib.: 2014.07.19

Time On Btm: 2014.07.19 @ 12:06:15

Time Off Btm: 2014.07.19 @ 15:07:45

TEST COMMENT: 30-IFP- BOB in 9 min.
45-ISIP- Weak Surface Blow Died in 32 min.
45-FFP- BOB in 14 min.
60-FSIP- No Blow



PRESSURE SUMMARY

Time (Min.)	Pressure (psig)	Temp (deg F)	Annotation
0	1431.29	92.84	Initial Hydro-static
1	25.46	92.06	Open To Flow (1)
31	68.58	93.36	Shut-In(1)
75	384.85	94.56	End Shut-In(1)
76	70.28	94.41	Open To Flow (2)
120	118.62	95.22	Shut-In(2)
182	381.81	96.13	End Shut-In(2)
182	1350.70	96.75	Final Hydro-static

Recovery

Length (ft)	Description	Volume (bbl)
188.00	Mud 100%	1.38
0.00	GIP 122	0.00

Gas Rates

	Choke (inches)	Pressure (psig)	Gas Rate (Mcf/d)