

STEVEN P. MURPHY, P.G.

Petroleum Geologist (KS #228)

RR#1, Box 69

Otis, Kansas 67565

geomurphy@gbta.net

Cell 620.639.3030

Fax 785.387.2400

**Scale 1:240 (5"=100') Imperial
Measured Depth Log**

Well Name: Delbert Walt Trust #13-5

API: 15-179-21364-00-00

Location: Sheridan County

License Number: 8914

Spud Date: 7/8/14

Surface Coordinates: 1650' FNL & 2310' FEL (NW SW NE)

Section 13-T10S-R26W

Bottom Hole Coordinates: Vertical well, minimal deviation

Region: Kansas

Drilling Completed: 7/16/14

Ground Elevation (ft): 2571'

K.B. Elevation (ft): 2578'

Logged Interval (ft): 3450' To: TD

Total Depth (ft): LTD & RTD - 4110'

Formation: Topeka through BKC

Type of Drilling Fluid: Chemical (Mudco)

Printed by STRIP.LOG from WellSight Systems 1-800-447-1534 www.WellSight.com

OPERATOR

Company: H&C Oil Operating, Inc.

**Address: P.O. Box 86
Plainville, KS 67663**

GEOLOGIST

Name: Steven P. Murphy, PG (KS License #228)

Company: Consulting Petroleum Geologists

**Address: 3365 CR 390
Otis, KS 67565**

LogTops (Datum)

Open-hole logging was performed by Pioneer Log-Tech. The following are formation tops w/associated datums:

Anhydrite Top: 2198 (+380)

Anhydrite Base: 2232 (+346)

Topeka: 3576 (-998)

Heebner: 3790 (-1212)

Toronto: 3810 (-1232)

Lansing: 3834 (-1256)

Muncie Creek: 3948 (-1370)

Stark: 4021 (-1443)

Hushpuckney: 4041 (-1463)

BKC: 4063 (-1485)

DSTs

Drillstem testing was performed by Trilobite Testing (Oberlin shop):

DST #1 3860-3888 (LKC "C-D")
 45:60:45:60
 IF: Wk blow built to 2.25", NR
 FF: Wk blow built to 2.75", NR
 Recovery: 60' OCM (10%G, 14%O, 76%M)
 IHP: 1942 FHP: 1901
 IFP: 29-38 ISIP: 471
 FFP: 40-43 FSIP: 110
 BHT - 119 F

DST #2 3942-4020 (LKC "H, I, J")
 45:60:45:60
 IF: Built to 3.5", NR
 FF: Built to 4.5", NR
 Recovery: 62' GIP, 61' GOCM
 (30%G, 10%O, 60%M)
 IHP: 1976 FHP: 1908
 IFP: 22-39 ISIP: 689
 FFP: 40-61 FSIP: 622
 BHT - 119 F

DST #3 4018-4040 (LKC "K")
 30:30:30:30
 IF: Built to 3/4", NR
 FF: No blow, NR
 Recovery: 5' Mud
 IHP: 2055 FHP: 1917
 IFP: 17-21 ISIP: 41
 FF: 21-21 FSIP: 43
 BHT - 116 F




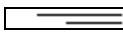
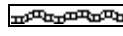
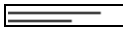
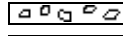

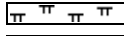
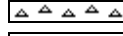
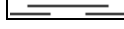

COMMENTS

Based on the results of the sample & log analysis, and DST results, it was recommended & agreed that pipe should be set to produce the LKC "J, H and possibly later the "D" zones.


Sincerely,


Steven P. Murphy, PG

ROCK TYPES

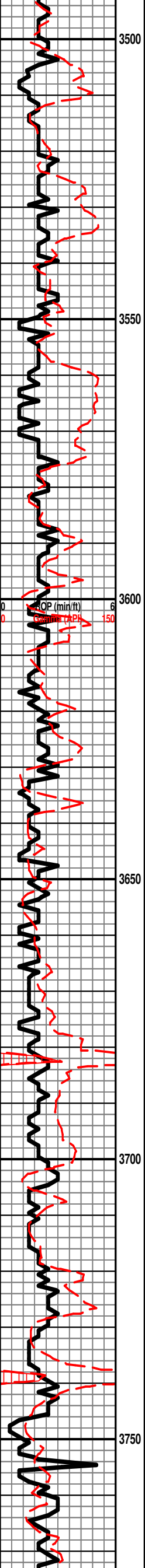
 Anhy	 Coal	 Lmst	 Shcol
 Bent	 Congl	 Meta	 Shgy
 Brec	 Dol	 Mrlst	 Sltst
 Cht	 Gyp	 Salt	 Ss
 Clyst	 Igne	 Shale	 Till

OTHER SYMBOLS

OIL SHOW	 Dead	INTERVAL	EVENT
 Even	 Gas	 Core	 Conn
 Spotted		 Dst	 Rft
 Ques			 Sidewall

Curve Track 1 ROP (min/ft) ——— Gamma (API) - - - -	Depth	Lithology	Oil Shows	Geological Descriptions	REMARKS
				<p>Bit trip @ 3465'</p>	<p>American Eagle Rig #2 MIRU 7/8/2014</p> <p>8-5/8" Surface casing set @ 262' Deviation @ 262' - 1/2 deg</p> <p>Bit trip @ 3456' Strap - 1.25' short Deviation - 3/4 deg</p> <p>NOTE: The following tops are picked from samples & ROP. Please refer to the header</p>

samples & ROP. Please refer to the header section for the log tops:



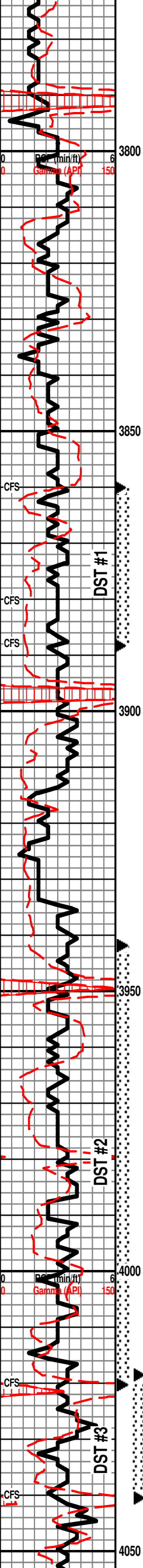
TOPEKA 3576 (-998)

LS: wht-tan, fxl n, oolitic, sl foss, sl chalky, fr
inxln por, NS

(Begin wet & dry samples @ 3750')

LS: crm-tan, vfxln, oolitic, sl foss, chalky,
dense, NS

LS: as above



LS: crm-brn-gry, vfxln, dense, chalky, NS

LS: as above

SH: blk, carb

HEEBNER 3793 (-1215)

SH: gry-grm-blk

TORONTO 3814 (-1236)

LS: wht-gry, sl cherty, f-vfxln, oolitic, fr ppt por in pt, mostly dense, rare dead stn, nsfo, no odor

SH: gry-grm-red

LANSING 3834 (-1256)

LS: wht-gry, fxl, chalky, mostly dense, rare pr-fr ppt por, ssfo on brk, spotty lite stn, sl odor

Short trip 21 stands @ 3888' prior to DST #1
Deviation @ 3888' - 1/4 deg

LS: wht-tan-gry, vfxln, dense, sl chalky, NS

LS: wht-tan-gry, f-vfxln, oolitic, mostly dense, rare pr ppt por, vssfo on brk, spotty rare stn, no odor

SH: gry-grm-blk-red-brn

DST #1 3860-3888 (LKC "C-D")
45:60:45:60
IF: Wk blow built to 2.25", NR
FF: Wk blow built to 2.75", NR
Recovery: 60' OCM (10%G, 14%O, 76%M)
IHP: 1942 FHP: 1901
IFP: 29-38 ISIP: 471
FFP: 40-43 FSIP: 110
BHT - 119 F

LS: crm-tan, fxl, oolitic, sl foss, much dense, rare pr-fr vug & ppt por, fsfo, spotty stn. fr odor

SH: gry-grm-brn

LS: wht-tan, f-vfxln, much dense, some fr-gd vug por, fsfo, spotty lite stn, str odor

LS: wht-crm-gry, vfxln, dense, cherty, NS

LS: crm-tan-gry, vfxln, dense, sl cherty, NS

SH: gry-grm-red

LS: wht-crm, fxl-sucros, fr inxln por, ssfo, spotty lite stn, fr odor

LS: wht-crm, fxl, oolitic, fr vug por, ssfo, spotty lite stn, fr odor

LS: wht-gry, vfxln, dense, NS

SH: blk, carb

MUNCIE CREEK 3949 (-1371)

SH: gry-grm-brn-red-blk

LS: wht-brn, fxl, foss, sl oolitic, much dense, some pr-fr inxln/vug por, ssfo on brk, spotty stn, sl odor

LS: as above, mostly dense

SH: gry-grm-brn

DST #2 3942-4020 (LKC "H, I, J")
45:60:45:60
IF: Built to 3.5", NR
FF: Built to 4.5", NR
Recovery: 62' GIP, 61' GOCM (30%G, 10%O, 60%M)
IHP: 1976 FHP: 1908
IFP: 22-39 ISIP: 689
FFP: 40-61 FSIP: 622
BHT - 119 F

LS: crm-tan-brn, vfxln, dense, sl foss, nsfo, tr stn, no odor

SH: gry-grm-red-blk

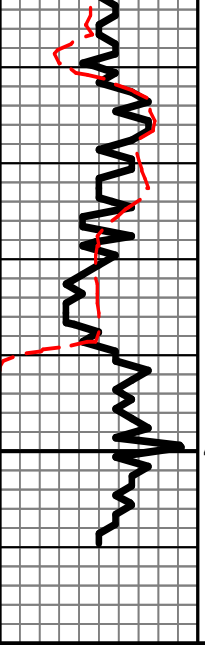
LS: wht, f-mxln, sl oolitic, fr-gd inxln/vug por, vssfo, spotty stn, sl odor

SH: blk, carb

DST #3 4018-4040 (LKC "K")
30:30:30:30
IF: Built to 3/4", NR
FF: No blow, NR
Recovery: 5' Mud
IHP: 2055 FHP: 1917
IFP: 17-21 ISIP: 41
FFP: 21-21 FSIP: 43
BHT - 116 F

LS: wht-gry, f-vfxln, oolitic in pt, pr ppt/vug por, ssfo, spotty dk stn, sl odor

SH: blk-gry-brm-grm



4100

LS: crm-tan, vfln, dense, oolitic, sl chalky, NS

BKC 4062 (-1484)

SH: gry-grn-red-blk

SH: as above

SH: as above

LS: crm-gry, vfxln, dense, NS

RTD - 4110'

LTD - 4110'