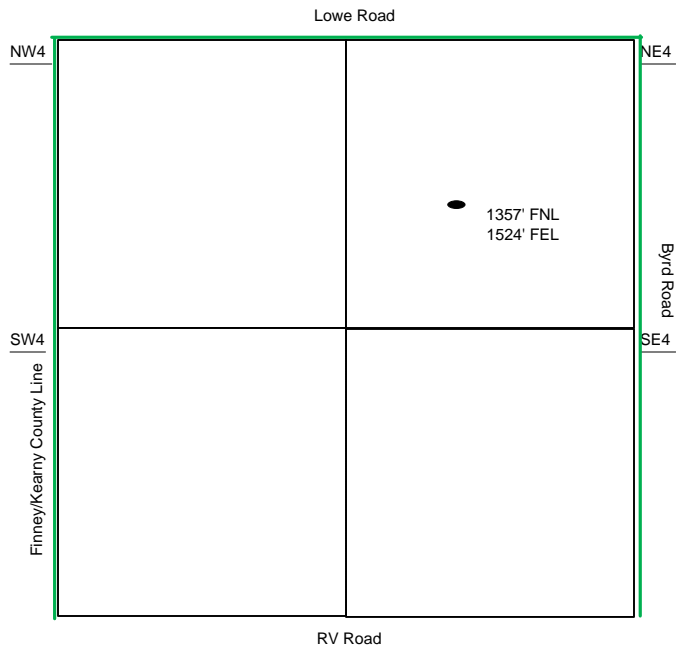
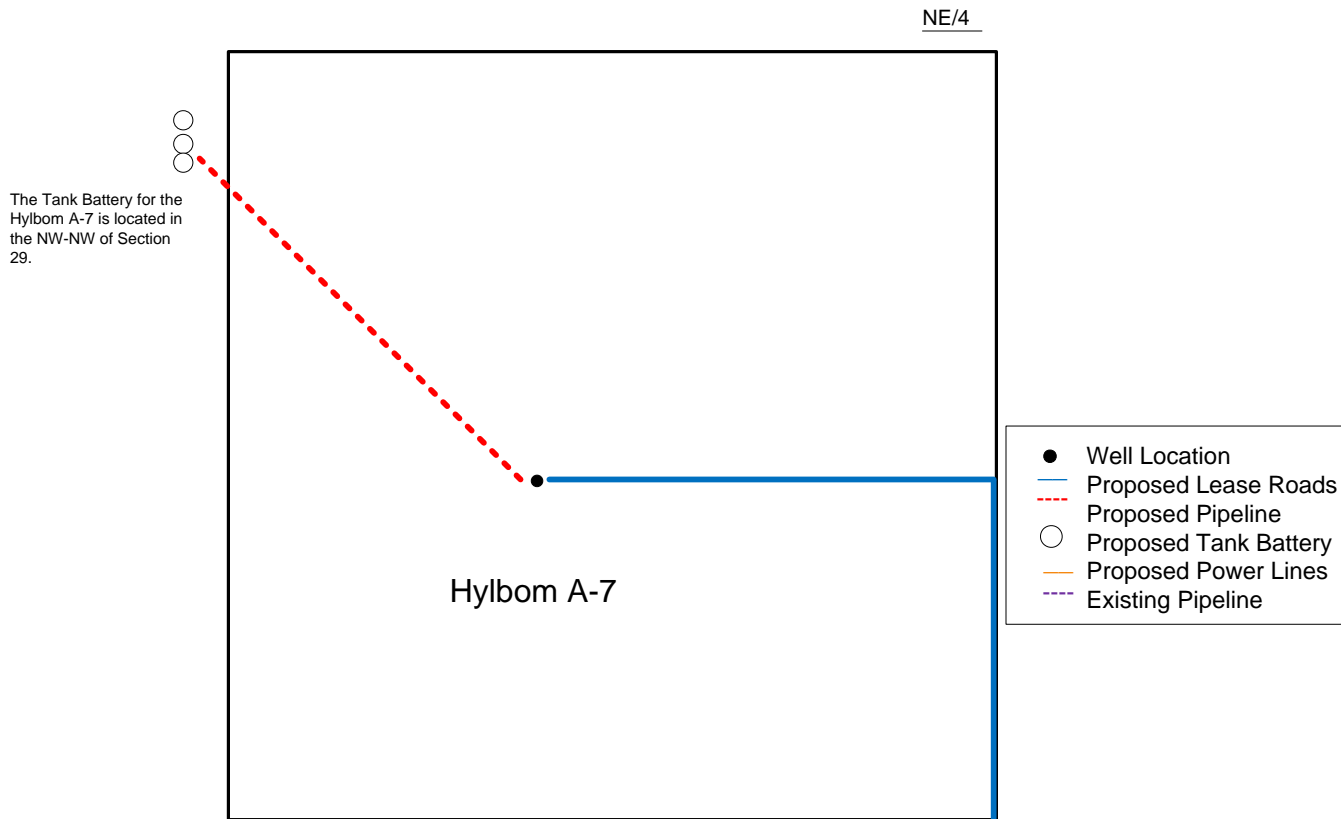


Proposed Plan of Construction

Hylbom A-7
Sec 30 T23S-R34W
Finney County, KS



Sec 30 - T23S - R34W



Proposed Details of
NE/4 Sec 30 - T23S - R34W

Proposed Site Diagram
Hylbom A-7
August 19, 2014

Note-Drawing **Not** to Scale