



Geologist's Report

Company: Blueridge Petroleum Corporation
Lease: Eiler #1-25
Field: Wildcat
Location: NE-SW-NW-SE (1820 FSL & 2175 FEL)
Sec: 25 **Twsp:** 2S **Rge:** 29W
County: Decatur **State:** Kansas
GL: 2598' **KB:** 2608'

Contractor: Val Rig #7
Spud: 7/21/14 **Comp:** 7/29/14
RTD: 3870' **LTD:** 3871'
Mud Up: 3200' **Type Mud:** Chemical/Displaced

Samples Saved From: 3200' to RTD
Drilling Time Kept From: 3200' to RTD
Samples Examined From: 3300' to RTD
Geological Supervision From: 3300' to RTD
Geologist on Well: Clint Musgrove

Surface Casing: 8 5/8" @ 227'
Production: None

Logs: By: Nabors: CNL/CDL, DIL, MEL, SONIC

Well Comparison 25

Well Comparison								
Drilling Well								
Eiler #1-25					Eiler #1			
25-2s-29w					25-2s-29w			
2608		KB			2605		KB	
Formation	Sample	SS	Log	SS	Sample	SS	Sample +/-	Log +/-
Heebner	3569	-961	3576	-968	3561	-956	-5	-12
Toronto	3600	-992	3608	-1000	3593	-988	-4	-12
Lansing	3609	-1001	3618	-1010	3605	-1000	-1	-10
BKC	3816	-1208	3821	-1213	3790	-1185	-23	-28
RTD	3870	-1262	3871	-1263	4172	-1567	305	304



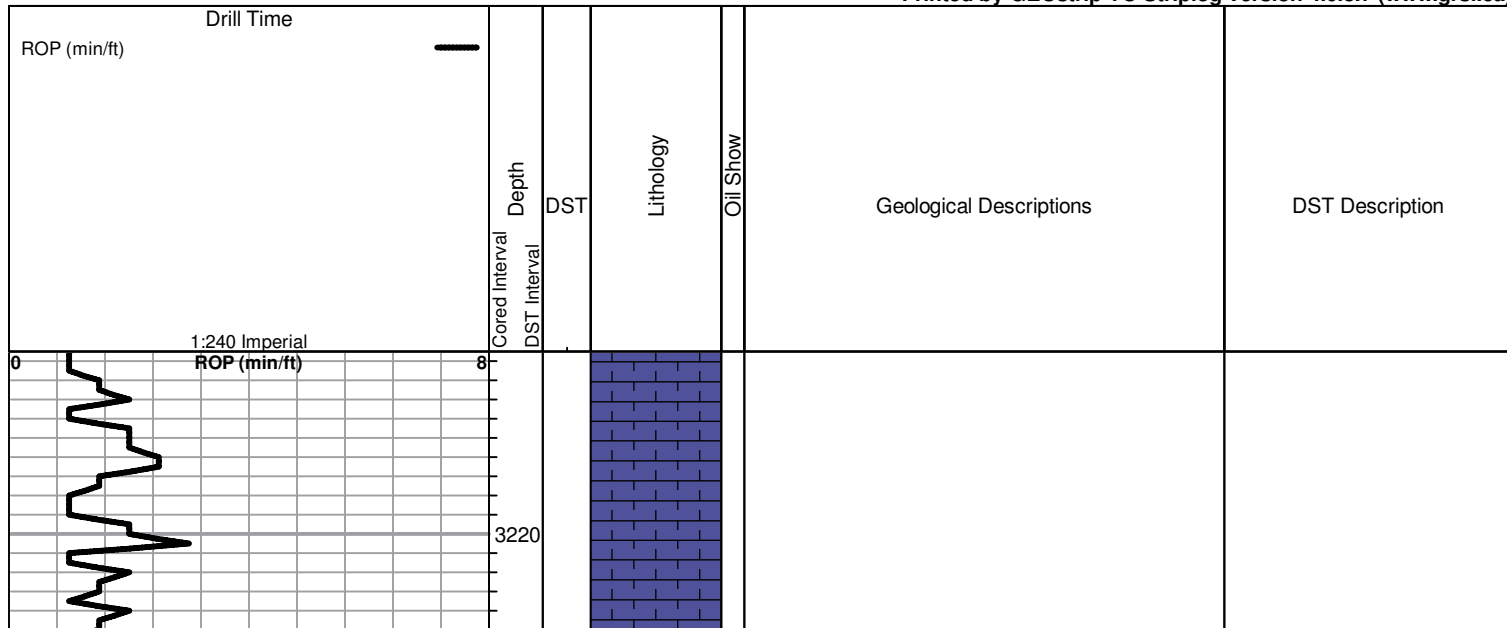
ROCK TYPES

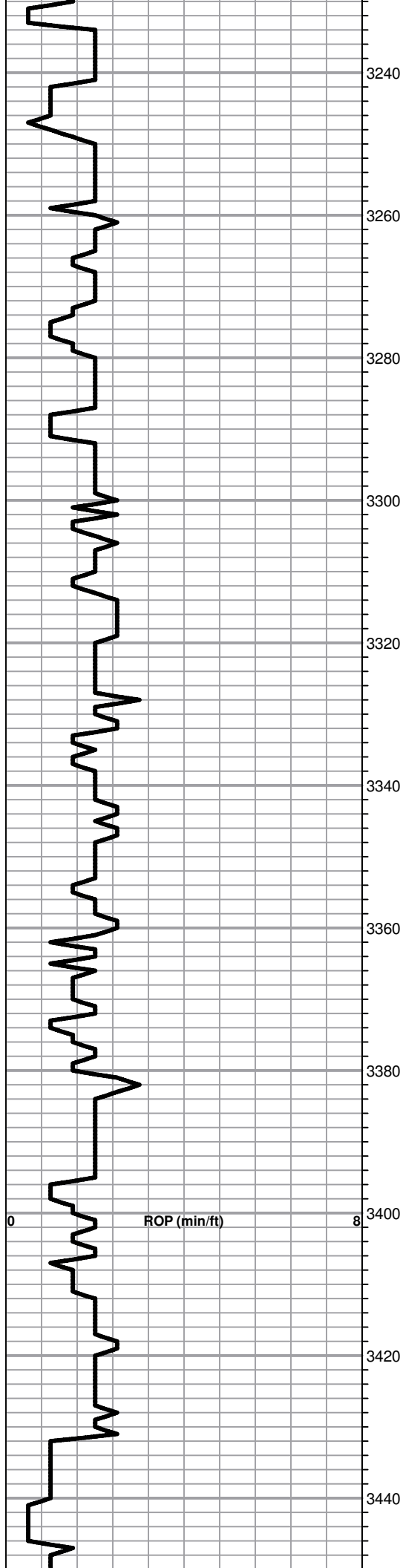
- Lmst fw<7
- shale, red
- Ss
- Carbon Sh
- Shcol

OTHER SYMBOLS

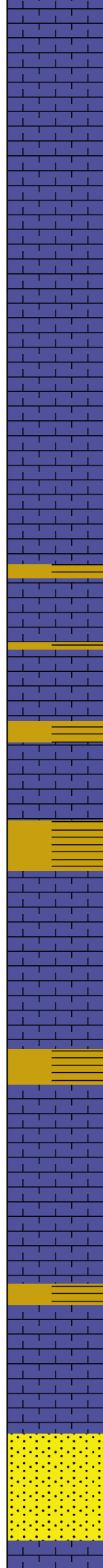
- DST**
- DST Int
 - DST alt

Printed by GEOstrip VC Striplog version 4.0.8.7 (www.grsi.ca)





3240
3260
3280
3300
3320
3340
3360
3380
3400
3420
3440



LS; crm, tan, foss, dense, n/s

LS; crm/tan, cherty, chalky, n/s

LS; tan/crm, fxl, foss. chlky in part
poor vis porosity, n/s

LS; crm, fxl, cherty, poor vis
porosity

LS; tan/gry, fxl, foss, poor vis
porosity

LS: gry, fxl, cherty in part, poor
porosity n/s

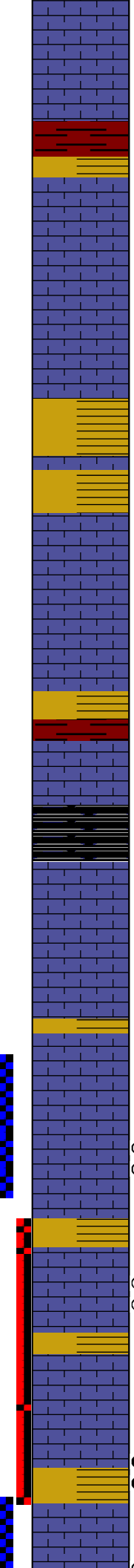
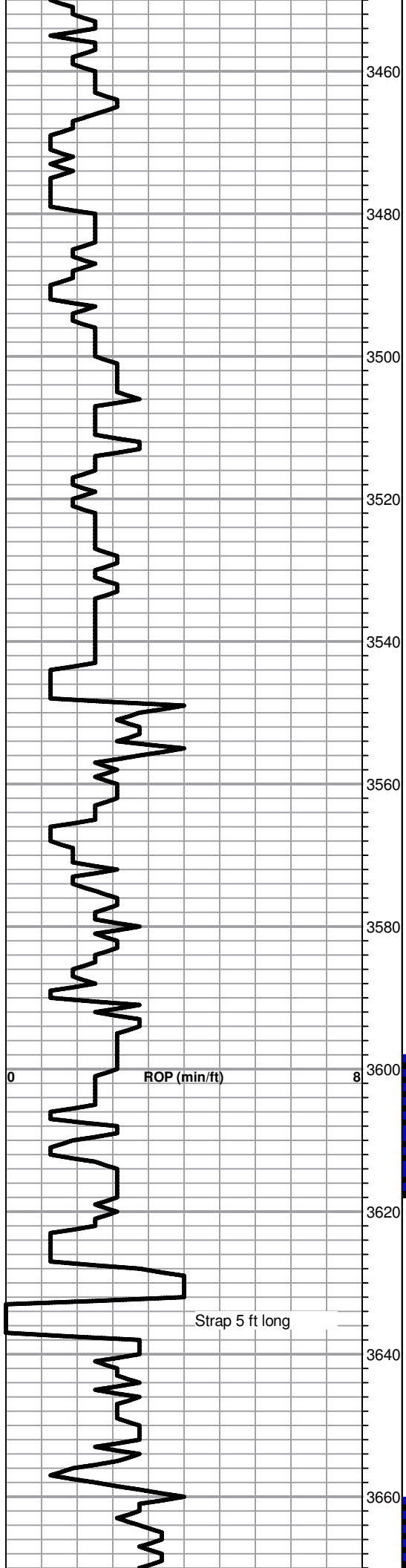
LS crm, fxl, foss n/s

LS crm, fxl, cherty, poor vis
porosity n/s

LS; wh/crm, fxl, dense n/s

Sand, wh, f grain, well sorted poor
porosity, n/s

-2608 KB-



LS; crm, foss, , ft. blk stn, nsfo, no odor

Tr. Red/Gry sh soft

LS; wh, fxl, foss in part, poor vis porosity

LS; wh/gry, fxl, foss, cherty, n/s

LS: crm/tan, fxl, foss, cherty + VC sh soft

LS; crm, fxl, cherty, poor vis porosity, nsfo

Sh. gry/red soft

Heebner

Sample 3569.0 (-961.0)
Log 3576.0 (-968.0)

Blk carb sh

LS; crm, fxl, cherty in part, ft blk stn, nsfo

Toronto

Sample 3600.0 (-992.0)
Log 3608.0 (-1000.0)

LS; crm, fxl, foss, dense, + tr dol, suc

① **Lansing**

① Sample 3609.0 (-1001.0)
Log 3618.0 (-1010.0)

LS; crm, highly foss, scatt porosity, sfo, no odor

○ LS; crm fxl, scatt vis porosty, ft blk stn. ft sfo, no odor

LS; crm, fxl, cherty, poor vis porosity, nsfo

● LS; crm, fxl, scatt vugg porosity, heavy blk stn, sfo when broken

**DST #1 3598-3618
30-45-45-60**

Blow: 2 inches
2nd: .5 inches

Recovery:
30' HWM (30%W, 70% M)

Pressures:
ISIP: 1187 psi
FSIP: 1159 psi
IFP: 12-18 psi
FFP: 21-30 psi
HSH: 1697-1697 psi

**DST #2 3622-3660
30-45-45-60**

Blow: BOB 10 mins
2nd: BOB 14.25 mins

Recovery:
.5' Clean Oil
30' SLO+HMW (1%O, 64%W, 35%M)
620' SLOM + HW (1% O 92%W, 7%M)
Tool Sample (4%O, 85%W, 11%M)

Pressures:
ISIP: 1258 psi
FSIP: 1250 psi

