

OPERATOR

Company: BEREXCO LLC
 Address: 2020 NORTH BRAMBLEWOOD
 WICHITA, KS
 67206-1094
 Contact Geologist: DANA WREATH / BRUCE MEYER
 Contact Phone Nbr: 316-265-3311
 Well Name: GOETZ # B3
 Location: NE NW NW NE S10 T14S R17W
 API: 15-051-26698-00-00
 Pool:
 State: KANSAS
 Field: TOULON
 Country: USA



BEREXCO

Scale 1:240 Imperial

Well Name: GOETZ # B3
 Surface Location: NE NW NW NE S10 T14S R17W
 Bottom Location:
 API: 15-051-26698-00-00
 License Number: 34318
 Spud Date: 6/3/2014 Time: 7:20 PM
 Region: ELLIS COUNTY
 Drilling Completed: 6/12/2014 Time: 11:45 PM
 Surface Coordinates: 165 FNL & 2145 FEL
 Bottom Hole Coordinates:
 Ground Elevation: 2000.00ft
 K.B. Elevation: 2007.00ft
 Logged Interval: 2700.00ft To: 3632.00ft
 Total Depth: 3632.00ft
 Formation: LANSING / KANSAS CITY, ARBUCKLE
 Drilling Fluid Type: CHEMICAL / FRESH WATER GEL

SURFACE CO-ORDINATES

Well Type: Vertical
 Longitude: -99.1955994
 Latitude: 38.8562541
 N/S Co-ord: 165 FNL
 E/W Co-ord: 2145 FEL

LOGGED BY



Company: SOLUTIONS CONSULTING, INC.
 Address: 108 W 35TH
 HAYS, KS 67601

Phone Nbr: (785) 639-1337
 Logged By: Geologist

Name: STEVE REED / HERB DEINES

CONTRACTOR

CONTRACTOR

Contractor: AMERICAN EAGLE DRILLING
 Rig #: 3
 Rig Type: MUD ROTARY
 Spud Date: 6/3/2014
 TD Date: 6/12/2014
 Rig Release: 6/13/2014

Time: 7:20 PM
 Time: 11:45 PM
 Time: 12:00 PM

ELEVATIONS

K.B. Elevation: 2007.00ft
 K.B. to Ground: 7.00ft

Ground Elevation: 2000.00ft

NOTES

BASED ON POSITIVE RESULTS OF DST #1, FAVORABLE STRUCTURAL POSITION TO COMPARISON WELLS, AND LOG ANALYSIS THE DECISION WAS MADE TO SET 5 1/2' PRODUCTION CASING TO FURTHER TEST THE KANSAS CITY "J" ZONE AND ARBUCKLE.

OPEN HOLE LOGGING PROVIDED BY: PIONEER ENERGY SERVICE
 DUAL INDUCTION LOG, DUAL COMPENSATED POROSITY LOG, AND MICRORESISTIVITY LOGS WERE PERFORMED

DRILL STEM TESTING PROVIDED BY: TRILOBITE TESTING
 FIVE (5) CONVENTIONAL DRILL STEM TESTS WERE COMPLETED

FORMATION TOPS COMPARISON AND DAILY ACTIVITY SUMMARY

	WELL NAME		COMPARISON WELL	COMPARISON WELL
	GOETZ B #3		GOETZ # C2	GOETZ # A4
	API: 15-051-26698		API: 15-051-05159	API: 15-051-02972
FORMATION	SAMPLE TOPS	LOG TOPS	LOG TOPS (DATUM)	LOG TOPS (DATUM)
ANHYDRITE TOP	1185' (+822')	1181' (+826')	NA	NA
ANHYDRITE BASE	1224' (+783')	1223' (+784')	NA	NA
TOPEKA	2982' (-975')	2981' (-974')	NA	NA
35' TOPEKA	3013' (-1006')	3012' (-1005')	-1007'	NA
HEEBNER	3228' (-1221')	3229' (-1222')	-1225'	-1220'
TORONTO	3249' (-1242')	3248' (-1241')	-1241'	NA
LKC "A"	3276' (-1269')	3276' (-1269')	-1272'	-1268'
LKC "B"	3295' (-1288')	3296' (-1289')	-1293'	-1290'
LKC "C"	3318' (-1311')	3320' (-1313')	-1313'	-1311'
LKC "H"	3408' (-1401')	3406' (-1399')	-1403'	-1400'
LKC "I"	3431' (-1424')	3431' (-1424')	-1428'	-1425'
LKC "J"	3453' (-1446')	3447' (-1440')	-1443'	-1444'
BKC	3503' (-1496')	3504' (-1497')	NA	NA
ARBUCKLE	3518' (-1511')	3517' (-1510')	-1513'	-1508'
RTD	3632' (-1625')	3633' (-1626')	-1530'	-1536'

SUMMARY OF DAILY ACTIVITY

6-3-14 R.U., spud @ 7:20pm, 8 5/8" surface casing set at 263.47 w/170 sxs common, 2% gel, 3%cc

6-4-14 265', WOC, drill out plug @ 11:15am, drilling

6-5-14 1581', drilling

6-6-14 2479', drilling, CTCH, bit trip 2650, survey 3/4°, strap .44 short to board

6-7-14 3053', drilling, CFS @ 3310, CFS @ 3330, short trip (20 stands), CTCH, TOWB for DST #1

6-8-14 3330', TOWT for recovery, drilling, CFS @ 3389, CTCH, TOWB for DST #2, drilling CFS @3468

6-9-14 3468', TOWB for DST #2, drain off rainwater

6-9-14 3468' TOWB for DST #3, drain off rainwater


6-10-14 3468', Drain off water, work on mud system, drilling, CFS @ 3530, CFS @ 3537

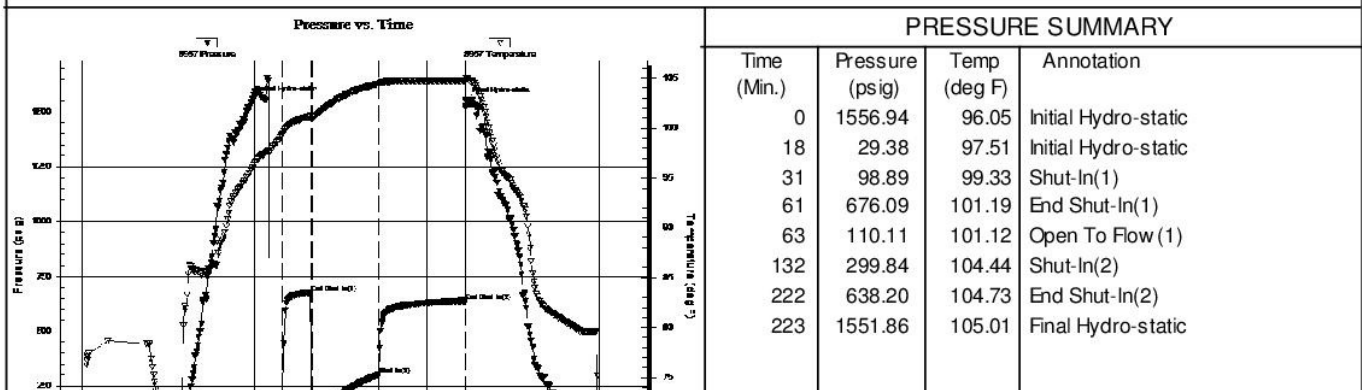
6-11-14 3537', DST #4, drilling, CFS @ 3557, DST #5, wait on weather, replace pan gasket on draw works engine

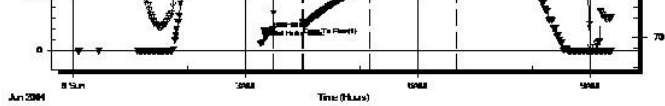
6-12-14 3557', drain off water, CTCH, drilling, TD of 3632 reached at 11:45am, CTCH, TOWB for logging, logging, prepare to set production casing

6-13-14 3632', set production casing, release rig

DST #1 SUMMARY

	DRILL STEM TEST REPORT		
	Berexco LLC. 2020 N. Bramblewood Wichita KS 67206 ATTN: Steve Reed	10-14-17, Ellis, KS Goetz #B3 Job Ticket: 58969 Test Start: 2014.06.08 @ 00:05:00	DST#:1
GENERAL INFORMATION:			
Formation: KC"B-C" Deviated: No Whipstock: ft (KB) Time Tool Opened: 04:00:45 Time Test Ended: 09:22:30		Test Type: Conventional Bottom Hole (Initial) Tester: Brett Dickinson Unit No: 59	
Interval: 3284.00 ft (KB) To 3330.00 ft (KB) (TVD) Total Depth: 3330.00 ft (KB) (TVD) Hole Diameter: 7.88 inches Hole Condition: Fair		Reference Elevations: 2007.00 ft (KB) 2000.00 ft (CF) KB to GR/CF: 7.00 ft	
Serial #: 8957 Outside			
Press@RunDepth: 299.84 psig @ 3293.00 ft (KB) Start Date: 2014.06.08 End Date: 2014.06.08 Start Time: 00:05:05 End Time: 09:22:30		Capacity: 8000.00 psig Last Calib.: 2014.06.08 Time On Btm: 2014.06.08 @ 02:58:30 Time Off Btm: 2014.06.08 @ 06:41:15	
TEST COMMENT: IF-BOB in 5min ISI-3/4in blow died to 1/4in FF-BOB in 2 1/2min FSI-BOB in 32min			





Recovery

Length (ft)	Description	Volume (bbl)
180.00	V SOMCW 5%O 80%W 15%M	2.52
120.00	G SWCO 30%G 55%O 15%W	1.68
440.00	GO 35%G 65%O	6.17
15.00	V SOCM 5%O 95%M	0.21
0.00	1900ft GIP	0.00

Gas Rates

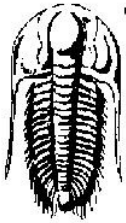
Choke (inches)	Pressure (psig)	Gas Rate (Mcf/d)

Trilobite Testing, Inc

Ref. No: 58969

Printed: 2014.06.08 @ 15:38:34

DST #2 SUMMARY



TRILOBITE TESTING, INC

DRILL STEM TEST REPORT

Berexco LLC.

10-14-17, Ellis, KS

2020 N. Bramblewood
Wichita KS 67206

Goetz #B3

Job Ticket: 58970

DST#:2

ATTN: Steve Reed

Test Start: 2014.06.08 @ 16:40:00

GENERAL INFORMATION:

Formation: **KC "E-G"**

Deviated: No Whipstock: ft (KB)

Time Tool Opened: 18:22:30

Time Test Ended: 23:11:30

Test Type: Conventional Bottom Hole (Reset)

Tester: Brett Dickinson

Unit No: 59

Interval: **3330.00 ft (KB) To 3389.00 ft (KB) (TVD)**

Total Depth: 3389.00 ft (KB) (TVD)

Hole Diameter: 7.88 inches Hole Condition: Fair

Reference Elevations: 2007.00 ft (KB)

2000.00 ft (CF)

KB to GR/CF: 7.00 ft

Serial #: 8957 Outside

Press@RunDepth: 43.00 psig @ 3339.00 ft (KB)

Start Date: 2014.06.08

End Date: 2014.06.08

Capacity: 8000.00 psig

Last Calib.: 2014.06.08

Start Time: 16:40:05

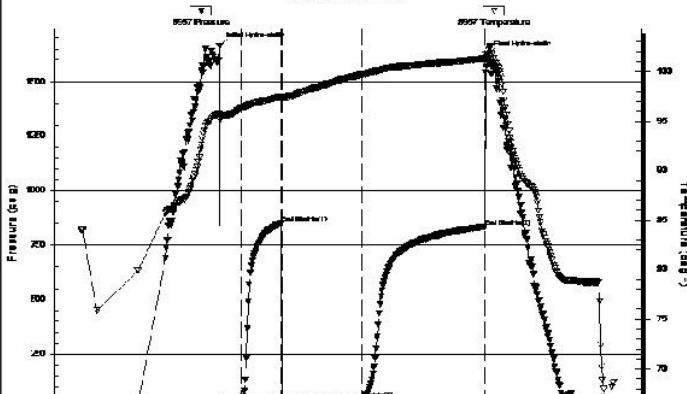
End Time: 23:11:29

Time On Btm: 2014.06.08 @ 18:22:00

Time Off Btm: 2014.06.08 @ 21:38:30

TEST COMMENT: IF- 1 1/4in blow
IS- No blow
FF- 1in blow
FS- No blow

Pressure vs. Time



PRESSURE SUMMARY

Time (Min.)	Pressure (psig)	Temp (deg F)	Annotation
0	1662.74	95.77	Initial Hydro-static
1	18.20	95.10	Open To Flow (1)
16	26.82	96.33	Shut-In(1)
45	849.86	97.45	End Shut-In(1)
46	27.83	97.21	Open To Flow (2)
105	43.00	99.70	Shut-In(2)
195	834.56	101.29	End Shut-In(2)
197	1622.64	101.50	Final Hydro-static



53,000,000

Time (Hours)

Recovery

Length (ft)	Description	Volume (bbl)
60.00	OS Mud	0.84

* Recovery from multiple tests

Gas Rates


Choke (inches)	Pressure (psig)	Gas Rate (Mcf/d)

Trilobite Testing, Inc

Ref. No: 58970

Printed: 2014.06.08 @ 23:30:24

DST #3 SUMMARY

 <p>TRILOBITE TESTING, INC</p>	DRILL STEM TEST REPORT	
	Berexco LLC. 2020 N. Bramblewood Wichita KS 67206 ATTN: Steve Reed	10-14-17, Ellis, KS Goetz B #3 Job Ticket: 58971 DST# 3 Test Start: 2014.06.09 @ 07:55:00

GENERAL INFORMATION:

Formation: **KC" I-J"**
 Deviated: **No** Whipstock: **ft (KB)**
 Time Tool Opened: 10:06:15
 Time Test Ended: 15:24:45

Interval: **3419.00 ft (KB) To 3468.00 ft (KB) (TVD)**
 Total Depth: **3468.00 ft (KB) (TVD)**
 Hole Diameter: **7.88 inches** Hole Condition: **Fair**

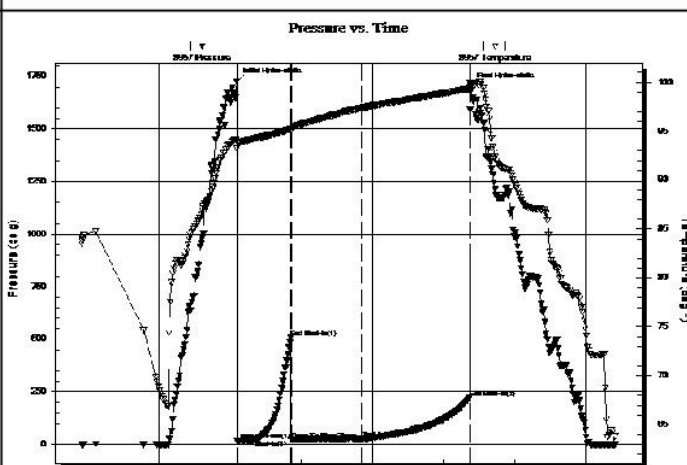
Test Type: **Conventional Bottom Hole (Reset)**
 Tester: **Brett Dickinson**
 Unit No: **59**

Reference Elevations: **2007.00 ft (KB)**
2000.00 ft (CF)
 KB to GR/CF: **7.00 ft**

Serial #: 8957 **Outside**

Press@RunDepth: **25.30 psig @ 3431.00 ft (KB)** Capacity: **8000.00 psig**
 Start Date: **2014.06.09** End Date: **2014.06.09** Last Calib.: **2014.06.09**
 Start Time: **07:55:05** End Time: **15:24:44** Time On Btm: **2014.06.09 @ 10:05:45**
 Time Off Btm: **2014.06.09 @ 13:23:15**

TEST COMMENT: IF-Weak surface blow
 IS-No blow
 FF-Weak Surface blow
 FS-No blow




PRESSURE SUMMARY			
Time (Min.)	Pressure (psig)	Temp (deg F)	Annotation
0	1725.70	94.17	Initial Hydro-static
1	18.62	93.20	Open To Flow (1)
16	20.89	94.28	Shut-In(1)
46	506.79	95.24	End Shut-In(1)
46	22.79	95.02	Open To Flow (2)
105	25.30	97.36	Shut-In(2)
197	222.35	99.34	End Shut-In(2)
198	1704.21	99.68	Final Hydro-static

Recovery			Gas Rates		
Length (ft)	Description	Volume (bbl)	Choke (inches)	Pressure (psig)	Gas Rate (Mcf/d)
25.00	OS Mud	0.35			

* Recovery from multiple tests

Trilobite Testing, Inc Ref. No: 58971 Printed: 2014.06.09 @ 15:40:00

DST #4 SUMMARY

	DRILL STEM TEST REPORT	
	Berexco LLC. 2020 N. Bramblewood Wichita KS 67206 ATTN: Steve Reed	10-14-17, Ellis, KS Goetz #B3 Job Ticket: 58972 DST#: 4 Test Start: 2014.06.10 @ 18:40:00

GENERAL INFORMATION:

Formation: **Arbuckle**
 Deviated: No Whipstock: ft (KB)
 Time Tool Opened: 20:57:15
 Time Test Ended: 02:35:30

Interval: **3500.00 ft (KB) To 3537.00 ft (KB) (TV D)**
 Total Depth: 3537.00 ft (KB) (TVD)
 Hole Diameter: 7.88 inches Hole Condition: Fair

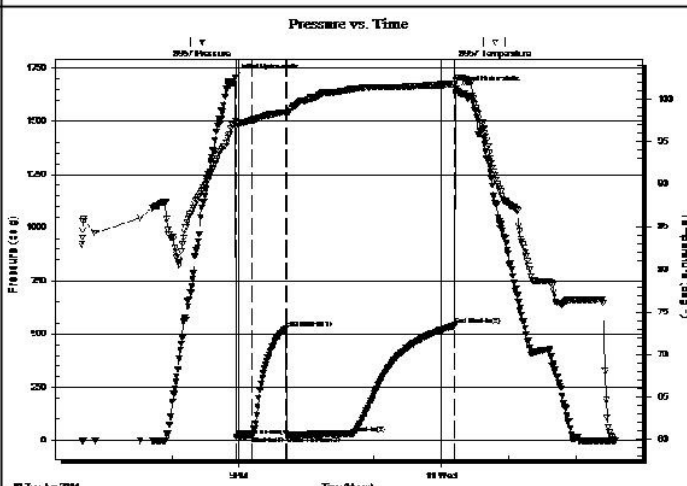
Test Type: Conventional Bottom Hole (Reset)
 Tester: Brett Dickinson
 Unit No: 59

Reference Elevations: 2007.00 ft (KB)
 2000.00 ft (CF)
 KB to GR/CF: 7.00 ft

Serial #: 8957 Outside

Press@RunDepth: 33.27 psig @ 3534.00 ft (KB) Capacity: 8000.00 psig
 Start Date: 2014.06.10 End Date: 2014.06.11 Last Calib.: 2014.06.11
 Start Time: 18:40:05 End Time: 02:35:29 Time On Btm: 2014.06.10 @ 20:56:45
 Time Off Btm: 2014.06.11 @ 00:13:45

TEST COMMENT: IF-2in blow
 IS-No blow
 FF-weak surface blow
 FS-No blow



PRESSURE SUMMARY			
Time (Min.)	Pressure (psig)	Temp (deg F)	Annotation
0	1706.40	97.43	Initial Hydro-static
1	17.50	96.84	Open To Flow (1)
16	22.53	97.51	Shut-in(1)
46	528.74	98.46	End Shut-in(1)
46	24.93	98.25	Open To Flow (2)
106	33.27	101.23	Shut-in(2)
196	539.80	101.75	End Shut-in(2)
197	1653.98	102.17	Final Hydro-static

Recovery			Gas Rates		
Length (ft)	Description	Volume (bbl)	Choke (inches)	Pressure (psig)	Gas Rate (Mcf/d)
23.00	V SOCM 5%O 95%M	0.32			
2.00	Free Oil	0.03			


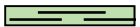




* Recovery from multiple tests

Tribolite Testing, Inc

Ref. No: 58972

Printed: 2014.06.11 @ 08:23:28

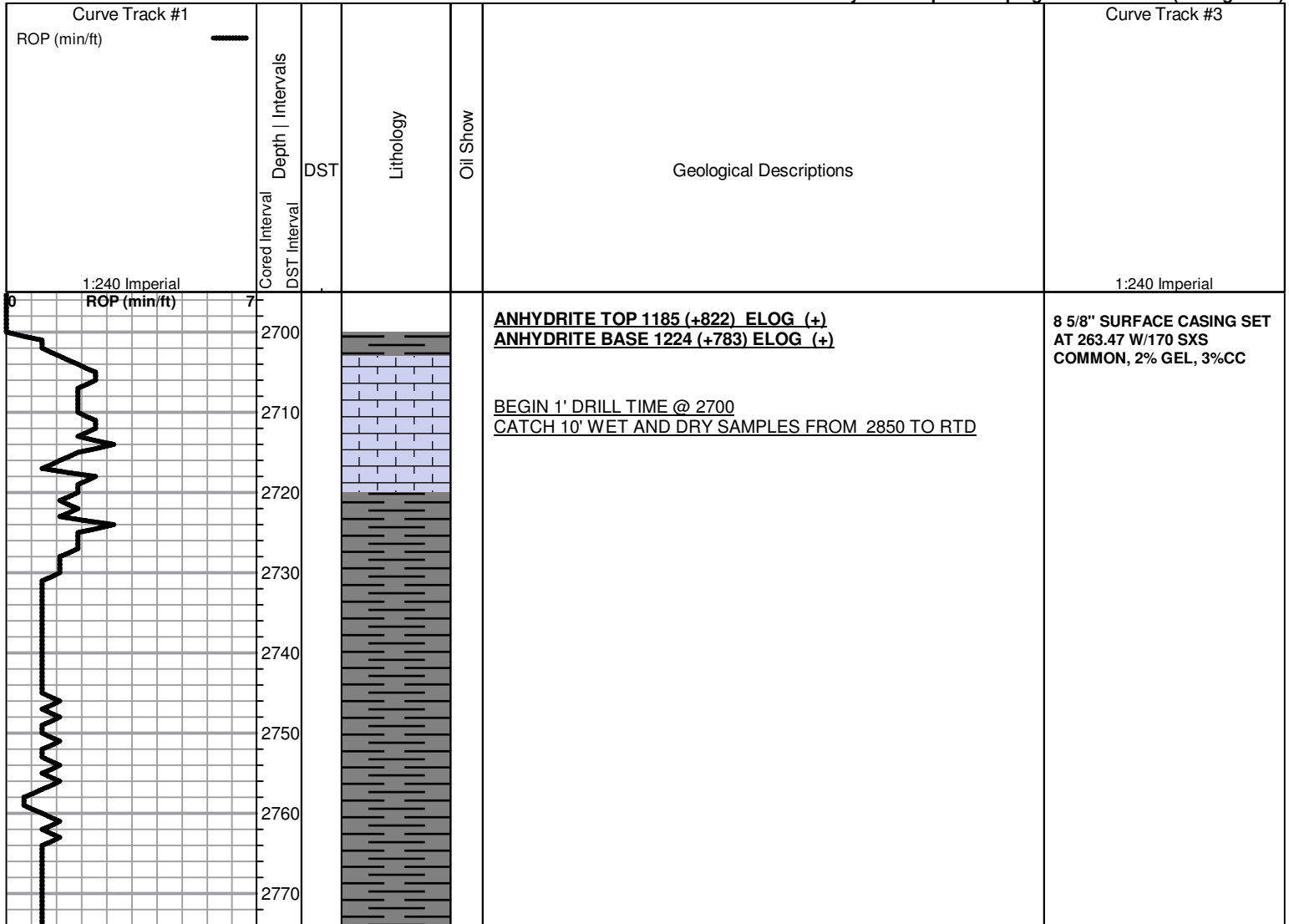
ROCK TYPES

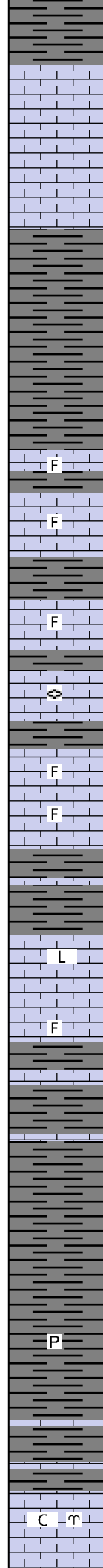
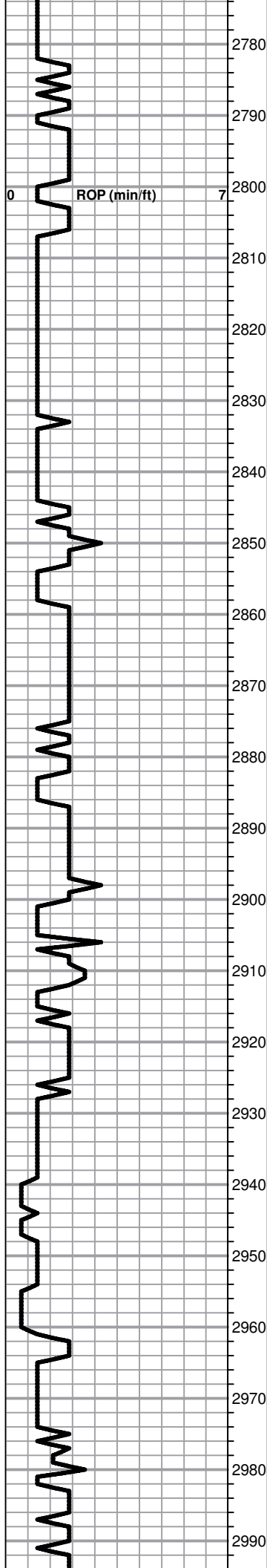
 Dolprim	 shale, grn	 Carbon Sh
 Lmst fw7>	 shale, gry	 shale, red

ACCESSORIES

MINERAL	FOSSIL	STRINGER	TEXTURE
▲ Chert, dark	∩ Bryozoa	~~~~ Chert	C Chalky
P Pyrite	F Fossils < 20%		L Lithogr
	⊕ Oolite		
	⊗ Fossilinid		

Printed by GEOstrip VC Striplog version 4.0.8.9 (www.grsi.ca)





Sh - light-medium gray, soft, fissile, forming sticky clumps

Lm - tan, granular, slightly fossiliferous, moderate hardness, brittle

Lm - cream-tan, slightly fossiliferous, fnxn, dense, hard, bedded chalk in part

Lm - tan-light brown, slightly fossiliferous, vf-fnxn, hard, brittle, no shows

Lm - light-medium brown, clastics, fnxn, hard, brittle, fusilinids, fossil casts

Lm - cream-tan, fossil fragments in medxn matrix, moderate hardness, some fine interxn porosity, light gray sticky shale in part

Lm - light brown-light gray, dark clastic fragments, fine interxn porosity, hard, brittle

Lm - light gray, vfxn, dense, hard, brittle

Lm - medium brown, vfxn to lithographic, dense, very hard, light gray sticky shale

Lm - tan, fossiliferous, fnxn matrix, dense, hard, fusilinids, pyrite

Sh - medium gray, soft, blocky

Lm - medium gray, mottled, vfxn, dense, hard

Sh - light gray, soft, sticky clumps

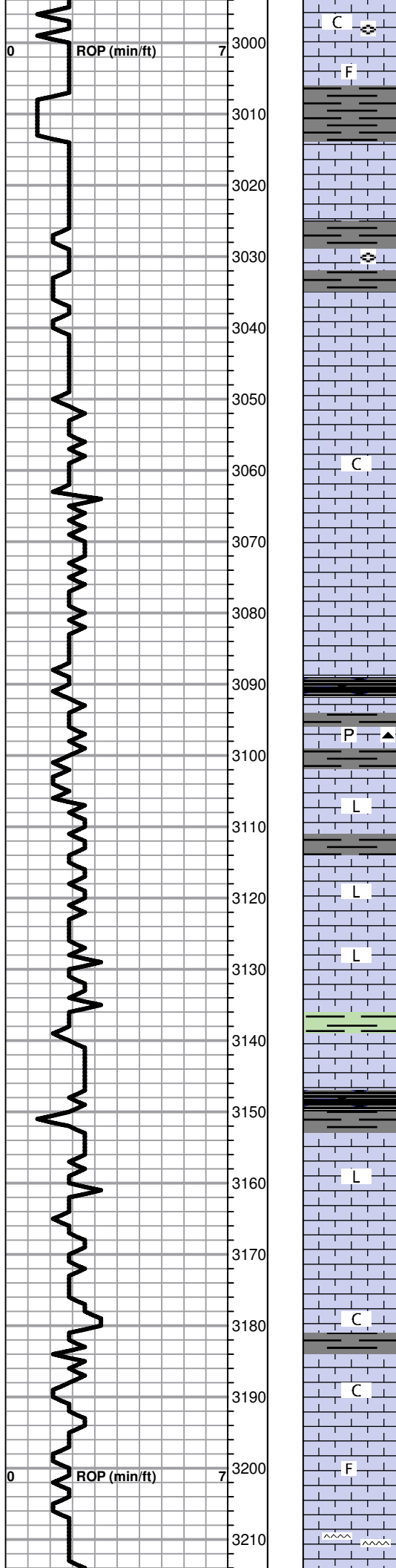
Sh - light medium gray, soft, blocky, pyrite

Sh - light-medium gray, soft, blocky, forming sticky clumps

TOPEKA SPL 2982 (-975) ELOG 2981 (-974)

Lm - cream, clastic, medxn, moderate hardness, bryozoans, white sticky chalk in part

**MUD WT. 8.5
VIS. 60
LCM 2#**



Lm - cream-tan, clastic, fnxn, hard, brittle, chalk in part, fusulinids

Lm - tan, vfxln, dense, hard, fossil casts

35' TOPEKA SPL 3013 (-1006) ELOG 3012 (-1005)

Lm - tan-light brown, vfxln to lithographic, dense, hard, brittle, clean and barren

Lm - light brown / gray, fnxn, dense, brittle, fusulinids

Lm - light-medium gray, slightly fossiliferous, fine interxln porosity, dense, hard, brittle

Lm - tan-light brown, fnxn to lithographic, dense, hard, brittle, bedded chalk in part

Lm - tan, fnxn, hard, brittle, chalk in part

Lm - cream, fn-medxln, dense, hard, fossil casts, white sticky chalk

Lm - cream-tan, fn-medxln, some hard, some friable, slightly chalky

Sh - black, carbonaceous, waxy, soft

Lm - tan, vfxln, dense, brittle, black chert, pyrite

Lm - cream, vfxln to lithographic, dense, hard, brittle, bedded chalk in part

Lm - cream-light gray, vfxln to lithographic, dense, hard, brittle

Lm - buff-medium brown, lithographic, dense, hard, brittle, clean and barren

Lm - cream, fossiliferous, fine interxln porosity, dense, hard, brittle, chalky, green sticky shale clumps

Sh - black, carbonaceous, waxy, soft, fissile

Lm - cream, lithographic, dense, hard, brittle, bedded chalk in part

Lm - cream-buff, fnxn, hard, brittle, no shows

Lm - cream-light brown, vfxln, dense, hard, brittle, chalky

Lm - tan, fossiliferous, granular, soft, slightly chalky

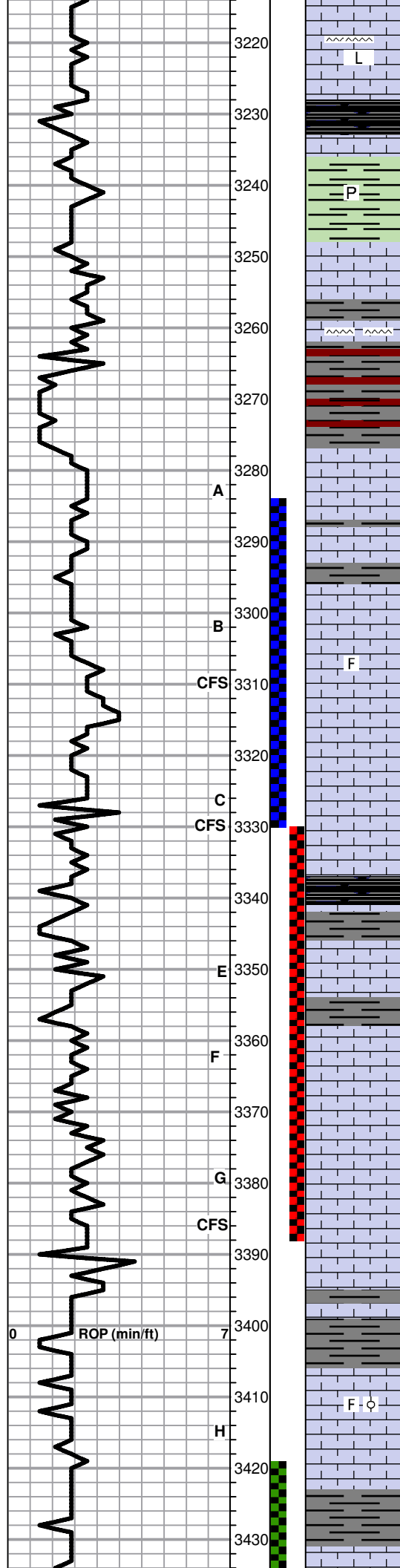
Lm - cream, slightly fossiliferous, granular, dark black gilsonitic stain, faint odor, NSFO, (one chip light gray, fnxn, scattered pinpoint porosity, dark brown stain, SFO upon crush, faint odor, slight UV fluorescence)

Lm - tan-light gray, fnxn, moderate hardness, bedded chalk, cherty

D

○

■



Lm - cream-tan, vfxln to lithographic, dense, brittle, bedded chalk, cherty

HEEBNER SPL 3228 (-1221) ELOG 3229 (-1222)

Sh - black carbonaceous, waxy, soft

Sh - light gray, soft, blocky with green soft sticky clumps, pyrite

TORONTO SPL 3249 (-1242) ELOG 3248 (-1241)

Lm - cream-tan, fnxln, bedded chalk, NSFO, no odor

D Lm - tan-medium brown, microxln, slight gilsonitic stain, no odor, NSFO, cherty

Sh - light gray / maroon, soft, blocky

LKC "A" SPL 3276 (-1269) ELOG 3276 (-1269)

○ Lm - cream-light gray, fnxln, scattered pinpoint porosity, two chips with light brown stain, SFO upon crush, bedded chalk in part

Lm - tan-light brown, microxln, dense, hard, brittle, some dark gilsonitic stain, no odor, NSFO

LKC "B" SPL 3295 (-1288) ELOG 3296 (-1289)

○ Lm - light brown, scattered fine pinpoint porosity, light golden brown stain, faint odor, NSFO

● Lm - light brown, fn-medxln, saturated dark brown stain, slight vuggy porosity, fossil clasts in part, good streaming wet cut, faint odor, NSFO

Lm - tan-cream, fn-medxln, hard, brittle

Sh - medium brown / gray, soft, blocky, some sticky

LKC "C" SPL 3318 (-1311) ELOG 3320 (-1313)

● Lm - tan, fine pinpoint porosity with scattered vugs, scattered light brown stain, SFO upon crush, faint odor, UV fluorescence

○ Lm - tan, fnxln, scattered vuggy porosity, light golden brown stain, SFO upon crush, faint odor

Sh - black, carbonaceous, fissile, soft

○ Lm - light gray, fine pinpoint porosity, slight scattered stain, NSFO, questionable odor

Lm - tan, microxln, hard, bedded chalk in part, NSFO

○ Lm - cream-light gray, oolitic, scattered fine interxln porosity, slightly vuggy, faint odor, light golden brown saturated stain, SFO upon crush

○ Lm - cream - light gray, oolitic, slight scattered pinpoint porosity, scattered light brown stain, faint odor, SFO upon crush, streaming wet cut

○ Lm - cream, fnxln, scattered pinpoint porosity, fossiliferous, scattered light brown stain, questionable odor

D Lm - cream-tan, fossiliferous with scattered interxln porosity in some, slight gisonitic stain, NSFO, no odor

Lm - cream, fnxln, no visible porosity, no stain, no odor, bedded chalk

Sh - medium gray / brown, soft, blocky

LKC "H" SPL 3408 (-1401) ELOG 3406 (-1399)

○ Lm - cream-light brown, oolitic, slightly fossiliferous, fnxln, hard, black chert, slight bedded chalk, some chips with fine pinpoint porosity, light scattered brown stain, NSFO, no odor

○ Lm - cream, fnxln, scattered pinpoint porosity, light brown stain, NSFO, good streaming wet cut, no odor

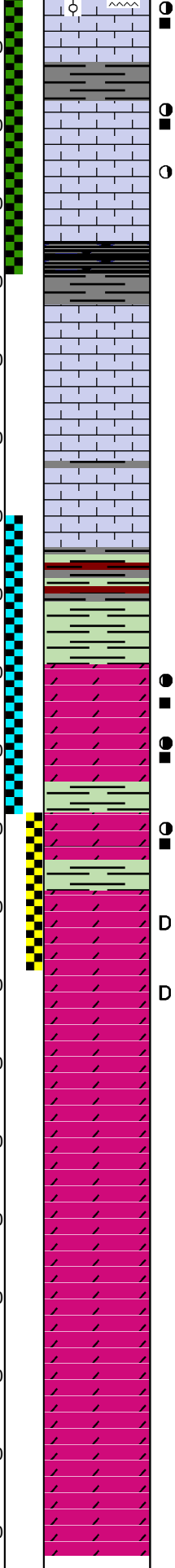
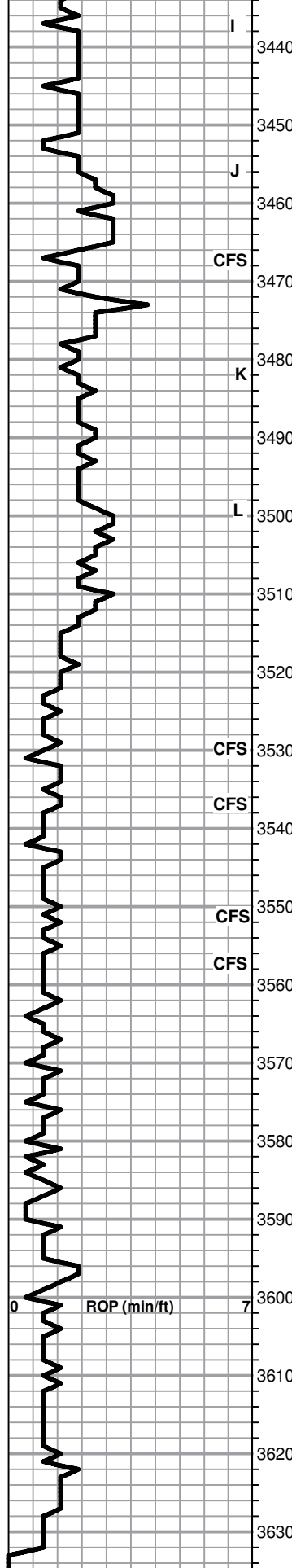
LKC "I" SPL 3431 (-1424) ELOG 3431 (-1424)

MUD WT. 8.6
VIS. 60
LCM 2#

DST #1 3284 TO 3330
SEE HEADER FOR TEST SUMMARY

DST #2 3330 TO 3389
SEE HEADER FOR TEST SUMMARY

DST #3 3419 TO 3468
SEE HEADER FOR TEST SUMMARY



Lm - cream-light gray, oolitic in part, scattered vuggy porosity with SFO, faint odor, UV fluorescence, cherty

Lm - cream, oomoldic, scattered vuggy porosity, saturated golden brown stain, good odor, SFO, UV fluorescence, gray chert

LKC "J" SPL 3453 (-1446) ELOG 3447 (-1440)

Lm - cream-slightly fossiliferous, fine pinpoint porosity, light saturated stain, NSFO, faint odor, UV fluorescence

Lm - cream, fnxn, dense, brittle, clean and barren

Sh - dark gray, firm, blocky

Lm - tan, microfxn, dense, very hard

Lm - cream-tan, micro-fnxn, hard, brittle, bedded chalk in part

Lm - cream, cryptoxn, dense, hard, brittle, no shows

BKC SPL 3503 (-1496) ELOG 3504 (-1497)

Sh - greenish gray / maroon, soft, blocky

Sh - lime green, soft, waxy

ARBUCKLE SPL 3518 (-1511) ELOG 3517 (-1510)

Dolo - light brown, vfxn-sucrosic, friable, SFO, saturated light brown stain, good odor, good streaming wet cut

Dolo - tan, fnxn, hard, SFO, saturated light brown stain, scattered vuggy porosity, good streaming wet cut, strong odor

Sh - lime green, waxy, firm

Dolo - tan, fn-medxn, fine interxn porosity, scattered light brown stain, good odor, UV fluorescence, streaming wet cut

Sh - lime green, waxy, firm

Dolo - tan, vf-fnxn, limited porosity, brittle, slight scattered gilsonitic stain, strong odor

Dolo - cream-tan, fn-medxn, slight scattered vuggy porosity, dark gilsonitic stain, good odor, NSFO

Dolo - buff-cream, fnxn, brittle, no shows

Dolo - buff, fnxn, brittle, cherty

Dolo - offwhite, fnxn, hard, brittle, clean and barren

Dolo - offwhite, fn-medxn, pinpoint porosity, hard, brittle, no shows, white chert

Dolo - cream, fn-medxn, fine pinpoint porosity, well developed rhombic xtals, no shows, no odor

Dolo - tan, medxn with fine interxn porosity, well cemented, hard, brittle, no shows, no odor, white chert

RTD 3632 (-1625) LTD 3633 (-1626)

DST #4 3500 TO 3537
SEE HEADER FOR TEST SUMMARY

DST #5 3537 TO 3557
SEE HEADER FOR TEST SUMMARY

ARBUCKLE OVERALL HAD VERY TRASHY SAMPLES