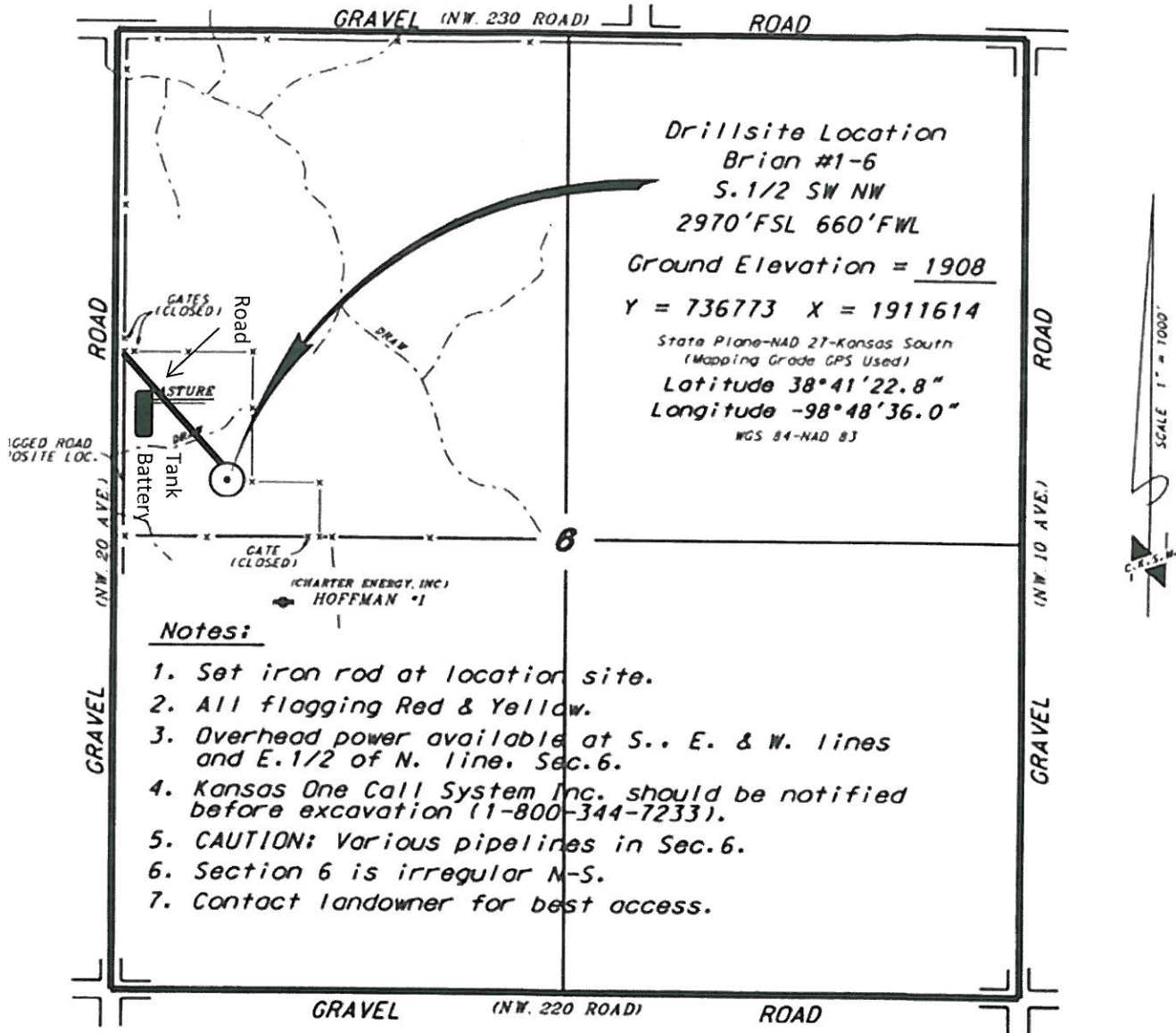


NW 1/4, SECTION 6, T16S, R13W
BARTON COUNTY, KANSAS



data is based upon the best maps and photographs available to us and upon a regular land containing 640 acres.
sections lines were determined using the normal standard of care of oilfield surveyors in the state of Kansas. The section corners, which establish the precise section lines, necessarily located, and the exact location of the drillsite location in the section is red. Therefore, the operator securing this service and accepting this plot and all other ring thereon agree to hold Central Kansas Oilfield Services, Inc., its officers and employees from all claims, costs and expenses and said entities released from any liability that or consequential damages.
derived from National Geodetic Vertical Datum.

Date August 13, 2014