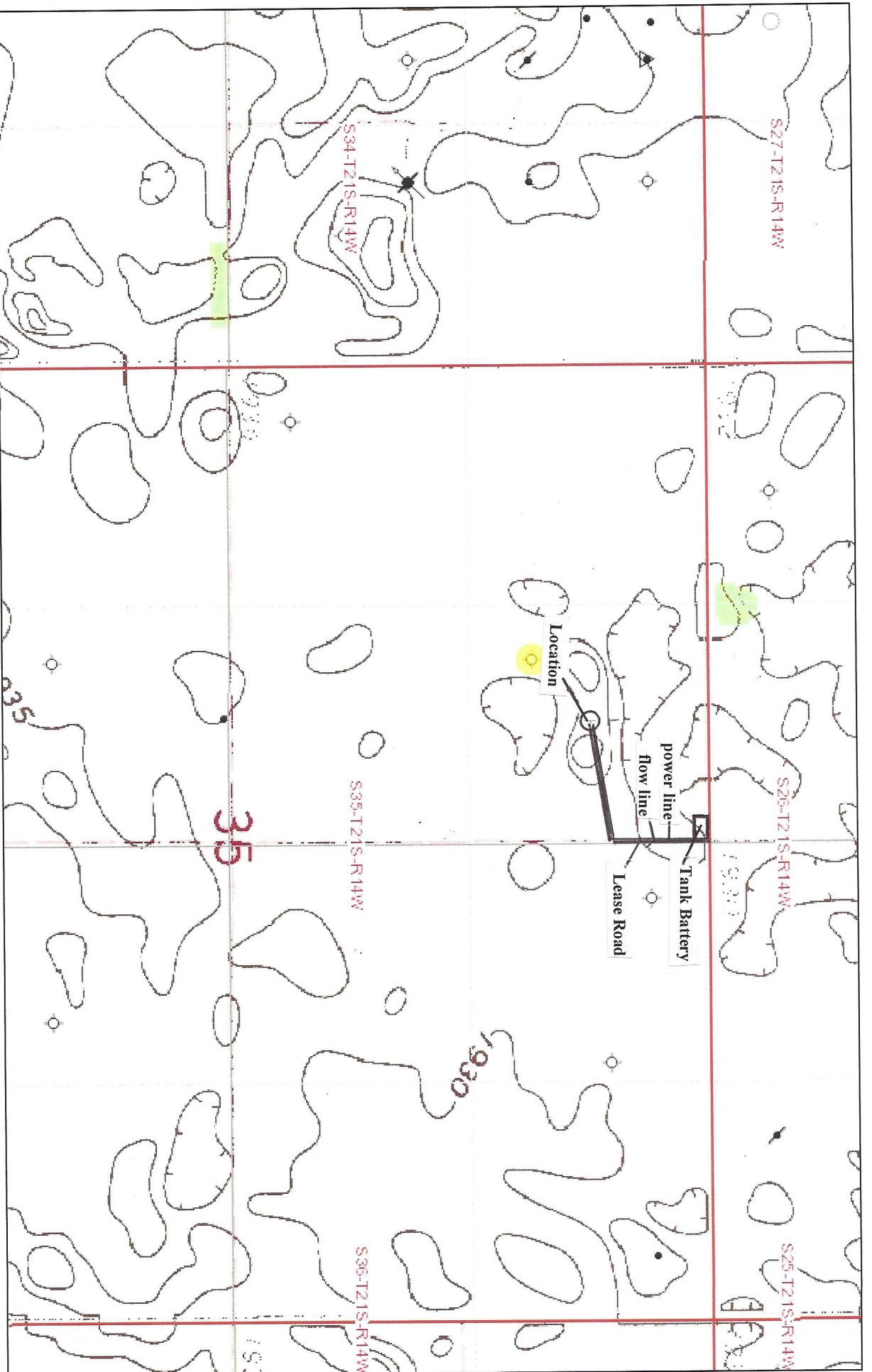
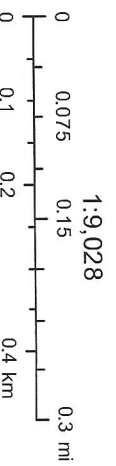


Spangenberg 35-3 plat



July 22, 2014

SE1/4 SEC 35 T21S, R14W
STAFFORD COUNTY, KANSAS



Sources: Esri, HERE, DeLorme, TomTom, Intermap, increment P Corp., GEBCO, USGS, FAO, NPS, NRCAN, Geobase, IGN, Kadaster NL