

# Adam Eldani Geo-Log/Report

## WellSight Systems

Scale 1:240 (5"=100') Imperial

Measured Depth Log

Well Name: #1 Bodecker 28B  
Location: SEC 28-TOWNSHIP 17S- RANGE 35W Wichita County  
License Number: API 15-203-20261 Region: KANSAS  
Spud Date: 05/01/201 Drilling Completed: 05/12/201  
Surface Coordinates: 1475' FNL & 2200' FWL  
155'S & 110'W of E/2 E/2 NW  
Bottom Hole Deviation Surveys are detailed through out the Geo-Report.  
Coordinates:  
Ground Elevation (ft): 3209' K.B. Elevation (ft): 3214'  
Logged Interval (ft): 3800 To: 5060' Total Depth (ft): 5050'  
Formation: Mississippian  
Type of Drilling Fluid: Mud-Co Chemical

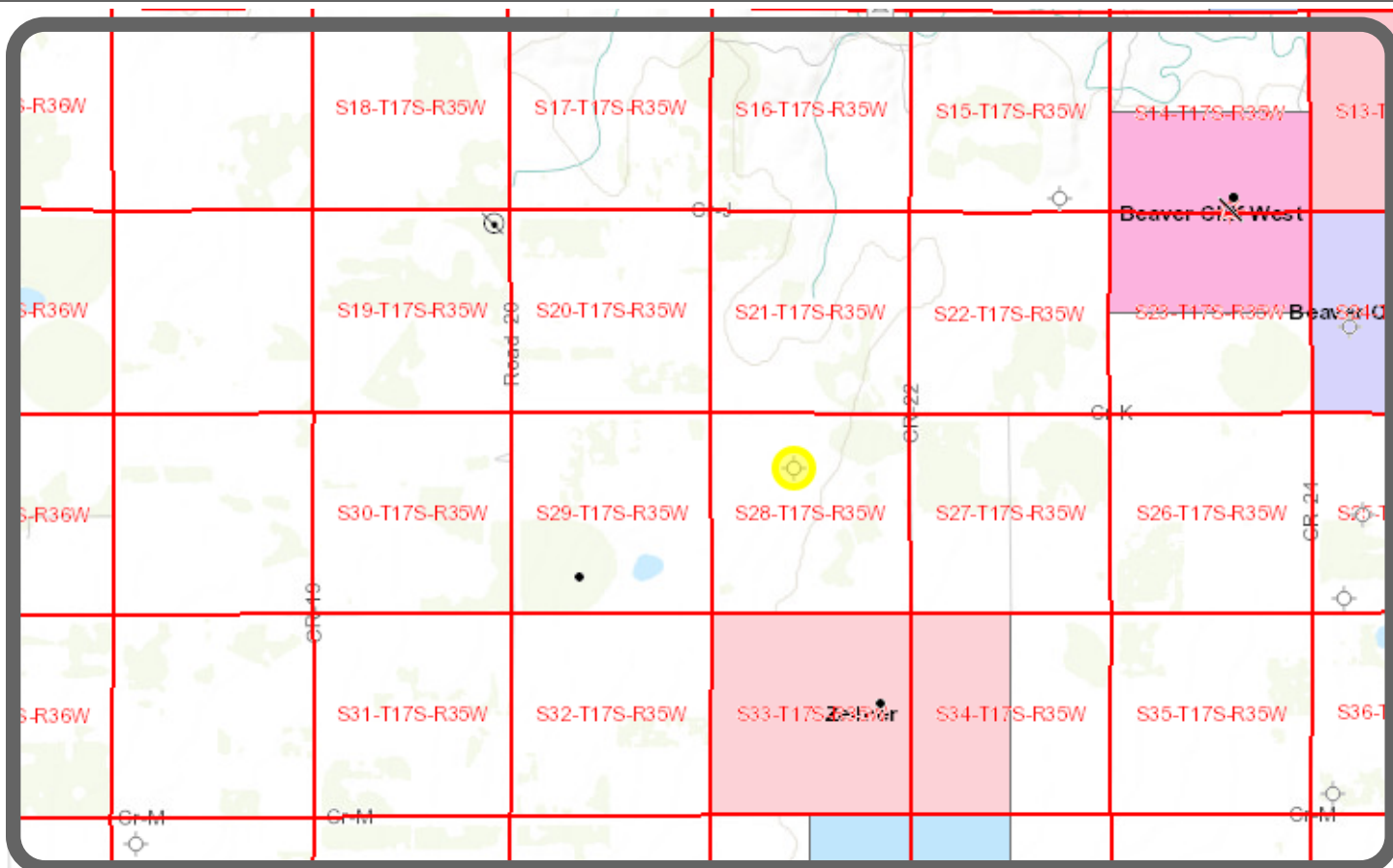
Printed by MUD.LOG from WellSight Systems 1-800-447-1534 www.WellSight.com

### OPERATOR

Company: Ritchie Exploration Inc. (drilled by WW Rig #2)  
Address: 8100 E. 22nd ST. N. #700  
Wichita, KS, 67278-3188

### GEOLOGIST

Name: Adam M.A. Eldani  
Company: Ritchie Exploration Inc.  
Address: 8100 E. 22nd ST. N. #700  
Wichita, KS, 67278-3188



## Tops & Drill Report

### TOPS: DRILLING REPORT

#### Sample Tops:

Anhydrite: 2444'+770	Anhydrite: 2447'+767
B/Anhydrite: 2464'+750	B/Anhydrite: 2466'+748
Stotler: 3616'-402	Stotler: 3613'-399
Heebner: 4006'-792	Heebner: 4014'-800
Toronto: 4024'-810	Toronto: 4032'-818
Lansing: 4054'-840	Lansing: 4060'-846
Muncie Sh: 4244'-1030	Muncie Sh: 4244'-1030
Stark Sh: 4341'-1127	Stark Sh: 4343'-1129
Hush: 4387'-1173	Hush: 4395'-1181
BKC: 4436'-1222	BKC: 4439'-1225
Pleasanton: 4442'-1228	Pleasanton: 4442'-1228
Marmaton: 4470'-1256	Marmaton: 4470'-1256
Altamont: 4504'-1290	Altamont: 4504'-1290
Pawnee: 4587'-1373	Pawnee: 4584'-1370
Myrick: 4627'-1413	Myrick: 4624'-1410
Fort Scott: 4642'-1428	Fort Scott: 4646'-1432
Cherokee: 4664'-1450	Cherokee: 4661'-1447
Johnson: 4755'-1541	Johnson: 4746'-1532
Morrow: 4832'-1618	Morrow: 4830'-1616
Mississippian: 4896'-1682	Mississippian: 4904'-1690
RTD 5050'-1836	LTD 5060'-1846

#### DAILY DRILLING REPORT:

##### DATE DEPTH:

5/01	Spud
5/02	655'
5/03	2410'
5/04	3330'
5/05	3910'
5/06	4162'
5/07	4350'
5/08	4422'
5/09	4490'
5/10	4609'
5/11	4775'
5/12	5050'

Misc.

All DST's info. are NEAR the correct log depth.

RIG: WW Rig #2

TOOL PUSHER: Lonnie Lang

MUD: MUD CO. (Tony Maestas)

GAS DETECTOR: N/A

DRILL STEM TEST'S: Diamonid Testing, Inc.

LOGS: NABORS (Iann Mabb)

OFFICE: PETER FIORINI

Comments

Moved in and rigged up. Spud at 2:30 p.m. Ran 6 jts new 23# 8-5/8" surface casing. Tally at 252', set at 260'. Cemented with 170 sacks common, 3% cc, 2% gel. Cement did not circulated. Plug down at 7:30 p.m. Cement with 90 sack common, 3% cc, 2% gel down annulus at 60' through 1" pipe. Cement did circulate to surface. Drilled out plug at 3:30 a.m. on 5/2/14.

AFTER THE RESULTS OF SAMPLE LOGGING, ELECTRIC LOGGING, AND ALL DST TESTS ANALYSIS & CALCULATIONS; IT WAS ELECTED TO PLUG AND ABANDON THE #1 Bodecker 28B.


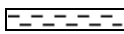

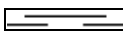

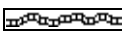


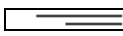
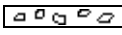
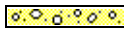

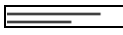


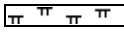

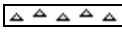

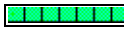

RTD 5050'. Ran Electric Log. LTD 5060'. Plug and Abandon. 1st plug set at 2500' with 50 sacks of 60/40 Poz, 4% gel, 1/4# Flocele per sack; 2nd plug set at 1480' with 80 sacks; 3rd plug set at 740' with 50 sacks; 4th plug set at 300' with 50 sacks; 5th plug set at 60' with 20 sacks. 250 total sacks. Plugged rat hole with 30 sacks and mouse hole with 20 sacks. Job complete at 9:30 p.m. Plugging orders by Ken Jehlik with the KCC.

Well Log Surveys BY: NABORS. Compensated Denisty/ Neutron Log, Dual Induction.

SAMPLES WILL BE DEPOSITED WITH KANSAS GEOLOGICAL SURVEY.

RESPECTFULLY SUBMITTED  
Adam M. A. Eldani

ROCK TYPES

 Anhy	 Clyst	 Igne	 Shale	 Till
 Bent	 Coal	 Lmst	 Shcol	
 Brec	 Congl	 Meta	 Shgy	
 Carb sh	 Dol	 Mrlst	 Slst	
 Cht	 Gyp	 Salt	 Ss	

### ACCESSORIES

#### MINERAL

- Anhy
- Arggrn
- Arg
- Bent
- Bit
- Breclfrag
- Calc
- Carb
- Chtdk
- Chtlt
- Dol
- Feldspar
- Ferrpel
- Ferr
- Glau
- Gyp

- Hvymin
- Kaol
- Marl
- Minxl
- Nodule
- Phos
- Pyr
- Salt
- Sandy
- Silt
- Sil
- Sulphur
- Tuff

#### FOSSIL

- Algae
- Amph

- Belm
- Bioclst
- Brach
- Bryozoa
- Cephal
- Coral
- Crin
- Echin
- Fish
- Foram
- Fossil
- Fuss
- Gastro
- Oolite
- Oomold
- Ostra
- Pelec

- Pellet
- Pisolite
- Plant
- Strom

#### STRINGER

- Anhy
- Arg
- Bent
- Coal
- Dol
- Gyp
- Ls
- Mrst
- Sltstrg
- Ssstrg

#### TEXTURE

- Boundst
- Chalky
- Cryxln
- Earthy
- Finexln
- Grainst
- Lithogr
- Microxln
- Mudst
- Packst
- Wackest

### OTHER SYMBOLS

#### POROSITY

- Earthy
- Fenest
- Fracture
- Inter
- Moldic
- Organic
- Pinpoint

- Vuggy

#### SORTING

- Well
- Moderate
- Poor

#### ROUNDING

- Rounded
- Subrnd
- Subang
- Angular

- Even
- Spotted
- Ques
- Dead

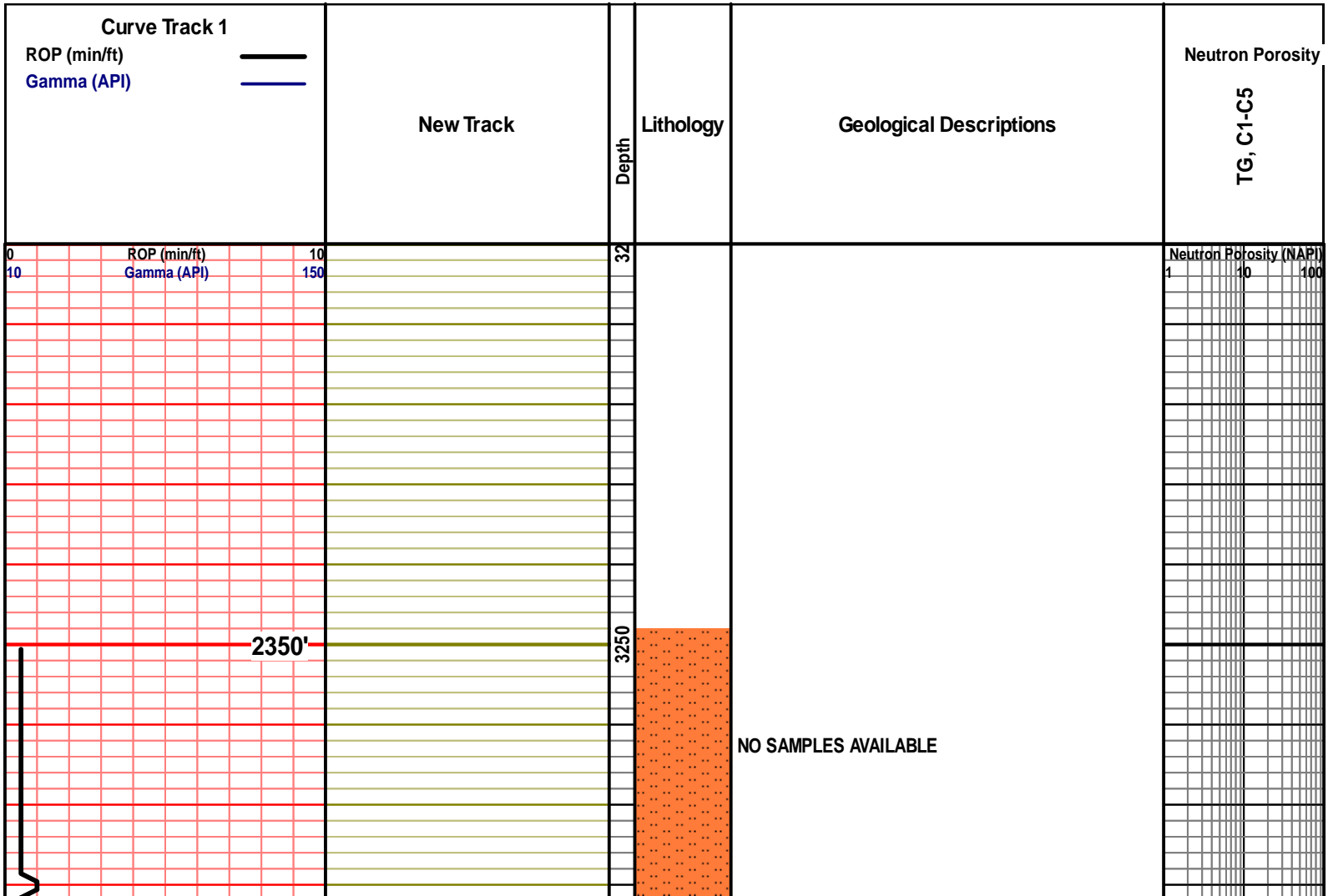
- Dst\_alt
- Dst

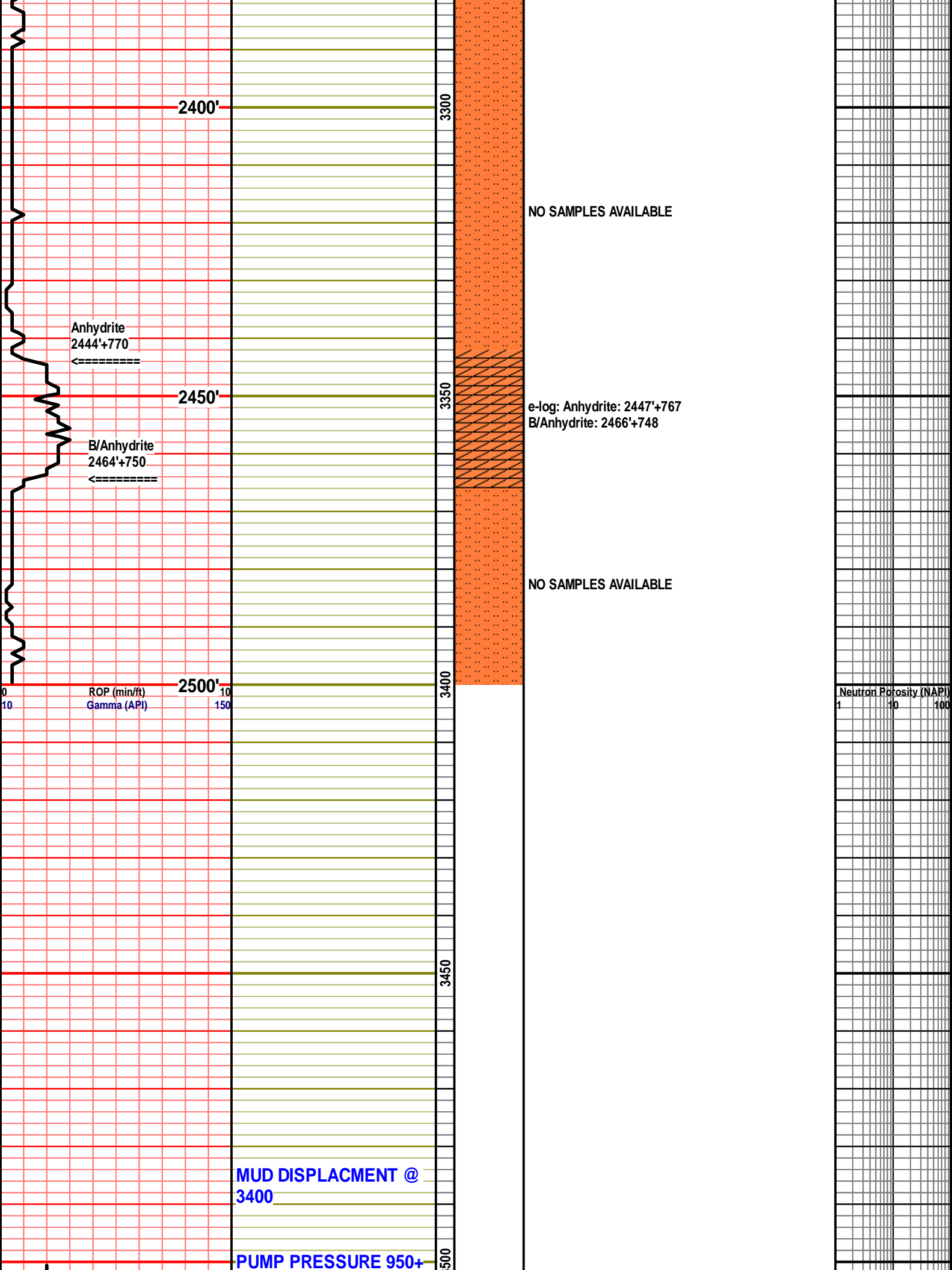
#### EVENT

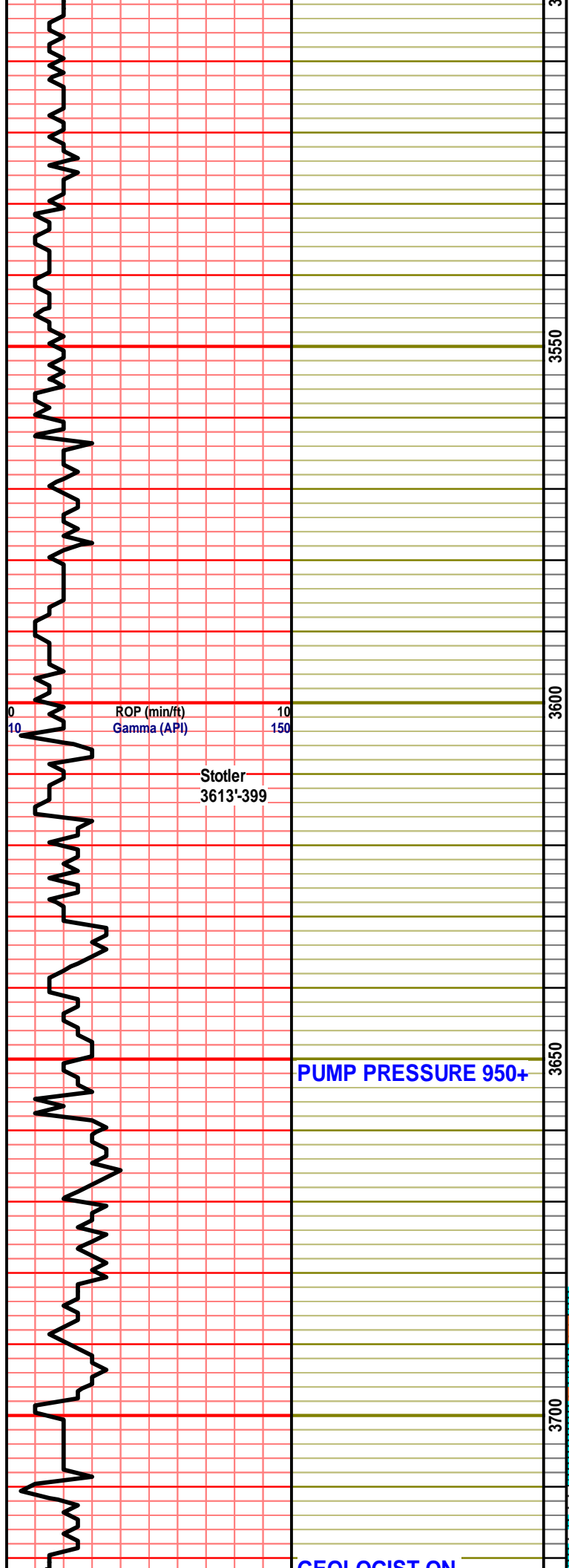
- Rft
- Sidewall

- OIL SHOW
- aimimg\_1

- INTERVAL
- Core
- Dst







NO SAMPLES AVAILABLE

NO SAMPLES AVAILABLE

Neutron Porosity (NAPI)  
1 10 100

NO SAMPLES AVAILABLE

PUMP PRESSURE 950+

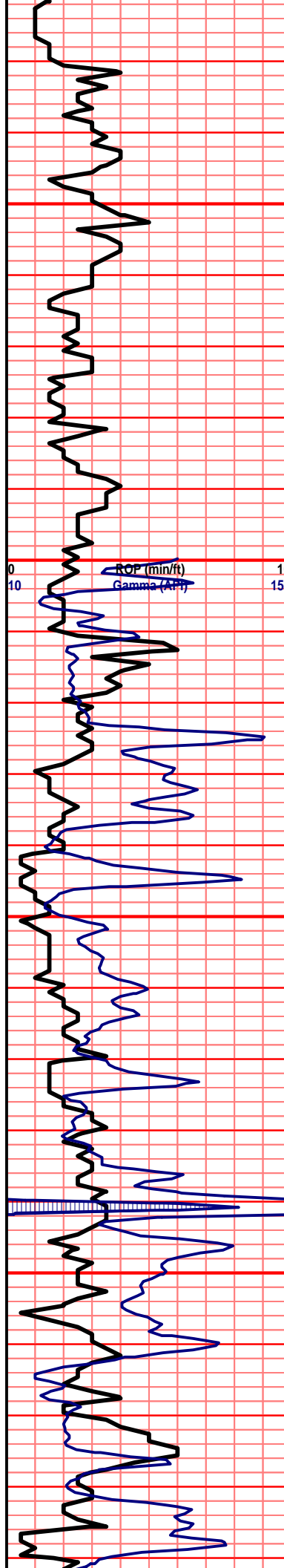
3710: mstly red and gry sh, lots of gry slit stn, tan foss lm, dense, no vi spor, no odr, ns.

3720: mstly crm-tan lm, fn-cors xln, ense, poor-no por, no odr, ns.

3730: incrs in wht chlk, incrs in drk gry sh, mstly crm xln lm, sli foss, dense, no odr ns.

GEOLOGIST ON

GEOLOGIST ON LOCATION @ 3700'



05/05/2014  
mud info.  
wt: 8.9  
Funnel Vis. 55  
Filtrate API: 6.4  
Chloride 5,000  
LCM # 2

PUMP PRESSURE 950+

PUMP PRESSURE 950+



3740: aa, no sig change, no odr, ns.

3750: sig incrs in gry slty sh, tan xln lm, dense, cemnt flooded, no odr, ns.

3760: incrs in gry slt stn, crm xln lm, no vis por, no odr, ns.

3770: incrs in slt sh, incrs in crm chlky lm, tan-gry xln-foss lm, no odr, ns.

3780: aa, incrs in gry fn xln lm, dense, no odr, ns.

3790: incrs in wht-crm chlky lm, incrs in brwn micrtic lm, v. fn grn, poor por, no odr, ns.

3800: aa, incrs in chlky lm, incrs in crm fn xln lm, v. dense, no odr, ns.

3810: incrs in crm chlky lm shw of crm xln lm, poor por, no odr, ns.

3820: aa, gry foss lm, well cemntd, v. dense, no odr, ns.

3830: aa, incrs in drty crm micrtic lm, well cemntd, crm fn xln lm, no odr, ns.

3840: aa, incrs in crm chlky-chlky lm, no odr, ns.

3850: aa, incrs in gry xln lm, foss, well cemntd, poor-no xln por, no odr, ns.

3860: aa, incrs in gry sh, shw of blk carb sh, no odr, ns.

3870: mstly crm chlky lm, some tan micrtic lm v. fn-grn, well cemntd, dense, no odr, ns.

3880: aa, no sig change, no odr, ns.

3890: incrs in tanish/crm xln-foss lm, dense, poor por, no odr, ns.

3900: lots of wht chlky-chlky lm, tan foss lm, sli xln poor por, no odr, ns.

3910: aa, incrs in chlky lm, slight incrs in gry sh, no odr, ns.

3920: lots of gry sh, shw of blk carb sh, mstly tan micrtic lm, v. fn grn, fair cemnt, no odr, ns.

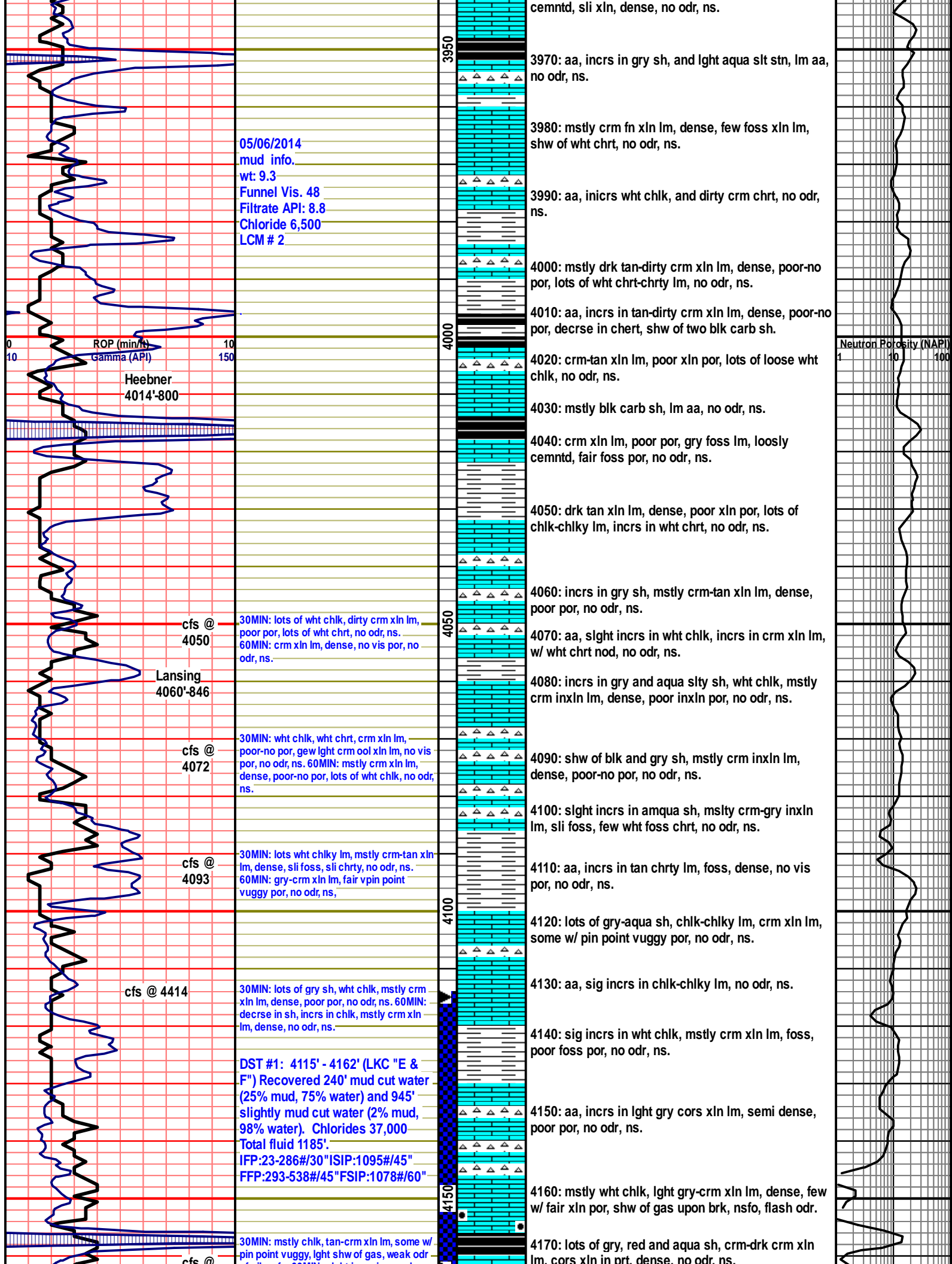
3930: shw of red sh, incrs in glht crm fn cln lm, dense, no odr, ns.

3940: mstly crm-tan xln lm, dense, shw of wht chrt, no odr, ns.

3950: lght crm foss lm, wel cemntd, few crm-wht foss chrt, dense, no odr, ns.

3960: aa, shw of lght crm micrtic lm, v. fn grn, well

Neutron Porosity (NAPI)  
1 10 100



05/06/2014  
 mud info.  
 wt: 9.3  
 Funnel Vis. 48  
 Filtrate API: 8.8  
 Chloride 6,500  
 LCM # 2

ROP (min/hr)  
 Gamma (API)  
 Heebner  
 4014-800

cfs @  
 4050

Lansing  
 4060-846

cfs @  
 4072

cfs @  
 4093

cfs @ 4414

30MIN: lots of wht chlk, dirty crm xln lm, poor por, lots of wht chrt, no odr, ns.  
 60MIN: crm xln lm, dense, no vis por, no odr, ns.

30MIN: wht chlk, wht chrt, crm xln lm, poor-no por, gew lght crm ool xln lm, no vis por, no odr, ns. 60MIN: mstly crm xln lm, dense, poor-no por, lots of wht chlk, no odr, ns.

30MIN: lots wht chiky lm, mstly crm-tan xln lm, dense, sli foss, sli chrt, no odr, ns. 60MIN: gry-crm xln lm, fair vpin point vuggy por, no odr, ns.

30MIN: lots of gry sh, wht chlk, mstly crm xln lm, dense, poor por, no odr, ns. 60MIN: decse in sh, incrs in chlk, mstly crm xln lm, dense, no odr, ns.

DST #1: 4115' - 4162' (LKC "E & F") Recovered 240' mud cut water (25% mud, 75% water) and 945' slightly mud cut water (2% mud, 98% water). Chlorides 37,000 Total fluid 1185'.  
 IFP:23-286#/30" ISIP:1095#/45"  
 FFP:293-538#/45" FSIP:1078#/60"

30MIN: mstly chlk, tan-crm xln lm, some w/ pin point vuggy, lght shw of gas, weak odr

cemntd, sli xln, dense, no odr, ns.

3970: aa, incrs in gry sh, and lght aqua slit stn, lm aa, no odr, ns.

3980: mstly crm fn xln lm, dense, few foss xln lm, shw of wht chrt, no odr, ns.

3990: aa, incrs wht chlk, and dirty crm chrt, no odr, ns.

4000: mstly drk tan-dirty crm xln lm, dense, poor-no por, lots of wht chrt-chrty lm, no odr, ns.

4010: aa, incrs in tan-dirty crm xln lm, dense, poor-no por, decse in chert, shw of two blk carb sh.

4020: crm-tan xln lm, poor xln por, lots of loose wht chlk, no odr, ns.

4030: mstly blk carb sh, lm aa, no odr, ns.

4040: crm xln lm, poor por, gry foss lm, loosly cemntd, fair foss por, no odr, ns.

4050: drk tan xln lm, dense, poor xln por, lots of chlk-chlky lm, incrs in wht chrt, no odr, ns.

4060: incrs in gry sh, mstly crm-tan xln lm, dense, poor por, no odr, ns.

4070: aa, slght incrs in wht chlk, incrs in crm xln lm, w/ wht chrt nod, no odr, ns.

4080: incrs in gry and aqua slty sh, wht chlk, mstly crm inxln lm, dense, poor inxln por, no odr, ns.

4090: shw of blk and gry sh, mstly crm inxln lm, dense, poor-no por, no odr, ns.

4100: slght incrs in amqua sh, msly crm-gry inxln lm, sli foss, few wht foss chrt, no odr, ns.

4110: aa, incrs in tan chrty lm, foss, dense, no vis por, no odr, ns.

4120: lots of gry-aqua sh, chlk-chlky lm, crm xln lm, some w/ pin point vuggy por, no odr, ns.

4130: aa, sig incrs in chlk-chlky lm, no odr, ns.

4140: sig incrs in wht chlk, mstly crm xln lm, foss, poor foss por, no odr, ns.

4150: aa, incrs in lght gry cors xln lm, semi dense, poor por, no odr, ns.

4160: mstly wht chlk, lght gry-crm xln lm, dense, few w/ fair xln por, shw of gas upon brk, nsfo, flash odr.

4170: lots of gry, red and aqua sh, crm-drk crm xln lm, cors xln in prt. dense. no odr, ns.

Neutron Porosity (NAPI)  
 1 10 100



4162

or oil, nsfo. 60MIN: sght incrs in gry sh, mstly chlky lm, tan-frm xln lm, dense, one chp w/ questionable stn, lght odr, nsfo.

**Straight Hole Survey: 1/4 degree**

05/07/2014 mud info. wt: 9.3

Funnel Vis. 60  
Filtrate API: 8.8  
Chloride 8,000  
LCM # 2

**PUMP PRESSURE 950+**

05/08/2014 mud info. wt: 9.4

Funnel Vis. 52  
Filtrate API: 9.6  
Chloride 8,500  
LCM # 2

Muncie Shale  
4244'-1030'

cfs @  
4265

30MIN: mstly wht chrt, frm-gry xln lm, sli foss, v. dense, no vis por, lots of frm chlky lm, no odr, ns. 60MIN: same as thirty min sample, sig incrs in frm chlky lm, no odr, ns.

DST #2: 4239' - 4350' (LKC "H, I & J") Recovered 50' mud, 250' water cut mud (36% water, 64% mud), 1325' mud cut water (34% mud, 64% water) and 565' slightly mud cut water (12% mud, 88% water). Chlorides 27,000  
Total fluid 2190'.  
IFP:101-724#/30"ISIP:1178#/45"  
FFP:733-998#/30"FSIP:1177#/45"

cfs @  
4315

30MIN: mstly gummy chlk-chlky lm frm-tan inxln lm, few gry xln lm, sli foss, w/ small vuggy por, shw of drk brwn oil, weak odr. 60MIN: mstly gummy chlk, shw of lght frm ool lm, mod cemnt, poor intr prtcl por, shw of drk brwn oil, weak odr.

05/09/2014 mud info. wt: 9.1

Funnel Vis. 53  
Filtrate API: 9.6  
Chloride 9,000  
LCM # 2

cfs @  
4350

30MIN: lots of blk carb sh, chlk-chlky lm, frm ool cast lm, frm xln lm, no odr, ns. 60MIN: v. gummy sample, mstly gummy chlk, aqua sh, no odr, ns.

**PUMP PRESSURE 900+**

30MIN: gry-blk carb sh, mstly wht chlk-chlky lm, mstly tan-gry xln lm, no vis



4180: lots of gry sh, mstly frm xln lm, poor-no xln por, incrs in wht-frm sli foss chrt, no odr, ns.

4190: incrs in red sh, mstly frm inxln lm, poor-no por, lots of wht chrt, no odr, ns.

4200: aa, incrs in gry sh, sig incrs in lght frm chlky lm, no odr ns.

4210: lght frm inxln lm, poor inxln por, few lght gry xln lm, scat chrt chps, dense, no odr, ns.

4220: aa, incrs in chlky lm, incrs in lght gry chrt lm, no odr, ns.

4230: aa, sig decrse in chrt lm, incrs in lght frm chlky lm, no odr, ns.

4240: slght incrs in gry sh, sig incrs in lght gry inxln lm, semi dense, no odr, ns.

4250: aa, slght incrs in frm xln lm, no odr, ns.

4260: shw of blk carb sh, mstly gry-frm inxln lm, dense, poor por, no odr, ns.

4270: mstly wht chrt, gry-brwn xln lm, fn xln in prt, v. dense, sli foss, no vis por, no odr, ns.

4280: mstly frm chlky lm, lots of wht chert, tan-brwn inxln lm, dense, cemnt flooded, no odr, ns.

4290: lots of blk carb sh, chlky lm, tan inxln lm, one chp w/ ssfo, weak odr, in sample.

4300: decrse in blk carb sh, incrs in chlk-chlky lm, tan xln lm, w/ poor pin point vuggy por, two chps w/ a ssfo, weak odr.

4310: mstly chlk-chlky lm, tan-gry cors xln lm, poor por, no odr, ns.

4320: mstly chlky lm, lots of wht frm chrt, lght frm inxln lm, no odr, ns.

4330: decrse in chlk, incrs in frm-gry xln lm, some v. dense, few w/ poor vuggy por, ssfo, v. weak-no odr.

4340: aa, shw of frm ool cast lm, v. high por, no odr, ns, no stn.

4350: shw of blk carb sh, incrs in chlk, lots of frm mool cast lm, no odr, ns.

4360: mstly gry & aqua sh, lots of chlky lm, loose pyrt, frm inxln lm, dense, no odr, ns.

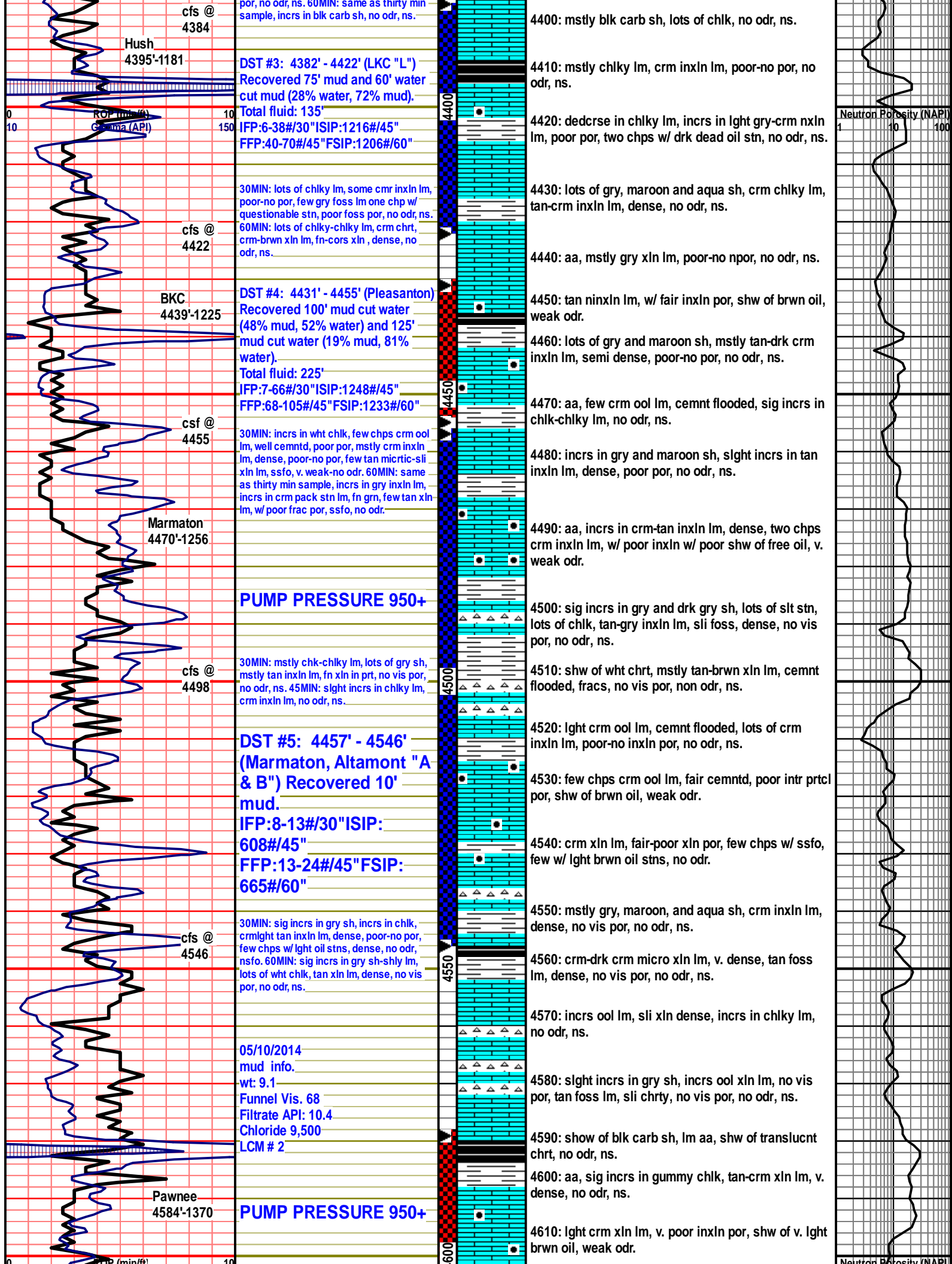
4370: aa, incrs in gry, aqua and red sh, frm-tan fn xln lm, dense, no odr, ns.

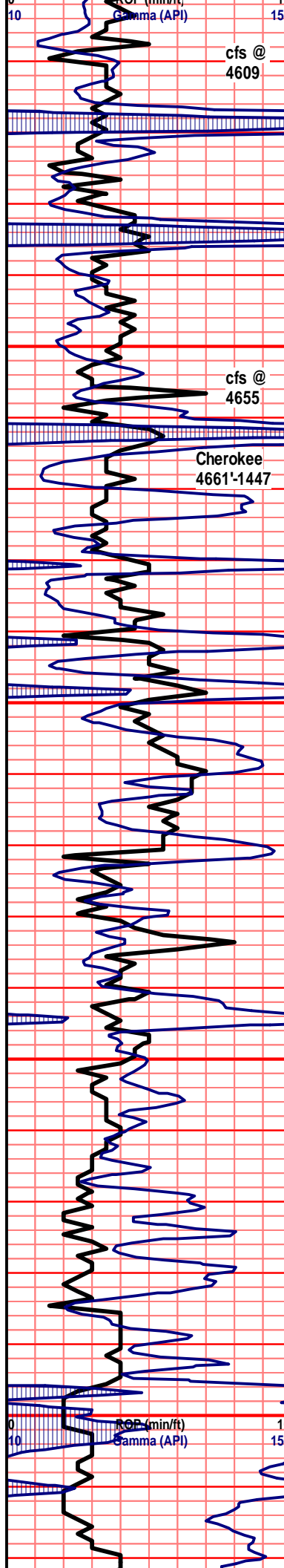
4380: aa, mstly wht chlk-chlky lm, frm ool lm, fairly cemntd, poor por, no odr, ns.

4390: v. chhlky, inhcrs in frm-lght gry xln lm, v. dense, no vis por, no odr, ns.

Neutron Porosity (NAPI)

ROP (min/ft)  
Gamma (API)





30MIN: slght incrs in gummy chlk, gry xln lm, crm xln lm, few lght crm xln lm, w/ lght oil stn, no odr, nsfo. 60MIN: shw of blk carb sh, incrs in wht foss chrt, v. dense, gry-tan xln lm, v. dense, no vis por, no odr, ns.

**DST #6: 4579' - 4655' (Pawnee, Myrick & Fort Scott) Recovered 5' mud.**  
**IFP: 7-8#/30" ISIP: 22#/30"**  
**FFP: 7-12#/30" FSIP: 31#/30"**

30MIN: incrs in gry clay sh, sig incrs in wht chrt, lots of gry inxln lm, v. dense, no vis por, no odr, ns. 60MIN: incrs in blk carb sh, incrs in gry sh, gry inxln lm, v. dense, no vis por, no odr, ns.

**PUMP PRESSURE 950+**

05/11/2014 mud info.  
 wt: 9.1  
 Funnel Vis: 55  
 Filtrate API: 8.8  
 Chloride 9,000  
 LCM # 2



4620: shw of blk carb sh, mstly crm-gry xln lm, v. dense, no vis por, no odr, ns.

4630: incrs in chlky lm, mstly brwn-gry inxln lm, v. dense, sli foss, no odr, ns.

4640: incrs in brwn and blk carb sh, brwn inxln lm, v. dense, sli foss, no vis por, no odr, ns.

4650: lots of gry-chlky lm, crm-xln xln lm, sli chlky, poor pin point vuggy por, shw of lght brwn oil, v. weak odr.

4660: lots of gry and maroon sh, translucnt chrt, tan xln lm, dense, no odr, ns.

4670: sig incrs in wht chlk, lots of drk gry-blk sh, foss pyrtzd chrt, no odr, ns.

4680: aa, incrs in blk carb sh, crm-tan inxln lm, foss, dense, no vis por, no odr, ns.

4690: lots of chlky lm, crm-tan micro xln lm, poor por, no odr ns.

4700: aa, incrs in tan/crm micro xln lm, few drty crm ool lm, cemnt flooded, no odr, ns.

4710: sig incrs in gry gummy chlk, incrs in blk sh, tan fn xln lm, dense, no vis por, no odr, ns.

4720: mstly blk-drk gry sh, tan-gry inxln lm, dense, no odr, ns.

4730: lots of tan crm chlky lm, tan inxln lm, cemnt flooded por, no vis por, no odr, ns.

4740: incrs in chlky lm, shw of wht foss chrt, incrs in tan inxlnlm, cemnt overgrowth, no odr, ns.

4750: crm-lght brwn chrt lm, no vis por, no odr, ns.

4760: aa, incrs in wht chlk-chlky lm, incrs in blk-gry sh, no odr, ns.

4770: mstly tan-lght brwn fn xln lm, sli chrt, dense, no odr, ns.

4780: shw of brwn foss chrt, drty crm-tan inxln lm, v. dense, no vis por, no odr, ns.

4790: incrs in gry chrt lm, sli foss, incrs in gry sh, lm aa, no odr, ns.

4800: mstly gry sh, crm-tan xln lm, one chp chlky xln lm, w/ slght shw of free oil, poor-no odr.

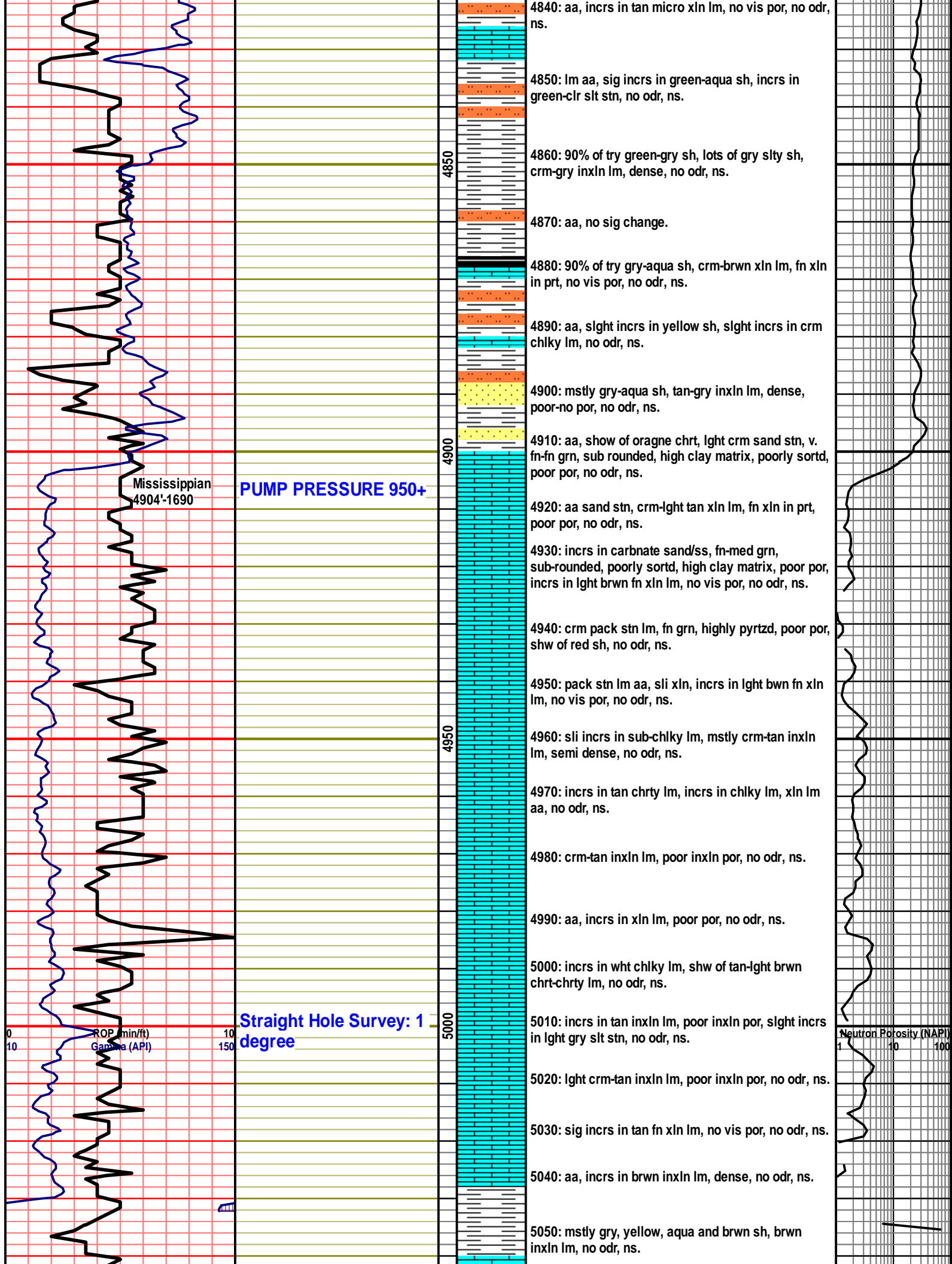
4810: lots of chlky lm, gry-tan inxln lm, v. dense, no vis por, no odr, ns.

4820: mstly tan-gry inxln lm, v. dense, poor-no por, few scat brwn chrt, no odr, ns.

4830: incrs in gry sh, incrs in gry foss xln lm, lots of crm chlky lm, no odr, ns.

ROP (min/ft)  
 Gamma (API)

Neutron Porosity (NAPI)





RTD 5050'

30MIN: poor sample, sig incrs in chlk, lots of gry, aqua and brwn sh, brwn inxln lm, poor-no por, no odr, ns. 60MIN: same as thirty min, mostly brwn xln lm, dense, poor por, no odr, ns.

5050

00

