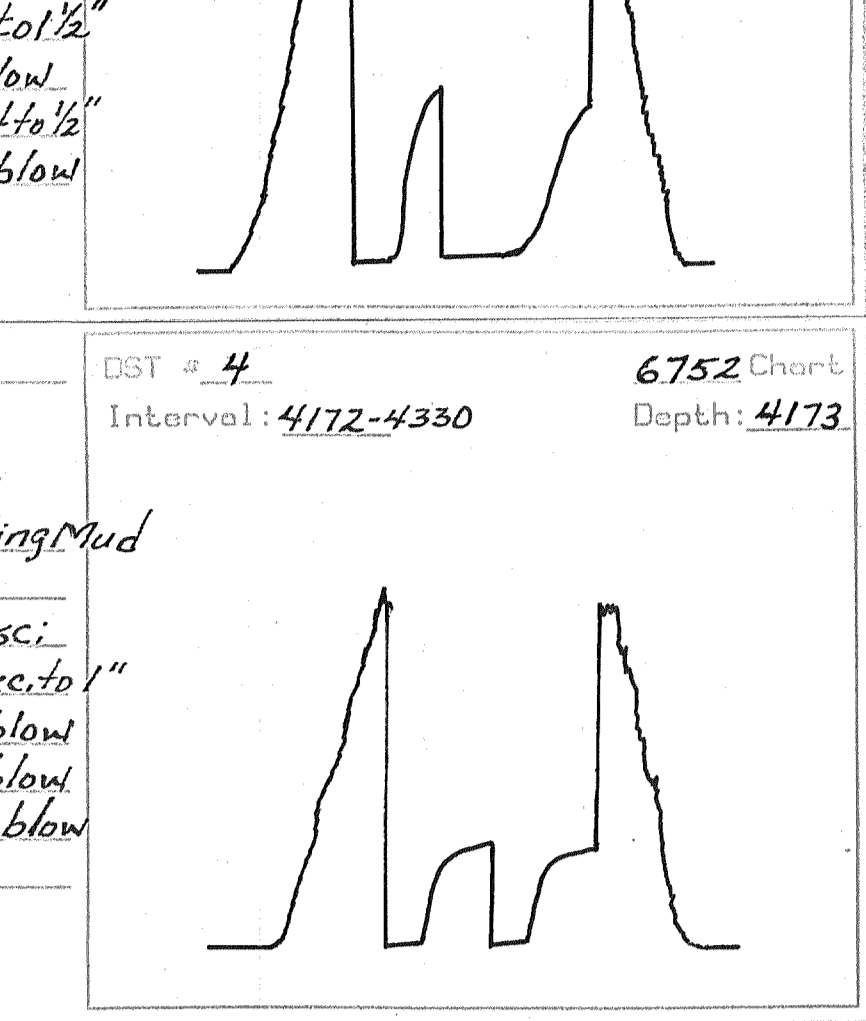


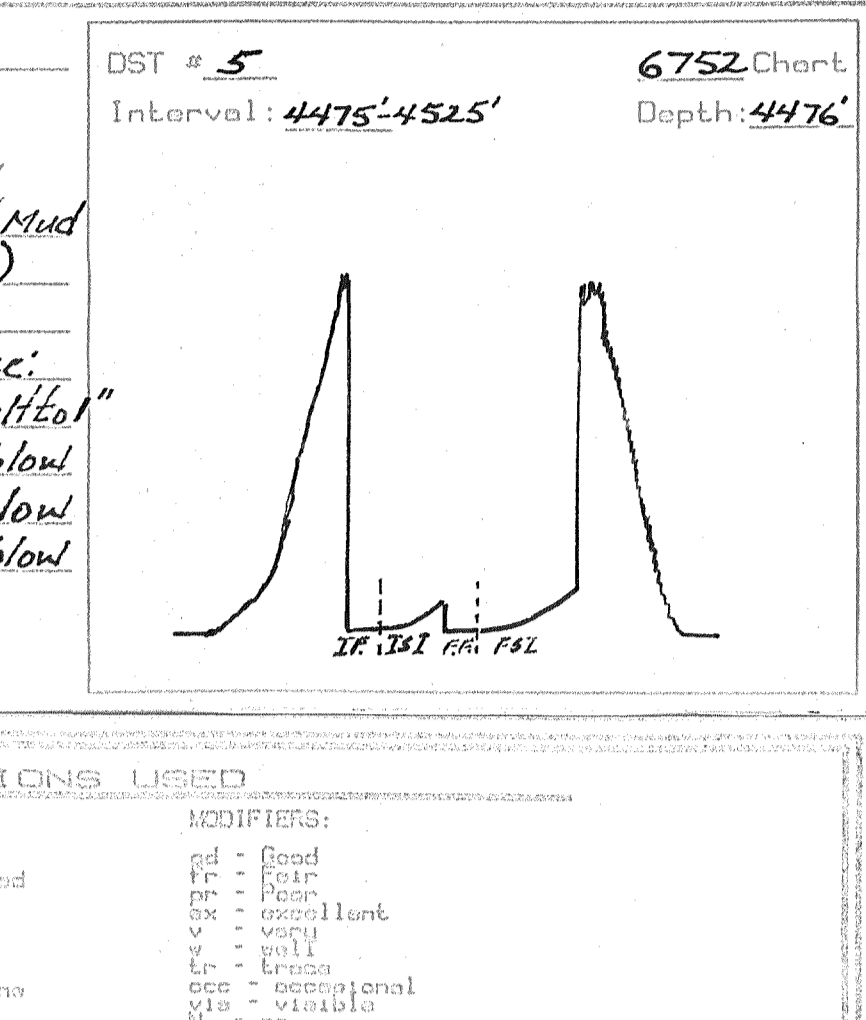
DRILLING TIME AND SHUT-INS
EL PASO
OIL COMPANY
DST # 1
WELL NO. 3-17
LOC. 15
DST # 2
WELL NO. 3-17
LOC. 15
DST # 3
WELL NO. 3-17
LOC. 15
DST # 4
WELL NO. 3-17
LOC. 15
DST # 5
WELL NO. 3-17
LOC. 15

WELL NO. 3-17
DST # 1
WELL NO. 3-17
DST # 2
WELL NO. 3-17
DST # 3
WELL NO. 3-17
DST # 4
WELL NO. 3-17
DST # 5
WELL NO. 3-17

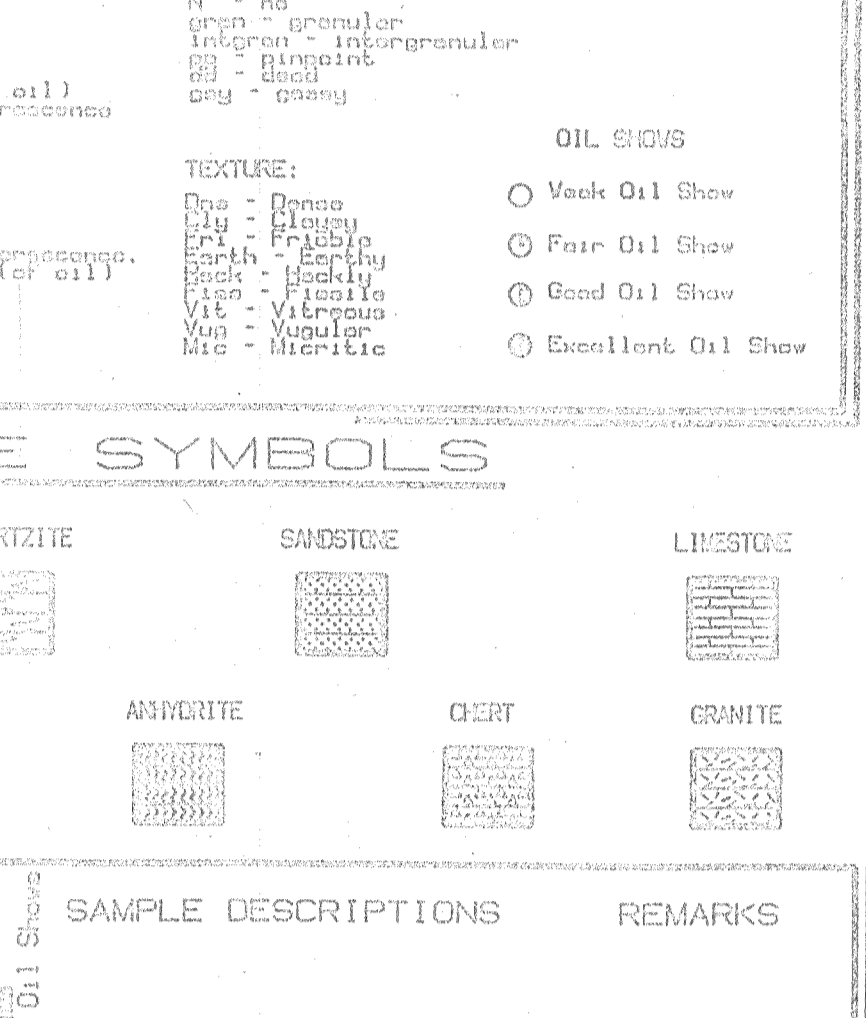
Pressure:	Time	Press.	RECOVERY
1. Initial Hydrostatic		1833 psi	210 Mud w/ oil spots in tank
2. Initial Flow: Start	0	123 psi	
3. Initial Flow: End	30	124 psi	
4. Initial Shut-in: End	60	442 psi	Blow Desc: IF-2' dia in 12 min
5. Final Flow: Start	0	122 psi	IF-1' dia in 12 min
6. Final Flow: End	30	124 psi	IF-1' dia in 12 min
7. Final Shut-in: End	60	340 psi	IF-1' dia in 12 min
8. Final Hydrostatic		1798 psi	IF-1' dia in 12 min



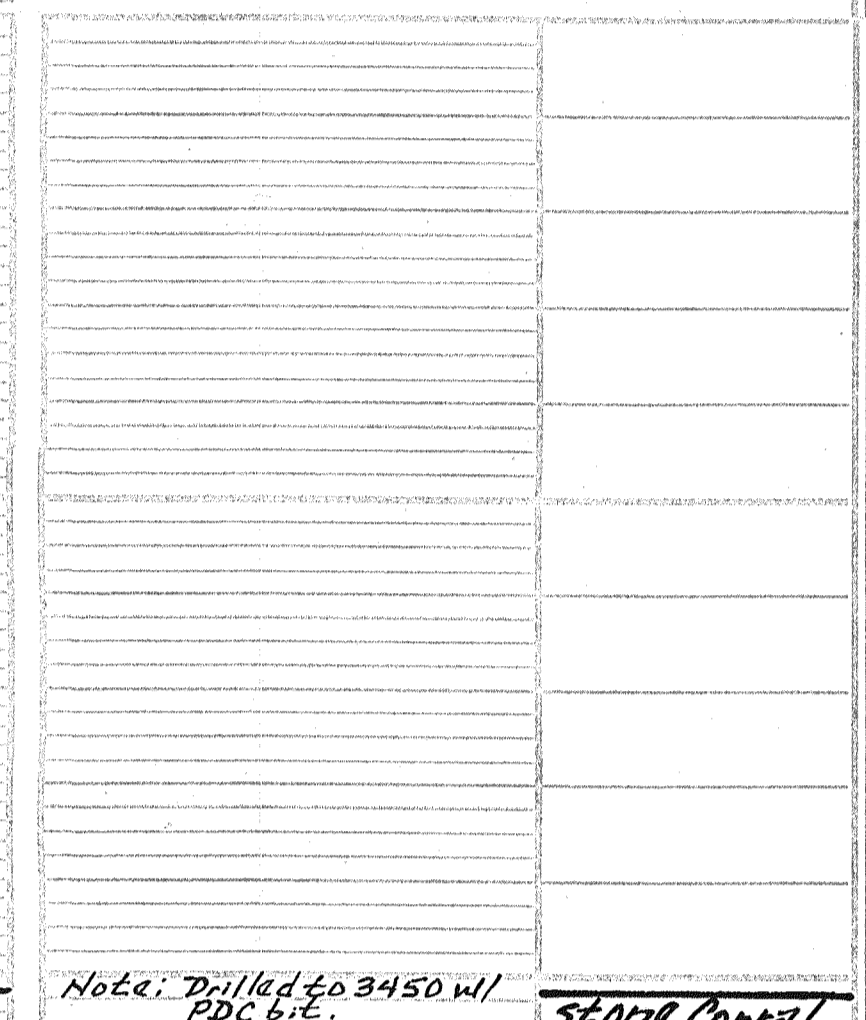
Pressure:	Time	Press.	RECOVERY
1. Initial Hydrostatic		2009 psi	20 Gas + Oil Cut Mud (249 gas, 390 oil)
2. Initial Flow: Start	0	125 psi	
3. Initial Flow: End	30	125 psi	124 1/2' light Gas Oil Cut Mud
4. Initial Shut-in: End	60	115 psi	6' Dis. Sp. of Mud (100% Mud)
5. Final Flow: Start	0	127 psi	Total Rec. 205'
6. Final Flow: End	30	101 psi	Blow Desc: IF-10' dia in 10 min
7. Final Shut-in: End	60	125 psi	IF-10' dia in 10 min
8. Final Hydrostatic		2062 psi	IF-10' dia in 10 min



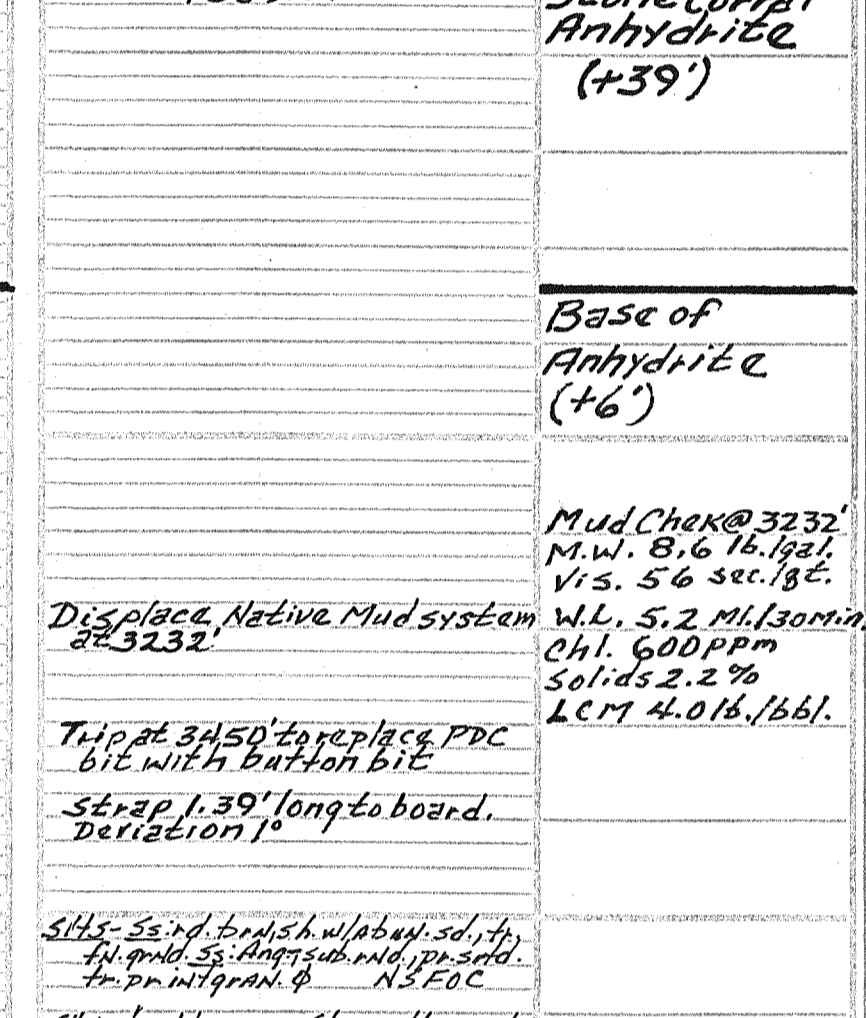
Pressure:	Time	Press.	RECOVERY
1. Initial Hydrostatic		2102 psi	62' Oil Cut Mud (35% oil)
2. Initial Flow: Start	0	23 psi	
3. Initial Flow: End	30	33 psi	
4. Initial Shut-in: End	60	97 psi	Blow Desc: IF-14' dia in 10 min
5. Final Flow: Start	0	320 psi	IF-14' dia in 10 min
6. Final Flow: End	30	49 psi	IF-14' dia in 10 min
7. Final Shut-in: End	60	584 psi	IF-14' dia in 10 min
8. Final Hydrostatic		1982 psi	IF-14' dia in 10 min



Pressure:	Time	Press.	RECOVERY
1. Initial Hydrostatic		2258 psi	10' Oil Cut Mud (30% oil)
2. Initial Flow: Start	0	16 psi	
3. Initial Flow: End	30	20 psi	
4. Initial Shut-in: End	60	22 psi	Blow Desc: IF-14' dia in 10 min
5. Final Flow: Start	0	22 psi	IF-14' dia in 10 min
6. Final Flow: End	30	23 psi	IF-14' dia in 10 min
7. Final Shut-in: End	90	269 psi	IF-14' dia in 10 min
8. Final Hydrostatic		2151 psi	IF-14' dia in 10 min



Pressure:	Time	Press.	RECOVERY
1. Initial Hydrostatic		2102 psi	62' Drilling Mud
2. Initial Flow: Start	0	36 psi	
3. Initial Flow: End	30	36 psi	
4. Initial Shut-in: End	60	620 psi	Blow Desc: IF-14' dia in 10 min
5. Final Flow: Start	0	328 psi	IF-14' dia in 10 min
6. Final Flow: End	30	49 psi	IF-14' dia in 10 min
7. Final Shut-in: End	60	584 psi	IF-14' dia in 10 min
8. Final Hydrostatic		1982 psi	IF-14' dia in 10 min



Pressure:	Time	Press.	RECOVERY
1. Initial Hydrostatic		2258 psi	10' Oil Cut Mud (30% oil)
2. Initial Flow: Start	0	16 psi	
3. Initial Flow: End	30	20 psi	
4. Initial Shut-in: End	60	22 psi	Blow Desc: IF-14' dia in 10 min
5. Final Flow: Start	0	22 psi	IF-14' dia in 10 min
6. Final Flow: End	30	23 psi	IF-14' dia in 10 min
7. Final Shut-in: End	90	269 psi	IF-14' dia in 10 min
8. Final Hydrostatic		2151 psi	IF-14' dia in 10 min

ROCK TYPES: Sandstone, Shale, Limestone, etc.

ABBREVIATIONS USED: Fr. - Fingering, V. Fr. - Very fine grained, etc.

ROCK TYPE SYMBOLS: Sandstone, Shale, Limestone, etc.

