



GEOLOGISTS REPORT

OPERATOR WHITE EXPLORATION, INC.
LEASE KREGER # 1

ELEVATIONS
KB 3866 Ft.
GL 3855 Ft.

LOCATION 1783 FSL & 584 FWL
SEC. 4 TWSP 13S RGE 42W
COUNTY WALLACE STATE KANSAS

FIELD WILDCAT

CONTRACTOR Marlin Drilling Company RIG NO. 22
COMMENCED 26 July 2014 COMPLETED 5 August 2014
MUD DISPLACED 3424 MUD TYPE Chemical
DRILLING TIME KEPT FROM 3800 TO 5330
MUD DISPLACED 3424 MUD TYPE Chemical

SAMPLES SAVED FROM 3800 TO 5330
SAMPLES EXAMINED FROM 4500 TO 5330

GEOLOGICAL SUPERVISION FROM 4570 TO 5330
GEOLOGIST ON WELL Paul Gunzelman

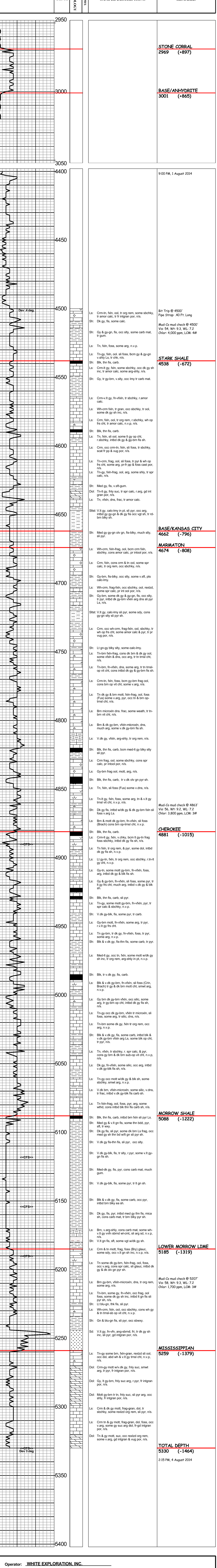
FORMATION NAME TOP LOG TOP SAMPLE DATE
Stone Corral 2971 +895 2969 +897
Base/Anhydrite 3002 +864 3001 +865
Topoka 3987 -121
Heabner Shale 4234 -388
Lansing 4292 -426
Base/Kansas City 4665 -799 4662 -792
Cherokee 4883 -1017 4881 -1015
Morrow Shale 5095 -1229 5088 -1222
Mississippian 5261 -1395 5259 -1393
Total Depth 5332 -1466 5330 -1464

ALL MEASUREMENTS FROM K.B.
CASING RECORD
Conductor None
Surface 8.58" @ 263'
Production None

Table with 4 columns: FORMATION NAME, TOP LOG, TOP SAMPLE DATE, and LOG. Lists geological formations like Stone Corral, Base/Anhydrite, Topoka, Heabner Shale, Lansing, Base/Kansas City, Cherokee, Morrow Shale, Mississippian, and Total Depth with their respective elevations.

REMARKS
API 15-199-20411-00-00
Drilling Fluids: Mud Co/Service Mud, Inc. (Tony Maestas, engineer)
Drill Stem Testing: No Tests
Gas Trailer: No Gas Trailer
Reserve Pit Chlorides: 18,000 PPM

Table with 4 columns: DRILL TIME (MIN/FT), DEPTH, LITHOLOGY, SAMPLE DESCRIPTIONS, and REMARKS.



Operator: WHITE EXPLORATION, INC.
Lease: KREGER # 1
Location: 1783 FSL & 584 FWL SEC. 4 TWSP 13S RGE 42W
County: WALLACE State: KANSAS