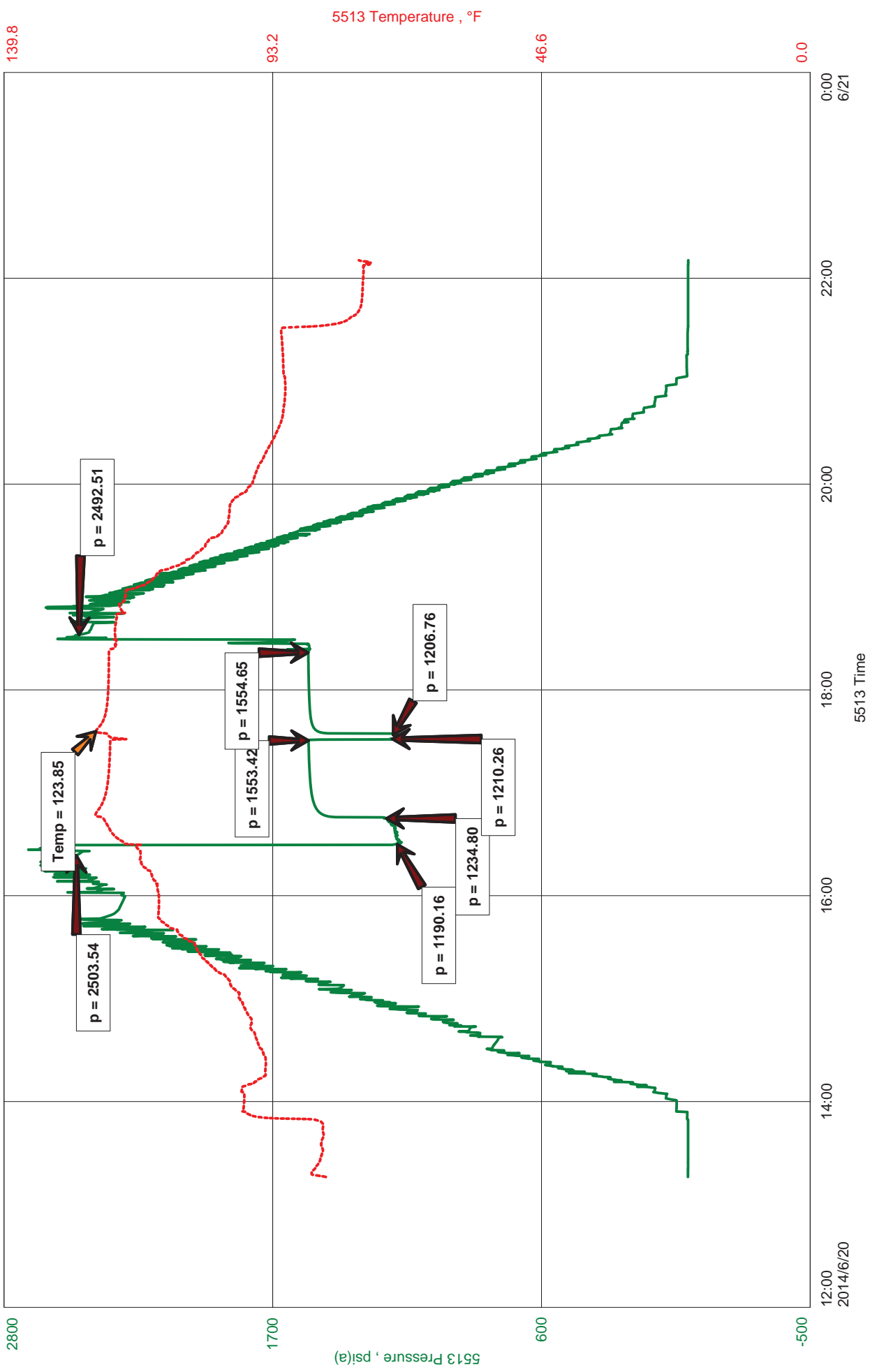
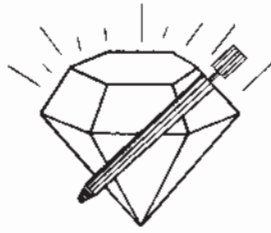


Quail Oil and Gas LC
DST #1 Morrow Sand 5236-5260
Start Test Date: 2014/06/20
Final Test Date: 2014/06/20

#1-23 Leon
Formation: Morrow Sand
Pool: Wildcat
Job Number: K135

#1-23 Leon





DIAMOND TESTING
 P. O. Box 157
HOISINGTON, KANSAS 67544
 (316) 653-7550
GAS VOLUME REPORT

Company Quail Oil and Gas LC Lease & Well No. #1-23 Leon
 Date 6-20-14 Sec. 23 Twp. 32S Rge. 21W Location _____ County Clarke State KS
 Drilling Contractor Duke #6 Formation Morrow Sand DST No. 1
 Remarks: Gas to Surface in 1 Min., Shut in tool 5 min. into second flow, blowing oil vapor towards rig.

INITIAL FLOW

Time O'Clock	Orifice Size	Gauge	CF/D
10	.75 in.	125# in.	1,626
	in.	in.	
	in.	in.	
	in.	in.	
	in.	in.	
	in.	in.	
	in.	in.	
	in.	in.	
	in.	in.	
	in.	in.	
	in.	in.	

FINAL FLOW IW

Time O'Clock	Orifice Size	Gauge	CF/D
	in.	in.	
	in.	in.	
	in.	in.	
	in.	in.	
	in.	in.	
	in.	in.	
	in.	in.	
	in.	in.	
	in.	in.	
	in.	in.	
	in.	in.	

FINAL FLOW



JASON MCLEMORE

CELL # 620-617-0527

General Information

Company Name	Quail Oil and Gas LC	Job Number	K135
Contact	Wray Valentine	Representative	Jason McLemore
Well Name	#1-23 Leon	Well Operator	Quail Oil and Gas LC
Unique Well ID	DST #1 Morrow Sand 5236-5260	Prepared By	Jason McLemore
Surface Location	23-32s-21w-Clarke	Qualified By	Roger Martin
Field	Wildcat	Test Unit	#7
Well Type	Vertical		

Test Information

Test Type	Drill Stem Test	Representative	Jason McLemore
Formation	Morrow Sand	Well Operator	Quail Oil and Gas LC
Well Fluid Type	01 Oil	Report Date	2014/06/20
Test Purpose (AEUB)	Initial Test	Prepared By	Jason McLemore
Start Test Date	2014/06/20	Start Test Time	13:16:00
Final Test Date	2014/06/20	Final Test Time	22:14:00

Test Results

RECOVERED:

60	Gassy Oil, 40% Gas, 60% Oil
635	VSOCMW, 1% Oil, 94% Water, 5% Mud
695	TOTAL FLUID

GRAVITY: 37

**CHLORIDES: 95,000
PH: 7**



DIAMOND TESTING
P.O. Box 157
HOISINGTON, KANSAS 67544
(800) 542-7313
DRILL-STEM TEST TICKET
FILE: 123leondst1

TIME ON: 1:16 PM
TIME OFF: 10:14 PM

Company Quail Oil and Gas LC Lease & Well No. #1-23 Leon
Contractor Duke #6 Charge to Quail Oil and Gas LC
Elevation KB 2044 Formation Morrow Sand Effective Pay _____ Ft. Ticket No. K135
Date 6-20-14 Sec. 23 Twp. _____ 32 S Range _____ 21 W County _____ Clarke State KANSAS
Test Approved By Roger Martin Diamond Representative Jason McLemore

Formation Test No. 1 Interval Tested from 5236 ft. to 5260 ft. Total Depth 5260 ft.
Packer Depth 5231 ft. Size 6 3/4 in. Packer depth _____ ft. Size 6 3/4 in.
Packer Depth 5236 ft. Size 6 3/4 in. Packer depth _____ ft. Size 6 3/4 in.

Depth of Selective Zone Set _____

Top Recorder Depth (Inside) 5217 ft. Recorder Number 5513 Cap. 5000 P.S.I.
Bottom Recorder Depth (Outside) 5218 ft. Recorder Number 5588 Cap. 6000 P.S.I.
Below Straddle Recorder Depth _____ ft. Recorder Number _____ Cap. _____ P.S.I.

Mud Type Chemical Viscosity 63 Drill Collar Length 260 ft. I.D. 2 1/4 in.
Weight 9.1 Water Loss 8.8 cc. Weight Pipe Length 0 ft. I.D. 2 7/8 in.
Chlorides 2900 P.P.M. Drill Pipe Length 4943 ft. I.D. 3 1/2 in.
Jars: Make STERLING Serial Number Jars & Joint Test Tool Length 33 ft. Tool Size 3 1/2-IF in.
Did Well Flow? No Reversed Out NO Anchor Length 24 ft. Size 4 1/2-FH in.
Main Hole Size 7 7/8 Tool Joint Size 4 1/2 XH in. Surface Choke Size 1 in. Bottom Choke Size 5/8 in.

Blow: 1st Open: Strong, BOB in 10 Seconds, Gas to Surface in 1 Min., Gaging Gas, No Blowback
2nd Open: BOB on Open, Shut in After 5 Min., Blowing out Oil Vapor Towards Rig.

Recovered 60 ft. of Gassy Oil, 40% Gas, 60% Oil
Recovered 635 ft. of VSOCMW, 1% Oil, 94% Water, 5% Mud
Recovered 695 ft. of TOTAL FLUID

Recovered _____ ft. of _____	Price Job
Recovered _____ ft. of <u>CHLORIDES: 95,000</u>	Other Charges
Recovered _____ ft. of <u>PH: 7</u>	Insurance
Remarks: <u>GRAVITY: 37</u>	Total

Time Set Packer(s) 4:37 PM A.M. P.M. Time Started Off Bottom 6:30 PM A.M. P.M. Maximum Temperature 124

Initial Hydrostatic Pressure..... (A) 2504 P.S.I.
Initial Flow Period..... Minutes 15 (B) 1190 P.S.I. to (C) 1235 P.S.I.
Initial Closed In Period..... Minutes 45 (D) 1553 P.S.I.
Final Flow Period..... Minutes 5 (E) 1210 P.S.I. to (F) 1207 P.S.I.
Final Closed In Period..... Minutes 48 (G) 1555 P.S.I.
Final Hydrostatic Pressure..... (H) 2493 P.S.I.

Diamond Testing shall not be liable for damages of any kind to the property or personnel of the one for whom a test is made or for any loss suffered or sustained, directly or indirectly, through the use of its equipment, or its statement or opinion concerning the result of any test. Tools lost or damaged in the hole shall be paid for at cost by the party for whom the test is made.