

# Randall Kilian Corporation

Geologist



**Certified Petroleum  
Geologist #3351  
License #224**

3951 Eveningglow Way  
Castle Rock, CO 80104

Phone: 720-733-0420

Cell: 785-635-1349

E-mail: rkgeo53@hotmail.com

## GEOLOGIST'S WELL REPORT

COMPANY STAAB OIL CO. (6037)

WELL Gisela #1

FIELD US 183 West (Wildcat per seismic)

LOCATION (legal) NE SW SW NW

(footages) 2240' FNL & 365' FWL

Section 15 TWP 8S RGE 18W

(Map) 4 $\frac{1}{2}$  mi S & 1 $\frac{1}{2}$  mi W of Stockton, Ks.

COUNTY Rooks STATE Kansas

ELEVATION: 1917' K.B., 1912' G.L.

Depths measured from Kelly Bushing

A. P. I. NUMBER 15-163-24229

GEOLOGY BY Randall Kilian  
Janel Staab

# PERTINENT WELL DATA

CONTRACTOR Shields Drilling Co. (5184)

RIG #2 HYDRAULICS Beth 225 6x14x60

DRILL PIPE 4½" X-H COLLARS 6¼" 311'

CASING: SURFACE 8 5/8" @ 218' w/ 50 sx Common

PRODUCTION 5 ½" @ 3423' w/ 150 sx Common

DRILLING FLUID. COMPANY Mud-Co/Service Mud, Inc.  
DV in Anh. w/ 350 sx  
(Gary Schmidtberger)

TYPE: Chemical

REMARKS: Full service

DRILL STEM TESTS: COMPANY Trilobite Testing Inc.  
(Brett Dickinson)

NUMBER OF TESTS Three (3)

ELECTIC LOGS: COMPANY Pioneer Energy Services

DETAIL (5") 2750' - RTD

TYPE DI, Comp N-D, Micro, Sonic

DRILLING TIME FROM 2800' TO RTD

SAMPLE TIME FROM 2800' TO RTD

SUPERVISION FROM 2800' TO RTD

VERTICAL DEVIATION ½° @ 221', ½° @ 3140',

PLUGGING REPORT 30 sx Rat, 15 sx Mouse

RESERVE PIT 750 bbls., Chl. 37000



# DRILL STEM TESTS

NO	INTERVAL	IFP/TIME	ISIP/TIME	FFP/TIME	FSIP/TIME	IHP/FHP	RECOVERY
1	Tor-C 3045- 3140'	24# 44# 15"	- 60"	52# 124# 60"	812# 90"	1499# 1478#	210' O,C,M, 21%
2	LKc H-I, 3200- 3315'	19# 26# 5"	990# 60"	25# 58# 60"	902# 90"	1633# 1586#	5' Oil 15' H,O,C,Mud 60' SL,O,C,Mud
3	Arb. 3374- 3384'	17# 34# 5"	1080# 60"	40# 126# 60"	984# 90"	1746# 1631#	370' C,M,Oil 2
4							
5							
6							
7							
8							

MUD RECORD							
CHK	DEPTH	WT	VIS	FIL	CHL	YP	
1	2736'						
2	2780'	8.7	90				
3	2840'	8.7	68				
4	2989'	8.8	58	7.8	2k	24	
5	3120'	9.1	52				
6	3140'	9.0	43	8.0	2k	17	
7	3200'	9.1	57				
8	3315'	9.3	59	8.0	3.5k	27	
9	3370'	9.5	51				
10							
11							

Displaced  
LCM 3#  
LCM 2#  
LCM 2#  
LCM 2#  
LCM 1#  
LCM 1# \$7019

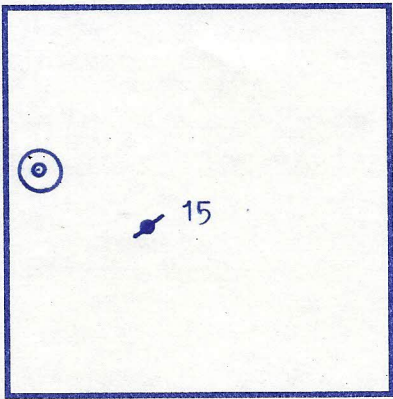
BIT RECORD					
NO	SIZE	MAKE	TYPE	DEPTHOUT	HOURS
1	12 1/4"	Reed	RR	221'	5
2	7 7/8"	Reed	S-52	3140'	63 3/4
3	7 7/8"	Reed	S-52	3425'	17 3/4
4					
5					
6					

# FORMATION TOPS & STRUCTURAL GEOL

R 18 W

REFERRED TO:

- A: FRONTIER OIL CO.  
#1 Hrabe SE SE NE 16
- B: \_\_\_\_\_
- C: \_\_\_\_\_
- D: \_\_\_\_\_
- E: \_\_\_\_\_



STRATIGRAPHIC	SUBJECT WELL			STRUCTURAL POSI			
	MARKERS	SAMPLES	E. LOGS	DATUM	A	B	C

Anhydrite	1306'	1305'	+ 612	+ 604				
Base	1342'	1341'	+ 576					
Topeka	2842'	2842'	- 925	- 926				
Heeb. Sh.	3048'	3050'	-1133	-1136				
Toronto	3072'	3072'	-1155	-1159				
Lansing	3091'	3091'	-1174	-1180				
BKc.	3311'	3312'	-1395	-1402				
Arbuckle	3347'	3346'	-1429	-1450				
TD	3425'	3425'	-1508	-1459				

Pipe strap 1.41' short.

\*Structural position of subject well as compared to refer

7 8

# SUMMARY

The Gisela #1 well was drilled with Shields Drill tools rig #2 beginning 7-9-14 and drilling was co. 7-16-14.

The drill site was located via a 3-D seismic survey. The well ran high structurally to the dry hole by 1-21'.

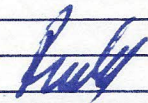
Oil shows were encountered in numerous zones. D were small oil tests which is standard for the

The Arbuckle was encountered 21' high. The top Arbuckle was "tite" Arbuckle dolomite with no. Then 27' in, below a shale bench, oil shows were encountered. After logging, a 10' interval from was tested with DST #3 with positive results.

This is a significant discovery for this area, an oil pay 27-40' into the Arbuckle.

Recommended perfs: Arb. 3373-78', several zone LKc and Toronto which calculate pr

Respectfully,



Randall Kilian

TION

E

ed well.

ing Co.  
mpleted

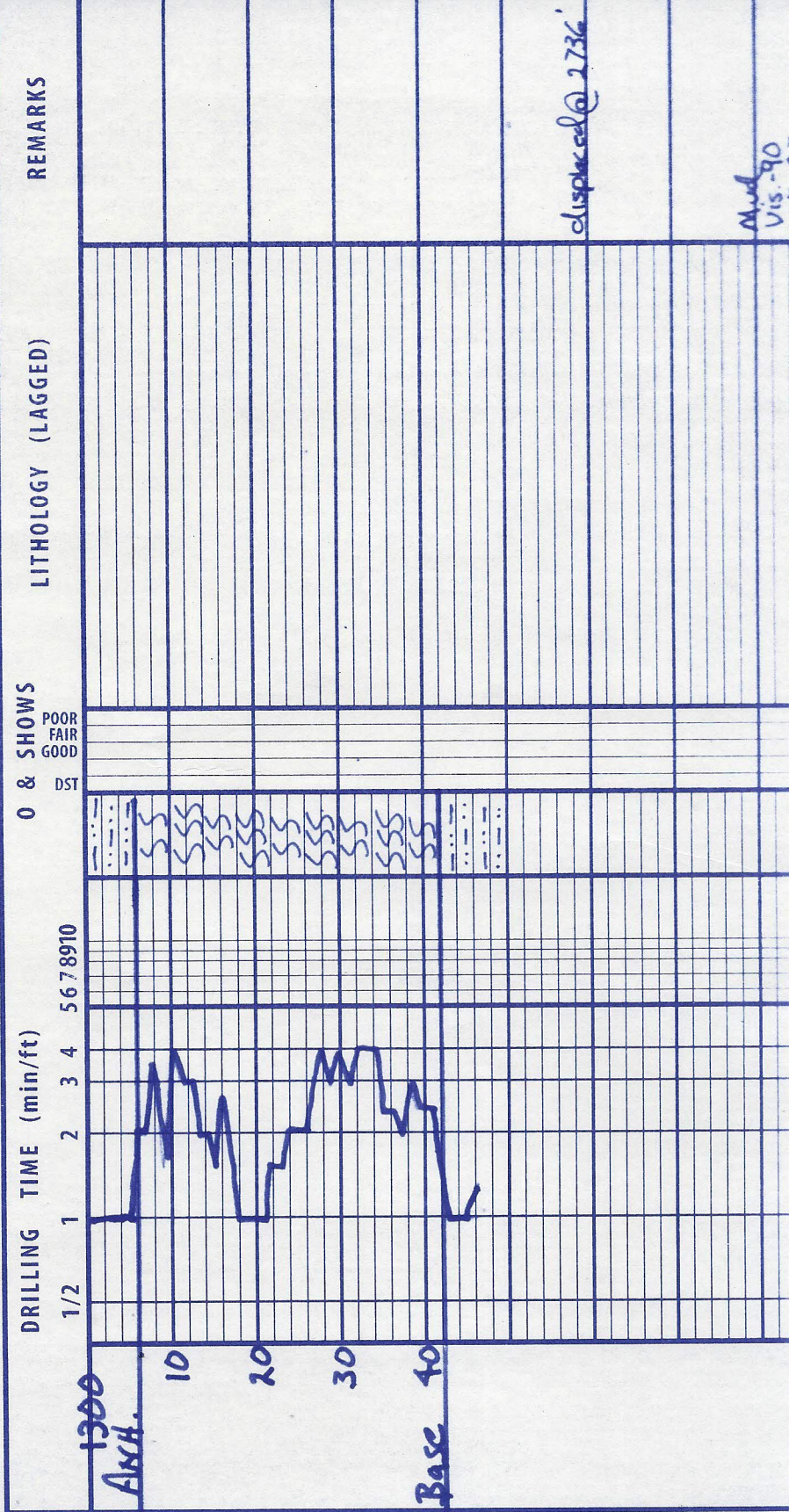
ey.  
rest

ST #1 & #2  
area.

27' of  
oil shows.  
ere  
m 3374--84'

finding

s in the  
productive



wt. of  
L.C.M. - 3#

Mud  
U.S. - 68  
wt. - 8.7

sh. sst. t. gry. brn

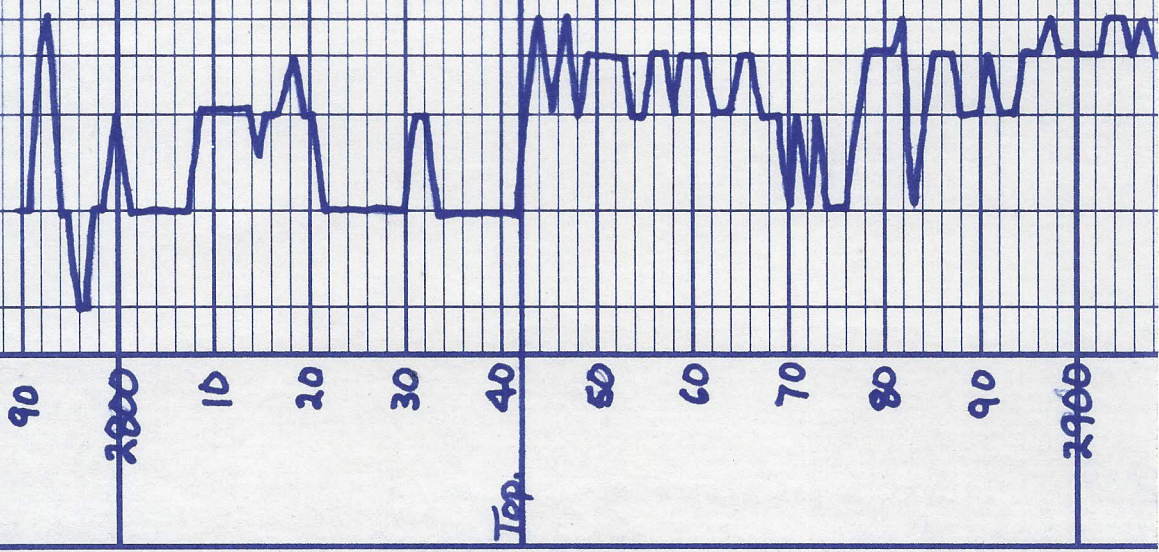
ls. tan. hgy. gry. fn. xln. fossil  
sl. chalky.

ls. a/a.

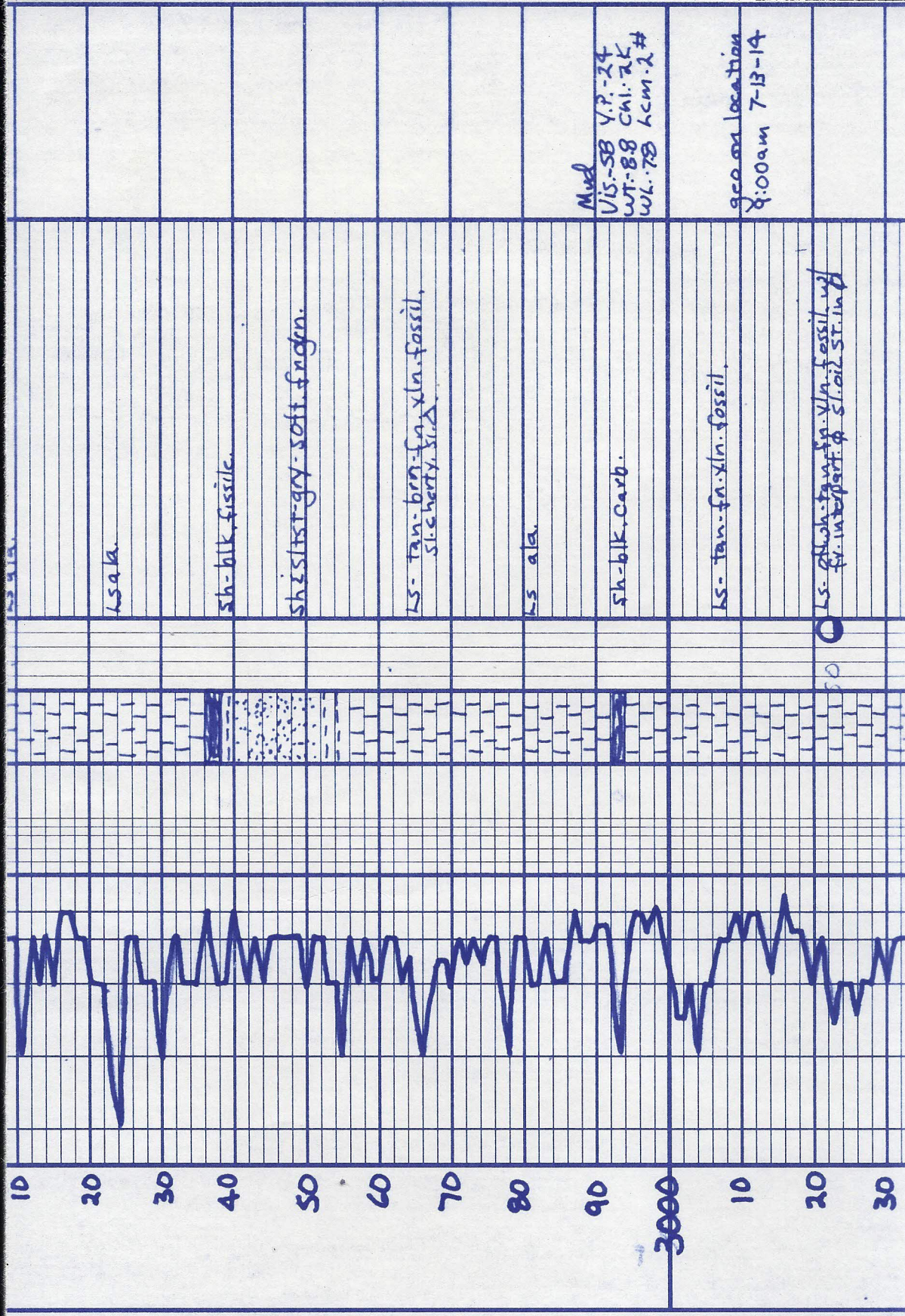
ls. sl. dolo. tan. fn. xln. barren.

sh. dark gry.

ls. tan. gry. fn. xln. fossil.  
sl. chalky.







ls. a. l.

sh-blk. fissile.

sh sltgy. soft. fragm.

ls. tan-brn. fr. xln. fossil.  
sl. cherty. s. d.

ls. a. l.

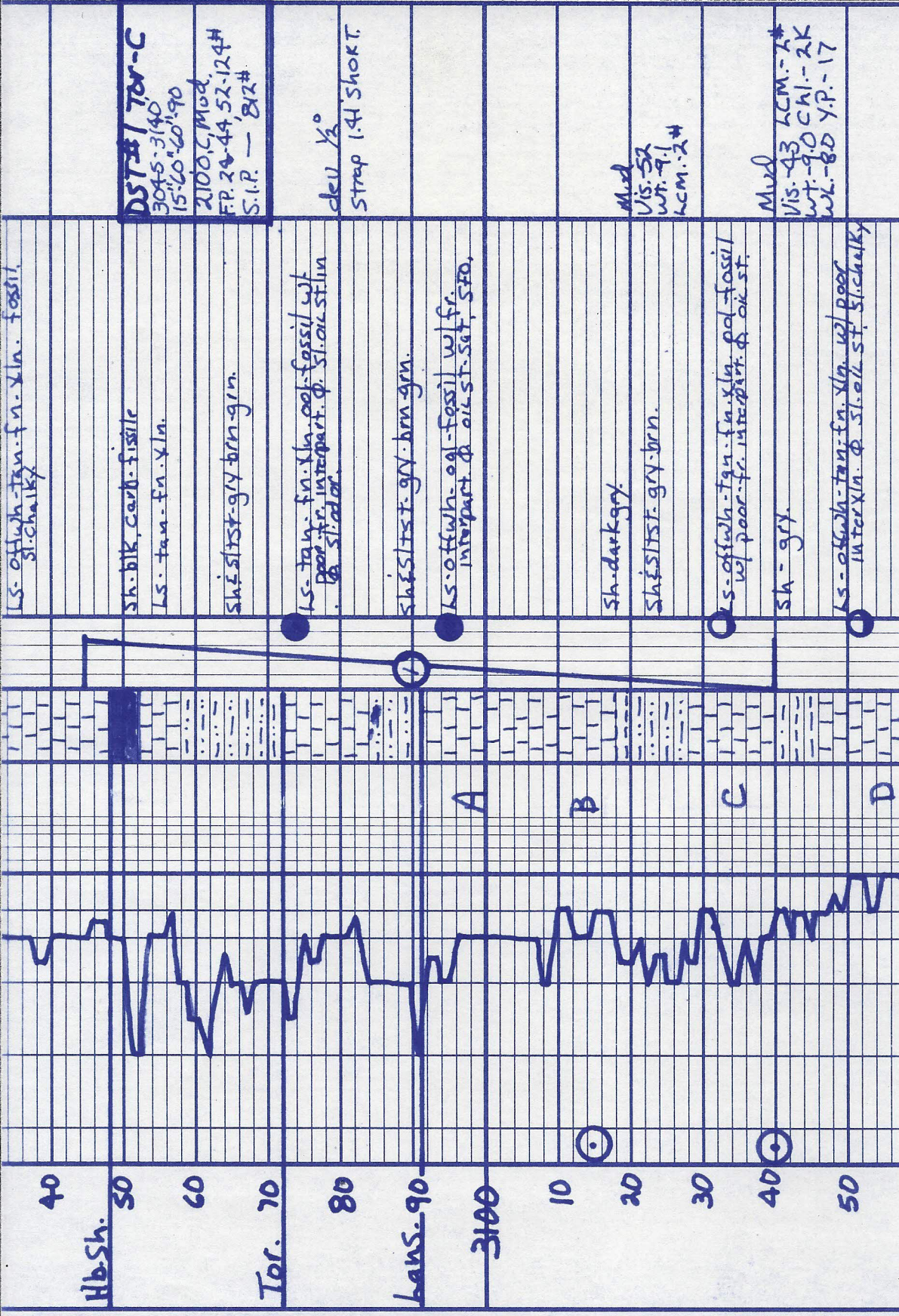
sh-blk. carb.

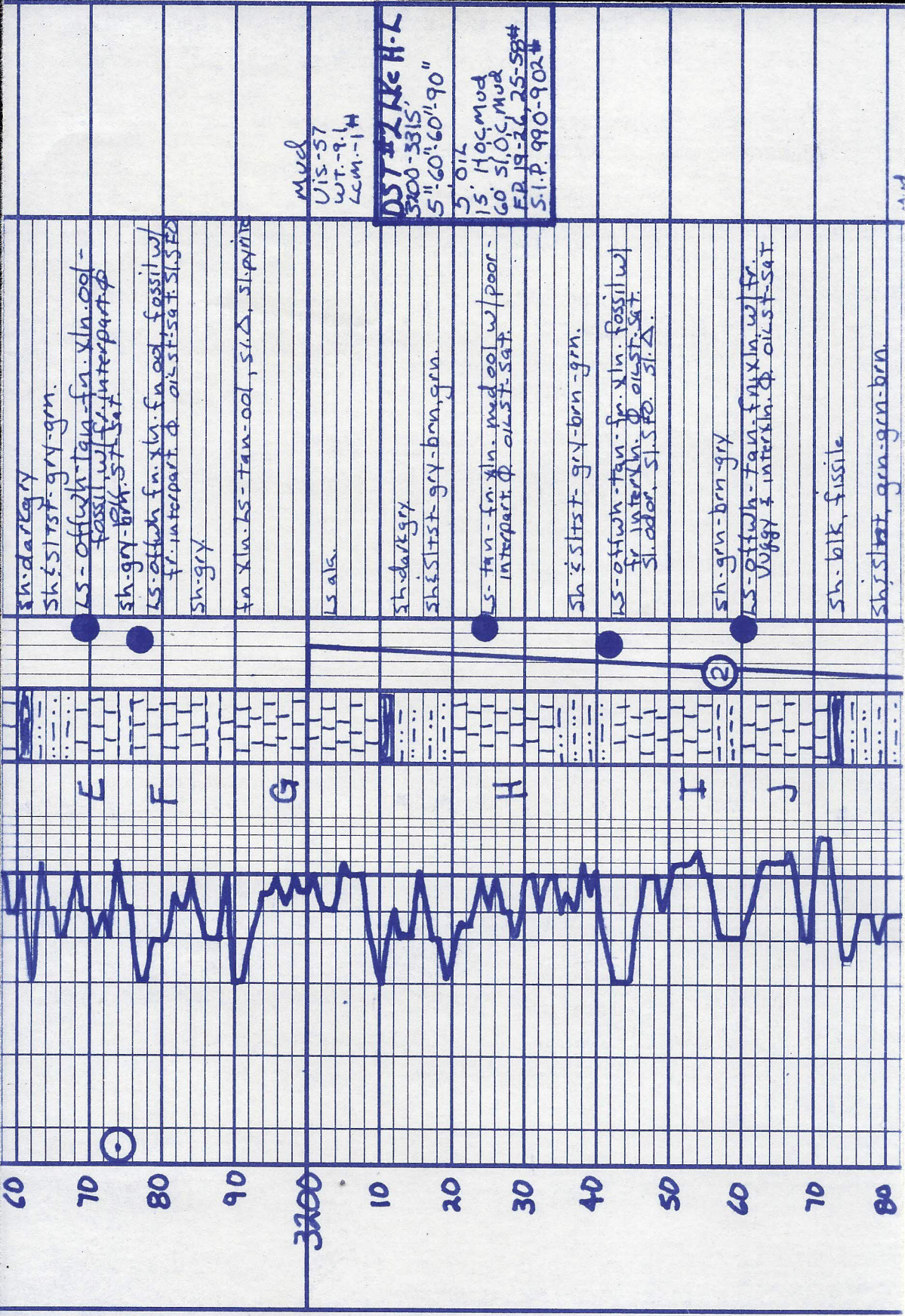
ls. tan-fr. xln. fossil.

ls. sh. tan-fr. xln. fossil. w/ fr. interpart. s. oil st. in p

Mud  
 Vis-SB V.P.-24  
 WT-88 Chi. 2K  
 WL-78 LCM-2 #

geo. loc. location  
 9:00am 7-13-14





sh-dark gray  
sh. siltst. - gry - gm.

ls - offwh. tan. - fn. xln. ool -  
fossil w/ fr. interpart.  $\phi$

sh - gry - blk. siltst.

ls - offwh. fn. xln. fn. ool fossil w/  
fr. interpart.  $\phi$  oolst. sat. siltst.

sh - gry

fn xln. ls - tan - ool, siltst, siltst.

ls als.

sh - dark gry

sh. siltst - gry - brn - gm.

ls - tan - fn. xln. med ool w/ poor -  
interpart.  $\phi$  oolst. sat.

sh. siltst - gry - brn - gm.

ls - offwh - tan - fn. xln. fossil w/  
fr. interpart.  $\phi$  oolst. sat.  
siltst. siltst.

sh - grn - brn - gry

ls - offwh - tan - fn. xln. w/ fr.  
Vogel & interxln.  $\phi$  oolst. sat.

sh - blk, fissile

sh. siltst, gm - grn - brn.

DST # 2, H.C. H-2  
3200-3315  
5" 60" 60" 90"  
5 OIL  
15' Hoc Mud  
60' S.O.C. Mud  
FB 19-26, 25-58#  
S.I.P. 990-902#

Mud  
U.S. 57  
WT. 9.1  
LCM. 14

and

US: 53  
WT: 9.3

LS - off wh - fn. xln. w/ poor fr.  
PP V. 004 & interlin. of 014-51.  
Sat. sl. cherty sl. Δ

sh. blk. carb

LS - tan-grv. fn. xln. med.ool.  
w/ fr. interpart. & ool. st. sat.

sh. & st. grv-brn-grn.

SS - grtz pyrite, med grn. w/ ill  
worked.

LS - tan-brn-grv - fn. xln. fossilif.  
Δ

sh & st. grv-brn-grn, red.

LS - sl. dolo - brn-grv - fn. xln.

Dolo - grv - vfn xln. 'tife'  
barren.

Dolo - grv - fn. xln. 'tife', barren.

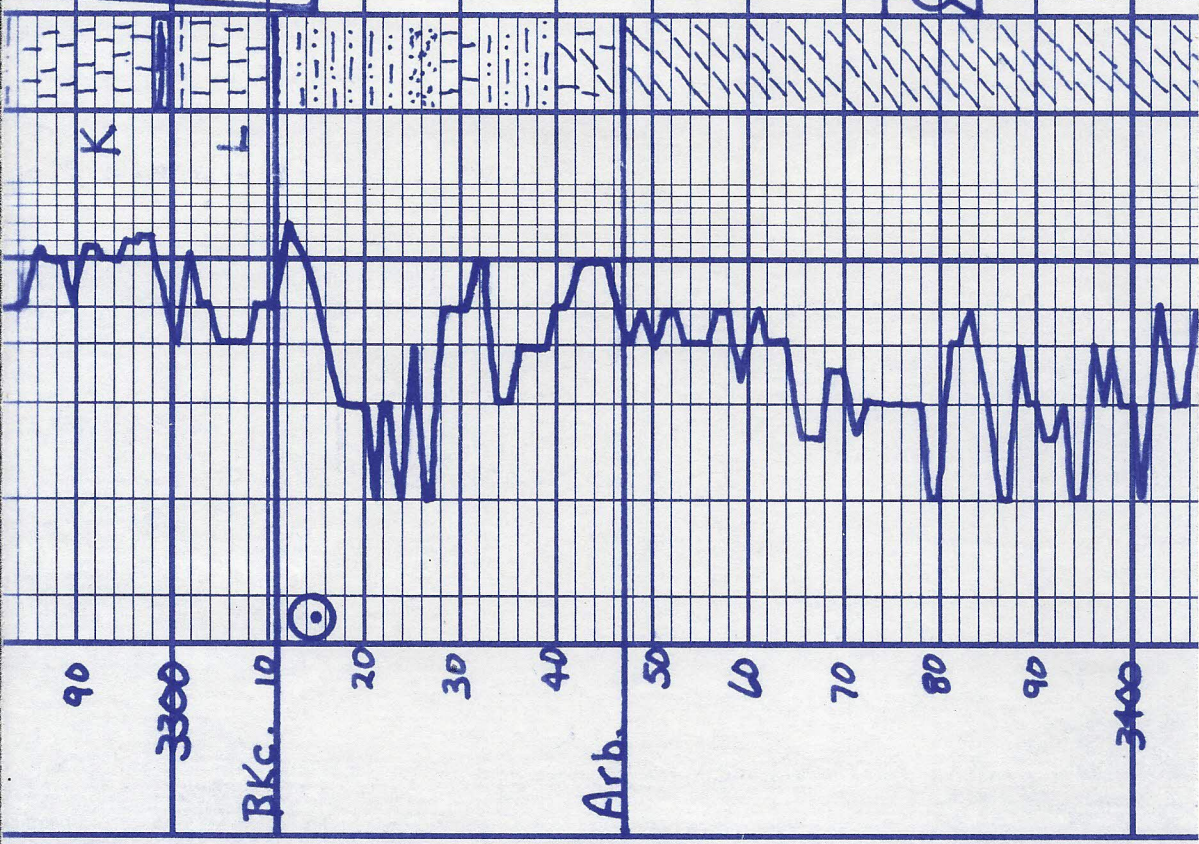
Dolo - grv - tan - fn. xln. sl. v. gray  
ool. st. in B sl. ool.  
sl. odor.

Dolo a.l.g.

Mud  
US: 59 Y.P. - 27  
WT: 9.3 chrt-35k  
WL: 8.0 LCM: 14

Mud  
US: 51  
WT: 9.5

DST #3 Arb.  
3374-84  
5" 60" 60" 90"  
370 MG Oil 28"  
F.P. 17-34 40-126"  
SIP 1080-984#



90  
3300  
BKG. 10  
20  
30  
40  
50  
60  
70  
80  
90  
3400

1 mile  
road  
10%

Date - offsite - tan - mid course  
Kia. St. Δ, mostly barren



T.D. 5:00 PM 7-15-14

T.D.

10  
20

