



CONSOLIDATED
Oil Well Services, LLC

~~REMIT TO~~
Consolidated Oil Well Services, LLC
Dept. 970
P.O. Box 4346
Houston, TX 77210-4346

MAIN OFFICE
P.O. Box 884
Chanute, KS 66720
620/431-9210 • 1-800/467-8676
Fax 620/431-0012

INVOICE

Invoice # 270026

Invoice Date: 07/31/2014 Terms: 15/15/10,n/30

Page 1

LARIO OIL & GAS
P.O. BOX 1093
GARDEN CITY KS 67846
(316)265-5611

KRAUSE 1-23
47652
23-18-35
07/25/2014
KS

AFE 14-148
drilling / surface pipe
8-8-14 LK

| Part Number | Description | Qty | Unit Price | Total |
|-------------|-------------------------|--------|------------|---------|
| 1104S | CLASS "A" CEMENT (SALE) | 240.00 | 18.5500 | 4452.00 |
| 1102 | CALCIUM CHLORIDE (50#) | 677.00 | .9400 | 636.38 |
| 1118B | PREMIUM GEL / BENTONITE | 451.00 | .2700 | 121.77 |

| Sublet Performed | Description | Total |
|------------------|---------------------------|---------|
| 9996-130 | CEMENT MATERIAL DISCOUNT | -781.52 |
| 9995-130 | CEMENT EQUIPMENT DISCOUNT | -359.93 |

| Description | Hours | Unit Price | Total |
|---------------------------------|-------|------------|---------|
| 693 CEMENT PUMP (SURFACE) | 1.00 | 1150.00 | 1150.00 |
| 693 EQUIPMENT MILEAGE (ONE WAY) | 50.00 | 5.25 | 262.50 |
| 693 TON MILEAGE DELIVERY | 1.00 | 987.00 | 987.00 |

Handwritten signature and initials

Amount Due 8034.28 if paid after 08/10/2014

| | | | | | | | |
|--------|----------|-----------|-----|---------|---------|----|---------|
| Parts: | 5210.15 | Freight: | .00 | Tax: | 360.94 | AR | 6829.14 |
| Labor: | .00 | Misc: | .00 | Total: | 6829.14 | | |
| Sublt: | -1141.45 | Supplies: | .00 | Change: | .00 | | |

Signed _____ Date _____



CONSOLIDATED
Oil Well Services, LLC

270026

TICKET NUMBER 47652
LOCATION Oakley, Ks.
FOREMAN Danner

PO Box 884, Chanute, KS 66720
620-431-9210 or 800-467-8676

FIELD TICKET & TREATMENT REPORT
CEMENT

| DATE | CUSTOMER # | WELL NAME & NUMBER | SECTION | TOWNSHIP | RANGE | COUNTY |
|-----------------------------|------------|--------------------|----------|----------|-------|---------|
| 7/25/14 | 4793 | Krause 1-23 | 23 | 18 | 35 | Wichita |
| CUSTOMER Lario Oil & Gas | | | Ks. | | | |
| MAILING ADDRESS | | | Modoc | | | |
| CITY | | | WTO | | | |
| STATE | | | Rd 24 | | | |
| ZIP CODE | | | S+W into | | | |
| TRUCK # | DRIVER | TRUCK # | DRIVER | | | |
| 731 | Cory | | | | | |
| 693 | Robert | | | | | |

JOB TYPE Surface HOLE SIZE 12 1/4 HOLE DEPTH 374 CASING SIZE & WEIGHT 8 5/8, 24'
 CASING DEPTH 371 DRILL PIPE _____ TUBING _____ OTHER _____
 SLURRY WEIGHT _____ SLURRY VOL _____ WATER gal/sk _____ CEMENT LEFT in CASING 20'
 DISPLACEMENT 22.35 DISPLACEMENT PSI _____ MIX PSI _____ RATE _____

REMARKS: Safety meeting Rig upon Southwind #70 Run Casing Break
Circulation With Rig Pump Hookup To Pump Truck mix 240 SKS Com
3"b CC 206 Gal Wash up Pump & Lines Displace 22.35 bbl water
Shut in Rig Down
Cement Did Circulate

Approx 5 bbl To Pit

Thanks Danner & Crew

| ACCOUNT CODE | QUANTITY or UNITS | DESCRIPTION of SERVICES or PRODUCT | UNIT PRICE | TOTAL |
|--------------|-------------------|------------------------------------|-----------------|-------------|
| 54015 | 1 | PUMP CHARGE | \$1150.00 | \$1150.00 ✓ |
| 5406 | 50 | MILEAGE | \$5.25 | \$262.50 ✓ |
| 5407A | 11.28 | Ton Mileage Delivery | \$1.75 | \$987.00 ✓ |
| 11045 | 240 SKS | Class "A" Cement | \$18.55 | \$4452.00 ✓ |
| 1102 | 677 * | Calcium Chloride | \$.94 | \$636.38 ✓ |
| 1118B | 451 * | Bentonite | \$.27 | \$121.77 ✓ |
| | | | SubTotal | \$7609.65 |
| | | | Less 15% | \$1141.45 ✓ |
| | | | SubTotal | \$6468.20 |
| | | | SALES TAX | 360.94 ✓ |
| | | | ESTIMATED TOTAL | 6829.14 ✓ |

AUTHORIZATION Sam Steg TITLE _____ DATE _____

I acknowledge that the payment terms, unless specifically amended in writing on the front of the form or in the customer's account records, at our office, and conditions of service on the back of this form are in effect for services identified on this form.



INVOICE

PO Box 93999
Southlake, TX 76092

Invoice Number: 144883
Invoice Date: Aug 6, 2014
Page: 1

Voice: (817) 546-7282
Fax: (817) 246-3361

| |
|--|
| Bill To: |
| Lario Oil & Gas Co. Lario Oil & Gas Co. P.O. Box 1093 Garden City, KS 67846 |

| Customer ID | Field Ticket # | Payment Terms | |
|--------------|----------------|---------------|----------|
| Lario | 64074 | Net 30 Days | |
| Job Location | Camp Location | Service Date | Due Date |
| KS1-03 | Oakley | Aug 6, 2014 | 9/5/14 |

| Quantity | Item | Description | Unit Price | Amount |
|----------|--------------------|-----------------------|------------|----------|
| 1.00 | WELL NAME | Krause #1-23 | | |
| 280.00 | CEMENT MATERIALS | 60/40 4% Gel Blend | 18.92 | 5,297.60 |
| 70.00 | CEMENT MATERIALS | Flo Seal | 2.97 | 207.90 |
| 300.72 | CEMENT SERVICE | Cubic Feet Charge | 2.48 | 745.79 |
| 753.60 | CEMENT SERVICE | Ton Mileage Charge | 2.75 | 2,072.40 |
| 1.00 | CEMENT SERVICE | Plug to Abandon | 2,483.59 | 2,483.59 |
| 60.00 | CEMENT SERVICE | Pump Truck Mileage | 7.70 | 462.00 |
| 60.00 | CEMENT SERVICE | Light Vehicle Mileage | 4.40 | 264.00 |
| 1.00 | EQUIPMENT OPERATOR | Paul Beaver | | |
| 1.00 | OPERATOR ASSISTANT | Adam Flipse | | |

drilling
AFE 14-148
8-18-14 LK

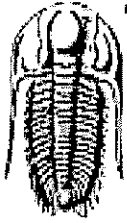
AUG 20 2014

ALL PRICES ARE NET, PAYABLE
30 DAYS FOLLOWING DATE OF
INVOICE. 1 1/2% CHARGED
THEREAFTER. IF ACCOUNT IS
CURRENT, TAKE DISCOUNT OF

\$ 3,459.98

ONLY IF PAID ON OR BEFORE
Sep 5, 2014

| | |
|------------------------|------------------|
| Subtotal | 11,533.28 |
| Sales Tax | 939.96 |
| Total Invoice Amount | 12,473.24 |
| Payment/Credit Applied | |
| TOTAL | 12,473.24 |



**TRILOBITE
TESTING, INC**

DRILL STEM TEST REPORT

Lario Oil & Gas Company

23-18s-35w Wichita Co. KS

301 S Market St.
Wichita KS. 67202

Krause # 1-23

Job Ticket: 57708

DST#: 1

ATTN: Steve Davis

Test Start: 2014.07.30 @ 16:34:00

GENERAL INFORMATION:

Formation: LKC "D"

Deviated: No Whipstock: ft (KB)

Time Tool Opened: 18:41:55

Time Test Ended: 00:11:54

Test Type: Conventional Bottom Hole (Initial)

Tester: Will MacLean

Unit No:

Interval: 4155.00 ft (KB) To 4175.00 ft (KB) (TVD)

Total Depth: 4175.00 ft (KB) (TVD)

Hole Diameter: 7.88 inches Hole Condition: Good

Reference Elevations: 3186.00 ft (KB)

3175.00 ft (CF)

KB to GR/CF: 11.00 ft

Serial #: 8674 Inside

Press@RunDepth: 124.57 psig @ 4156.00 ft (KB)

Start Date: 2014.07.30

End Date:

2014.07.31

Start Time: 16:34:00

End Time:

00:11:54

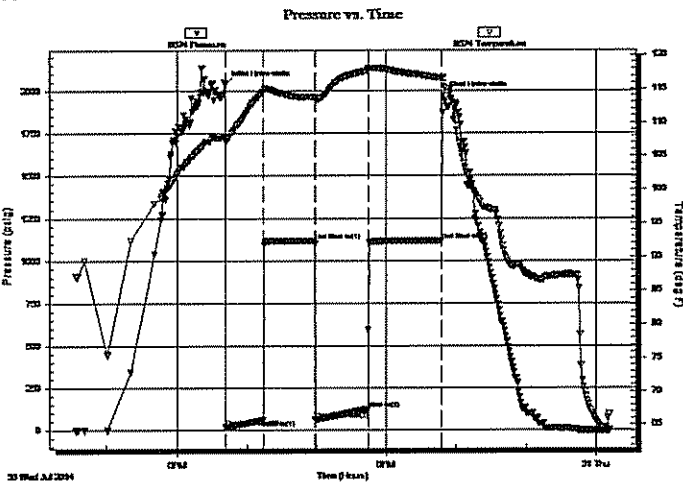
Capacity: 8000.00 psig

Last Calib.: 2014.07.31

Time On Blm: 2014.07.30 @ 18:41:40

Time Off Blm: 2014.07.30 @ 21:49:09

TEST COMMENT: IF- Weak Surface Blow Built to 7 3/4"
IS- No Blow
FF- Weak Surface Blow Built to 6 1/2"
FS- No Blow



PRESSURE SUMMARY

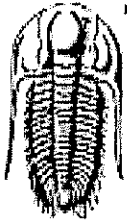
| Time (Min.) | Pressure (psig) | Temp (deg F) | Annotation |
|-------------|-----------------|--------------|----------------------|
| 0 | 2041.06 | 107.92 | Initial Hydro-static |
| 1 | 18.77 | 107.08 | Open To Flow (1) |
| 32 | 60.73 | 114.50 | Shut-In(1) |
| 77 | 1115.60 | 113.76 | End Shut-In(1) |
| 78 | 61.81 | 113.30 | Open To Flow (2) |
| 123 | 124.57 | 117.70 | Shut-In(2) |
| 186 | 1114.67 | 116.59 | End Shut-In(2) |
| 188 | 1974.44 | 115.87 | Final Hydro-static |

Recovery

| Length (ft) | Description | Volume (bbl) |
|-------------|----------------------------------|--------------|
| 124.00 | MCW 15%w 85%w with Oil Spots | 1.74 |
| 62.00 | MCW 24%w 76%w with a Skim of Oil | 0.87 |
| 57.00 | WCM 47%w 53%w with a Skim of Oil | 0.80 |
| 1.00 | 100%oil | 0.01 |

Gas Rates

| | Choke (Inches) | Pressure (psig) | Gas Rate (Mcf/d) |
|--|----------------|-----------------|------------------|
|--|----------------|-----------------|------------------|



**TRILOBITE
TESTING, INC**

DRILL STEM TEST REPORT

FLUID SUMMARY

Lario Oil & Gas Company

23-18s-35w Wichita Co. KS

301 S Market St.
Wichita KS. 67202

Krause # 1-23

Job Ticket: 57708

DST#: 1

ATTN: Steve Davis

Test Start: 2014.07.30 @ 16:34:00

Mud and Cushion Information

Mud Type: Gel Chem

Cushion Type:

Oil API:

deg API

Mud Weight: 9.00 lb/gal

Cushion Length:

ft

Water Salinity:

26000 ppm

Viscosity: 46.00 sec/qt

Cushion Volume:

bbf

Water Loss: 8.77 in³

Gas Cushion Type:

Resistivity: ohm.m

Gas Cushion Pressure:

psig

Salinity: 3400.00 ppm

Filter Cake: 1.00 inches

Recovery Information

Recovery Table

| Length ft | Description | Volume bbf |
|--------------|--|---------------|
| 124.00 | MCW 15%m 85%w with Oil Spots | 1.739 |
| 62.00 | MCW 24%m 76%w with a Skim of Oil on To | 0.870 |
| 57.00 | WCM 47%w 53%m with a Skim of Oil on T | 0.800 |
| 1.00 | 100%oil | 0.014 |

Total Length: 244.00 ft Total Volume: 3.423 bbf

Num Fluid Samples: 0

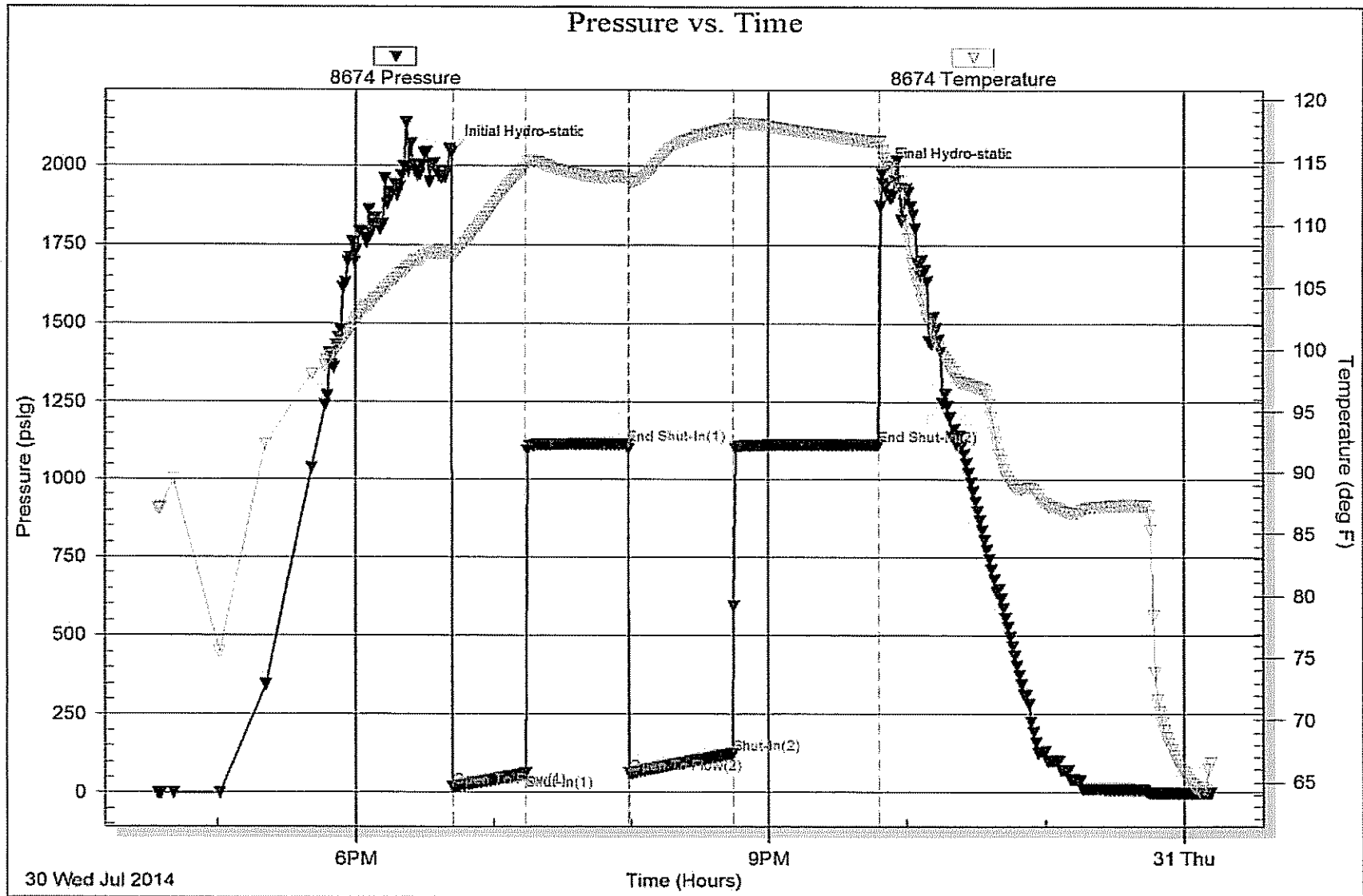
Num Gas Bombs: 0

Serial #:

Laboratory Name:

Laboratory Location:

Recovery Comments: RW is .267 @ 68f = 26000





TRILOBITE TESTING, INC.

DRILL STEM TEST REPORT

Lario Oil & Gas Company

23-18s-35w Wichita Co. KS

301 S Market St.
Wichita KS. 67202

Krause # 1-23

Job Ticket: 57709

DST#: 2

ATTN: Steve Davis

Test Start: 2014.07.31 @ 13:56:00

GENERAL INFORMATION:

Formation: LKC "H"

Deviated: No Whipstock: ft (KB)

Time Tool Opened: 15:43:55

Time Test Ended: 21:04:54

Test Type: Conventional Bottom Hole (Reset)

Tester: Will MacLean

Unit No: 72

Interval: 4262.00 ft (KB) To 4287.00 ft (KB) (TVD)

Total Depth: 4287.00 ft (KB) (TVD)

Hole Diameter: 7.88 inches Hole Condition: Good

Reference Elevations: 3186.00 ft (KB)

3175.00 ft (CF)

KB to GR/CF: 11.00 ft

Serial #: 8674 Inside

Press@RunDepth: 437.57 psig @ 4263.00 ft (KB)

Start Date: 2014.07.31

End Date: 2014.07.31

Start Time: 13:56:00

End Time: 21:04:54

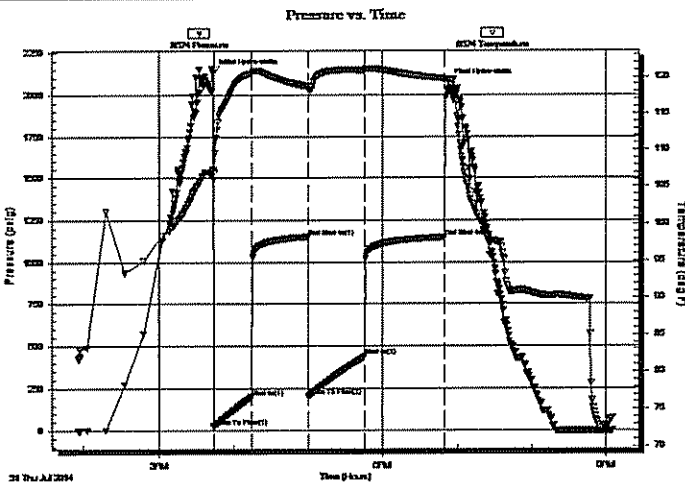
Capacity: 8000.00 psig

Last Calib.: 2014.07.31

Time On Blm: 2014.07.31 @ 15:43:40

Time Off Blm: 2014.07.31 @ 18:52:39

TEST COMMENT: IF- Weak Surface Blow Built to BOB in 9 3/4min
 ISI- No Blow
 FF- Weak Surface Blow Built to BOB in 11 1/2min
 FS- No Blow



PRESSURE SUMMARY

| Time (Min.) | Pressure (psig) | Temp (deg F) | Annotation |
|-------------|-----------------|--------------|----------------------|
| 0 | 2136.36 | 107.34 | Initial Hydro-static |
| 1 | 22.65 | 105.95 | Open To Flow (1) |
| 31 | 200.50 | 120.49 | Shut-In(1) |
| 77 | 1151.59 | 118.71 | End Shut-In(1) |
| 77 | 204.00 | 118.28 | Open To Flow (2) |
| 122 | 437.57 | 120.90 | Shut-In(2) |
| 186 | 1148.47 | 119.73 | End Shut-In(2) |
| 189 | 2073.54 | 119.39 | Final Hydro-static |

Recovery

| Length (ft) | Description | Volume (bbl) |
|-------------|---------------------------------------|--------------|
| 558.00 | MCW 9% _m 91% _w | 7.83 |
| 248.00 | MCW 33% _m 67% _w | 3.48 |
| 124.00 | WCM 39% _w 61% _m | 1.74 |
| | | |
| | | |

Gas Rates

| | Choke (inches) | Pressure (psig) | Gas Rate (Mcf/d) |
|--|----------------|-----------------|------------------|
| | | | |

* Recovery from multiple tests



TRILOBITE
TESTING, INC.

DRILL STEM TEST REPORT

FLUID SUMMARY

Lario Oil & Gas Company

23-18s-35w Wichita Co. KS

301 S Market St.
Wichita KS. 67202

Krause # 1-23

Job Ticket: 57709

DST#: 2

ATTN: Steve Davis

Test Start: 2014.07.31 @ 13:56:00

Mud and Cushion Information

Mud Type: Gel Chem

Cushion Type:

Oil API:

deg API

Mud Weight: 9.00 lb/gal

Cushion Length:

ft

Water Salinity:

24500 ppm

Viscosity: 55.00 sec/qt

Cushion Volume:

bbf

Water Loss: 9.59 in³

Gas Cushion Type:

Resistivity: ohm.m

Gas Cushion Pressure:

psig

Salinity: 8000.00 ppm

Filter Cake: 1.00 inches

Recovery Information

Recovery Table

| Length ft | Description | Volume bbf |
|--------------|---------------|---------------|
| 558.00 | MCW 9%m 91%w | 7.827 |
| 248.00 | MCW 33%m 67%w | 3.479 |
| 124.00 | WCM 39%w 61%m | 1.739 |

Total Length: 930.00 ft Total Volume: 13.045 bbf

Num Fluid Samples: 0

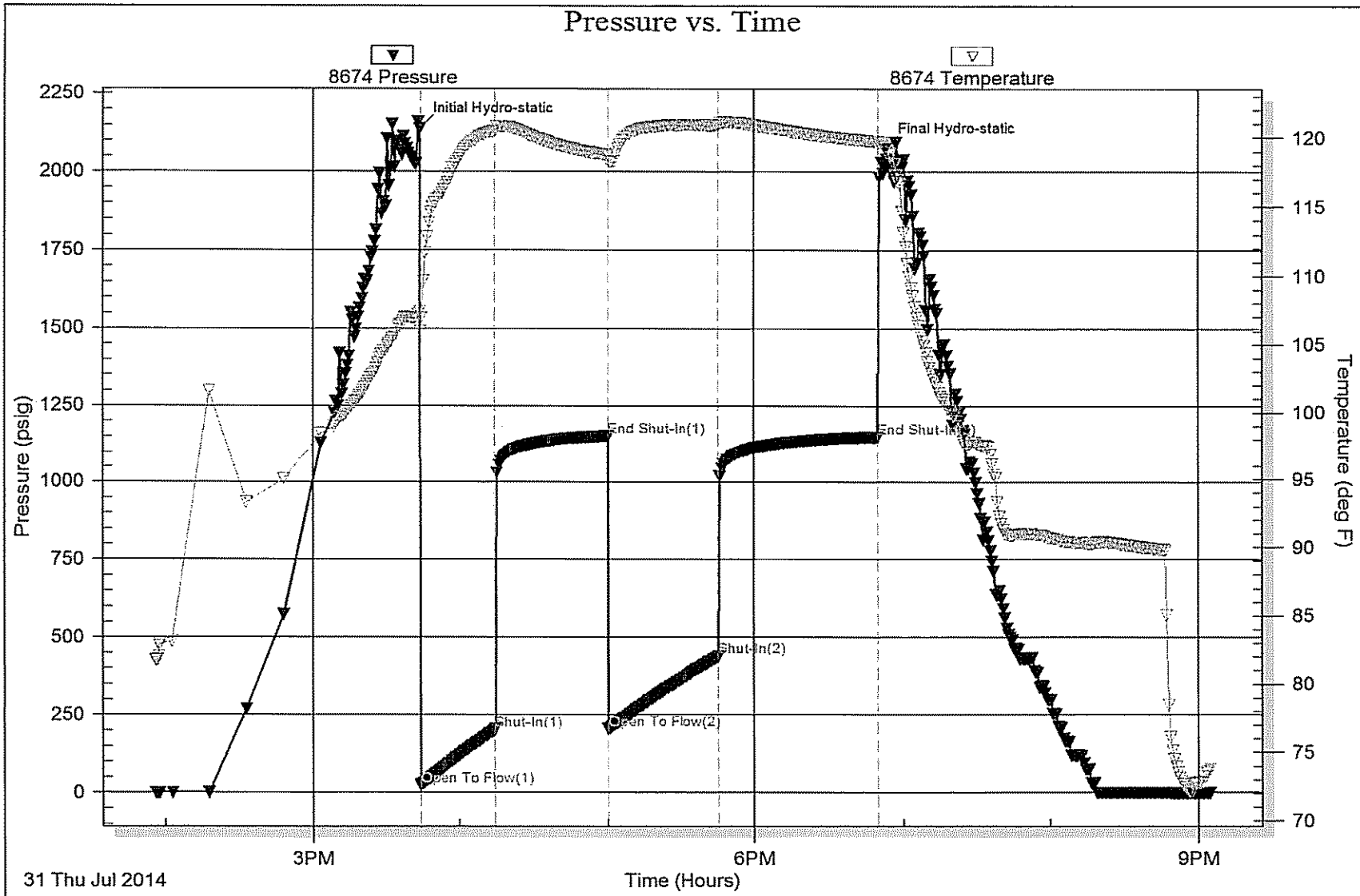
Num Gas Bombs: 0

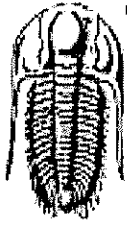
Serial #:

Laboratory Name:

Laboratory Location:

Recovery Comments: RW is .245 @ 78f = 24500





**TRILOBITE
TESTING, INC**

DRILL STEM TEST REPORT

Lario Oil & Gas Company

23-18s-35w Wichita Co. KS

301 S Market St.
Wichita KS. 67202

Krause # 1-23

Job Ticket: 57710

DST#: 3

ATTN: Steve Davis

Test Start: 2014.08.01 @ 07:48:00

GENERAL INFORMATION:

Formation: LKC "1"

Deviated: No Whipstock: ft (KB)

Time Tool Opened: 09:48:40

Time Test Ended: 14:30:54

Test Type: Conventional Bottom Hole (Reset)

Tester: Will MacLean

Unit No:

Interval: 4302.00 ft (KB) To 4332.00 ft (KB) (TVD)

Total Depth: 4332.00 ft (KB) (TVD)

Hole Diameter: 7.88 inches Hole Condition: Good

Reference Elevations: 3186.00 ft (KB)

3175.00 ft (CF)

KB to GR/CF: 11.00 ft

Serial #: 8674 Inside

Press@RunDepth: 44.12 psig @ 4303.00 ft (KB)

Start Date: 2014.08.01

End Date: 2014.08.01

Start Time: 07:48:00

End Time: 14:30:54

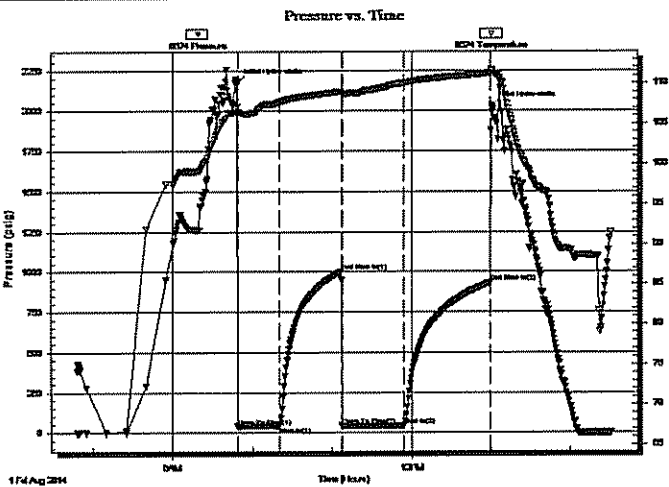
Capacity: 8000.00 psig

Last Calib.: 2014.08.01

Time On Btm: 2014.08.01 @ 09:48:25

Time Off Btm: 2014.08.01 @ 13:00:39

TEST COMMENT: IF- Weak Surface Blow
IS- No Blow
FF- No Blow
FS- No Blow



PRESSURE SUMMARY

| Time (Min.) | Pressure (psig) | Temp (deg F) | Annotation |
|-------------|-----------------|--------------|----------------------|
| 0 | 2176.11 | 107.07 | Initial Hydro-static |
| 1 | 39.00 | 106.23 | Open To Flow (1) |
| 32 | 40.21 | 107.65 | Shut-In(1) |
| 79 | 1001.48 | 108.99 | End Shut-In(1) |
| 79 | 43.12 | 108.59 | Open To Flow (2) |
| 126 | 44.12 | 110.04 | Shut-In(2) |
| 191 | 931.38 | 111.27 | End Shut-In(2) |
| 193 | 2033.59 | 111.32 | Final Hydro-static |

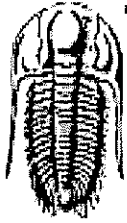
Recovery

| Length (ft) | Description | Volume (bbl) |
|-------------|---------------------------------------|--------------|
| 60.00 | 100% mud with a Few Oil Spots in Tool | 0.84 |
| | | |
| | | |
| | | |
| | | |

* Recovery from multiple tests

Gas Rates

| | Choke (Inches) | Pressure (psig) | Gas Rate (Mcf/d) |
|--|----------------|-----------------|------------------|
| | | | |



**TRILOBITE
TESTING, INC**

DRILL STEM TEST REPORT

FLUID SUMMARY

Lario Oil & Gas Company

23-18s-35w Wichita Co. KS

301 S Market St.
Wichita KS. 67202

Krause # 1-23

Job Ticket: 57710

DST#: 3

ATTN: Steve Davis

Test Start: 2014.08.01 @ 07:48:00

Mud and Cushion Information

Mud Type: Gel Chem

Cushion Type:

Oil API:

deg API

Mud Weight: 9.00 lb/gal

Cushion Length:

ft

Water Salinity:

ppm

Viscosity: 70.00 sec/qt

Cushion Volume:

bbl

Water Loss: 10.38 in³

Gas Cushion Type:

Resistivity: ohm.m

Gas Cushion Pressure:

psig

Salinity: 9500.00 ppm

Filter Cake: 1.00 inches

Recovery Information

Recovery Table

| Length ft | Description | Volume bbl |
|--------------|---------------------------------------|---------------|
| 60.00 | 100% mud with a Few Oil Spots in Tool | 0.842 |

Total Length: 60.00 ft

Total Volume: 0.842 bbl

Num Fluid Samples: 0

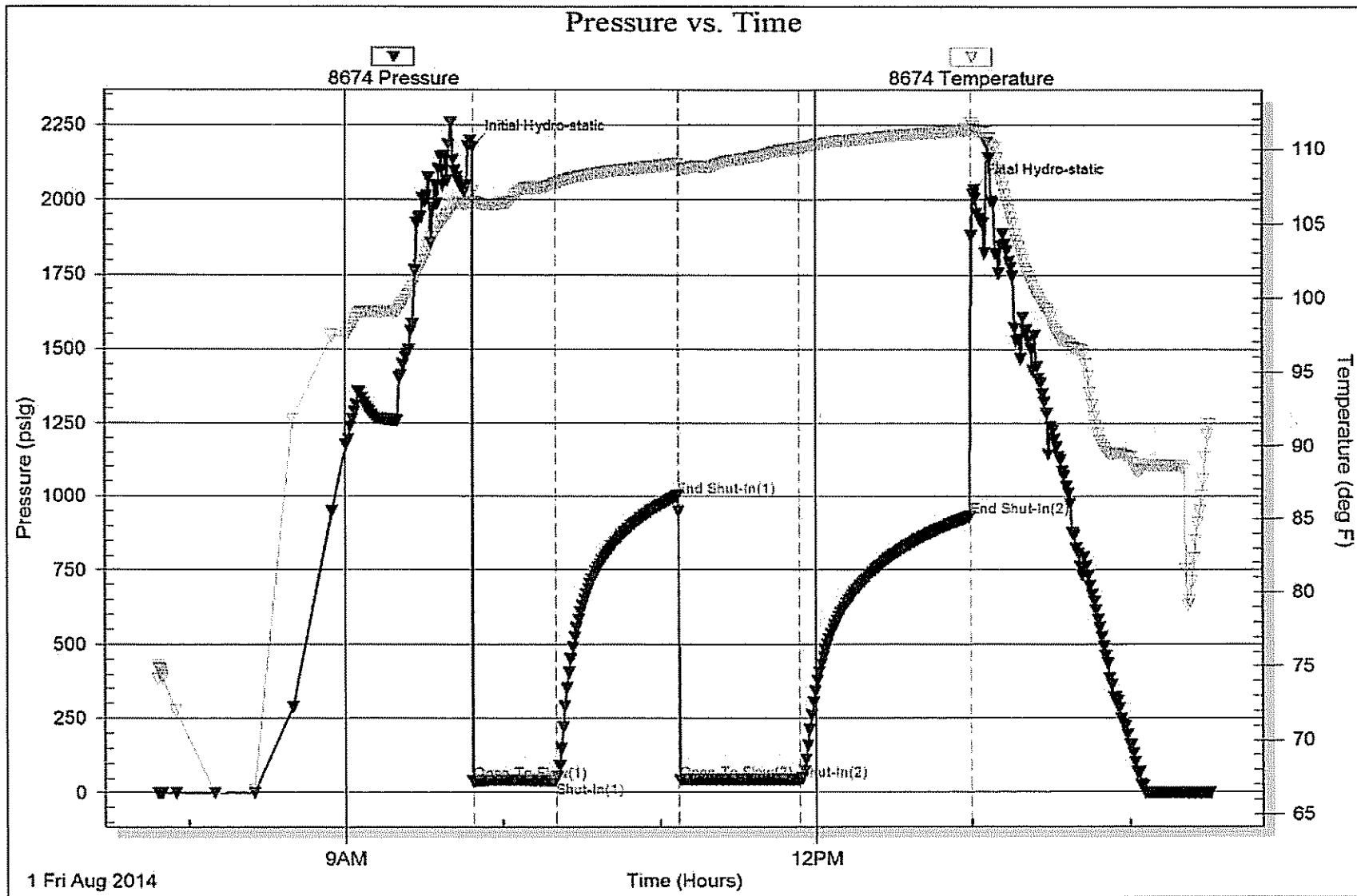
Num Gas Bombs: 0

Serial #:

Laboratory Name:

Laboratory Location:

Recovery Comments:





TRILOBITE TESTING, INC.

DRILL STEM TEST REPORT

Lario Oil & Gas Company

23-18s-35w Wichita Co. KS

301 S Market St.
Wichita KS. 67202

Krause # 1-23

Job Ticket: 57711

DST#: 4

ATTN: Steve Davis

Test Start: 2014.08.02 @ 18:52:00

GENERAL INFORMATION:

Formation: **Marmanton "A- B"**

Deviated: No Whipstock: ft (KB)

Time Tool Opened: 20:37:40

Time Test Ended: 01:45:54

Test Type: Conventional Bottom Hole (Reset)

Tester: Will MacLean

Unit No:

Interval: **4518.00 ft (KB) To 4580.00 ft (KB) (TVD)**

Total Depth: **4580.00 ft (KB) (TVD)**

Hole Diameter: **7.88 inches** Hole Condition: Good

Reference Elevations: **3186.00 ft (KB)**

3175.00 ft (CF)

KB to GR/CF: **11.00 ft**

Serial #: 8674 Inside

Press@RunDepth: **146.89 psig @ 4519.00 ft (KB)**

Start Date: **2014.08.02**

End Date:

2014.08.03

Start Time: **18:52:00**

End Time:

01:45:54

Capacity: **8000.00 psig**

Last Calib.: **2014.08.03**

Time On Btm: **2014.08.02 @ 20:37:25**

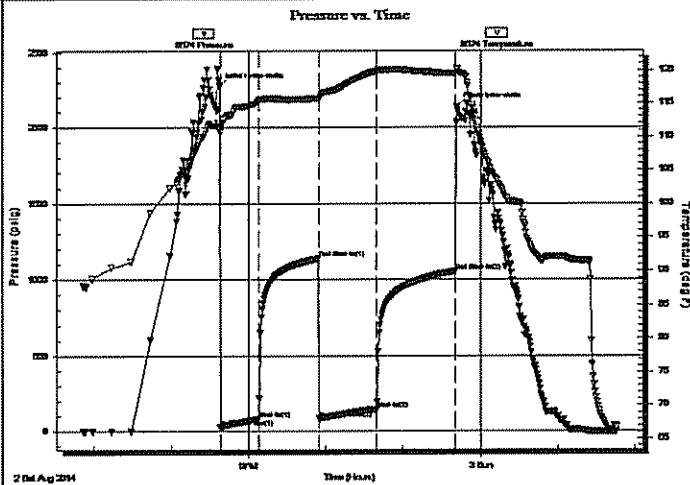
Time Off Btm: **2014.08.02 @ 23:41:39**

TEST COMMENT: IF- Weak Surface Blow Built to 5 3/4"

IS- No Blow

FF- Weak Surface Blow Built to 1 3/4"

FS- No Blow



PRESSURE SUMMARY

| Time (Min.) | Pressure (psig) | Temp (deg F) | Annotation |
|-------------|-----------------|--------------|----------------------|
| 0 | 2276.60 | 112.01 | Initial Hydro-static |
| 1 | 25.57 | 110.57 | Open To Flow (1) |
| 31 | 82.13 | 115.26 | Shut-In(1) |
| 77 | 1135.58 | 115.75 | End Shut-In(1) |
| 78 | 85.86 | 115.43 | Open To Flow (2) |
| 122 | 146.89 | 119.85 | Shut-In(2) |
| 183 | 1053.70 | 119.44 | End Shut-In(2) |
| 185 | 2137.52 | 120.23 | Final Hydro-static |

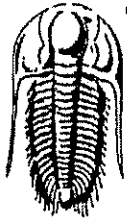
Recovery

| Length (ft) | Description | Volume (bbl) |
|-------------|----------------------------------|--------------|
| 124.00 | GWCM 3%g 42%w 55%m | 1.74 |
| 62.00 | GWCM 3%g 28%w 69%m | 0.87 |
| 94.00 | WCM 17%w 83%m with a Skim of Oil | 1.32 |
| | | |
| | | |

* Recovery from multiple tests

Gas Rates

| | Choke (inches) | Pressure (psig) | Gas Rate (Mcf/d) |
|--|----------------|-----------------|------------------|
| | | | |



**TRILOBITE
TESTING, INC**

DRILL STEM TEST REPORT

FLUID SUMMARY

Lario Oil & Gas Company

23-18s-35w Wichita Co. KS

301 S Market St.
Wichita KS. 67202

Krause # 1-23

Job Ticket: 57711

DST#: 4

ATTN: Steve Davis

Test Start: 2014.08.02 @ 18:52:00

Mud and Cushion Information

Mud Type: Gel Chem

Cushion Type:

Oil API:

deg API

Mud Weight: 9.00 lb/gal

Cushion Length:

ft

Water Salinity:

27000 ppm

Viscosity: 60.00 sec/qt

Cushion Volume:

bbf

Water Loss: 10.36 in²

Gas Cushion Type:

Resistivity: ohm.m

Gas Cushion Pressure:

psig

Salinity: 9500.00 ppm

Filter Cake: 2.00 inches

Recovery Information

Recovery Table

| Length ft | Description | Volume bbf |
|--------------|--|---------------|
| 124.00 | GWCM 3%g 42%w 55%m | 1.739 |
| 62.00 | GWCM 3%g 28%w 69%m | 0.870 |
| 94.00 | WCM 17%w 83%m with a Skim of Oil on To | 1.319 |

Total Length: 280.00 ft Total Volume: 3.928 bbf

Num Fluid Samples: 0

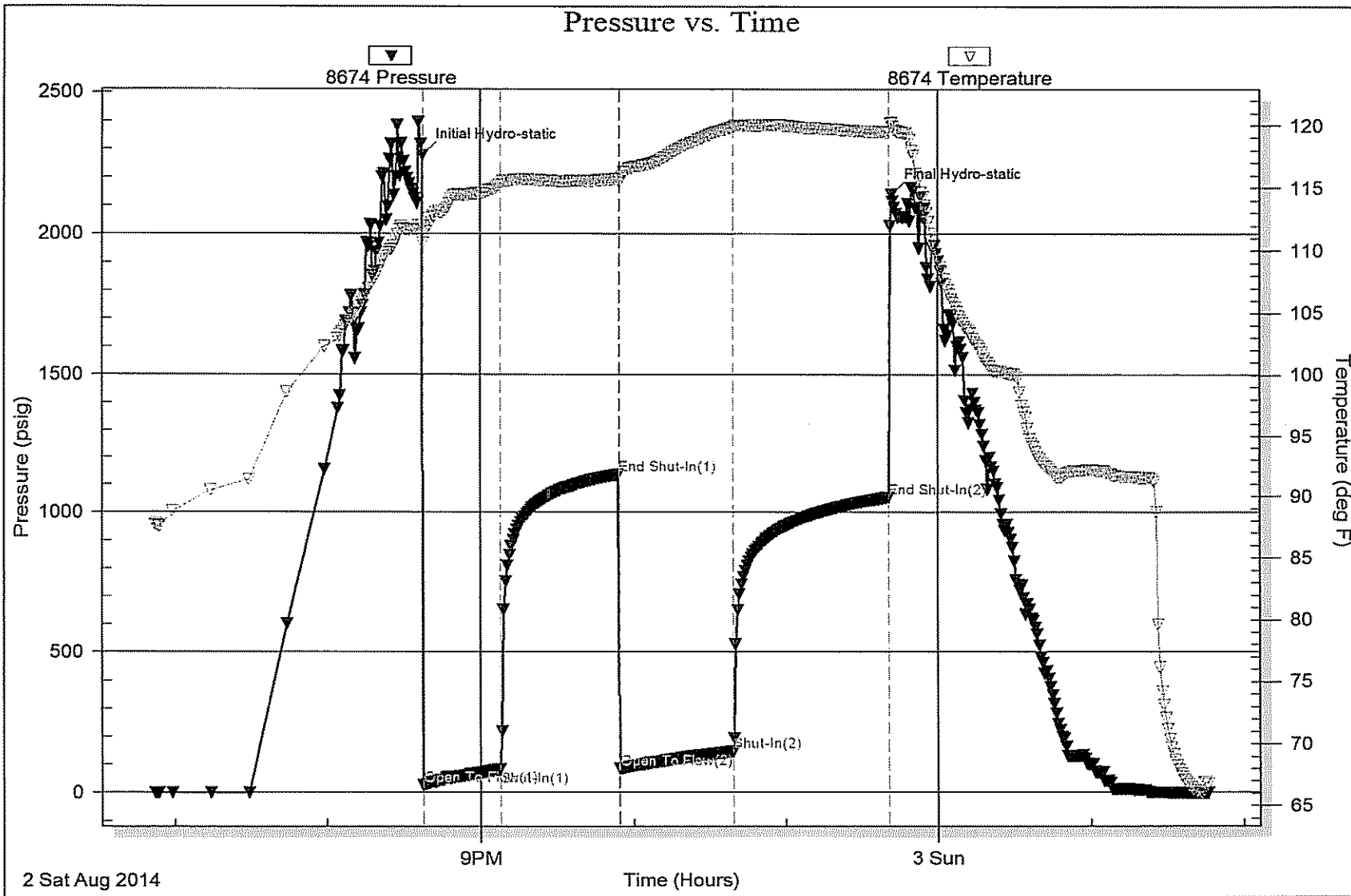
Num Gas Bombs: 0

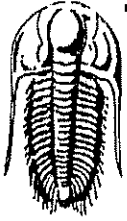
Serial #:

Laboratory Name:

Laboratory Location:

Recovery Comments: RW is .233 @ 73f = 27000





TRILOBITE TESTING, INC.

DRILL STEM TEST REPORT

Lario Oil & Gas Company

23-18s-35w Wichita Co. KS

301 S Market St.
Wichita KS. 67202

Krause # 1-23

Job Ticket: 57712

DST#: 5

ATTN: Steve Davis

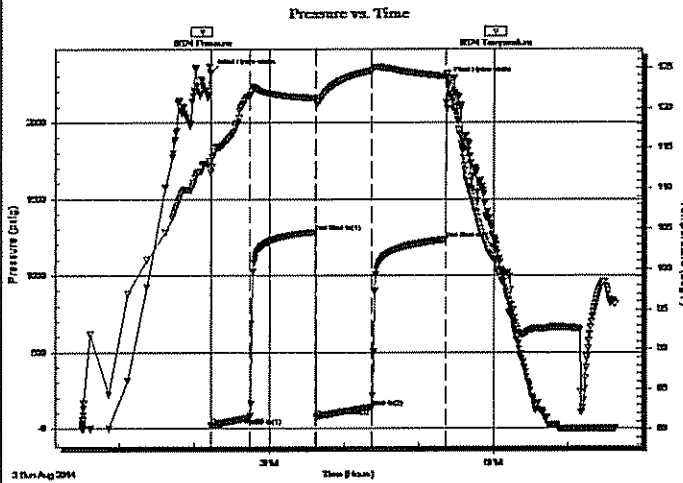
Test Start: 2014.08.03 @ 12:30:00

GENERAL INFORMATION:

Formation: **Pawnee**
 Deviated: No Whipstock: ft (KB)
 Time Tool Opened: 14:13:25
 Time Test Ended: 19:38:09
 Test Type: Conventional Bottom Hole (Reset)
 Tester: Will MacLean
 Unit No:
 Interval: **4604.00 ft (KB) To 4628.00 ft (KB) (TVD)**
 Reference Elevations: 3186.00 ft (KB)
 Total Depth: 4628.00 ft (KB) (TVD)
 3175.00 ft (CF)
 Hole Diameter: 7.88 inches Hole Condition: Good
 KB to GR/CF: 11.00 ft

Serial #: 8674 Inside
 Press@RunDepth: 140.02 psig @ 4605.00 ft (KB) Capacity: 8000.00 psig
 Start Date: 2014.08.03 End Date: 2014.08.03 Last Calib.: 2014.08.03
 Start Time: 12:30:00 End Time: 19:38:09 Time On Btm: 2014.08.03 @ 14:13:10
 Time Off Btm: 2014.08.03 @ 17:23:09

TEST COMMENT: IF- Weak Surface Blow Built to 4 1/4"
 ISF- No Blow
 FF- Weak Surface Blow Built to 1"
 FSI- No Blow



PRESSURE SUMMARY

| Time (Min.) | Pressure (psig) | Temp (deg F) | Annotation |
|-------------|-----------------|--------------|----------------------|
| 0 | 2321.78 | 113.44 | Initial Hydro-static |
| 1 | 20.30 | 112.00 | Open To Flow (1) |
| 32 | 71.44 | 121.59 | Shut-In(1) |
| 84 | 1283.19 | 121.22 | End Shut-In(1) |
| 84 | 76.79 | 120.63 | Open To Flow (2) |
| 129 | 140.02 | 124.63 | Shut-In(2) |
| 189 | 1233.76 | 123.89 | End Shut-In(2) |
| 190 | 2268.64 | 124.12 | Final Hydro-static |

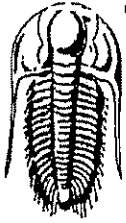
Recovery

| Length (ft) | Description | Volumes (bbl) |
|-------------|---------------------------|---------------|
| 124.00 | OGMCW 4%oil 8%g 14%m 74%w | 1.74 |
| 62.00 | GOMCW 5%g 6%oil 26%m 63%w | 0.87 |
| 62.00 | OWGCM 3%oil 4%w 8%g 85%m | 0.87 |
| 20.00 | WOCM 5%w 7%oil 88%m | 0.28 |
| 5.00 | 100%oil | 0.07 |

* Recovery from multiple tests

Gas Rates

| | Choke (inches) | Pressure (psig) | Gas Rate (Mcf/d) |
|--|----------------|-----------------|------------------|
| | | | |



**TRILOBITE
TESTING, INC.**

DRILL STEM TEST REPORT

FLUID SUMMARY

Lario Oil & Gas Company

23-18s-35w Wichita Co. KS

301 S Market St.
Wichita KS. 67202

Krause # 1-23

Job Ticket: 57712

DST#: 5

ATTN: Steve Davis

Test Start: 2014.08.03 @ 12:30:00

Mud and Cushion Information

Mud Type: Gel Chem

Cushion Type:

Oil API:

28 deg API

Mud Weight: 9.00 lb/gal

Cushion Length:

ft

Water Salinity:

34500 ppm

Viscosity: 76.00 sec/qt

Cushion Volume:

bbf

Water Loss: 11.17 in³

Gas Cushion Type:

Resistivity: ohm.m

Gas Cushion Pressure:

psig

Salinity: 9000.00 ppm

Filter Cake: 2.00 inches

Recovery Information

Recovery Table

| Length ft | Description | Volume bbf |
|--------------|---------------------------|---------------|
| 124.00 | OGMCW 4%oil 8%g 14%m 74%w | 1.739 |
| 62.00 | GOMCW 5%g 6%oil 26%m 63%w | 0.870 |
| 62.00 | OWGCM 3%oil 4%w 8%g 85%m | 0.870 |
| 20.00 | WOCM 5%w 7%oil 88%m | 0.281 |
| 5.00 | 100%oil | 0.070 |

Total Length: 273.00 ft Total Volume: 3.830 bbf

Num Fluid Samples: 0

Num Gas Bombs: 0

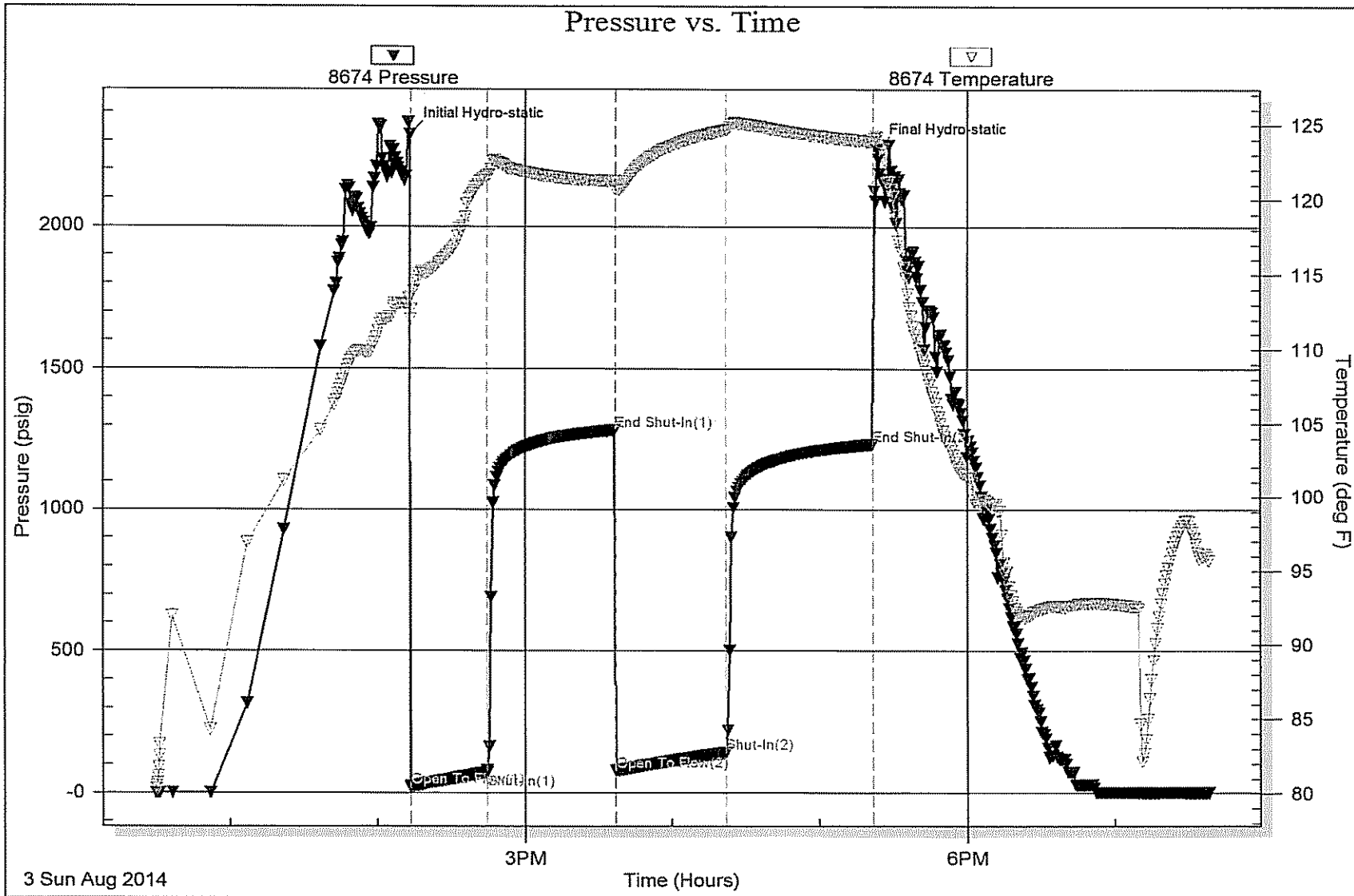
Serial #:

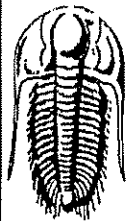
Laboratory Name:

Laboratory Location:

Recovery Comments: RW is .134 @ 100f = 34500

API is 31 @ 90f = 28





TRILOBITE TESTING, INC.

DRILL STEM TEST REPORT

Lario Oil & Gas Company

23-18s-35w Wichita Co. KS

301 S Market St.
Wichita KS. 67202

Krause # 1-23

Job Ticket: 57713

DST#: 6

ATTN: Steve Davis

Test Start: 2014.08.04 @ 10:48:00

GENERAL INFORMATION:

Formation: **Cherokee**

Deviated: No Whipstock: ft (KB)

Time Tool Opened: 12:37:10

Time Test Ended: 17:35:24

Test Type: Conventional Bottom Hole (Reset)

Tester: Will MacLean

Unit No:

Interval: 4658.00 ft (KB) To 4716.00 ft (KB) (TVD)

Reference Elevations: 3186.00 ft (KB)

Total Depth: 4716.00 ft (KB) (TVD)

3175.00 ft (CF)

Hole Diameter: 7.88 inches Hole Condition: Good

KB to GR/CF: 11.00 ft

Serial #: 8674 Inside

Press@RunDepth: 21.35 psig @ 4659.00 ft (KB)

Capacity: 8000.00 psig

Start Date: 2014.08.04

End Date: 2014.08.04

Last Calib.: 2014.08.04

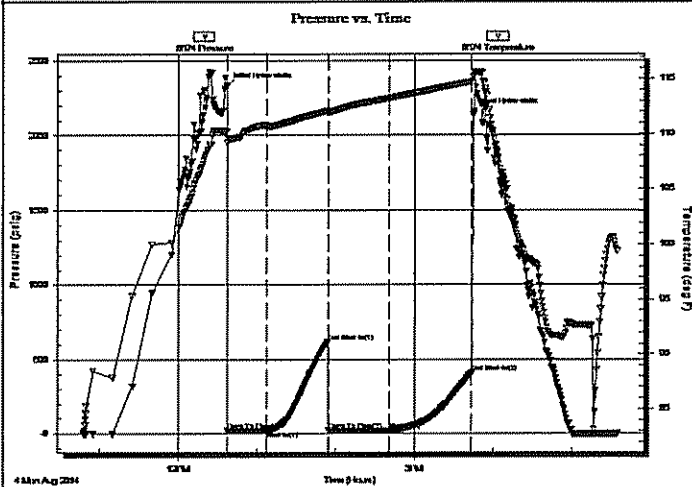
Start Time: 10:48:00

End Time: 17:35:24

Time On Btm: 2014.08.04 @ 12:36:55

Time Off Btm: 2014.08.04 @ 15:45:39

TEST COMMENT: IF- Weak Surface Blow
 IS- No Blow
 FF- Very Weak Surface Blow in 15min
 FS- No Blow



PRESSURE SUMMARY

| Time (Min.) | Pressure (psig) | Temp (deg F) | Annotation |
|-------------|-----------------|--------------|----------------------|
| 0 | 2327.53 | 110.27 | Initial Hydro-static |
| 1 | 19.48 | 109.18 | Open To Flow (1) |
| 31 | 21.43 | 110.72 | Shut-In(1) |
| 77 | 616.26 | 112.08 | End Shut-In(1) |
| 78 | 21.57 | 111.85 | Open To Flow (2) |
| 124 | 21.35 | 113.23 | Shut-In(2) |
| 187 | 410.52 | 114.73 | End Shut-In(2) |
| 189 | 2156.70 | 115.23 | Final Hydro-static |

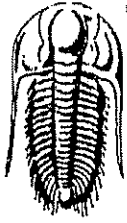
Recovery

| Length (ft) | Description | Volume (bbl) |
|-------------|--------------|--------------|
| 10.00 | WCM 2%w 98%m | 0.14 |
| | | |
| | | |
| | | |
| | | |

Gas Rates

| | Choke (Inches) | Pressure (psig) | Gas Rate (Mcf/d) |
|--|----------------|-----------------|------------------|
| | | | |

* Recovery from multiple tests



**TRILOBITE
TESTING, INC**

DRILL STEM TEST REPORT

FLUID SUMMARY

Lario Oil & Gas Company

23-18s-35w Wichita Co. KS

301 S Market St.
Wichita KS. 67202

Krause # 1-23

Job Ticket: 57713

DST#: 6

ATTN: Steve Davis

Test Start: 2014.08.04 @ 10:48:00

Mud and Cushion Information

Mud Type: Gel Chem

Cushion Type:

Oil API:

deg API

Mud Weight: 9.00 lb/gal

Cushion Length:

ft

Water Salinity:

ppm

Viscosity: 55.00 sec/qt

Cushion Volume:

bbl

Water Loss: 10.37 in³

Gas Cushion Type:

Resistivity: ohm.m

Gas Cushion Pressure:

psig

Salinity: 8800.00 ppm

Filter Cake: 1.00 inches

Recovery Information

Recovery Table

| Length ft | Description | Volume bbl |
|--------------|--------------|---------------|
| 10.00 | WCM 2%w 98%m | 0.140 |

Total Length: 10.00 ft

Total Volume: 0.140 bbl

Num Fluid Samples: 0

Num Gas Bombs: 0

Serial #:

Laboratory Name:

Laboratory Location:

Recovery Comments:

