



DRILL STEM TEST REPORT

Prepared For: **Dreiling Oil, Inc.**

PO Box 550
Hays, KS 67601

ATTN: Roger Fisher

Dreiling Trust #2

20-13s-17w Ellis,KS

Start Date: 2014.08.05 @ 00:06:37

End Date: 2014.08.05 @ 06:21:46

Job Ticket #: 58924 DST #: 1

Trilobite Testing, Inc
1515 Commerce Parkway Hays, KS 67601
ph: 785-625-4778 fax: 785-625-5620

Printed: 2014.08.07 @ 16:11:49



TRILOBITE TESTING, INC

DRILL STEM TEST REPORT

Dreiling Oil, Inc.

20-13s-17w Ellis,KS

PO Box 550
Hays, KS 67601

Dreiling Trust #2

Job Ticket: 58924

DST#: 1

ATTN: Roger Fisher

Test Start: 2014.08.05 @ 00:06:37

GENERAL INFORMATION:

Formation: **LKC A-G**

Deviated: No Whipstock: ft (KB)

Time Tool Opened: 01:48:17

Time Test Ended: 06:21:46

Test Type: Conventional Bottom Hole (Initial)

Tester: Tate Lang

Unit No: 41

Interval: 3330.00 ft (KB) To 3440.00 ft (KB) (TVD)

Reference Elevations: 2046.00 ft (KB)

Total Depth: 3440.00 ft (KB) (TVD)

2038.00 ft (CF)

Hole Diameter: 7.88 inches Hole Condition: Good

KB to GR/CF: 8.00 ft

Serial #: 8898 Outside

Press@RunDepth: 61.37 psig @ 3342.00 ft (KB)

Capacity: 8000.00 psig

Start Date: 2014.08.05

End Date:

2014.08.05

Last Calib.: 2014.08.05

Start Time: 00:06:38

End Time:

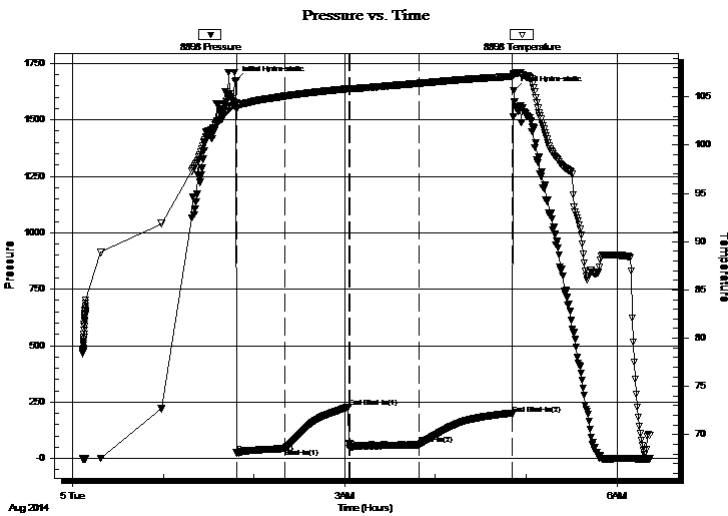
06:21:47

Time On Btm: 2014.08.05 @ 01:48:07

Time Off Btm: 2014.08.05 @ 04:51:46

TEST COMMENT: Fair blow built to 4"
Dead no blow back
Weak surface blow built to 2"
Dead no blow back

PRESSURE SUMMARY



Time (Min.)	Pressure (psig)	Temp (deg F)	Annotation
0	1674.87	104.35	Initial Hydro-static
1	25.41	103.72	Open To Flow (1)
33	44.80	105.07	Shut-In(1)
75	228.77	105.83	End Shut-In(1)
75	46.16	105.78	Open To Flow (2)
121	61.37	106.39	Shut-In(2)
183	198.59	107.11	End Shut-In(2)
184	1630.38	107.36	Final Hydro-static

Recovery

Length (ft)	Description	Volume (bbl)
75.00	100%M With show of oil on top	0.53

Gas Rates

	Choke (inches)	Pressure (psig)	Gas Rate (Mcf/d)



**TRILOBITE
TESTING, INC**

DRILL STEM TEST REPORT

Dreiling Oil, Inc.

20-13s-17w Ellis,KS

PO Box 550
Hays, KS 67601

Dreiling Trust #2

Job Ticket: 58924

DST#: 1

ATTN: Roger Fisher

Test Start: 2014.08.05 @ 00:06:37

GENERAL INFORMATION:

Formation: **LKC A-G**

Deviated: No Whipstock: ft (KB)

Time Tool Opened: 01:48:17

Time Test Ended: 06:21:46

Test Type: Conventional Bottom Hole (Initial)

Tester: Tate Lang

Unit No: 41

Interval: 3330.00 ft (KB) To 3440.00 ft (KB) (TVD)

Reference Elevations: 2046.00 ft (KB)

Total Depth: 3440.00 ft (KB) (TVD)

2038.00 ft (CF)

Hole Diameter: 7.88 inches Hole Condition: Good

KB to GR/CF: 8.00 ft

Serial #: 8897 Inside

Press@RunDepth: psig @ 3342.00 ft (KB)

Capacity: 8000.00 psig

Start Date: 2014.08.05

End Date:

2014.08.05

Last Calib.:

2014.08.05

Start Time: 00:06:31

End Time:

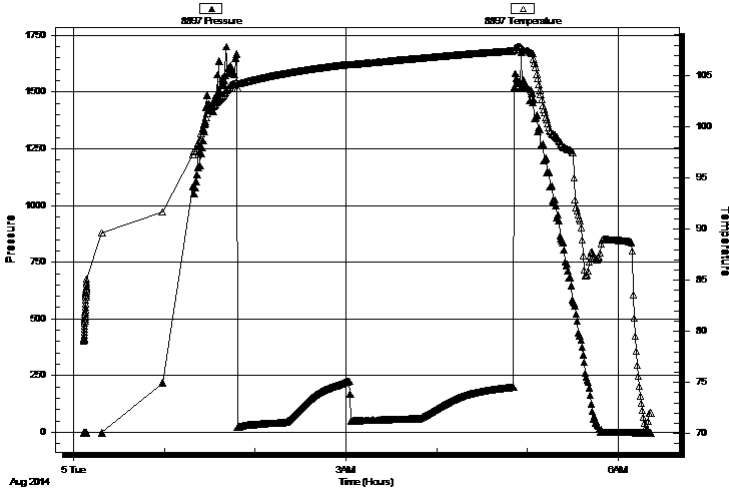
06:21:40

Time On Btm:

Time Off Btm:

TEST COMMENT: Fair blow built to 4"
Dead no blow back
Weak surface blow built to 2"
Dead no blow back

Pressure vs. Time



PRESSURE SUMMARY

Time (Min.)	Pressure (psig)	Temp (deg F)	Annotation
-------------	-----------------	--------------	------------

Recovery

Length (ft)	Description	Volume (bbl)
75.00	100%M With show of oil on top	0.53

Gas Rates

	Choke (inches)	Pressure (psig)	Gas Rate (Mcf/d)
--	----------------	-----------------	------------------



**TRILOBITE
TESTING, INC**

DRILL STEM TEST REPORT

TOOL DIAGRAM

Dreiling Oil, Inc.

20-13s-17w Ellis,KS

PO Box 550
Hays, KS 67601

Dreiling Trust #2

Job Ticket: 58924

DST#: 1

ATTN: Roger Fisher

Test Start: 2014.08.05 @ 00:06:37

Tool Information

Drill Pipe:	Length: 3038.00 ft	Diameter: 3.80 inches	Volume: 42.62 bbl	Tool Weight: 2000.00 lb
Heavy Wt. Pipe:	Length: 279.00 ft	Diameter: 2.70 inches	Volume: 1.98 bbl	Weight set on Packer: 20000.00 lb
Drill Collar:	Length: 0.00 ft	Diameter: 2.25 inches	Volume: 0.00 bbl	Weight to Pull Loose: 55000.00 lb
			<u>Total Volume: 44.60 bbl</u>	Tool Chased 0.00 ft
Drill Pipe Above KB:	7.00 ft			String Weight: Initial 52000.00 lb
Depth to Top Packer:	3330.00 ft			Final 52000.00 lb
Depth to Bottom Packer:	ft			
Interval between Packers:	110.00 ft			
Tool Length:	130.00 ft			
Number of Packers:	2	Diameter: 6.75 inches		

Tool Comments:

Tool Description

Tool Description	Length (ft)	Serial No.	Position	Depth (ft)	Accum. Lengths
Shut In Tool	5.00			3315.00	
Hydraulic tool	5.00			3320.00	
Packer	5.00			3325.00	20.00 Bottom Of Top Packer
Packer	5.00			3330.00	
Stubb	1.00			3331.00	
Perforations	11.00			3342.00	
Recorder	0.00	8897	Inside	3342.00	
Recorder	0.00	8898	Outside	3342.00	
Change Over Sub	1.00			3343.00	
Drill Pipe	93.00			3436.00	
Change Over Sub	1.00			3437.00	
Bullnose	3.00			3440.00	110.00 Bottom Packers & Anchor

Total Tool Length: 130.00



**TRILOBITE
TESTING, INC**

DRILL STEM TEST REPORT

FLUID SUMMARY

Dreiling Oil, Inc.

20-13s-17w Ellis,KS

PO Box 550
Hays, KS 67601

Dreiling Trust #2

Job Ticket: 58924

DST#: 1

ATTN: Roger Fisher

Test Start: 2014.08.05 @ 00:06:37

Mud and Cushion Information

Mud Type: Gel Chem

Cushion Type:

Oil API:

deg API

Mud Weight: 9.00 lb/gal

Cushion Length:

ft

Water Salinity:

ppm

Viscosity: 52.00 sec/qt

Cushion Volume:

bbbl

Water Loss: 8.78 in³

Gas Cushion Type:

Resistivity: ohm.m

Gas Cushion Pressure:

psig

Salinity: 4800.00 ppm

Filter Cake: 1.00 inches

Recovery Information

Recovery Table

Length ft	Description	Volume bbbl
75.00	100%M With show of oil on top	0.531

Total Length: 75.00 ft Total Volume: 0.531 bbl

Num Fluid Samples: 0

Num Gas Bombs: 0

Serial #:

Laboratory Name:

Laboratory Location:

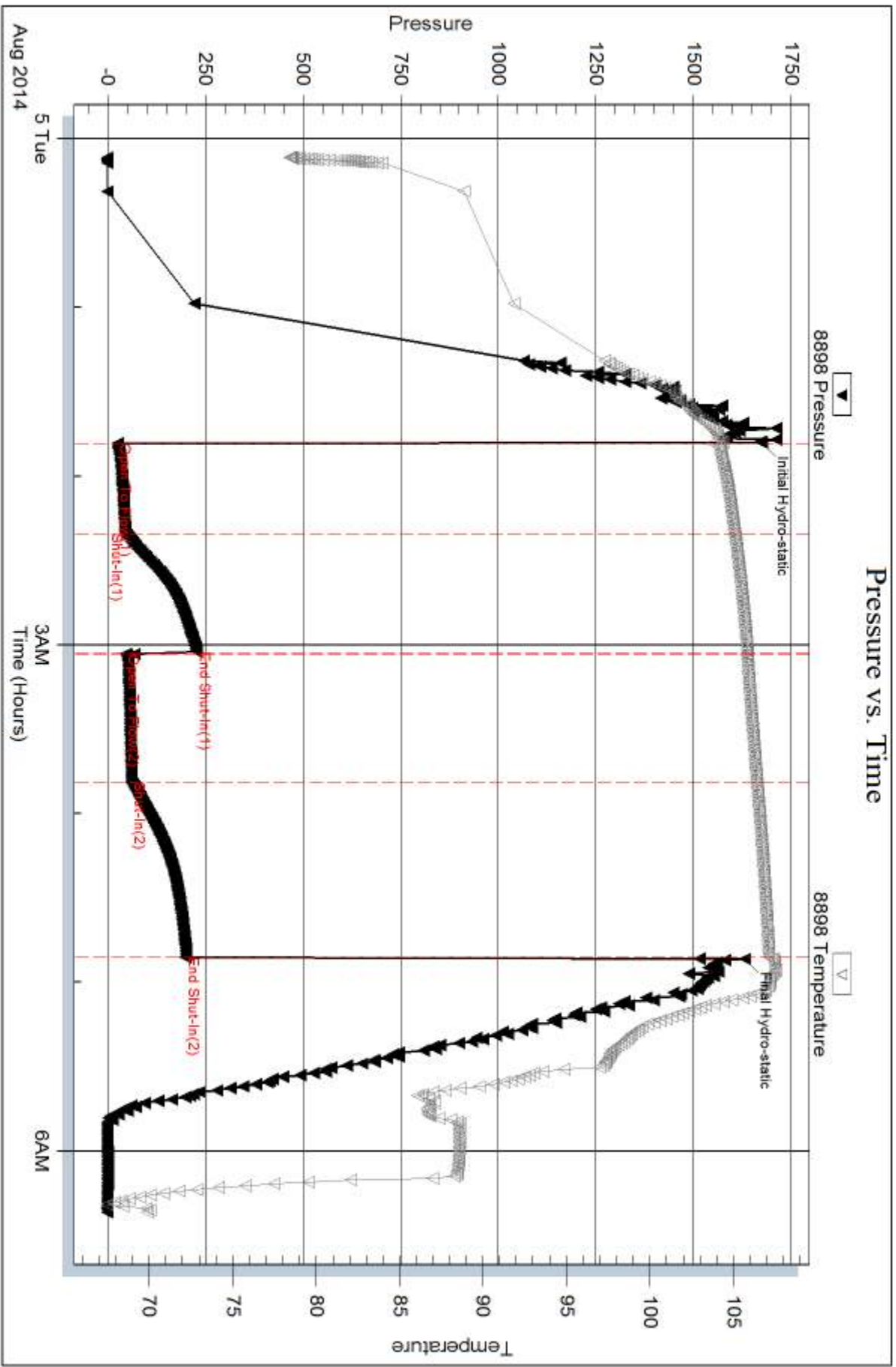
Recovery Comments:

Serial #: 8898

Outside Drilling Oil, Inc.

Drilling Trust #2

DST Test Number: 1



Trilobite Testing, Inc

Ref. No: 58924

Printed: 2014.08.07 @ 16:11:50

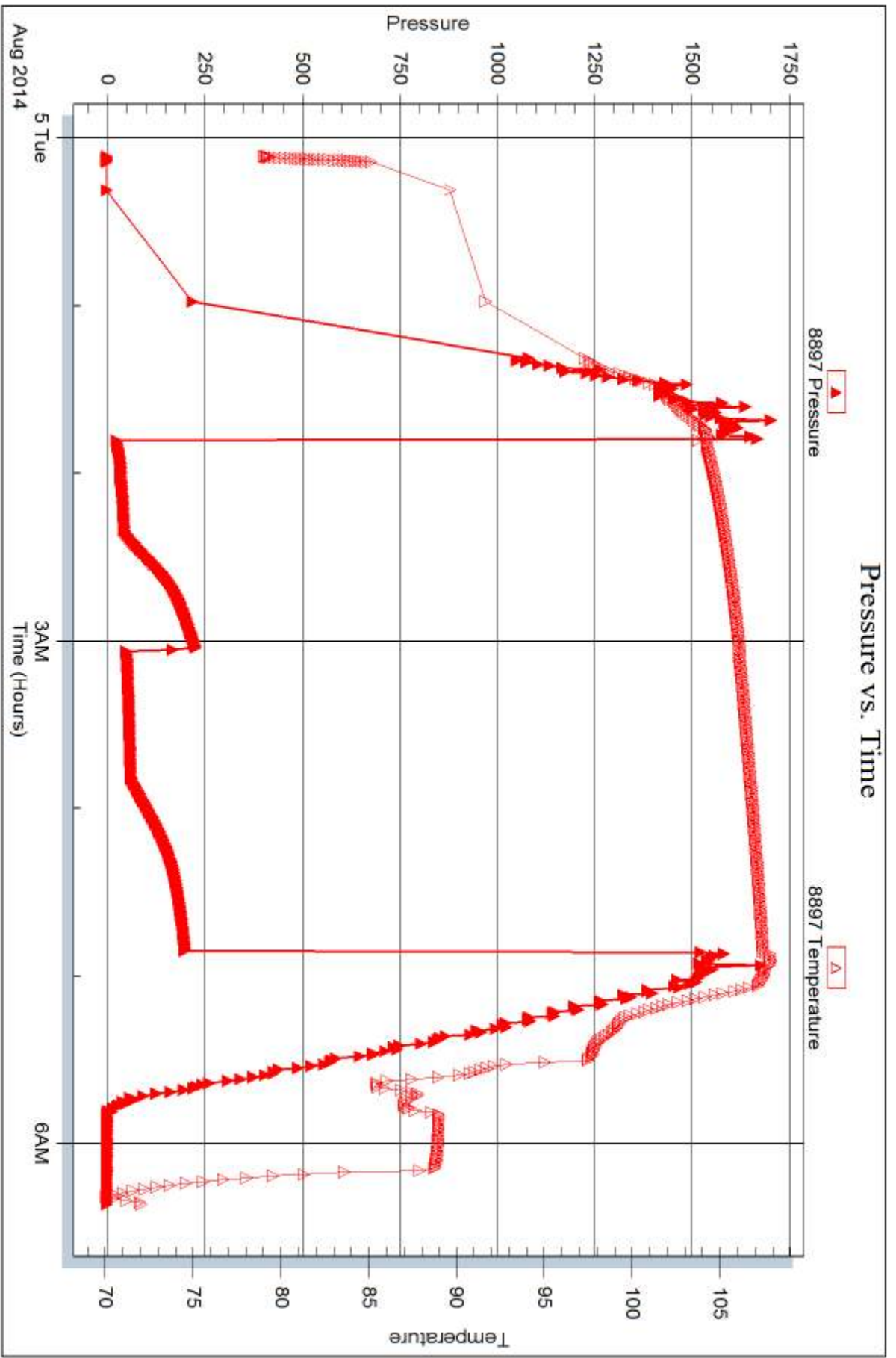
Serial #: 8897

Inside

Dreiling Oil, Inc.

Dreiling Trust#2

DST Test Number: 1



Trilobite Testing, Inc

Ref. No: 58924

Printed: 2014.08.07 @ 16:11:50



DRILL STEM TEST REPORT

Prepared For: **Dreiling Oil, Inc.**

PO Box 550
Hays, KS 67601

ATTN: Roger Fisher

Dreiling Trust #2

20-13s-17w Ellis,KS

Start Date: 2014.08.05 @ 15:00:38

End Date: 2014.08.05 @ 19:09:28

Job Ticket #: 58925 DST #: 2

Trilobite Testing, Inc
1515 Commerce Parkway Hays, KS 67601
ph: 785-625-4778 fax: 785-625-5620

Printed: 2014.08.07 @ 16:11:22



TRILOBITE TESTING, INC

DRILL STEM TEST REPORT

Dreiling Oil, Inc.

20-13s-17w Ellis,KS

PO Box 550
Hays, KS 67601

Dreiling Trust #2

Job Ticket: 58925

DST#: 2

ATTN: Roger Fisher

Test Start: 2014.08.05 @ 15:00:38

GENERAL INFORMATION:

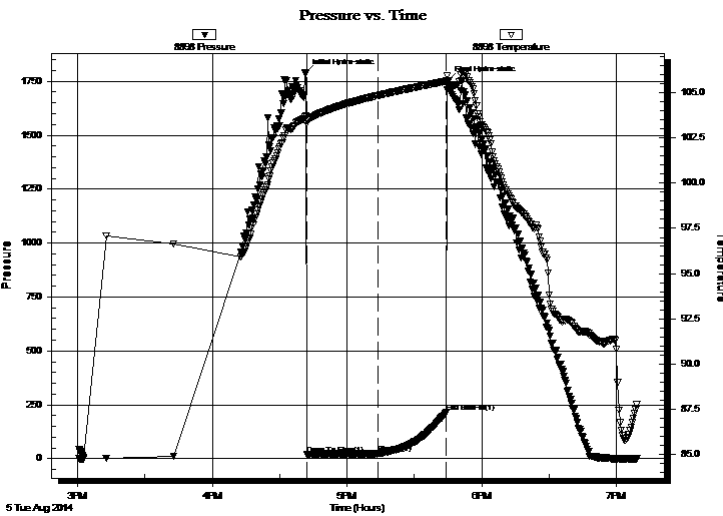
Formation: **H-J**
 Deviated: No Whipstock: ft (KB)
 Time Tool Opened: 16:42:08
 Time Test Ended: 19:09:28
 Interval: **3468.00 ft (KB) To 3530.00 ft (KB) (TVD)**
 Total Depth: 3530.00 ft (KB) (TVD)
 Hole Diameter: 7.88 inches Hole Condition: Good
 Test Type: Conventional Bottom Hole (Reset)
 Tester: Tate Lang
 Unit No: 77
 Reference Elevations: 2046.00 ft (KB)
 2038.00 ft (CF)
 KB to GR/CF: 8.00 ft

Serial #: 8898

Outside

Press@RunDepth: 23.68 psig @ 3480.00 ft (KB) Capacity: 8000.00 psig
 Start Date: 2014.08.05 End Date: 2014.08.05 Last Calib.: 2014.08.05
 Start Time: 15:00:39 End Time: 19:09:28 Time On Btm: 2014.08.05 @ 16:41:48
 Time Off Btm: 2014.08.05 @ 17:45:08

TEST COMMENT: Weak surface blow
 Dead no blow
 PULLED TOOL



PRESSURE SUMMARY

Time (Min.)	Pressure (psig)	Temp (deg F)	Annotation
0	1788.05	103.70	Initial Hydro-static
1	21.71	103.29	Open To Flow (1)
32	23.68	104.83	Shut-In(1)
63	213.91	105.62	End Shut-In(1)
64	1753.69	105.55	Final Hydro-static

Recovery

Length (ft)	Description	Volume (bbl)
1.00	100%M w ith oil spots	0.01

* Recovery from multiple tests

Gas Rates

Choke (inches)	Pressure (psig)	Gas Rate (Mcf/d)



**TRILOBITE
TESTING, INC**

DRILL STEM TEST REPORT

TOOL DIAGRAM

Dreiling Oil, Inc.

20-13s-17w Ellis,KS

PO Box 550
Hays, KS 67601

Dreiling Trust #2

Job Ticket: 58925

DST#: 2

ATTN: Roger Fisher

Test Start: 2014.08.05 @ 15:00:38

Tool Information

Drill Pipe:	Length: 3193.00 ft	Diameter: 3.80 inches	Volume: 44.79 bbl	Tool Weight: 2000.00 lb
Heavy Wt. Pipe:	Length: 279.00 ft	Diameter: 2.70 inches	Volume: 1.98 bbl	Weight set on Packer: 25000.00 lb
Drill Collar:	Length: 0.00 ft	Diameter: 2.25 inches	Volume: 0.00 bbl	Weight to Pull Loose: 60000.00 lb
			<u>Total Volume: 46.77 bbl</u>	Tool Chased 0.00 ft
Drill Pipe Above KB:	24.00 ft			String Weight: Initial 52000.00 lb
Depth to Top Packer:	3468.00 ft			Final 52000.00 lb
Depth to Bottom Packer:	ft			
Interval between Packers:	62.00 ft			
Tool Length:	82.00 ft			
Number of Packers:	2	Diameter: 6.75 inches		

Tool Comments:

Tool Description

Tool Description	Length (ft)	Serial No.	Position	Depth (ft)	Accum. Lengths
Shut In Tool	5.00			3453.00	
Hydraulic tool	5.00			3458.00	
Packer	5.00			3463.00	20.00 Bottom Of Top Packer
Packer	5.00			3468.00	
Stubb	1.00			3469.00	
Perforations	11.00			3480.00	
Recorder	0.00	8897	Inside	3480.00	
Recorder	0.00	8898	Outside	3480.00	
Change Over Sub	1.00			3481.00	
Drill Pipe	31.00			3512.00	
Change Over Sub	1.00			3513.00	
Perforations	14.00			3527.00	
Bullnose	3.00			3530.00	62.00 Bottom Packers & Anchor

Total Tool Length: 82.00



**TRILOBITE
TESTING, INC**

DRILL STEM TEST REPORT

FLUID SUMMARY

Dreiling Oil, Inc.

20-13s-17w Ellis,KS

PO Box 550
Hays, KS 67601

Dreiling Trust #2

Job Ticket: 58925

DST#: 2

ATTN: Roger Fisher

Test Start: 2014.08.05 @ 15:00:38

Mud and Cushion Information

Mud Type: Gel Chem

Cushion Type:

Oil API:

deg API

Mud Weight: 9.00 lb/gal

Cushion Length:

ft

Water Salinity:

ppm

Viscosity: 51.00 sec/qt

Cushion Volume:

bbbl

Water Loss: 9.58 in³

Gas Cushion Type:

Resistivity: ohm.m

Gas Cushion Pressure:

psig

Salinity: 9000.00 ppm

Filter Cake: 1.00 inches

Recovery Information

Recovery Table

Length ft	Description	Volume bbl
1.00	100%M w ith oil spots	0.007

Total Length: 1.00 ft Total Volume: 0.007 bbl

Num Fluid Samples: 0

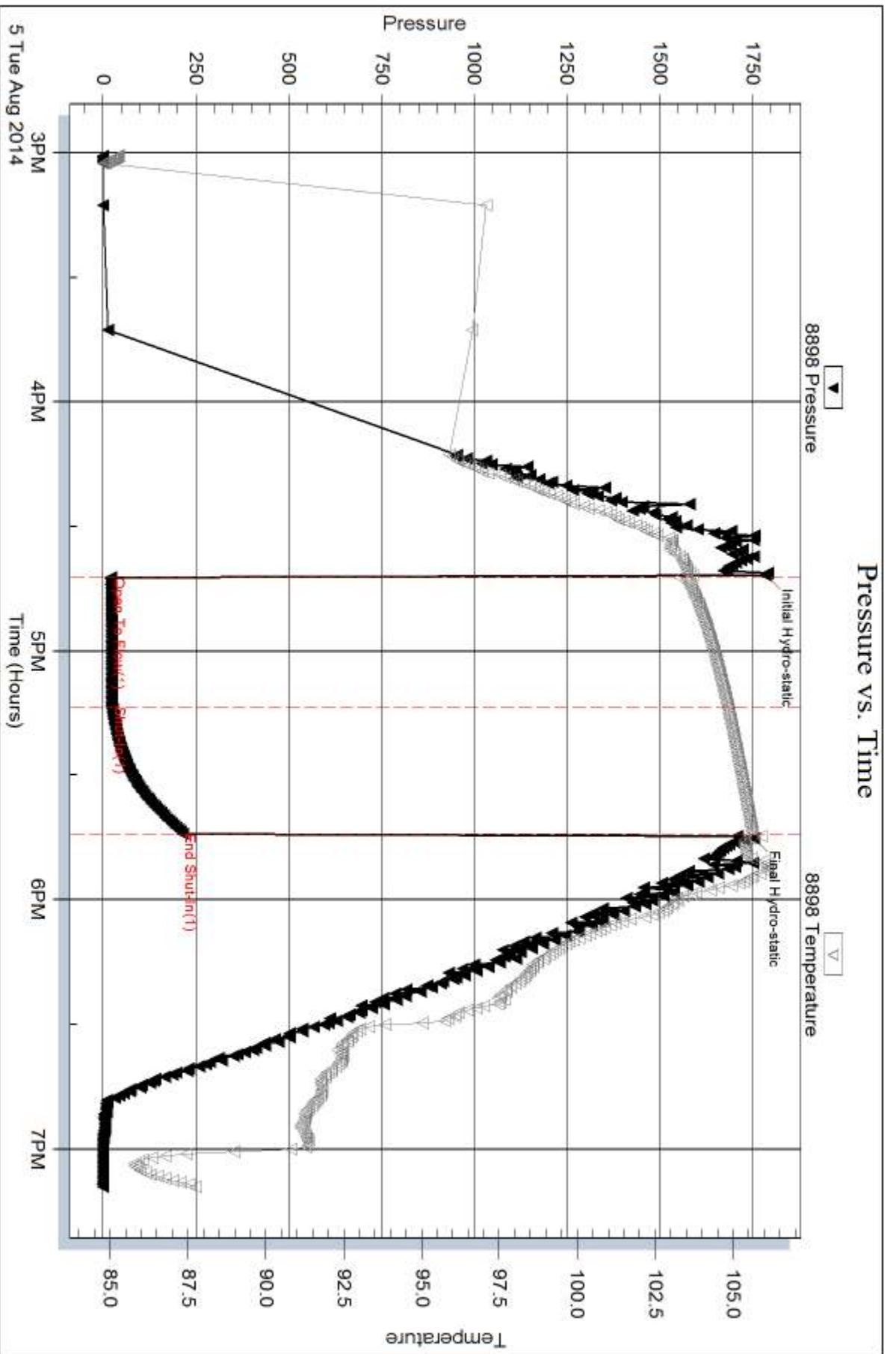
Num Gas Bombs: 0

Serial #:

Laboratory Name:

Laboratory Location:

Recovery Comments:



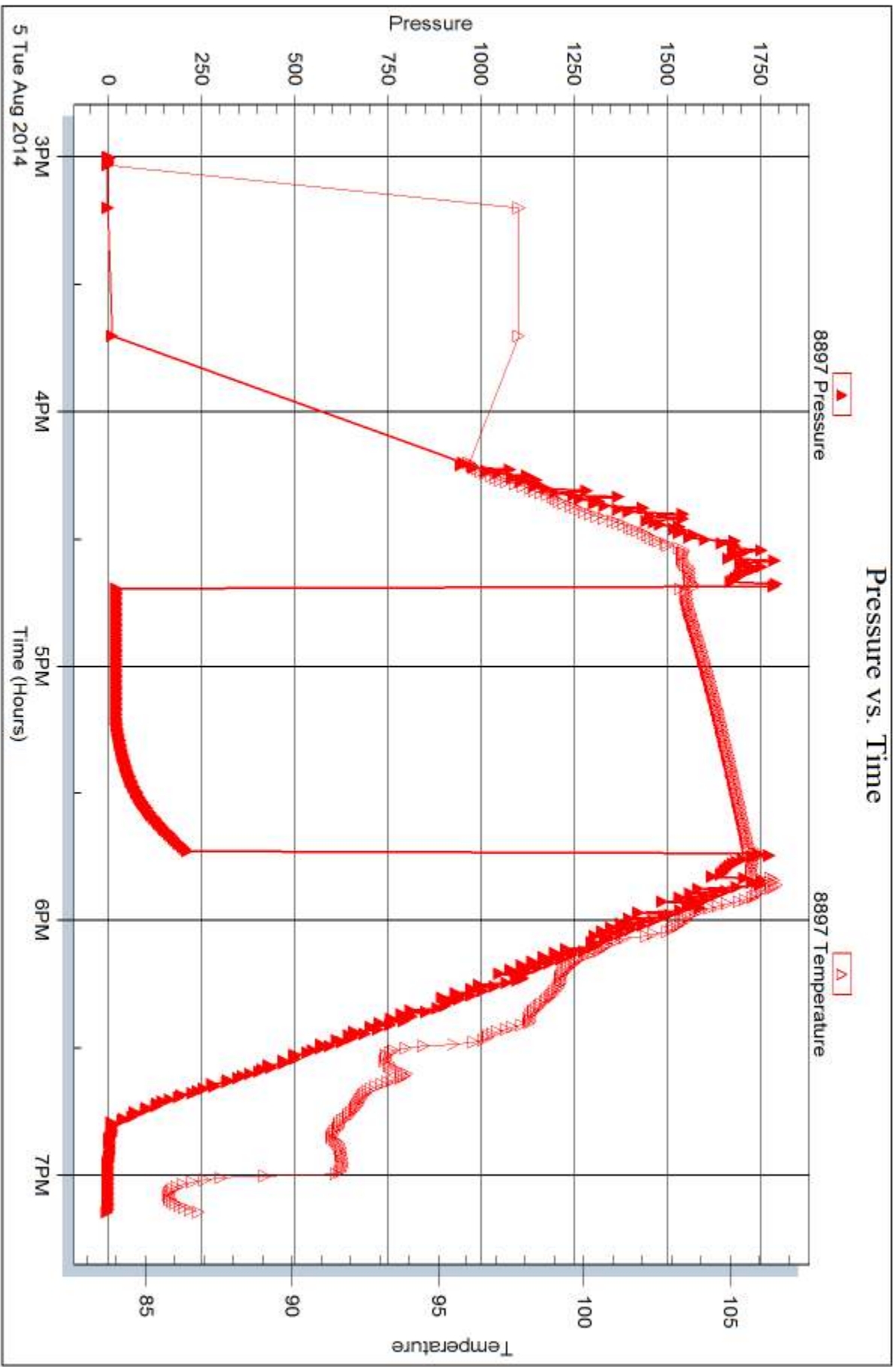
Serial #: 8897

Inside

Dreiling Oil, Inc.

Dreiling Trust#2

DST Test Number: 2



Trilobite Testing, Inc

Ref. No: 58925

Printed: 2014.08.07 @ 16:11:23



DRILL STEM TEST REPORT

Prepared For: **Dreiling Oil, Inc.**

PO Box 550
Hays, KS 67601

ATTN: Roger Fisher

Dreiling Trust #2

20-13s-17w Ellis,KS

Start Date: 2014.08.06 @ 04:03:22

End Date: 2014.08.06 @ 10:06:22

Job Ticket #: 60501 DST #: 3

Trilobite Testing, Inc
1515 Commerce Parkway Hays, KS 67601
ph: 785-625-4778 fax: 785-625-5620

Printed: 2014.08.07 @ 16:10:25



**TRILOBITE
TESTING, INC**

DRILL STEM TEST REPORT

Dreiling Oil, Inc.

20-13s-17w Ellis,KS

PO Box 550
Hays, KS 67601

Dreiling Trust #2

Job Ticket: 60501

DST#: 3

ATTN: Roger Fisher

Test Start: 2014.08.06 @ 04:03:22

GENERAL INFORMATION:

Formation: **Arbuckle**

Deviated: No Whipstock: ft (KB)

Time Tool Opened: 06:02:02

Time Test Ended: 10:06:22

Test Type: Conventional Bottom Hole (Reset)

Tester: Tate Lang

Unit No: 41

Interval: 3565.00 ft (KB) To 3602.00 ft (KB) (TVD)

Reference Elevations: 2046.00 ft (KB)

Total Depth: 3602.00 ft (KB) (TVD)

2038.00 ft (CF)

Hole Diameter: 7.88 inches Hole Condition: Good

KB to GR/CF: 8.00 ft

Serial #: 8898 Outside

Press@RunDepth: 24.44 psig @ 3577.00 ft (KB)

Capacity: 8000.00 psig

Start Date: 2014.08.06 End Date: 2014.08.06

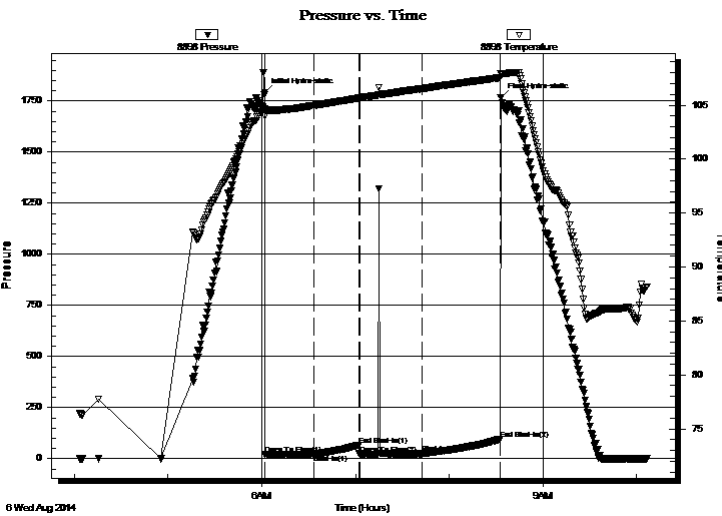
Last Calib.: 2014.08.06

Start Time: 04:03:23 End Time: 10:06:22

Time On Btm: 2014.08.06 @ 06:01:52

Time Off Btm: 2014.08.06 @ 08:33:01

TEST COMMENT: Weak surface blow
Dead no blow back
Dead no blow flushed tool @ 10 mins Weak surface blow
Dead no blow back



PRESSURE SUMMARY

Time (Min.)	Pressure (psig)	Temp (deg F)	Annotation
0	1791.42	104.66	Initial Hydro-static
1	19.72	103.98	Open To Flow (1)
32	21.42	104.96	Shut-In(1)
61	66.96	105.65	End Shut-In(1)
61	22.36	105.64	Open To Flow (2)
101	24.44	106.52	Shut-In(2)
151	95.45	107.54	End Shut-In(2)
152	1766.50	107.88	Final Hydro-static

Recovery

Length (ft)	Description	Volume (bbl)
15.00	SOCM 15%O 85%M	0.11

Gas Rates

	Choke (inches)	Pressure (psig)	Gas Rate (Mcf/d)

* Recovery from multiple tests



TRILOBITE TESTING, INC

DRILL STEM TEST REPORT

Dreiling Oil, Inc.

20-13s-17w Ellis,KS

PO Box 550
Hays, KS 67601

Dreiling Trust #2

Job Ticket: 60501

DST#: 3

ATTN: Roger Fisher

Test Start: 2014.08.06 @ 04:03:22

GENERAL INFORMATION:

Formation: **Arbuckle**

Deviated: No Whipstock: ft (KB)

Time Tool Opened: 06:02:02

Time Test Ended: 10:06:22

Test Type: Conventional Bottom Hole (Reset)

Tester: Tate Lang

Unit No: 41

Interval: 3565.00 ft (KB) To 3602.00 ft (KB) (TVD)

Reference Elevations: 2046.00 ft (KB)

Total Depth: 3602.00 ft (KB) (TVD)

2038.00 ft (CF)

Hole Diameter: 7.88 inches Hole Condition: Good

KB to GR/CF: 8.00 ft

Serial #: 8897 Inside

Press@RunDepth: psig @ 3577.00 ft (KB)

Capacity: 8000.00 psig

Start Date: 2014.08.06

End Date: 2014.08.06

Last Calib.: 2014.08.06

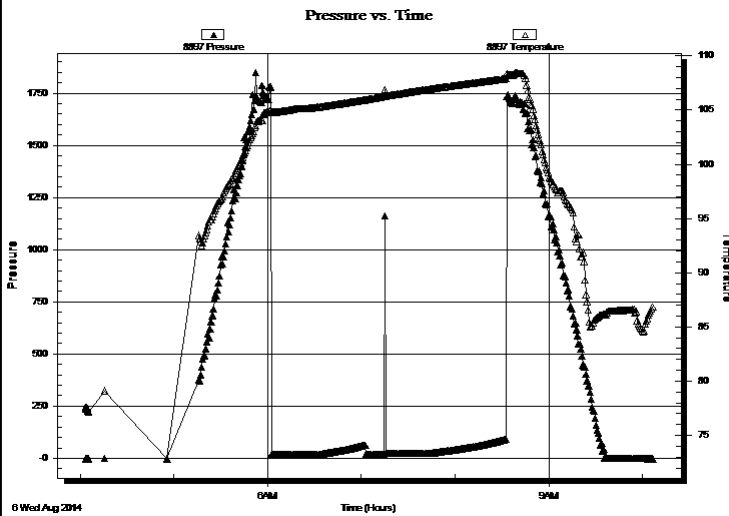
Start Time: 04:03:31

End Time: 10:06:30

Time On Btm:

Time Off Btm:

TEST COMMENT: Weak surface blow
Dead no blow back
Dead no blow flushed tool @ 10 mins Weak surface blow
Dead no blow back



PRESSURE SUMMARY

Time (Min.)	Pressure (psig)	Temp (deg F)	Annotation

Recovery

Length (ft)	Description	Volume (bbl)
15.00	SOCM 15%O 85%M	0.11

Gas Rates

Choke (inches)	Pressure (psig)	Gas Rate (Mcf/d)

* Recovery from multiple tests



**TRILOBITE
TESTING, INC**

DRILL STEM TEST REPORT

TOOL DIAGRAM

Dreiling Oil, Inc.

20-13s-17w Ellis,KS

PO Box 550
Hays, KS 67601

Dreiling Trust #2

Job Ticket: 60501

DST#: 3

ATTN: Roger Fisher

Test Start: 2014.08.06 @ 04:03:22

Tool Information

Drill Pipe:	Length: 3287.00 ft	Diameter: 3.80 inches	Volume: 46.11 bbl	Tool Weight:	2000.00 lb
Heavy Wt. Pipe:	Length: 279.00 ft	Diameter: 2.70 inches	Volume: 1.98 bbl	Weight set on Packer:	20000.00 lb
Drill Collar:	Length: 0.00 ft	Diameter: 2.25 inches	Volume: 0.00 bbl	Weight to Pull Loose:	60000.00 lb
			<u>Total Volume: 48.09 bbl</u>	Tool Chased	0.00 ft
Drill Pipe Above KB:	21.00 ft			String Weight: Initial	54000.00 lb
Depth to Top Packer:	3565.00 ft			Final	54000.00 lb
Depth to Bottom Packer:	ft				
Interval between Packers:	37.00 ft				
Tool Length:	57.00 ft				
Number of Packers:	2	Diameter: 6.75 inches			
Tool Comments:					

Tool Description

Tool Description	Length (ft)	Serial No.	Position	Depth (ft)	Accum. Lengths
Shut In Tool	5.00			3550.00	
Hydraulic tool	5.00			3555.00	
Packer	5.00			3560.00	20.00 Bottom Of Top Packer
Packer	5.00			3565.00	
Stubb	1.00			3566.00	
Perforations	11.00			3577.00	
Recorder	0.00	8897	Inside	3577.00	
Recorder	0.00	8898	Outside	3577.00	
Perforations	22.00			3599.00	
Bullnose	3.00			3602.00	37.00 Bottom Packers & Anchor
Total Tool Length:	57.00				



**TRILOBITE
TESTING, INC**

DRILL STEM TEST REPORT

FLUID SUMMARY

Dreiling Oil, Inc.

20-13s-17w Ellis,KS

PO Box 550
Hays, KS 67601

Dreiling Trust #2

Job Ticket: 60501

DST#: 3

ATTN: Roger Fisher

Test Start: 2014.08.06 @ 04:03:22

Mud and Cushion Information

Mud Type: Gel Chem

Cushion Type:

Oil API:

deg API

Mud Weight: 9.00 lb/gal

Cushion Length:

ft

Water Salinity:

ppm

Viscosity: 51.00 sec/qt

Cushion Volume:

bbbl

Water Loss: 9.58 in³

Gas Cushion Type:

Resistivity: ohm.m

Gas Cushion Pressure:

psig

Salinity: 9000.00 ppm

Filter Cake: 1.00 inches

Recovery Information

Recovery Table

Length ft	Description	Volume bbbl
15.00	SOCM 15%O 85%M	0.106

Total Length: 15.00 ft Total Volume: 0.106 bbl

Num Fluid Samples: 0

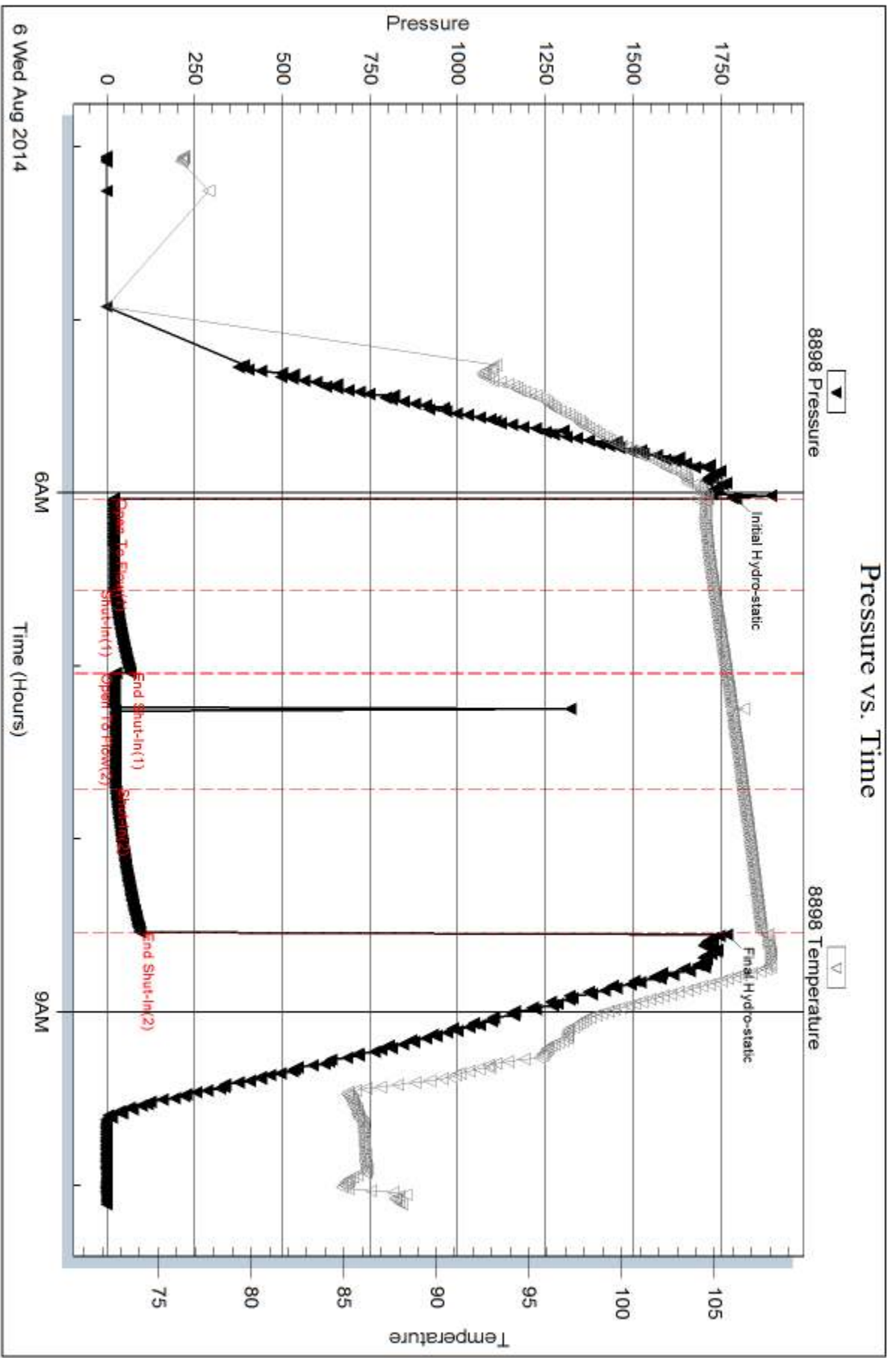
Num Gas Bombs: 0

Serial #:

Laboratory Name:

Laboratory Location:

Recovery Comments:



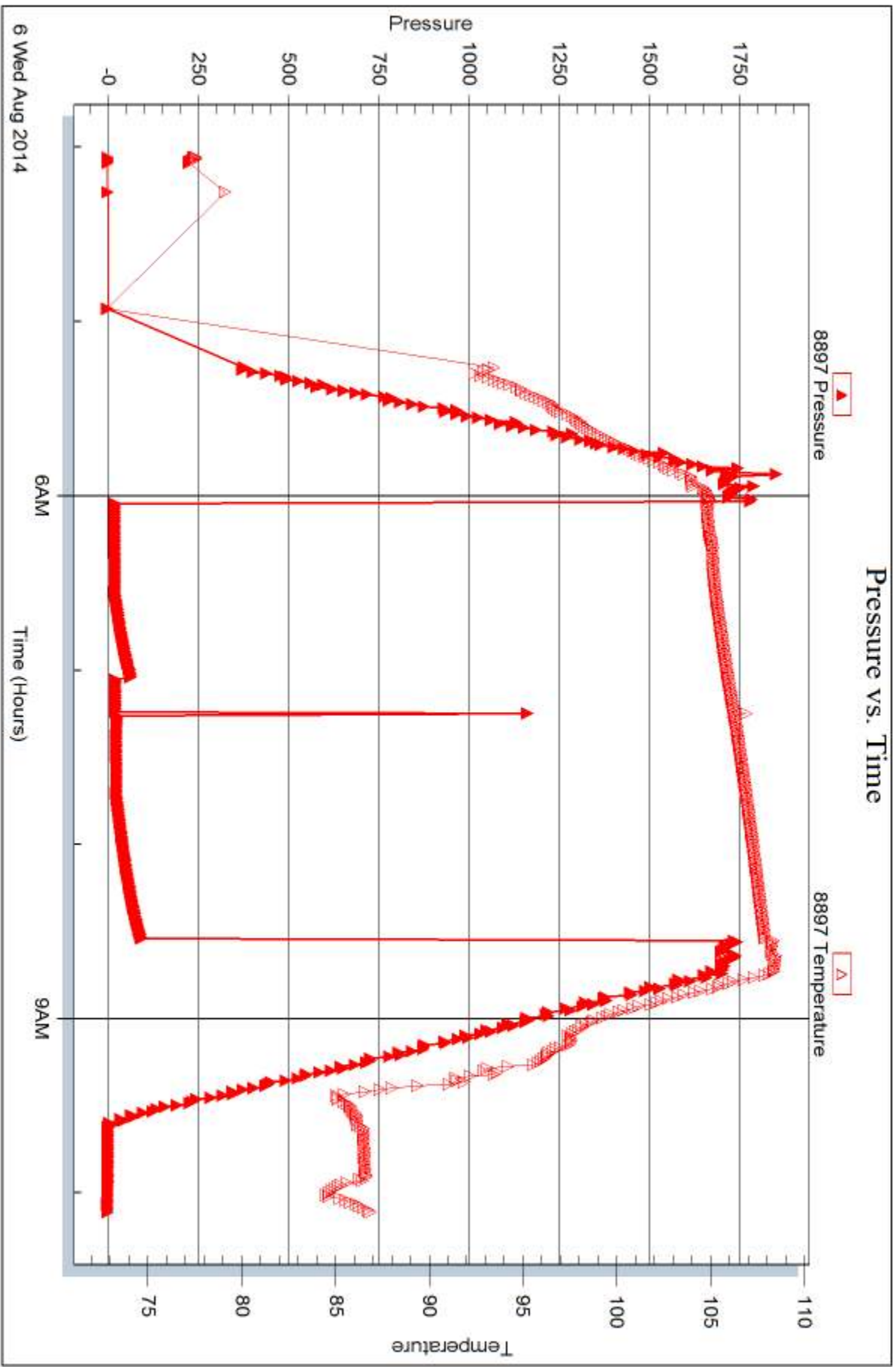
Serial #: 8897

Inside

Dreiling Oil, Inc.

Dreiling Trust#2

DST Test Number: 3



Triobite Testing, Inc

Ref. No: 60501

Printed: 2014.08.07 @ 16:10:26



DRILL STEM TEST REPORT

Prepared For: **Dreiling Oil, Inc.**

PO Box 550
Hays, KS 67601

ATTN: Roger Fisher

Dreiling Trust #2

20-13s-17w Ellis,KS

Start Date: 2014.08.06 @ 16:40:25

End Date: 2014.08.06 @ 22:53:25

Job Ticket #: 60502 DST #: 4

Trilobite Testing, Inc
1515 Commerce Parkway Hays, KS 67601
ph: 785-625-4778 fax: 785-625-5620

Printed: 2014.08.07 @ 16:09:56



TRILOBITE TESTING, INC

DRILL STEM TEST REPORT

Dreiling Oil, Inc.

20-13s-17w Ellis,KS

PO Box 550
Hays, KS 67601

Dreiling Trust #2

Job Ticket: 60502

DST#: 4

ATTN: Roger Fisher

Test Start: 2014.08.06 @ 16:40:25

GENERAL INFORMATION:

Formation: **Arbuckle**

Deviated: No Whipstock: ft (KB)

Time Tool Opened: 18:22:35

Time Test Ended: 22:53:25

Test Type: Conventional Bottom Hole (Reset)

Tester: Tate Lang

Unit No: 77

Interval: 3604.00 ft (KB) To 3614.00 ft (KB) (TVD)

Reference Elevations: 2046.00 ft (KB)

Total Depth: 3614.00 ft (KB) (TVD)

2038.00 ft (CF)

Hole Diameter: 7.88 inches Hole Condition: Good

KB to GR/CF: 8.00 ft

Serial #: 8898 Outside

Press@RunDepth: 33.59 psig @ 3605.00 ft (KB)

Capacity: 8000.00 psig

Start Date: 2014.08.06

End Date:

2014.08.06

Last Calib.:

2014.08.06

Start Time:

16:40:26

End Time:

22:53:25

Time On Btm:

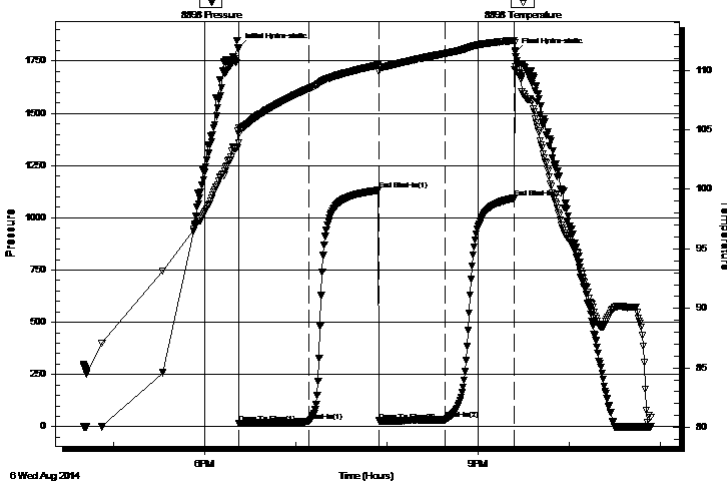
2014.08.06 @ 18:22:25

Time Off Btm:

2014.08.06 @ 21:24:25

TEST COMMENT: Weak surface blow built to 1"
Dead no blow back
Weak surface blow built to 1/4"
Dead no blow back

Pressure vs. Time



PRESSURE SUMMARY

Time (Min.)	Pressure (psig)	Temp (deg F)	Annotation
0	1812.94	105.17	Initial Hydro-static
1	15.71	103.94	Open To Flow (1)
47	24.77	108.46	Shut-In(1)
92	1131.81	110.44	End Shut-In(1)
93	28.10	109.88	Open To Flow (2)
136	33.59	111.41	Shut-In(2)
181	1093.74	112.51	End Shut-In(2)
182	1792.83	111.65	Final Hydro-static

Recovery

Length (ft)	Description	Volume (bbl)
20.00	OCM 40%O 60%M	0.14
30.00	100%O	0.21

* Recovery from multiple tests

Gas Rates

	Choke (inches)	Pressure (psig)	Gas Rate (Mcf/d)



TRILOBITE TESTING, INC.

DRILL STEM TEST REPORT

Dreiling Oil, Inc.
PO Box 550
Hays, KS 67601
ATTN: Roger Fisher

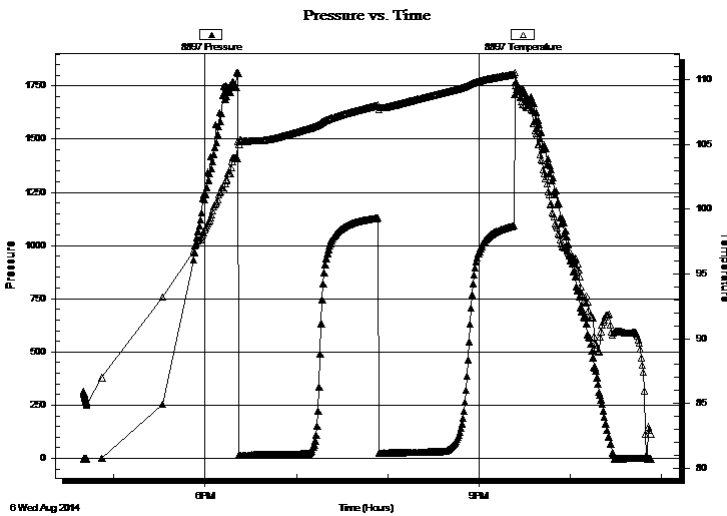
20-13s-17w Ellis, KS
Dreiling Trust #2
Job Ticket: 60502 **DST#: 4**
Test Start: 2014.08.06 @ 16:40:25

GENERAL INFORMATION:

Formation: Arbuckle		Test Type: Conventional Bottom Hole (Reset)
Deviated: No Whipstock: ft (KB)		Tester: Tate Lang
Time Tool Opened: 18:22:35		Unit No: 77
Time Test Ended: 22:53:25		Reference Elevations: 2046.00 ft (KB)
Interval: 3604.00 ft (KB) To 3614.00 ft (KB) (TVD)		2038.00 ft (CF)
Total Depth: 3614.00 ft (KB) (TVD)		KB to GR/CF: 8.00 ft
Hole Diameter: 7.88 inches	Hole Condition: Good	

Serial #: 8897 Inside		Capacity: 8000.00 psig
Press@RunDepth: psig @ 3605.00 ft (KB)		Last Calib.: 2014.08.06
Start Date: 2014.08.06 End Date: 2014.08.06		Time On Btm:
Start Time: 16:40:05 End Time: 22:53:04		Time Off Btm:

TEST COMMENT: Weak surface blow built to 1"
Dead no blow back
Weak surface blow built to 1/4"
Dead no blow back



PRESSURE SUMMARY

Time (Min.)	Pressure (psig)	Temp (deg F)	Annotation

Recovery

Length (ft)	Description	Volume (bbl)
20.00	OCM 40%O 60%M	0.14
30.00	100%O	0.21

* Recovery from multiple tests

Gas Rates

	Choke (inches)	Pressure (psig)	Gas Rate (Mcf/d)



**TRILOBITE
TESTING, INC**

DRILL STEM TEST REPORT

TOOL DIAGRAM

Dreiling Oil, Inc.

20-13s-17w Ellis,KS

PO Box 550
Hays, KS 67601

Dreiling Trust #2

Job Ticket: 60502

DST#: 4

ATTN: Roger Fisher

Test Start: 2014.08.06 @ 16:40:25

Tool Information

Drill Pipe:	Length: 3318.00 ft	Diameter: 3.80 inches	Volume: 46.54 bbl	Tool Weight: 2000.00 lb
Heavy Wt. Pipe:	Length: 279.00 ft	Diameter: 2.70 inches	Volume: 1.98 bbl	Weight set on Packer: 20000.00 lb
Drill Collar:	Length: 0.00 ft	Diameter: 2.25 inches	Volume: 0.00 bbl	Weight to Pull Loose: 65000.00 lb
			<u>Total Volume: 48.52 bbl</u>	Tool Chased 0.00 ft
Drill Pipe Above KB:	13.00 ft			String Weight: Initial 54000.00 lb
Depth to Top Packer:	3604.00 ft			Final 54000.00 lb
Depth to Bottom Packer:	ft			
Interval between Packers:	10.00 ft			
Tool Length:	30.00 ft			
Number of Packers:	2	Diameter: 6.75 inches		

Tool Comments:

Tool Description	Length (ft)	Serial No.	Position	Depth (ft)	Accum. Lengths
------------------	-------------	------------	----------	------------	----------------

Shut In Tool	5.00			3589.00	
Hydraulic tool	5.00			3594.00	
Packer	5.00			3599.00	20.00 Bottom Of Top Packer
Packer	5.00			3604.00	
Stubb	1.00			3605.00	
Recorder	0.00	8897	Inside	3605.00	
Recorder	0.00	8898	Outside	3605.00	
perforations	6.00			3611.00	
Bullnose	3.00			3614.00	10.00 Bottom Packers & Anchor
Total Tool Length:	30.00				



**TRILOBITE
TESTING, INC**

DRILL STEM TEST REPORT

FLUID SUMMARY

Dreiling Oil, Inc.

20-13s-17w Ellis,KS

PO Box 550
Hays, KS 67601

Dreiling Trust #2

Job Ticket: 60502

DST#: 4

ATTN: Roger Fisher

Test Start: 2014.08.06 @ 16:40:25

Mud and Cushion Information

Mud Type: Gel Chem

Cushion Type:

Oil API:

deg API

Mud Weight: 9.00 lb/gal

Cushion Length:

ft

Water Salinity:

ppm

Viscosity: 48.00 sec/qt

Cushion Volume:

bbbl

Water Loss: 8.79 in³

Gas Cushion Type:

Resistivity: ohm.m

Gas Cushion Pressure:

psig

Salinity: 6000.00 ppm

Filter Cake: 1.00 inches

Recovery Information

Recovery Table

Length ft	Description	Volume bbbl
20.00	OCM 40%O 60%M	0.142
30.00	100%O	0.212

Total Length: 50.00 ft Total Volume: 0.354 bbl

Num Fluid Samples: 0

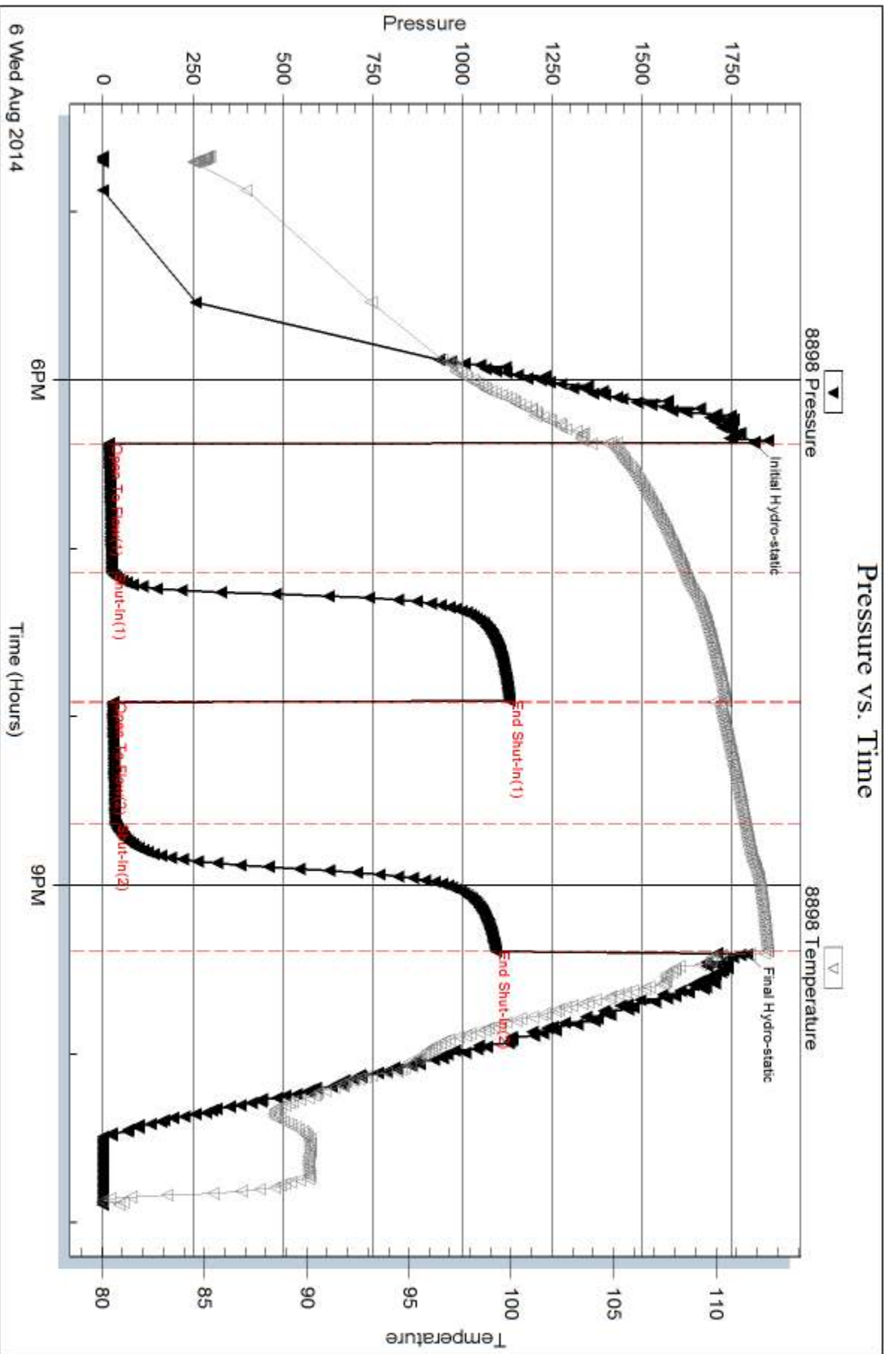
Num Gas Bombs: 0

Serial #:

Laboratory Name:

Laboratory Location:

Recovery Comments:



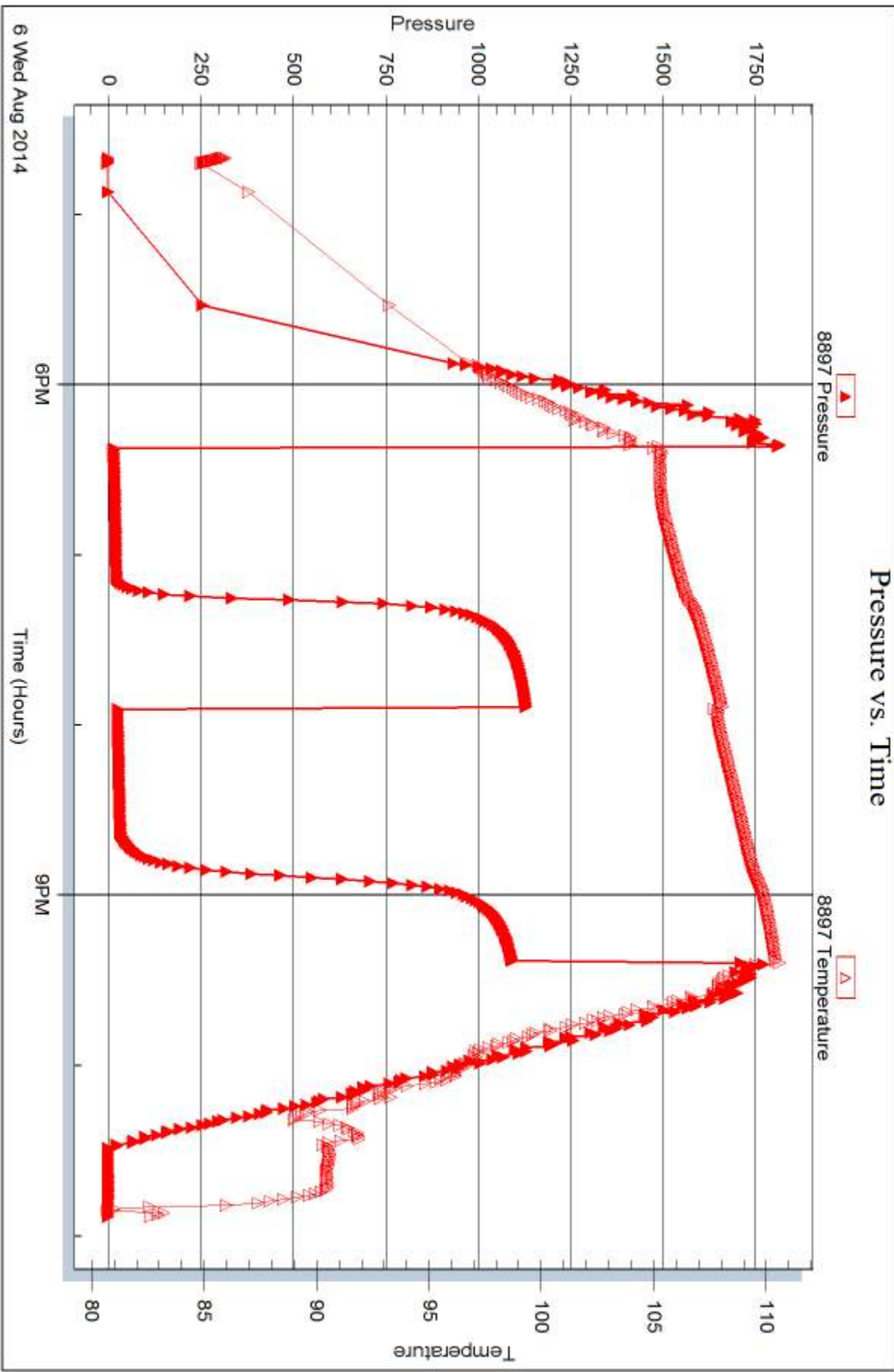
Serial #: 8897

Inside

Dreiling Oil, Inc.

Dreiling Trust#2

DST Test Number: 4



Trilobite Testing, Inc

Ref. No: 60502

Printed: 2014.08.07 @ 16:09:57



DRILL STEM TEST REPORT

Prepared For: **Dreiling Oil, Inc.**

PO Box 550
Hays, KS 67601

ATTN: Roger Fisher

Dreiling Trust #2

20-13s-17w Ellis,KS

Start Date: 2014.08.07 @ 05:02:05

End Date: 2014.08.07 @ 12:43:25

Job Ticket #: 60503 DST #: 5

Trilobite Testing, Inc
1515 Commerce Parkway Hays, KS 67601
ph: 785-625-4778 fax: 785-625-5620

Printed: 2014.08.07 @ 16:08:21



**TRILOBITE
TESTING, INC**

DRILL STEM TEST REPORT

Dreiling Oil, Inc.

20-13s-17w Ellis,KS

PO Box 550
Hays, KS 67601

Dreiling Trust #2

Job Ticket: 60503

DST#: 5

ATTN: Roger Fisher

Test Start: 2014.08.07 @ 05:02:05

GENERAL INFORMATION:

Formation: **Arbuckle**

Deviated: No Whipstock: ft (KB)

Time Tool Opened: 07:28:25

Time Test Ended: 12:43:25

Test Type: Conventional Bottom Hole (Reset)

Tester: Tate Lang

Unit No: 77

Interval: 3618.00 ft (KB) To 3628.00 ft (KB) (TVD)

Reference Elevations: 2046.00 ft (KB)

Total Depth: 3628.00 ft (KB) (TVD)

2038.00 ft (CF)

Hole Diameter: 7.88 inches Hole Condition: Good

KB to GR/CF: 8.00 ft

Serial #: 8898 Outside

Press@RunDepth: 125.74 psig @ 3619.00 ft (KB)

Capacity: 8000.00 psig

Start Date: 2014.08.07

End Date:

2014.08.07

Last Calib.:

2014.08.07

Start Time: 05:02:06

End Time:

12:43:25

Time On Btm:

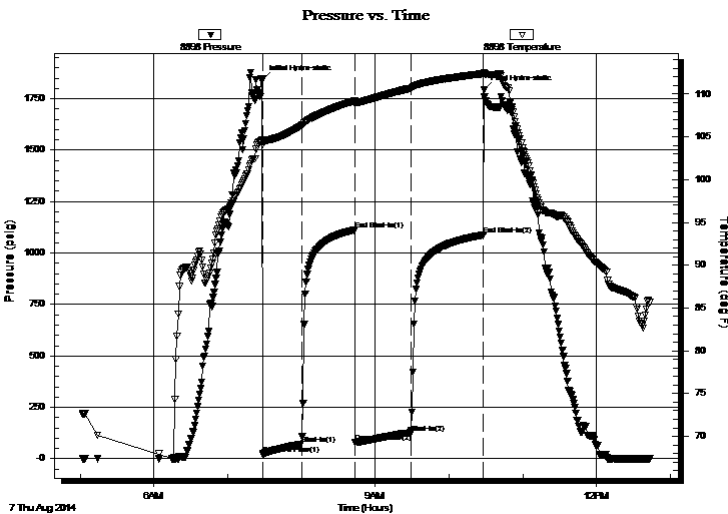
2014.08.07 @ 07:28:05

Time Off Btm:

2014.08.07 @ 10:28:35

TEST COMMENT: Good blow built to 7"
Weak surface blow back
Strong blow built to 10"
Weak surface blow back

PRESSURE SUMMARY



Time (Min.)	Pressure (psig)	Temp (deg F)	Annotation
0	1841.75	104.65	Initial Hydro-static
1	23.32	104.09	Open To Flow (1)
32	71.41	106.28	Shut-In(1)
76	1111.08	109.19	End Shut-In(1)
76	77.70	108.85	Open To Flow (2)
121	125.74	110.68	Shut-In(2)
180	1087.60	112.38	End Shut-In(2)
181	1792.12	112.54	Final Hydro-static

Recovery

Length (ft)	Description	Volume (bbl)
60.00	OCMW 20%O 70%W 10%M	0.42
60.00	WCMO 60%O 10%W 30%M	0.42
150.00	GO 5%G 95O	1.06

Gas Rates

	Choke (inches)	Pressure (psig)	Gas Rate (Mcf/d)

* Recovery from multiple tests



DRILL STEM TEST REPORT

Dreiling Oil, Inc.

20-13s-17w Ellis,KS

PO Box 550
Hays, KS 67601

Dreiling Trust #2

Job Ticket: 60503

DST#: 5

ATTN: Roger Fisher

Test Start: 2014.08.07 @ 05:02:05

GENERAL INFORMATION:

Formation: **Arbuckle**

Deviated: No Whipstock: ft (KB)

Time Tool Opened: 07:28:25

Time Test Ended: 12:43:25

Test Type: Conventional Bottom Hole (Reset)

Tester: Tate Lang

Unit No: 77

Interval: 3618.00 ft (KB) To 3628.00 ft (KB) (TVD)

Reference Elevations: 2046.00 ft (KB)

Total Depth: 3628.00 ft (KB) (TVD)

2038.00 ft (CF)

Hole Diameter: 7.88 inches Hole Condition: Good

KB to GR/CF: 8.00 ft

Serial #: 8897 Inside

Press@RunDepth: psig @ 3619.00 ft (KB)

Capacity: 8000.00 psig

Start Date: 2014.08.07 End Date: 2014.08.07

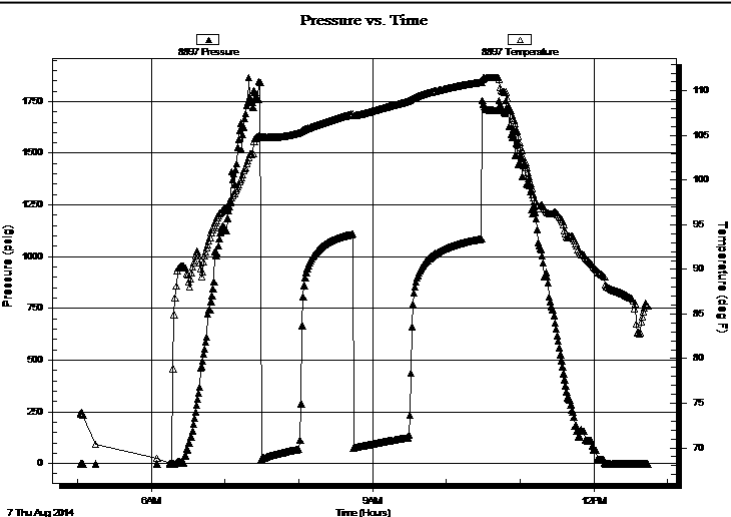
Last Calib.: 2014.08.07

Start Time: 05:02:37 End Time: 12:43:46

Time On Btm:

Time Off Btm:

TEST COMMENT: Good blow built to 7"
Weak surface blow back
Strong blow built to 10"
Weak surface blow back



PRESSURE SUMMARY

Time (Min.)	Pressure (psig)	Temp (deg F)	Annotation

Recovery

Length (ft)	Description	Volume (bbl)
60.00	OCMW 20%O 70%W 10%M	0.42
60.00	WCMO 60%O 10%W 30%M	0.42
150.00	GO 5%G 95O	1.06

Gas Rates

	Choke (inches)	Pressure (psig)	Gas Rate (Mcf/d)

* Recovery from multiple tests



**TRILOBITE
TESTING, INC**

DRILL STEM TEST REPORT

TOOL DIAGRAM

Dreiling Oil, Inc.

20-13s-17w Ellis,KS

PO Box 550
Hays, KS 67601

Dreiling Trust #2

Job Ticket: 60503

DST#: 5

ATTN: Roger Fisher

Test Start: 2014.08.07 @ 05:02:05

Tool Information

Drill Pipe:	Length: 3350.00 ft	Diameter: 3.80 inches	Volume: 46.99 bbl	Tool Weight:	2000.00 lb
Heavy Wt. Pipe:	Length: 279.00 ft	Diameter: 2.70 inches	Volume: 1.98 bbl	Weight set on Packer:	20000.00 lb
Drill Collar:	Length: 0.00 ft	Diameter: 2.25 inches	Volume: 0.00 bbl	Weight to Pull Loose:	58000.00 lb
			<u>Total Volume: 48.97 bbl</u>	Tool Chased	0.00 ft
Drill Pipe Above KB:	31.00 ft			String Weight: Initial	54000.00 lb
Depth to Top Packer:	3618.00 ft			Final	56000.00 lb
Depth to Bottom Packer:	ft				
Interval between Packers:	10.00 ft				
Tool Length:	30.00 ft				
Number of Packers:	2	Diameter: 6.75 inches			
Tool Comments:					

Tool Description

Tool Description	Length (ft)	Serial No.	Position	Depth (ft)	Accum. Lengths
Shut In Tool	5.00			3603.00	
Hydraulic tool	5.00			3608.00	
Packer	5.00			3613.00	20.00 Bottom Of Top Packer
Packer	5.00			3618.00	
Stubb	1.00			3619.00	
Recorder	0.00	8897	Inside	3619.00	
Recorder	0.00	8898	Outside	3619.00	
Perforations	6.00			3625.00	
Bullnose	3.00			3628.00	10.00 Bottom Packers & Anchor
Total Tool Length:	30.00				



**TRILOBITE
TESTING, INC**

DRILL STEM TEST REPORT

FLUID SUMMARY

Dreiling Oil, Inc.

20-13s-17w Ellis,KS

PO Box 550
Hays, KS 67601

Dreiling Trust #2

Job Ticket: 60503

DST#: 5

ATTN: Roger Fisher

Test Start: 2014.08.07 @ 05:02:05

Mud and Cushion Information

Mud Type: Gel Chem

Cushion Type:

Oil API:

deg API

Mud Weight: 9.00 lb/gal

Cushion Length:

ft

Water Salinity:

ppm

Viscosity: 48.00 sec/qt

Cushion Volume:

bbbl

Water Loss: 8.79 in³

Gas Cushion Type:

Resistivity: ohm.m

Gas Cushion Pressure:

psig

Salinity: 6000.00 ppm

Filter Cake: 1.00 inches

Recovery Information

Recovery Table

Length ft	Description	Volume bbbl
60.00	OCMW 20%O 70%W 10%M	0.425
60.00	WCMO 60%O 10%W 30%M	0.425
150.00	GO 5%G 95O	1.062

Total Length: 270.00 ft

Total Volume: 1.912 bbl

Num Fluid Samples: 0

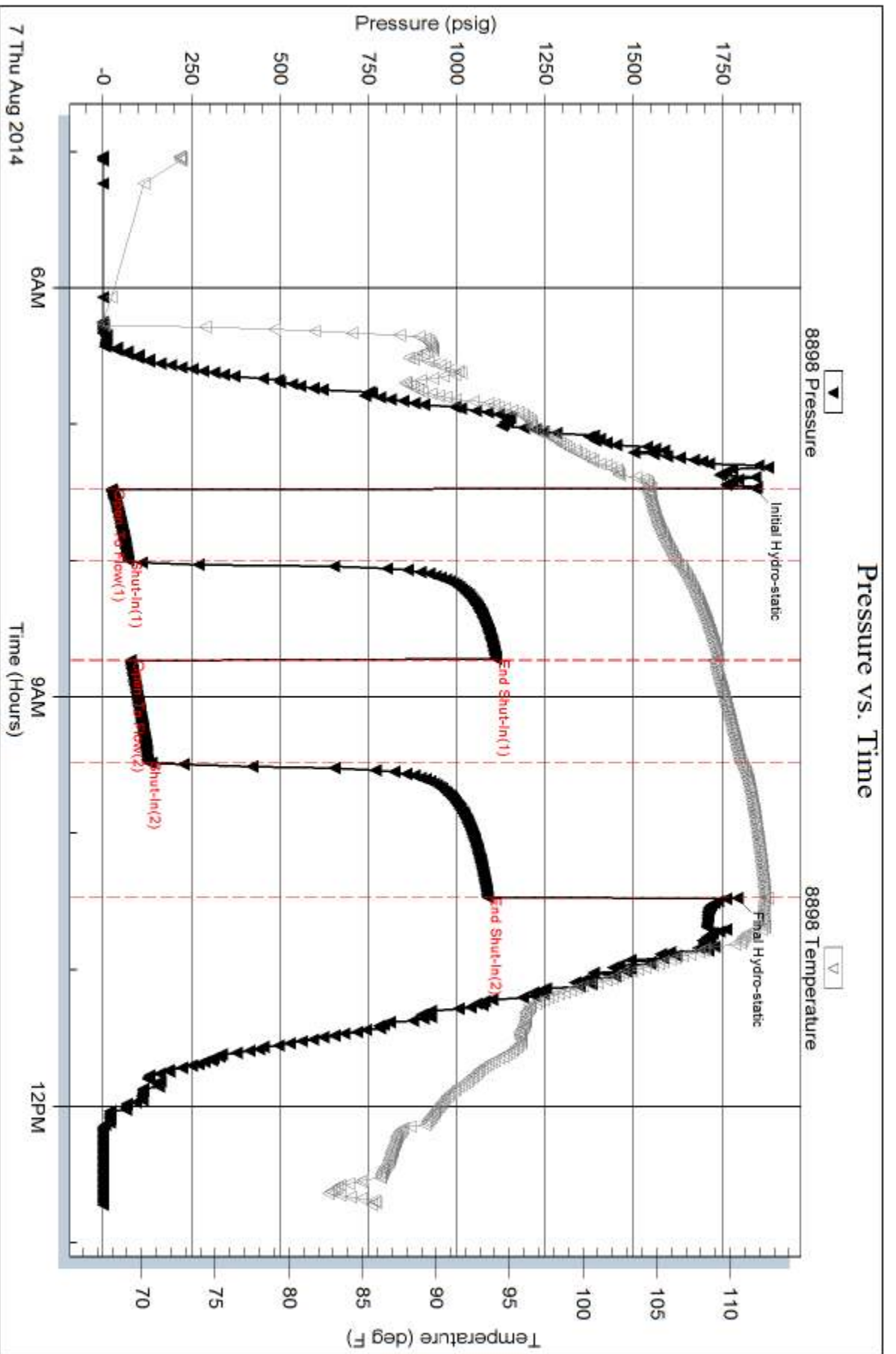
Num Gas Bombs: 0

Serial #:

Laboratory Name:

Laboratory Location:

Recovery Comments:



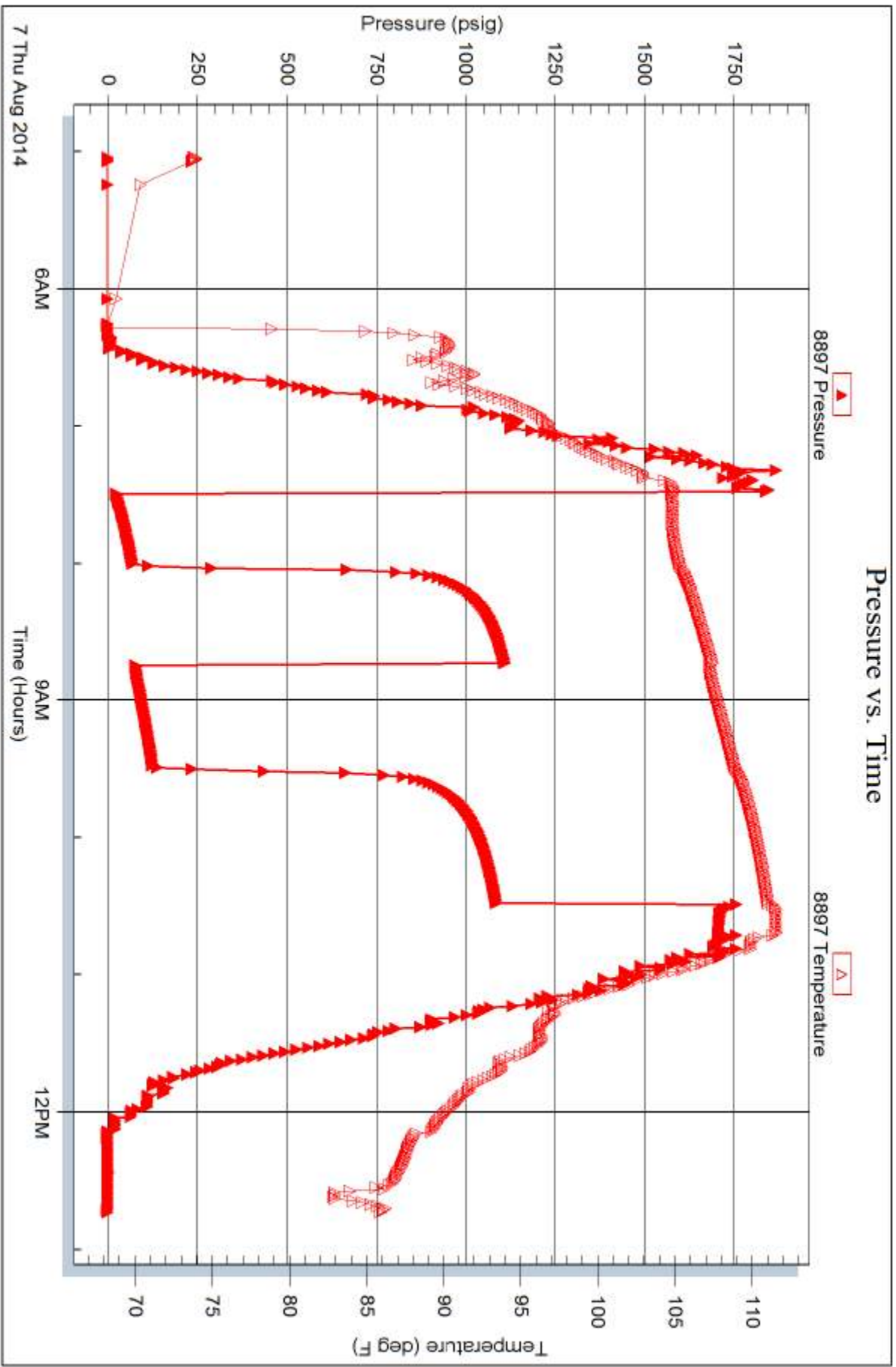
Serial #: 8897

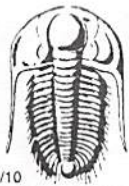
Inside

Dreiling Oil, Inc.

Dreiling Trust#2

DST Test Number: 5





TRILOBITE TESTING INC.

1515 Commerce Parkway • Hays, Kansas 67601

Test Ticket

NO. 58924

Well Name & No. Dreiling Trust # 2 Test No. 1 Date 8/4/85
 Company Dreiling Oil Inc. Elevation 2046 KB 2058 GL
 Address 1008 Cody Ave Box 550 Hays KS 67601
 Co. Rep / Geo. Roger Fisher Rig Discovery # 2
 Location: Sec. 20 Twp. 13 Rge. 17 Co. Ellis State KS

Interval Tested 3330 3440 Zone Tested A-G
 Anchor Length 110 Drill Pipe Run 3038 Mud Wt. 8.9
 Top Packer Depth 3325 Drill Collars Run 0 Vis 52
 Bottom Packer Depth 3330 Wt. Pipe Run 279 WL 8.8
 Total Depth 3440 Chlorides 4800 ppm System LCM 2#

Blow Description Fair blow built to 4 in
Dead no blow back
Wear surface blow built to 2 in
Dead no blow back

Rec	Feet of	%gas	%oil	%water	%mud
Rec <u>75</u>	Feet of <u>mud with show of oil on top</u>				<u>100</u>
Rec	Feet of	%gas	%oil	%water	%mud
Rec <u>75</u>	Feet of	%gas	%oil	%water	%mud

Rec Total 75 BHT 107 Gravity 1150 API RW @ 18.60 ° F Chlorides ppm
 (A) Initial Hydrostatic 1675 Test 2140
 (B) First Initial Flow 25 Jars 0000
 (C) First Final Flow 45 Safety Joint 0148
 (D) Initial Shut-In 229 Circ Sub 0448
 (E) Second Initial Flow 46 Hourly Standby 0621
 (F) Second Final Flow 61 Mileage 12 R/T 18.60
 (G) Final Shut-In 199 Sampler
 (H) Final Hydrostatic 1630 Straddle Ruined Shale Packer
 Shale Packer Ruined Packer
 Extra Packer Extra Copies
 Extra Recorder
 Day Standby
 Accessibility

Initial Open 30
 Initial Shut-In 45
 Final Flow 45
 Final Shut-In 60
 Sub Total 0
 Total 1168.60
 MP/DST Disc't

Approved By _____ Our Representative [Signature]
 TriLOBITE TESTING INC. shall not be liable for damaged of any kind of the property or personnel of the one for whom a test is made, or for any loss suffered or sustained, directly or indirectly, through the use of its equipment, or its statements or opinion concerning the results of any test, tools lost or damaged in the hole shall be paid for at cost by the party for whom the test is made.



TRILOBITE TESTING INC.

1515 Commerce Parkway • Hays, Kansas 67601

Test Ticket

NO. 58925

Well Name & No. Dreiling Trust #2 Test No. 2 Date 8-5-14
 Company Dreiling Oil Inc. Elevation 2046 KB 2038 GL
 Address _____
 Co. Rep / Geo. Roger Fisher Rig Discovery #2
 Location: Sec. 20 Twp. 13 Rge. 17 Co. Ellis State Ks

Interval Tested 3468 3530 Zone Tested H-5
 Anchor Length 62 Drill Pipe Run 3193 Mud Wt. 9.2
 Top Packer Depth 3463 Drill Collars Run 0 Vis 51
 Bottom Packer Depth 3468 Wt. Pipe Run 278 WL 9.6
 Total Depth 3530 Chlorides 9000 ppm System LCM 1 1/2 TR

Blow Description Weak surface blow
Dead No blow back:
Pulled 100'

Rec	Feet of	%gas	%oil	%water	%mud
Rec <u>1</u>	Feet of <u>Mud wit Oil spots</u>				<u>100</u>
Rec _____	Feet of _____				
Rec _____	Feet of _____				
Rec _____	Feet of _____				

Rec Total 1 BHT 105 Gravity _____ API RW _____ @ _____ ° F Chlorides _____ ppm
 (A) Initial Hydrostatic 1788 Test 1150 T-On Location 1415
 (B) First Initial Flow 22 Jars _____ T-Started 1500
 (C) First Final Flow 24 Safety Joint _____ T-Open 1641
 (D) Initial Shut-In 214 Circ Sub _____ T-Pulled 1741
 (E) Second Initial Flow _____ Hourly Standby _____ T-Out 1908
 (F) Second Final Flow NA Mileage 18.60 Comments _____
 (G) Final Shut-In _____ Sampler _____
 (H) Final Hydrostatic 1754 Straddle _____ Ruined Shale Packer _____

Initial Open 30 Shale Packer _____ Ruined Packer _____
 Initial Shut-In 30 Extra Packer _____ Extra Copies _____
 Final Flow PULL IT Extra Recorder _____ Sub Total 0
 Final Shut-In _____ Day Standby _____ Total 1168.60
 Accessibility _____ MP/DST Disc't _____
 Sub Total 1168.60

Approved By _____ Our Representative [Signature]
 Trilobite Testing Inc. shall not be liable for damaged of any kind of the property or personnel of the one for whom a test is made, or for any loss suffered or sustained, directly or indirectly, through the use of its equipment, or its statements or opinion concerning the results of any test, tools lost or damaged in the hole shall be paid for at cost by the party for whom the test is made.



TRILOBITE TESTING INC.

1515 Commerce Parkway • Hays, Kansas 67601

Test Ticket

NO. 60501

4/10

Well Name & No. Dreiling Trust #2 Test No. 3 Date 8-6-14
 Company Dreiling Oil Inc Elevation 2046 KB 2038 GL
 Address _____
 Co. Rep / Geo. Roger Fisher Rig Discovery # 2
 Location: Sec. 20 Twp. 13 Rge. 17 Co. Ellis State KS

Interval Tested 3565 3602 Zone Tested Arbuckle
 Anchor Length 37 Drill Pipe Run _____ Mud Wt. 9.2
 Top Packer Depth 3560 Drill Collars Run 0 Vis 51
 Bottom Packer Depth 3565 Wt. Pipe Run 279 WL 9.6
 Total Depth 3602 Chlorides 9000 ppm System LCM 1 1/2 #

Blow Description Weak surface blow
Dead no blow back
Dead no blow Flushed tool @ 10 mins Weak surface blow
Dead no blow back

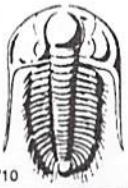
Rec	Feet of	%gas	%oil	%water	%mud
15	Show of Free Oil on top 50cm		15		85
Rec	Feet of	%gas	%oil	%water	%mud
Rec	Feet of	%gas	%oil	%water	%mud
Rec	Feet of	%gas	%oil	%water	%mud

Rec Total 15 BHT 106 Gravity _____ API RW _____ @ _____ °F Chlorides _____ ppm
 (A) Initial Hydrostatic 17.91 Test 1150 T-On Location 0340
 (B) First Initial Flow 20 Jars _____ T-Started 0403
 (C) First Final Flow 21 Safety Joint _____ T-Open 0602
 (D) Initial Shut-In 027 Circ Sub _____ T-Pulled 0832
 (E) Second Initial Flow 22 Hourly Standby _____ T-Out 1006
 (F) Second Final Flow 24 Mileage 18.60 Comments _____
 (G) Final Shut-In 95 Sampler _____
 (H) Final Hydrostatic 1767 Straddle _____ Ruined Shale Packer _____

Initial Open 30 Shale Packer _____ Ruined Packer _____
 Initial Shut-In 30 Extra Packer _____ Extra Copies _____
 Final Flow 10 Flush 35 Extra Recorder _____ Sub Total 0
 Final Shut-In 45 Day Standby _____ Total 1168.60
 Accessibility _____ MP/DST Disc't _____
 Sub Total 1168.60

Approved By _____ Our Representative [Signature]

Trilobite Testing Inc. shall not be liable for damaged of any kind of the property or personnel of the one for whom a test is made, or for any loss suffered or sustained, directly or indirectly, through the use of its equipment, or its statements or opinion concerning the results of any test, tools lost or damaged in the hole shall be paid for at cost by the party for whom the test is made.



TRILOBITE TESTING INC.

1515 Commerce Parkway • Hays, Kansas 67601

Test Ticket

NO. 60502

Well Name & No. Dreiling Trust #2 Test No. 4 Date 8-6-14
 Company Dreiling Oil INC Elevation 2046 KB 2038 GL
 Address _____
 Co. Rep / Geo. Roger Fisher Rig Discovery #2
 Location: Sec. 28 Twp. 13 Rge. 17 Co. Ellis State K

Interval Tested 3604 3614 Zone Tested Arbuckle
 Anchor Length 10 Drill Pipe Run 338 Mud Wt. 9.13
 Top Packer Depth 3599 Drill Collars Run 0 Vis 4.8
 Bottom Packer Depth 3604 Wt. Pipe Run 279 WL 8.8
 Total Depth 3614 Chlorides 6000 ppm System LCM 2.1

Blow Description Wealth surface built to lin
Dead no blow back
Wealth surface below built to 1/4 in
Dead no blow back

Rec	Feet of	%gas	%oil	%water	%mud
20					
20	Feet of <u>OCM</u>		40		60
30	Feet of <u>Clean Oil</u>		100		

Rec Total 50 BHT 112 Gravity _____ API RW _____ @ _____ °F Chlorides _____ ppm

(A) Initial Hydrostatic 18.3 Test 1150 T-On Location 16.25
 (B) First Initial Flow 16 Jars _____ T-Started 16.40
 (C) First Final Flow 25 Safety Joint _____ T-Open 18.32
 (D) Initial Shut-In 1132 Circ Sub _____ T-Pulled 21.32
 (E) Second Initial Flow 28 Hourly Standby _____ T-Out 22.53
 (F) Second Final Flow 34 Mileage 18.60 Comments _____
 (G) Final Shut-In 1094 Sampler _____
 (H) Final Hydrostatic 1793 Straddle _____ Ruined Shale Packer _____
 Shale Packer _____ Ruined Packer _____
 Extra Packer _____ Extra Copies _____
 Initial Open 45 Extra Recorder _____ Sub Total 0
 Initial Shut-In 45 Day Standby _____ Total 1168.60
 Final Flow 45 Accessibility _____ MP/DST Disc't _____
 Final Shut-In 45 Sub Total 1168.60

Approved By _____ Our Representative [Signature]
 Trilobite Testing Inc. shall not be liable for damaged of any kind of the property or personnel of the one for whom a test is made, or for any loss suffered or sustained, directly or indirectly, through the use of its equipment, or its statements or opinion concerning the results of any test, tools lost or damaged in the hole shall be paid for at cost by the party for whom the test is made.



TRILOBITE TESTING INC.

1515 Commerce Parkway • Hays, Kansas 67601

Test Ticket

NO. 60503

Well Name & No. Dreiling Trust #2 Test No. 5 Date 8-7-14
 Company Dreiling Oil INC Elevation 2046 KB 2038 GL
 Address _____
 Co. Rep / Geo. Roger Fisher Rig Discovery #2
 Location: Sec. 20 Twp. 13 Rge. 17 Co. Ellis State KS

Interval Tested 3618 3628 Zone Tested Arbuckle
 Anchor Length 10 Drill Pipe Run 3350 Mud Wt. 9.3
 Top Packer Depth 3613 Drill Collars Run 0 Vis 48
 Bottom Packer Depth 3618 Wt. Pipe Run 279 WL 8.8
 Total Depth 3628 Chlorides 6000 ppm System LCM 2#

Blow Description Good blow built to 7 in
Weat surface blow back
Strong blow built to 10 in
Weat surface blow back

Rec	Feet of	%gas	%oil	%water	%mud
<u>60</u>	<u>OCMw</u>	<u>20</u>	<u>70</u>	<u>10</u>	<u>0</u>
<u>60</u>	<u>UCMO</u>	<u>60</u>	<u>10</u>	<u>30</u>	<u>0</u>
<u>150</u>	<u>60</u>	<u>95</u>			
Rec	Feet of	%gas	%oil	%water	%mud
Rec	Feet of	%gas	%oil	%water	%mud

Rec Total 270 BHT 110 Gravity 34 API RW @ _____ °F Chlorides _____ ppm
 (A) Initial Hydrostatic 1842 Test _____ T-On Location 0450
 (B) First Initial Flow 23 Jars _____ T-Started 0502
 (C) First Final Flow 71 Safety Joint _____ T-Open 0729
 (D) Initial Shut-In 111 Circ Sub _____ T-Pulled 1029
 (E) Second Initial Flow 78 Hourly Standby _____ T-Out 1243
 (F) Second Final Flow 126 Mileage 18.60 Comments _____
 (G) Final Shut-In 1088 Sampler _____
 (H) Final Hydrostatic 1792 Straddle _____

Initial Open 30 Ruined Shale Packer _____
 Initial Shut-In 45 Ruined Packer _____
 Final Flow 45 Extra Packer _____
 Final Shut-In 60 Extra Recorder _____
 Sub Total 0 Total 1168.60
 Sub Total 1168.60 MP/DST Disc't _____

Approved By _____ Our Representative Roger Fisher
 Trilobite Testing Inc. shall not be liable for damaged of any kind of the property or personnel of the one for whom a test is made, or for any loss suffered or sustained, directly or indirectly, through the use of its equipment, or its statements or opinion concerning the results of any test, tools lost or damaged in the hole shall be paid for at cost by the party for whom the test is made.