

# GEOLOGIST'S REPORT

## DRILLING TIME AND SAMPLE LOG

**BACH OIL PRODUCTION**

**WELL: PETE' S POND #2**

LOC.: 780' FSL & 2634' FEL  
 SEC. 14-1-19W  
 PHILLIPS COUNTY, KANSAS  
 API: 15-147-20740-00-00

DRILLING CONTR.: MURFIN RIG #24  
 SPUD: 05-05-14 COMP: 05-09-14  
 MUD UP: 2782' TYPE MUD: CHEM.  
 DRILL TIME: 2900 to' RTD  
 RTD: 3540' LTD: 3542'  
 SAMPLES SAVED: 2900'-RTD  
 GEOLOGIST: ROBERT J. PETERSEN

### ELEVATION

KB: 2085  
 GL: 2080  
 LOG MEASURED  
 FROM: KB

### SURFACE CASING

8 5/8" Set @ 220'  
 W/175 SX 3% CC 2%gel

### PRODUCTION CASING

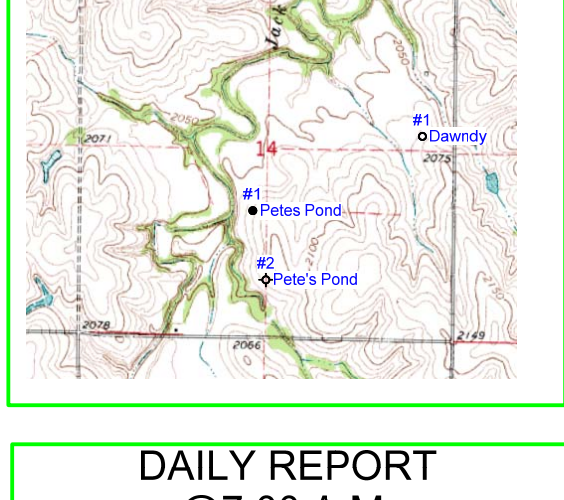
D&A

### WELL LOG SURVEYS

RAG

### ELECTRIC LOG TOPS

FORMATION	DEPTH	DATUM	POS.
Stone Corral	1714	+371	+5
Base Stone Corral	1738	+347	+2
Topeka	3070	-985	+1
Heebner	3275	-1190	+5
Toronto	3304	-1219	+1
Lansing	3320	-1235	+2
Muncie	3429	-1344	+4
Stark	3496	-1411	+2
LTD	3542	-1457	-



### REFERENCE WELL:

Bach Oil Production  
 Pete's Pond #1  
 NE SE NE SW  
 1750' FSL & 2416' FWL  
 14-1-19W

### DAILY REPORT @7:00 A.M.

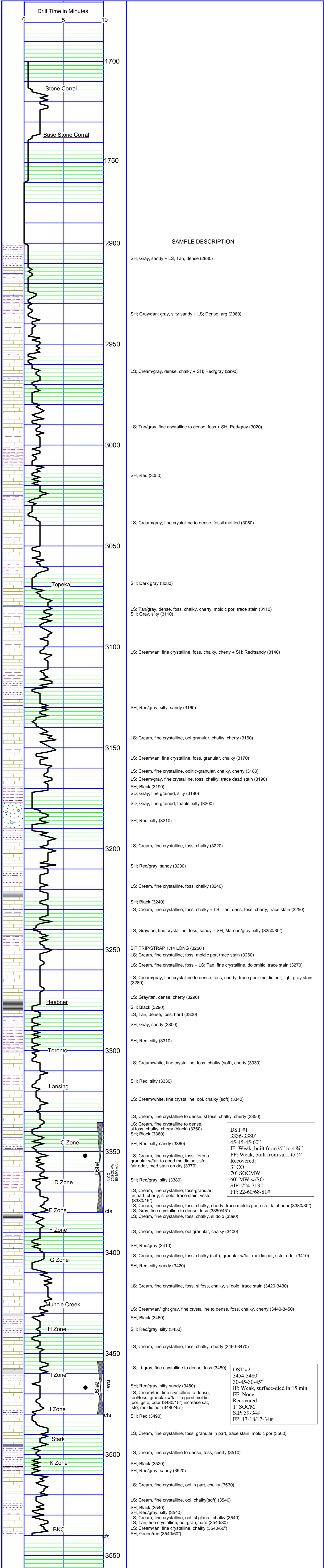
05-05-12 MIRU/SPUD  
 05-06-14 325'  
 05-07-14 2400'  
 05-08-14 3250'  
 05-09-14 3450'

### REMARKS AND RECOMMENDATIONS

Based upon the DST results this well was plugged and abandoned by the operator.

Respectfully submitted,

*Robert J. Petersen*  
 Robert J. Petersen



**DST #1**  
 3336-3380"  
 45-45-45-60"  
 IF: Weak, built from 1/2" to 4 3/4"  
 FF: Weak, built from surf. to 3/4"  
 Recovered:  
 3' CO  
 70' SOCMW  
 60' MW/W/SO  
 SIP: 724-713#  
 FP: 22-60/68-81#

**DST #2**  
 3454-3480"  
 30-45-30-45"  
 IF: Weak, surface-died in 15 min.  
 FF: None  
 Recovered:  
 1' SOCM  
 SIP: 39-34#  
 FP: 17-18/17-34#