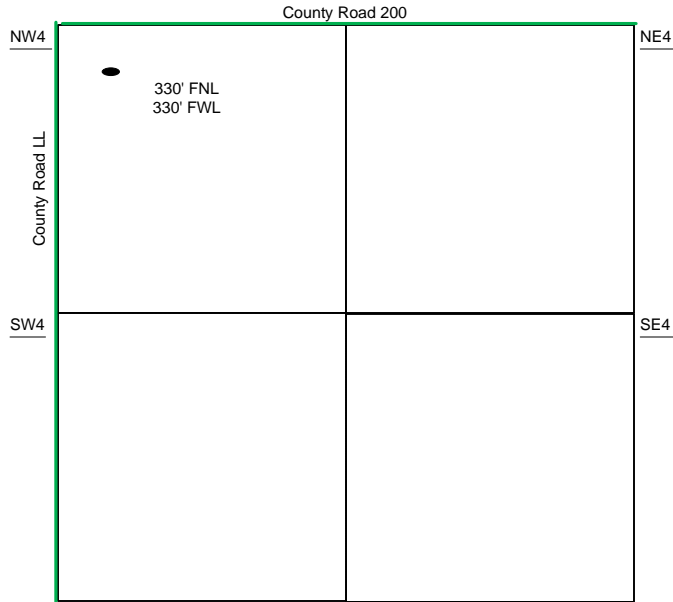
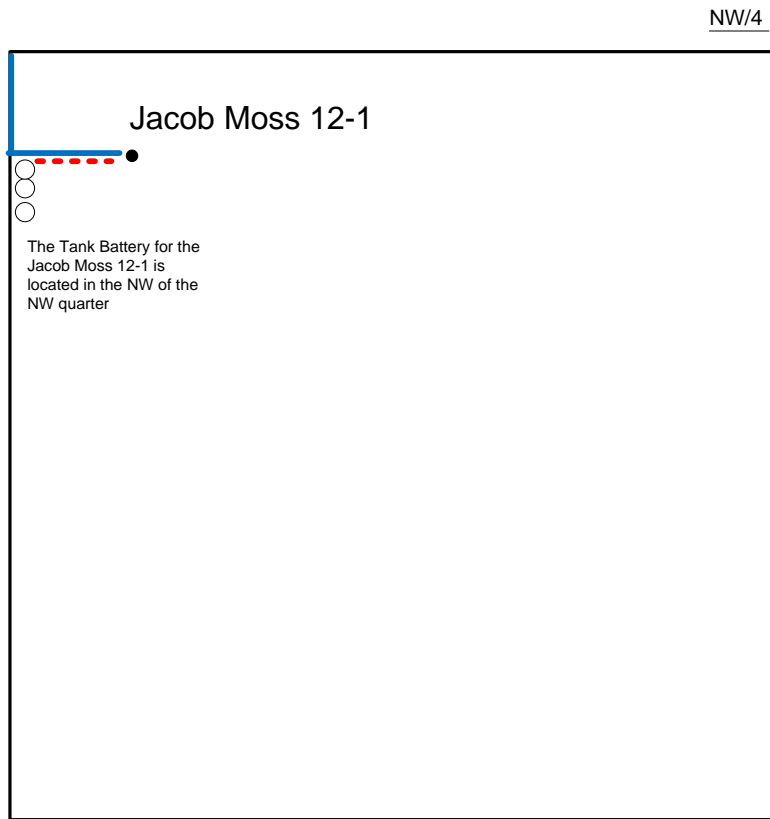


Proposed Plan of Construction

Jacob Moss 12-1
Sec 12 T30S-R33W
Haskell County, KS



Sec 12 – T30S – R33W



Proposed Details of
NW/4 Sec 12 – T30S – R33W

Proposed Site Diagram
Jacob Moss 12-1
August 25, 2014

Note-Drawing **Not** to Scale