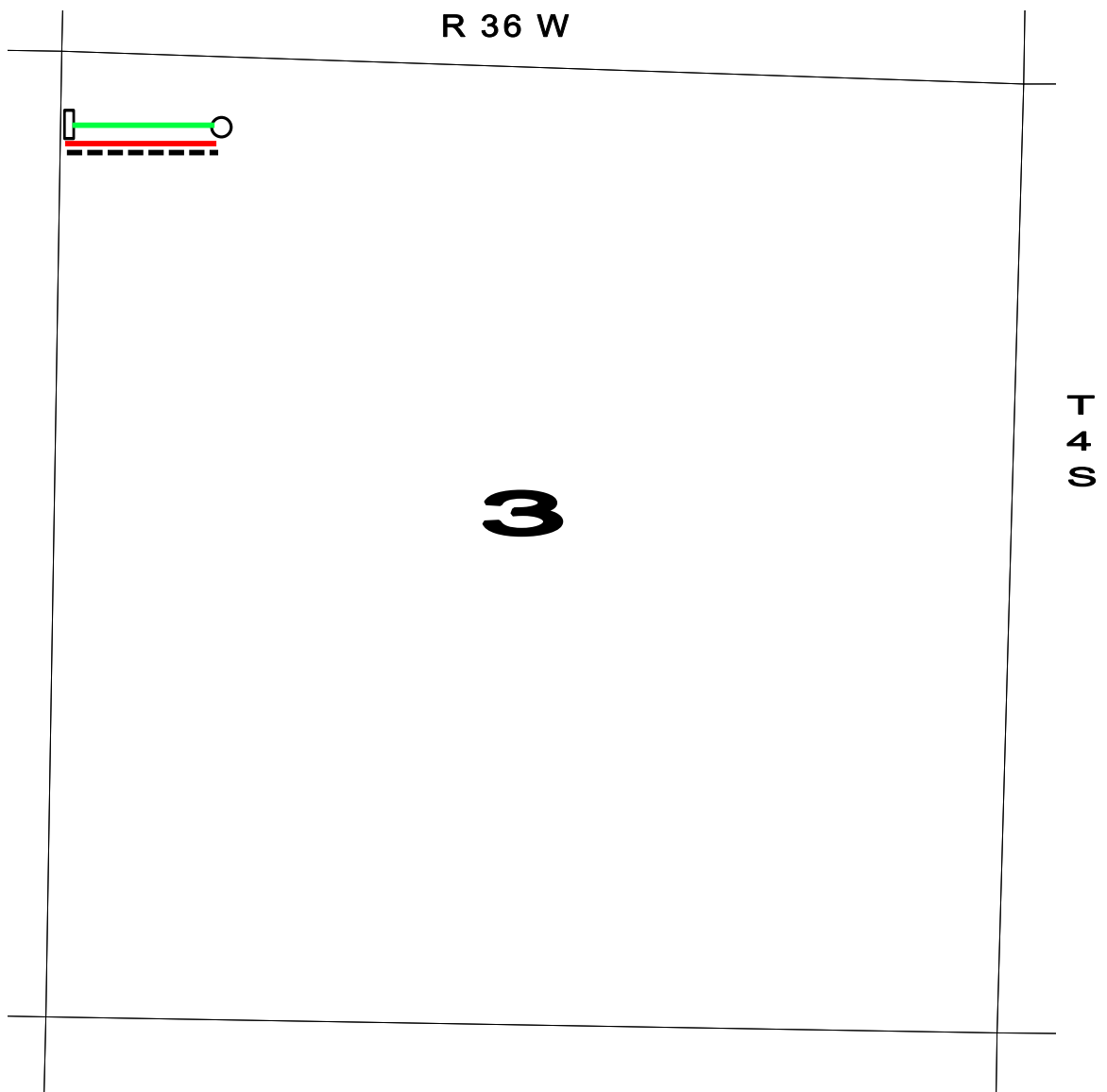


**OPERATOR:** Samuel Gary Jr. & Associates, Inc. 1515 Wynkoop Street, Suite 700  
Denver, Colorado 80202 office: 303-831-4673 ; fax: 303-863-7285

**WELL NAME:** FISHER CATTLE CO 1-3

**LOCATION:** 485 FNL / 900 FWL Sec. 3-4S-36W RAWLINS COUNTY

**SURFACE OWNERS:** A.B. Fisher, President  
Fisher Cattle Company  
15360 Road 3  
McDonald, KS 67745



- PROPOSED WELL LOCATION
- ESTIMATED LOCATION OF TANK BATTERY

- ESTIMATED LEASE ROAD
- ESTIMATED LOCATION OF FLOWLINES
- ESTIMATED LOCATION OF ELECTRICAL LINES