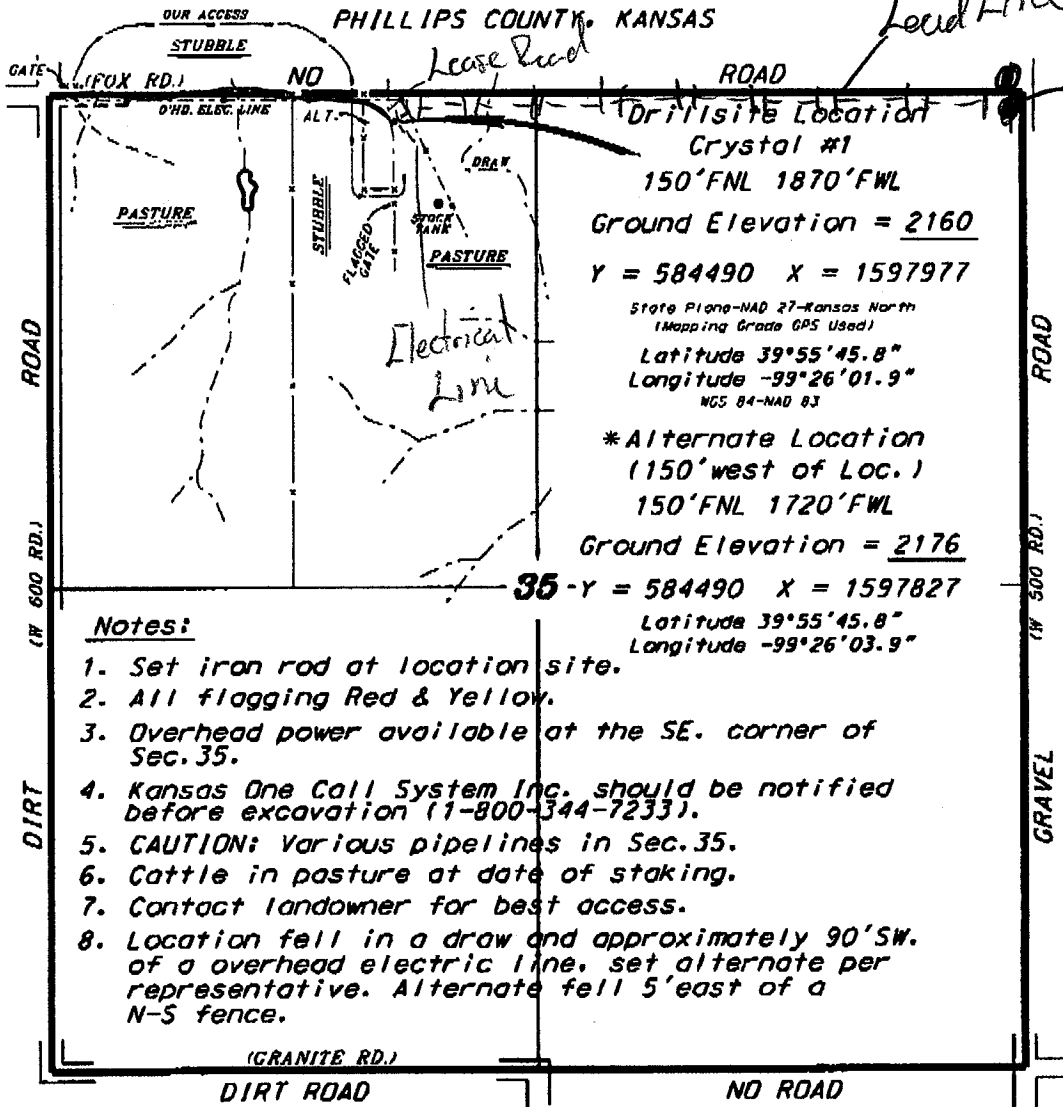


BACH OIL PRODUCTION, INC.

CRYSTAL LEASE

NW 1/4, SECTION 35, T15, R19W

PHILLIPS COUNTY, KANSAS



Drill Site Location
 Crystal #1
 150'FNL 1870'FWL
 Ground Elevation = 2160
 Y = 584490 X = 1597977

State Plane-NAD 27-Kansas North
 (Mapping Grade GPS Used)
 Latitude 39°55'45.8"
 Longitude -99°26'01.9"
 NGS 84-NAD 83

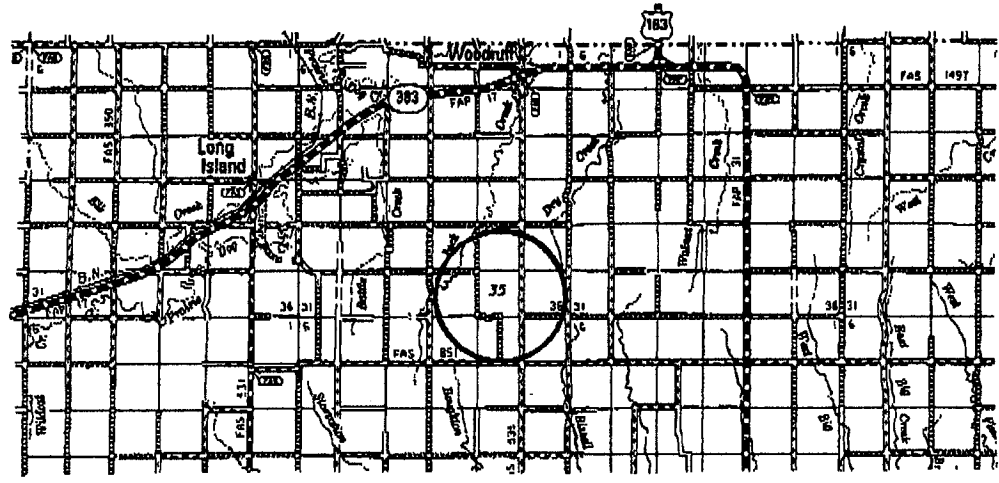
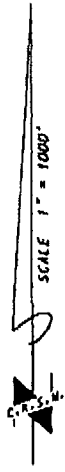
*Alternate Location
 (150' west of Loc.)
 150'FNL 1720'FWL
 Ground Elevation = 2176

35 - Y = 584490 X = 1597827
 Latitude 39°55'45.8"
 Longitude -99°26'03.9"

Notes:

1. Set iron rod at location site.
2. All flagging Red & Yellow.
3. Overhead power available at the SE. corner of Sec. 35.
4. Kansas One Call System Inc. should be notified before excavation (1-800-344-7233).
5. CAUTION: Various pipelines in Sec. 35.
6. Cattle in pasture at date of staking.
7. Contact landowner for best access.
8. Location fell in a draw and approximately 90' SW of a overhead electric line, set alternate per representative. Alternate fell 5' east of a N-S fence.

*Ingress and egress to location as shown on this plat is per usage only and may not be legally opened for public use. Contact landowner, tenant and county road department for access.



• Controlling data is based upon the best maps and photographs available to us and upon a regular section of land containing 360 acres.
 • Approximate section lines were determined using the normal standard of care of oilfield surveyors practicing in the state of Kansas. The section corners, which establish the precise section lines, were not necessarily located, and the exact location of the well site location in the section is not guaranteed. Therefore, the operator securing this article and updating this plat and all other parties relying thereon agree to hold Central Kansas Oilfield Services, Inc., its officers and employees harmless from all damages, costs and expenses and hold entities released from any liability from incidental or consequential damages.
 • Elevations derived from National Geodetic Vertical Datum.

Date AUGUST 21, 2014