



TRILOBITE TESTING, INC.

DRILL STEM TEST REPORT

Berexco LLC
 2020 N. Bramblewood
 Wichita KS 67206
 ATTN: Pete Vollmer

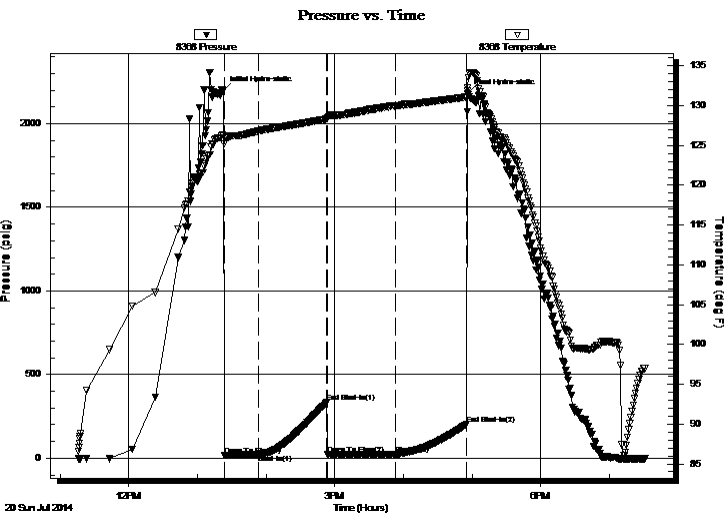
19-1S-37W
Daniel #1-19
 Job Ticket: 58458 **DST#: 2**
 Test Start: 2014.07.20 @ 11:16:00

GENERAL INFORMATION:

Formation: **KCL "C-E"**
 Deviated: No Whipstock: ft (KB)
 Time Tool Opened: 13:23:15
 Time Test Ended: 19:31:30
 Interval: **4302.00 ft (KB) To 4440.00 ft (KB) (TVD)**
 Total Depth: 4440.00 ft (KB) (TVD)
 Hole Diameter: 7.88 inches Hole Condition: Good
 Test Type: Conventional Bottom Hole (Initial)
 Tester: Royal Fisher
 Unit No: 54
 Reference Elevations: 3241.00 ft (KB)
 3228.00 ft (CF)
 KB to GR/CF: 13.00 ft

Serial #: 8368 **Inside**
 Press @ Run Depth: 25.24 psig @ 4303.00 ft (KB) Capacity: 8000.00 psig
 Start Date: 2014.07.20 End Date: 2014.07.20 Last Calib.: 2014.07.20
 Start Time: 11:16:05 End Time: 19:31:29 Time On Btm: 2014.07.20 @ 13:23:00
 Time Off Btm: 2014.07.20 @ 16:56:00

TEST COMMENT: 30 - IF - Surface blow built to 1/4' then died off in 12 min.
 60 - ISI - No return
 60 - FF - No surface blow
 60 - FSI - No return



PRESSURE SUMMARY

Time (Min.)	Pressure (psig)	Temp (deg F)	Annotation
0	2198.11	126.25	Initial Hydro-static
1	18.03	125.21	Open To Flow (1)
31	20.64	126.82	Shut-In(1)
90	333.91	128.33	End Shut-In(1)
91	22.04	128.33	Open To Flow (2)
150	25.24	129.95	Shut-In(2)
213	203.75	131.09	End Shut-In(2)
213	2179.31	132.22	Final Hydro-static

Recovery

Length (ft)	Description	Volume (bbl)
5.00	Mud - 100M	0.02

Gas Rates

Choke (inches)	Pressure (psig)	Gas Rate (Mcf/d)



**TRILOBITE
TESTING, INC.**

DRILL STEM TEST REPORT

FLUID SUMMARY

Berexco LLC
2020 N. Bramblewood
Wichita KS 67206
ATTN: Pete Vollmer

19-1S-37W
Daniel #1-19
Job Ticket: 58458 **DST#: 2**
Test Start: 2014.07.20 @ 11:16:00

Mud and Cushion Information

Mud Type: Gel Chem	Cushion Type:	Oil API:	deg API
Mud Weight: 10.00 lb/gal	Cushion Length: ft	Water Salinity:	ppm
Viscosity: 70.00 sec/qt	Cushion Volume: bbl		
Water Loss: 7.20 in ³	Gas Cushion Type:		
Resistivity: 0.00 ohm.m	Gas Cushion Pressure: psig		
Salinity: 1200.00 ppm			
Filter Cake: 2.00 inches			

Recovery Information

Recovery Table

Length ft	Description	Volume bbl
5.00	Mud - 100M	0.025

Total Length: 5.00 ft Total Volume: 0.025 bbl
 Num Fluid Samples: 0 Num Gas Bombs: 0 Serial #:
 Laboratory Name: Laboratory Location:
 Recovery Comments:

