



TRILOBITE TESTING, INC.

DRILL STEM TEST REPORT

Berexco LLC
 2020 N. Bramblewood
 Wichita KS 67206
 ATTN: Pete Vollmer

19-1S-37W
Daniel #1-19
 Job Ticket: 58459 **DST#: 3**
 Test Start: 2014.07.21 @ 17:59:00

GENERAL INFORMATION:

Formation: **Pawnee & Ft Scott**
 Deviated: No Whipstock: ft (KB)
 Time Tool Opened: 20:45:00
 Time Test Ended: 04:07:45
 Interval: **4566.00 ft (KB) To 4656.00 ft (KB) (TVD)**
 Total Depth: 4656.00 ft (KB) (TVD)
 Hole Diameter: 7.88 inches Hole Condition: Good
 Test Type: Conventional Bottom Hole (Initial)
 Tester: Royal Fisher
 Unit No: 54
 Reference Elevations: 3241.00 ft (KB)
 3228.00 ft (CF)
 KB to GR/CF: 13.00 ft

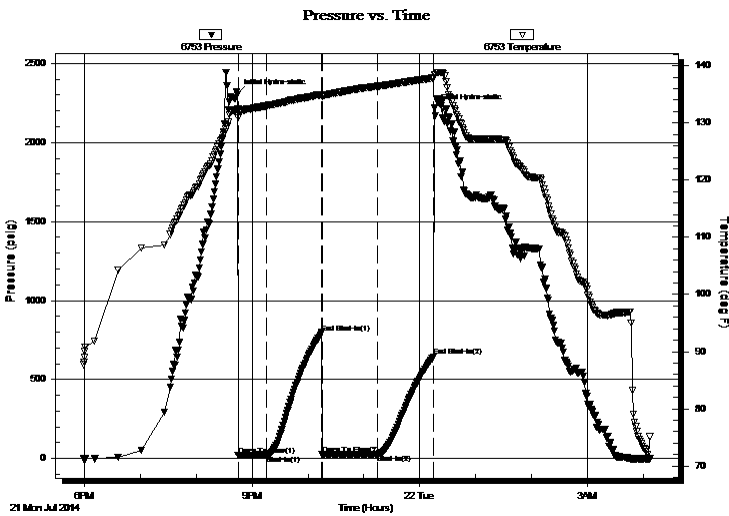
Serial #: 6753

Outside

Press @ Run Depth: 28.80 psig @ 4567.00 ft (KB) Capacity: 8000.00 psig
 Start Date: 2014.07.21 End Date: 2014.07.22 Last Calib.: 2014.07.22
 Start Time: 17:59:05 End Time: 04:07:45 Time On Btm: 2014.07.21 @ 20:44:45
 Time Off Btm: 2014.07.22 @ 00:15:45

TEST COMMENT: 30 - IF - Surface blow built to a 1/2' dead in 12 min.
 60 - ISI - No return
 60 - FF - No surface blow
 60 - FSI - No return

PRESSURE SUMMARY



Time (Min.)	Pressure (psig)	Temp (deg F)	Annotation
0	2306.77	132.39	Initial Hydro-static
1	20.41	130.86	Open To Flow (1)
31	23.39	132.93	Shut-In(1)
90	796.45	134.95	End Shut-In(1)
91	24.82	134.65	Open To Flow (2)
150	28.80	136.41	Shut-In(2)
210	645.99	137.85	End Shut-In(2)
211	2216.71	138.40	Final Hydro-static

Recovery

Length (ft)	Description	Volume (bbl)
20.00	Mud - 100M	0.10

Gas Rates

Choke (inches)	Pressure (psig)	Gas Rate (Mcf/d)



**TRILOBITE
TESTING, INC.**

DRILL STEM TEST REPORT

FLUID SUMMARY

Berexco LLC

19-1S-37W

2020 N. Bramblewood
Wichita KS 67206

Daniel #1-19

Job Ticket: 58459

DST#: 3

ATTN: Pete Vollmer

Test Start: 2014.07.21 @ 17:59:00

Mud and Cushion Information

Mud Type: Gel Chem

Cushion Type:

Oil API:

deg API

Mud Weight: 9.00 lb/gal

Cushion Length:

ft

Water Salinity:

ppm

Viscosity: 48.00 sec/qt

Cushion Volume:

bbbl

Water Loss: 8.39 in³

Gas Cushion Type:

Resistivity: 0.00 ohm.m

Gas Cushion Pressure:

psig

Salinity: 700.00 ppm

Filter Cake: 2.00 inches

Recovery Information

Recovery Table

Length ft	Description	Volume bbl
20.00	Mud - 100M	0.098

Total Length: 20.00 ft Total Volume: 0.098 bbl

Num Fluid Samples: 0

Num Gas Bombs: 0

Serial #:

Laboratory Name:

Laboratory Location:

Recovery Comments:

