



Mudgrove

Geologist's Report

Company: American Warrior, Inc.

Lease: Hoffmaster #3-23

Field: Hoffmaster

Surface Location: NW-SW-NE-SW (1949' FSL & 1392' FWL)

Sec: 23 Twp: 22S Rge: 14W

County: Stafford State: Kansas

GL: 1930' KB: 1938'

Contractor: Duke Drilling Co. Rig #8

Spud: 6/6/14 Comp: 6/14/14

RTD: 3965' LTD: 3966'

Mud Up: +/- 3100' Mud Type: Chemical Displaced

Drilling Time Kept From: 3200' to RTD

Samples Saved From: 3200' to RTD

Samples Examined: 3200' to RTD

Geological Supervision: 3450' to RTD

Geologist on Well: Kurt Talbott

Surface Casing: 8 5/8"@ 225'

Production Casing: 5 1/2" @

Wireline Logs: By Pioneer: CNL/CDL, DIL, MEL, SONIC

Well Comparison

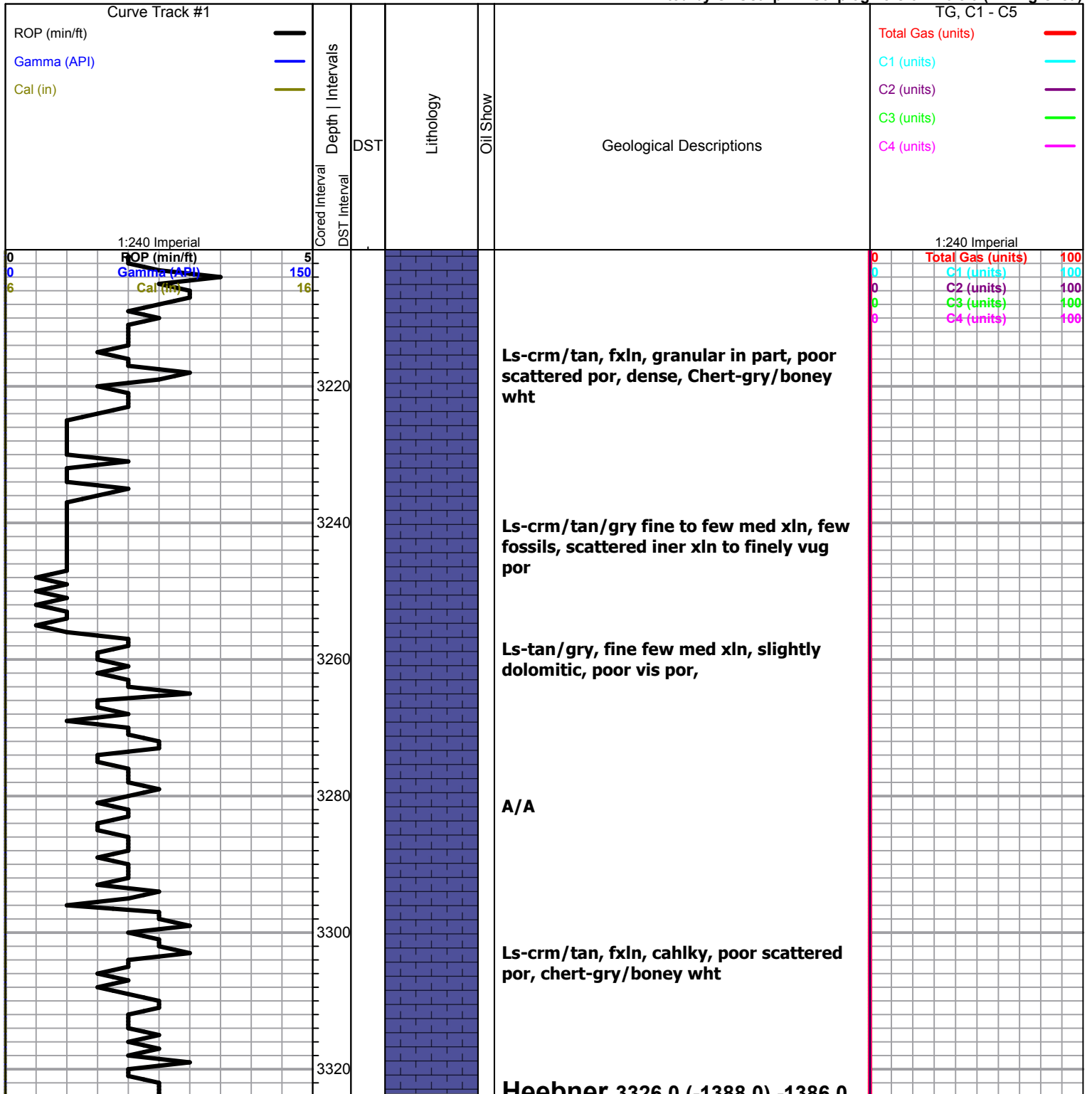
	AMERICAN WARRIOR, INC				HOFFMASTER #3	
	HOFFMASTER #3-23		HOFFMASTER #1		HOFFMASTER #3	
	1938 KB		1935 KB		1936 KB	
FORMATION	Log	Log SS	Log	SS	MD	SS
ANHYDRITE	835	1103	820	1115	833	1103
BASE ANHY	858	1080			863	1073
TOPEKA						
HEEBNER	3324	-1386	3322	-1387	3326	-1390
TORONTO	3345	-1407				
BROWN LIME	3453	-1515	3450	-1515	3452	-1516
LANSING	3466	-1528	3463	-1528	3464	-1528
BASE KC	3688	-1750	3696	-1761		
VIOLA	3746	-1808	3760	-1825	3764	-1828
SIMPSON SHALE	3795	-1857	3796	-1861		

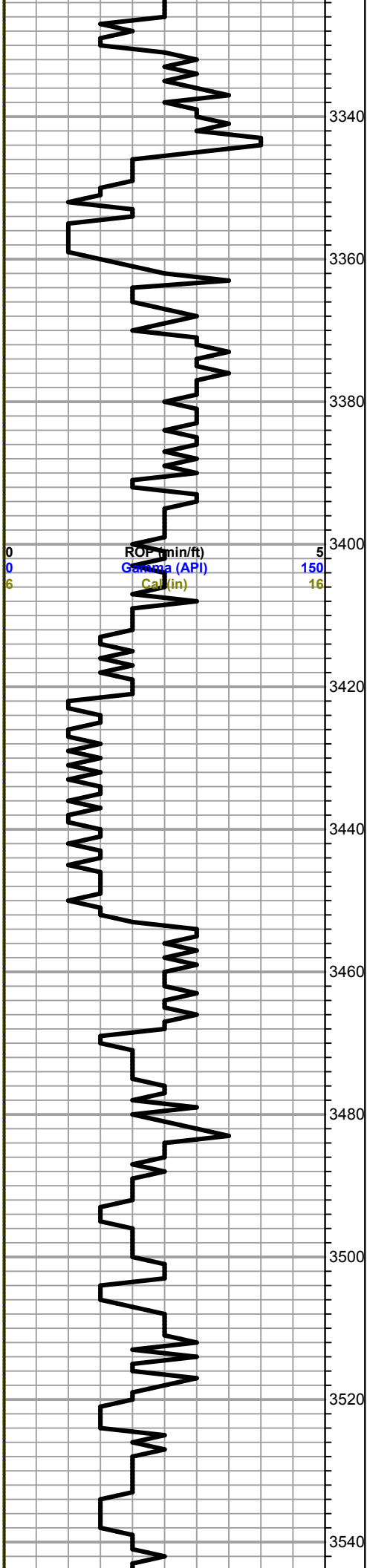
SAND			3800	-1865		
ARBUCKLE	3849	-1911	3848	-1913	3846	-1910
TOTAL DEPTH	3966	-2028	3870	-1935	3862	-1926

ROCK TYPES							
	Cht		Lmst fw<7		shale, gry		shale, red
	Dolprim		shale, grn		Carbon Sh		

OTHER SYMBOLS		
EVENTS	INTERVALS	DST
<ul style="list-style-type: none"> ⌋ Casing Shoe ▽ RTF ▶ Sidewall ▲ Left Casing Shoe ▼ Right Casing Shoe 	<ul style="list-style-type: none"> ■ Core • DST 	<ul style="list-style-type: none"> ■ DST Int ■ DST alt

Printed by GEOstrip VC Striplog version 4.0.8.9 (www.grsi.ca)





Freebner 3520.0 (-1588.0) -1588.0
 Black carbon shale

Shale-gry/grn, soft

Toronto 3346.0 (-1408.0) -1407.0
 Ls-crm/wht, fxln, slightly dolomitic, poor vis por, chalky

Douglas 3358.0 (-1420.0) -1424.0

Shale-gry/grn, soft, slightly silty in part, few mica

A/A

Shale-gry/dark gry, soft, silty,

A/A Few mica

Brown Lime 3452.0 (-1514.0) -1515.0
 Ls-tan/buff, fxln, dense, poor vis por, cherty in part

Lansing 3468.0 (-1530.0) -1528.0
 Ls-crm/wht, fxln, few fossils/ool, poor scattered ppt to iner ool por, chalky, no vis shows

Ls-wht/lt gry, fxln, ool, poor vis por, chalky, chert-gry/wht

Ls-wht/crm, fxln, few fossils, scattered por, cherty in part, slightly chalky, trace stains, NSFO, no odor

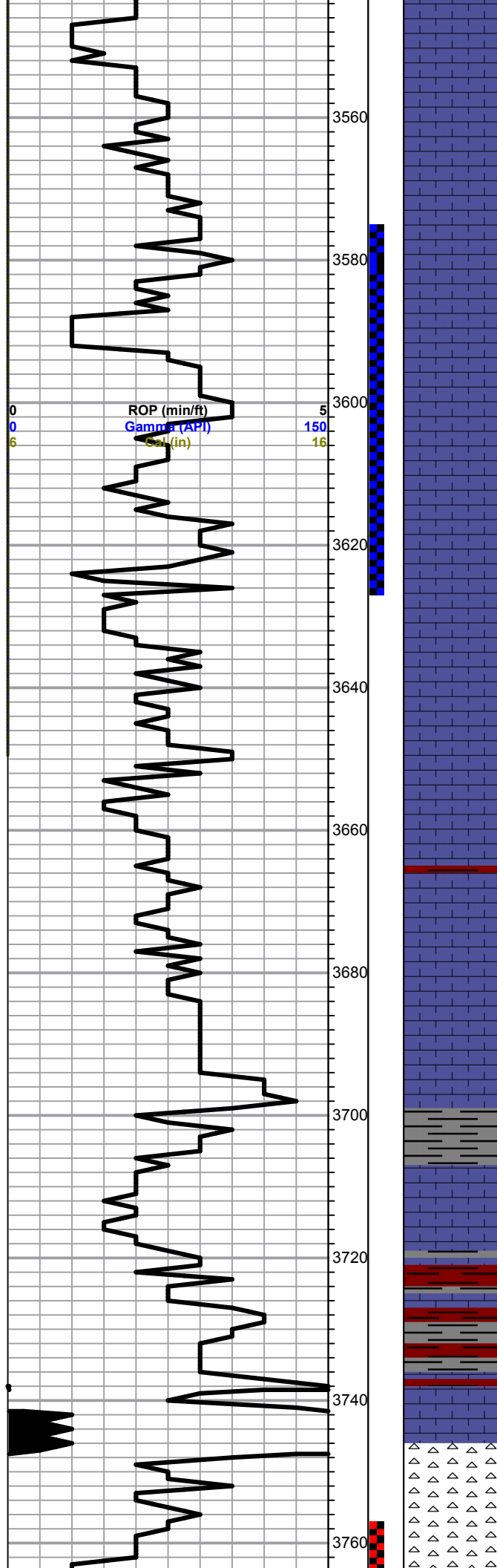
Ls-wht/lt gry, fxln, ool, poor scattered iner xln to finely vuf por,

0	Total Gas (units)	100
0	C1 (units)	100
0	C2 (units)	100
0	C3 (units)	100
0	C4 (units)	100

DST #1 3576-3625
 30-45-45-60
 IF: BOB 2 1/2 min
 ISI: Built to 2 1/4"

Recovery:

1049' Gas In Pipe
 124' OCMW (2o 3m 95w)
 124' OCMW (5o 5m 90w)
 62' GOCMW (2g 3m 20o 75w)
 124' GMCOW (10m 15o 35w 40g)



Ls-wht/crm, fxln, slightly granular, ool, scattered oom por, chalky, no vis shows

124' GOWCM (12m 14w 31o 43 g)
 5' GOWCM (10w 20g 20o 50m)

Pressures:

ISIP 499 psi
 FSIP 497 psi
 IFP 91-164 psi
 FFP 164-274 psi
 HSH 1776-1741 psi

Ls-crm/tan, fxln, ool, scattered sub oom to oom por, dense, no vis shows, slightly chalky

Ls-crm/tan, fxln, ool, fair to good oom por, light to golden brown stains, TrSFO, good odor

Ls-lt gry/wht, fxln, ool, dense, poor to fair iner ool to oom por, golden to dark brown stns, SFO, faint odor

Ls-crm/tan, fxln, dense, ool, poor vis por,

Ls-crm/wht/tan, fxln, ool, scattered fair oom por, dark brown stains, NSFO, faint odor, slightly chalky

Ls-crm/tan, fxln, ool, poor scattered iner xln por, slightly chalky, trace spotty stains, NSFO, faint odor

Ls-crm/wht/lt gry, fxln, ool/fossils, poor vis por, chalky, chert- gry/tan

Ls- A/A poor vis por, denses

Base KC 3688.0 (-1750.0) -1750.0

shale-firm/gry/grn

Ls-wht/lt gry, flxn, few fossils, poor scattered por, no vis shows, slightly chalky

A/A
 Shale-gry/green/maroon

Ls-wht/crm, fxln, dense, poor vis por, chert in part

Viola 3748.0 (-1810.0) -1808.0

Chert-crm/tan, semi tripolitic, golden to dark brown stains, SFO, fair gassy odor, few pieces Dol.tan/buff. flxn. poor iner

0	Total Gas (units)	100
0	C1 (units)	100
0	C2 (units)	100
0	C3 (units)	100
0	C4 (units)	100

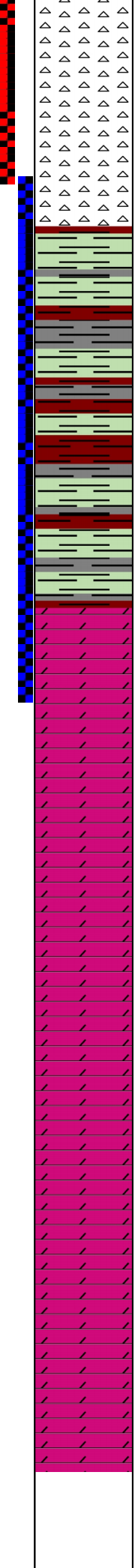
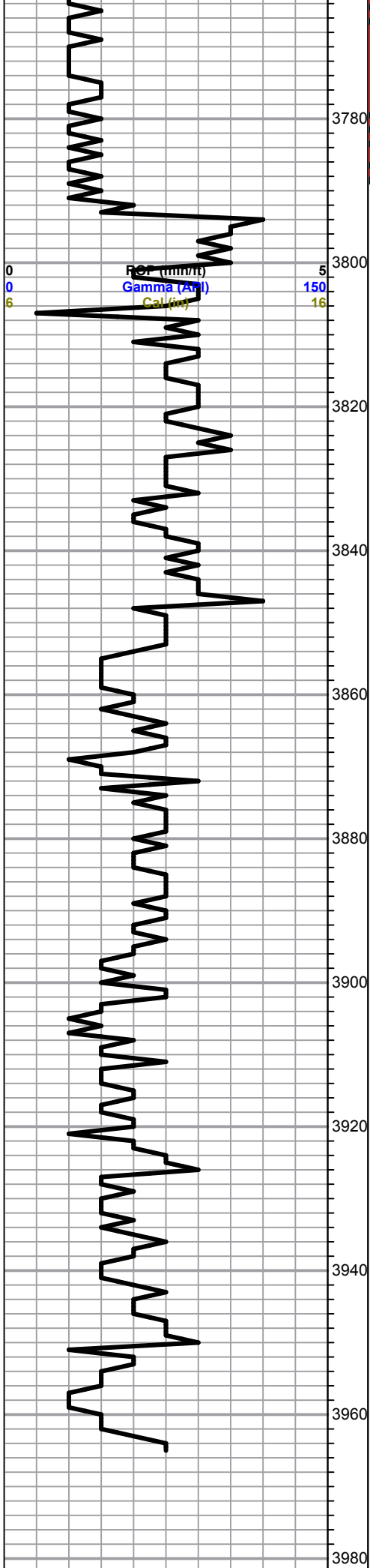
DST # 2 3757-3785
 30-30-30-45

IF: Built to 1/4"
 ISI: No blow

Recovery:
 5' Drilling Mud

Pressures:

ISIP 718 psi
 FSIP 142 psi
 IFP 18-345 psi
 FFP 35-66 psi
 HSH 1904-1885 psi



Few pieces Dol-tan/bull, xln, poor iner xln por, stains, SFO,

Chert-wht/crm, semi trip, few fresh boney wht, dark brown to black staining, Trace to fair SFO, gassy odor

Simpson 3792.0 (-1854.0) -1857.0

Shale-gry/grn/maroon, soft

Shale-varying color

Trace sand- wht/greenish, fine grained, mostly friable, trace spotty stains, no show free oil

Arbuckle 3853.0 (-1915.0) -1911.0

Dol-tan/crm, fine to few med xln, fair oom por, dark brown to black stains, SFO, good odor, chert-cmr/boney wht

Dol-crm/tan, fine to med xln, dense, fair iner xln to oom por, dark brown to black stains, NSFO, cherty

Dol-crm/tan, fine to med xln, few rhomb xln, dense, trace stains, NSFO, faint odor, cherty, slightly chalky

A/A Losing stains/odor

Dol-wht/crm, f-med few rhomb xln, dense, cherty-boney wht, trace stains, NSFO

A/A

Dol-crm/tan, med rhomb xln, fair iner xln por, no odor, no stains, cherty-boney wht/crm

Total Depth 3965.0 (-2027.0) - 2028.0

0	Total Gas (units)	100
0	C1 (units)	100
0	C2 (units)	100
0	C3 (units)	100
0	C4 (units)	100

DST #3 3788-3859
30-45-45-60

IF: Built to 6"
ISI: No blow

Recovery:
62' GOWCM
30' GOWCM
402' Gas In Pipe

Pressures:

ISIP	1224 psi
FSIP	1208 psi
IFP	57-64 psi
FFP	64-72 psi
HSH	1890-1815 psi

