

Geologic Report  
**Aaron L. Young**

Drilling Time and Sample Log

Scale 1:240 (5"=100') Imperial  
 Measured Depth Log

Well Name: Driscoll #2  
 Well Id:  
 Location: Section 8 - T15S - R14W  
 License Number: API: 15-167-23968  
 Spud Date: 6 / 21 / 2014  
 Surface Coordinates: 1000' FNL and 1420' FEL  
 Approx. SE - SE - NW - NE  
 Region: Russell Co., KS  
 Drilling Completed: 6 / 27 / 2014  
 Bottom Hole Coordinates:  
 Ground Elevation (ft): 1828' K.B. Elevation (ft): 1833'  
 Logged Interval (ft): 2100' To: 3320' Total Depth (ft): 3320'  
 Formation: Arbuckle  
 Type of Drilling Fluid: Chemical - Mud-Co  
 Printed by WellSight Log Viewer from WellSight Systems 1-800-447-1534 www.WellSight.com

**OPERATOR**

Company: TREK AEC, LLC  
 Address: 155 N Market, Suite 710  
 Wichita, KS 67202

**GEOLOGIST**

Name: Aaron L. Young  
 Company:  
 Address: 155 N. Market, Suite 710  
 Wichita, Kansas 67202

**General Info**

CONTRACTOR: WW Drilling, Rig #6

**BIT RECORD:**

No.	Size	Make	Jets	Out	Feet	Hours
1	12-1/4	Smith	14-14-15	471	466	5.5
2	7-7/8	Smith	14-14-15	3320	2894	66.5

SURVEYS: 471'-1/2, 3042'-3/4, 3320'-1.

GENERAL DRILLING AND PUMP INFORMATION:  
 Drilling with 30,000 lbs. on bit and approx 85 RPM.  
 Running 8 stands of collars; 422.79'  
 Pumping approx 800 psi at standpipe.

**Daily Status**

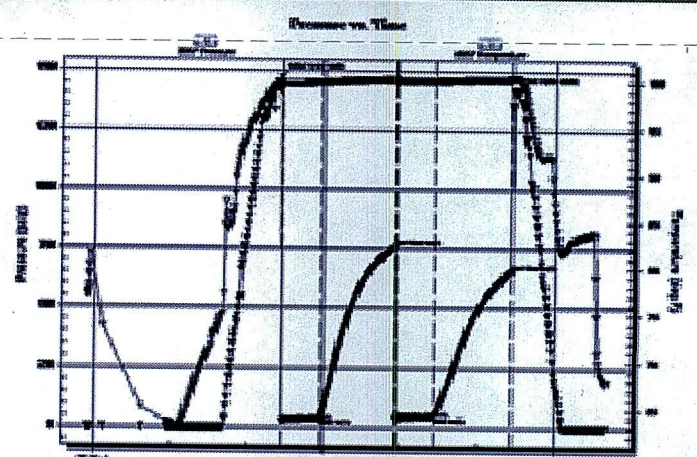
- 6/21/14 - Spud @ 2:45pm
- 6/22/14 - WOC
- 6/23/14 - Drilling, @ 2000'
- 6/24/14 - Drilling, @ 2763'
- 6/25/14 - @ 3042', DST #1
- 6/26/14 - @ 3137', DST #2, DST #3
- 6/27/14 - @ 3271', DST #4, TD @ 3320'

DST #1: 2,902' - 3,042' Topeka, Toronto, Lansing 'A'  
 30"-60"-30"-60"

IF: 1 1/2" blow  
 ISI: No return  
 FF: No blow  
 FSI: No return

Rec': 55' OS M

SIP: 758-653; FP: 25-38, 39-47 HP: 1474-1420



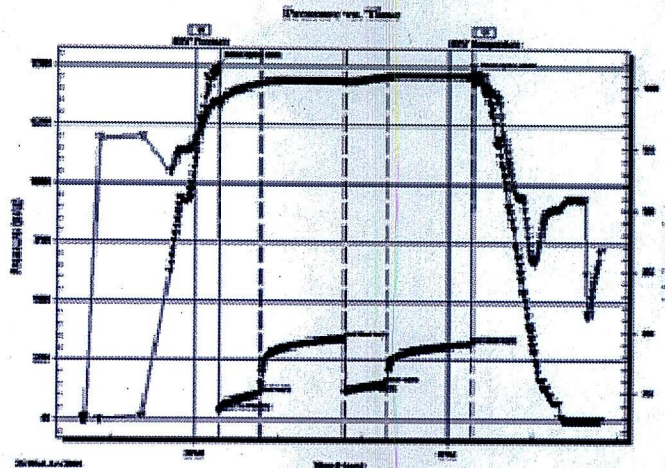


DST #2 3,028' - 3,081' Lansing 'B', 'C', & 'D'  
30"-60"-30"-60"

IF: BOB in 7 1/2 min  
ISI: Very weak surface blow in 20 min  
FF: BOB in 22 min  
FSI: No return

Rec': 40' WCM (40% W, 60% M), 245' W

SIP: 1098-1094; FP: 19-38, 43-65 HP: 2059-2029

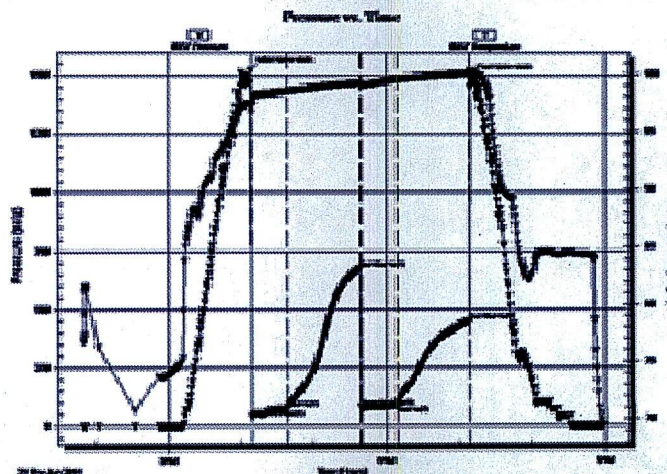


DST #3 3,078'-3,137' Lansing 'E', 'F', & 'G'  
30"-60"-30"-60"

IF: BOB in 2 1/2 min  
ISI: No return  
FF: BOB in 4 min  
FSI: No return

Rec': 125' GVSWCO (20% G, 70% O, 10% W), 80'  
GOCM (25% G, 20% O, 55% M)

SIP: 679-451; FP: 38-74, 78-87; HP: 1524-1491

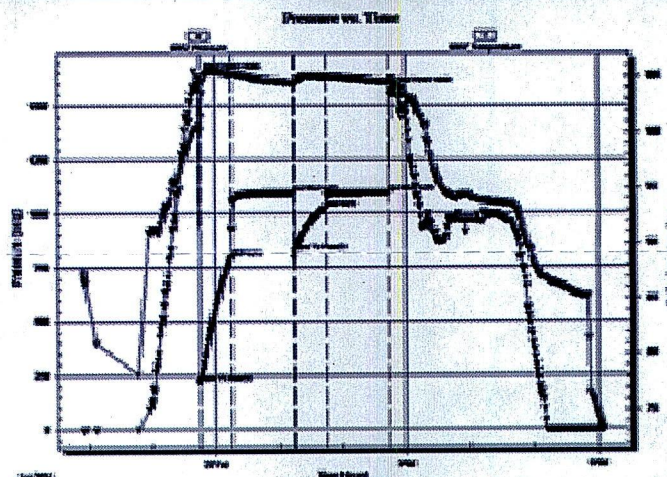


DST #4 3,217'-3,271' Arbuckle  
30"-60"-30"-60"

IF: BOB in 1 min  
ISI: No return  
FF: BOB in 1 1/2 min  
FSI: No return

Rec': 2270' MW w/ H2S Gas (dropped bar)

SIP: 1098-1099; FP: 216-797, 822-1026; HP: 1633-1569



ROCK TYPES

- Anhy
- Bent
- Brec
- Cht
- Clyst
- Coal
- Congl
- Dol

- Gyp
- Igne
- Lmst
- Meta
- Mrlst
- Salt
- Shale
- Shcol

- Shgy
- Sltst
- Ss
- Till
- Carb sh
- Dol
- Dtd
- Gry sh

- Sandylms
- Shale
- Sltstn
- Shlyslts
- Sltyslts
- Lms



**ACCESSORIES**

**MINERAL**

- Anhy
- Arggrn
- Arg
- Bent
- Bit
- Breclrag
- Calc
- Carb
- Chtdk
- Chttt
- Dol
- Feldspar
- Ferrpel
- Ferr
- Glau
- Gyp
- Hvymin
- Kaol
- Marl
- Minxl
- Nodule
- Phos
- Pyr

- Salt
- Sandy
- Silt
- Sil
- Sulphur
- Tuff
- Chlorite
- Dol
- Sand
- Sity

**FOSSIL**

- Algae
- Amph
- Belm
- Bioclst
- Brach
- Bryozoa
- Cephal
- Coral
- Crin
- Echin
- Fish
- Foram

- Fossil
- Gastro
- Oolite
- Ostra
- Pelec
- Pellet
- Pisolite
- Plant
- Strom
- Fuss
- Oomold

**STRINGER**

- Anhy
- Arg
- Bent
- Coal
- Dol
- Gyp
- Ls
- Mrst
- Sltstrg
- Ssstrg
- Carbsh

- Clystn
- Dol
- Grysh
- Gryslt
- Lms
- Sandylms
- Sh
- Sltstn

**TEXTURE**

- Boundst
- Chalky
- Cryxln
- Earthy
- Finexln
- Grainst
- Lithogr
- Microxln
- Mudst
- Packst
- Wackest

**OTHER SYMBOLS**

**POROSITY TYPE**

- Earthy
- Fenest
- Fracture
- Inter
- Moldic
- Organic
- Pinpoint
- Vuggy

**SORTING**

- Well
- Moderate
- Poor

**ROUNDING**

- Rounded
- Subrnd
- Subang
- Angular

**OIL SHOWS**

- Even
- Spotted
- Ques
- Dead
- Gas show

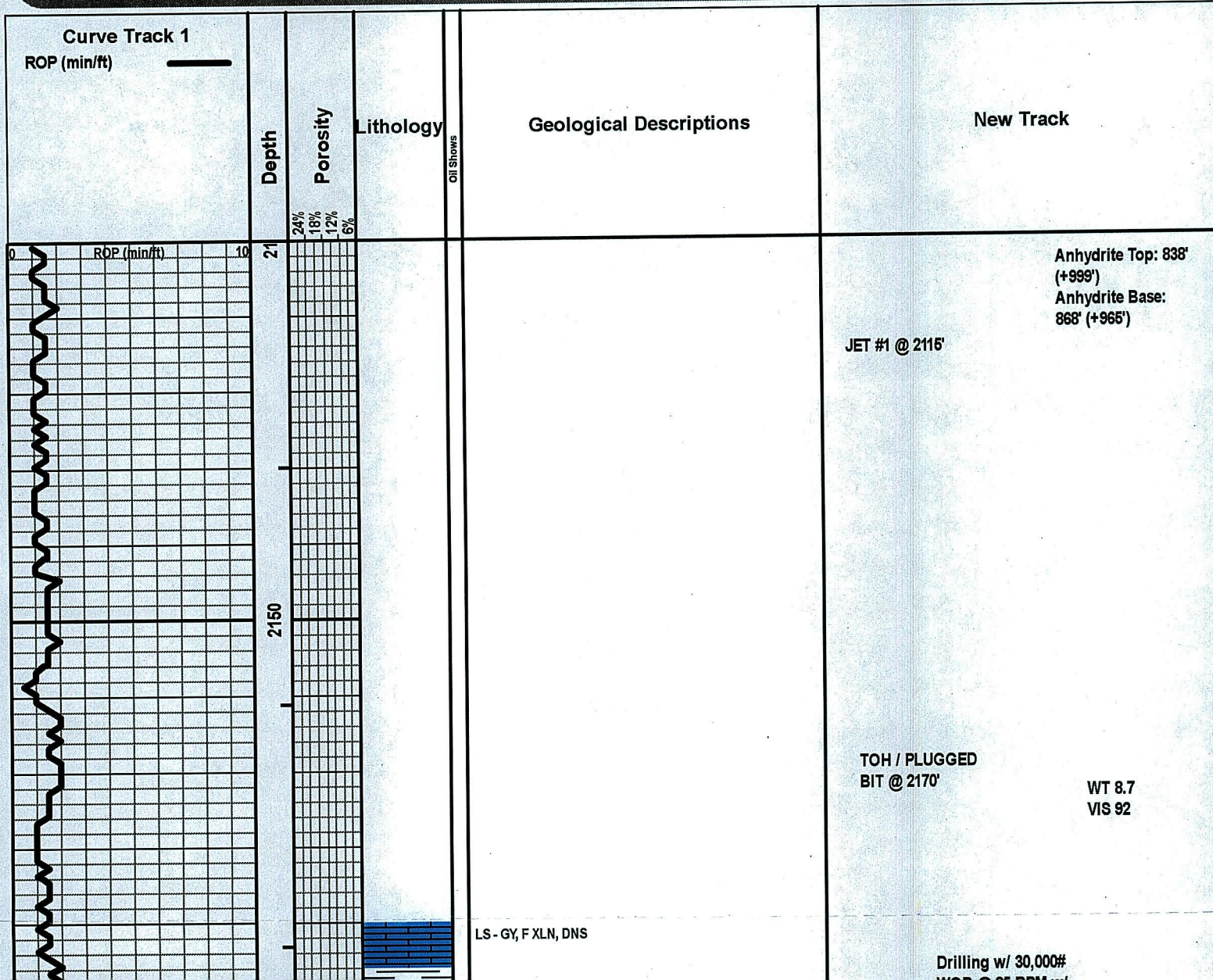
**INTERVALS**

- Core
- Dst

- Dst

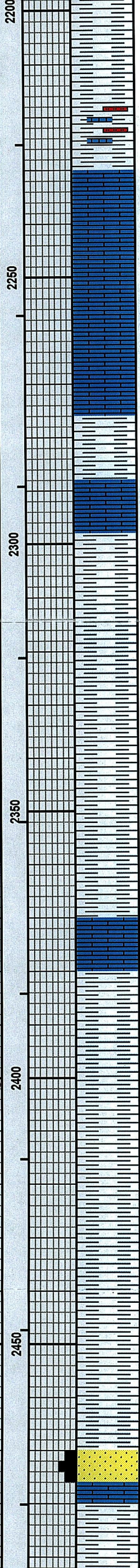
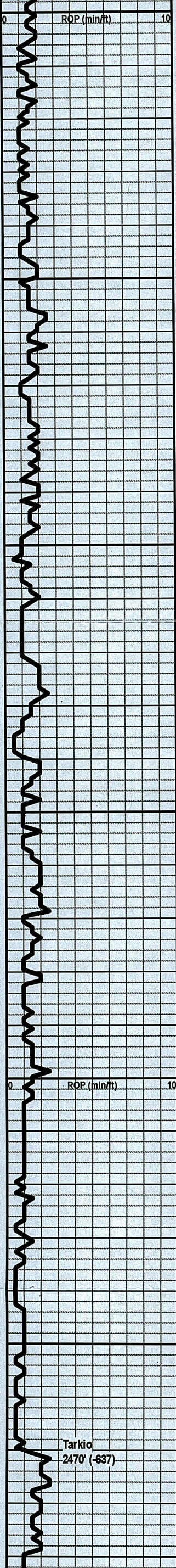
**EVENTS**

- Rft
- Sidewall
- Conn



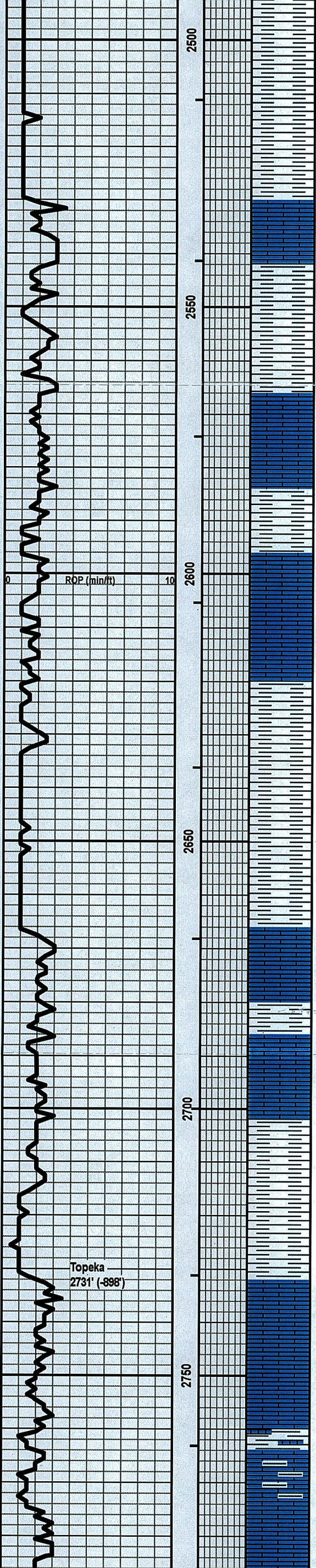


WOB @ 65 RPM w/  
7 stands of collars  
and 800 PSI at the  
stand pipe



SH - RD / GY / GRN  
SH - GY, SLTY IN PT, LMY IN PT  
LS - TAN / GY, F XLN, DNS  
LS - GY / WHT, VF XLN, CHKY  
LS - GY, VF / F XLN, DNS  
LS - CRM / TAN, VF / F XLN, DNS, FOSS  
SH - GY  
LS - TAN, F XLN, DNS, FOSS  
SH - GY, FOSS IN PT  
SH - GY  
SH - GY  
LS - CRM, F XLN, DNS, ABUND FOSS  
SH - GY  
SH - RD / GRN / YEL IN PT  
SH - GY  
SH - RD / GRN / YEL  
SS - CLR, FN GR, WSRTD, GLAUC  
LS - TAN - GY, F XLN, DNS, FOSS IN PT  
SH - GY





SH - GY

LS - TAN, F XLN, DNS, FOSS

SH - GRN / GY

LS - TAN / LT BRN, VF / F XLN, DNS, ABUND FOSS

LS - GY, VF / F, SUBCHKY / DNS, FOSS

SH - GRN

LS - CRM / TAN, F XLN, DNS, FOSS

LS - WHT / CRM, VF XLN, CHKY

SH - GY

SH - GY

LS - TAN / LT BRN, F XLN, V DNS, FOSS

SH - GY

LS - TAN, F XLN, DNS, ABUND FOSS

LS - BRN, F XLN, DNS

SH - GY

SH - GY

LS - CRM / TAN, VF / F XLN, PRED DNS, SUBCHKY IN PT

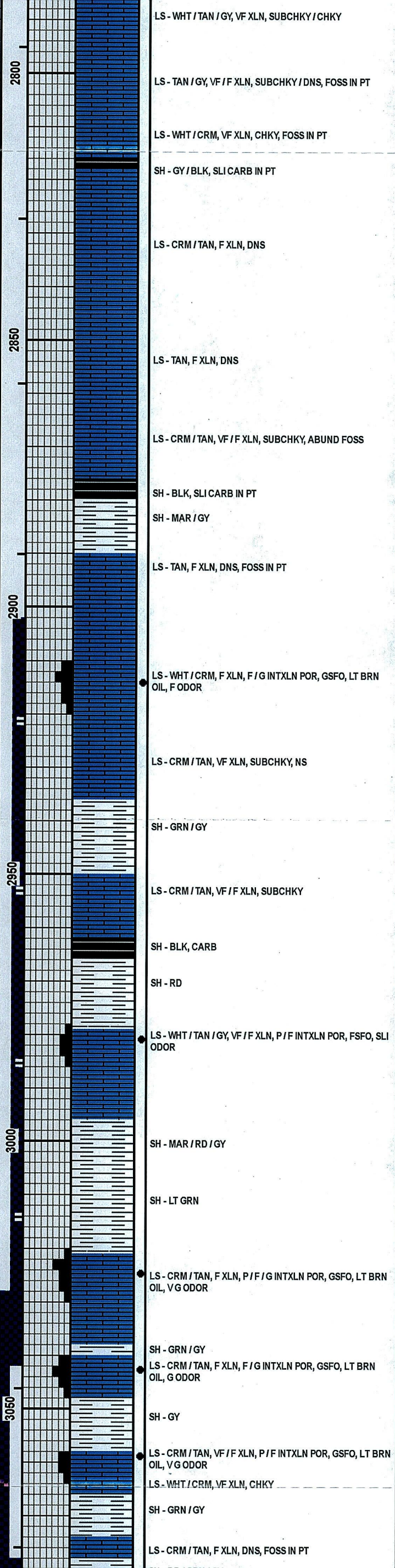
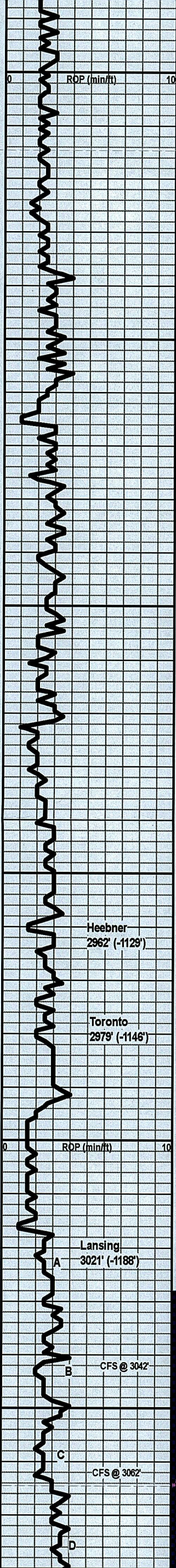
LS - TAN, F XLN, DNS

LS - CRM / TAN, VF XLN, SUBCHKY

SH - GY, LMY

LS - GY, F XLN, DNS, FOSS, SHLY IN PT





Drilling w/ 30,000#  
WOB @ 85 RPM w/  
7 stands of collars  
and 800 PSI at the  
stand pipe

WT 9.2  
VIS 64

DST #1  
Topeka, Toronto, & Lansing 'A'  
2902'-3042'  
30"-60"-30"-60"

IF: 1 1/2" blow  
ISI: No return  
FF: No blow  
FSI: No return

Rec: 55' OS M

IH: 1474#  
IF: 25#-38#  
ISI: 758#  
FF: 39#-47#  
FSI: 653#  
FH: 1420#

WT 9.2  
VIS 57

DST #2  
Lansing B, C, D  
3028'-3081'  
30"-60"-30"-60"

IF: BOB in 7 1/2 min  
ISI: Very weak Surface blow in 20 min  
FF: BOB in 22 min  
FSI: No return

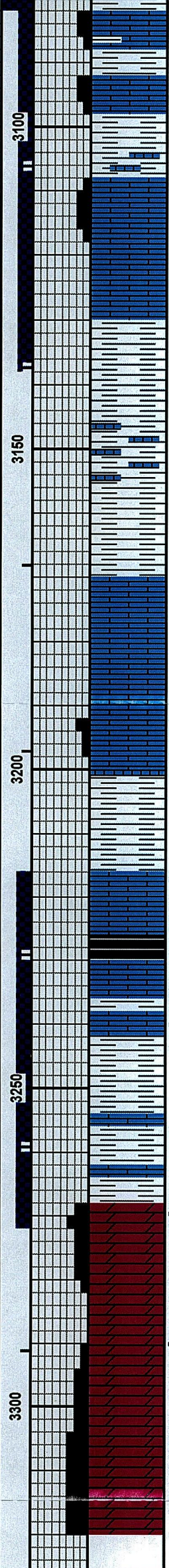
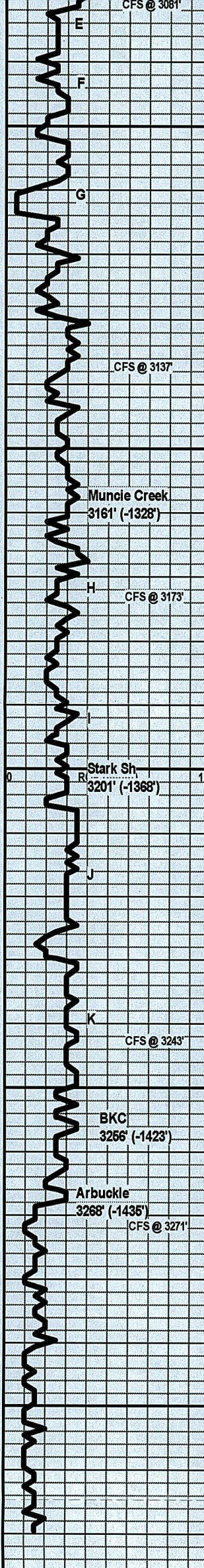
Rec: 40' WCM (40% W, 60% M), 245' W

IH: 1499#  
IF: 35#-109#  
ISI: 342#  
FF: 113#-154#  
FSI: 321#  
FH: 1461#

WT 9.2  
VIS 55

WT 9.2  
VIS 69





SH - RD / GRN / GY  
 LS - CRM / TAN, VF / F XLN, P / F INTXLN POR, FSFO, LT BRN OIL, SLI ODOR, SLI FLUOR  
 LS - BRN, VF / F XLN, P / F INTXLN POR, FSFO, DK BRN OIL, VG ODOR, NO FLUOR  
 LS - CRM / TAN, P / F INTXLN POR, FSFO, LT BRN OIL, ABUND FOSS, OOL IN PT, NO FLUOR  
 LS - CRM, VF XLN, SUBCHKY / DNS, NS  
 SH - GY  
 SH - RD / GRN / GY  
 SH - GY, LMY IN PT  
 SH - GY / GRN  
 LS - CRM / TAN, PRED SUBCHKY, DNS IN PT, SLI OIL STN, NSFO, NO ODOR, NO FLUOR  
 LS - WHT / CRM, VF / F XLN, SUBCHKY / DNS, P INTXLN POR IN PT, SSFO, NO ODOR, SLI FLUOR  
 SH - GY  
 SH - RD / GRN / GY  
 LS - TAN, F XLN, DNS  
 SH - BLK, CARB  
 LS - CRM / TAN, F XLN, DNS, SLI OIL STN, NSFO, NO ODOR, YEL-GRN FLUOR  
 SH - RD / GRN / GY  
 SH - RD / GRN / GY  
 SH - GRN / MAR / RD  
 DOLO - WHT, F XLN, RHOMBIC, F / G INTXLN POR, FSFO, SLI ODOR, YEL FLUOR, SOME POR APPEAR BARREN  
 DOLO - WHT, F XLN, DNS, NS  
 DOLO - WHT, F XLN, RHOMBIC, P INTXLN POR, SSFO, SLI ODOR, SLI LT GRN FLUOR  
 DOLO - WHT, F XLN, SLI RHOMBIC, F / G INTXLN POR, NS

WT 9.2  
 VIS 53

DST #3  
 Lansing E, F, & G  
 3078'-3137'  
 30"-60"-30"-60"

IF: BOB in 2 1/2 min  
 ISI: No return  
 FF: BOB in 4 min  
 FSI: No return

Rec: 125' GVSOWCO (20% G, 70% O, 10% W), 80' GOCM (25% G, 20% O, 55% M)

IH: 1524#  
 IF: 38#-74#  
 ISI: 679#  
 FF: 78#-87#  
 FSI: 451#  
 FH: 1491#

WT 9.1  
 VIS 51

DST #4  
 Arbuckle  
 3217'-3271'  
 30"-60"-30"-60"

IF: BOB in 1 min  
 ISI: No return  
 FF: BOB in 1 1/2 min  
 FSI: No return

Rec: 2270' MW w/ H2S Gas (dropped bar)

IH: 1633#  
 IF: 216#-797#  
 ISI: 1098#  
 FF: 822#-1026#  
 FSI: 1099#  
 FH: 1669#

WT 9.2  
 VIS 50

WT 9.2  
 VIS 49

WT 9.3  
 VIS 55  
 WT 9.2  
 VIS 55  
 WT 9.2  
 VIS 60+

WT 9.2  
 VIS 55

RTD 3320'