



Mudgroe

**PETROLEUM
CORPORATION**
Claflin, Kansas

NOTES

Company: American Warrior, Inc.

Lease: Handy #10

Field: Blue Bell

Location: NW-SW-SE-SW

Sec: 29 Twsp: 34S Rge: 31W

County: Seward State: Kansas

KB: 2744' GL: 2731'

API #: 15-175-22221-00-00

Contractor: Duke Drilling Inc. (Rig #9)

Spud: 07/23/2014 Comp: 08/03/2014

RTD: 6500' LTD: 6504'

Mud Up: 4300' Type Mud: Chemical

Samples Saved From: 4350' to RTD

Drilling Time Kept From: 4350' to RTD

Samples Examined From: 4350' to RTD

Geological Supervision from: 4350' to RTD

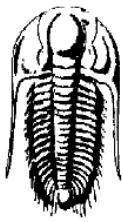
Geologist on Well: Wyatt Urban

Surface Casing: 8 5/8@ 1705'

Electronic Surveys: Logged by Pioneer Energy Services: DIL/MEL/ DUCP

American Warrior Well Comparison Sheet

DRILLING WELL					COMPARISON WELL				COMPARISON WELL			
American Warrior-Handy 10 NW-SW-SE-SW 29-34S-31W					American Warrior- Handy 9-29 NE-SW-SW-SW 29-34S-31W				American Warrior-Handy 7-29 SE-NW-NW-SW 29-34S-31W			
2744 KB					2733 KB				2730 KB			
					Structural Relationship				Structural Relationship			
Formation	Sample	Sub-Sea	Log	Sub-Sea	Log	Sub-Sea	Sample	Log	Log	Sub-Sea	Sample	Log
Heebner	4416	-1672	4411	-1667	4416	-1683	11	16	4391	-1661	-11	-6
Toronto	4427	-1683	4439	-1695	4444	-1711	28	16	4419	-1689	6	-6
Jansing	4560	-1816	4560	-1816	4569	-1836	20	20	4566	-1836	20	20
Marmaton	5262	-2518	5255	-2511	5258	-2525	7	14	5244	-2514	-4	3
Morrow	5806	-3062	5794	-3050	5797	-3064	2	14	5789	-3059	-3	9
Morrow Sd.	5845	-3101	5849	-3105	5852	-3119	18	14	5826	-3096	-5	-9
Chester	5950	-3206	5952	-3208	5955	-3222	16	14	5924	-3194	-12	-14
St. Gen	6256	-3512	6256	-3512	6264	-3531	19	19	6229	-3499	-13	-13
St. Louis	6351	-3607	6351	-3607	6380	-3647	40	40	6325	-3595	-12	-12
RTD	6500	-3756	6500	-3756	6500	-3767	11	11	6500	-3770	14	14
LTD	6500	-3756	6500	-3756	6502	-3769	13	13	6500	-3770	14	14



**TRILOBITE
TESTING, INC**

DRILL STEM TEST REPORT

American Warrior
3118 Cumming Rd
P.O. Box 399
Garden City, Ks 67846
ATTN: Wyatt Urban

29-34s-31w
Handy 10-29
Job Ticket: 56666 **DST#: 1**
Test Start: 2014.07.27 @ 15:05:00

GENERAL INFORMATION:

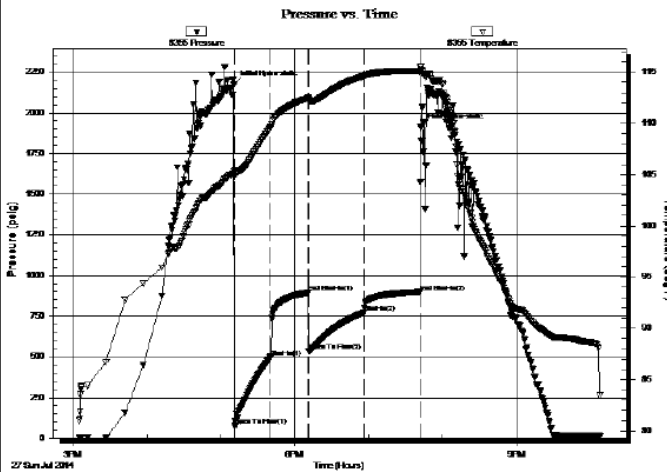
Formation: **Toronto**
Deviated: No Whipstock: 0.00 ft (KB)
Time Tool Opened: 17:11:15
Time Test Ended: 22:08:15
Test Type: Conventional Bottom Hole (Initial)
Tester: Justin Harris
Unit No: 71
Interval: **4394.00 ft (KB) To 4467.00 ft (KB) (TVD)**
Reference Elevations: 2744.00 ft (KB)
Total Depth: 4467.00 ft (KB) (TVD) 2731.00 ft (CF)
Hole Diameter: 7.88 inches-Hole Condition: Poor KB to GR/CF: 13.00 ft

Serial #: 8355

Outside

Press@RunDepth: 771.36 psig @ 4395.00 ft (KB) Capacity: 8000.00 psig
Start Date: 2014.07.27 End Date: 2014.07.27 Last Calib.: 2014.07.27
Start Time: 15:05:05 End Time: 22:08:14 Time On Btm: 2014.07.27 @ 17:11:00
Time Off Btm: 2014.07.27 @ 19:42:30

TEST COMMENT: 30: B.O.B in 4 mins.
30: Weak Surface Blow Died in 5 min.
45: B.O.B in 4 mins.
45: No Return.



PRESSURE SUMMARY

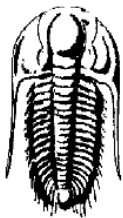
Time (Min.)	Pressure (psig)	Temp (deg F)	Annotation
0	2176.84	105.38	Initial Hydro-static
1	78.17	104.77	Open To Flow (1)
30	497.84	109.62	Shut-In(1)
60	894.25	112.45	End Shut-In(1)
61	535.07	112.34	Open To Flow (2)
106	771.36	114.60	Shut-In(2)
151	899.42	115.08	End Shut-In(2)
152	1911.27	115.57	Final Hydro-static

Recovery

Length (ft)	Description	Volume (bbl)
1646.00	mcw 10%m 90%w	21.49
189.00	mcw 40%m 60%w	2.65
	60' GP	

Gas Rates

Choke (inches)	Pressure (psig)	Gas Rate (Mcf/d)



**TRILOBITE
TESTING, INC**

DRILL STEM TEST REPORT

American Warrior Inc.
PO Box 399
Garden City, KS 67846
ATTN: Wyatt Urban

29-34s-31w Seward,KS
Handy #10-29
Job Ticket: 56553 **DST#: 2**
Test Start: 2014.07.30 @ 16:14:00

GENERAL INFORMATION:

Formation: **Marmaton**
Deviated: No Whipstock: ft (KB)
Test Type: Conventional Bottom Hole (Reset)

Time Tool Opened: 19:17:30
 Time Test Ended: 01:09:45

Tester: Cornelio Landa III
 Unit No: 67

Interval: 5274.00 ft (KB) To 5373.00 ft (KB) (TVD)
 Total Depth: 5373.00 ft (KB) (TVD)
 Hole Diameter: 7.88 inches-Hole Condition: Good

Reference Elevations: 2744.00 ft (KB)
 2731.00 ft (CF)
 KB to GR/CF: 13.00 ft

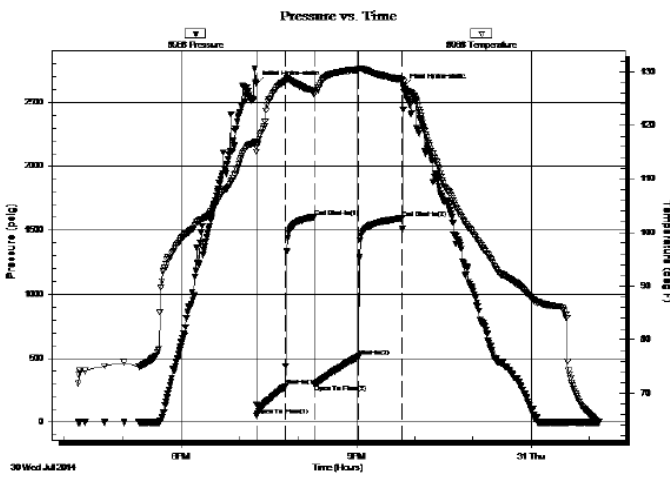
Serial #: 8968

Outside

Press@RunDepth: 513.53 psig @ 5277.00 ft (KB)
 Start Date: 2014.07.30 End Date: 2014.07.31
 Start Time: 16:14:05 End Time: 01:09:45

Capacity: 8000.00 psig
 Last Calib.: 2014.07.31
 Time On Btm: 2014.07.30 @ 19:17:00
 Time Off Btm: 2014.07.30 @ 21:48:30

TEST COMMENT: IF: B.o.b. in 8 min.
 1st Bled off in 2 min.-Surface blow back-Built to 1/8 of Blow back
 FF: 1 in. Immediately-B.o.b. in 9 min.
 FSt Bled off in 2 min.- Weak surface blow back-Died in 25 min.



PRESSURE SUMMARY

Time (Min.)	Pressure (psig)	Temp (deg F)	Annotation
0	2641.30	116.92	Initial Hydro-static
1	52.87	115.91	Open To Flow (1)
30	279.29	128.28	Shut-In(1)
60	1599.66	126.41	End Shut-In(1)
60	292.44	125.70	Open To Flow (2)
106	513.53	130.41	Shut-In(2)
150	1593.58	128.51	End Shut-In(2)
152	2621.79	127.59	Final Hydro-static

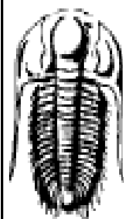
Recovery

Length (ft)	Description	Volume (bbl)
181.00	Mcw 5m 95w	0.89
567.00	Mcw 30m 70w	7.95
126.00	Gw cm 5g 5w 90m w/oil spots	1.77
0.00	RW .38 @ 64.5=18500	0.00
0.00	GP=126	0.00

* Recovery from multiple tests

Gas Rates

	Choke (inches)	Pressure (psig)	Gas Rate (Mcf/d)



TRILOBITE TESTING, INC

DRILL STEM TEST REPORT

American Warrior Inc.
 PO Box 399
 Garden City, KS 67846
 ATTN: Wyatt Urban

29-34s-31w Seward,KS

Handy #10-29

Job Ticket: 56554 **DST#: 3**

Test Start: 2014.08.01 @ 21:37:00

GENERAL INFORMATION:

Formation: **Morrow Sands**
 Deviated: No Whipstock: ft (KB)
 Time Tool Opened: 00:34:15
 Time Test Ended: 06:02:00

Test Type: Conventional Bottom Hole (Reset)
 Tester: Cornelio Landa III
 Unit No: 67

Interval: 5783.00 ft (KB) To 5875.00 ft (KB) (TVD)
 Total Depth: 5875.00 ft (KB) (TVD)
 Hole Diameter: 7.88 inches-Hole Condition: Good

Reference Elevations: 2744.00 ft (KB)
 2731.00 ft (CF)
 KB to GR/CF: 13.00 ft

Serial #: 8968

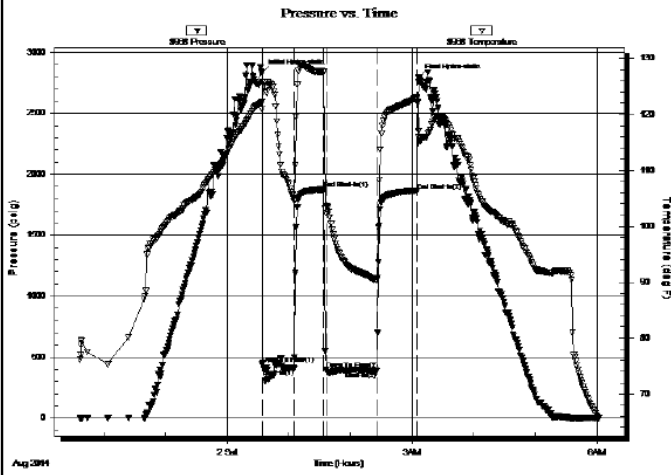
Outside

Press@RunDepth: 387.45 psig @ 5786.00 ft (KB)
 Start Date: 2014.08.01 End Date: 2014.08.02
 Start Time: 21:37:05 End Time: 06:01:59

Capacity: 8000.00 psig
 Last Calib.: 2014.08.02
 Time On Btm: 2014.08.02 @ 00:34:00
 Time Off Btm: 2014.08.02 @ 03:06:45

TEST COMMENT: IF: B.o.b. in 25 seconds-G.T.S. in 4 min.-Gauged Gas 10 min. into Open

IS: Bled off 15 min.-B.o.b. Immediately
 FF: B.o.b. Immediately-G.T.S.-Gauged Gas 5 min. into open
 FS: Bled off 15 min.- B.o.b. Immediately



PRESSURE SUMMARY

Time (Min.)	Pressure (psig)	Temp (deg F)	Annotation
0	2832.85	122.20	Initial Hydro-static
1	446.20	120.94	Open To Flow (1)
31	409.50	104.51	Shut-h(1)
61	1876.65	127.66	End Shut-h(1)
63	397.84	102.22	Open To Flow (2)
112	387.45	90.26	Shut-h(2)
151	1865.43	122.97	End Shut-h(2)
153	2794.56	115.88	Final Hydro-static

Recovery

Length (ft)	Description	Volume (bbl)
120.00	Gcm 40g 60m	0.59
94.00	Gcm 20g 80m	0.76
93.00	Gcm 15g 85m	1.30
0.00	GTS	0.00

* Recovery from multiple tests

Gas Rates

	Choke (inches)	Pressure (psig)	Gas Rate (Mcf/c)
First Gas Rate	0.75	70.00	1318.32
Last Gas Rate	1.00	55.00	1995.17
Max. Gas Rate	0.75	90.00	1630.71

ROCK TYPES

sdy lmst
 Lmst fw>7
 Lmst fw<7
 shale, gry
 Carbon Sh
 shale, red
 Ss

ACCESSORIES

FOSSIL
 ◊ Oolite

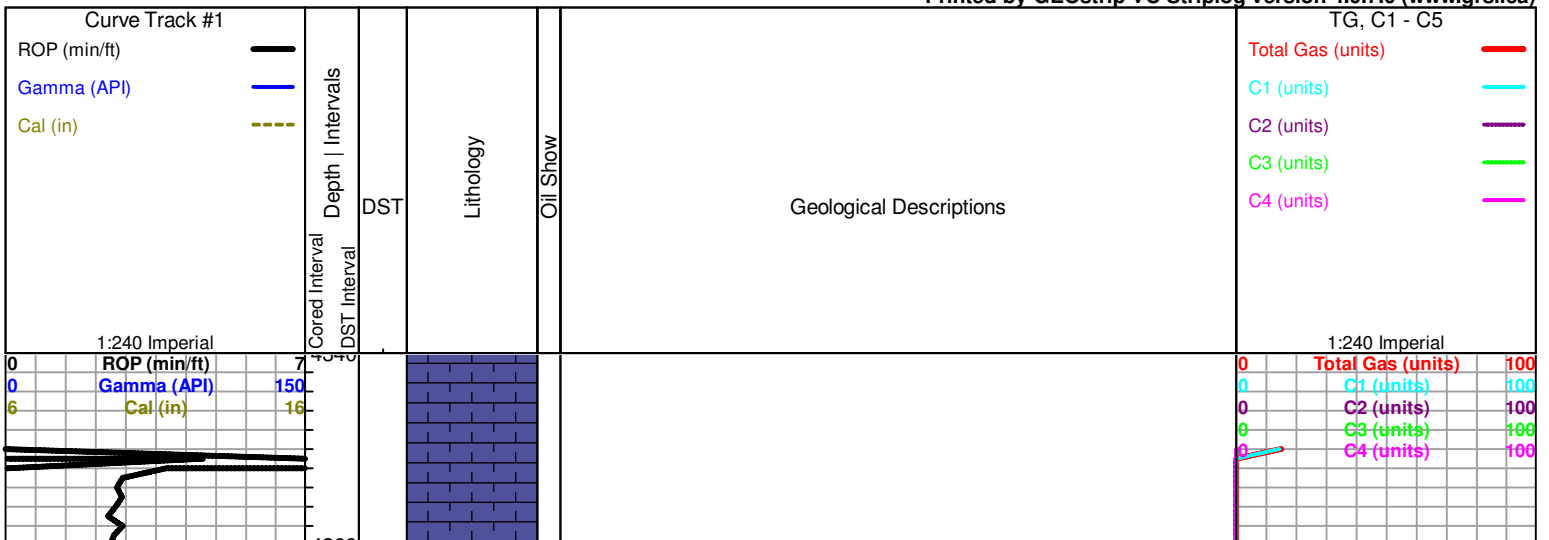
STRINGER
 ● Sandstone

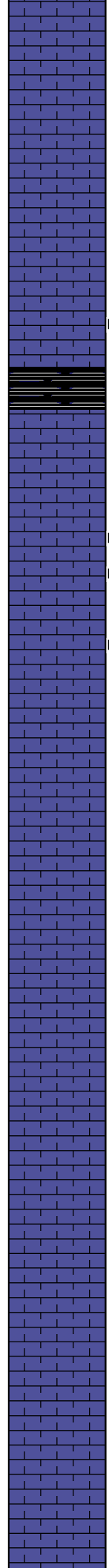
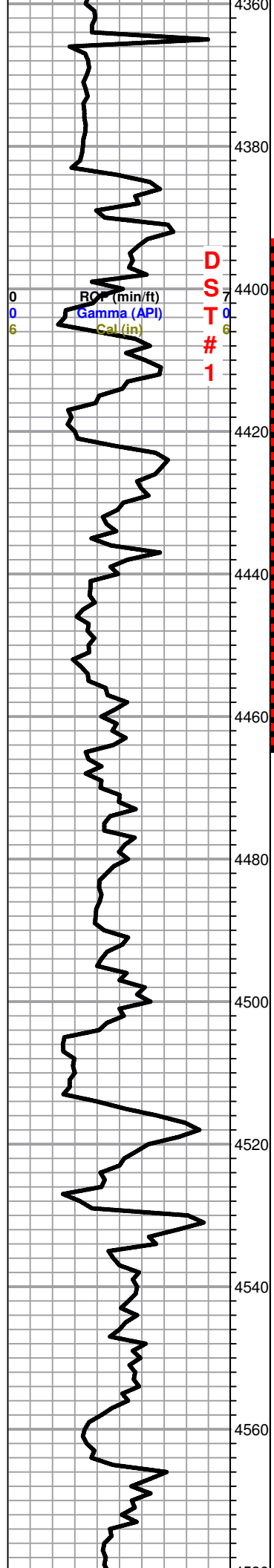
OTHER SYMBOLS

Oil Show
 ● Good Show
 ● Fair Show
 ● Poor Show
 ○ Spotted or Trace
 ○ Questionable Stn
 D Dead Oil Stn
 ■ Fluorescence
 * Gas

DST
 ■ DST Int
 ■ DST alt
 ■ Core
 || tail pipe

Printed by GEOstrip VC Striplog version 4.0.7.0 (www.grsi.ca)





Sh. black gry, silty

LS, cream to tan, F-MXL, chakly, poor scattered porosity, Lt. flor. cut, no odor, no shows free oil

Heebner 4416.0 (-1672.0)

Black carb Sh.

Toronto 4427.0 (-1683.0)

LS, tan, cream, FXL, chalky, poor to fair scattered porosity, Lt. black stain, fair flor. cut, no odor

LS, tan, brown, FXL, few foss, poor scattered porosity, Lt. flor cut, no odor

LS, cream tan, gry, FXL, cherty poor visible porosity, few foss, no shows

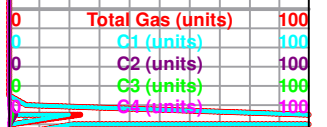
LS, cream FXL, chalky, poor visible porosity, no shows

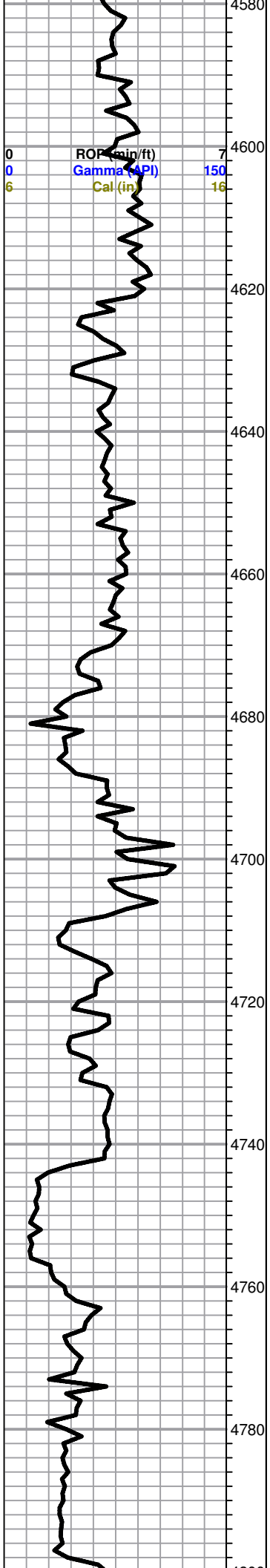
Sh. gry, silty

LS, tan, cream, FXL, dense, poor visible porosity, no shows

Lansing 4560.0 (-1816.0)

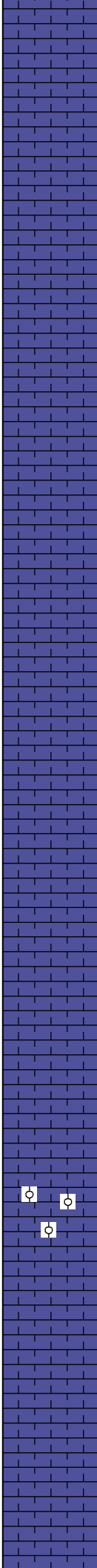
LS, cream, FXL, cherty, poor visible porosity, few foss, no shows





ROP (min/ft)
Gamma (API)
Cal (in)

7
150
16



LS, cream, FXL, ool, poor scattered porosity, no shows

LS, tan, FXL, SI. chalky, few foss, poor scattered porosity, no shows

LS, tan, gry, FXL, dense, few foss, poor visible porosity, no shows

LS, tan, FXL, foss, chalky, poor scattered porosity, no shows

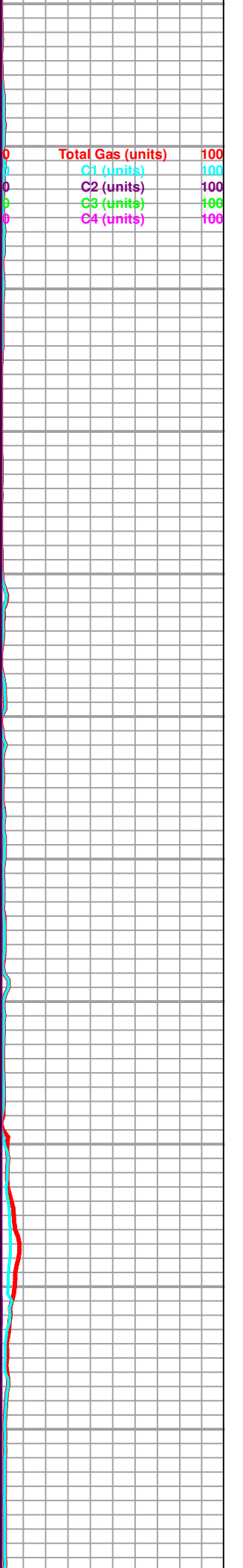
LS, A/A

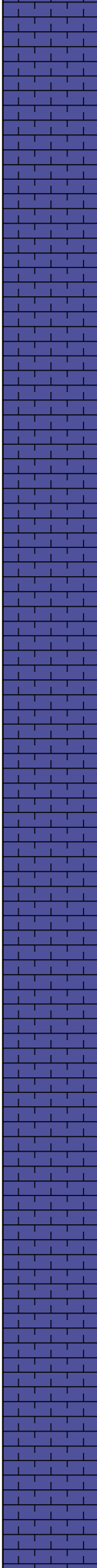
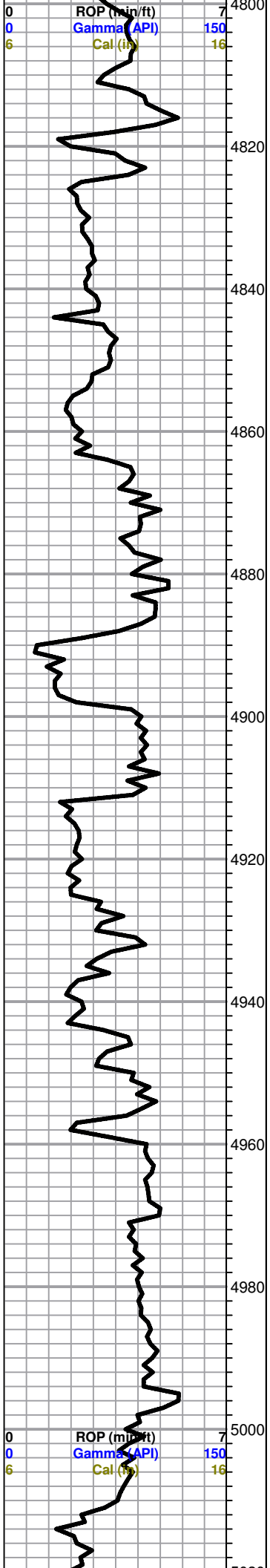
LS, tan, FXL, cherty, poor visible porosity, no shows

LS, tan, F-MXL, ool, poor to fair vuggy porosity, no shows

LS, tan, gry, FXL, few foss, chalky in parts, no shows

Total Gas (units) 100
C1 (units) 100
C2 (units) 100
C3 (units) 100
C4 (units) 100





LS, tan, A/A

LS, tan, FXL, few foss, sl. chalky in parts, no shows

LS, tan, brown, FXL, cherty, poor visible porosity, no shows

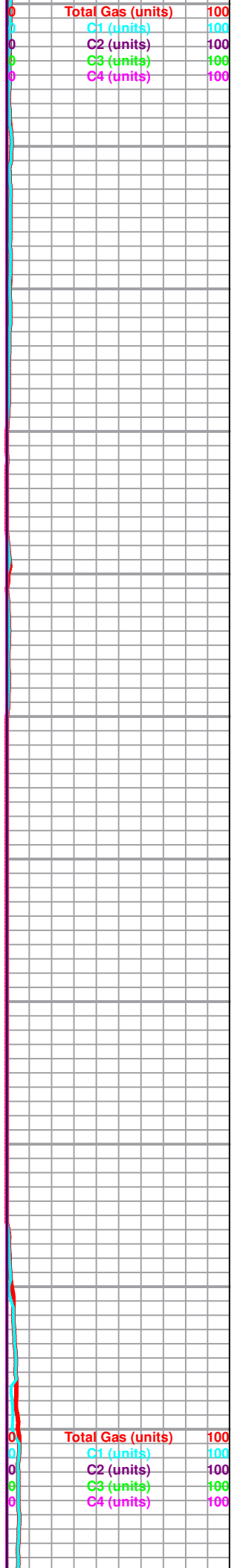
LS, tan, ool, good vuggy porosity, no shows

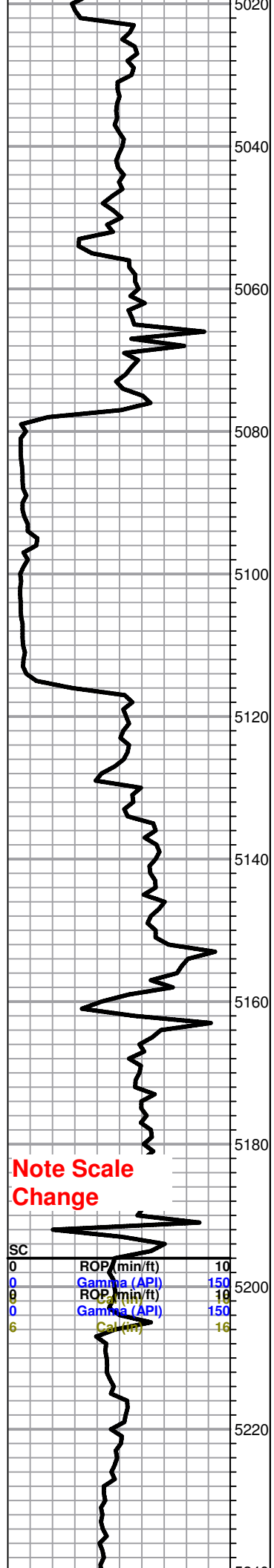
LS, tan, brown, FXL, dense, sl. chalky, few foss, poor visible porosity, no shows

LS, tan, brown, FXL, few foss, poor scattered porosity, no shows

LS, tan, gry, brown, FXL, dense, few foss, poor visible porosity, sl. chalky in parts, (slug gray silty shale?)

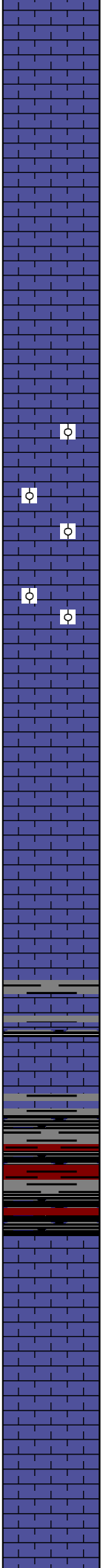
Black carb Sh.





Note Scale Change

SC	ROP (min/ft)	Gamma (API)
0	10	150
0	10	150
0	10	150
6	16	150



LS, tan, ool, poor scattered porosity, chalky in parts, no shows

LS, cream, tan, oom, good vuggy porosity, no shows

LS, tan, oom, good vuggy porosity, no shows

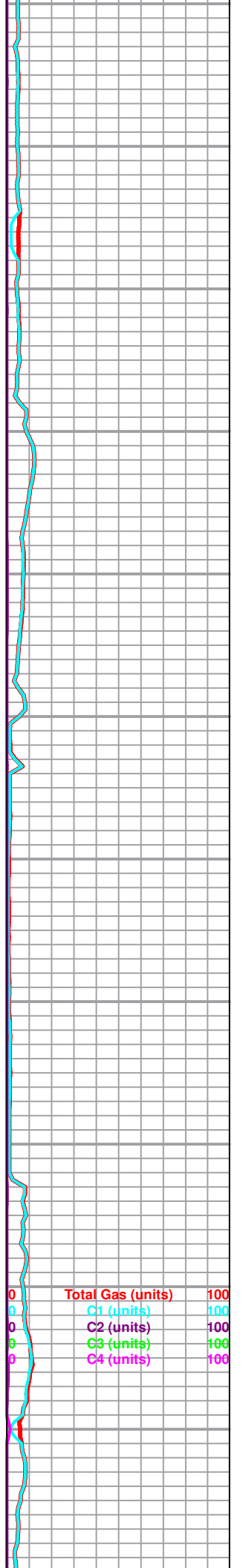
LS, tan, FXL, dense, poor visible porosity, no shows

LS, A/A, trc. gray silty sh.

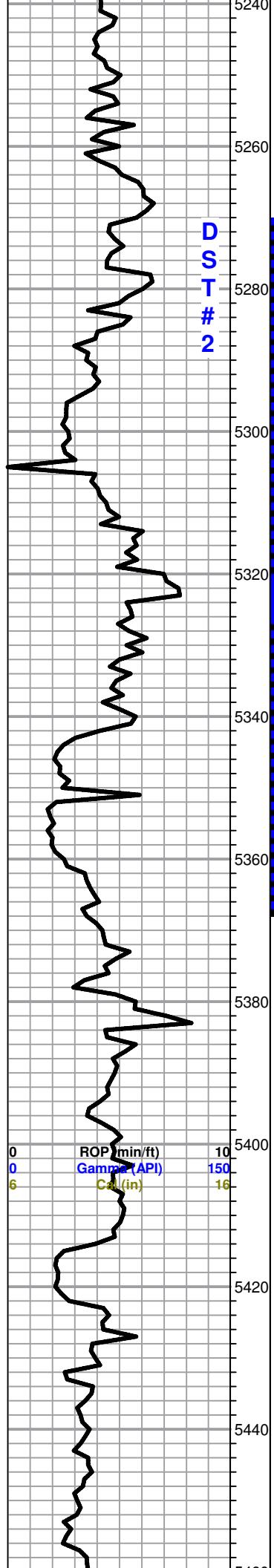
Sh. gry, maroon, silty

LS, cream tan, FXL, dense, cherty, poor visible porosity

LS, tan, brown, FXL, dense, poor scattered porosity, no shows no odor



Total Gas (units)	C1 (units)	C2 (units)	C3 (units)	C4 (units)
0	100	100	100	100
0	100	100	100	100
0	100	100	100	100
0	100	100	100	100



Marmaton 5262.0 (-2518.0)

LS, tan, brown, FXL, dense, cherty, poor visible porosity, no shows

■ LS, tan, brown, F-MXL, V. chalky, poor scattered porosity, good flor. cut, no odor,

LS, tan, brown, FXL, dense, cherty, poor visible porosity, few foss, no shows, no flor. cut

■ LS, tan, brown, FXL, chalky, Lt. spty, flor. cut, no odor

■ LS, tan, brown, FXL, few foss, poor scattered porosity, Lt. spty flor cut. no odor

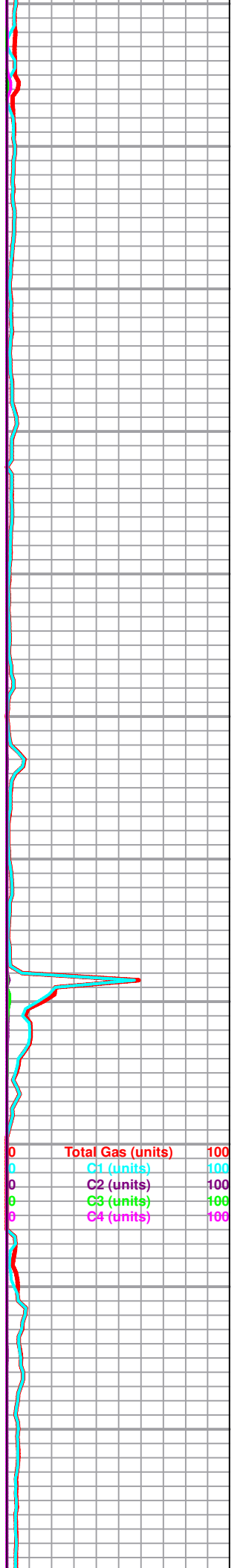
LS, cream to tan, FXL, few foss, cherty, poor visible porosity, no shows, no odor

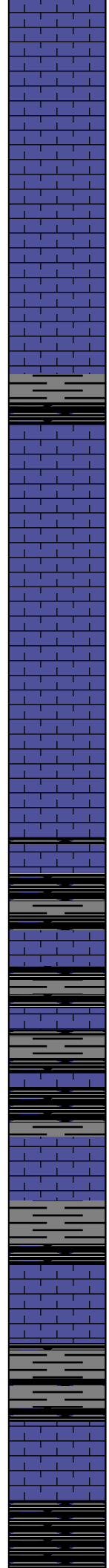
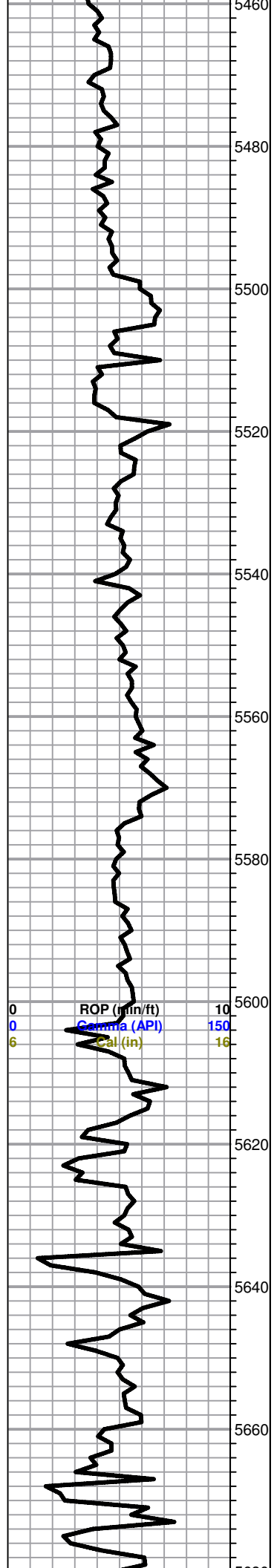
LS, tan, brown, FXL, cherty, poor visible porosity, no shows, no odor

Black carb Sh.

LS, tan, brown, FXL, chalky, few ool, poorly developed, poor scattered porosity, no shows, no odor

LS, tan, buff, FXL, dense, few foss, poor visible





LS, tan, bun, FXL, dense, few foss, poor visible porosity, no shows no ,odor

5480 LS, cream to tan, FXL, dense, few foss, poor visible porosity, no shows

5500 LS, gry, tan, earthy, chalky in parts, poor visible porosity no shows, no flor. cut, no odor

5520 Sh. gry, black, silty

5540 LS, cream, tan, mottled, FXL, poor visible porosity, cherty in parts, no shows

5560 LS, tan, brown, FXL, dense, poor scattered porosity, no shows

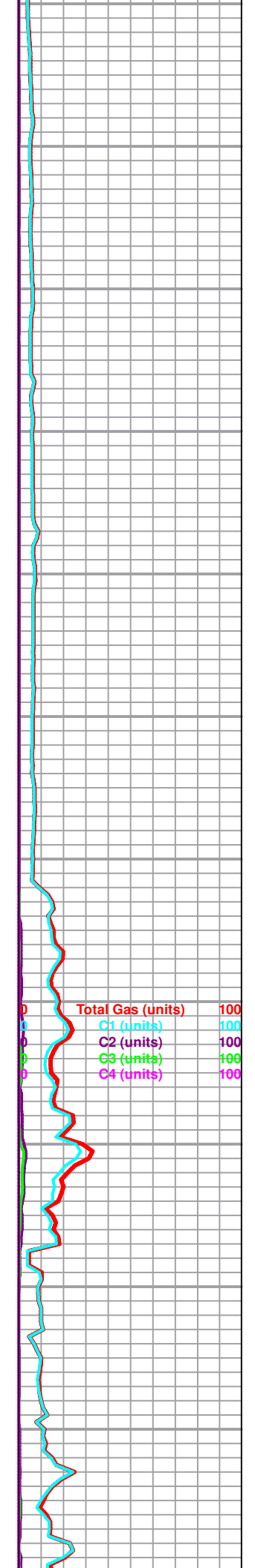
5580 Sh. black, gry, silty,
Trc. LS, tan, FXL, dense, few foss, poor scattered porosity, no shows

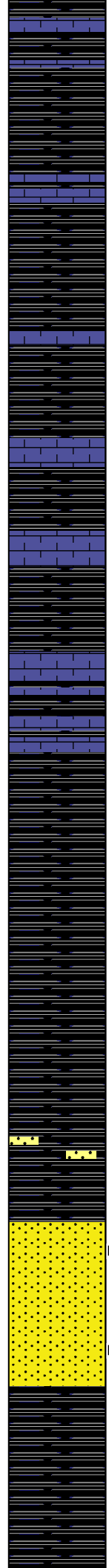
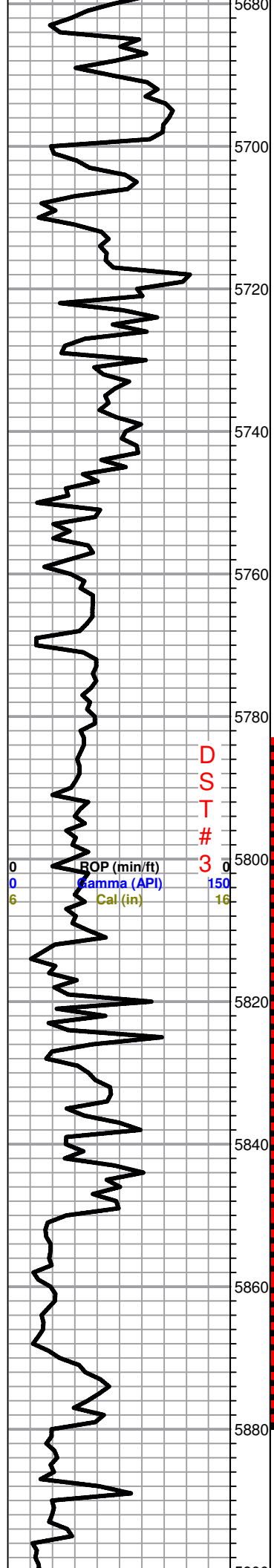
5600 Sh. black gry, silty

5620 Sh. black, gry, silty, Trc. LS, tan, cream, poor visible porosity, no shows

5640 Sh. black carb, gry, silty,
Trc. LS, white, FXL, chalky, poor visible porosity, no shows no odor

5660 LS, tan, brown, FXL, cherty, dense, poor visible porosity, no shows, Trc. black carb Sh.





LS, tan, cream, FXL, dense, cherty, poor visible porosity, no shows

Black carb Sh.

Black carb Sh.
Trc. LS, tan, brown, mottled, FXL, dense, cherty in parts, poor visible porosity, no shows

Black carb Sh. trc. LS, cream to tan, FXL, few chalky, poor visible porosity, no shows

Black carb. Sh. trc. LS, tan, brown, FXL, chalky, no shows no odor

Morrow 5806.0 (-3062.0)

Black carb Sh. few silty maroon,

Black carb Sh.

Sd. tan, brown, F. grain, well sorted, Lt. flor cut , no odor

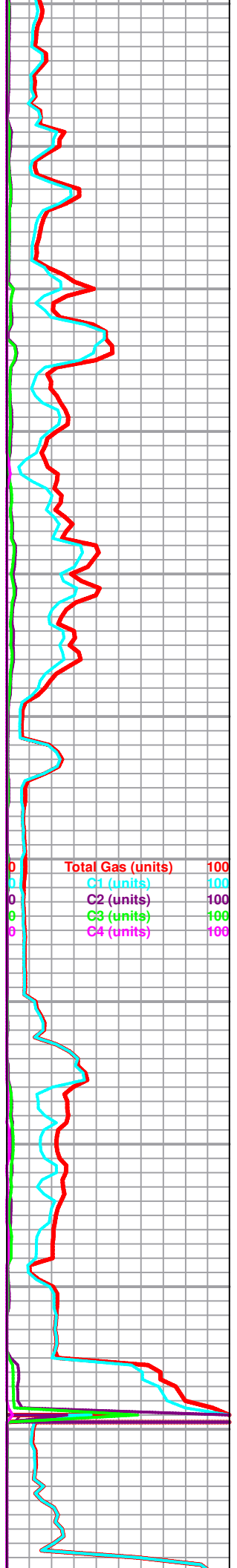
Morrow Sd. 5845.0 (-3101.0)

Sd. white, F.grain, well sorted, sub angular, Lt. sppty flor. cut, no odor

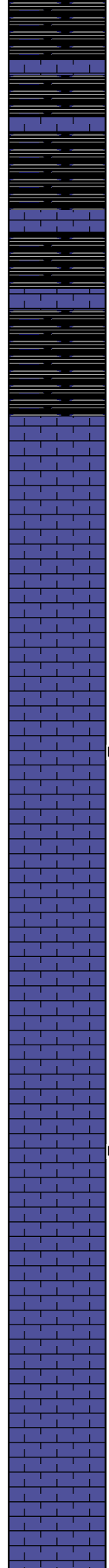
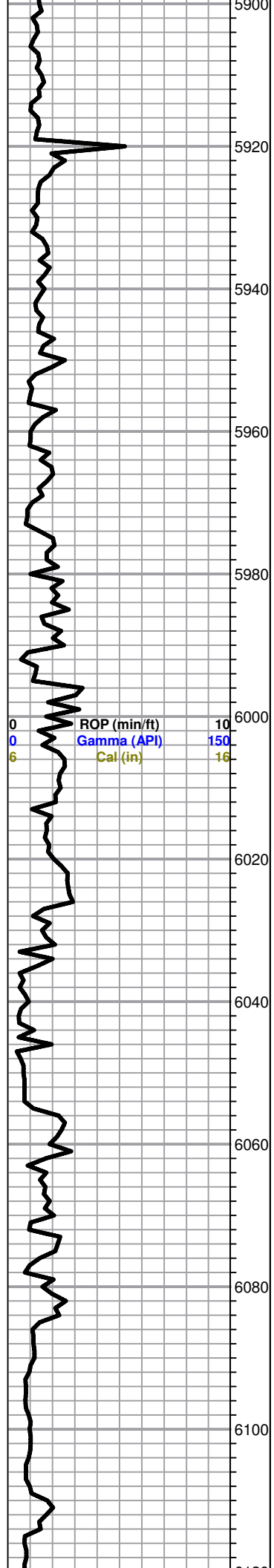
Sd. white, tan, F-M grain, well sorted, sub angular, good flor. cut, no odor, no SFO

Black carb Sh.

Black carb. few maroon, sh.



0	Total Gas (units)	100
0	C1 (units)	100
0	C2 (units)	100
0	C3 (units)	100
0	C4 (units)	100



Black carb Sh.

5920

Sh. black, gry, maroon, silty, trc. LS, cream, few ool, poor scattered porosity, chalky, no shows

5940

Black carb

Chester 5952.0 (-3208.0)

5960

LS, cream, tan, FXL, chalky in parts, poor visible porosity, no shows, no flor. cut.

5980

0 ROP (min/ft) 10
0 Gamma (API) 150
6 Cal (in) 16

6000

LS, cream to tan, FXL, chalky, poor scattered porosity, Lt. flor cut. no odor

6020

LS, cream to tan, FXL, poor scattered porosity, no shows

6040

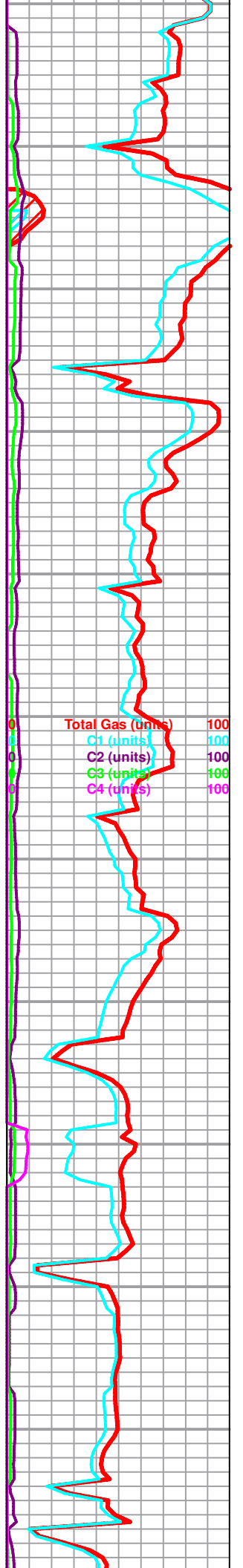
6060

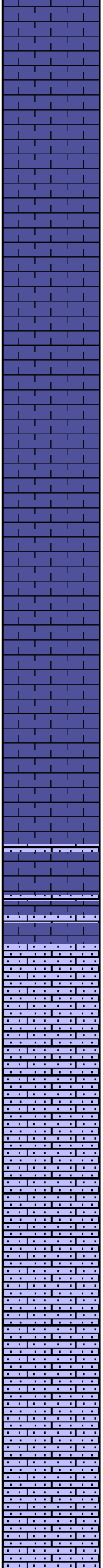
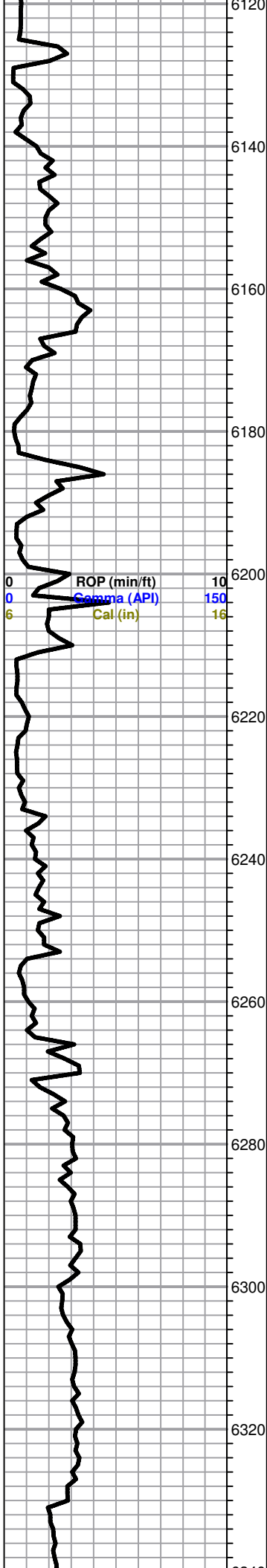
LS, cream gry, tan, FXL, dense, poor visible porosity, Lt. flor cut (min. ??) no odor

6080

6100

LS, cream to tan, FXL, dense, poor visible porosity, no shows no odor





LS, tan, cream, FXL, few foss, scattered porosity, no shows no odor

LS, tan, FXL, cherty in parts, poor scattered porosity, no shows, no odor

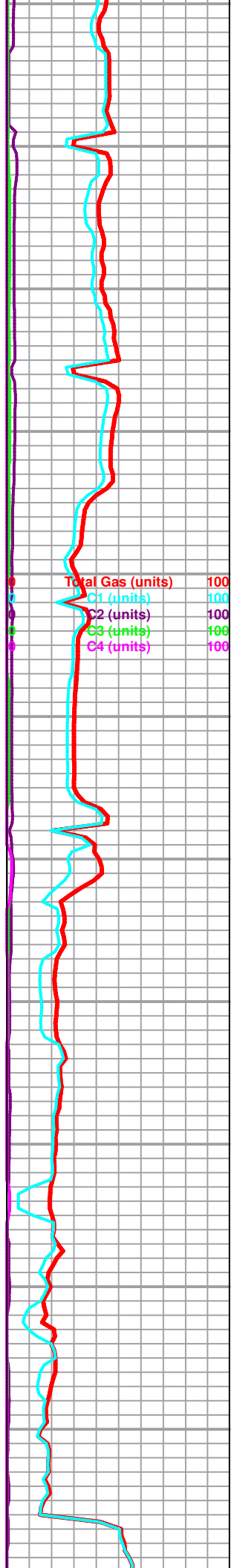
LS, tan, brown, FXL, cherty in parts, few LS, tan, brown, micro ool, friable, no shows, no odor.

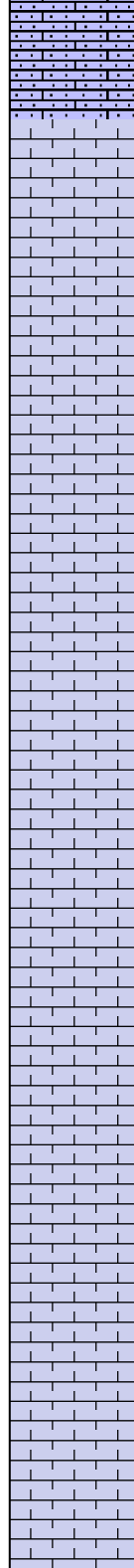
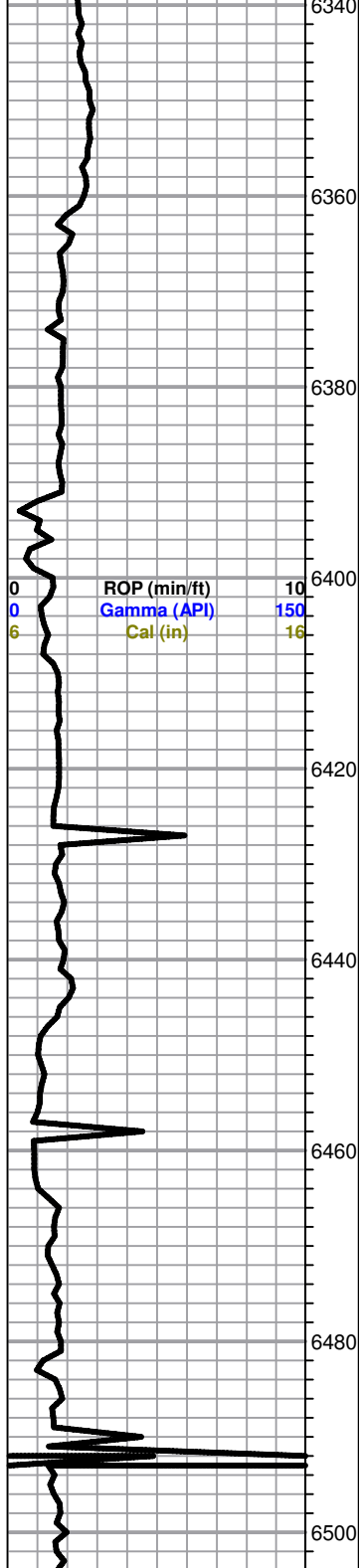
Ste. Gen 6256.0 (-3512.0)

LS, tan, micro ool, friable no shows

LS, tan, brown, micro ool, friable, no shows

LS, tan, brown, maroon, micro ool, no shows





St. Louis 6351.0 (-3607.0)

LS, cream to tan, chalky, few foss, poor scattered porosity, no shows

LS, cream, FXL, V. chalky, few ool, no flor. cut no odor

LS, cream, FXL, V. chalky, poor visible porosity, no shows

LS, cream, to tan, FXL, few ool, poor scattered porosity, no shows

RTD 6500.0 (-3756.0)

