

Ls-crm/tan, fxln to rare med xln, few fossils, scattered por, chert-crm/gry

Ls-crm/tan, slightly sucrosic, poor vis por, few fossils chalky in part,

Ls-crm/an, fxln, fine to med xln, slightly dolomitic, poor vis por, chert-gry/tan, Shale- gry

Ls-crm/tan, fxln, dense, few fossils, poor vis por

Ls-crm/tan, fxln, slightly sucrosic, poor vis por, slightly chalky, chert-gry/tan

A/A

**Heebner 3416.0 (-1450.0) -1452.0**

Black carbon shale

Shale- gry/gmish

**Toronto 3436.0 (-1470.0) -1470.0**

Ls-crm/tan, fine to few med xln, scattered por, chalky

Shale gry/gm, firm

Shale-gry/gm, slightly silty, mica

A/A

Shale-gry, mica, slightly silty, soft

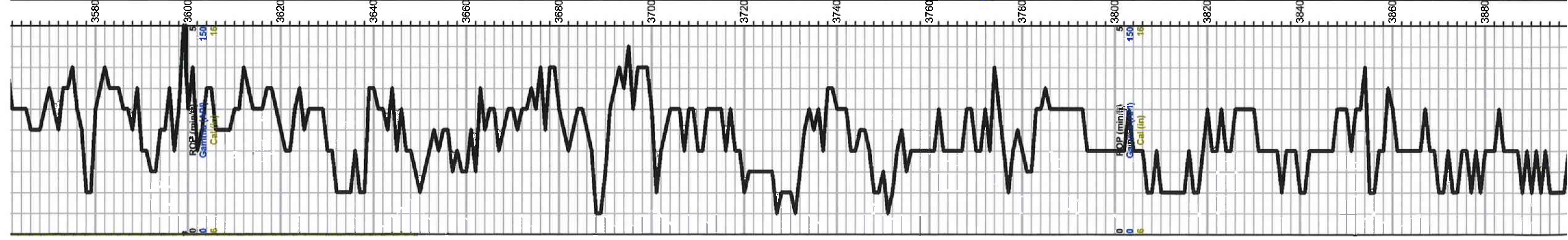
A/A

**Brown Lime 3547.0 (-1581.0) -1582.0**

Ls-tan/buff, fxln, dense, poor vis por, cherty in part

**Lansing 3561.0 (-1595.0) -1596.0**





Ls-crm/wht, bxdn, fossils/ool, poor vis por, slightly chalky	0	Total Gas (units)	100
Ls-crm/tan, fxdn, fossils, poor scattered por, no vis shows	0	C1 (units)	100
Ls-crm/tan, fxdn, fossils/ool, poor Shale-gry/gm	0	C2 (units)	100
Ls-crm/tan/lt gry, fxdn, poor vis por, dense	0	C3 (units)	100
Ls-crm/wht, fxdn, chalky, ool, scattered iner ool por,	0	C4 (units)	100
A/A chert-tan/gry			
Ls-crm/wht/ fxdn, ool, scattered iner xin por, slightly chalky, chert-tan/gry			
Ls-crm/wht, fxdn, chalky, poor vis por			
Ls-crm/wht, fxdn, ool, slightly sucrosic, dense, poor scattered por, slightly chalky			
Ls-crm/wht, fxdn, dense, poor vis por, chert-crm/tan, chalky in part			
Ls-crm/tan, fxdn, ool, slightly cherty, scattered finely vug por, trace stains, Very weak SFO(dead)			
Ls-crm/tan, fxdn, scattered finely vug por, trace black stains, NSFO, chalky			
DST #1-3678-3785 30-45-45-60 IF: BOB 18 min ISI: No return			
Recovery: 553' Gas In Pipe 200' Mud with oil Scum			
Pressures: ESIP 943 psi FSIP 936 psi IFP 16-60 psf EEP 62-98 psi HSH 1714-1714 psi			
Ls-crm/tan, fxdn, ool/oompor, brown to black stains, NSFO, no odor, chert-tan/crm/wht			
Ls-crm/tan, fxdn, dense, ool, poor vis por cherty in part			
Ls-crm/tan, fxdn, dense, scattered vuggy por, trace light brown stains, NSFO, faint odor, chalky			
Ls-crm/tan, fxdn, poor vis por, no vis shows, no odor, slightly chalky			
Ls-crm/tan, fxdn, poor scattered iner xin to vug por, trace black stains, NSFO, no odor, slightly chalky			
Shale-gry/brown/green			
Ls-wht/crm, fxdn, ool, poor scattered por, slightly chalky			
Ls-tan/lt gry, fxdn, dense, poor vs por,			
A/A Shale-gry/brwn/greenish			
A/A			
Chert-crm/tan			
Shale-gry/greenish/brown			
Ls-crm/tan/lt gry, fxdn, slightly chalky, few fossils, poor vis por, Shale-gry/gm			

Snake-gry/grn

**Viola 3907.0 (-1941.0) -1942.0**

Chert-tan, semi trip, poor fract por? no vis stains, no odor

Chert-tan/wht, tripolitic, scattered dark brown to black stains,

A/A

**Simpson 3946.0 (-1980.0) -1981.0**

Shale-turg/brown/green-few mica

A/A

**Simpson Sand 3966.0 (-2000.0) -1998.0**

Sand-brwn/tan, fine grained, poor inner gran por, slightly saturated/staining, SFO, fair odor

Shale-gry/grn/turq

**Arbuckle 3999.0 (-2033.0) -2036.0**

Dol-wht/crm, fine to med xin, dense, scattered ppt to inner xin por, no vis shows, no odor

Dol-crm/tan, fine to med xin, few rhob, fair inner xin por, no vis shows, no odor

Dol-crm/tan, fine to med rhomb xin, scattered fair inner xin to finely vug por, no vis shows, chert-tan/crm

Dol-tan, fine xin, dense, poor inner xin por, cherty in part

Dol-crm/tan, fine to med xin slighty sucrosic, poor vis por, no vis shows, no odor

A/A chert-tan/crm/gry

**Total Depth 4090.0 (-2124.0) -2124.0**

DST #2 3912-3980  
45-40-45-60

IF: Weak built to 1"

Recovery:

20' SOGCM (11g 9a 1w 79m)

Pressures:

ISIP 360 psi

FSIP 396 psi

IFP 10-57 psi

FFP 23-28 psi

HSH 1849-1822 psi

0 Total Gas (units) 100  
0 CH (units) 100  
0 C2 (units) 100  
0 C3 (units) 100  
0 CA (units) 100

