

OPERATOR

Company: L.D. Drilling, Inc.
 Address: 7 SW 26th Ave.

Great Bend, KS 67530
 Contact Geologist: Kim Shoemaker
 Contact Phone Nbr: 316-772-2939
 Well Name: Apple #1-6
 Location: Sec. 6 - T6S - R17W
 API: 15-163-24216-0000
 Pool:
 State: Kansas

Field: Wildcat
 Country: USA

Scale 1:240 Imperial

Well Name: Apple #1-6
 Surface Location: Sec. 6 - T6S - R17W
 Bottom Location:
 API: 15-163-24216-0000
 License Number: 6039
 Spud Date: 6/27/2014 Time: 9:30 AM
 Region: Rooks County
 Drilling Completed: 7/4/2014 Time: 8:30 PM
 Surface Coordinates: 2048' FSL & 1680' FWL
 Bottom Hole Coordinates:
 Ground Elevation: 1926.00ft
 K.B. Elevation: 1933.00ft
 Logged Interval: 2700.00ft To: 3360.00ft
 Total Depth: 3360.00ft
 Formation: Lansing/Kansas City
 Drilling Fluid Type: Chemical/Fresh Water Gel

SURFACE CO-ORDINATES

Well Type: Vertical
 Longitude:
 Latitude:
 N/S Co-ord: 2048' FSL
 E/W Co-ord: 1680' FWL

LOGGED BY

Keith Reavis
Consulting Geologist

Company: Keith Reavis, Inc.
 Address: 3420 22nd Street
 Great Bend, KS 67530

Phone Nbr: 620-617-4091
 Logged By: Keith Reavis and Logan Walker Name: Keith Reavis

CONTRACTOR

Contractor: Skytop Drilling
 Rig #: 1
 Rig Type: mud rotary
 Spud Date: 6/27/2014 Time: 9:30 AM
 TD Date: 7/4/2014 Time: 8:30 PM
 Rig Release: Time:

ELEVATIONS

K.B. Elevation: 1933.00ft Ground Elevation: 1926.00ft
 K.B. to Ground: 7.00ft

NOTES

Due to negative results of all drill stem tests conducted on this well, it was determined that the Apple #1 be plugged and abandoned as a dry test. No electrical logs were run on this well.

Respectfully submitted
Keith Reavis and Logan Walker

Image Header 01

LD Drilling, Inc.






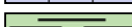


daily drilling report

DATE	7:00 AM DEPTH	REMARKS
06/30/2014		Geologist Keith Reavis and Logan Walker on location @ 0730 hrs, 2634 ft. drilling ahead, show in Topeka warrants test, short trip, TOH for DST #1
07/01/2014	2915	conduct and complete DST #1, TIH w/bit, drill lower Topeka, show warrants test, TOH for DST #2
07/02/2014	3040	conduct and complete DST #2, TIH w/bit, resumed drilling Heebner, Lansing A thru D, show warrants test, TOH for DST #3, conducting DST #3
07/03/2014	3192	complete DST #3, successful test, TIH w/bit, resumed drilling, shows in F and G warrant test, conduct and complete DST #4, successful test, TIH w/bit resume drilling
07/04/2014	3290	shows in the H and I warrant test, TOH for DST #5, conduct and complete DST #5 successful test, TIH w/bit resume drilling, TD @3360 2030hrs off location @ 2230 hrs

well comparison sheet

DRILLING WELL					COMPARISON WELL				COMPARISON WELL			
Well # 2048' FSL & 1680' FWL Sec 6-T6S-R17W					Mclaughin #1 SE SE SW Sec 6-T6S-R17W				Betty #1-12 919 FNL & 1408' FWL Sec 12-T6S-R18W			
1933 KB					1923 KB		Structural Relationship		1912 KB		Structural Relationship	
Formation	Sample	Sub-Sea	Log	Sub-Sea	Log	Sub-Sea	Sample	Log	Log	Sub-Sea	Sample	Log
Topeka	2874	-941	no log		2865	-942	1		2846	-934	-7	
Heebner	3078	-1145			3075	-1152	7		3047	-1135	-10	
Lansing	3118	-1185			3118	-1195	10		3088	-1165	-20	
Muncie Creek	3249	-1316							3213	-1290	-26	
Base KC	3352	-1419							3320	-1397	-22	
Arbuckle	not reached				3535	-1612			3440	-1517		
Total Depth	3360	-1427			3545	-1622	195		3483	-1560	133	
	3102	-1169										

ROCK TYPES

 sdymst	 Lmst fw7>	 shale, gry	 shale, red
 Lmst fw<7	 shale, grn	 Carbon Sh	 Ss

ACCESSORIES

MINERAL
 ~ Glauconite
 P Pyrite

FOSSIL
 ^ Bioclastic or Fragmental
 O Crinoids
 F Fossils < 20%
 O Oolite

STRINGER
 ~ Chert

TEXTURE
 C Chalky
 CX Cryptocrystalline

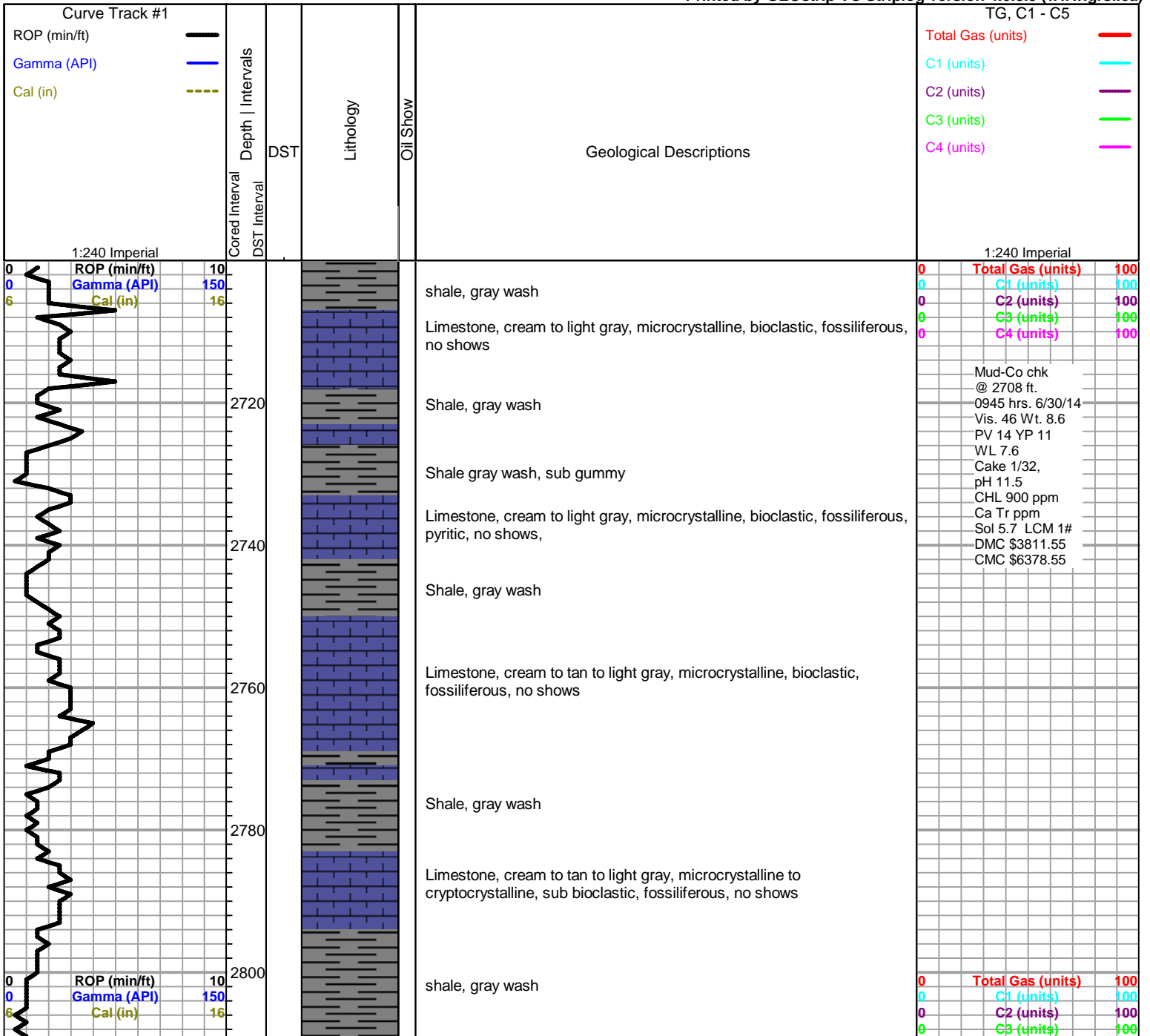
OTHER SYMBOLS

MISC
 DR Daily Report
 Digital Photo
 Document
 Folder
 Link
 Vertical Log File
 Horizontal Log File
 Core Log File
 Drill Cuttings Rpt

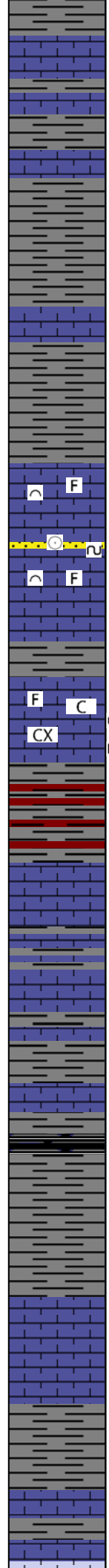
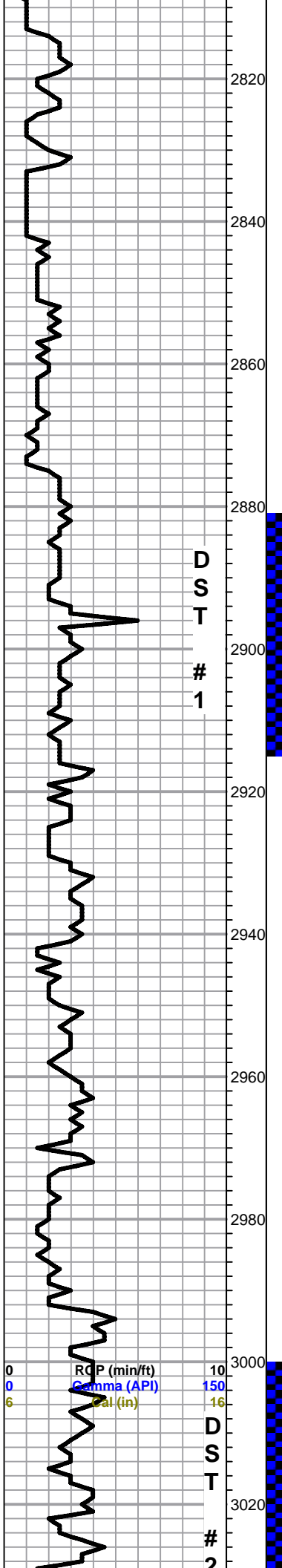
Oil Show
 ● Good Show
 ● Fair Show
 ● Poor Show
 ○ Spotted or Trace
 ○ Questionable Stn
 D Dead Oil Stn
 ■ Fluorescence
 * Gas

DST
 DST Int
 DST alt
 Core
 tail pipe

Printed by GEOstrip VC Striplog version 4.0.8.9 (www.grsi.ca)



Mud-Co chk
 @ 2708 ft.
 0945 hrs. 6/30/14
 Vis. 46 Wt. 8.6
 PV 14 YP 11
 WL 7.6
 Cake 1/32,
 pH 11.5
 CHL 900 ppm
 Ca Tr ppm
 Sol 5.7 LCM 1#
 DMC \$3811.55
 CMC \$6378.55



Limestone, cream to tan, cryptocrystalline, fossiliferous, dense, no shows

shale, gray wash

shale, gray wash

Topeka 2874 -941

Limestone, cream to light gray to dark gray, microcrystalline, bioclastic, fossiliferous, no shows

Limestone to sandy limestone, cream to yellow to light gray, microcrystalline to cryptocryalline, bioclastic, fossiliferous, green glauconite no shows

Limestone, cream to tan to light gray, some mottled, crypto-microcrystalline, fossiliferous, soft to dense, sub chalky spotty oil in tray, free oil on break, fleeting odor, slight sheen on water
 30 min sample was tight and spotty oil on break, fleeting odor
 60 min sample was tight and more oil on break, spotty oil in tray, fleeting odor

shale, red to gray, gray wash

Limestone, cream to tan to light gray, microcrystalline, fossiliferous, sub chalky, soft, no shows

Limestone, cream to light gray, microcrystalline to cryptocrystalline, fossiliferous, pyritic, dense, fractures, no shows

Limestone, white to cream, microcrystalline, fossiliferous, weathered, soft, no shows

shale, gray wash, silty, sub gray gummy

shale, gray wash to dark gray, silty, dark sandstone, fine grain, well sorted, well cemented

shale, gray wash to pale green, silty, sub sandy

Limestone, white to cream, cryptocrystalline, bioclastic, fossiliferous, sub chalky, pyritic, no shows

Limestone, white to cream, cryptocrystalline, bioclastics, fossiliferous, surface etching, weathered, dense, brown chert, no shows

0	C4 (units)	100
0	Total Gas (units)	100
0	C1 (units)	100
0	C2 (units)	100
0	C3 (units)	100
0	C4 (units)	100

Mud-Co chk @ 2915 ft.
 0735 hrs. 7/1/14
 Vis. 50 Wt. 9.0
 PV 14 YP 27
 WL 7.2
 Cake 1/32, pH 11.0
 CHL 300 ppm
 Ca Tr ppm
 Sol 2.9 LCM 1#
 DMC \$257.60
 CMC \$6636.15

D S T # 2



cfs @3040'
1700 hrs 7-1-14

3040
3060
3080
3100
3120
3140
3160
3180
3200
3220
3240

cfs @3172'
1700 hrs 7/2/14

ROP (min/ft)
Gamma (API)
Cal (in)

cfs @3214'
0840 hrs
7/3/14

Limestone, white to cream, cryptocrystalline, bioclastic, fossiliferous, oolitic, pin hole vugs, surface etching, black staining, chalky, dense, fair to poor fluorescence, good cut, free oil on break, good odor, better shows in the 30/60 min sample

Shale, gray wash

Limestone, cream to light gray, cryptocrystalline, fossiliferous, soft, sub chalky, no show

shale, gray wash

Heebner 3078 -1145

Shale, black carbonaceous

Sandy Limestone, cream to light gray, microcrystalline, fossiliferous, well sorted, well cemented, sub chalky, no show

Limestone, white to cream to light gray, microcrystalline, bioclastic, fossiliferous, weathered, chalky, no show

Toronto 3102 -1169

Limestone, white to cream to light gray, microcrystalline to cryptocrystalline, fossiliferous, weathered, dense, no show

Lansing 3118 -1185

Limestone, white to cream, microcrystalline, bioclastic, fossiliferous, dense, dead black stain, fleeting odor, no shows

Limestone, white to cream, cryptocrystalline to microcrystalline, bioclastic, fossiliferous, very dense, pin hole vugs, surface etching, dead black stain in vugs, crystallized vugs, good odor, no shows

Limestone, cream, cryptocrystalline, fossiliferous, white/gray chert, sharp, fractured, soft to dense, pyritic, sub chalky, no show

Limestone, white to cream to tan, cryptocrystalline, fossiliferous, weathered, sub chalky, dense, free oil in tray, gas bubbles, free oil on break, strong odor

Shale, red to gray to pale green, red wash, silty, red gummy

Limestone, cream to light gray, microcrystalline, fossiliferous, oolitic, soft to dense, surface etching

Limestone, cream to light gray to pale green, microcrystalline, fossiliferous, pyritic, sd w/show, free oil on break, fleeting odor

Limestone, white to cream, microcrystalline, skeletal bioclastic, oolitic, fossiliferous, surface etching, weathered, pin hole vugs, soft, spotty free oil in tray, free on break, good odor, fair cut

Limestone, white, microcrystalline to cryptocrystalline, sub bioclastic, fossiliferous, soft, sharp, sub chalky, fleeting odor

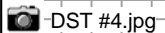
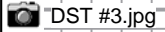
Shale, red to gray to pale green, silty

Limestone, white to cream, microcrystalline, bioclastic, fossiliferous, pin hole vugs, surface etching, soft, weathered, spotty free oil in tray, spotty free oil on break, strong odor

Muncie Creek 3249 -1316

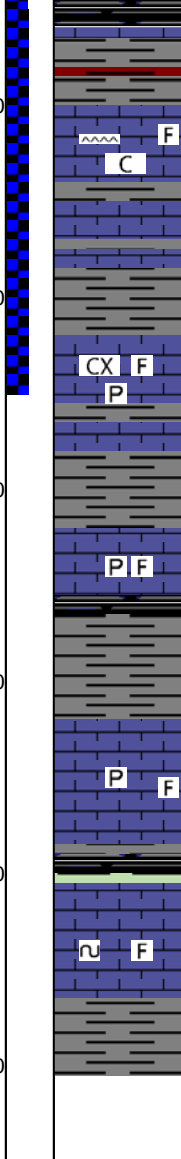
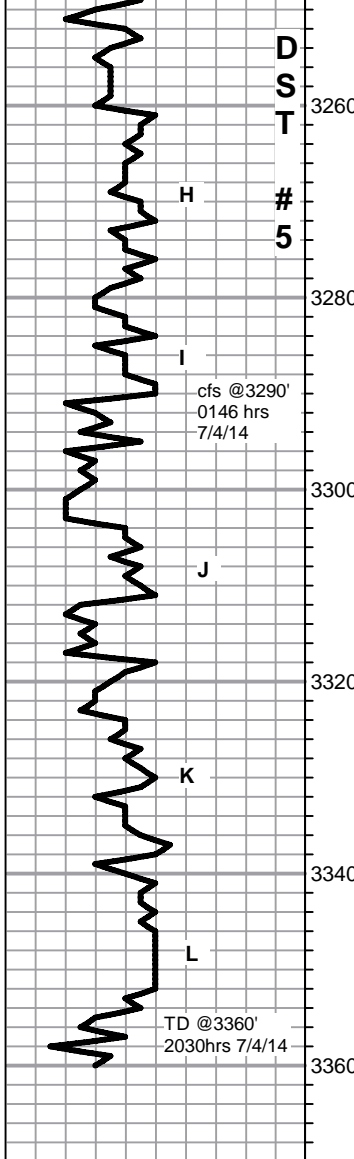
(strapped pipe 2.5' off)

Mud-Co chk @ 3053 ft. 0455 hrs. 7/2/14 Vis. 46 Wt. 9.1 PV 12 YP 17 WL 7.6 Cake 1/32, pH 10.5 CHL 1200 ppm Ca Tr ppm Sol 5.7 LCM 1# DMC \$0.00 CMC \$6636.15



0	Total Gas (units)	100
0	C1 (units)	100
0	C2 (units)	100
0	C3 (units)	100
0	C4 (units)	100

Mud-Co chk @ 3210 ft. 0800 hrs. 7/3/14 Vis. 50 Wt. 9.1 PV 14 YP 16 WL 6.0 Cake 1/32, pH 10.5 CHL 900 ppm Ca Tr ppm Sol 5.7 LCM 1# DMC \$537.60 CMC \$7173.75



Shale, gray wash to black carbonaceous to red, silty, gray gummy

DST #5.jpg

Limestone, white, microcrystalline, fossiliferous, white to translucent chert, sharp, soft to dense, sub chalky, fractured, no shows

Shale, gray wash, silty, gray gummy

Limestone, white to cream, cryptocrystalline, fossiliferous, pin hole vugs, surface etchings, chalky, soft, weathered, pyritic, free oil in tray, free oil on break, sheen on water, excellent cut, good fluorescence, strong odor

Shale, gray wash, silty

Limestone, cream to tan, microcrystalline to cryptocrystalline, fossiliferous, surface etching, sharp, pyritic, pin hole vugs, trace free oil on break, fleeting odor

Stark 3311 -1378

Shale, gray wash to black carbonaceous

Limestone, white to cream, microcrystalline, fossiliferous, oolitic, surface etching, weathered, sharp, soft to dense, pyritic, pin hole vugs, trace free oil on break, fleeting odor

Limestone, white to cream, microcrystalline, fossiliferous, glauconite, oolitic, soft, sub chalky, weathered, sharp, no shows

BKC 3352 -1419

Rotary TD @ 3360' 2030 hrs 7/4/14

Mud-Co chk
@ 3290 ft.
0900 hrs. 7/4/14
Vis. 51 Wt. 9.1
PV 14 YP 24
WL 5.6
Cake 1/32,
pH 10.0
CHL 11000 ppm
Ca 20 ppm
Sol 5.7 LCM 1#
DMC \$0.00
CMC \$7173.75



DST #1.jpg
DIAMOND TESTING
 P.O. Box 157
 HOISINGTON, KANSAS 67544
 (800) 542-7313
DRILL-STEM TEST TICKET
 FILE: APPLE1-6DST1

TIME ON: 11:40 7-1-14
 TIME OFF: 06:59 7-1-14

Company L.D. DRILLING, INC. Lease & Well No. APPLE #1-6
 Contractor SKYTOP DRILLING RIG #1 Charge to L.D. DRILLING, INC.
 Elevation 1933 KB Formation TOPEKA Effective Pay _____ Ft. Ticket No. T362
 Date 7-1-14 Sec. 6 Twp. 6 S Range 17 W County ROOKS State KANSAS
 Test Approved By KEITH REAVIS Diamond Representative TIMOTHY T. VENTERS

Formation Test No. 1 Interval Tested from 2881 ft. to 2915 ft. Total Depth 2915 ft.
 Packer Depth 2876 ft. Size 6 3/4 in. Packer depth _____ ft. Size 6 3/4 in.
 Packer Depth 2881 ft. Size 6 3/4 in. Packer depth _____ ft. Size 6 3/4 in.

Depth of Selective Zone Set _____
 Top Recorder Depth (Inside) 2867 ft. Recorder Number 8457 Cap. 10,000 P.S.I.
 Bottom Recorder Depth (Outside) 2912 ft. Recorder Number 11029 Cap. 5,025 P.S.I.
 Below Straddle Recorder Depth _____ ft. Recorder Number _____ Cap. _____ P.S.I.

Mud Type CHEMICAL Viscosity 46 Drill Collar Length 144 ft. I.D. 2 1/4 in.
 Weight 8.6 Water Loss 7.6 cc. Weight Pipe Length 0 ft. I.D. 2 7/8 in.
 Chlorides 900 P.P.M. Drill Pipe Length 2709 ft. I.D. 3 1/2 in.
 Jars: Make STERLING Serial Number STY. JT. Test Tool Length 28 ft. Tool Size 3 1/2-IF in.
 Did Well Flow? NO Reversed Out NO Anchor Length 34 ft. Size 4 1/2-FH in.
 Main Hole Size 7 7/8 Tool Joint Size 4 1/2 XH in. Surface Choke Size 1 in. Bottom Choke Size 5/8 in.

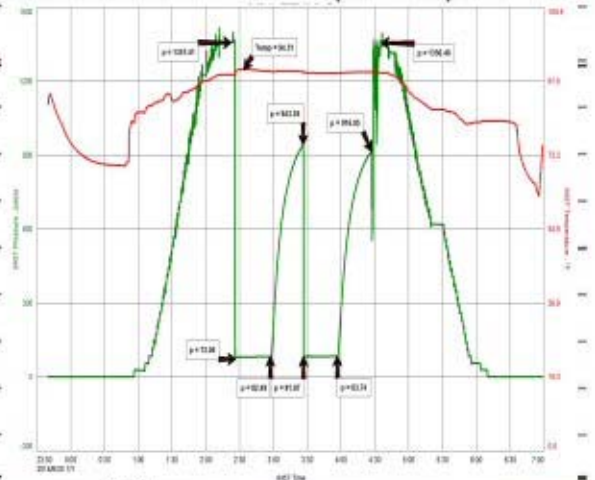
Blow: 1st Open: STRONG 4 INCH BLOW, BUILDING TO 4 1/2 INCHES. (NO BB)

2nd Open: VERY WEAK SURFACE BLOW, LASTING 2 MIN.

Recovered 145 ft. of MUD
 Recovered _____ ft. of _____
 Recovered _____ ft. of _____
 Recovered _____ ft. of _____
 Recovered _____ ft. of _____
 Recovered _____ ft. of _____

Remarks: WE SLID ABOUT 20 FEET WHEN SETTING TOOL.

TOOL SAMPLE: 100% MUD



Time Set Packer(s) 2:26 AM A.M. P.M. Time Started Off Bottom 4:26 AM A.M. P.M. Maximum Temperature 95 deg.
 Initial Hydrostatic Pressure..... (A) 1357 P.S.I.
 Initial Flow Period..... Minutes 30 (B) 72 P.S.I. to (C) 82 P.S.I.
 Initial Closed In Period..... Minutes 30 (D) 943 P.S.I.
 Final Flow Period..... Minutes 30 (E) 82 P.S.I. to (F) 84 P.S.I.
 Final Closed In Period..... Minutes 30 (G) 917 P.S.I.
 Final Hydrostatic Pressure..... (H) 1356 P.S.I.



DST #2.jpg
DIAMOND TESTING
 P.O. Box 157
 HOISINGTON, KANSAS 67544
 (800) 542-7313
DRILL-STEM TEST TICKET
 FILE: APPLE1-6DST2

TIME ON: 21:15 7-1-14
 TIME OFF: 05:03 7-2-14

Company L.D. DRILLING, INC. Lease & Well No. APPLE #1-6
 Contractor SKYTOP DRILLING RIG #1 Charge to L.D. DRILLING, INC.
 Elevation 1933 KB Formation LOWER TOPEKA Effective Pay _____ Ft. Ticket No. T363
 Date 7-1-14 Sec. 6 Twp. 6 S Range 17 W County ROOKS State KANSAS
 Test Approved By KEITH REAVIS Diamond Representative TIMOTHY T. VENTERS

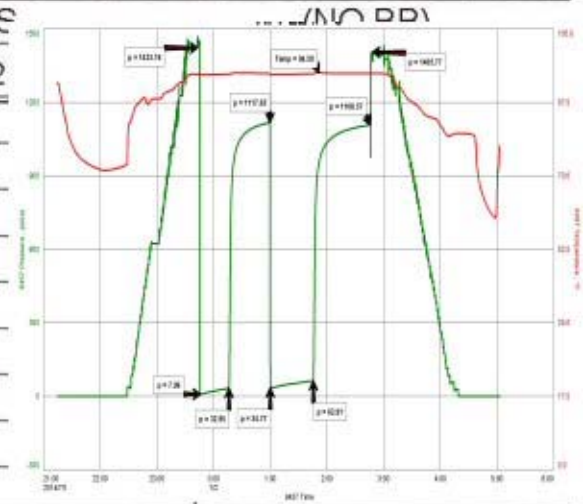
Formation Test No. 2 Interval Tested from 3000 ft. to 3040 ft. Total Depth 3040 ft.
 Packer Depth 2995 ft. Size 6 3/4 in. Packer depth _____ ft. Size 6 3/4 in.
 Packer Depth 3000 ft. Size 6 3/4 in. Packer depth _____ ft. Size 6 3/4 in.

Depth of Selective Zone Set _____
 Top Recorder Depth (Inside) 2986 ft. Recorder Number 8457 Cap. 10,000 P.S.I.
 Bottom Recorder Depth (Outside) 3037 ft. Recorder Number 11029 Cap. 5,025 P.S.I.
 Below Straddle Recorder Depth _____ ft. Recorder Number _____ Cap. _____ P.S.I.

Mud Type CHEMICAL Viscosity 50 Drill Collar Length 144 ft. I.D. 2 1/4 in.
 Weight 9.0 Water Loss 7.2 cc. Weight Pipe Length 0 ft. I.D. 2 7/8 in.
 Chlorides 300 P.P.M. Drill Pipe Length 2828 ft. I.D. 3 1/2 in.
 Jars: Make STERLING Serial Number STY. JT. Test Tool Length 28 ft. Tool Size 3 1/2-IF in.
 Did Well Flow? NO Reversed Out NO Anchor Length 40 ft. Size 4 1/2-FH in.
 Main Hole Size 7 7/8 Tool Joint Size 4 1/2 XH in. Surface Choke Size 1 in. Bottom Choke Size 5/8 in.

Blow: 1st Open: WEAK 1/4 INCH BLOW, BUILDING TO 2 INCHES
2nd Open: VERY WEAK SURFACE BLOW, BUILDING TO 2 1/2

Recovered 65 ft. of MUD
 Recovered 55 ft. of WCM, 37% WATER, 63% MUD
 Recovered 120 ft. of TOTAL FLUID
 Recovered _____ ft. of _____
 Recovered _____ ft. of _____
 Recovered _____ ft. of _____
 Remarks: _____



TOOL SAMPLE: TRACE OIL, 14% WATER, 86% MUD

Time Set Packer(s) 11:45 PM A.M. P.M. Time Started Off Bottom 2:45 AM A.M. P.M. Maximum Temperature 95 deg.
 Initial Hydrostatic Pressure..... (A) 1423 P.S.I.
 Initial Flow Period..... Minutes 30 (B) 8 P.S.I. to (C) 33 P.S.I.
 Initial Closed In Period..... Minutes 45 (D) 1118 P.S.I.
 Final Flow Period..... Minutes 45 (E) 35 P.S.I. to (F) 63 P.S.I.
 Final Closed In Period..... Minutes 60 (G) 1109 P.S.I.
 Final Hydrostatic Pressure..... (H) 1406 P.S.I.



DST #3.jpg

DIAMOND TESTING
 P.O. Box 157
 HOISINGTON, KANSAS 67544
 (800) 542-7313
DRILL-STEM TEST TICKET
 FILE: APPLE1-6DST3

TIME ON: 19:20 7-2-14
 TIME OFF: 02:53 7-3-14

Company L.D. DRILLING, INC. Lease & Well No. APPLE #1-6
 Contractor SKYTOP DRILLING RIG #1 Charge to L.D. DRILLING, INC.
 Elevation 1933 KB Formation LANSING "A-B" Effective Pay _____ Ft. Ticket No. T364
 Date 7-2-14 Sec. 6 Twp. _____ 6 S Range _____ 17 W County ROOKS State KANSAS
 Test Approved By KEITH REAVIS Diamond Representative TIMOTHY T. VENTERS

Formation Test No. 3 Interval Tested from 3110 ft. to 3172 ft. Total Depth 3172 ft.
 Packer Depth 3105 ft. Size 6 3/4 in. Packer depth _____ ft. Size 6 3/4 in.
 Packer Depth 3110 ft. Size 6 3/4 in. Packer depth _____ ft. Size 6 3/4 in.

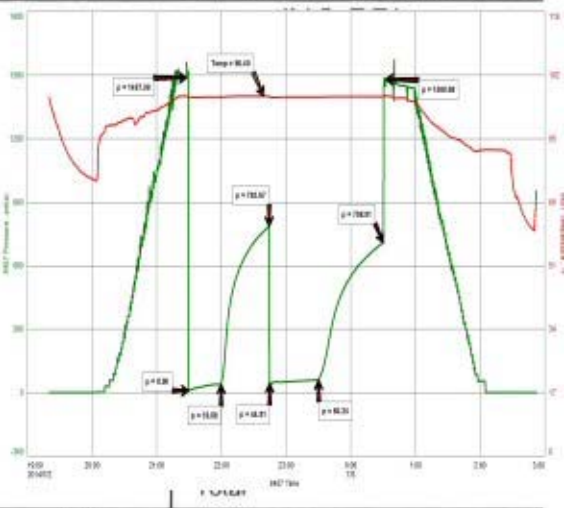
Depth of Selective Zone Set

Top Recorder Depth (Inside) 3096 ft. Recorder Number 8457 Cap. 10,000 P.S.I.
 Bottom Recorder Depth (Outside) 3169 ft. Recorder Number 11029 Cap. 5,025 P.S.I.
 Below Straddle Recorder Depth _____ ft. Recorder Number _____ Cap. _____ P.S.I.

Mud Type CHEMICAL Viscosity 46 Drill Collar Length 144 ft. I.D. 2 1/4 in.
 Weight 9.1 Water Loss 7.6 cc. Weight Pipe Length 0 ft. I.D. 2 7/8 in.
 Chlorides 1,200 P.P.M. Drill Pipe Length 2938 ft. I.D. 3 1/2 in.
 Jars: Make STERLING Serial Number STY. JT. Test Tool Length 28 ft. Tool Size 3 1/2-IF in.
 Did Well Flow? NO Reversed Out NO Anchor Length 30 ft. Size 4 1/2-FH in.
 Main Hole Size 7 7/8 Tool Joint Size 4 1/2 XH in. Surface Choke Size 1 in. Bottom Choke Size 5/8 in.

Blow: 1st Open: WEAK 1/4 INCH BLOW, BUILDING TO 3 INCHES
 2nd Open: VERY WEAK SURFACE BLOW, BUILDING TO 2 1/2

Recovered 5 ft. of SMCO, 93% OIL, 7% MUD, GRAVITY: 39
 Recovered 115 ft. of SOCM, 8% OIL, 92% MUD
 Recovered 120 ft. of TOTAL FLUID
 Recovered _____ ft. of _____
 Recovered _____ ft. of _____
 Recovered _____ ft. of _____
 Remarks: _____



TOOL SAMPLE: 4% OIL, 96% MUD

Time Set Packer(s) 9:29 PM A.M. P.M. Time Started Off Bottom 12:29 AM A.M. P.M. Maximum Temperature 96 deg.

Initial Hydrostatic Pressure..... (A) 1488 P.S.I.
 Initial Flow Period..... Minutes 30 (B) 9 P.S.I. to (C) 40 P.S.I.
 Initial Closed In Period..... Minutes 45 (D) 786 P.S.I.
 Final Flow Period..... Minutes 45 (E) 45 P.S.I. to (F) 60 P.S.I.
 Final Closed In Period..... Minutes 60 (G) 709 P.S.I.
 Final Hydrostatic Pressure..... (H) 1481 P.S.I.



DST #4.jpg
DIAMOND TESTING
 P.O. Box 157
 HOISINGTON, KANSAS 67544
 (800) 542-7313
DRILL-STEM TEST TICKET
 FILE: APPLE1-6DST4

TIME ON: 11:07

TIME OFF: 17:39

Company L.D. DRILLING, INC. Lease & Well No. APPLE #1-6

Contractor SKYTOP DRILLING RIG #1 Charge to L.D. DRILLING, INC.

Elevation 1933 KB Formation LANSING "F-G" Effective Pay _____ Ft. Ticket No. T365

Date 7-3-14 Sec. 6 Twp. _____ 6 S Range _____ 17 W County ROOKS State KANSAS

Test Approved By KEITH REAVIS Diamond Representative TIMOTHY T. VENTERS

Formation Test No. 4 Interval Tested from 3172 ft. to 3214 ft. Total Depth 3214 ft.

Packer Depth 3167 ft. Size 6 3/4 in. Packer depth _____ ft. Size 6 3/4 in.

Packer Depth 3172 ft. Size 6 3/4 in. Packer depth _____ ft. Size 6 3/4 in.

Depth of Selective Zone Set _____

Top Recorder Depth (Inside) _____ 3158 ft. Recorder Number _____ 8457 Cap. _____ 10,000 P.S.I.

Bottom Recorder Depth (Outside) _____ 3211 ft. Recorder Number _____ 11029 Cap. _____ 5,025 P.S.I.

Below Straddle Recorder Depth _____ ft. Recorder Number _____ Cap. _____ P.S.I.

Mud Type CHEMICAL Viscosity 50 Drill Collar Length 144 ft. I.D. 2 1/4 in.

Weight 9.1 Water Loss 6.0 cc. Weight Pipe Length 0 ft. I.D. 2 7/8 in.

Chlorides 900 P.P.M. Drill Pipe Length 3000 ft. I.D. 3 1/2 in.

Jars: Make STERLING Serial Number STY. JT. Test Tool Length 28 ft. Tool Size 3 1/2-IF in.

Did Well Flow? NO Reversed Out NO Anchor Length 42 ft. Size 4 1/2-FH in.

Main Hole Size 7 7/8 Tool Joint Size 4 1/2 XH in. Surface Choke Size 1 in. Bottom Choke Size 5/8 in.

Blow: 1st Open: WEAK SURFACE BLOW THROUGHOUT PERIOD.

(NO BB)

2nd Open: VERY WEAK SURFACE BLOW, LASTING 1 1/2 MIN.

Recovered 5 ft. of VSOCM, 1% OIL, 99% MUD

Recovered _____ ft. of _____

Recovered _____ ft. of _____

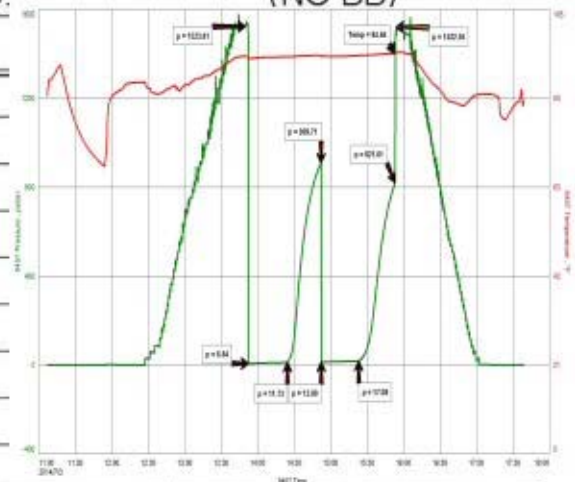
Recovered _____ ft. of _____

Recovered _____ ft. of _____

Recovered _____ ft. of _____

Remarks: _____

TOOL SAMPLE: 5% OIL, 95% MUD



Time Set Packer(s) 1:51 PM A.M. P.M. Time Started Off Bottom 3:51 PM A.M. P.M. Maximum Temperature 95 deg.

Initial Hydrostatic Pressure..... (A) 1524 P.S.I.

Initial Flow Period..... Minutes 30 (B) 7 P.S.I. to (C) 12 P.S.I.

Initial Closed In Period..... Minutes 30 (D) 910 P.S.I.

Final Flow Period..... Minutes 30 (E) 13 P.S.I. to (F) 17 P.S.I.

Final Closed In Period..... Minutes 30 (G) 822 P.S.I.

Final Hydrostatic Pressure..... (H) 1523 P.S.I.



DST #5.jpg
DIAMOND TESTING
 P.O. Box 157
HOISINGTON, KANSAS 67544
 (800) 542-7313
DRILL-STEM TEST TICKET
 FILE: APPLE1-6DST5

TIME ON: 04:23
 TIME OFF: 12:13

Company L.D. DRILLING, INC. Lease & Well No. APPLE #1-6
 Contractor SKYTOP DRILLING RIG #1 Charge to L.D. DRILLING, INC.
 Elevation 1933 KB Formation LANSING "H-I" Effective Pay _____ Ft. Ticket No. T366
 Date 7-4-14 Sec. 6 Twp. 6 S Range 17 W County ROOKS State KANSAS
 Test Approved By KEITH REAVIS Diamond Representative TIMOTHY T. VENTERS

Formation Test No. 5 Interval Tested from 3220 ft. to 3290 ft. Total Depth 3290 ft.
 Packer Depth 3215 ft. Size 6 3/4 in. Packer depth _____ ft. Size 6 3/4 in.
 Packer Depth 3220 ft. Size 6 3/4 in. Packer depth _____ ft. Size 6 3/4 in.

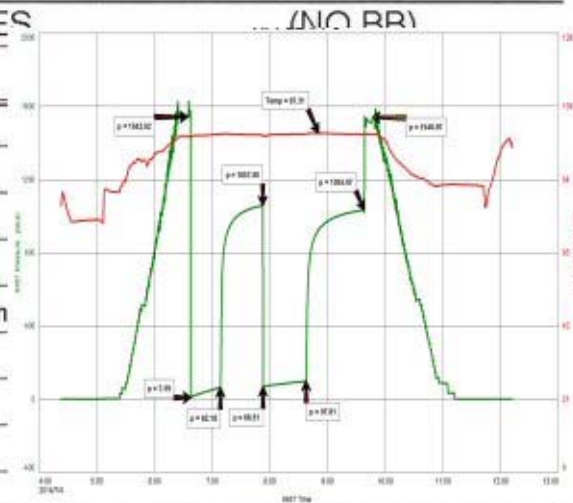
Depth of Selective Zone Set

Top Recorder Depth (Inside) 3206 ft. Recorder Number 8457 Cap. 10,000 P.S.I.
 Bottom Recorder Depth (Outside) 3287 ft. Recorder Number 11029 Cap. 5,025 P.S.I.
 Below Straddle Recorder Depth _____ ft. Recorder Number _____ Cap. _____ P.S.I.

Mud Type CHEMICAL Viscosity 50 Drill Collar Length 144 ft. I.D. 2 1/4 in.
 Weight 9.1 Water Loss 6.0 cc. Weight Pipe Length 0 ft. I.D. 2 7/8 in.
 Chlorides 900 P.P.M. Drill Pipe Length 3048 ft. I.D. 3 1/2 in.
 Jars: Make STERLING Serial Number STY. JT. Test Tool Length 28 ft. Tool Size 3 1/2-IF in.
 Did Well Flow? NO Reversed Out NO Anchor Length 40 ft. Size 4 1/2-FH in.
 Main Hole Size 7 7/8 Tool Joint Size 4 1/2 XH in. Surface Choke Size 1 in. Bottom Choke Size 5/8 in.

Blow: 1st Open: WEAK SURFACE BLOW, BUILDING TO 4 INCHES
2nd Open: WEAK SURFACE BLOW, BUILDING TO 6 INCHES.

Recovered 70 ft. of VSOHMCW, 1% OIL, 58% WATER, 41% MUD
 Recovered 120 ft. of VSOWCM, 2% OIL, 36% WATER, 62% MUD
 Recovered 190 ft. of TOTAL FLUID
 Recovered _____ ft. of _____
 Recovered _____ ft. of CHLORIDES: 35,000 ppm
 Recovered _____ ft. of PH: 7.0
 Remarks: RW: .22 @ 76 deg.



TOOL SAMPLE: TRACE OIL, 74% WATER, 26% MUD

Time Set Packer(s) 6:37 AM A.M. P.M. Time Started Off Bottom 9:37 AM A.M. P.M. Maximum Temperature 97 deg.
 Initial Hydrostatic Pressure..... (A) 1542 P.S.I.
 Initial Flow Period..... Minutes 30 (B) 8 P.S.I. to (C) 62 P.S.I.
 Initial Closed In Period..... Minutes 45 (D) 1058 P.S.I.
 Final Flow Period..... Minutes 45 (E) 67 P.S.I. to (F) 78 P.S.I.
 Final Closed In Period..... Minutes 60 (G) 1034 P.S.I.
 Final Hydrostatic Pressure..... (H) 1541 P.S.I.