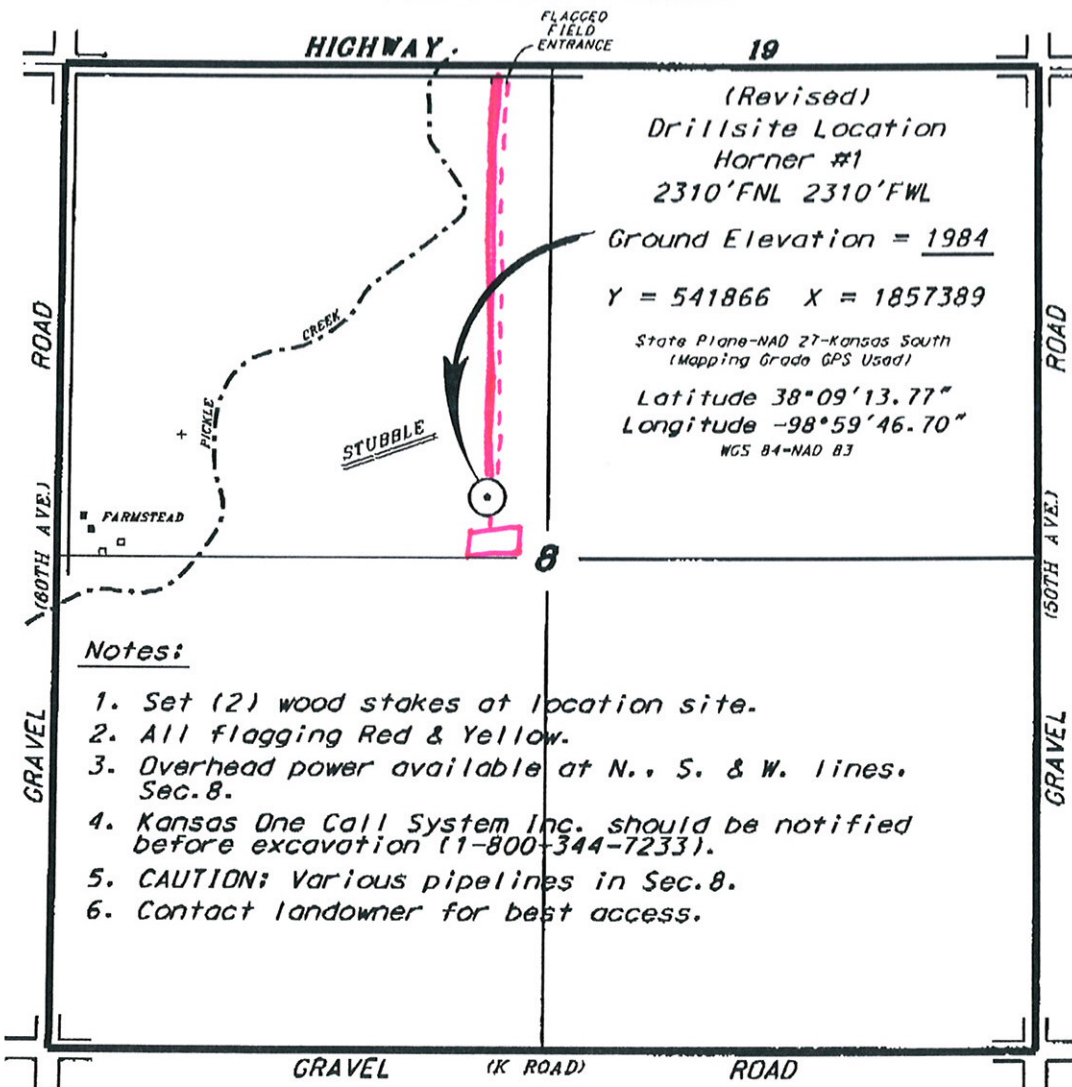


**H & B PETROLEUM CORPORATION
HORNER LEASE
NW. 1/4, SECTION 8, T22S, R15W
PAWNEE COUNTY, KANSAS**

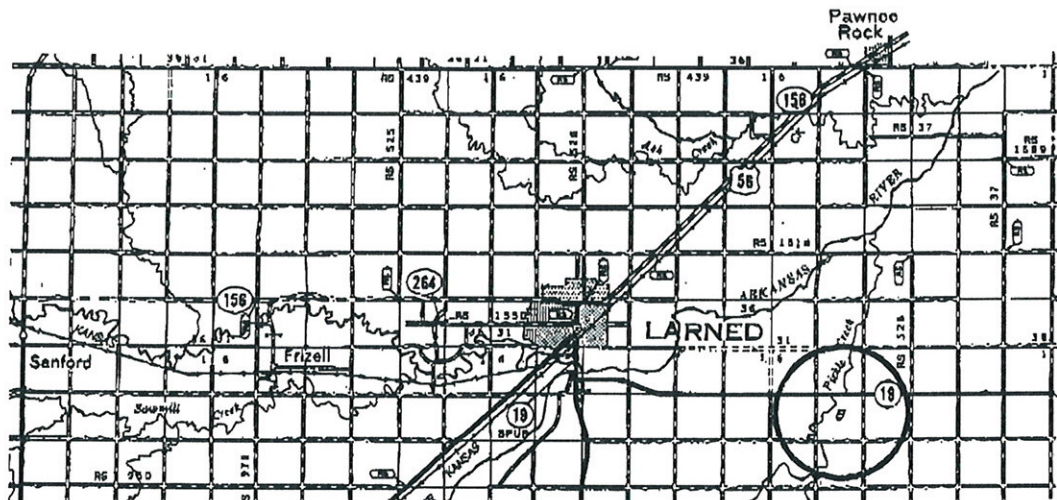


(Revised)
Drillsite Location
Horner #1
2310'FNL 2310'FWL
Ground Elevation = 1984
Y = 541866 X = 1857389
State Plane-NAD 27-Kansas South
(Mapping Grade GPS Used)
Latitude 38°09'13.77"
Longitude -98°59'46.70"
NAD 83

Notes:

1. Set (2) wood stakes at location site.
2. All flagging Red & Yellow.
3. Overhead power available at N., S. & W. lines, Sec. 8.
4. Kansas One Call System Inc. should be notified before excavation (1-800-344-7233).
5. CAUTION: Various pipelines in Sec. 8.
6. Contact landowner for best access.

*Ingress and egress to location as shown on this plat is for public use only and may not be legally opened for public use. Contact landowner, tenant and county road department for access.



Controlling data is based upon the best maps and photographs available to us and upon a regular section of land containing 640 acres.
Approximate section lines were determined using the normal standards of care of oilfield surveyors practicing in the state of Kansas. The section corners, which establish the precise section lines, were not necessarily located, and the exact location of the drillsite location in the section is not guaranteed. Therefore, the operator securing this service and accepting this plat and all other parties relying thereon agree to hold Central Kansas Drilling Services, Inc., its officers and employees harmless from all losses, costs and expenses and said entities released from any liability from incidental or consequential damages.
Elevations derived from National Geospatial Vertical Datum.

Date August 28, 2014