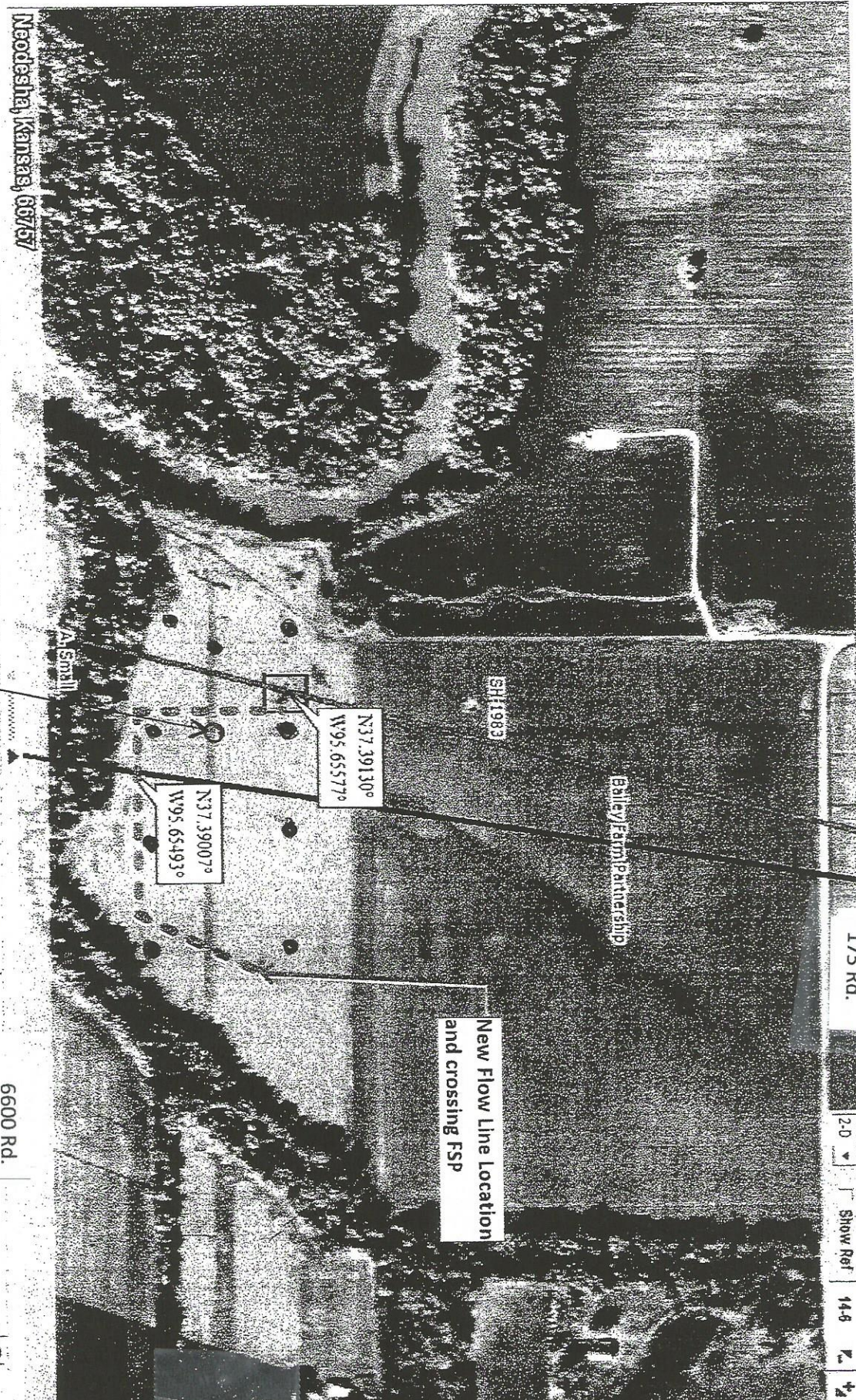


Neodesha, Kansas, 66767

- Map Data
- GIS
- Print
- Find
- Phone
- Info
- NetLink
- ImageReq
- Draw
- Profile
- 3-D
- Route
- GPS
- Voice
- Handheld Export

existing wells

proposed well



175 Rd.

New Flow Line Location and crossing FSP

N37.39130°
W95.65577°

N37.39007°
W95.65493°

6600 Rd.

Reno Rd.

0 ft

2.0

Show Ref

14.8

1/4



DATA

LAROU

N37.3

Long

W95.6

EWYH

7941C