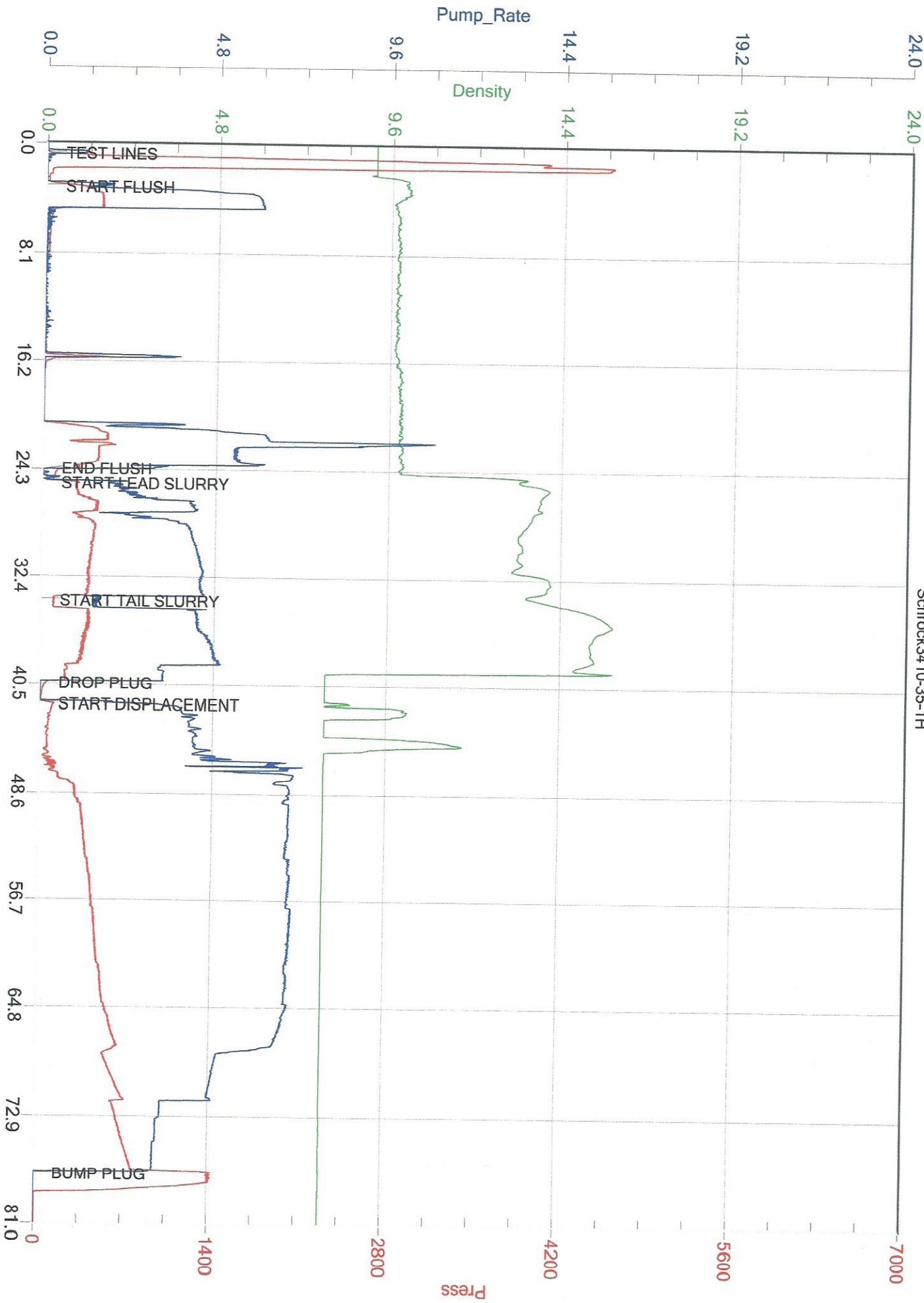


Tapstone
Schrock34 10-35-1H



Date 8-20-14 District ML. 22 Ticket No. 63034
 Company Seaton Energy Rig No Mac 27
 Lease Schrock Well No. 3400-35-1H
 County Barker State Ks
 Location Hazelton Ks, 15, 1E, 2S Field 36-34-9
1/2E, S1N

CEMENT DATA:
 Spacer Type: Super Flush
 Amt. _____ Sks Yield _____ ft³/sk Density _____ PPG

CASING DATA: Conductor PTA Squeeze Misc
 Surface Intermediate Production Liner
 Size 7 Type _____ Weight 26# Collar _____

LEAD: Pump Time _____ hrs. Type Class "A" 50:50+
2% Gel + .4% FI-160 + 1% C-51 Excess _____
 Amt. 130 Sks Yield 1.40 ft³/sk Density 13.6 PPG
 TAIL: Pump Time _____ hrs. Type Class "A" + .8%
FI-160 + 1% C-51 Excess _____
 Amt. 90 Sks Yield 1.18 ft³/sk Density 15.6 PPG
 WATER: Lead 6.75 gals/sk Tail 5.17 gals/sk Total _____ Bbls.

Casing Depths: Top _____ Bottom 5234

Pump Trucks Used 545-548
 Bulk Equip. 819/823

Drill Pipe: Size _____ Weight _____ Collars _____
 Open Hole: Size 8 3/4 T.D. 5237 ft. P.B. to _____ ft.

CAPACITY FACTORS:
 Casing: Bbls/Lin. ft. _____ Lin. ft./Bbl. _____
 Open Holes: Bbls/Lin. ft. _____ Lin. ft./Bbl. _____
 Drill Pipe: Bbls/Lin. ft. _____ Lin. ft./Bbl. _____
 Annulus: Bbls/Lin. ft. _____ Lin. ft./Bbl. _____
 Perforations: From _____ ft. to _____ ft. Amt. _____

Float Equip: Manufacturer _____
 Shoe: Type _____ Depth _____
 Float: Type _____ Depth _____
 Centralizers: Quantity _____ Plugs Top _____ Btm. _____
 Stage Collars _____
 Special Equip. _____
 Disp. Fluid Type Fresh H2O Amt. _____ Bbls. Weight 8.34 PPG
 Mud Type _____ Weight _____ PPG

COMPANY REPRESENTATIVE Shyann Gray

CEMENTER Jason Thimesch

TIME	PRESSURES PSI		FLUID PUMPED DATA			REMARKS
	AM/PM	DRILL PIPE CASING	ANNULUS	TOTAL FLUID	Pumped Per Time Period	
9:00 AM						On loc, safety meeting, spotting, safety meeting, rig up, safety meeting, running casing
1:00 AM		5000		24 BBL	24	Pres test fix leak on sub
1:20 AM		400		20 BBL	6	Pump spacer/bottom plug TOJ 2679
1:28 AM		400		32 1/2 BBL	4	Mix & pump 1st cement slurry TOC 3425
1:37 AM		350		19 BBL	4	Mix & pump 2nd cement slurry TOC 4637
1:42 AM						Shut down Release plug
1:47 AM		200			7	Start Displacement
		300		40 BBL	7	
		400		60 BBL	7	
		500		110 BBL	7	
		600		140 BBL	7	
		550		150 BBL	5	
		650		170 BBL	3 1/2	Slow to Bump
		800		180 BBL	3	
2:22 AM		1400		188 BBL	0	Bump Plug

ALLIED OIL & GAS SERVICES, LLC 063034

Federal Tax I.D. # 20-8651475

REMIT TO P.O. BOX 93999
SOUTHLAKE, TEXAS 76092

SERVICE POINT:
Medicine Lodge KS
8/21/14

DATE <i>8/20/14</i>	SEC. <i>36</i>	TWP. <i>34</i>	RANGE <i>9</i>	CALLED OUT <i>4:00PM</i>	ON LOCATION <i>9:00PM</i>	JOB START <i>10:00AM</i>	JOB FINISH <i>2:30AM</i>
LEASE <i>Schrock</i>		WELL # <i>3410-25-111</i>		LOCATION <i>Hazleton KS, 1 south, 1 East, 2 South,</i>		COUNTY <i>Barber</i>	STATE <i>KS</i>
OLD OR NEW (Circle one)			<i>1/2 East South into</i>				

CONTRACTOR *Nomac # 7*
 TYPE OF JOB *Intermediate*
 HOLE SIZE *8 1/2* T.D. *5237*
 CASING SIZE *7* DEPTH *5234*
 TUBING SIZE DEPTH
 DRILL PIPE DEPTH
 TOOL DEPTH
 PRES. MAX *1406* MINIMUM
 MEAS. LINE SHOE JOINT *83'*
 CEMENT LEFT IN CSG. *83'*
 PERFS.
 DISPLACEMENT *128 BBLs Fresh H₂O*

OWNER *Tapstone Energy*
 CEMENT
 AMOUNT ORDERED *130 cu 50:50 Class A Pozx
 2% Gel + 4% FL-160 + 1% C-51, 90 cu Class A +
 .8% FL-160 + 2% CD-31, 20 BBL Super Flush*
 COMMON @
 POZMIX @
 GEL @
 CHLORIDE *130 @ 92*
 ASC @

EQUIPMENT

PUMP TRUCK CEMENTER *Jason Thimesch*
 # *548/545* HELPER *Ron Gilley*
 BULK TRUCK
 # *819/823* DRIVER *Joe Holcomb*
 BULK TRUCK
 # DRIVER

DC @ 4012
Schrock 3410
Nomac 7
830.37
 HANDLING @
 MILEAGE *8541.55*

REMARKS:

TOTAL
Shuppen Beans
SERVICE
8/24/14

DEPTH OF JOB *5234*
 PUMP TRUCK CHARGE
 EXTRA FOOTAGE @
 MILEAGE @
 MANIFOLD @
 @
 @

CHARGE TO: *Tapstone Energy*
 STREET _____
 CITY _____ STATE _____ ZIP _____

TOTAL _____

PLUG & FLOAT EQUIPMENT

 @
 @
 @
 @
 @

To: Allied Oil & Gas Services, LLC.
 You are hereby requested to rent cementing equipment
 and furnish cementer and helper(s) to assist owner or
 contractor to do work as is listed. The