



**GAMMA RAY  
NEUTRON  
CEMENT BOND  
COMPLETION LOG**

Company DAYSTAR PETROLEUM, INC.  
Well TOOT # 8  
Field EASTON NORTHEAST  
County LEAVENWORTH  
State KANSAS

Company DAYSTAR PETROLEUM, INC.  
Well TOOT # 8  
Field EASTON NORTHEAST  
County LEAVENWORTH State KANSAS

Location: API # : 15-103-21415-00-00  
2465' FSL & 630' FWL  
NE-NW-NW-SW  
SEC 9 TWP 8S RGE 21E  
Permanent Datum GL Elevation 1077EST  
Log Measured From GL K.B.  
Drilling Measured From GL D.F.  
G.L. 1077EST.

Date	7-7-14		
Run Number	1 NW		
Depth Driller	1602'		
Depth Logger	1594.8'		
Top Log Interval	0		
Bottom Logged Interval	1594.8'		
Fluid Level	FULL		
Type Fluid	WATER		
Production Casing	5.5" @ TD	@	@
Max. Recorded Temp.			
Estimated Cement Top			
Calculated Cement Top			
Amount & Type Cement			
Amount & Type Admix			
Drilling Contractor			
Equipment Number	103		
Location			
Recorded By	SOLOMON,B.		
Witnessed By	WESCOTT, J.		

<<< Fold Here >>>

All interpretations are opinions based on inferences from electrical or other measurements and we cannot and do not guarantee the accuracy or correctness of any interpretation, and we shall not, except in the case of gross or willful negligence on our part, be liable or responsible for any loss, costs, damages, or expenses incurred or sustained by anyone resulting from any interpretation made by any of our officers, agents or employees. These interpretations are also subject to our general terms and conditions set out in our current Price Schedule.

**Comments**

THANK YOU

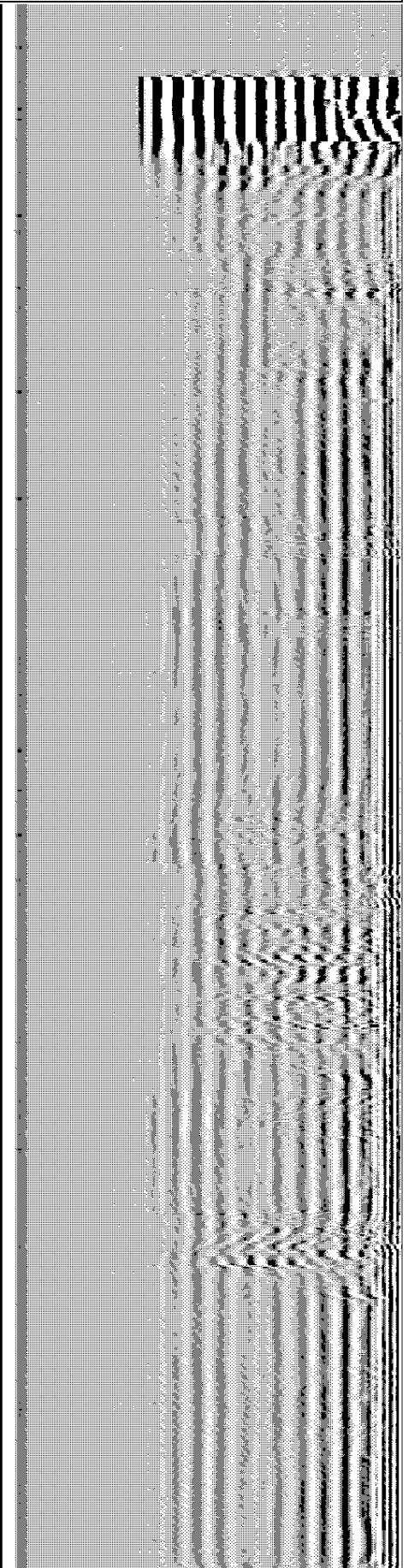
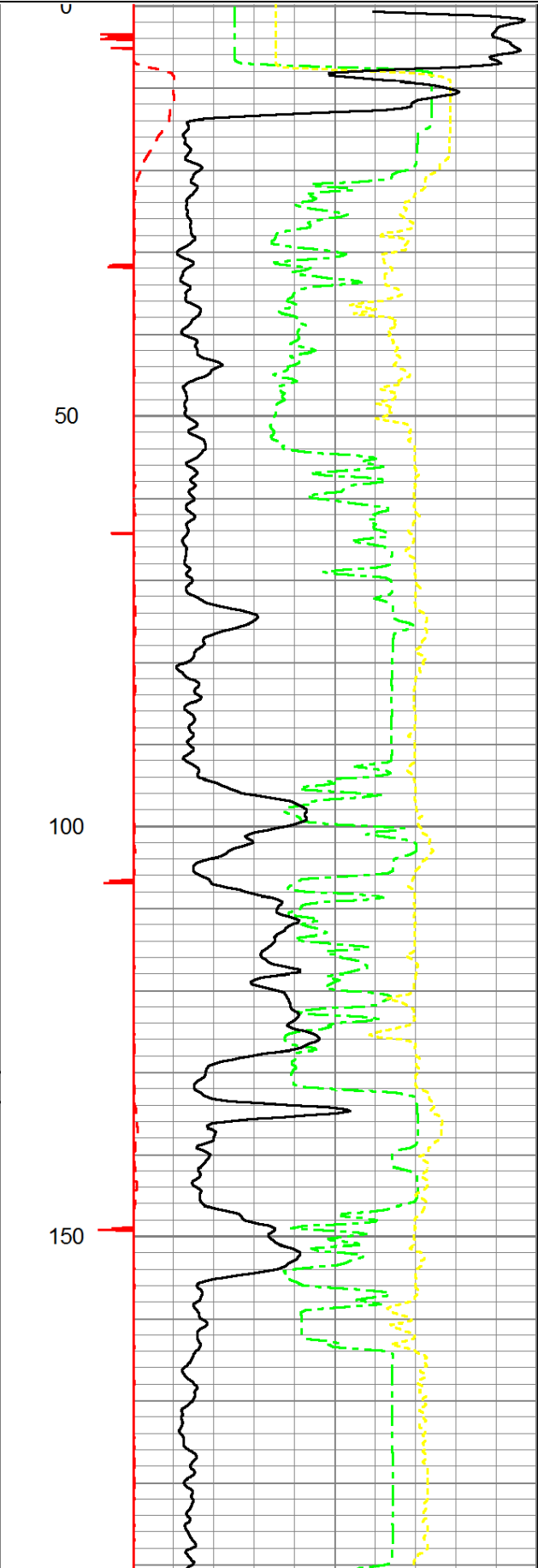
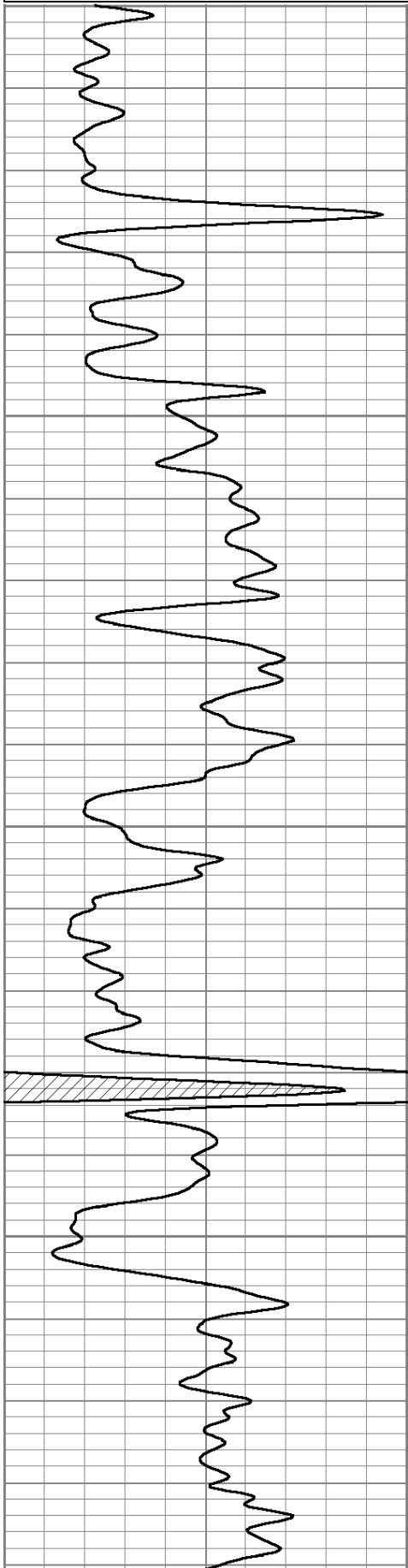
Sensor	Offset (ft)	Schematic	Description	Len (ft)	OD (in)	Wt (lb)
			tekco tekco cent	2.17	1.69	5.00

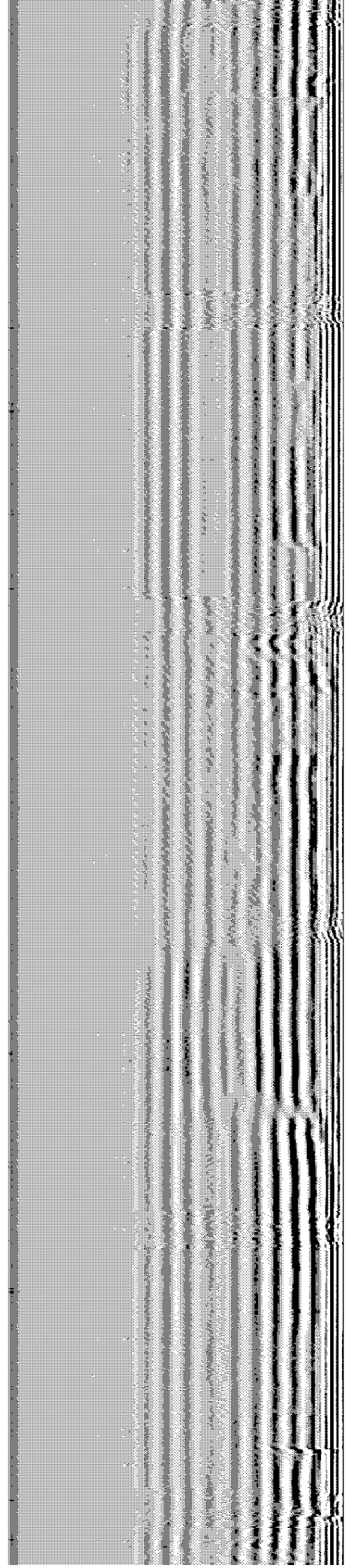
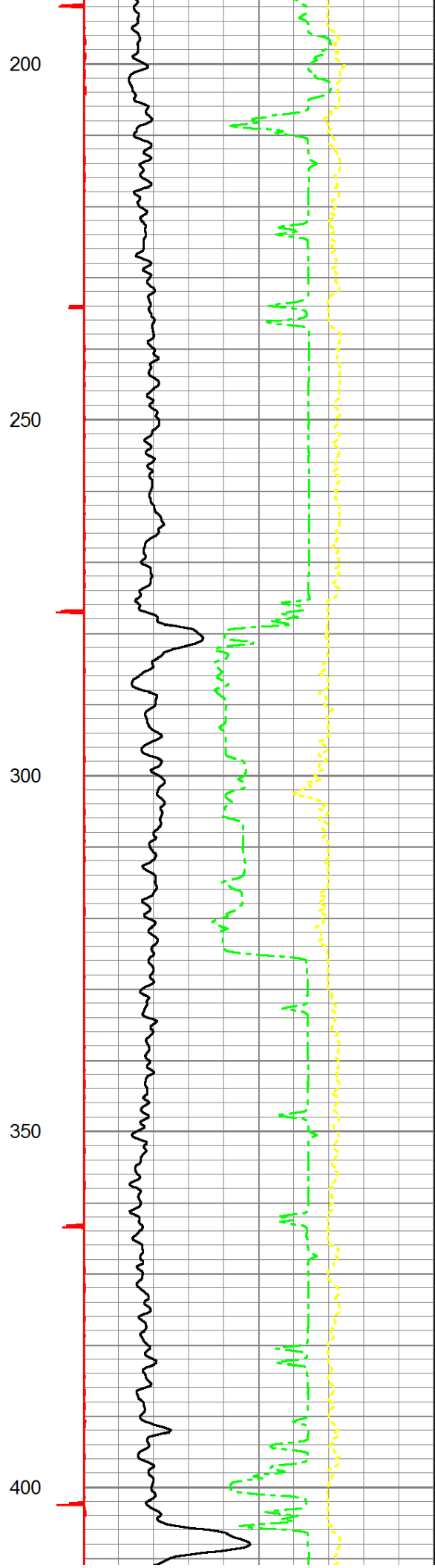
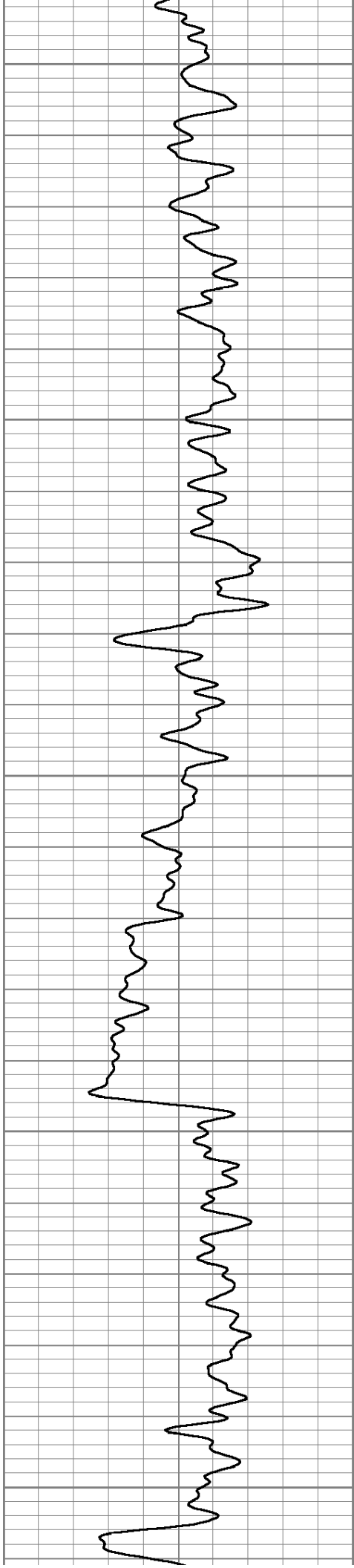
				tekco cent.			
WVF3FT	17.50			CBLTEKCO-TEKCO2RCVR (TEKCO169) 1 11/16" TEKCO 2 RCVR DELWARE	9.75	1.69	50.00
WVF5FT	16.50						
WVFCAL	13.08						
WVFSYNC	13.08			tekco tekco cent.	2.17	1.69	5.00
GR	7.59			GR-TITAN_169 (TIT169_001) Titan 1 11/16" Gamma Ray	4.75	1.69	20.00
CCL	5.05			CCL-TITAN_169 (TIT169) Titan 1 11/16" Logging CCL	1.83	1.69	7.50
NEU	0.63			NEU-TITAN (TIT801) TITAN 1 11/16" Neutron	4.33	1.69	25.00

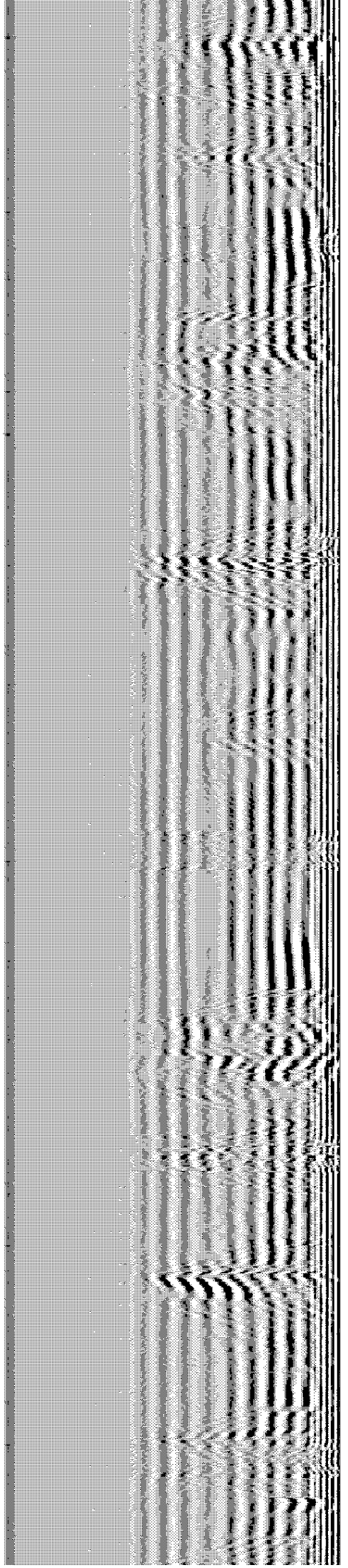
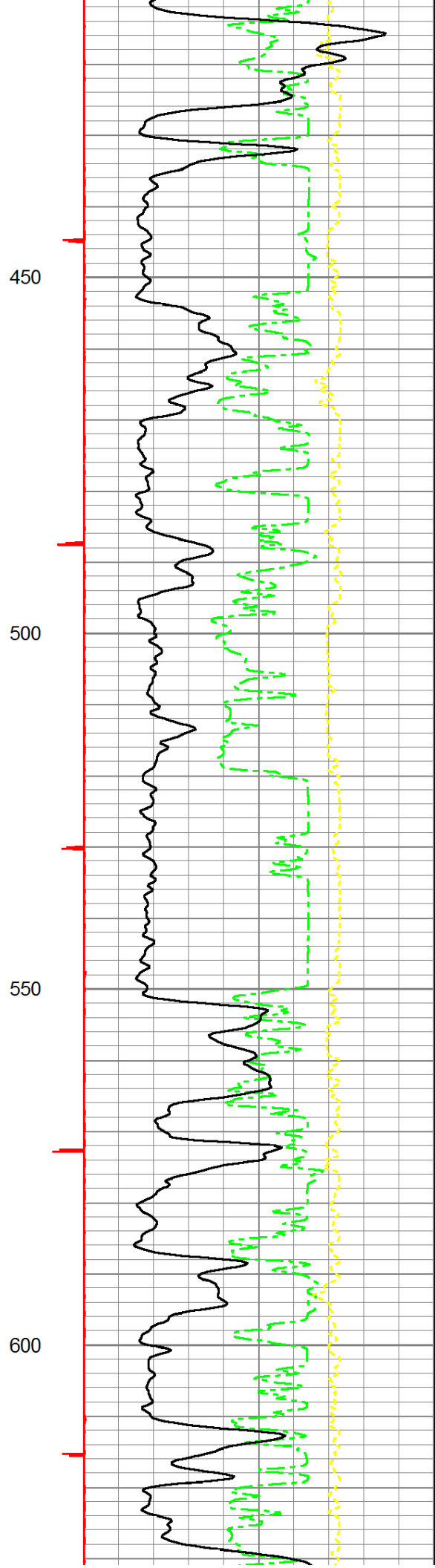
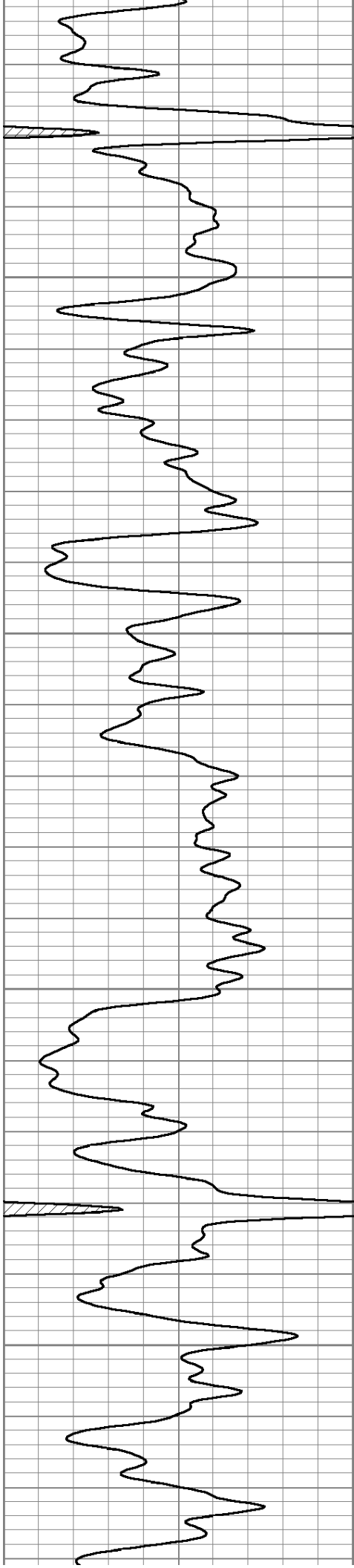
Dataset: toot #8.db: field/well/run1/pass1  
 Total Length: 25.00 ft  
 Total Weight: 112.50 lb  
 O.D.: 1.69 in

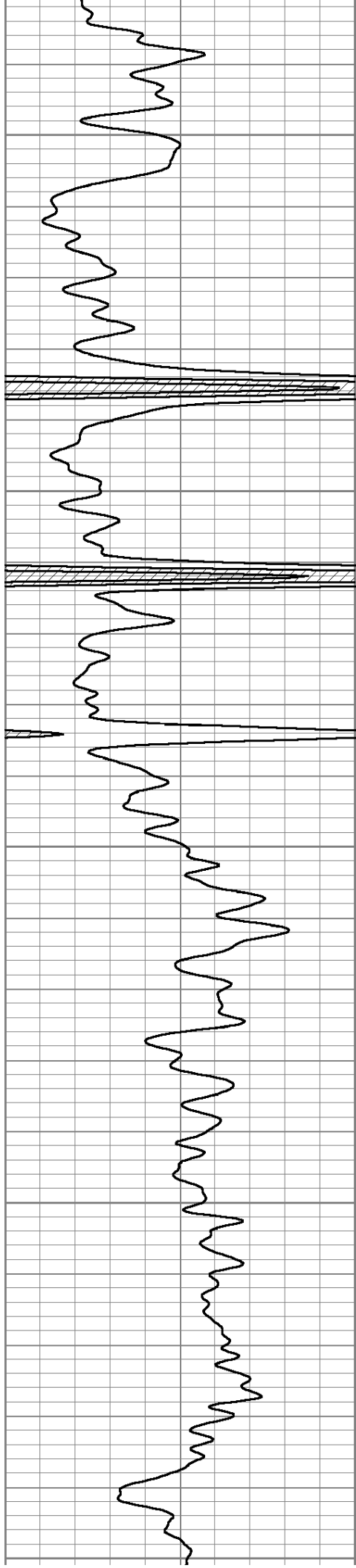
Database File: e:\toot #8.db  
 Dataset Pathname: pass1  
 Presentation Format: scbl\_dr

0	Gamma Ray	150	Collar Locator	0	AMP3FT (mV)	200	200	VDL	1200
150	gr	300	9	0	1100	TT3FT (usec)	200		
					1800	TT5FT (usec)	200		
					100	NEU (cps)	1800		









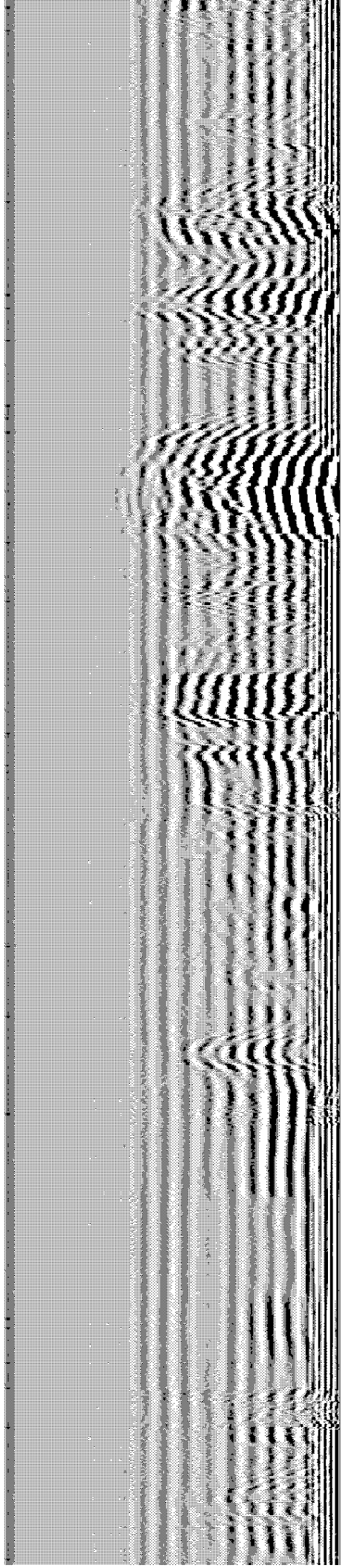
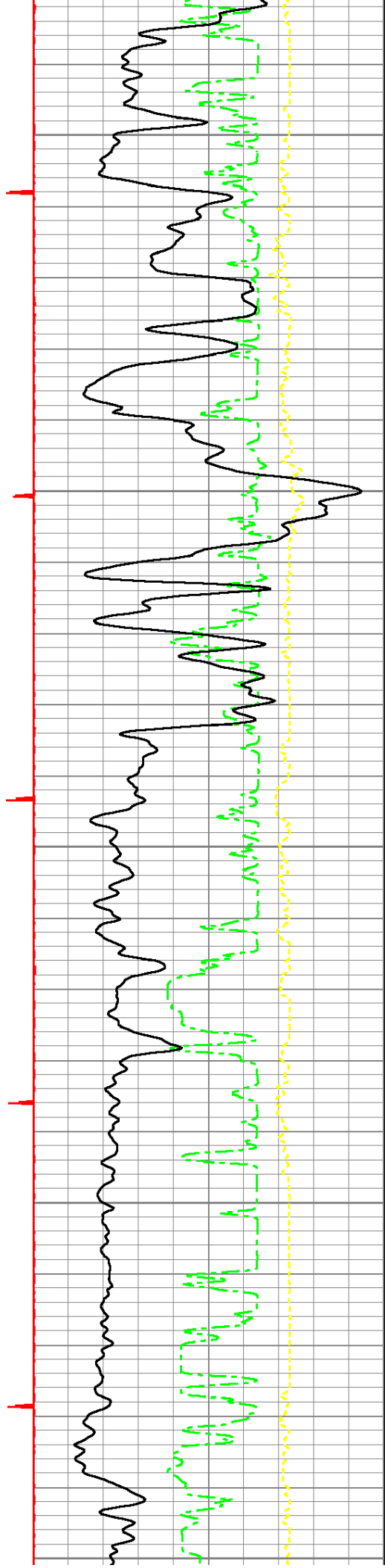
650

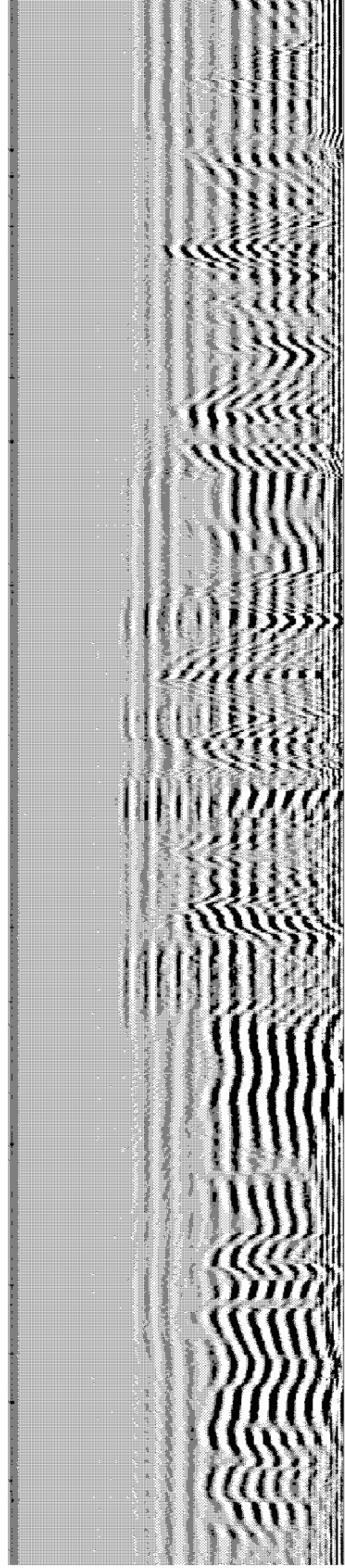
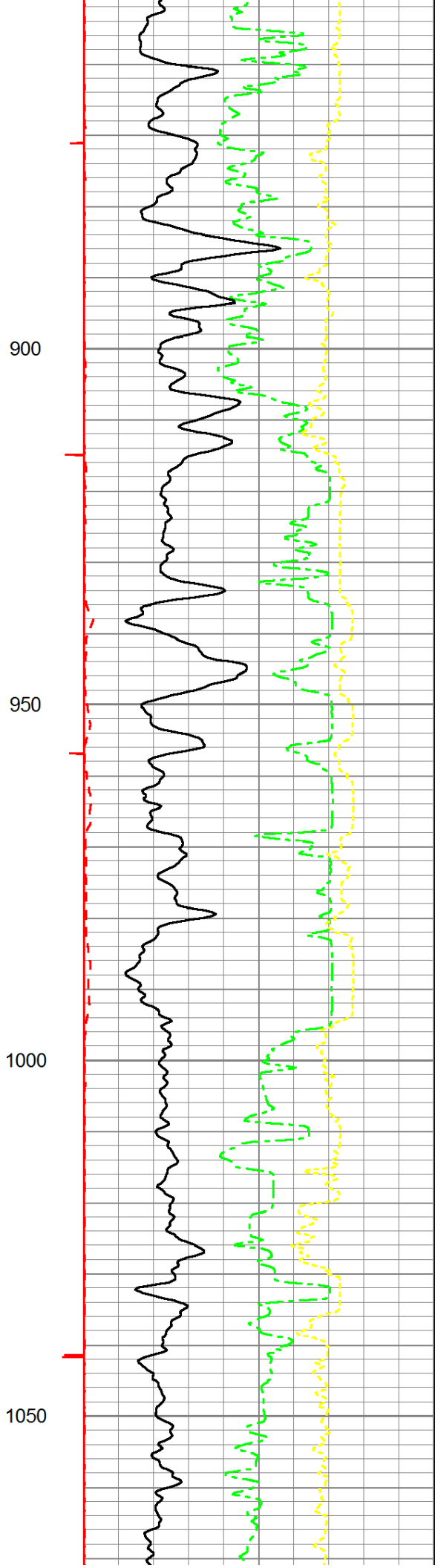
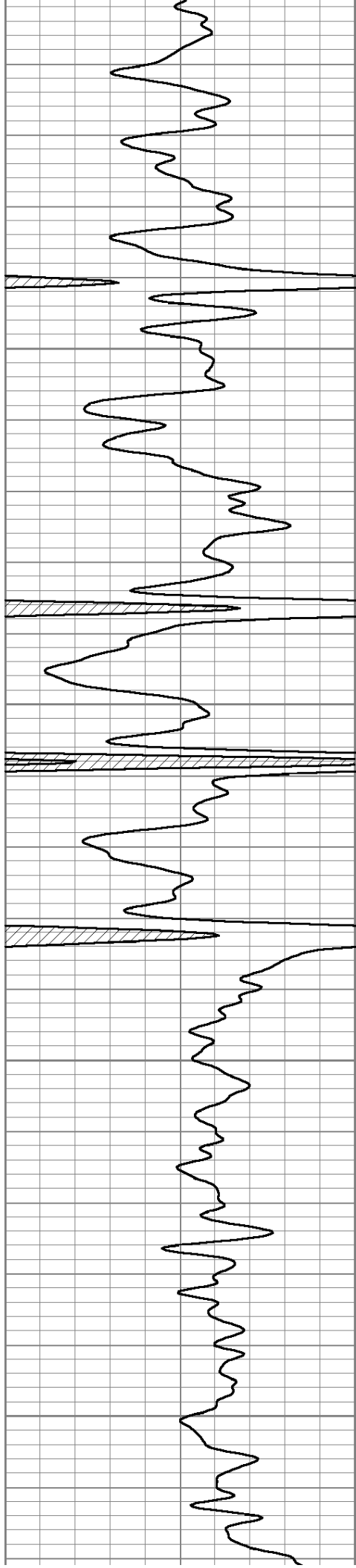
700

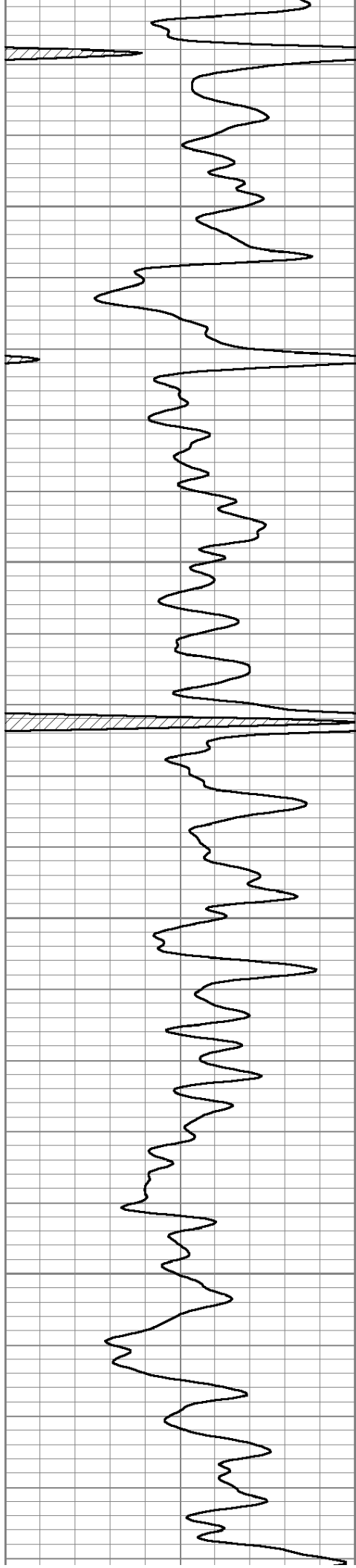
750

800

850





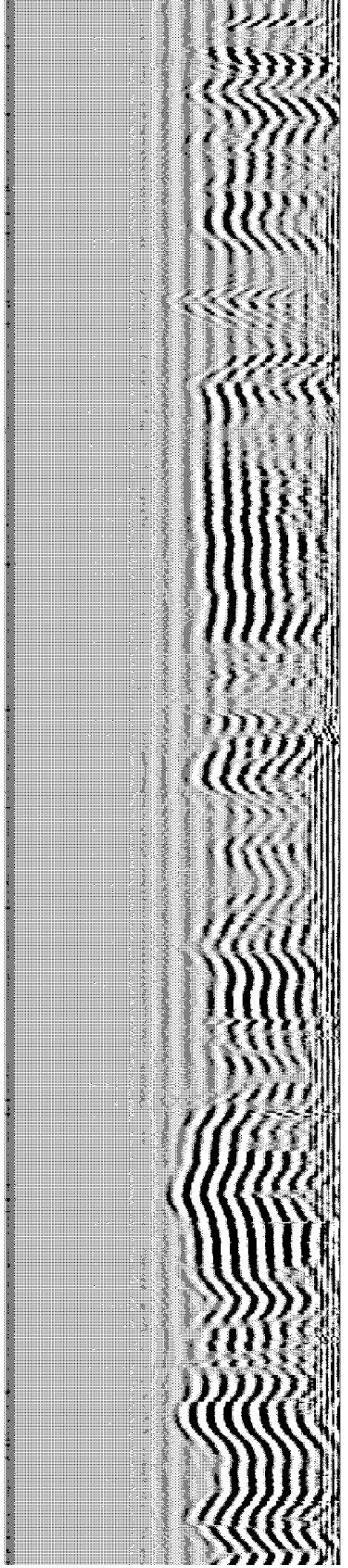
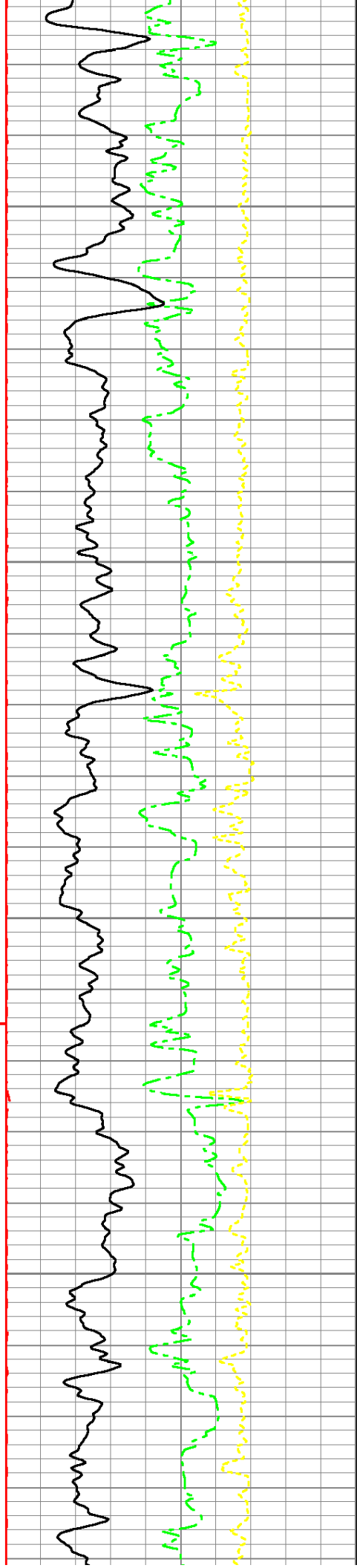


1100

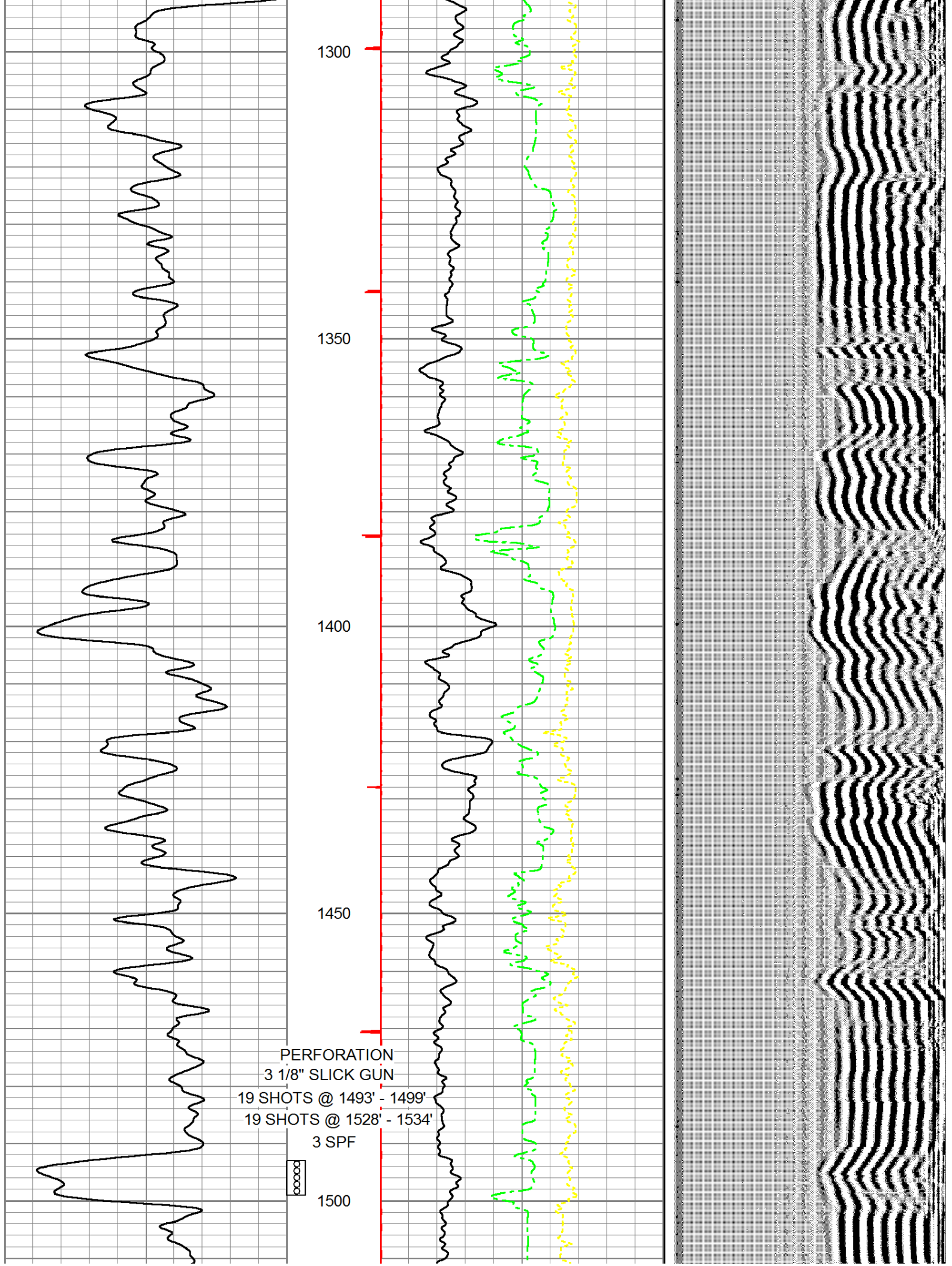
1150

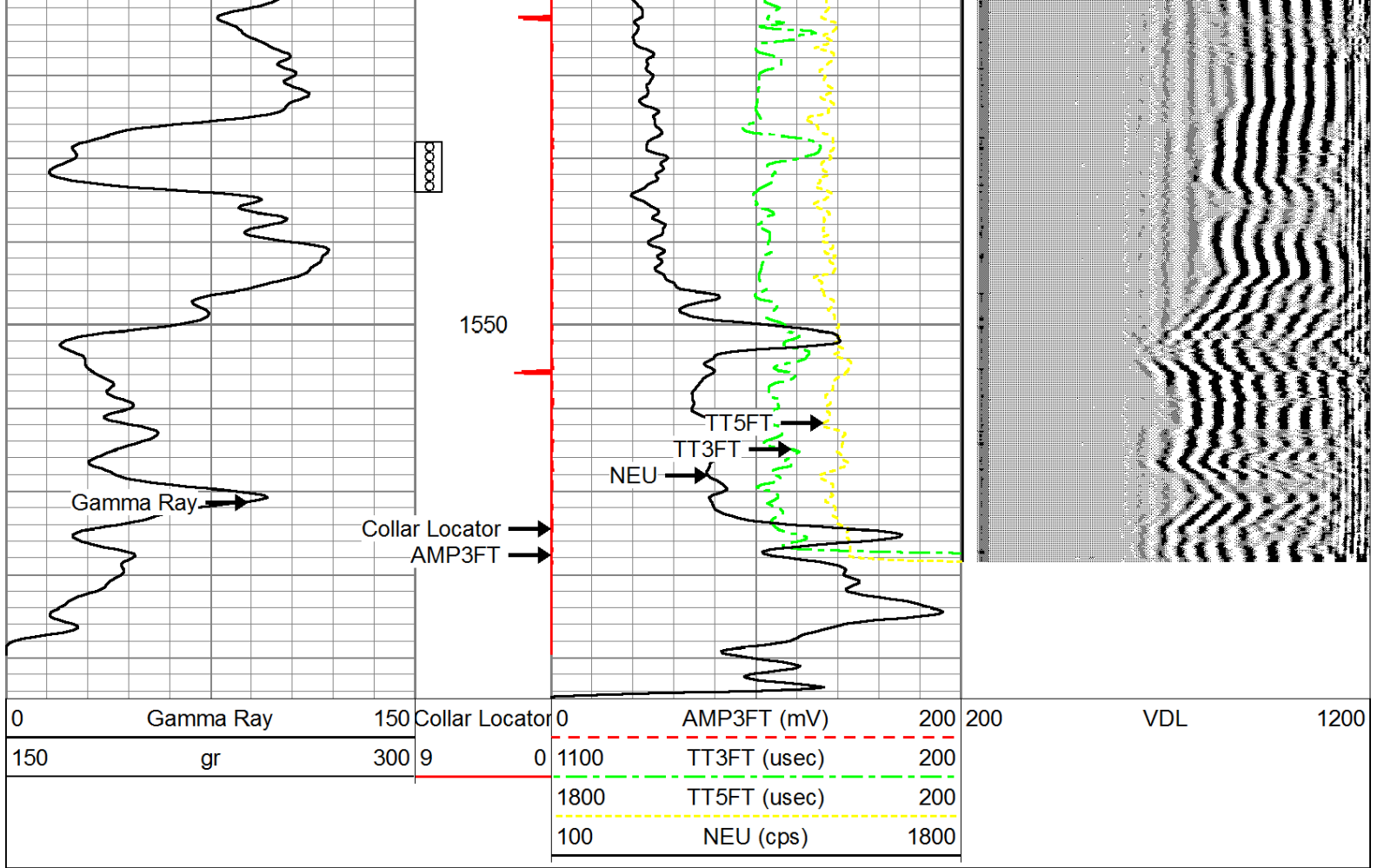
1200

1250









Company DAYSTAR PETROLEUM, INC.  
 Well TOOT # 8  
 Field EASTON NORTHEAST  
 County LEAVENWORTH SEC. 9 TWP. 8S RGE. 21E  
 State KANSAS Date 7-7-14