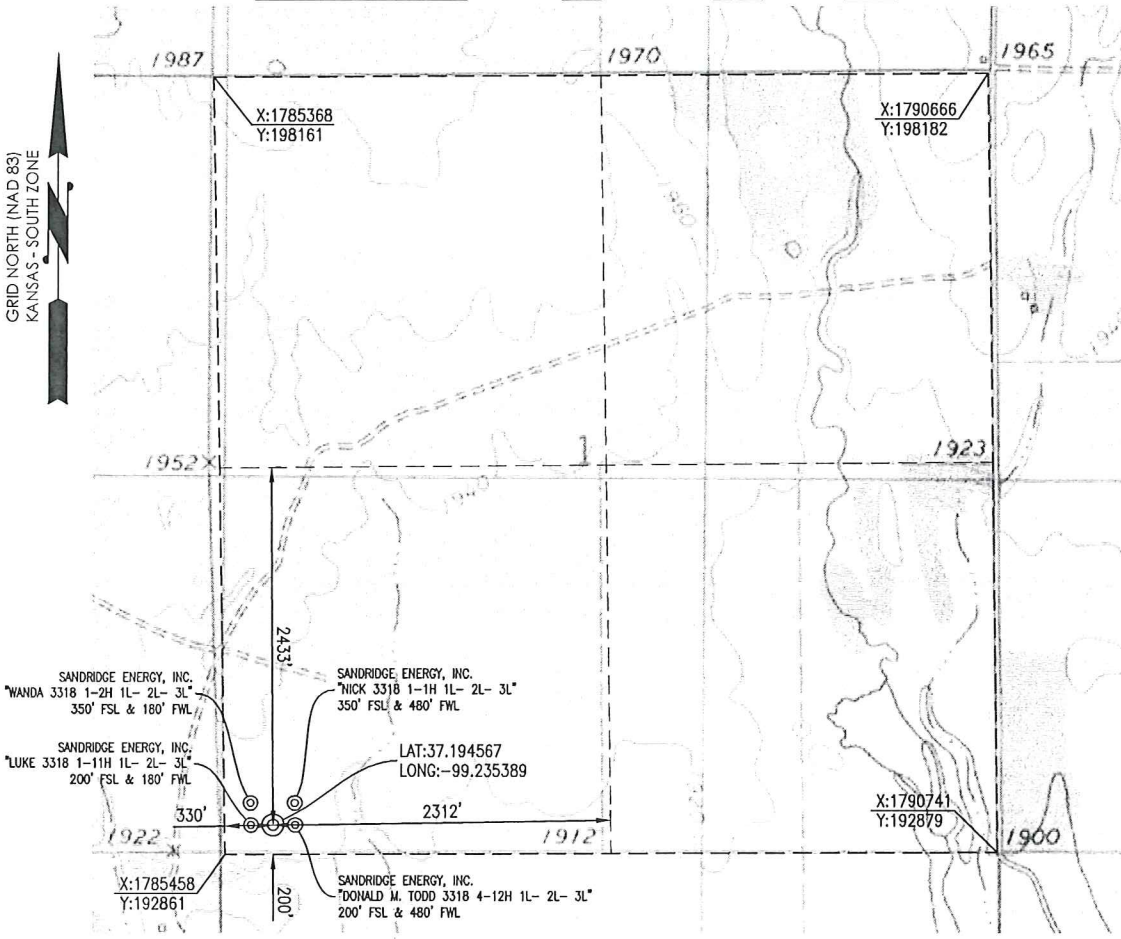


COMANCHE COUNTY, KANSAS
 200' FSL- 330' FWL SECTION 1 TOWNSHIP 33S RANGE 18W 6TH P.M.



OPERATOR: SANDRIDGE ENERGY, INC. WELL NO: 1-1

LEASE NAME: PRATT SWD 3318

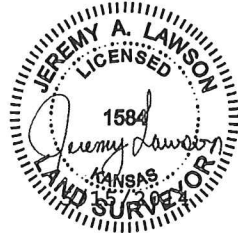
ELEVATION:
 1932' GR. AT STAKE

TOPOGRAPHIC & VEGETATION: LOCATION FELL IN A FIELD

GOOD DRILL SITE: YES REFERENCE STAKES OR ALTERNATE LOCATION STAKES SET: NONE

BEST ACCESSIBILITY TO LOCATION: SOUTH LINE

DISTANCE & DIRECTION
 FROM HWY JCT OR TOWN: FROM THE JCT. OF US-160 & ROAD 19 (±6.0 MILES EAST OF COLDWATER, KS) TRAVEL SOUTH ON ROAD 19 FOR ±6.0 MILES TO THE SOUTHEAST CORNER OF SECTION 1, T33S-R18W.

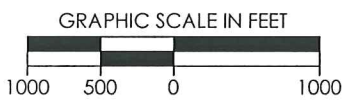



(THE FOLLOWING INFORMATION WAS GATHERED USING A GPS RECEIVER ACCURACY ±2-3 METERS)

GPS DATUM: NAD-27
 LAT: 37.194567
 LONG: -99.235389

STATE PLANE COORDINATES:
 ZONE: KS-SOUTH NAD-27
 X: 1785784.9
 Y: 193062.6

GENERAL NOTES:
 THE TIES AND FOOTAGES SHOWN ON THIS PLAT ARE FROM LINES OF OCCUPATION FROM A SURVEY MADE ON THE GROUND AND / OR BEARING AND DISTANCES FROM THE GENERAL LAND OFFICE PLAT OF THE AREA SHOWN AND MAY NOT BE THE ACTUAL PROPERTY CORNERS. THIS PLAT DOES NOT REPRESENT A TRUE BOUNDARY SURVEY. DRILL SITE CONDITION DETERMINATIONS WERE MADE BY SANDRIDGE ENERGY INC. REPRESENTATIVES.



REVISION		 "PRATT SWD 3318 1-1" PART OF THE SW1/4 OF SECTION 1, T-33-S, R-18-W PROPOSED DRILL SITE COMANCHE COUNTY, KANSAS	
△	MOVED SHL (05-14-2014)		
SCALE: 1" = 1000'		PLOT DATE: 05-15-2014	DRAWN BY: MF
		SHEET NO.: 1 OF 3	