

OPERATOR

Company: CARRIE EXPLORATION AND DEVELOPMENT
 Address: 210 WEST 22ND
 HAYS, KANSAS 67601

Contact Geologist: RONALD HEROLD
 Contact Phone Nbr: 913-961-2760
 Well Name: BRYANT C-1
 Location: NW NE SE S12 T19S R11W
 API: 15-009-25974-00-00
 Pool:
 State: KANSAS

Field: RICK
 Country: USA

Scale 1:240 Imperial

Well Name: BRYANT C-1
 Surface Location: NW NE SE S12 T19S R11W
 Bottom Location:
 API: 15-009-25974-00-00
 License Number: 6768
 Spud Date: 7/29/2014 Time: 6:30 PM
 Region: BARTON COUNTY
 Drilling Completed: 8/3/2014 Time: 11:30 AM
 Surface Coordinates: 2970 FNL & 990 FEL
 Bottom Hole Coordinates:
 Ground Elevation: 1773.00ft
 K.B. Elevation: 1782.00ft
 Logged Interval: 2500.00ft To: 3425.00ft
 Total Depth: 3425.00ft
 Formation: ARBUCKLE
 Drilling Fluid Type: CHEMICAL / FRESH WATER GEL

SURFACE CO-ORDINATES

Well Type: Vertical
 Longitude: -98.4837266
 Latitude: 38.4119790
 N/S Co-ord: 2970 FNL
 E/W Co-ord: 990 FEL

LOGGED BY

Company: SOLUTIONS CONSULTING, INC.
 Address: 108 W 35TH
 HAYS, KS 67601

Phone Nbr: (785) 639-1337
 Logged By: GEOLOGIST

Name: STEVE REED / HERB DEINES

CONTRACTOR

Contractor: SOUTHWIND DRILLING, INC.
 Rig #: 2
 Rig Type: MUD ROTARY
 Spud Date: 7/29/2014 Time: 6:30 PM
 TD Date: 8/3/2014 Time: 11:30 AM
 Rig Release: 8/4/2014 Time: 8:45 AM

ELEVATIONS

K.B. Elevation: 1782.00ft Ground Elevation: 1773.00ft
 K.B. to Ground: 9.00ft

NOTES

FOLLOWING LOG ANALYSIS, THE DECISION WAS MADE TO SET 5 1/2" PRODUCTION TO FURTHER TEST

ARBUCKLE AND KANSAS CITY ZONES.

OPEN HOLE LOGGING PROVIDED BY: PIONEER ENERGY SERVICES
DUAL INDUCTION LOG, DUAL COMPENSATED POROSITY LOG, AND MICRORESISTIVITY LOGS WERE PERFORMED

DRILL STEM TESTING PROVIDED BY: TRILOBITE TESTING
TWO (2) CONVENTIONAL DRILL STEM TESTS WERE COMPLETED

LOG TOPS COMPARISONS AND DAILY ACTIVITY SUMMARY

	WELL NAME		COMPARISON WELL	COMPARISON WELL
	BRYANT # C-1		HOFFMAN #1	BRYANT #3
	API: 15-009-25974		API: 15-009-24740	API: 15-009-23570
FORMATION	SAMPLE TOPS	LOG TOPS	LOG TOPS (DATUM)	LOG TOPS (DATUM)
ANHYDRITE TOP	542' (+1242')	532' (+1252')	+1227'	+1246'
TOPEKA	2637' (-855')	2639' (-857')	-848'	NA
HEEBNER	2908' (-1126')	2904' (-1123')	-1111'	-1124'
BROWN LIME	3028' (-1246')	3024' (-1242')	-1231'	-1243'
LKC	3047' (-1265')	3048' (-1266')	-1250'	-1262'
BKC	3304' (-1522')	3303' (-1521')	-1510'	-1537'
ARBUCKLE	3350' (-1568')	3345' (-1563')	-1565'	-1568'
RTD	3425' (-1643')	3422' (-1640')	-1667'	-1612'

SUMMARY OF DAILY ACTIVITY

- 7-29-14** R.U., spud @ 6:30pm, 8 5/8" surface casing set at 256' w/150 sxs Class A, 2% gel, 3% cc
- 7-30-14** 257', WOC, drilling
- 7-31-14** 1846', drilling, displaced at 2639'
- 8-1-14** 2760', drilling, CFS @ 3070, short trip (27 stands), CTCH, TOWB for DST #1, survey .5°, strap 1.59 short to board, DST #1 3030 to 3070
- 8-2-14** 3080', drilling, CFS @ 3134, TOWB for DST #2, DST #2 3060 to 3134
- 8-3-14** 3365', drilling, CFS @3368, CFS @ 3373, CFS @ 3378, TD of 3425 reached @ 11:30am, CFS, short trip (12 stands) CTCH, TOWB for logs, survey 1°, logging, prepare to set production casing, 5.5' production casing set at 3424' w/150 sxs of ACS, 2% gel, 5# Kohl.
- 8-4-14** release rig

DST # 1 PRESSURE VS TIME CHART

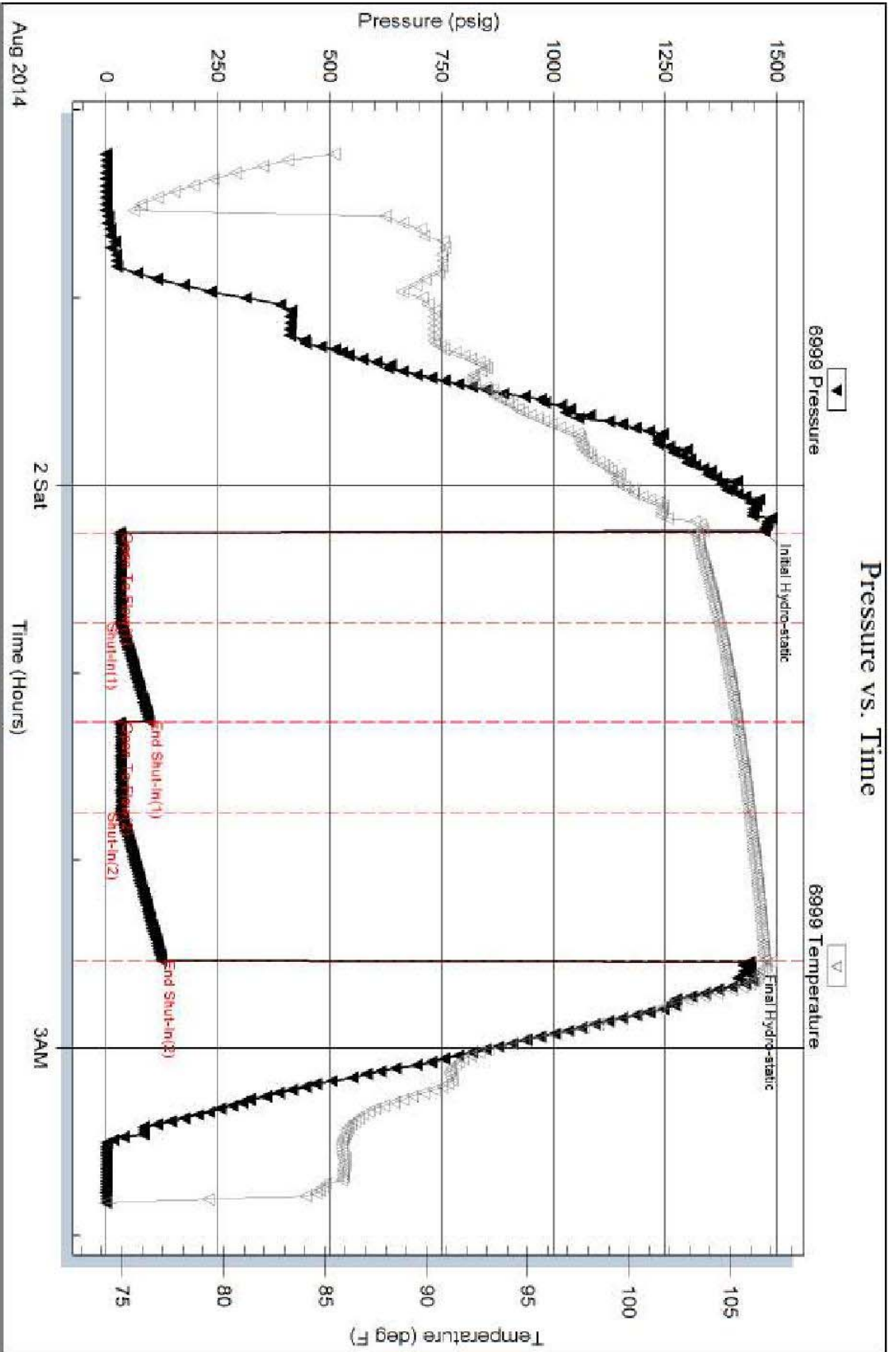
Serial #: 6999

Inside

Carrie Exploration and Development

Eryant-C-1

DST Test Number: 1



Tricolite Testing, Inc

Ref. No: 60301

Printed: 2014.08.02 @ 05:29:56

DST # 2 SUMMARY

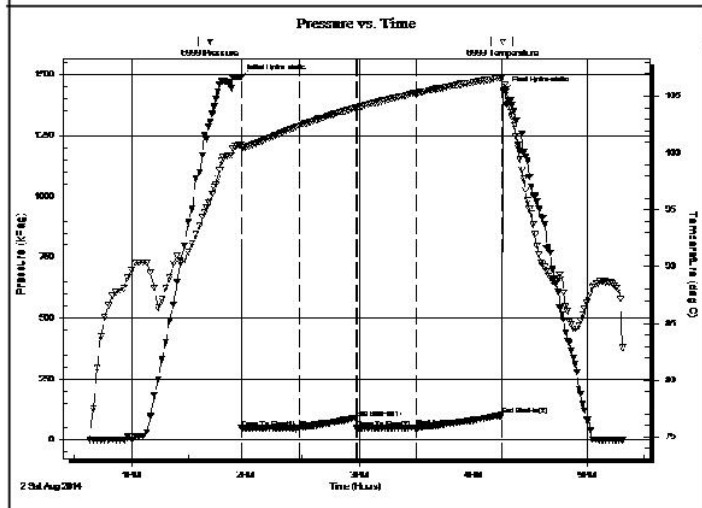
 TRILOBITE TESTING, INC.	DRILL STEM TEST REPORT	
	Carrie Exploration and Development 210 West 22nd Street Hays Kansas 67601 ATTN: Steve Reed	12-19s-11w-Barton Brayant C-1 Job Ticket: 60302 DST#: 2 Test Start: 2014.08.02 @ 12:37:00

GENERAL INFORMATION:

Formation: Lansing C-G	Test Type: Conventional Bottom Hole (Initial)
Deviated: No Whipstock: ft (KB)	Tester: Dustin Ellis
Time Tool Opened: 13:58:00	Unit No: S2-Great Bend-55
Time Test Ended: 17:19:00	Reference Elevations: 1783.00 ft (KB)
Interval: 3060.00 ft (KB) To 3134.00 ft (KB) (TVD)	1775.00 ft (CF)
Total Depth: 3134.00 ft (KB) (TVD)	KB to GR/CF: 8.00 ft
Hole Diameter: 7.88 inches	Hole Condition: Fair

Serial #: 6999	Outside
Press@RunDepth: 50.26 kPag @ 3129.06 ft (KB)	Capacity: 5000.00 kPag
Start Date: 2014.08.02	End Date: 2014.08.02
Start Time: 12:38:00	End Time: 17:19:00
Last Calib.: 2014.08.02	Time On Btm: 2014.08.02 @ 13:57:30
Time Off Btm: 2014.08.02 @ 16:17:00	

TEST COMMENT: 1st Open 30 minutes Weak building blow buit to 1 inch into a 5 gallon bucket of w ater.
 1st Shut in 30 minutes No blow back
 2nd Open 30 minutes Weak blow buit to 1 inch.
 2nd Shut in 45 minutes.No blow back.



PRESSURE SUMMARY			
Time (Min.)	Pressure (kPag)	Temp (deg C)	Annotation
0	1487.71	100.75	Initial Hydro-static
1	46.37	100.49	Open To Flow (1)
31	49.15	102.40	Shut-in(1)
61	91.14	103.99	End Shut-in(1)
62	46.43	104.01	Open To Flow (2)
93	50.26	105.29	Shut-in(2)
138	101.11	106.66	End Shut-in(2)
140	1434.01	105.64	Final Hydro-static

Recovery		
Length (ft)	Description	Volume (bbl)
7.00	Mud 100%	0.10

Gas Rates			
	Choke (inches)	Pressure (kPag)	Gas Rate (Mcf/d)

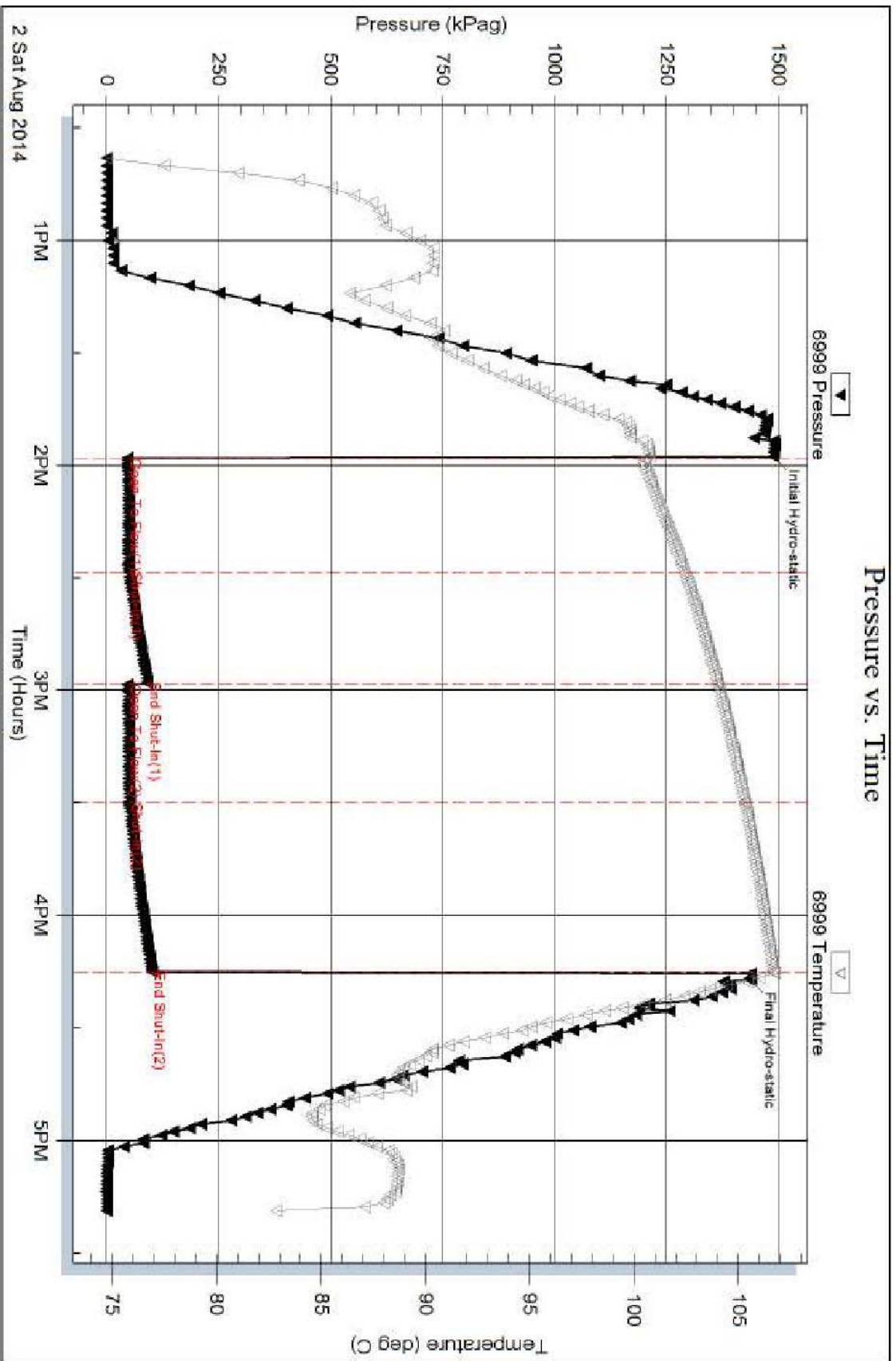
DST # 2 PRESSURE VS TIME CHART

Serial #: 6999

Outside: Carle Exploration and Development

Braynt C-1

DST Test Number: 2

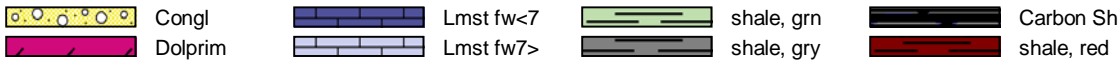


Triobite Testing, Inc

Ref. No: 60302

Printed: 2014.08.06 @ 11:02:24

ROCK TYPES



ACCESSORIES

MINERAL

- ▲ Chert, dark
- P Pyrite

FOSSIL

- F Fossils < 20%
- Oolite
- ⊕ Oomoldic
- ⊗ Fossilinid

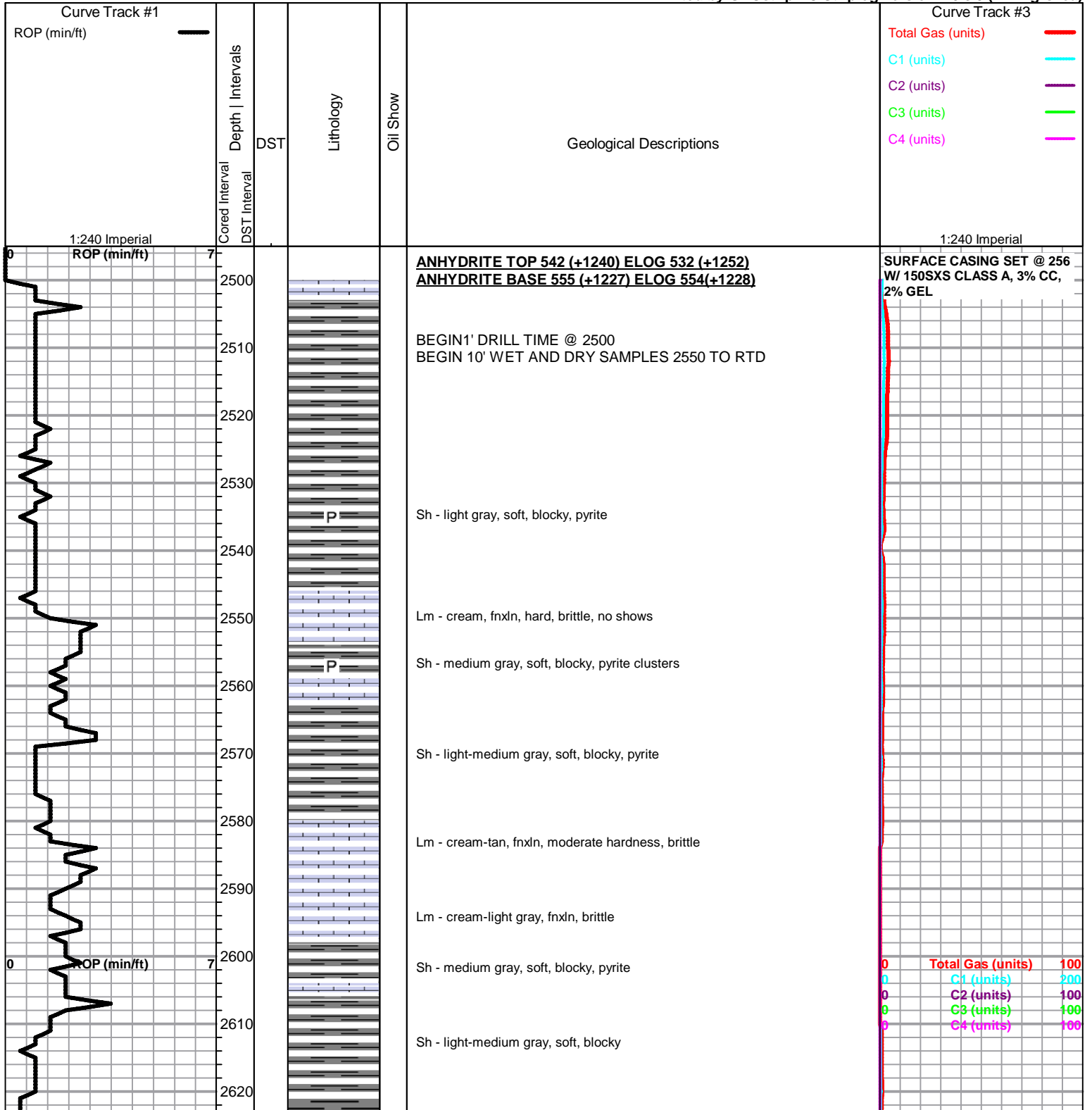
STRINGER

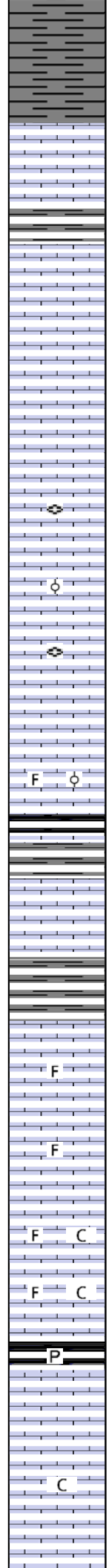
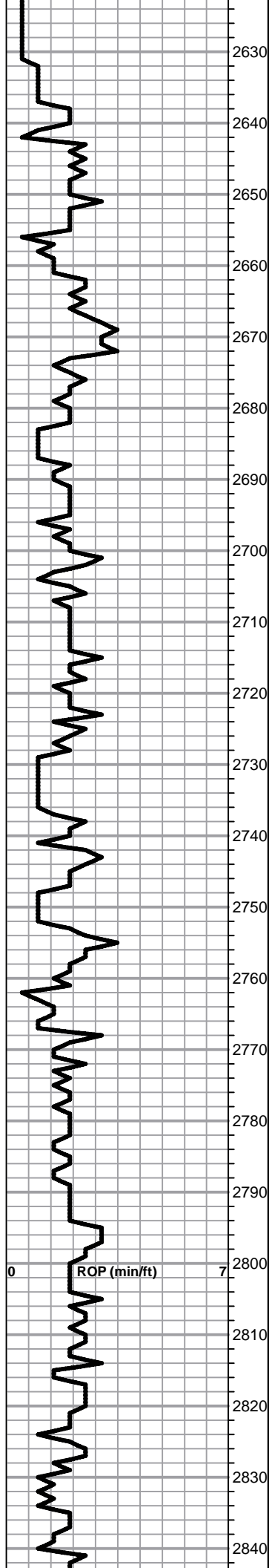
- ~ Chert
- green shale
- red shale

TEXTURE

- C Chalky
- L Lithogr

Printed by GEOstrip VC Striplog version 4.0.8.9 (www.grsi.ca)





Sh - medium gray, soft, blocky, earthy

TOPEKA SPL 2637 (-855) ELOG 2639 (-857)

Lm - cream, fn-medxn, hard, brittle

Sh - dark gray, soft, fissile

Lm - cream-tan, fnxn, dense, brittle

Lm - tan-light gray, fnxn, dense, hard

Lm - light gray, fn-medxn, brittle, no shows

Lm - tan, fnxn, hard, fusulinids

Lm - tan-light brown, fnxn, slightly oolitic, poorly developed, hard, brittle

Lm - light brown-medium gray, vfxn, dense, hard, fusulinids

Lm - tan-light gray, vfxn, dense, hard, brittle

Lm - light gray-medxn, slightly fossiliferous, slightly oolitic, friable, no shows

Sh - black, carbonaceous, fissile, waxy

Sh - light-medium gray, soft, blocky

Lm - cream, fnxn, dense, well cemented, very hard

Sh - medium gray, soft, blocky

Lm - tan-light brown, fnxn, brittle, fossiliferous in part

Lm - light brown-light gray, mottled, slightly fossiliferous, hard, brittle, no shows

Lm - tan-medium brown, fnxn, slightly fossiliferous, well cemented, dense, hard, slightly chalky

Lm - tan-cream, fnxn, slightly fossiliferous, hard, slightly chalky, no shows

Sh - black, carbonaceous, soft, waxy, fissile, bronze specks, pyrite

Lm - tan-light brown, fnxn, brittle, bedded chalk in part

Lm - tan-cream, medxn to granular, limited hardness, slightly chalky

Lm - cream-light brown, fnxn, hard, slightly fossiliferous, well cemented, bedded chalk in part

