

OPERATOR

Company: CARRIE EXPLORATION AND DEVELOPMENT
 Address: 210 WEST 22ND
 HAYS, KANSAS
 67601

Contact Geologist: RON HEROLD
 Contact Phone Nbr: 913-961-2760
 Well Name: AUDREY C-1
 Location: E2 SE SW NW S30 T22S R9W
 API: 15-155-21692-00-00

Pool:
 State: KANSAS

Field: ZENITH PEACE CREEK NORTH
 Country: USA

Scale 1:240 Imperial

Well Name: AUDREY C-1
 Surface Location: E2 SE SW NW S30 T22S R9W
 Bottom Location:
 API: 15-155-21692-00-00
 License Number: 6768
 Spud Date: 8/11/2014 Time: 3:34 PM
 Region: RENO COUNTY
 Drilling Completed: 8/16/2014 Time: 4:00 PM
 Surface Coordinates: 2310 FNL & 1064 FWL
 Bottom Hole Coordinates:
 Ground Elevation: 1739.00ft
 K.B. Elevation: 1748.00ft
 Logged Interval: 2700.00ft To: 3900.00ft
 Total Depth: 3900.00ft
 Formation: VIOLA
 Drilling Fluid Type: CHEMICAL / FRESH WATER GEL

SURFACE CO-ORDINATES

Well Type: Vertical
 Longitude: -98.3588551
 Latitude: 38.1090627
 N/S Co-ord: 2310 FNL
 E/W Co-ord: 1064 FWL

LOGGED BY

Company: SOLUTIONS CONSULTING, INC.
 Address: 108 WEST 35TH
 HAYS, KANSAS 67601

Phone Nbr: 785-639-1337
 Logged By: GEOLOGIST

Name: STEVE REED

CONTRACTOR

Contractor: SOUTHWIND DRILLING, INC.
 Rig #: 2
 Rig Type: MUD ROTARY
 Spud Date: 8/11/2014 Time: 3:34 PM
 TD Date: 8/16/2014 Time: 4:00 PM
 Rig Release: 8/17/2014 Time: 12:00 PM

ELEVATIONS

K.B. Elevation: 1748.00ft Ground Elevation: 1739.00ft
 K.B. to Ground: 9.00ft

NOTES

DECISION WAS MADE TO SET PRODUCTION CASING TO FURTHER TEST THE VIOLA, SIMPSON SAND AND OTHER ZONES OF INTEREST.

OPEN HOLE LOGGING PROVIDED BY PIONEER ENERGY SERVICES:
 DUAL INDUCTION LOG, DUAL COMPENSATED POROSITY LOG, AND MICRORESISTIVITY LOGS WERE
 COMPLETED

NO DRILL STEM TESTS PERFORMED

LOG TOPS COMPARISON AND DAILY ACTIVITY SUMMARY

	WELL NAME		COMPARISON WELL	COMPARISON WELL
	AUDREY # C-1		PEACE CREEK #C-1	SLEEPER 1-30
	API: 15-155-21692		API: 15-155-21670	API: 15-155-20923
FORMATION	SAMPLE TOPS	LOG TOPS	LOG TOPS (DATUM)	LOG TOPS (DATUM)
TOPEKA	2715' (-967')	2712' (-964')	-975'	NA
HEEBNER	3007' (-1259')	3004' (-1256')	-1269'	-1221'
TORONTO	3028' (-1275')	3018' (-1270')	-1284'	NA
DOUGLAS SHALE	3027' (-1279')	3024' (-1276')	-1291'	NA
BROWN LIME	3157' (-1409')	3156' (-1408')	-1420''	-1375'
LKC	3195' (-1447')	3190' (-1442')	-1454'	-1400'
BKC	No Call	3303' (-1521')	-1736'	-1704'
VIOLA	3673' (-1925')	3677' (-1929')	-1935'	-1834'
SIMPSON SHALE	3772' (-2024')	3768' (-2020')	-2031'	-1926'
SIMPSON SAND	3778' (-2030')	3775' (-2027')	-2037'	-1934'
ARBUCKLE	3840' (-2092')	3838' (-2090')	-2096'	-1992'
RTD	3900' (-2151')	3893' (-2145')	-2232'	-2035'

SUMMARY OF DAILY ACTIVITY

- 8-11-14** R.U., spud @ 3:00pm, 8 5/8" surface casing set at 260' w/50 sxs 60/35 6% gel, 3%cc, 175 sxs class A, 2% gel, #5 cc, plud down @ 9:00pm, WOC
- 8-12-14** 364', drilling
- 8-13-14** 1971', drilling, displaced at 2700'
- 8-14-14** 2790', drilling
- 8-15-14** 3350', drilling
- 8-16-14** 3725', drilling, TD of 3900 reached @ 4:00pm, CFS, short trip (25 stands) CTCH, TOWB for logs, survey 3/4°, logging, prepare to set production casing
- 8-17-14** 3900', 5.5' production casing set at 3892' port collar set @ 1491' w/165 sxs of 60/40 Poz, 2% gel, WOC, release rig

ROCK TYPES



ACCESSORIES

MINERAL

P Pyrite
Mc Mica

FOSSIL

F Fossils < 20%
O Oolite
O Oomoldic
F Fossilinid

STRINGER

~ Chert
* Sandstone

TEXTURE

C Chalky
L Lithogr

OTHER SYMBOLS

EVENTS

⌋ Casing Shoe
▽ RTF
▶ Sidewall
▲ Left Casing Shoe
▼ Right Casing Shoe

INTERVALS

■ Core
• DST

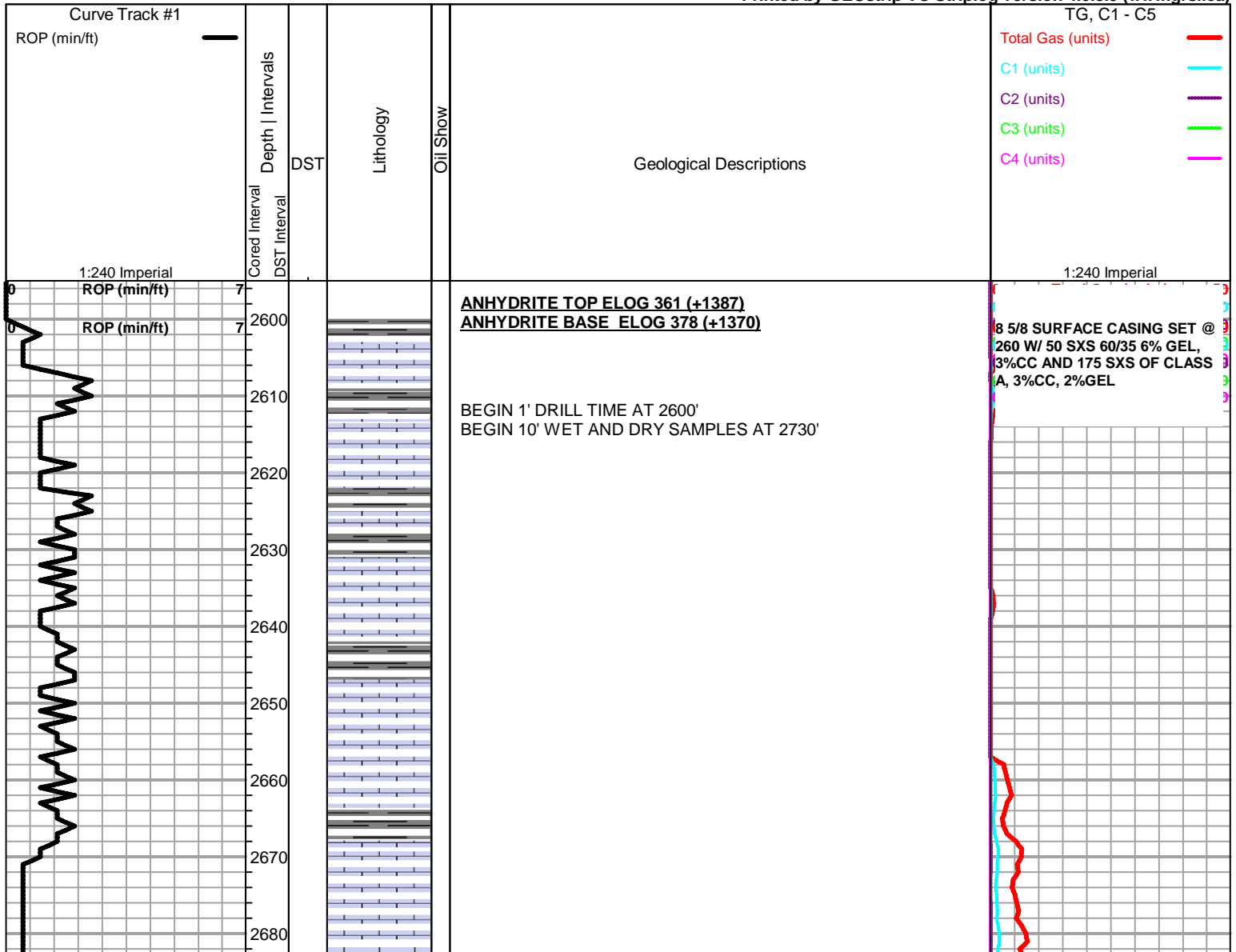
Oil Show

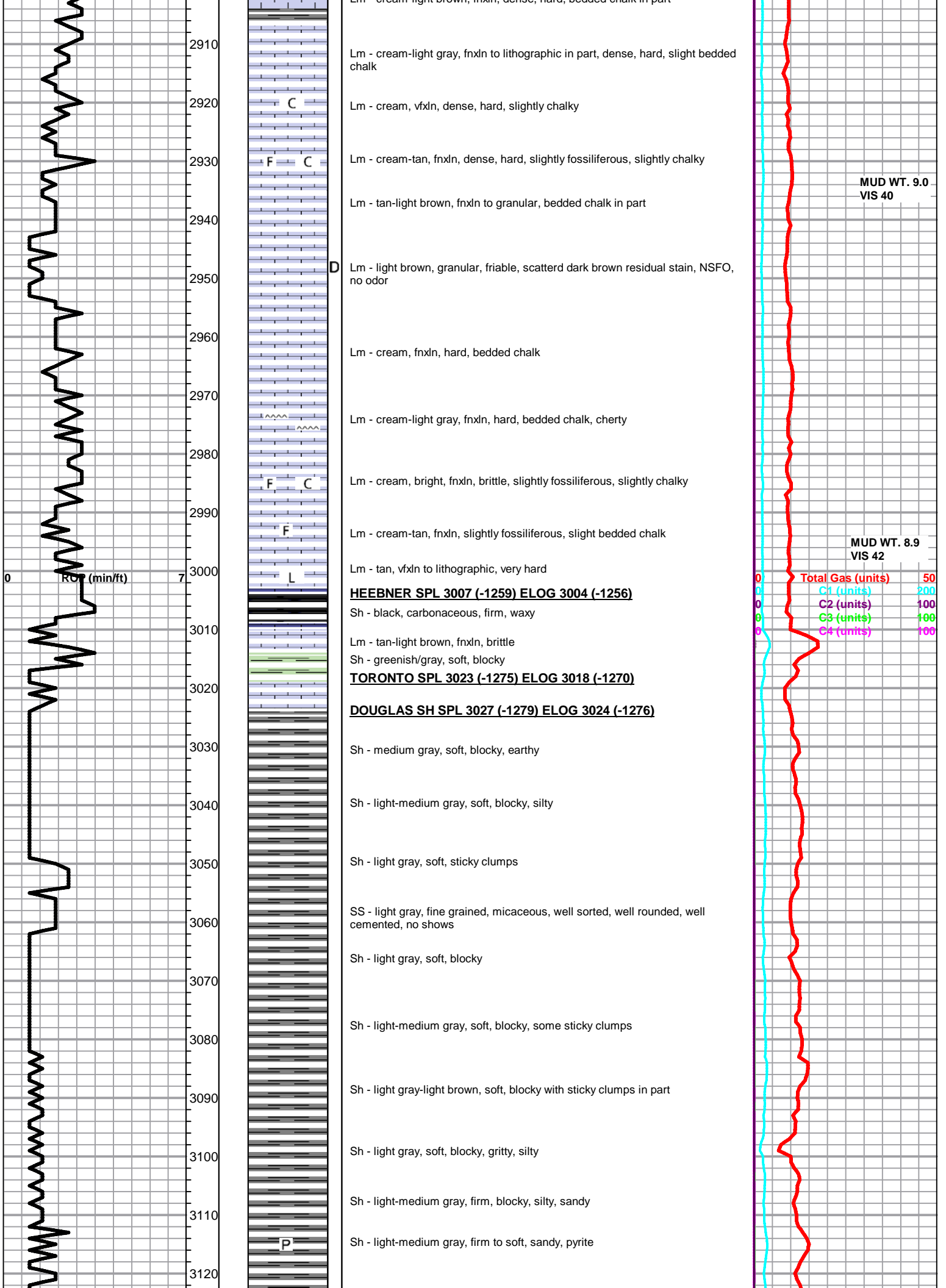
● Good Show
● Fair Show
● Poor Show
○ Spotted or Trace
○ Questionable Stn
D Dead Oil Stn
■ Fluorescence
* Gas

DST

■ DST Int
■ DST alt
■ Core
|| tail pipe

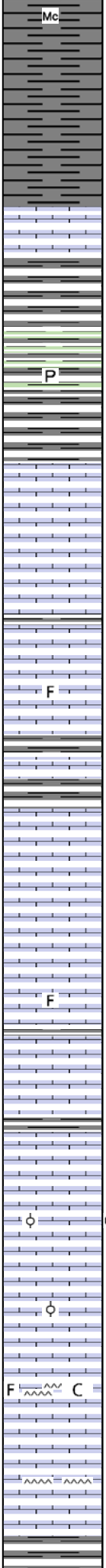
Printed by GEOstrip VC Striplog version 4.0.8.9 (www.grsi.ca)





3130
3140
3150
3160
3170
3180
3190
3200
3210
3220
3230
3240
3250
3260
3270
3280
3290
3300
3310
3320
3330
3340

ROP (min/ft)



Sh - light gray, soft, blocky, micaceous black specks

Sh - light-medium gray, firm, waxy, forming sticky clumps

BROWN LIME SPL 3157 (-1409) ELOG 3156 (-1408)

Lm - medium brown, vfxln, dense, very hard

Sh - light gray, firm, waxy, gritty in part

Sh - greenish/ gray, firm, waxy, pyrite

Sh - light-medium gray, fnxln, hard, brittle
LKC SPL 3195 (-1447) ELOG 3190 (-1442)

Lm - tan-light brown, fnxln, hard, brittle

Lm - cream-tan, slightly fossiliferous, fnxln, hard, brittle

Lm - light-medium brown, fnxln, brittle

Sh - light gray, soft, blocky

Lm - medium brown, vfxln, dense, very hard

Lm - cream-light brown, fnxln to granular in part, brittle

Lm - light-medium brown, fine interxln porosity, dense, hard, tight

Lm - light gray-cream, slightly fossiliferous, fnxln to slightly granular

Lm - cream, oolitic, fine interxln porosity, firm to soft on crush

Lm - cream-light gray, fnxln, hard, slight bedded chalk

Lm - cream, oolitic, pinpoint porosity, scattered vugs, light brown stain, streaming wet cut under UV light, NSFO, no odor

Lm - light-medium brown, oolitic, poorly developed, dense, hard, brittle

Lm - cream-tan, fossiliferous, fnxln matrix, dense, hard, brittle, chalky in part, cherty

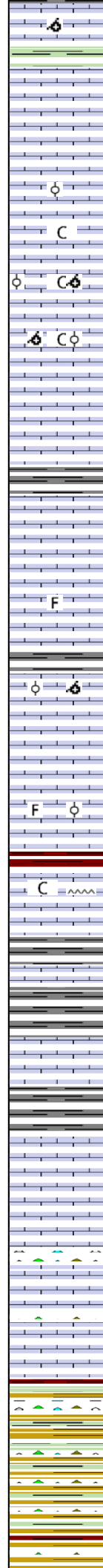
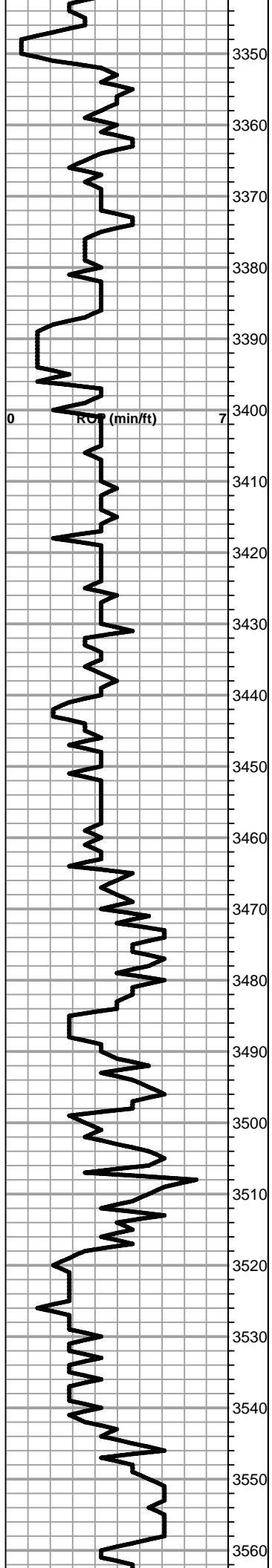
Lm - tan-light brown, slightly fossiliferous, bedded chalk, cherty

Lm - cream, fnxln, dense, hard

MUD WT. 9.0
VIS 42

0	Total Gas (units)	50
0	C1 (units)	200
0	C2 (units)	100
0	C3 (units)	100
0	C4 (units)	100

MUD WT. 9.2
VIS 45



Lm - light brown, oomoldic, firm on crush, no shows

Sh - greenish gray soft, sticky

Lm - light brown, fxlN, hard, bedded chalk

Lm - cream, oolitic, moderately friable, no staining, no shows

Lm - cream-light brown, fxlN, hard, slightly chalky

Lm - tan, oolitic/oomoldic, poor development, hard, brittle, slightly chalky

Lm - light brown, oolitic/oomoldic, brittle, no shows, slightly chalky

Lm - light brown, vfxN, dense, hard, slight bedded chalk

Lm - light gray-light brown, fxlN, hard, bedded chalk

Lm - light brown, fossiliferous, dense, hard, brittle

Lm - tan, oolitic/oomoldic, poor development, dense, hard, bedded chalk

Lm - tan, fxlN, dense, very hard, bedded chalk in part

Lm - cream-tan, slightly fossiliferous with oolites, dense, hard

BKC ELOG 3462 (-1714)

Sh - maroon/gray, soft, sticky

Lm - cream-light brown, fxlN, dense, hard, slightly chalky, cherty

Lm - light gray-brown, fxlN, brittle, bedded chalk

Sh - light gray, firm, blocky

Sh - medium brown / gray, firm, blocky

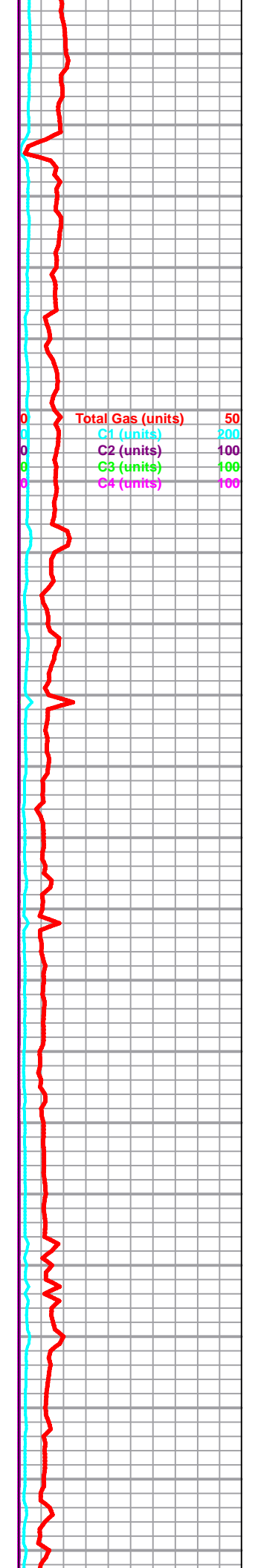
Lm - light gray, vfxN, dense, hard

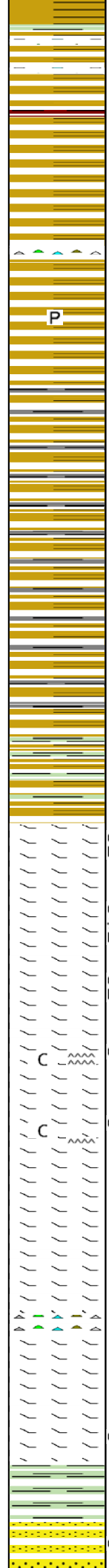
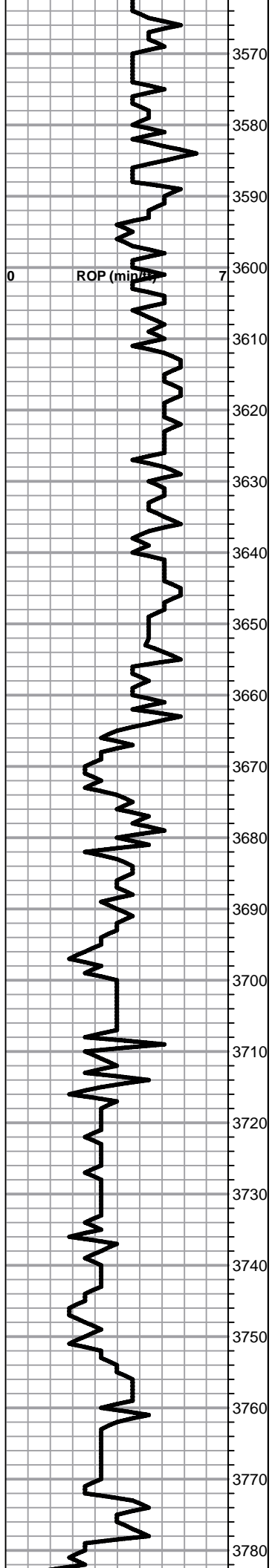
Lm - cream, fxlN, brittle, excess various colored cherts

Lm - light brown, vfxN, brittle, bedded chalk, cherty

Sh - greenish gray/ maroon, soft, blocky, various colored cherts

Sh - greens, maroons, browns, firm, blocky, some sticky, various mixture of colored cherts





Sh - brown, lime green, gray, various colored cherts throughout

Sh - maroon, brown, soft, blocky, sticky, cherty

Sh - various colors, firm, blocky, some sticky

Sh - lime green / brown / maroon / yellow, firm, blocky, various colored cherts

Sh - A/A with pyrite clusters

Sh - medium gray / brown, firm, blocky, abundance of varied colored cherts

Sh - A/A

Sh - A/A

Sh - mostly medium gray with mixture of various colored shales, cherty

Sh - A/A

Sh - greenish gray, firm, blocky, cherty

VIOLA SPL 3673 (-1925) ELOG 3677 (-1929)

Lm - cream-tan, dolomitic, fn interxn porosity, light saturated stain, good odor, streaming wet cut under UV light, NSFO

Lm - tan, dolomitic, fn interxn porosity, saturated gassy oil stain, NSFO, strong odor, uv fluorescence

Lm - tan, dolomitic, fnxn, saturated golden brown stain, UV fluorescence, fair odor, NSFO

Lm - cream-tan, dolomitic, fine interxn porosity, faint odor, light scattered stain, chalky, cherty

Lm - tan-cream, fnxn, NSFO, slight odor, light scattered staining, chalky, cherty

Lm - cream, fine interxn porosity, clean and barren, no shows

Lm - cream-tan, fnxn, brittle, no odor, no shows

Lm - cream, granular, crumbly, excess cherts and shales various colored

Lm - cream, fnxn, dense, very hard

Lm - cream-tan, fnxn, brittle, slight stain, no shows, no odor

SIMPSON SHALE SPL 3772 (-2024) ELOG 3768 (-2020)

Sh - greenish gray, firm, blocky

SIMPSON SAND SPL 3778 (-2030) ELOG 3775 (-2027)

Ss - clear to light brown, micaceous, well sorted, well rounded, clear quartz grains firmly cemented, slight stain, NSFO, good odor, no wet cut

TESTED DETECTOR WITH LIGHTER, FALSE PEAK

Total Gas (units) 50
 C1 (units) 200
 C2 (units) 100
 C3 (units) 100
 C4 (units) 100

DATA LOST BECAUSE LIGHT PLANT SHUT DOWN

MUD WT. 9.0
 VIS 42

