



Pioneer Energy Services

Dual Induction Log

API No.	15-155-21,692-00-00	
Company	Carrie Exploration and Development	
Well	Audrey No. C-1	
Field	Zenith Peace Creek North	
County	Reno	State Kansas
Location	E2-SE-SW-NW 2310' FNL & 1064' FWL	
Sec: 30	Twp: 22S	Rge: 9W
Permanent Datum	Ground Level	Elevation 1739
Log Measured From	Kelly Bushing	9 Ft. Above Perm. Datum
Drilling Measured From	Kelly Bushing	K.B. 1748 D.F. 1739 G.L. 1739
Other Services	CNL/CDL MEL	

Date	8/16/14
Run Number	One
Depth Driller	3900
Depth Logger	3893
Bottom Logged Interval	3892
Top Log Interval	250
Casing Driller	8.625 @ 260
Casing Logger	258
Bit Size	7.875
Type Fluid in Hole	Chemical
Salinity, ppm CL	N/A
Density / Viscosity	N/A
pH / Fluid Loss	N/A
Source of Sample	Flowline
Rm @ Meas. Temp	N/A @ N/A
Rmf @ Meas. Temp	N/A @ N/A
Rmc @ Meas. Temp	N/A @ N/A
Source of Rmf / Rmc	Charts
Rm @ BHT	N/A @ N/A
Operating Rig Time	4 Hours
Max Rec. Temp. F	119
Equipment Number	10
Location	Hays
Recorded By	J. Henrickson
Witnessed By	Steve Reed

<<< Fold Here >>>

All interpretations are opinions based on inferences from electrical or other measurements and we cannot and do not guarantee the accuracy or correctness of any interpretation, and we shall not, except in the case of gross or willful negligence on our part, be liable or responsible for any loss, costs, damages, or expenses incurred or sustained by anyone resulting from any interpretation made by any of our officers, agents or employees. These interpretations are also subject to our general terms and conditions set out in our current Price Schedule.

Comments

Thank you for using Log-Tech, Inc.
(785) 625-3858

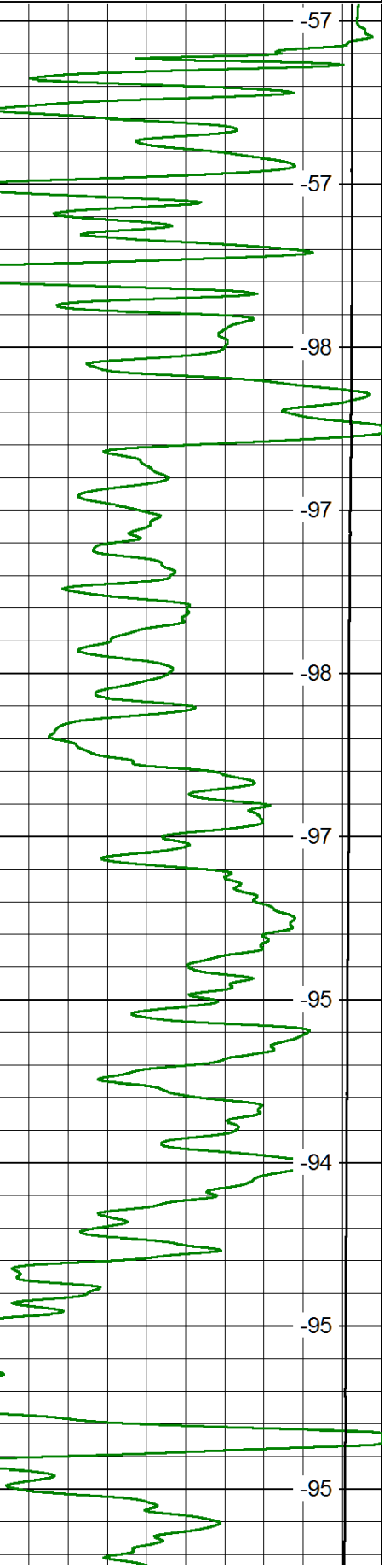
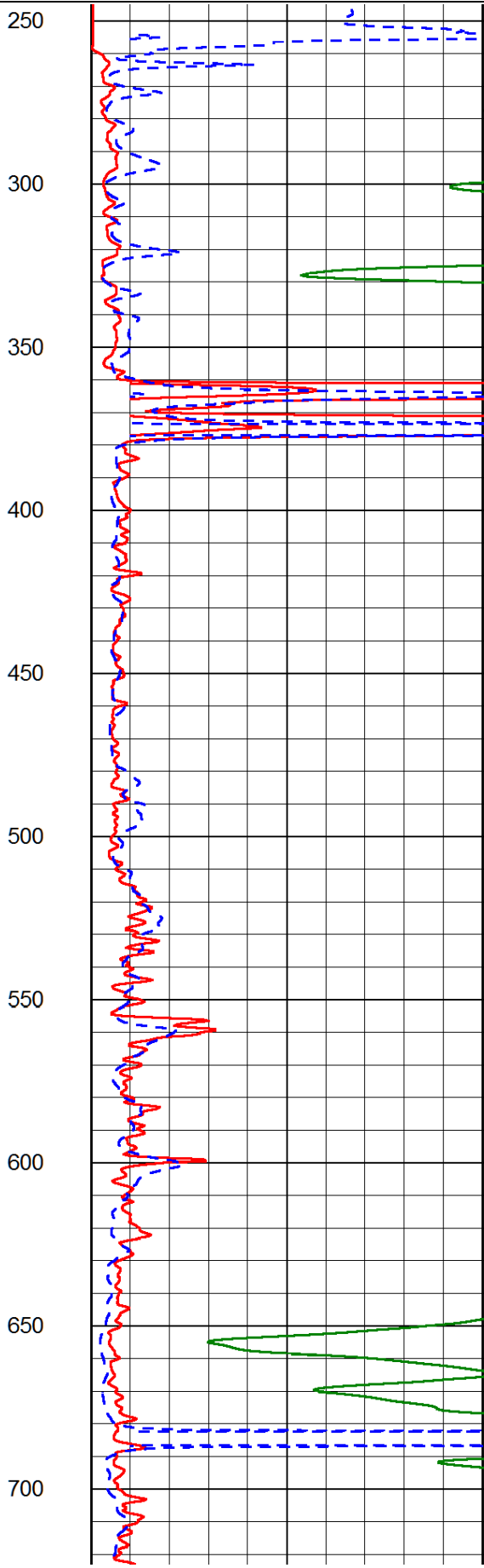
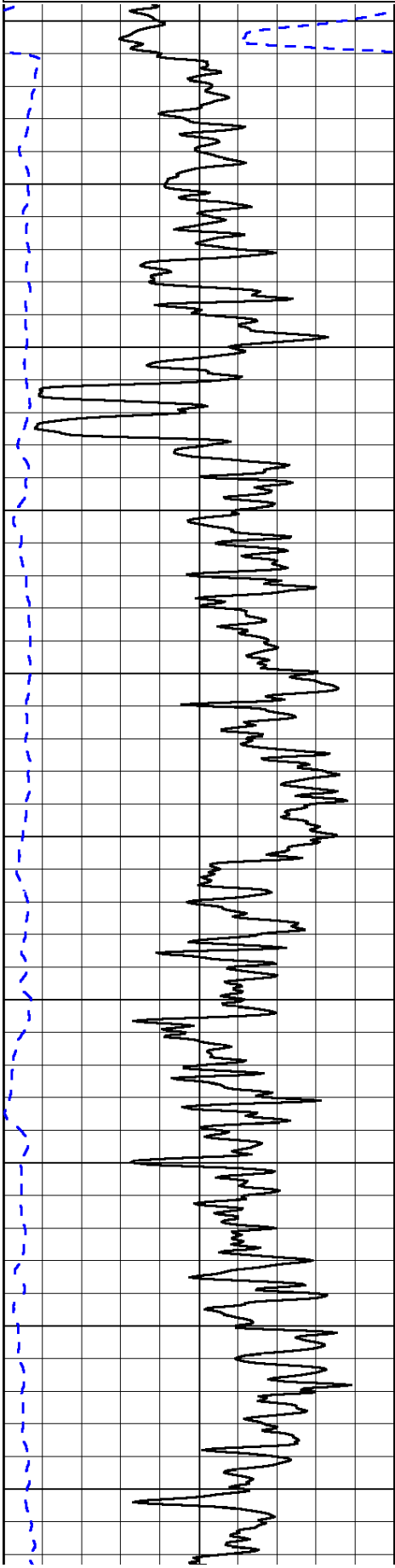
Great Bend Kansas
South to HWY 19, 23 East to Langdon Rd, 4 South, 2 West, 1/2 North, East Into

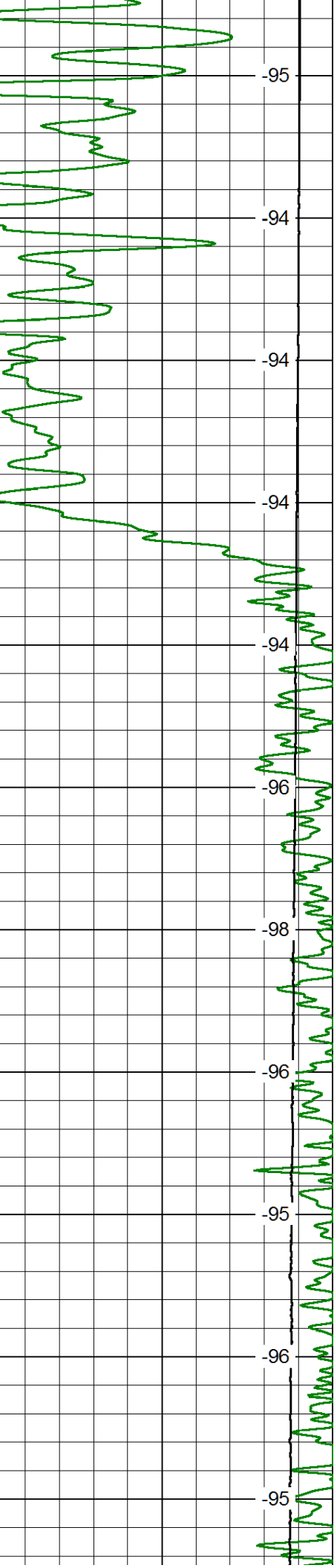
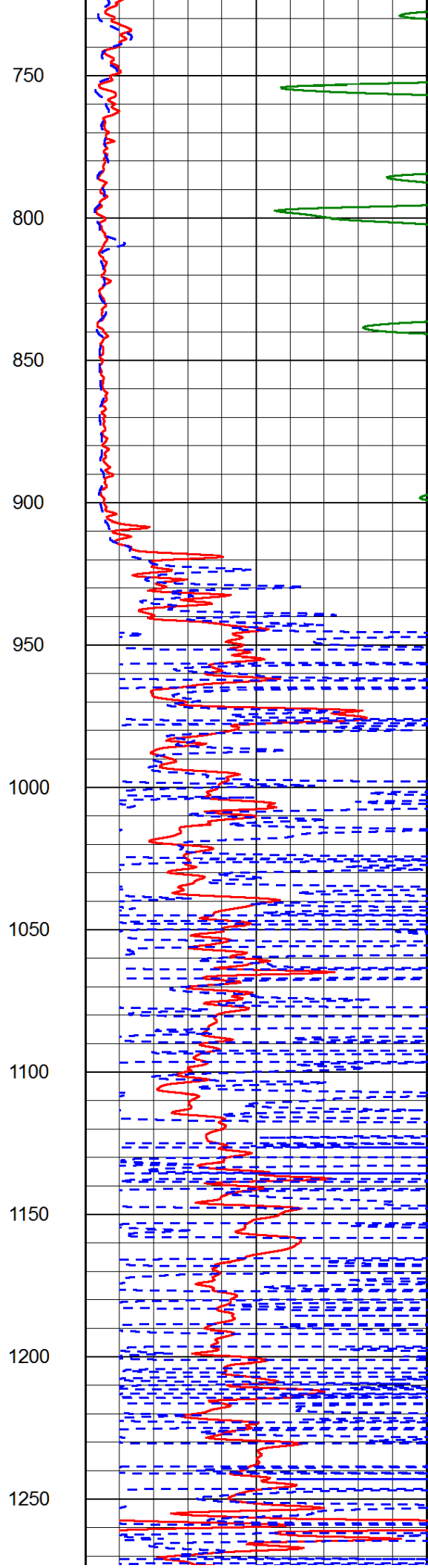
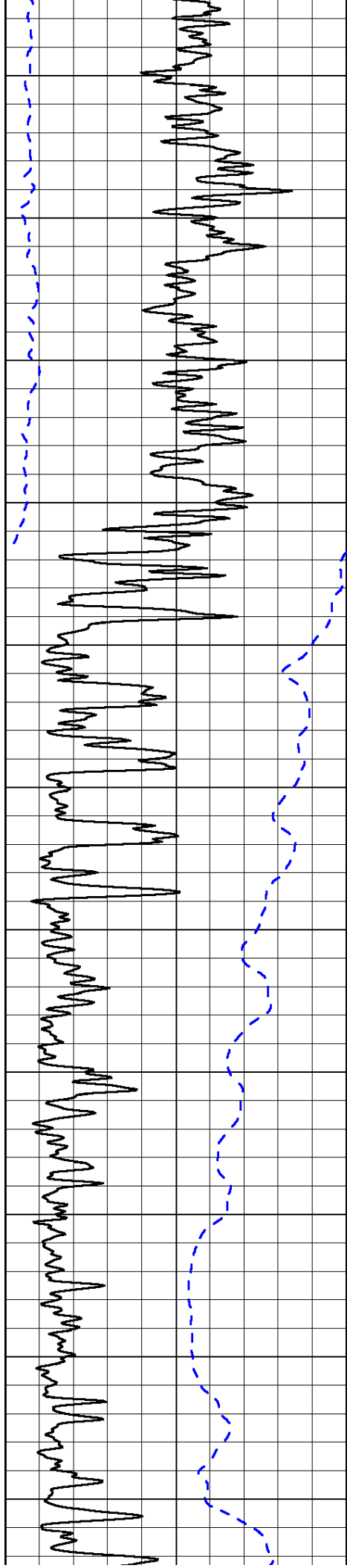
Database File: carrie_audrey_c_1hd.db
 Dataset Pathname: DIL/carstk
 Presentation Format: dil2in
 Dataset Creation: Sat Aug 16 23:22:05 2014
 Charted by: Depth in Feet scaled 1:600

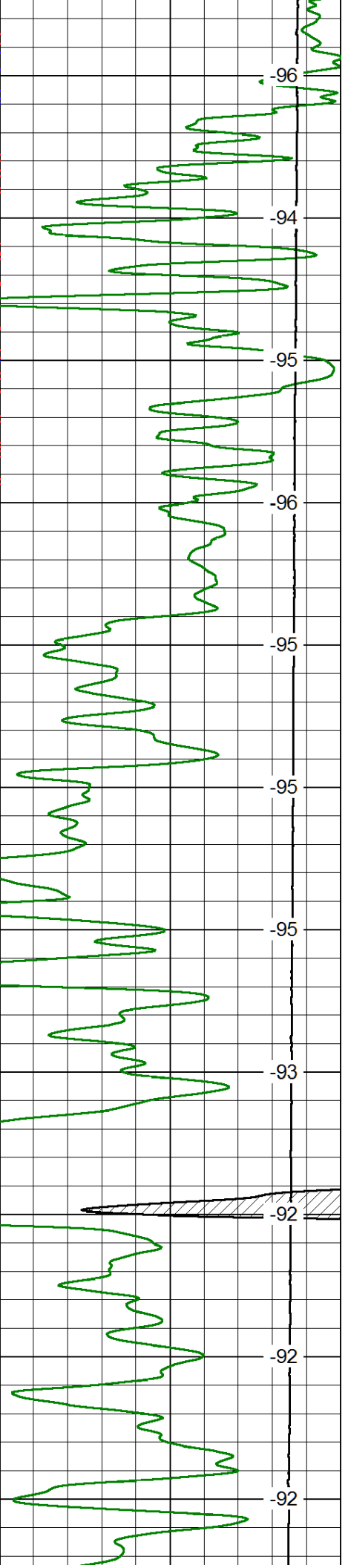
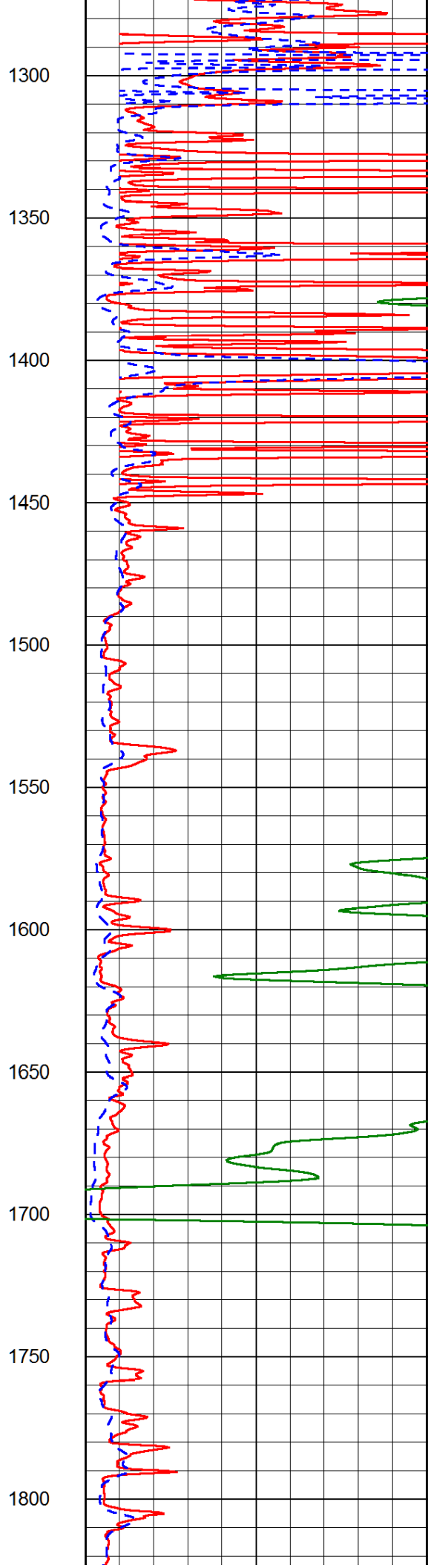
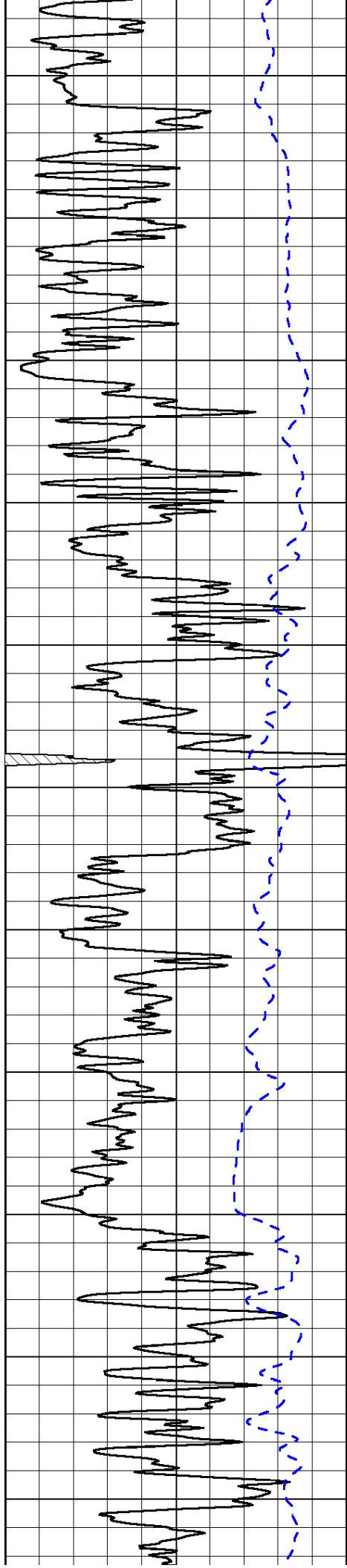
0 Gamma Ray 150
-200 SP (mV) 0

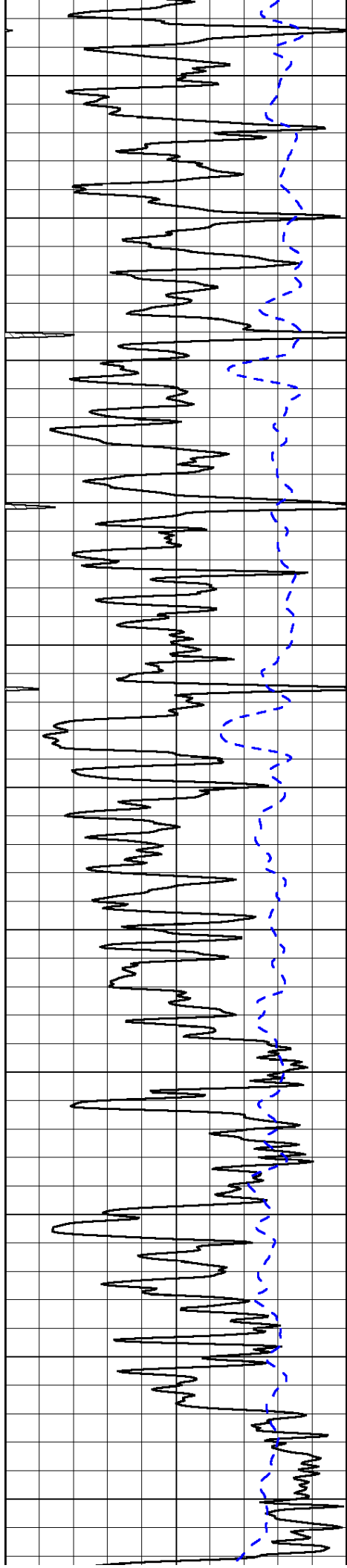
0 Shallow Resistivity 50
0 Deep Resistivity 50
1000 Conductivity 0
15000 Line Tension 0
50 Shallow Resistivity 500
50 Deep Resistivity 500

LSPD

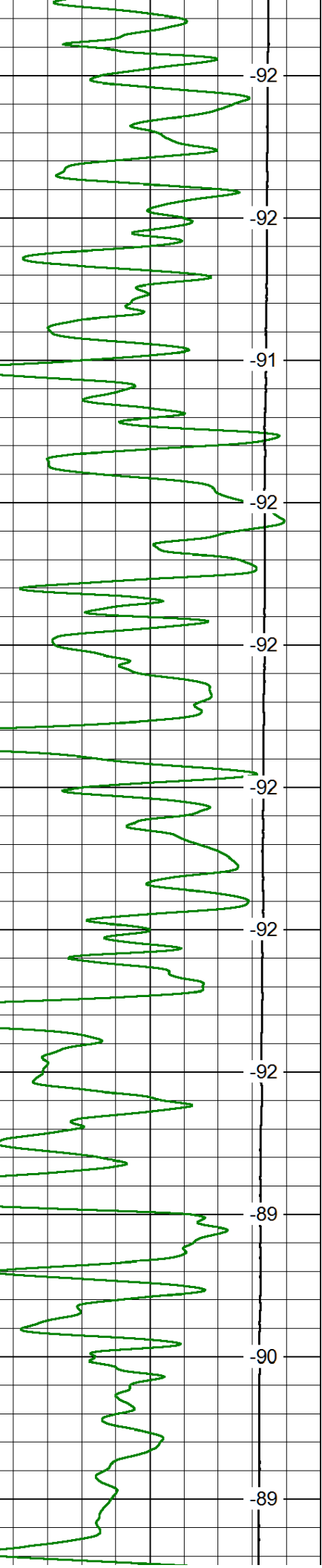
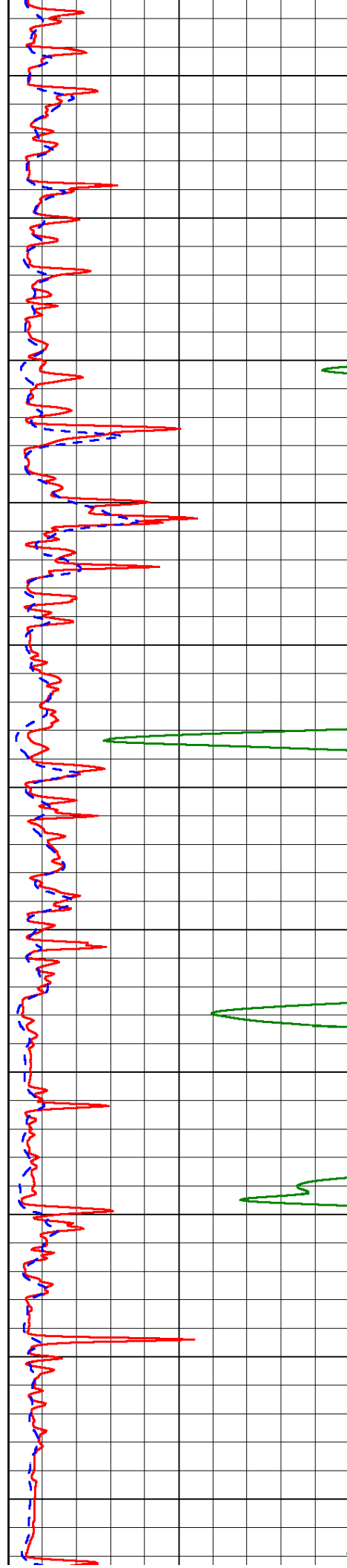




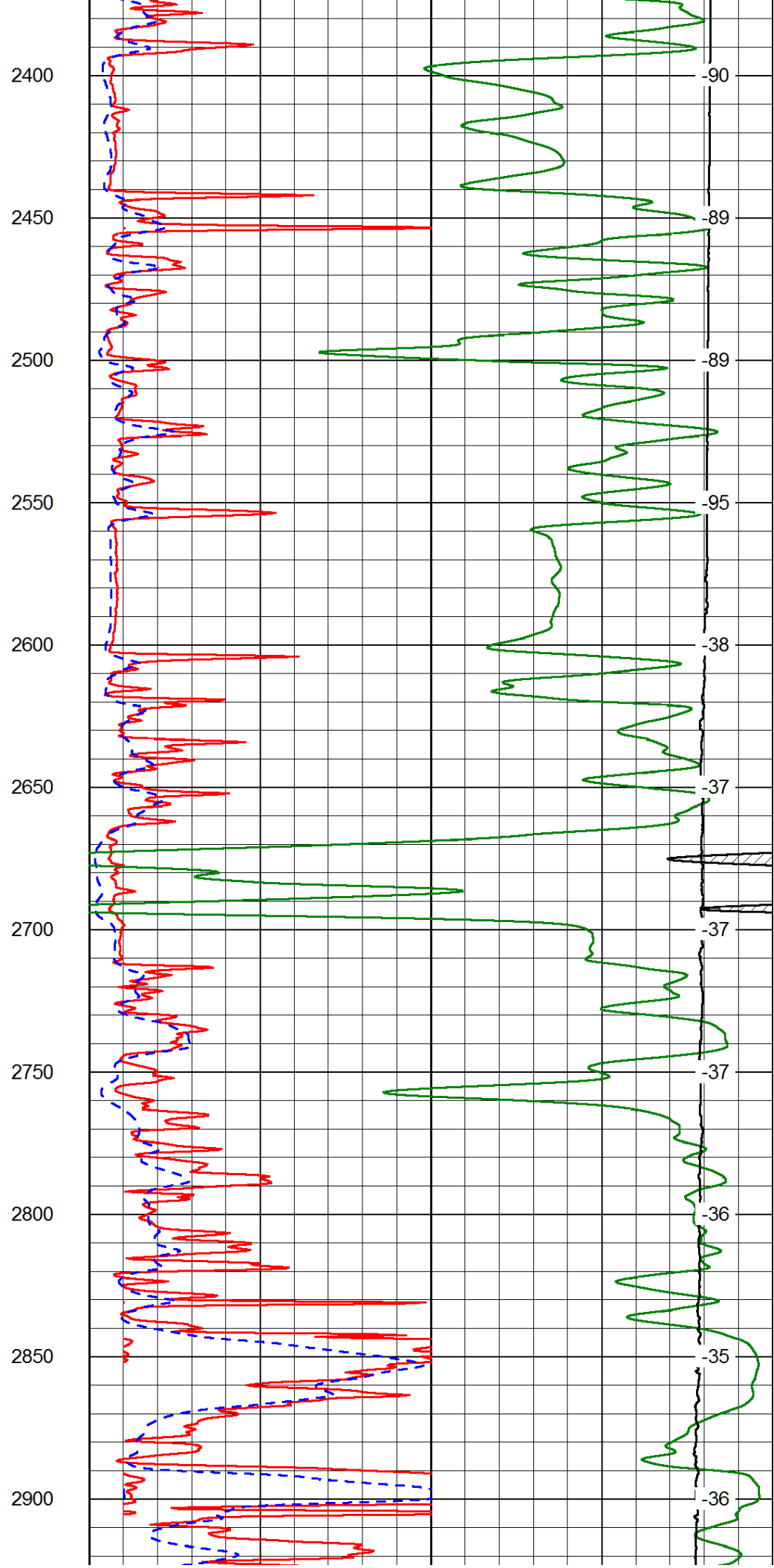
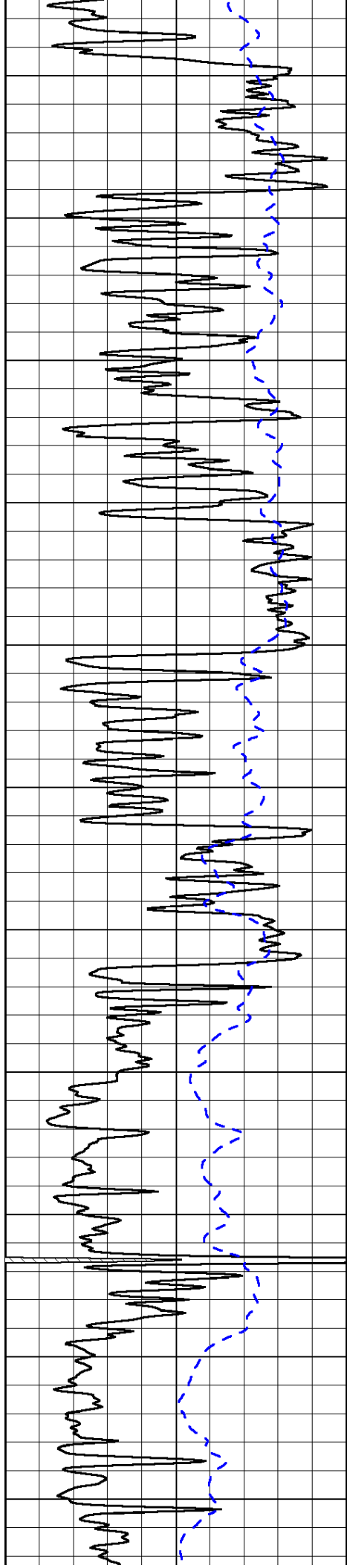


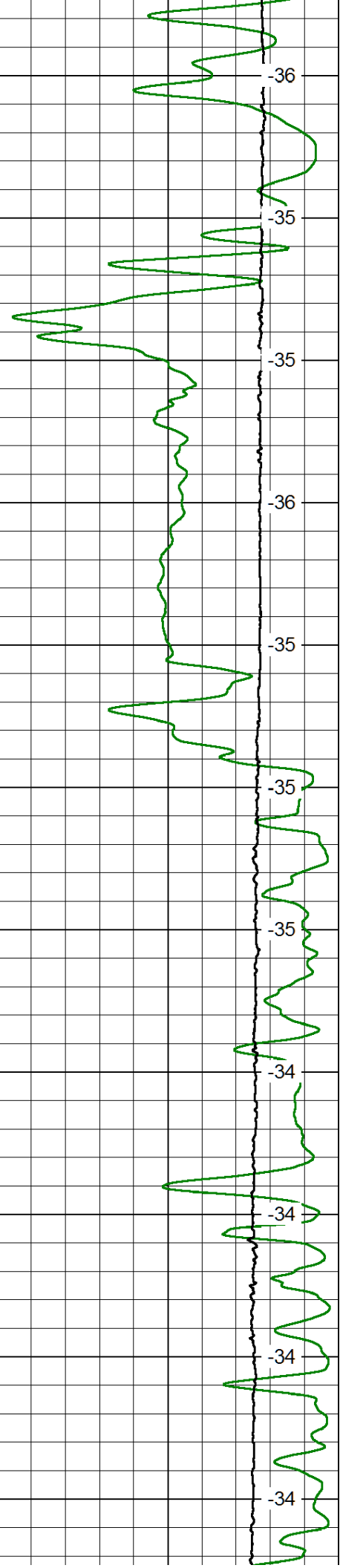
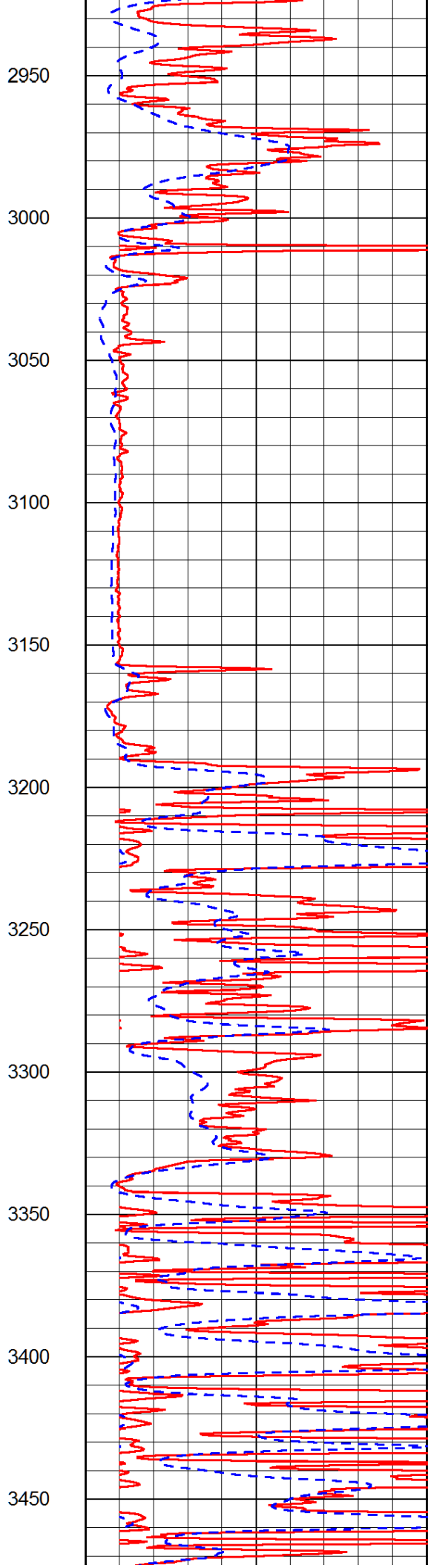
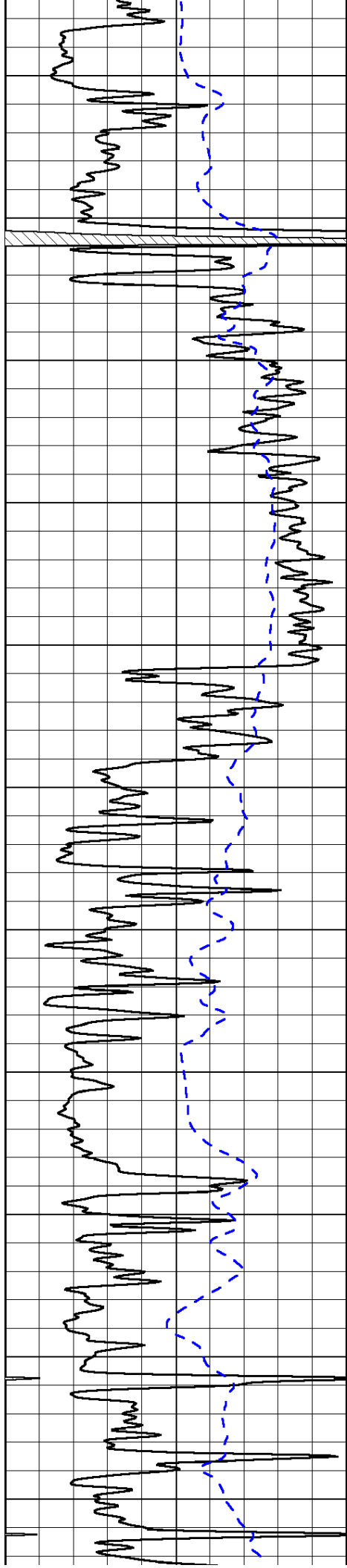


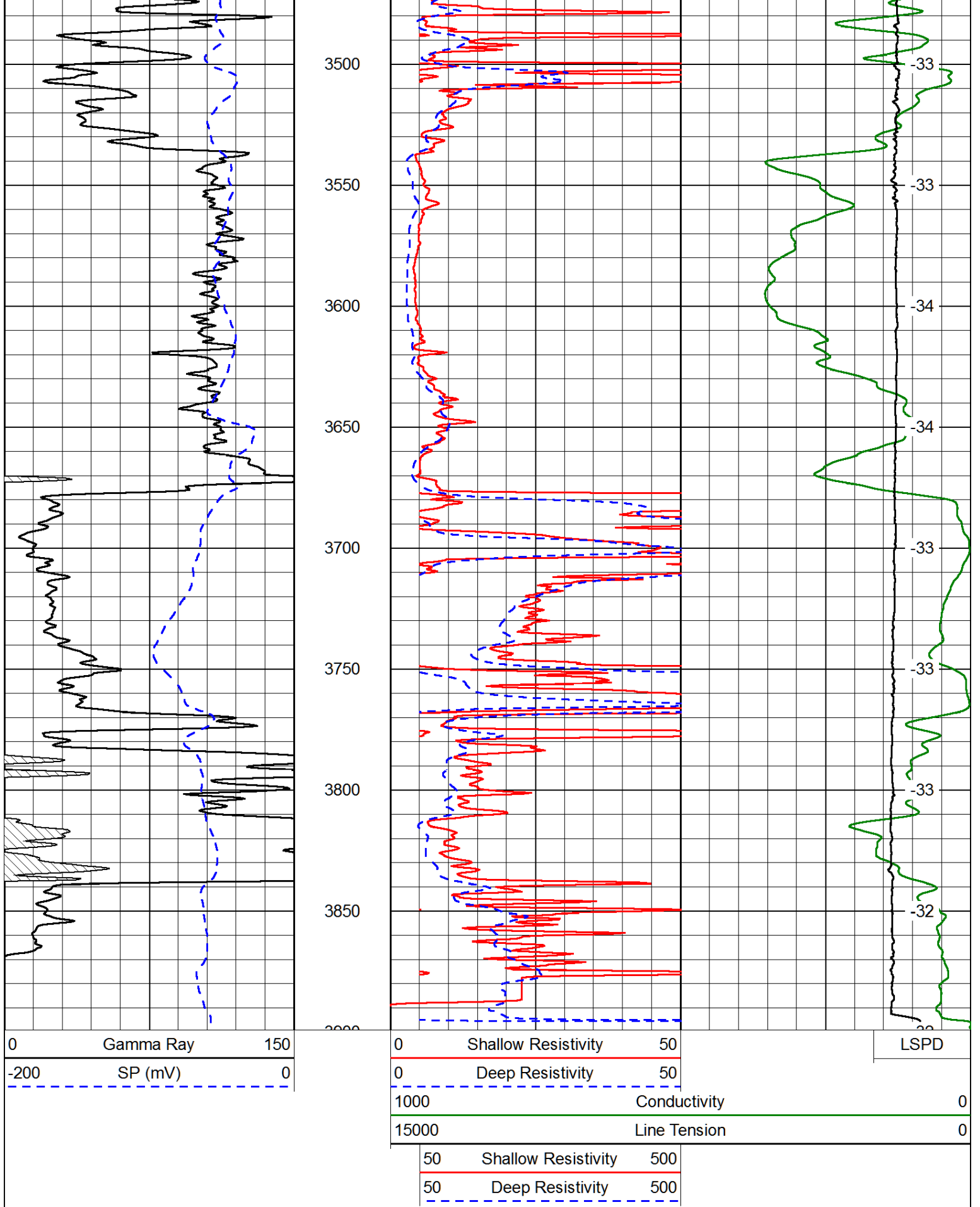
1850
1900
1950
2000
2050
2100
2150
2200
2250
2300
2350



-92
-92
-91
-92
-92
-92
-92
-92
-92
-89
-90
-89





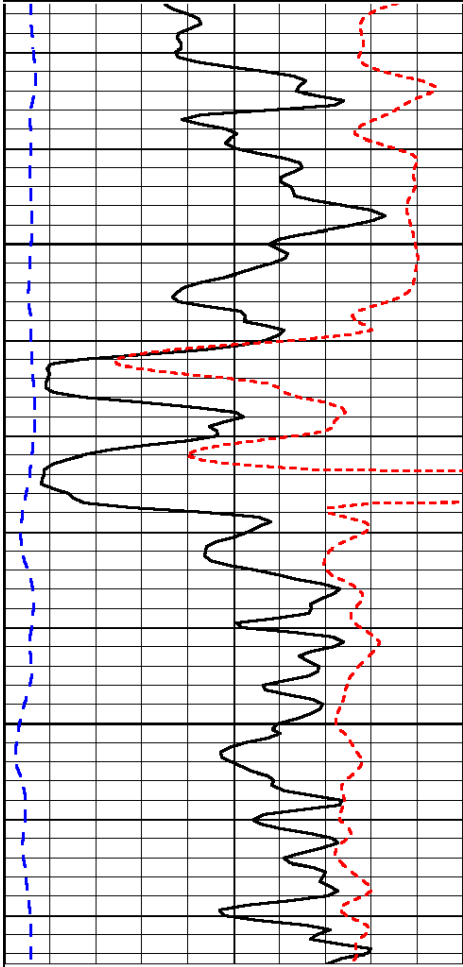


Database File: carrie_audrey_c_1hd.db
 Dataset Pathname: DIL/carstk
 Presentation Format: dil
 Dataset Creation: Sat Aug 16 23:22:05 2014

0	Gamma Ray	150
-160	RXO/RT	40
-200	SP (mV)	0

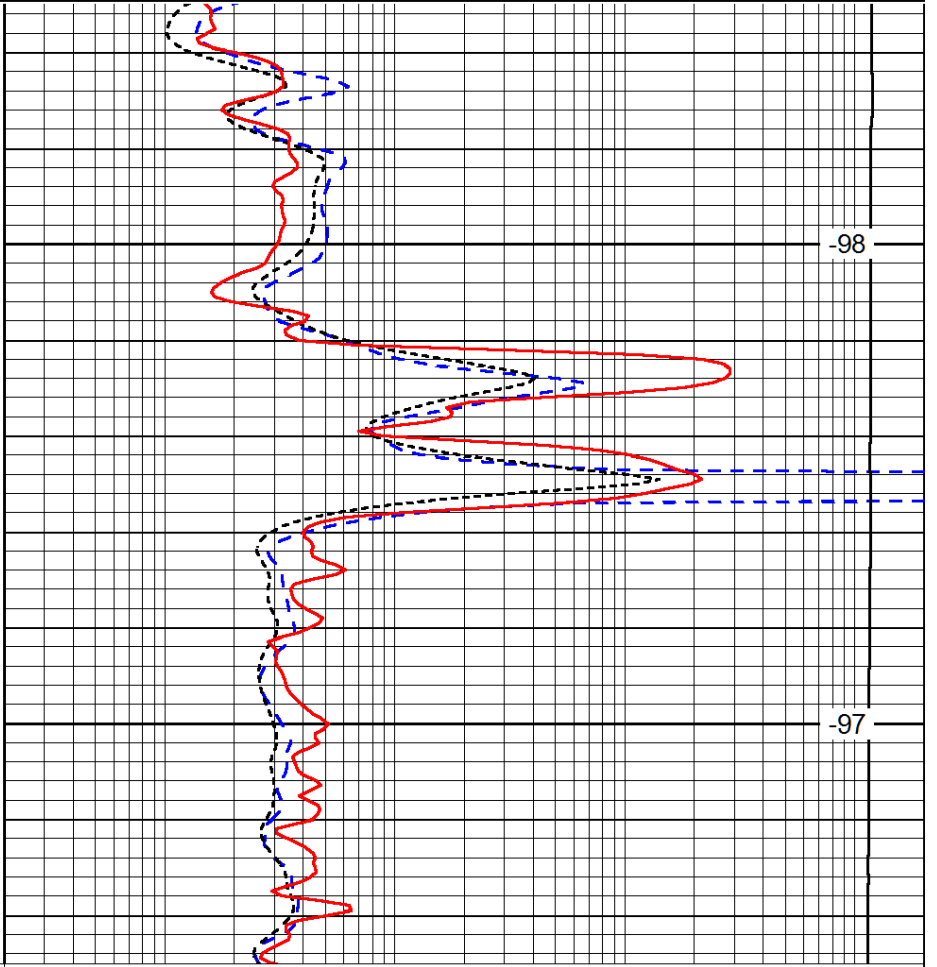
0.2	Deep Resistivity	2000
0.2	Medium Resistivity	2000
0.2	Shallow Resistivity	2000
10000	Line Tension	0

LSPD



350

400



-98

-97

0	Gamma Ray	150
-160	RXO/RT	40
-200	SP (mV)	0

0.2	Deep Resistivity	2000
0.2	Medium Resistivity	2000
0.2	Shallow Resistivity	2000
10000	Line Tension	0

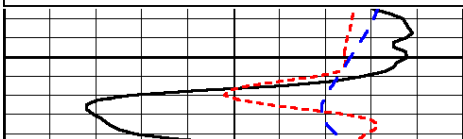
LSPD

Database File: carrie_audrey_c_1hd.db
 Dataset Pathname: DIL/carstk
 Presentation Format: dil
 Dataset Creation: Sat Aug 16 23:22:05 2014
 Charted by: Depth in Feet scaled 1:240

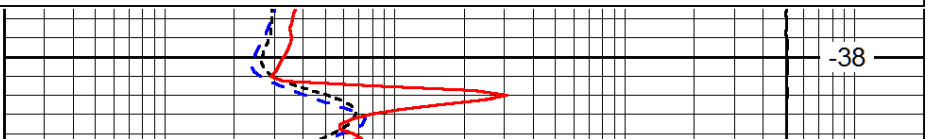
0	Gamma Ray	150
-160	RXO/RT	40
-200	SP (mV)	0

0.2	Deep Resistivity	2000
0.2	Medium Resistivity	2000
0.2	Shallow Resistivity	2000
10000	Line Tension	0

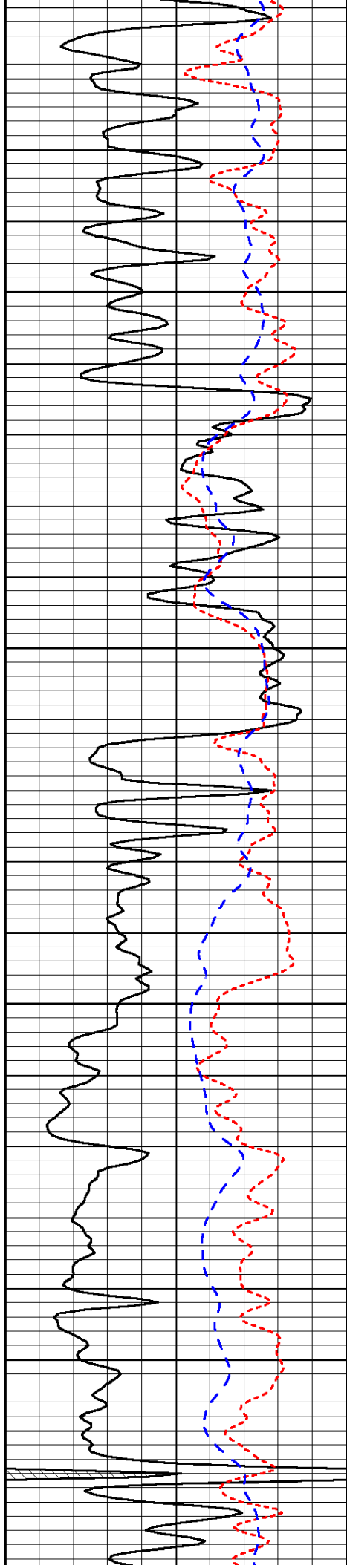
LSPD



2600



-38

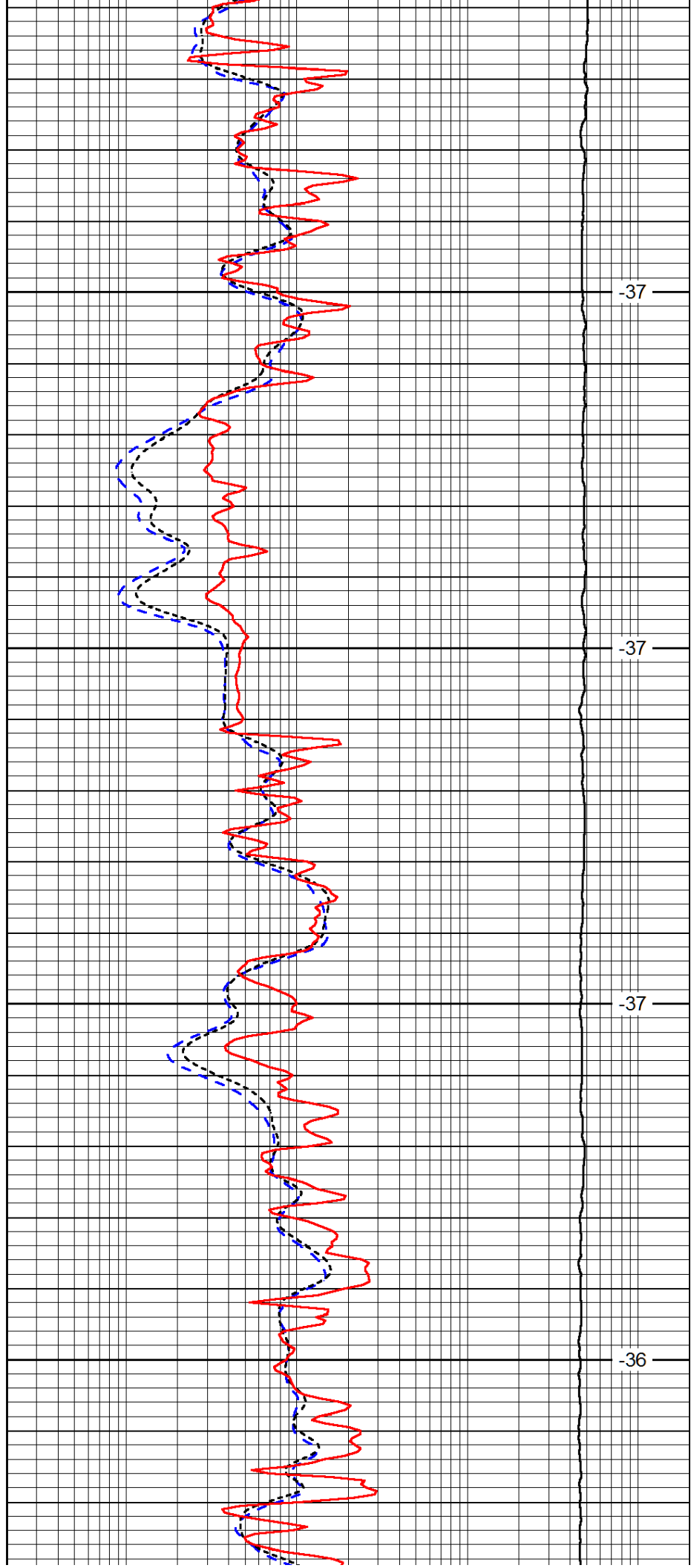


2650

2700

2750

2800

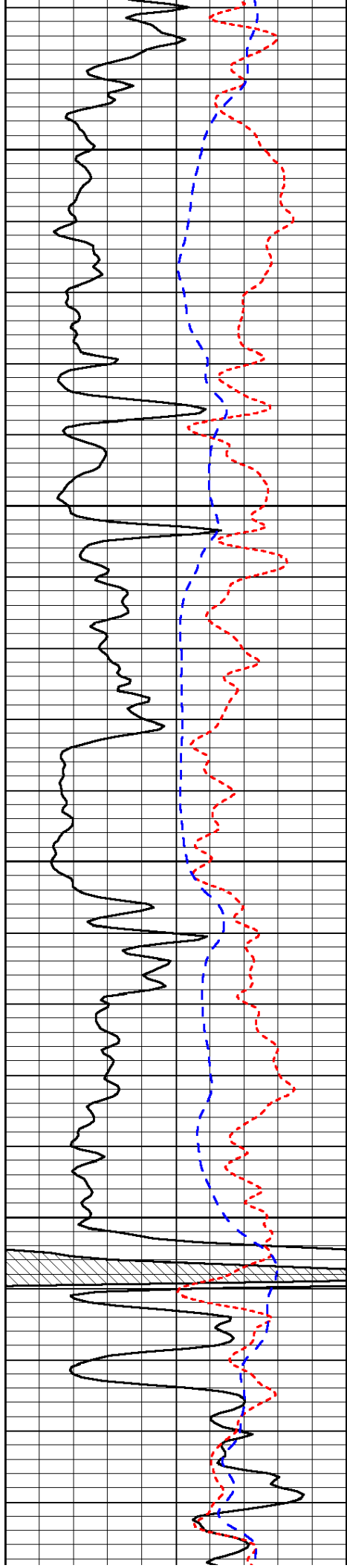


-37

-37

-37

-36

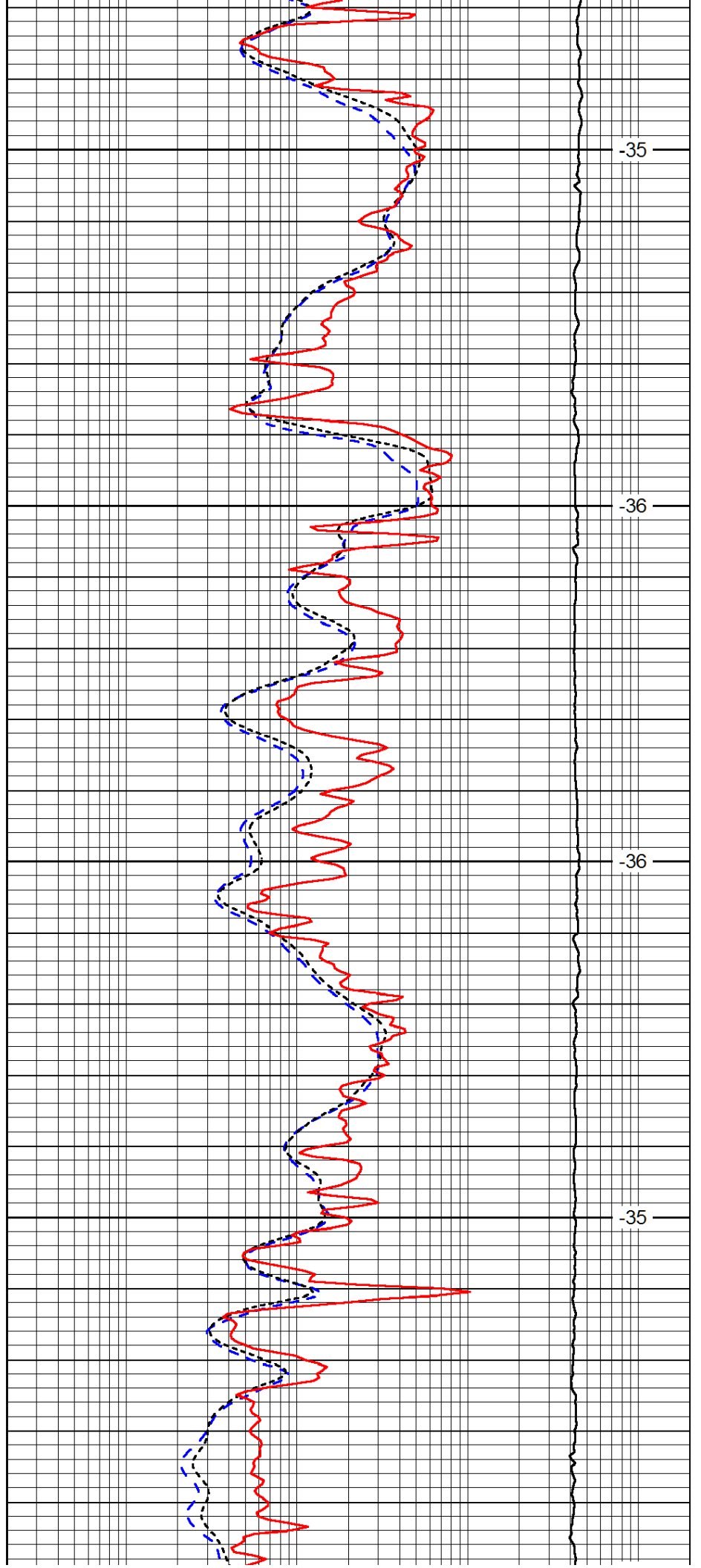


2850

2900

2950

3000

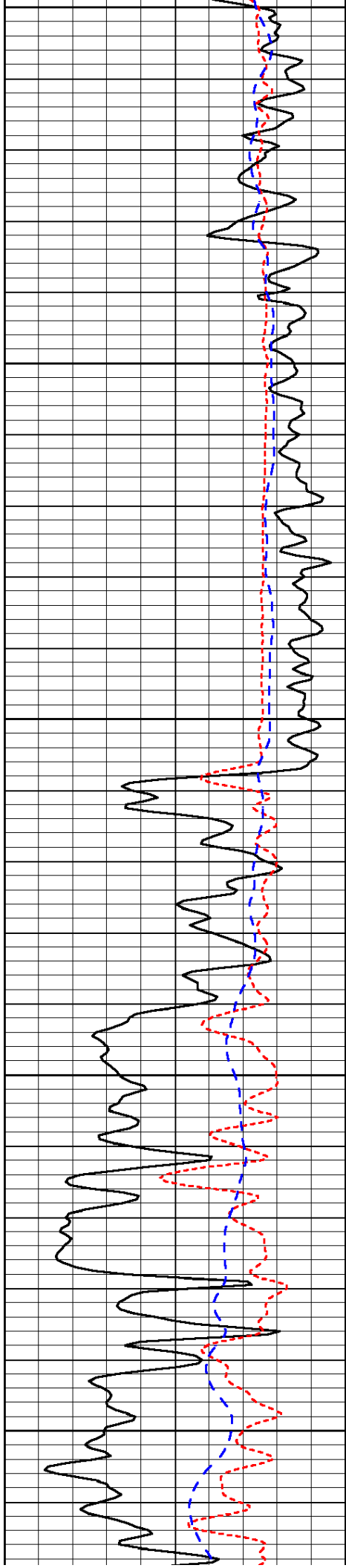


-35

-36

-36

-35



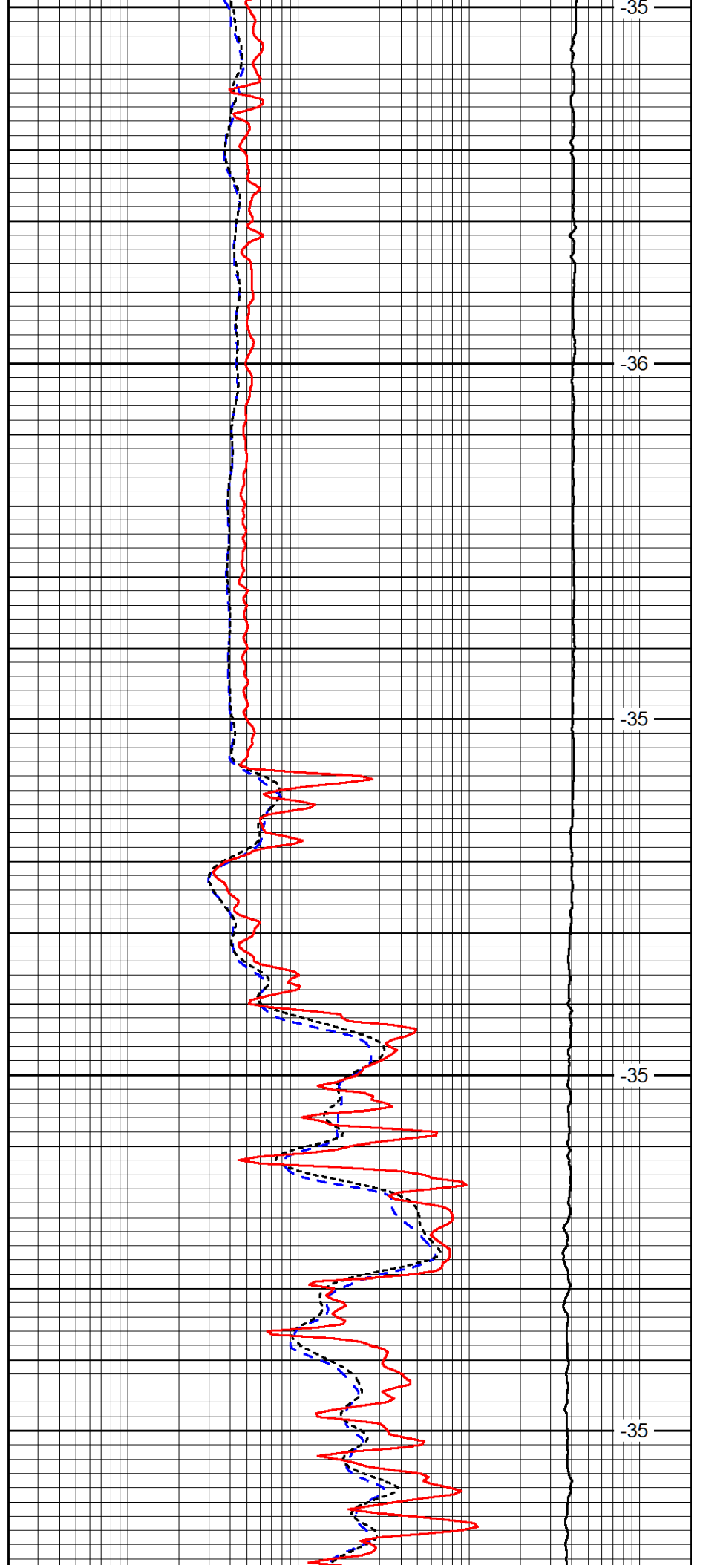
3050

3100

3150

3200

3250



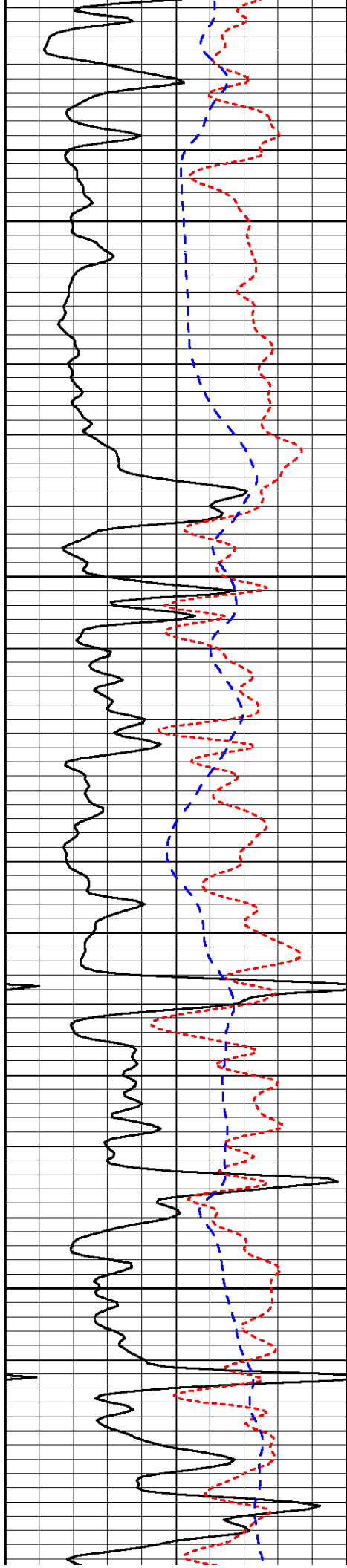
-35

-36

-35

-35

-35

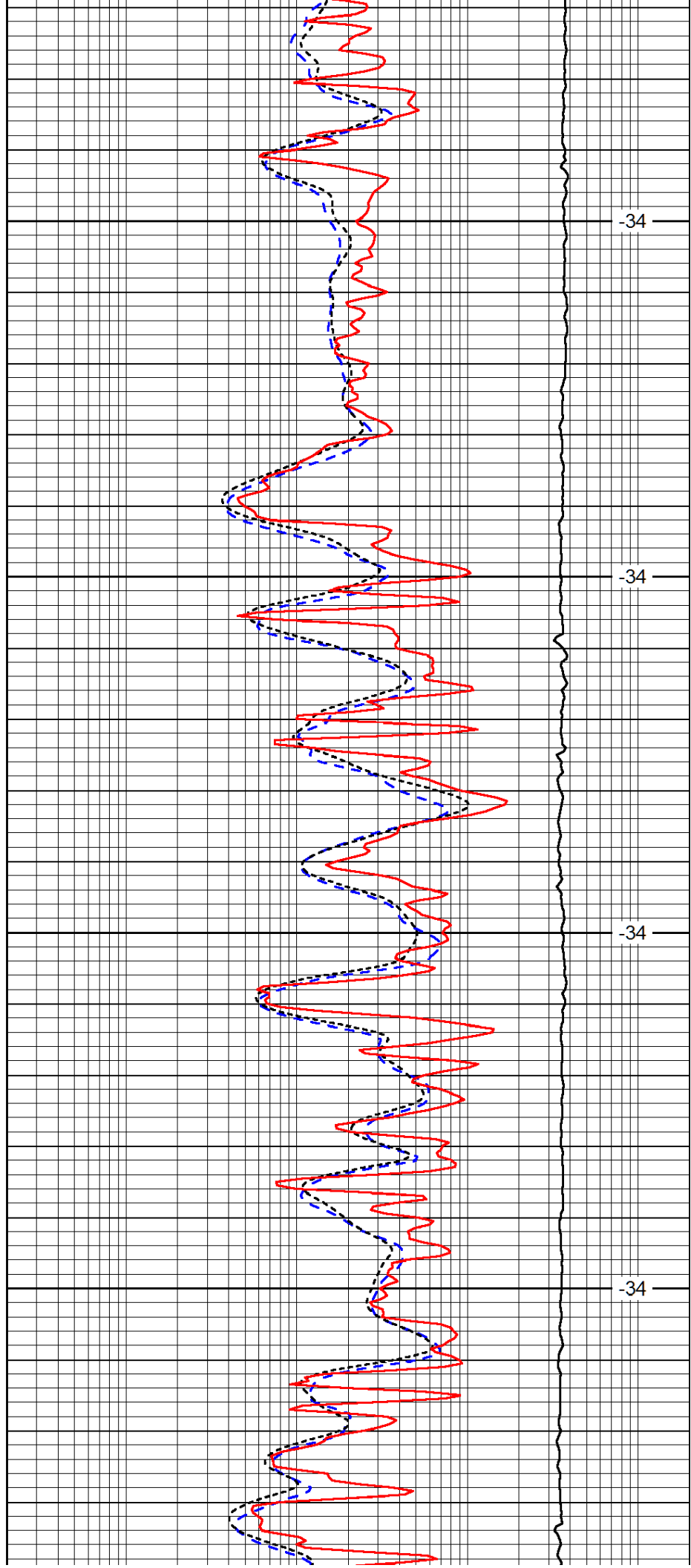


3300

3350

3400

3450

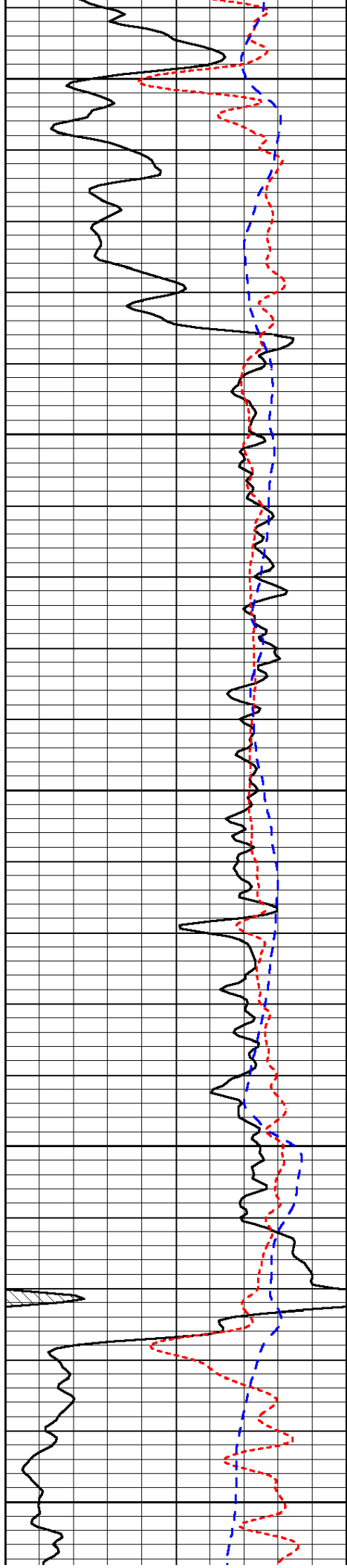


-34

-34

-34

-34



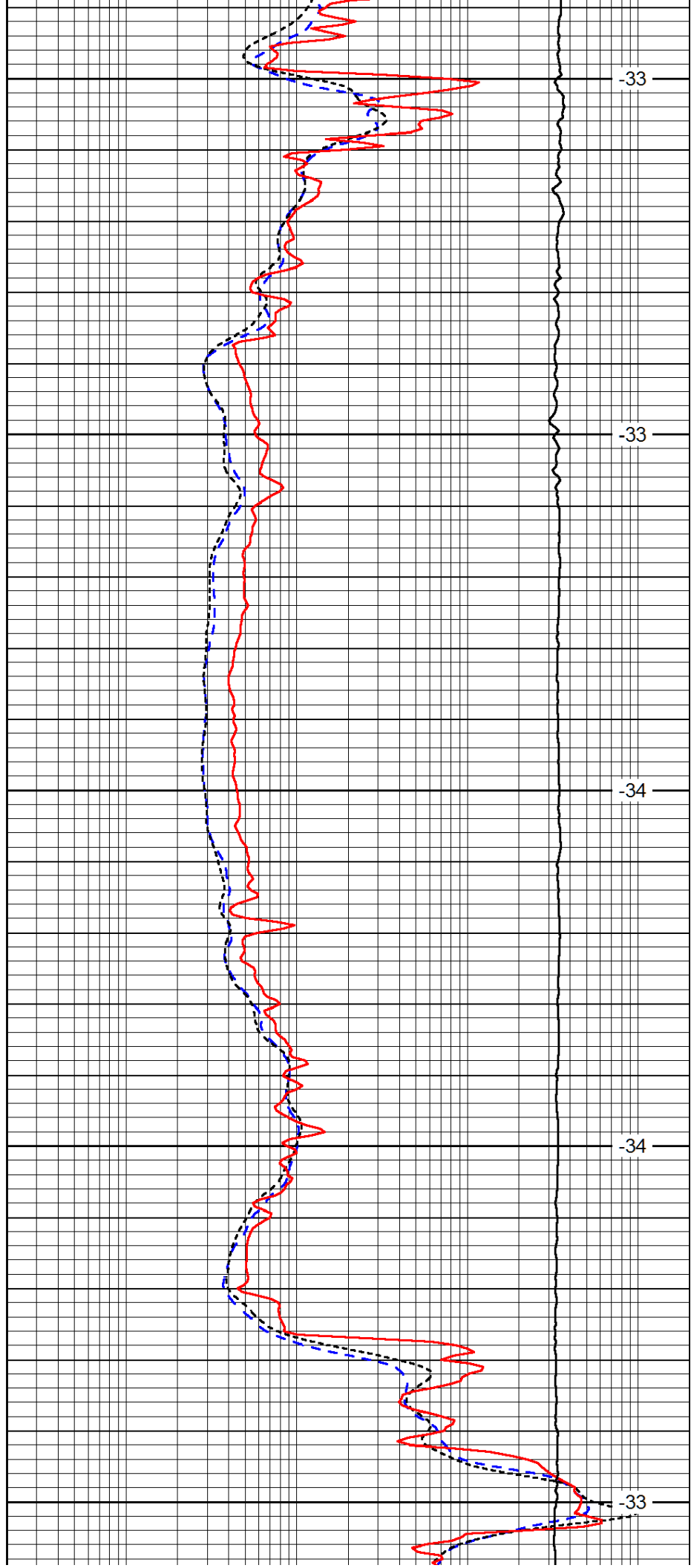
3500

3550

3600

3650

3700



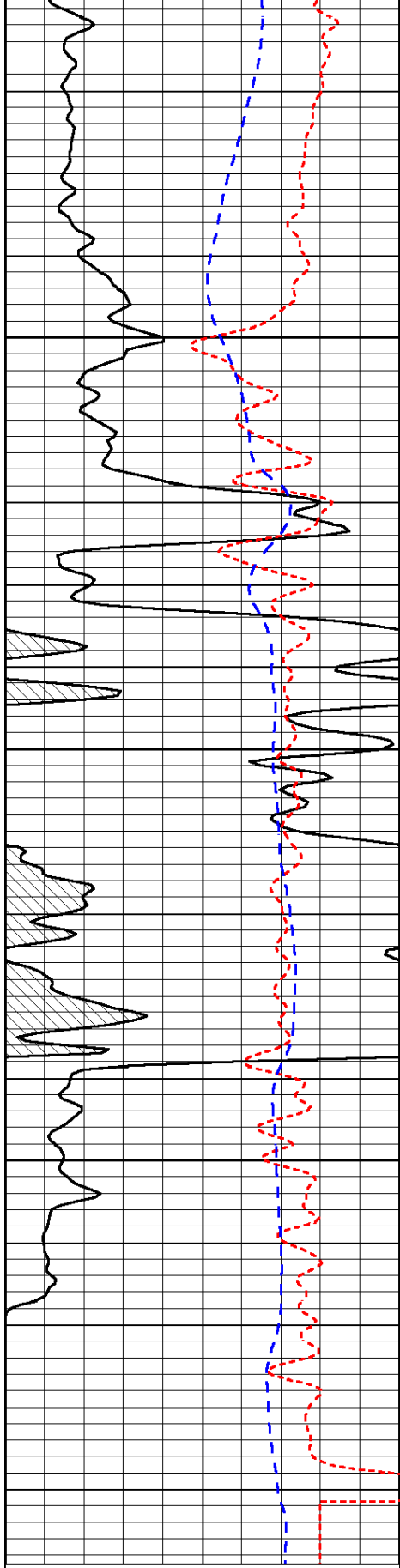
-33

-33

-34

-34

-33

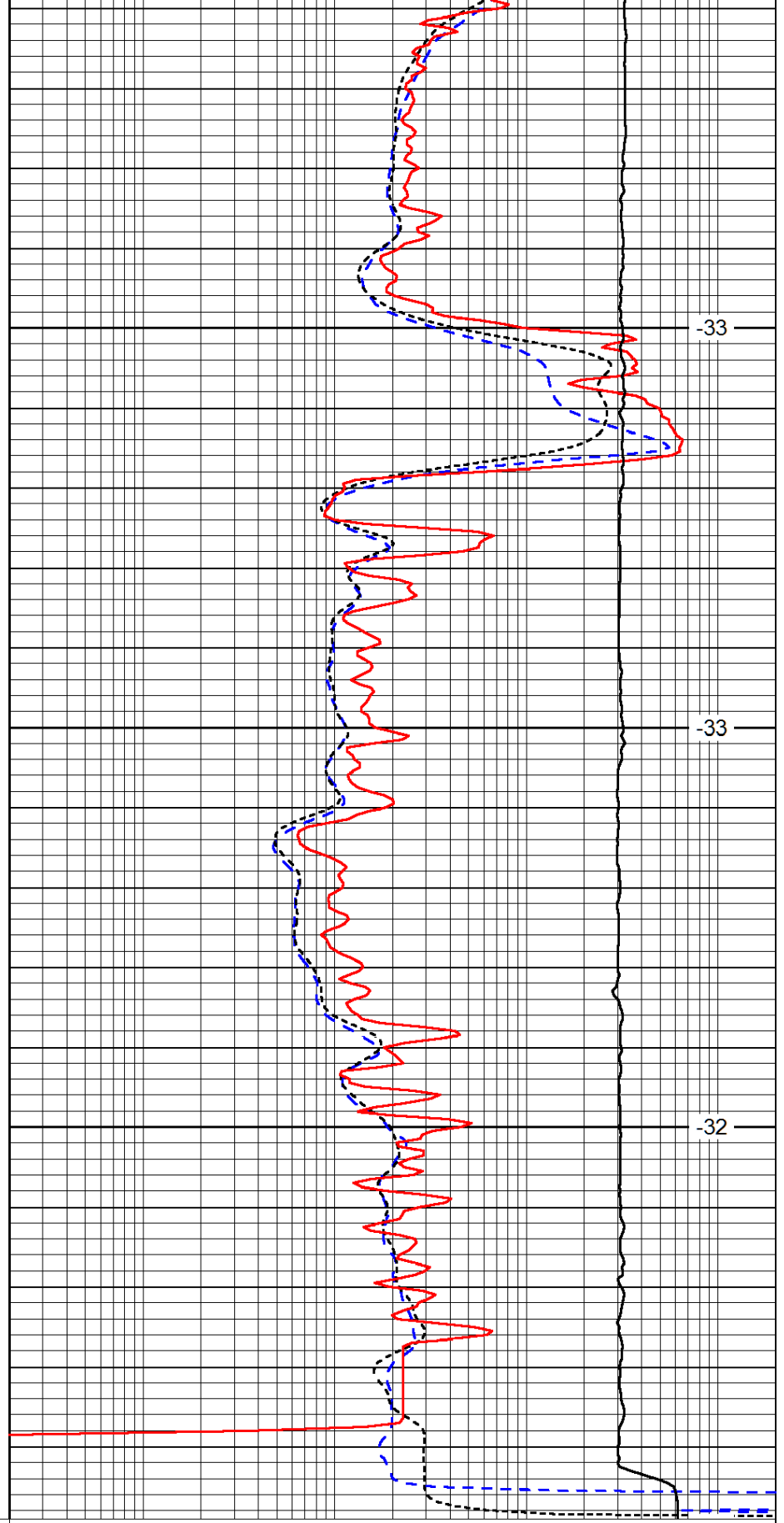


3750

3800

3850

0	Gamma Ray	150
-160	RXO/RT	40
-200	SP (mV)	0



-33

-33

-32

0.2	Deep Resistivity	2000
0.2	Medium Resistivity	2000
0.2	Shallow Resistivity	2000
10000	Line Tension	0

LSPD