



Pioneer Energy Services

# Microresistivity Log

26-057-21,794-00-00

**Company** Berexco, LLC  
**Well** Haines No. 1-31  
**Field** Wildcat  
**County** Dundy **State** Nebraska

**Location** 570' FNL & 570' FEL  
**Sec:** 31 **Twp:** 2N **Rge:** 37W  
**Other Services** RAG

**Permanent Datum** Ground Level Elevation 3134  
**Log Measured From** Kelly Bushing 13 Ft. Above Perm. Datum  
**Drilling Measured From** Kelly Bushing  
**Elevation** K.B. 3147  
 D.F. 3134  
 G.L. 3134

Date	8/16/2014
Run Number	Two
Depth Driller	4500
Depth Logger	4497
Bottom Logged Interval	4496
Top Log Interval	3680
Casing Driller	8.625 @ 310
Casing Logger	306
Bit Size	7.875
Type Fluid in Hole	Chemical
Salinity, ppm CL	800
Density / Viscosity	9.2 55
pH / Fluid Loss	11.5 6.0
Source of Sample	Flowline
Rm @ Meas. Temp	.54 @ 90
Rmf @ Meas. Temp	.41 @ 90
Rmc @ Meas. Temp	.73 @ 90
Source of Rmf / Rmc	Charts
Rm @ BHT	.40 @ 121
Operating Rig Time	3 1/2 Hours
Max Rec. Temp. F	121
Equipment Number	108
Location	Hays
Recorded By	J. Long
Witnessed By	Pete Vollmer

<<< Fold Here >>>

All interpretations are opinions based on inferences from electrical or other measurements and we cannot and do not guarantee the accuracy or correctness of any interpretation, and we shall not, except in the case of gross or willful negligence on our part, be liable or responsible for any loss, costs, damages, or expenses incurred or sustained by anyone resulting from any interpretation made by any of our officers, agents or employees. These interpretations are also subject to our general terms and conditions set out in our current Price Schedule.

### Comments

Thank you for using Log-Tech, Inc.  
(785) 625-3858

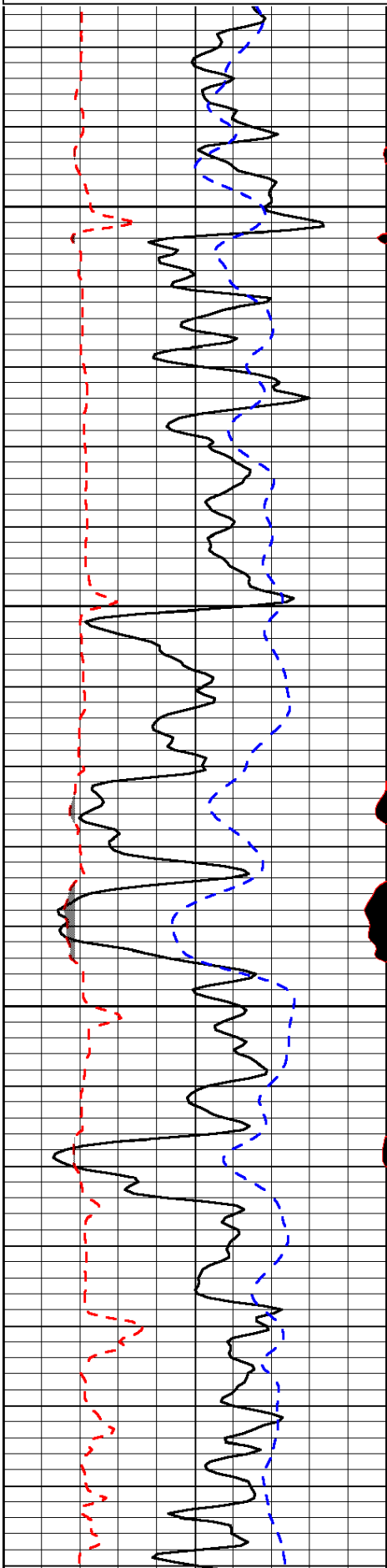
Benkelman, 3 North, 1/4 West, South Into

Database File: berexco\_haines\_1-31hd.db  
 Dataset Pathname: rag/berrag  
 Presentation Format: micro  
 Dataset Creation: Sat Aug 16 23:41:13 2014  
 Charted by: Depth in Feet scaled 1:240

0	Gamma Ray	150
6	MCAL (GAPI)	16
2.875	Mud Cake (GAPI)	7.875
-200	SP (mV)	0

0	Micro Inverse 1 X 1	40
0	Micro Normal 2"	40
10000	Line Weight	0

LSPD

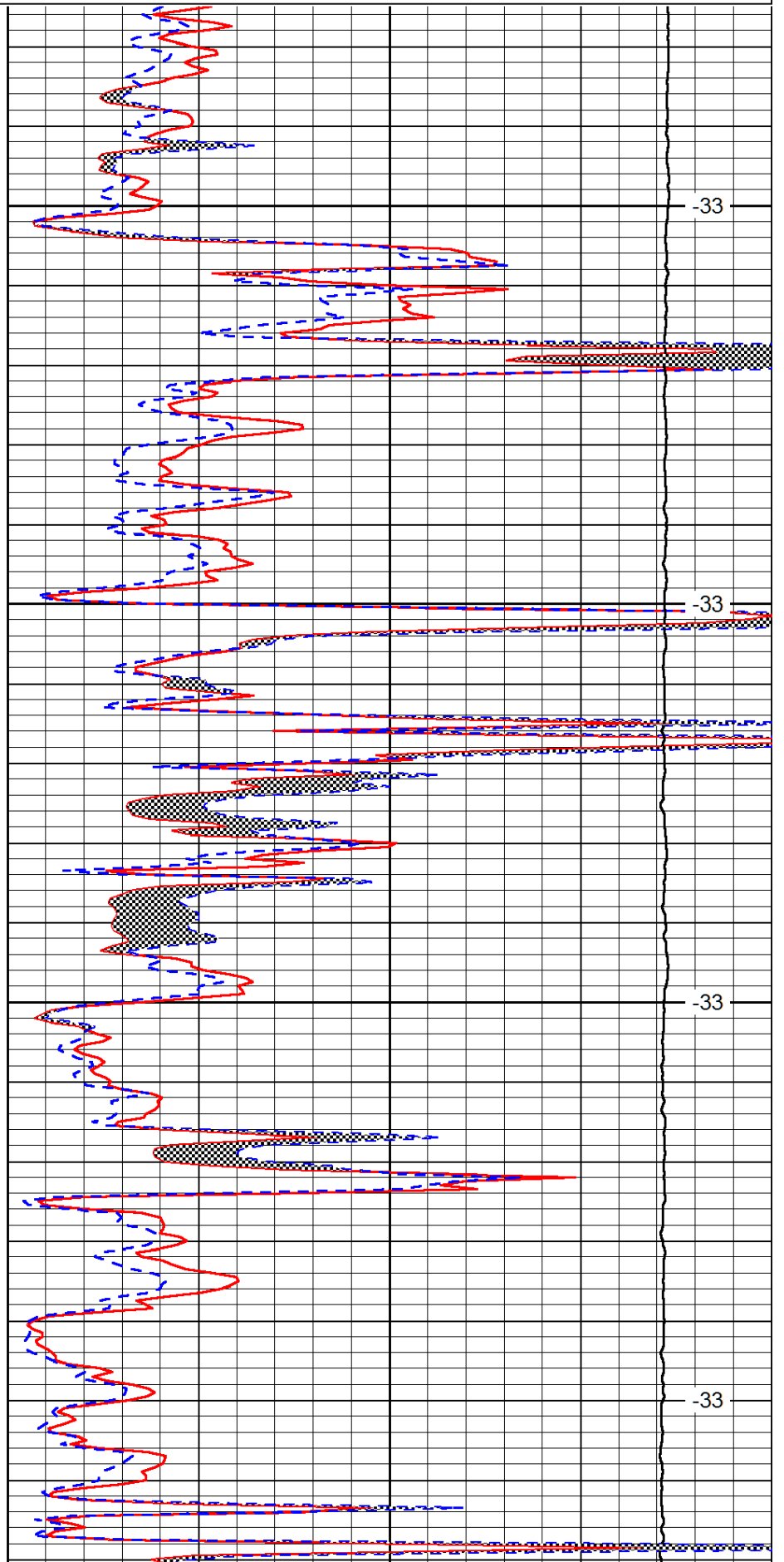


3700

3750

3800

3850

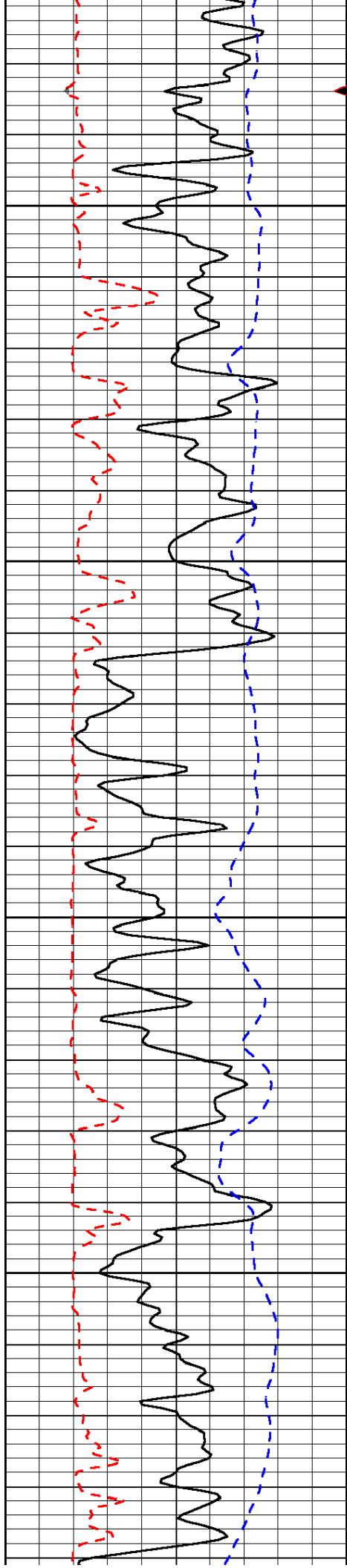


-33

-33

-33

-33

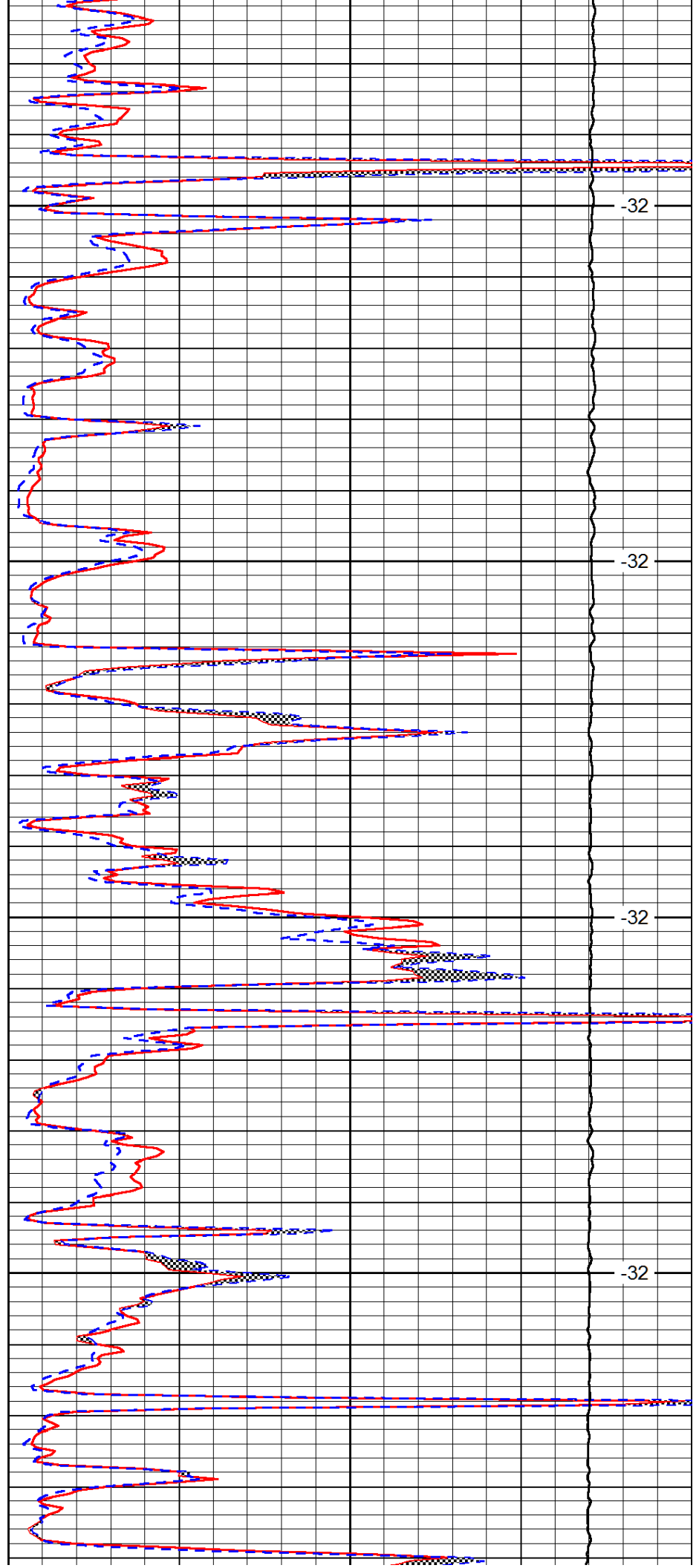


3900

3950

4000

4050

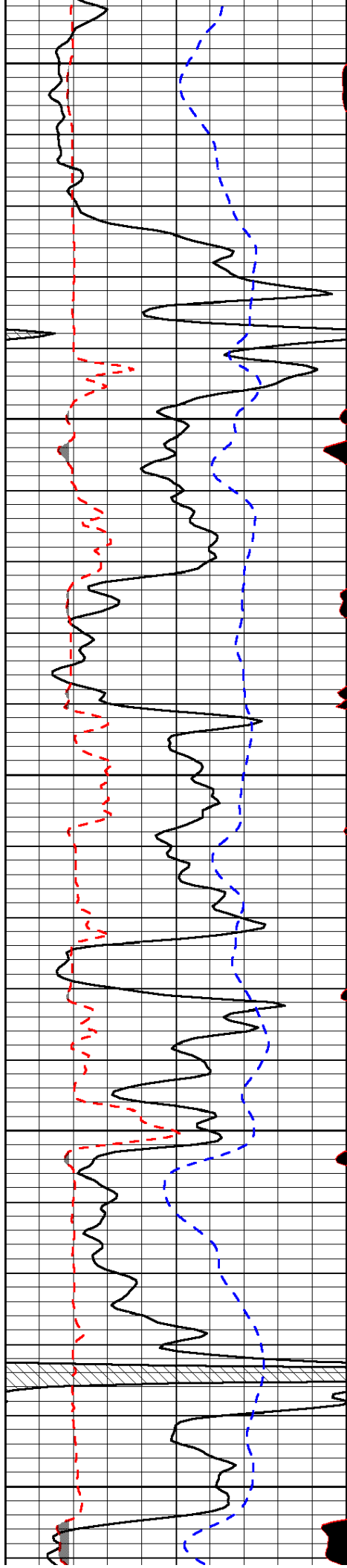


-32

-32

-32

-32



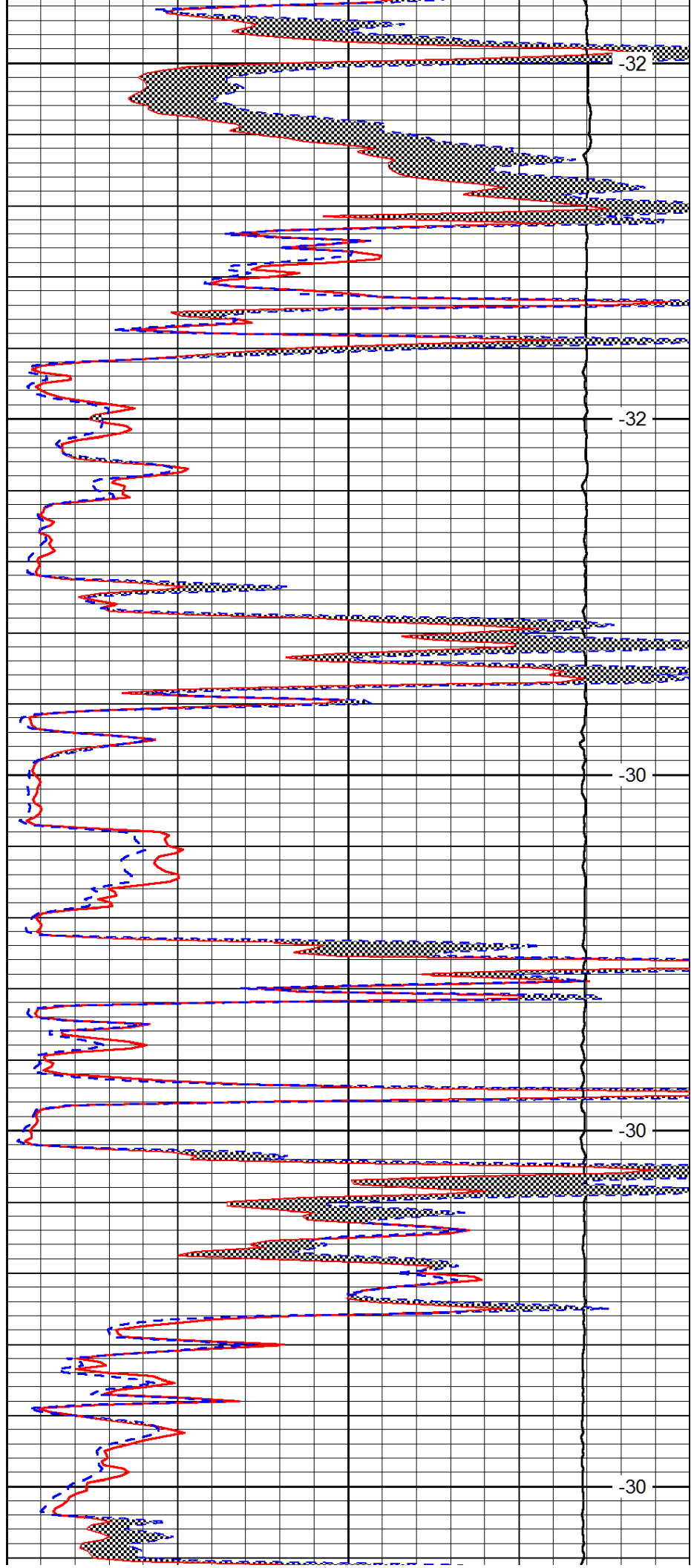
4100

4150

4200

4250

4300



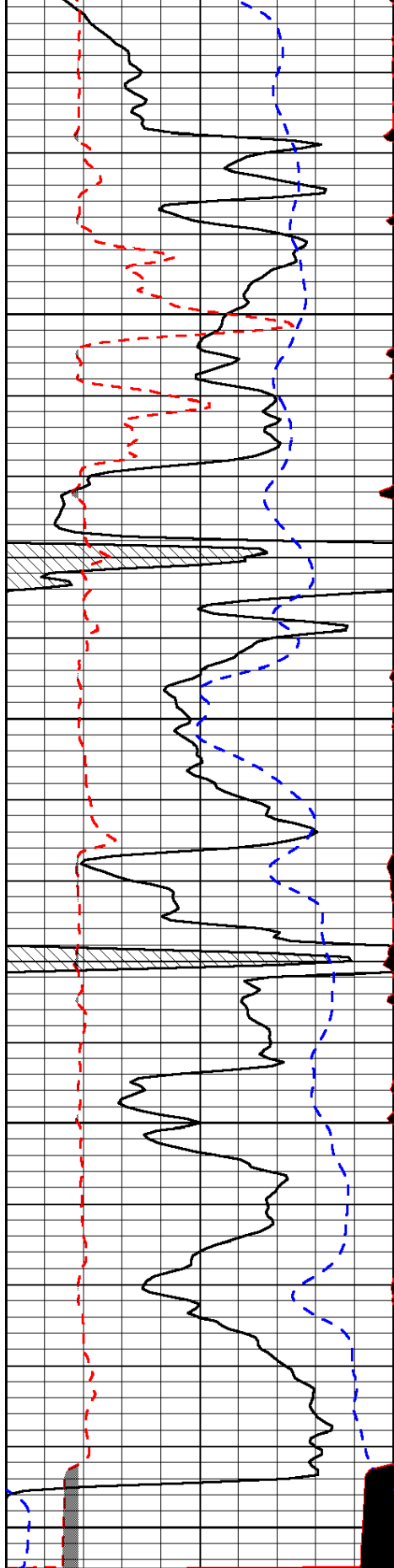
-32

-32

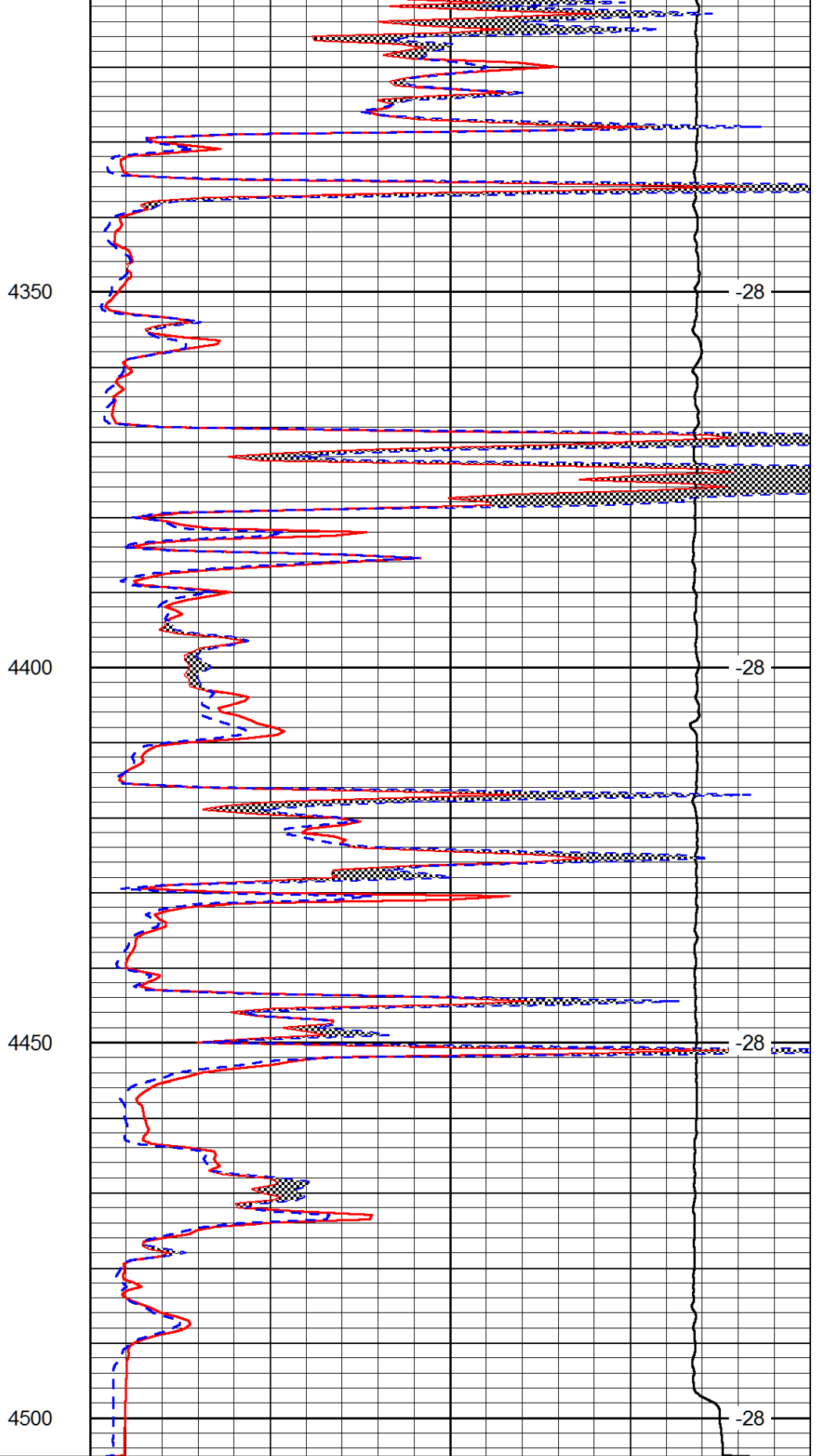
-30

-30

-30



0	Gamma Ray	150
6	MCAL (GAPI)	16
2.875	Mud Cake (GAPI)	7.875
-200	SP (mV)	0



0	Micro Inverse 1 X 1	40
0	Micro Normal 2''	40
10000	Line Weight	0

LSPD