



Pioneer Energy Services

Dual Compensated Porosity Log

Company Carrie Exploration and Development
Well Audrey No. C-1
Field Zenith Peace Creek North
County Reno **State** Kansas

Location E2-SE-SW-NW
 2310' FNL & 1064' FWL

Sec: 30 **Twp:** 22S **Rge:** 9W

Permanent Datum Ground Level **Elevation** 1739

Log Measured From Kelly Bushing **9 Ft. Above Perm. Datum**

Drilling Measured From Kelly Bushing

Date 8/16/14

Run Number One

Type Log CNL / CDL

Depth Driller 3900

Depth Logger 3893

Bottom Logged Interval 3872

Top Logged Interval 2600

Type Fluid In Hole Chemical

Salinity, PPM CL N/A

Density N/A

Level Full

Max. Rec. Temp. F 119

Operating Rig Time 4 Hours

Equipment -- Location 10 Hays

Recorded By J. Henrickson

Witnessed By Steve Reed

Other Services DIL/MEL

Borehole Record		Casing Record					
Run No	Bit	From	To	Size	Wgt.	From	To
One	12.25	00	260	8.625	23#	00	260
Two	7.875	260					

<<< Fold Here >>>

All interpretations are opinions based on inferences from electrical or other measurements and we cannot and do not guarantee the accuracy or correctness of any interpretation, and we shall not, except in the case of gross or willful negligence on our part, be liable or responsible for any loss, costs, damages, or expenses incurred or sustained by anyone resulting from any interpretation made by any of our officers, agents or employees. These interpretations are also subject to our general terms and conditions set out in our current Price Schedule.

Comments

Thank you for using Log-Tech, Inc.
 (785) 625-3858

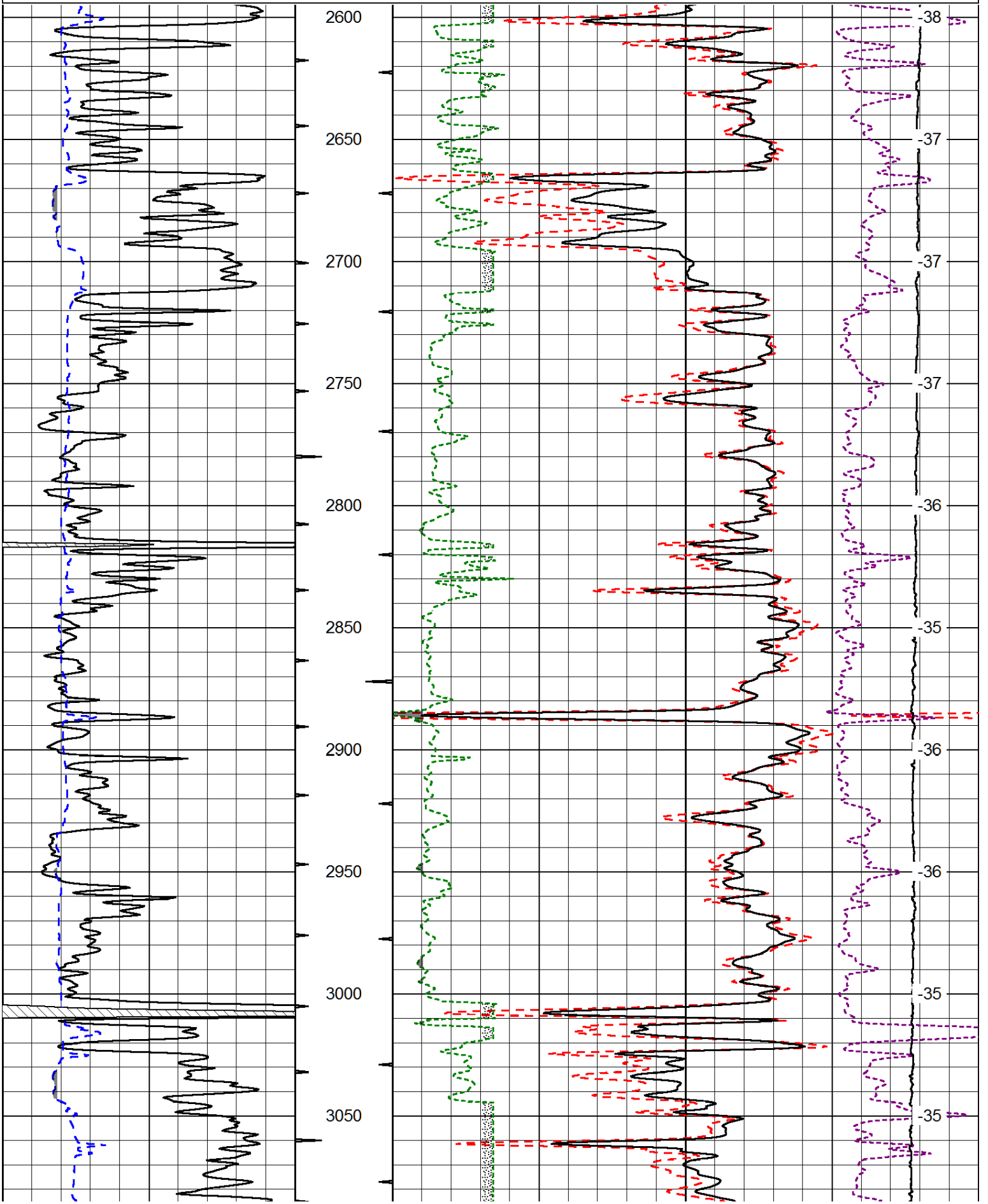
Great Bend Kansas
 South to HWY 19, 23 East to Langdon Rd, 4 South, 2 West, 1/2 North, East Into

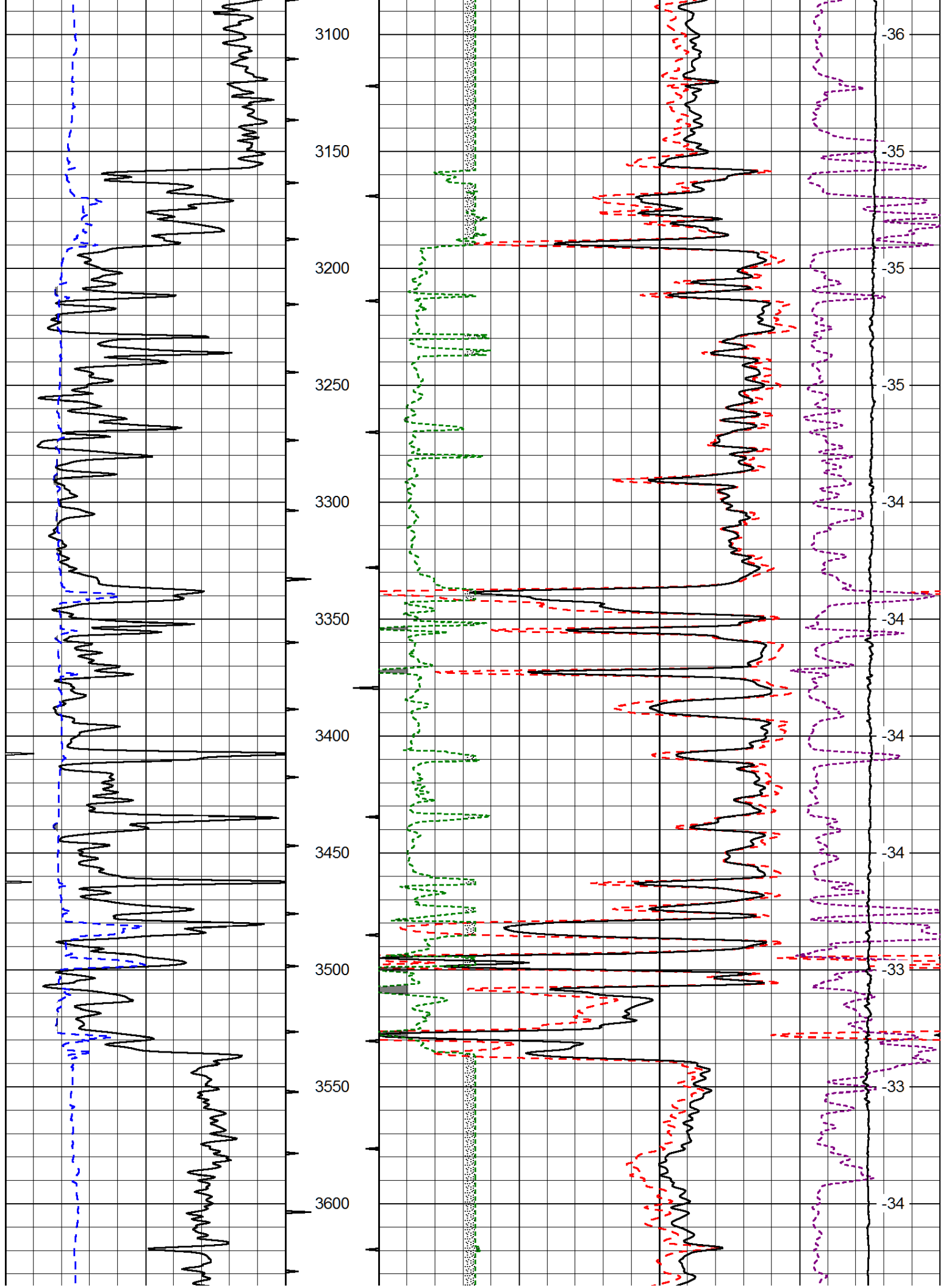
Database File: carrie_audrey_c_1hd.db
 Dataset Pathname: DIL/carstk
 Presentation Format: cdl
 Dataset Creation: Sat Aug 16 23:22:05 2014
 Charted by: Depth in Feet scaled 1:600

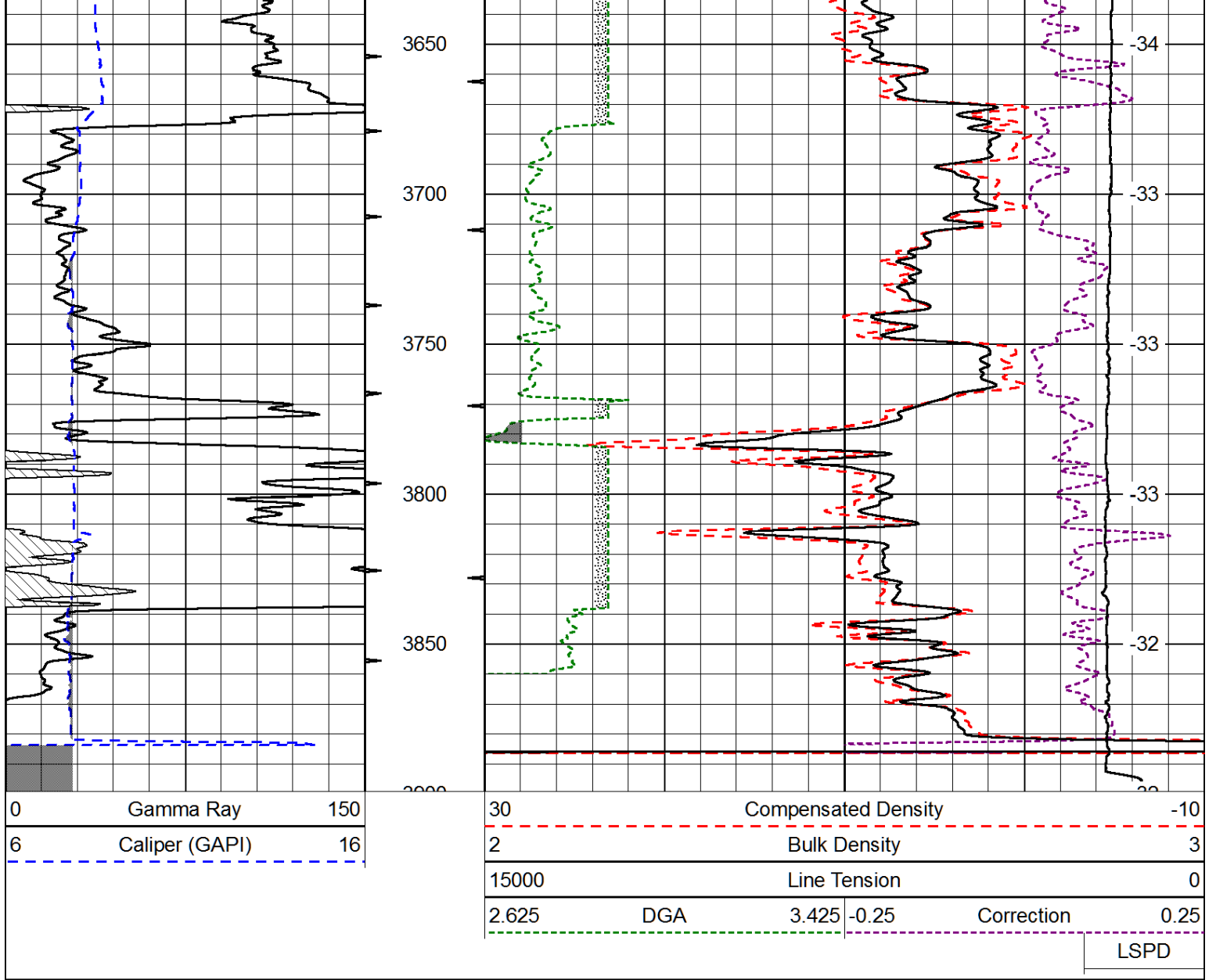
0	Gamma Ray	150
6	Caliper (GAPI)	16

30	Compensated Density		-10
2	Bulk Density		3
15000	Line Tension		0
2.625	DGA	3.425	-0.25
			Correction
			0.25

LSPD







Database File: carrie_audrey_c_1hd.db
 Dataset Pathname: DIL/carstk
 Presentation Format: cndlspec
 Dataset Creation: Sat Aug 16 23:22:05 2014
 Charted by: Depth in Feet scaled 1:240

